

Santa Fe Village Park

The short loop circles the children's playground. The southern segment is a bit steep.

SHORT LOOP

- Trail Distance:** .3 mile
- Difficulty:** Grade 1
- Steps:** 635
- Trail Surface:** 4-6 foot wide concrete

LONG LOOP

- Trail Distance:** .7 mile
- Difficulty:** Grade 1-2
- Steps:** 1480
- Trail Surface:** 4-6 foot wide concrete

Attractions: dog park, playground, sports fields

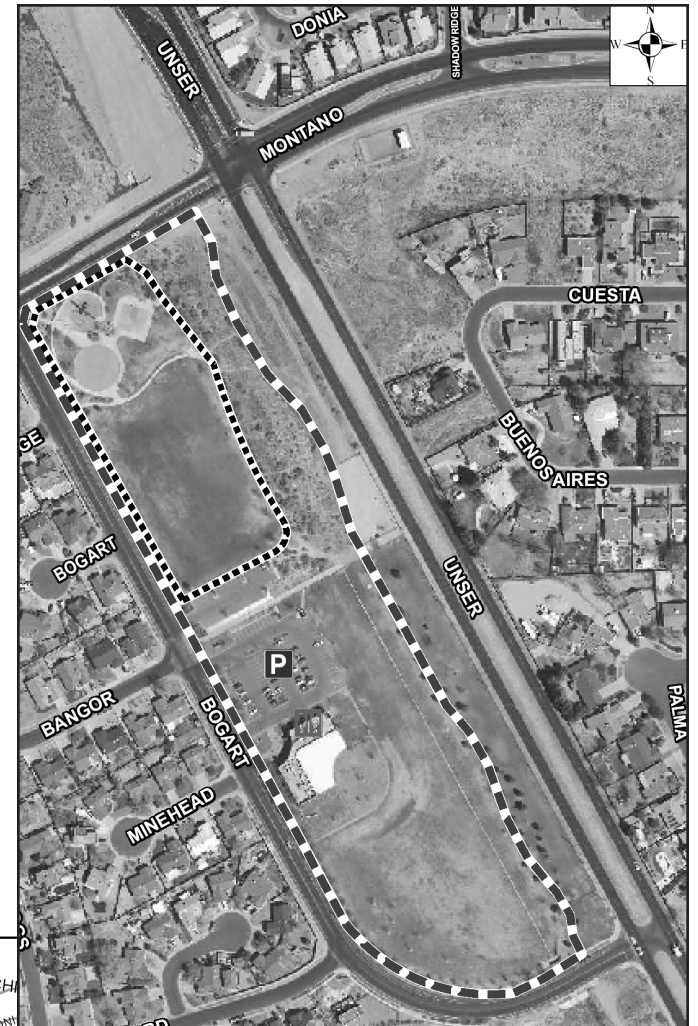


NEARBY MAJOR CROSS STREETS:
Unser & Montano NW

ABQ RIDE:
#94, #162

PUBLIC FACILITIES:
Taylor Ranch Library

PARKING:
north of the library



Other suggested routes in 87120
North I-40 Trail (Laurelwood Neighborhood)



Santa Fe Village Park

ZIP CODE 87120