

Roosevelt Park

The northern segment of the path is flat. The southern half is steeper, not fully accessible and consists of a packed gravel surface. The park is newly renovated. Dogs are permitted off-leash in this park. There is a lot of activity.

Trail Distance: .65 mile

Difficulty: Grade 2

Steps: 1375

Trail Surface: 4-6 foot wide concrete and packed gravel

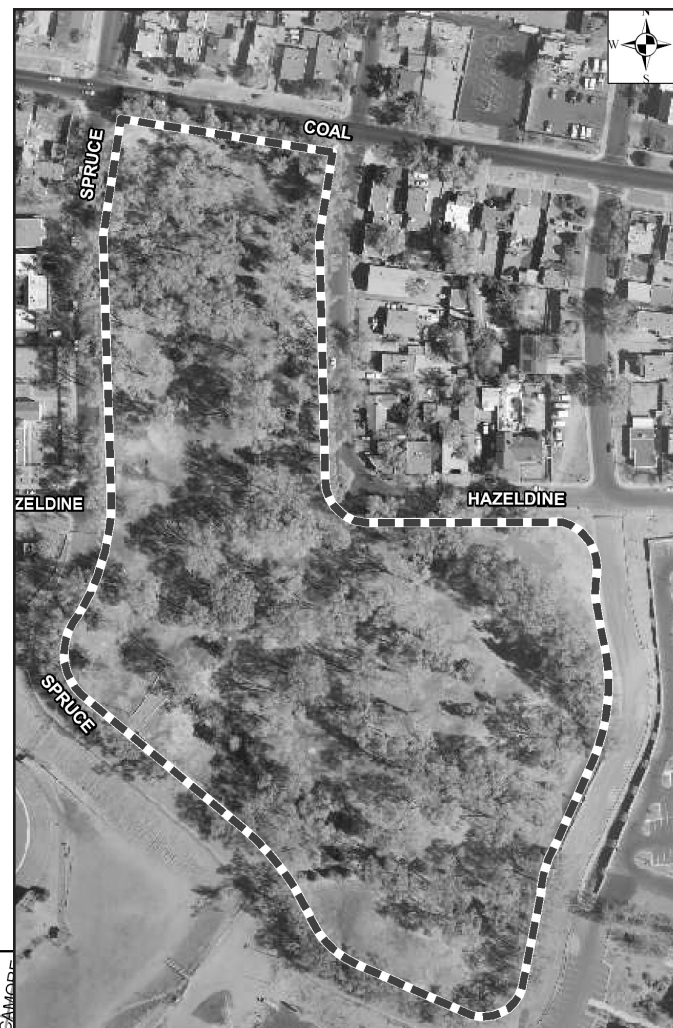
Attractions: mature trees, frisbee, golf course

**NEARBY
MAJOR
CROSS
STREETS:**
Coal &
University SE

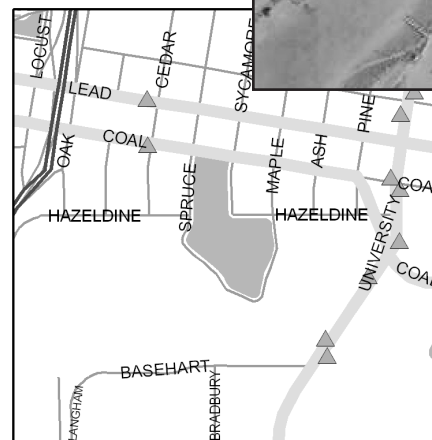
ABQ RIDE:
#97

**PUBLIC
FACILITIES:**
none

PARKING:
parking lot near
Hazeldine and
Sycamore SE



▲ Bus Stops
— Commuter/Peak Hour
— Local/All-Day



**Other suggested routes
in 87106:**
Hyder Park



Roosevelt Park

**ZIP CODE
87106**