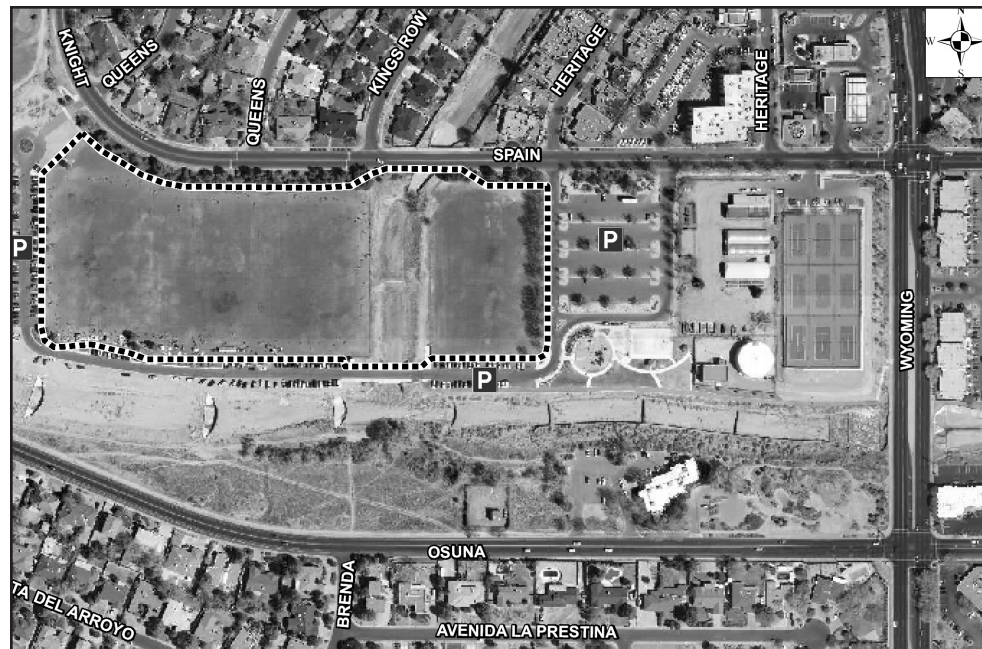


Arroyo del Oso Park

The path goes around the soccer fields. The playground is at the southwest corner of the park. Weekend parking is limited during fall and spring soccer events.

Trail Distance: .6 mile
Difficulty: Grade 1
Steps: 1270
Trail Surface: 4-6 foot concrete

Attractions: playground, ball courts, sports fields, portable restrooms



NEARBY MAJOR CROSS STREETS:

Wyoming & Spain NE

ABQ RIDE:

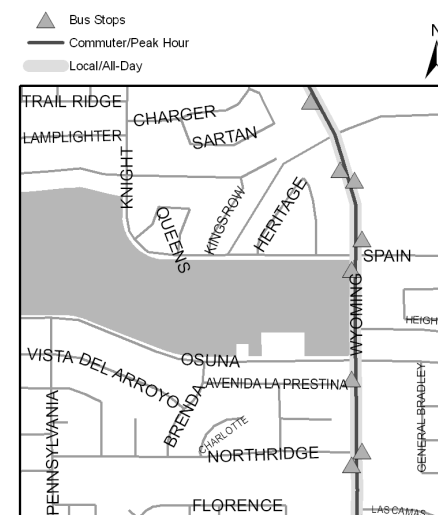
#31

PUBLIC FACILITIES:

none

PARKING:

on site



Arroyo del Oso Park

ZIP CODE
87109