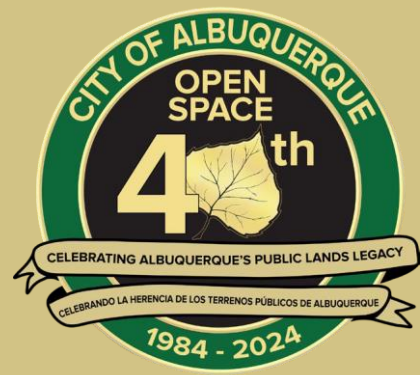


# Paseo de La Mesa Trailhead Trail Surfacing Improvements



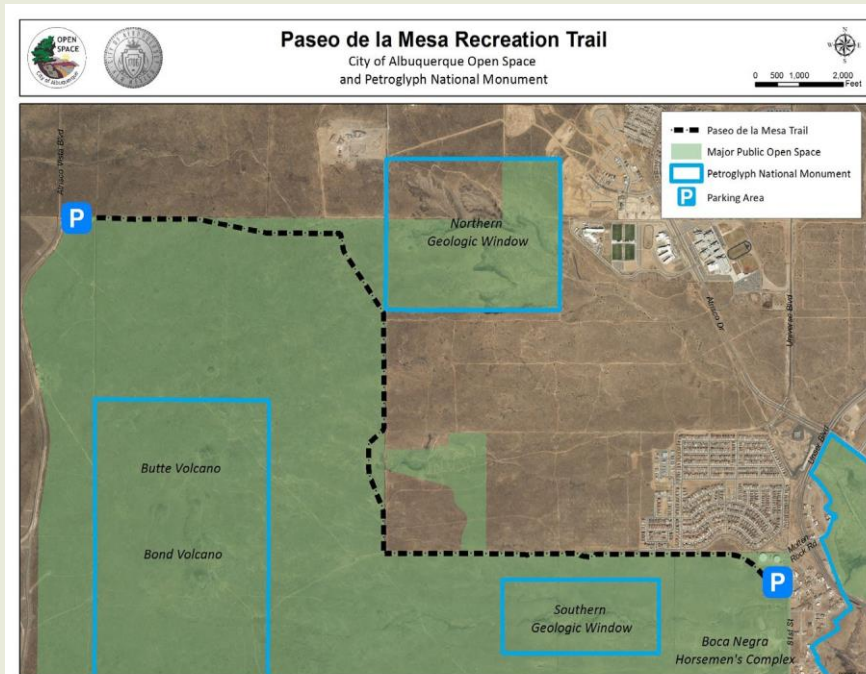
The City of Albuquerque Parks & Recreation Open Spaces Division would like public feedback regarding the Paseo de la Mesa paved multi-use trail located in NW Albuquerque, NM.

Existing conditions in the NW Mesa of shifting soils and exposure to the elements have led to erosion causing the existing asphalt surfacing to develop large cracks. Repair efforts have been made in the past, but have now become too prevalent to maintain with the current surfacing. The City Parks and Recreation Department is reviewing potential options for future of the trail. Please share your thoughts in the survey by scanning the QR code below. You can help by sharing with other trail users!

This survey will be available until June 3rd, 2024.



Scan the QR Code below to complete a short survey!



For more information:  
505-932-8653  
[avialpando@cabq.gov](mailto:avialpando@cabq.gov)