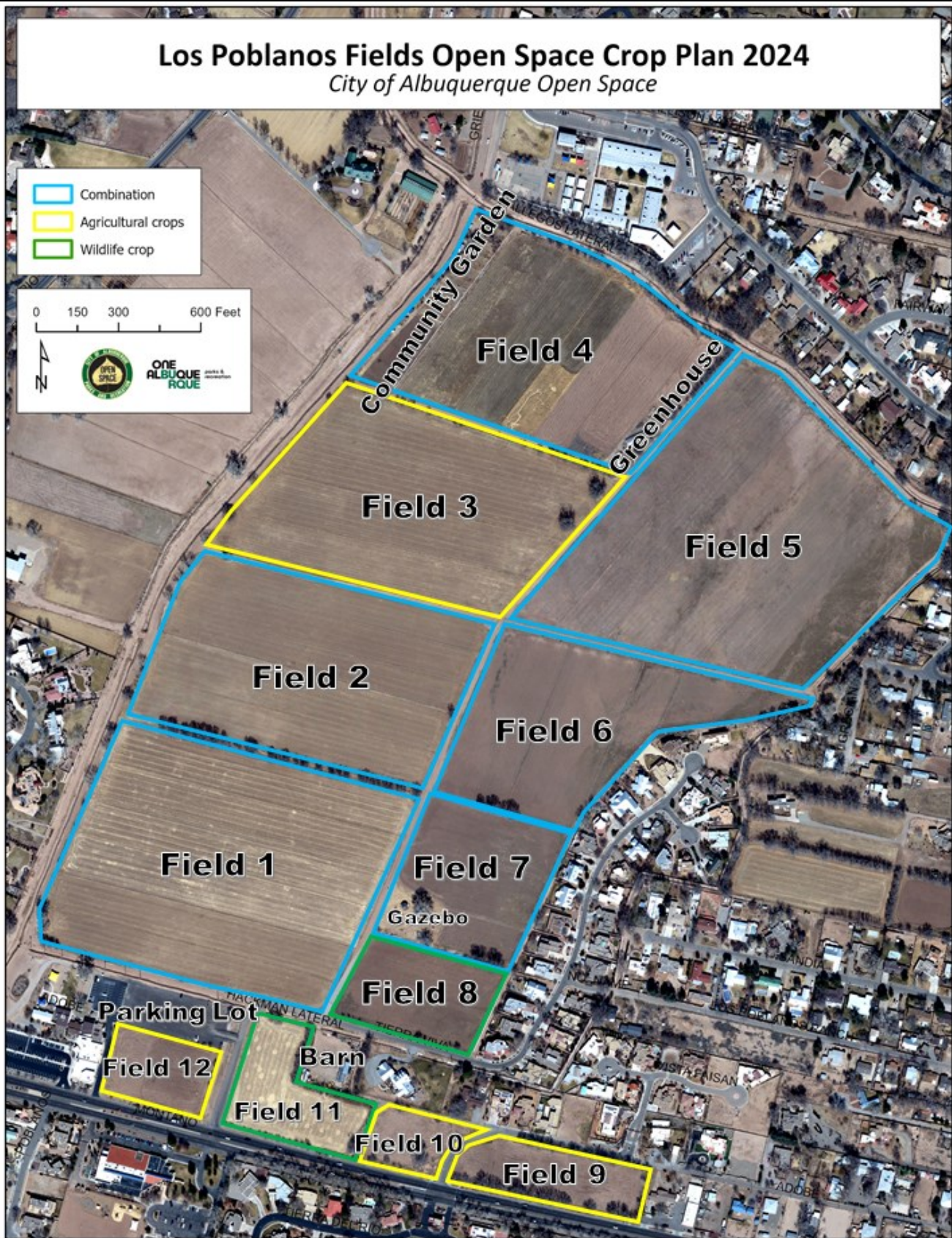




Los Poblanos Fields Open Space

2024 Crop Plan



Notes:

- Fields in green are planted in wildlife crops only. Fields in yellow are agricultural crops only. Fields in blue are a combination of both wildlife and agricultural crops. This plan is subject to change based on water availability and other unpredictable factors. The Middle Rio Grande Conservancy District (MRGCD) Board of Directors anticipates that the irrigation season will end early this season due to the continuing drought and the inability to store water at El Vado Dam. For more information about water distribution and the 2024 irrigation season please visit MRGCD’s website at mrgcd.com
- At Los Poblanos Fields a minimum of 25% of each farmer’s total acreage must be dedicated to wildlife crops. In return, they may plant the remaining acreage with other crops approved by the Open Space Division. This enables the farmers to provide food for wildlife and still break even at minimal cost to the City.
- Open Space Division requires the farmers to periodically cut sections of the wildlife crops to provide migrating wildlife, like sandhill cranes, with food throughout the winter. Sorghum cuttings remain on the ground, which allows wildlife to feed on the seeds while providing an open area to watch for predators. Open Space farmers utilizing this method typically cut a fraction of their wildlife crops once or twice a month throughout fall and winter to provide seed for forage until January or early February. Other wildlife crops such as sunflowers are left standing for small birds and pollinators.

RASBAND DAIRY

Field 1: 24 acres total, 16 acres alfalfa, 8 acres sorghum/ sudan

Field 2: 16 acres total, 8 acres alfalfa, 8 acres sorghum/ sudan

Field 3: 17 acres total, alfalfa

SOUTHWEST SOIL HEALTH

Field 5: 25 acres total, 19 acres alfalfa and tall fescue, 6 acres of buckwheat and yellow pea

RIO GRANDE COMMUNITY FARM

Field 4: 16 acres total (including greenhouse), 2 acres community garden (mixed veggies), 10.25 acres micro-farmer program, 5.5 acres alfalfa, 1/8 acre sorghum

Field 6: 11 acres total, 4 acres alfalfa, 4 acres sorghum, 3 acres wildlife crop

Field 7: 6 acres total (including gazebo), 2.5 acres alfalfa, 2.5 acres sorghum

Field 8: 5 acres total, sorghum

Field 9: 4 acres total, teff grass

Field 10: 1.5 acres total, teff grass

Field 11: 4 acres total, oats and then sunflowers

Field 12: 3.5 acres total, sorghum then alfalfa

TOTAL FARMABLE ACREAGE= 128.46

TOTAL WILDLIFE CROP ACREAGE= 52.5 ACRES (41%)

Please report questions or concerns about the open space to 311. For more information about the farms please contact the local agriculture community coordinator at solivas@cabq.gov