



TIJERAS BIOZONE EDUCATION CENTER

**PROPOSED SITE PLAN
12.10.24**

**City of Albuquerque
Open Space Advisory Board**

A vertical architectural sketch on the left side of the slide, rendered in a light olive green color. It depicts a building with a flat roof and several windows, situated next to a body of water. There are trees, a curved path, and a small bridge or walkway in the foreground. The sketch is done in a loose, hand-drawn style.

AGENDA

1. Goals & Objectives
2. Program
3. Partners & Stakeholders
4. Stakeholder & Public Input
5. Current Work
6. The Building: Evolution & Design Approach
7. Plan Concept Elements

Sandia Mountains



Interstate 40

Rte. 66
Open Space

US Rte 66

TBZEC SITE

Polk's Strong
Horse Stables

US Rte 66

Interstate 40

Tijeras Creek

Tijeras Creek



GOALS & OBJECTIVES

1. Nature Accessibility for All
2. Threshold Nature Experience
3. A Setting & Tool for Education
4. Protect & Enhance the Natural Environment
5. Promote Community & Youth Science
6. Tijeras Cultural Corridor Plan Destination



PROGRAM

1. Large Events
2. Small Group Educational Events
3. Family-sized Seating & Shelters
4. Trailhead
5. Restroom
6. ADA Sensory Trail
7. Passive Recreation
8. Adventure Trail
9. Caretake Accommodations
10. Camping (organized, limited)



PARTNERS & STAKEHOLDERS

1. Ciudad Soil & Water Conservation District
2. Hero's Path Palliative Care
3. Nature Matters Academy
4. Talking Talons
5. USFS Sandia Ranger District
6. Bernalillo County
7. East Mountain Regional Trail Council
8. Carnuel Land Grant



STAKEHOLDER & PUBLIC INPUT



STAKEHOLDER KICKOFF
MAY 2023

STAKEHOLDER MEETING
JULY 2023

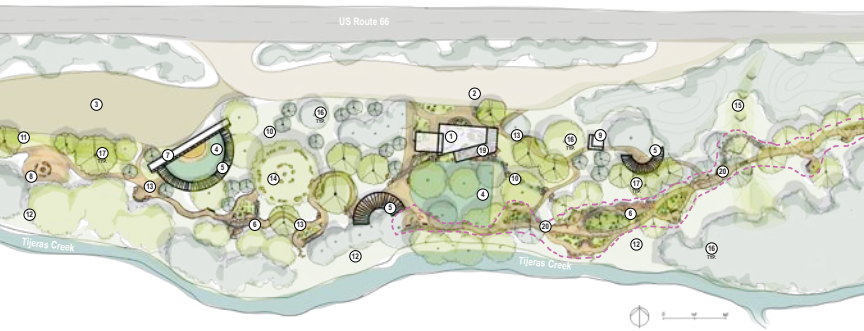
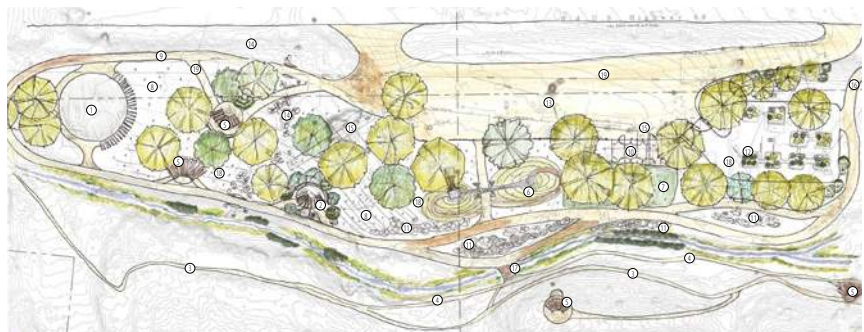
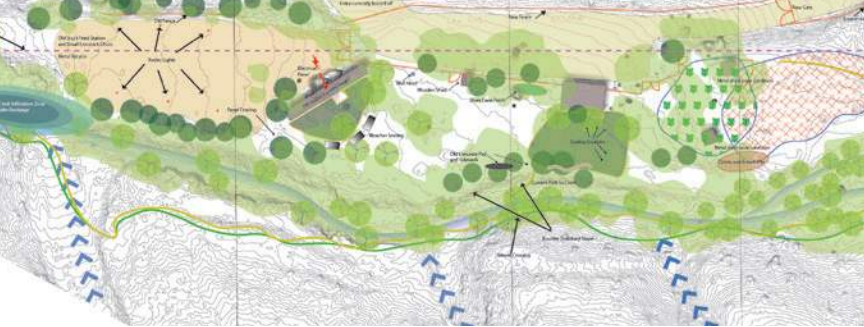
OSAB PRESENTATION
SEPTEMBER 2023

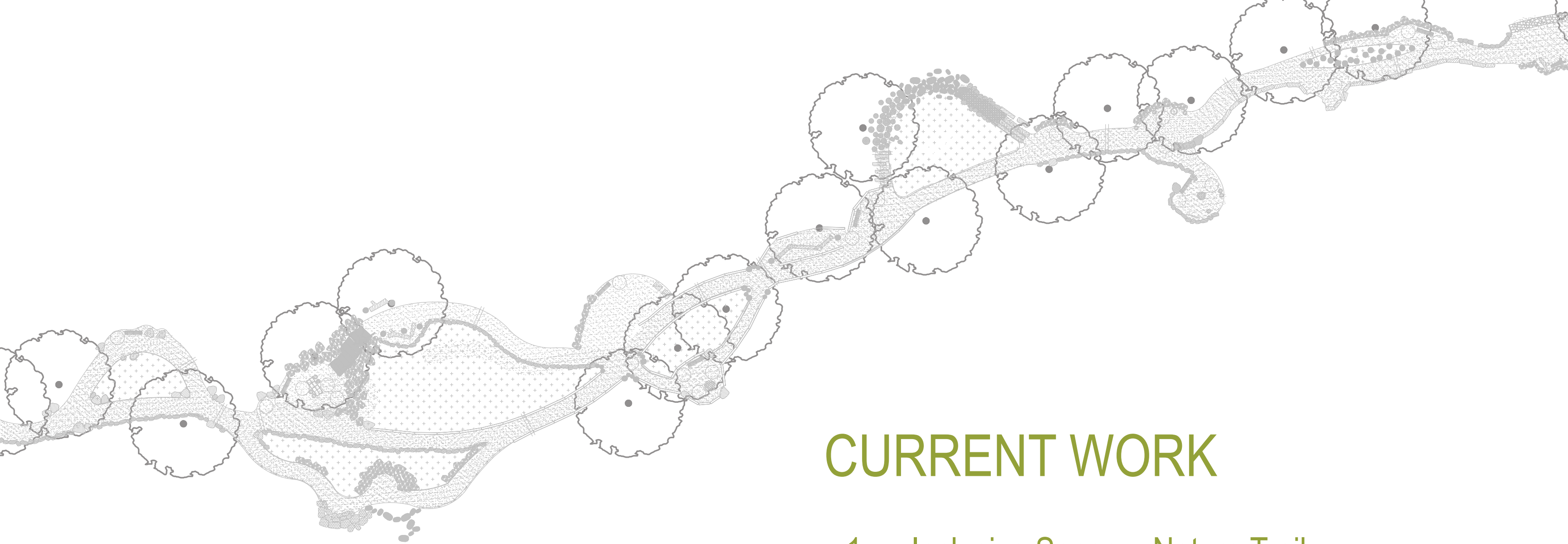
PUBLIC MEETING
OCTOBER 2023

STREAM RESTORATION SITE WALK WITH STAKEHOLDERS
DECEMBER 2023

PUBLIC MEETING
SEPTEMBER 2024

STAKEHOLDER MEETING
NOVEMBER 2024





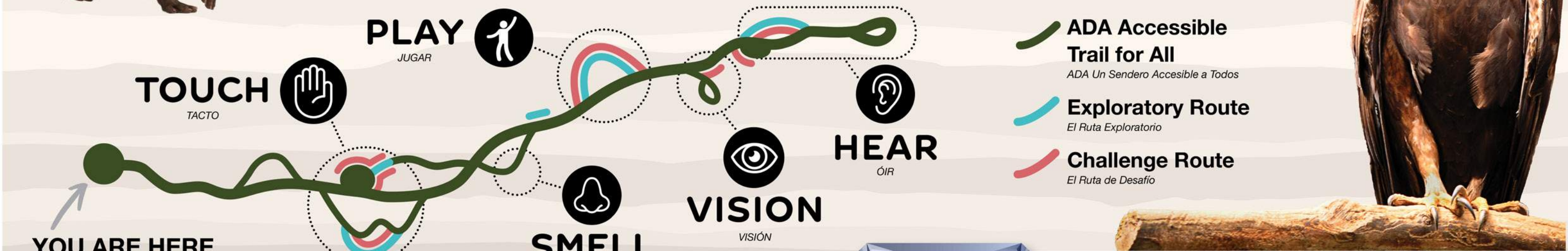
CURRENT WORK

1. Inclusive Sensory Nature Trail
2. Trail Building
3. Site Clean Up
4. Community Events

SENSORY TRAIL FRAMEWORK

GEM Un Sendero Sensorial Inclusivo

GEM Inclusive Sensory Trail



DEVELOPED BY
DESARROLLADO POR



Nature Matters
Academy

ONE
ALBUQUE
RQUE
parks & recreation



Look for **GEMs** at each stop to learn about your surroundings.

Busque GEMS en cada parada para obtener más información sobre sus alrededores.

GROW

by learning about local animals and their super senses.

ENGAGE

by using your senses to explore our local ecosystem.

MAKE CONNECTIONS

by comparing animal adaptations with human tools.

Crece aprendiendo sobre los animales locales y sus súper sentidos.

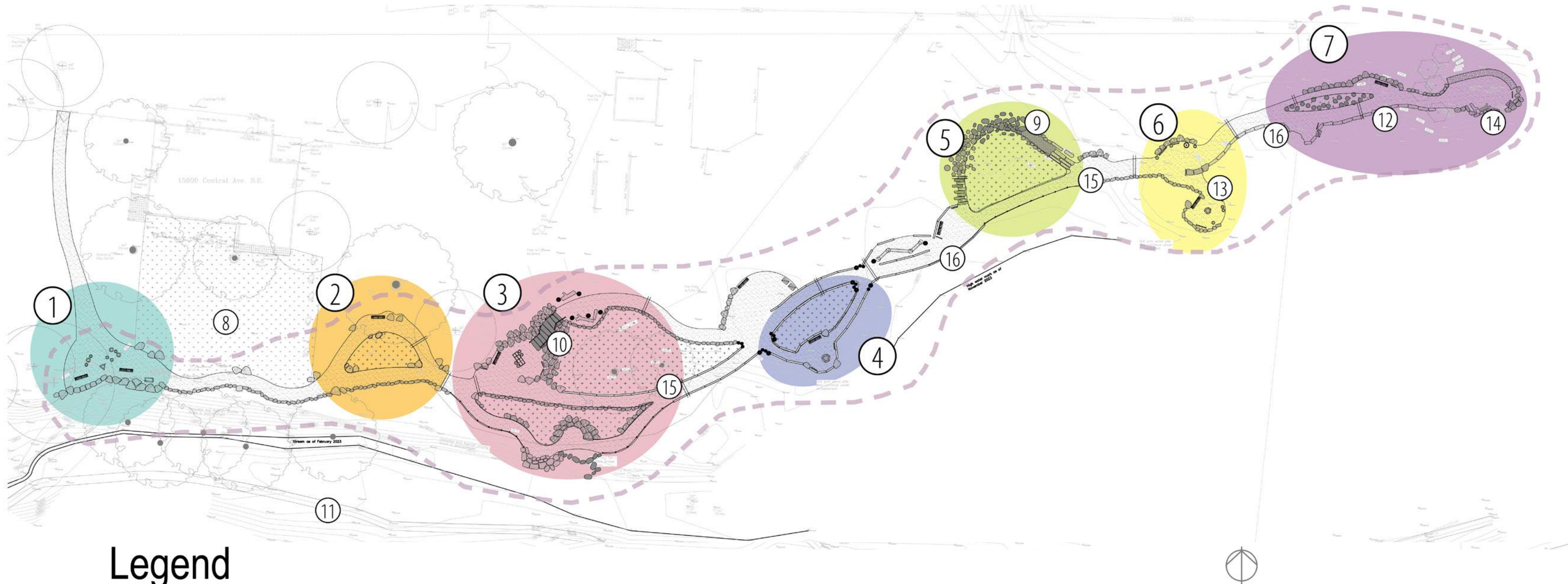
Participe utilizando sus sentidos para explorar nuestro ecosistema local.

Haga conexiones comparando animales con herramientas humanas.



SCAN HERE
for audio description.
ESCANEE AQUÍ PARA OBTENER
UNA AUDIODESCRIPCIÓN.

INCLUSIVE SENSORY NATURE TRAIL



Legend

- | | | |
|---|-----------------------------|--------------------------|
| ① Entry Orientation Node | ⑧ Existing Turfgrass Lawn | ⑮ Stone Path Edge |
| ② Secluded Seating Node | ⑨ Various Surface Materials | ⑯ Log / Timber Path Edge |
| ③ Tactile Station + Proprioceptive / Vestibular | ⑩ Boulder Scramble | |
| ④ Smell Station | ⑪ Tijeras Creek | |
| ⑤ Playful Path Station | ⑫ Vertical Sound Poles | |
| ⑥ Vision Station | ⑬ Screen Lookout Panels | |
| ⑦ Hearing Station | ⑭ Sound Engagement Logs | |

INCLUSIVE SENSORY NATURE TRAIL

CONSTRUCTION PROGRESS

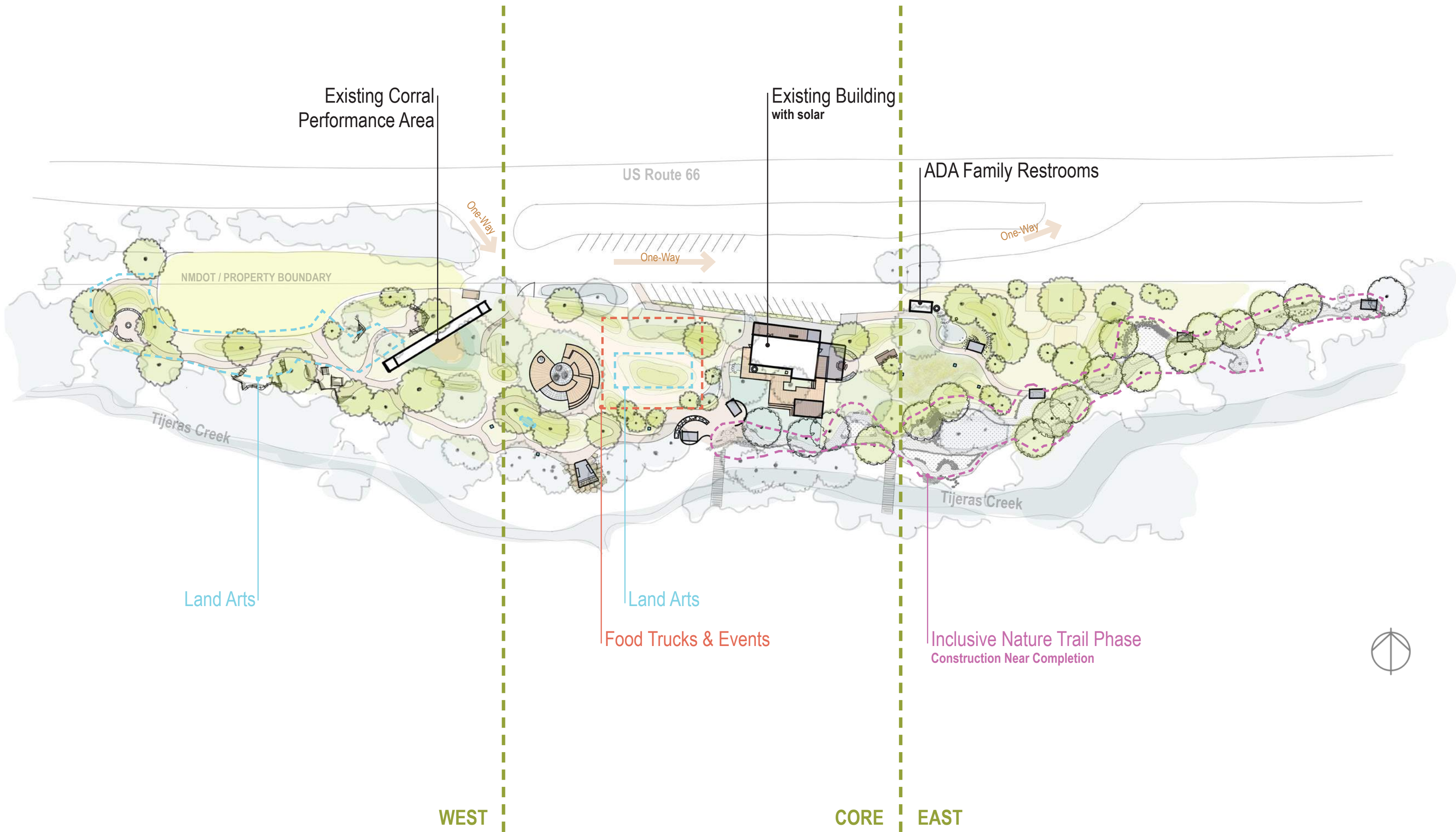




THE BUILDING: EVOLUTION & DESIGN APPROACH

1. Stakeholder investment & need
2. Challenging site conditions
3. Building re-use & outdoor site-based solutions
4. Restroom requirement & need

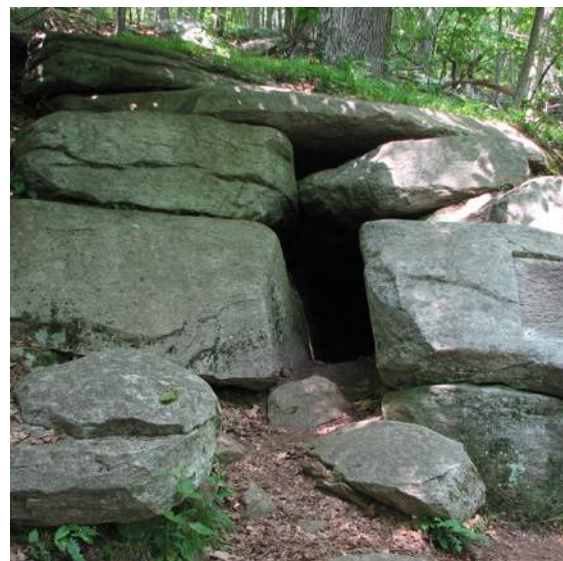
PLAN CONCEPT ELEMENTS | SITE PLAN



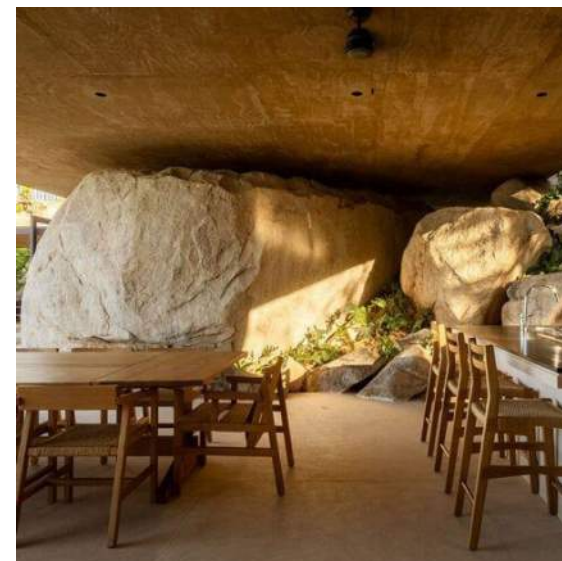
PRECEDENTS | WILDLIFE SHELTERS



BIRD NEST



WOLF DEN



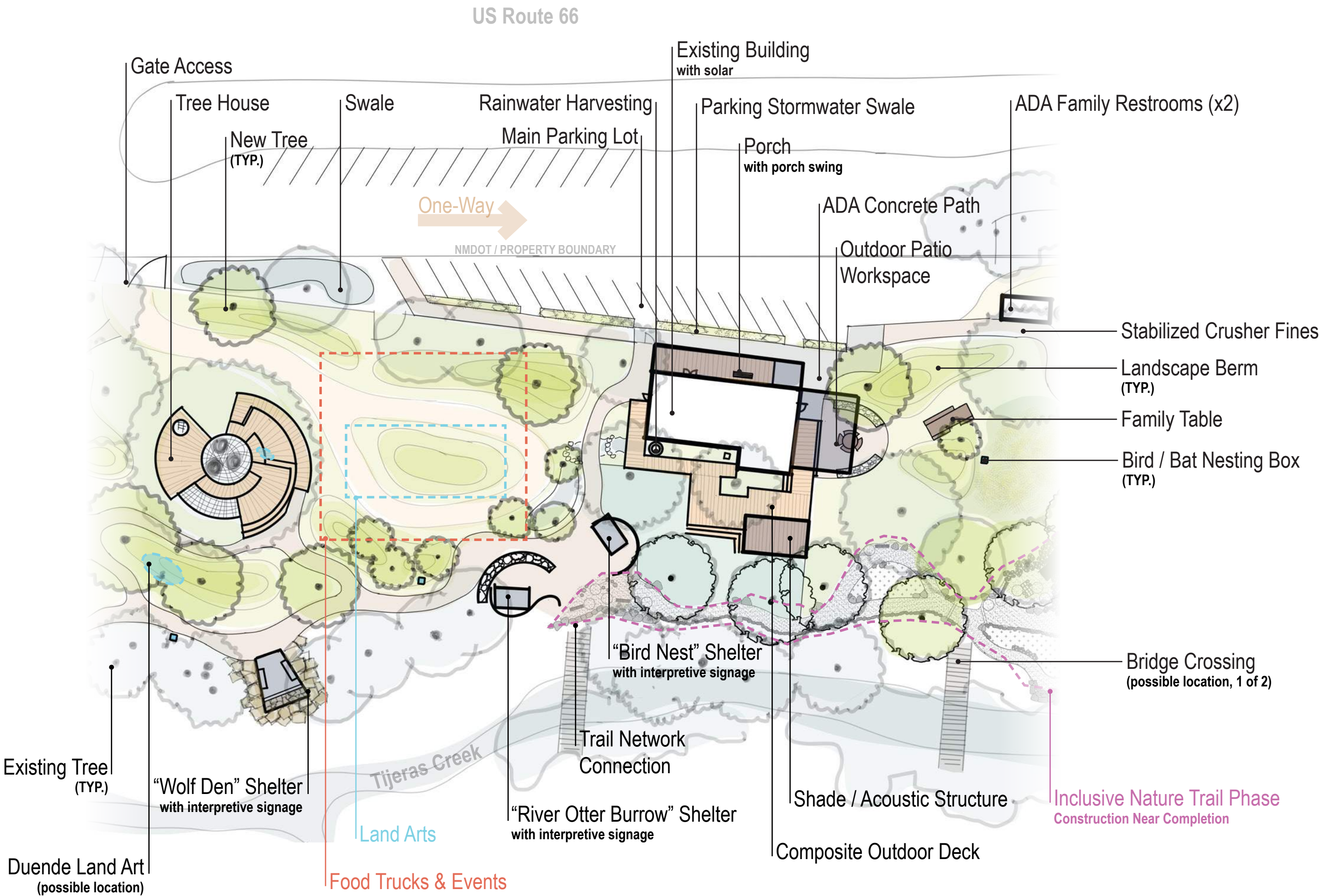
RIVER OTTER BURROW



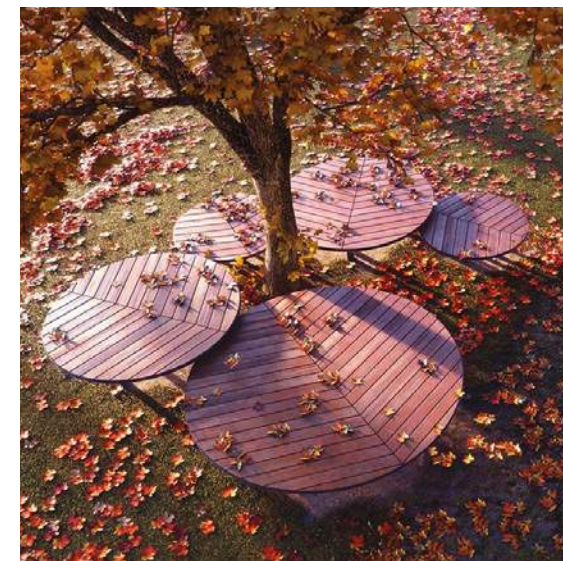
PRECEDENTS | ACOUSTIC DESIGNS



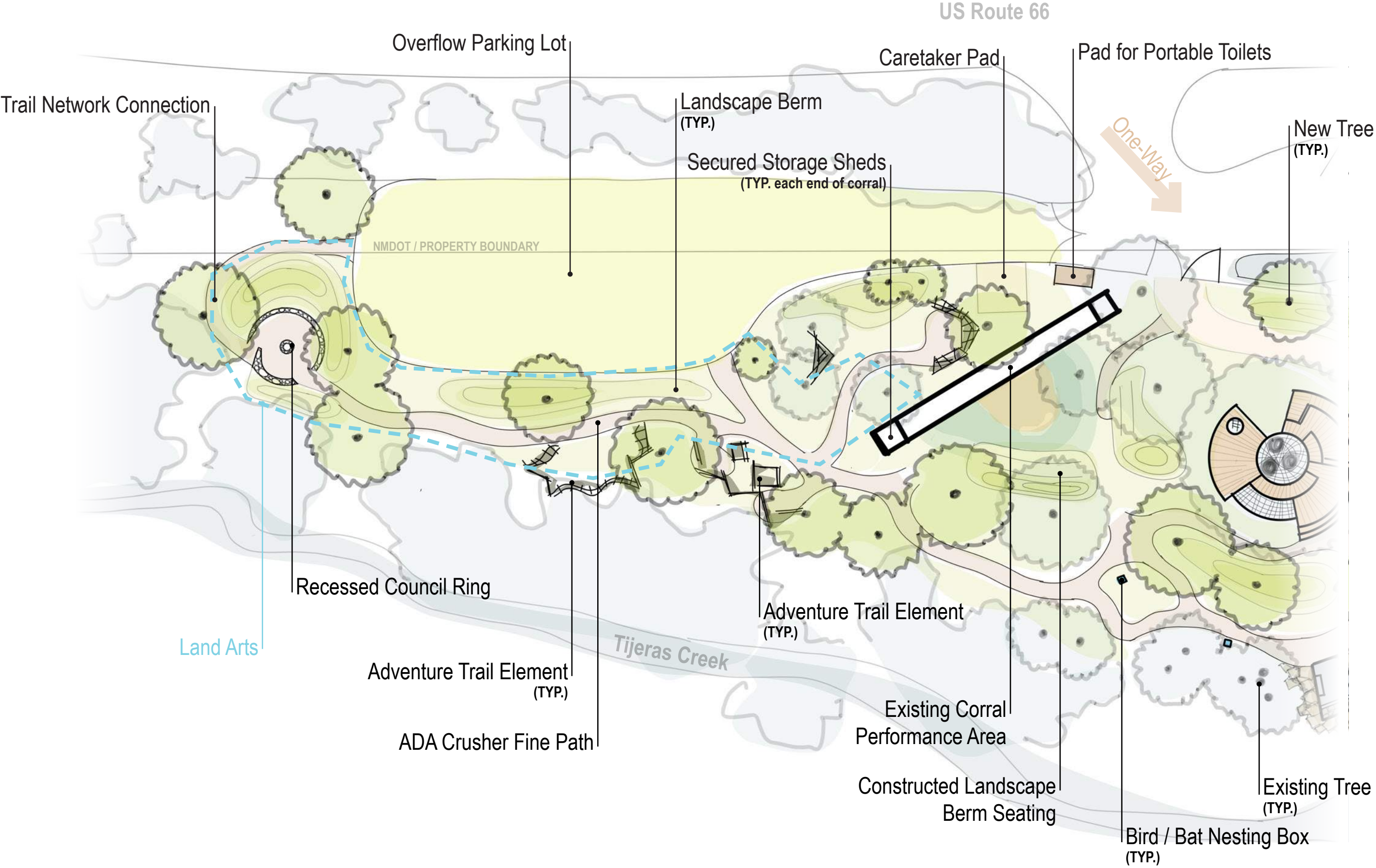
SITE PLAN | CORE



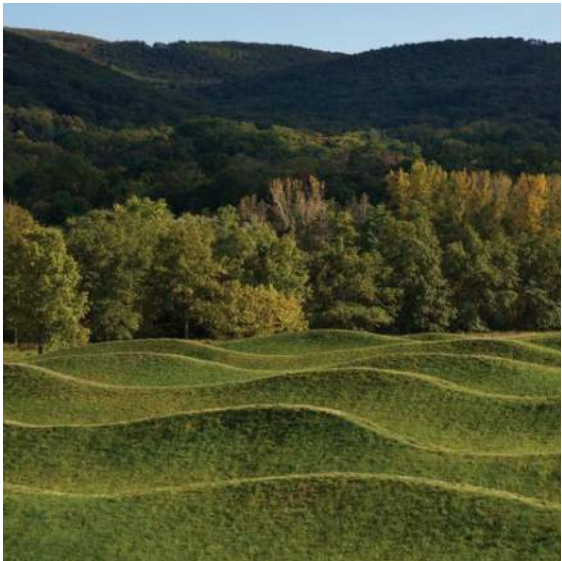
PRECEDENTS | TREE HOUSE



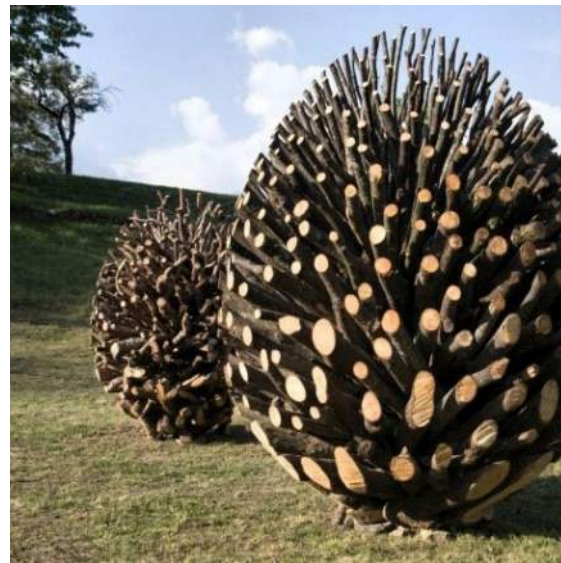
SITE PLAN | WEST



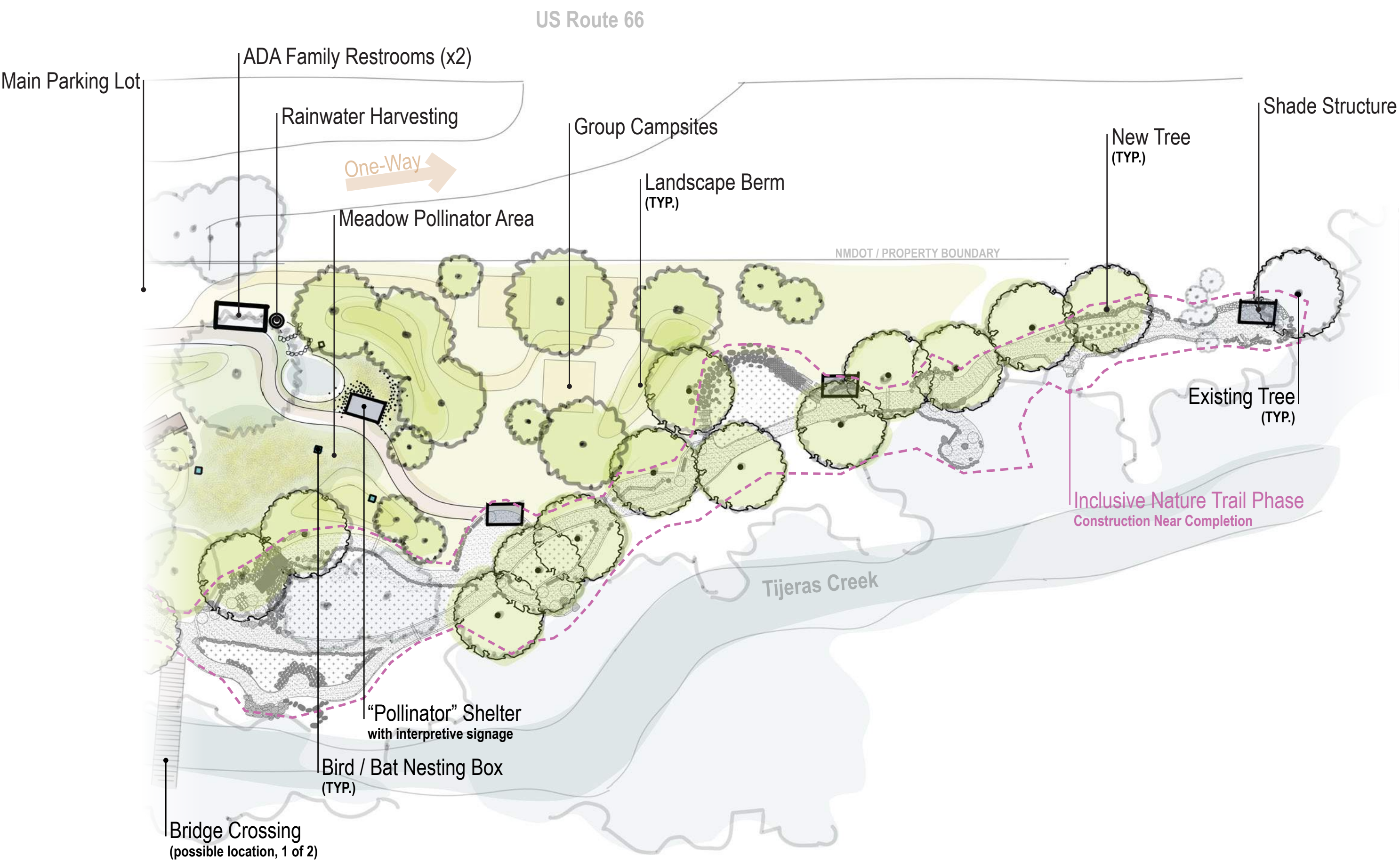
PRECEDENTS | LAND ART



PRECEDENTS | TROLLS, DUENDE, LAND SCULPTURES



SITE PLAN | EAST



PLAN CONCEPT ELEMENTS | SITE PLAN

