

FINAL PLAN

**City of Albuquerque
Solid Waste Management Department**

Cerro Colorado Landfill

Storm Water Pollution Prevention Plan
(SWPPP)

City of Albuquerque
Solid Waste Management Department

18000 Cerro Colorado Rd SW
Albuquerque, NM 87121

Updated: May 2021

Created by:



Updated by:



This Page Intentionally Left Blank,

Overview of SWPPP Development and Availability

The City of Albuquerque (City) Solid Waste Management Department (SWMD) owns and operates the Cerro Colorado Landfill (Landfill). The operations of this facility are considered industrial activities that have the potential to impact storm water quality. Therefore, this facility is required to have a National Pollutant Discharge Elimination System (NPDES) permit. SWMD has applied for coverage under the Multi-Sector General Permit for Storm Water Discharges Associated with Industrial Activity (*MSGP 2021*) (effective March 1, 2021). This Storm Water Pollution Prevention Plan (SWPPP) is required by the *MSGP 2021* and its purpose is to describe SWMD's program for complying with all of the requirements in the *MSGP 2021*. This SWPPP is available at the City's SWMD office located at 18000 Cerro Colorado Rd SW and online at: <https://www.cabq.gov/municipaldevelopment/our-department/engineering/storm-water-management/storm-water-pollution-prevention-plans>.

As of 2020, the facility has ongoing construction within the facility's property. The construction site has an independent SWPPP that was developed for use by the construction company displayed at the boundary of the ongoing construction. The coverage for this SWPPP details activity related to the facility's ongoing industrial activity and not for the activities that are conducted within the active construction site. Construction activities are noted on **Figure 2 in Appendix C**.

Contents

Overview of SWPPP Development and SWPPP Availability	1
Section 1: Facility Description and Contact Information	3
1.1 Facility Information	3
1.2 Contact Information/Responsible Parties.....	4
1.3 Storm Water Pollution Prevention Team (PPT)	5
1.4 Activities at the Facility	5
1.5 General Location Map	6
1.6 Site Maps	6
Section 2: Potential Pollutant Sources	9
2.1 Industrial Activity and Associated Pollutants.....	9
2.2 Spills and Leaks	9
2.3 Non-Storm Water Discharges Documentation.....	10
2.4 Salt Storage	11
2.5 Sampling Data Summary.....	11
Section 3: Storm Water Control Measures	13
3.1 Minimize Exposure	14
3.2 Good Housekeeping.....	14
3.3 Landfill Preventative Maintenance (Sector L Specific).....	14
3.4 Maintenance.....	14
3.5 Spill Prevention and Response.....	15
3.6 Erosion and Sediment Controls	16
3.6.1 Erosion Stabilization (Subsector L Specific).....	22
3.7 Management of Runoff.....	16
3.8 Salt Storage Piles or Piles Containing Salt	16
3.9 MSGP Sector-Specific Non-Numeric Effluent Limits	17
3.10 Employee Training.....	18
3.11 Non-Storm Water Discharges.....	19
3.12 Waste, Garbage and Floatable Debris.....	19
3.13 Dust Generation.....	19
Section 4: Schedules and Procedures	21
4.1 Schedules and Procedures Pertaining to Control Measures.....	21
4.2 Schedules and Procedures Pertaining to Inspections	21
4.3 Schedules and Procedures Pertaining to Monitoring	22
4.3.1 Quarterly Visual Storm Water Assessment	22
4.3.2 State- or Tribal-Specific Monitoring.....	22
4.3.3 Indicator Monitoring.....	22
4.3.4 Benchmark Monitoring.....	22
4.3.5 Impaired Waters Monitoring.....	23
4.3.6 Substantially Identical Outfall Exception.....	23
4.3.7 MSGP Sector Specific Numeric Effluent Limits	23
4.4 Schedules and Procedures Pertaining to Corrective Action	23
4.5 Schedules and Procedures Pertaining to Annual Reporting.....	24
Section 5: Inspections	25
5.1 Routine Facility Inspections.....	25
5.2 Monthly Visual Assessment of Storm Water Discharges	26
5.3 Indicator Monitoring.....	27
5.3.1 pH, Total Suspended Solids (TSS), and Chemical Oxygen Demand (COD).....	28
5.4 Impaired Waters Monitoring.....	28
Section 6: Documentation to Support Eligibility Considerations under Other Federal	

Laws.....	31
6.1 Documentation Regarding Endangered Species.....	31
6.2 Documentation Regarding Historic Properties.....	31
6.3 Documentation Regarding NEPA Review (if applicable)	31
Section 7: SWPPP Certification.....	33
7.1 Person(s) Responsible for SWPPP Preparation.....	33
7.2 SWPPP Certification.....	35
Section 8: SWPPP Modifications	37
SWPPP Appendices.....	39

Appendix A Pollution Prevention Team Members

Appendix B Multi-Sector General Permit 2021

Appendix C Figures

Figure No. 1 Cerro Colorado Landfill General Location Map

Figure No. 2 Cerro Colorado Landfill Site, Drainage, and Activities Plan

Appendix D Evaluation of Non-Storm Water Discharges

Appendix E Best Management Practices and Spill Response Plan

Appendix F Training Records

Appendix G Endangered and Threatened Species Screening Memorandum

Appendix H Historic Properties Preservation Screening Memorandum

Appendix I Copy of the Notice of Intent, Acknowledgement Letter and Delegation of Authority
Letter

Appendix J Documentation of Maintenance to Control Measures

Appendix K Documentation of Corrective Action Taken

Appendix L Sample and Analysis Plans

Appendix M Reports

M1 – Quarterly Routine Facility Inspections

M2 – Quarterly Visual Storm Water Assessment

M3 – EPA Industrial Storm Water Sampling Guidance

M4 – Annual Report Example

M5 – Sample Data Reports

This Page Intentionally Left Blank

Section 1: Facility Description and Contact Information

1.1 Facility Information

Cerro Colorado Landfill Information

Name of Facility: Cerro Colorado Landfill

Street: 18000 Cerro Colorado Rd SW

City: Albuquerque State: NM ZIP Code: 87121

County or Similar Subdivision: Bernalillo County

Permit Tracking Number: NMR053427 (if covered under a previous permit)

Latitude/Longitude (Use **one** of three possible formats, and specify method)

Latitude:

Longitude:

1. 35 ° 00 ' 42.22" N (degrees, minutes, seconds)

1. 106 ° 52 ' 37.23" W (degrees, minutes, seconds)

2. ___ ° ___ ' ___" N (degrees, minutes, decimal)

2. ___ ° ___ ' ___" W (degrees, minutes, decimal)

3. ___ ° N (decimal)

3. ___ ° W (decimal)

Method for determining latitude/longitude (check one):

USGS topographic map (specify scale: _____)

EPA Web site

GPS

Other (please specify): Google Earth Pro

Is the facility located in Indian Country? Yes No

If yes, name of Reservation, or if not part of a Reservation, indicate "not applicable." Not applicable

Is this facility considered a Federal Facility? Yes No

Estimated area of industrial activity at site exposed to storm water: 900 (acres)

Cerro Colorado Landfill Discharge Information

Does this facility discharge storm water into an MS4? Yes No

If yes, name of MS4 operator: _____

Name(s) of water(s) that receive storm water from your facility: Rio Grande, Rio Puerco

Are any of your discharges directly into any segment of an "impaired" water? Yes No

If Yes, identify name of the impaired water (and segment, if applicable): Rio Grande [Arroyo Canas to Rio Puerco]

Identify the pollutant(s) causing the impairment: E.Coli, Aluminum, and Copper

For pollutants identified, which do you have reason to believe will be present in your discharge? Organics such as E. Coli contributing to reduced dissolved oxygen

For pollutants identified, which have a completed TMDL? E. Coli

References: 1) 2020-2022 State of New Mexico Clean Water Act §303(d)/ §305(b) Integrated Report. 2) NMED Surface Water Quality Bureau list of TMDLs <http://www.nmenv.state.nm.us/swqb/TMDL/List>.

Location of Discharge Point(s):

CC01:

Latitude:
35 ° 00 ' 39.36" N (degrees, minutes, seconds)

Longitude:
106 ° 53 ' 00.83" W (degrees, minutes, seconds)

CC02:

Latitude:
35 ° 00 ' 16.50" N (degrees, minutes, seconds)

Longitude:
106 ° 53 ' 05.60" W (degrees, minutes, seconds)

Do you discharge into a receiving water designated as a Tier 2 (or Tier 2.5) water? Yes No

Are any of your storm water discharges subject to effluent guidelines? Yes No

If Yes, which guidelines apply? 40 CFR/Part 445, Subparts A & B

Primary SIC Code or 2-letter Activity Code: LF, and 4212

Identify your applicable sector and subsector: Sector L – Landfills, Land application Sites and Open Dumps, Subsector L1 – All Landfill, Land Application sites and Open Dumps, Sector P – Land Transportation And Warehousing, Subsector P1-Motor Freight Transportation and Warehouse

1.2 Contact Information/Responsible Parties

Facility Owner/Operator:

City of Albuquerque Solid Waste Management Department
4600 Edith Boulevard NE
Albuquerque, NM 87107
Matthew Whelan
(505) 761-8100
mwhelan@cabq.gov

SWPPP Primary Contact:

Jake Daugherty
Office: (505) 761-8324
Cell: (505) 264-0618
ddaugherty@cabq.gov

SWPPP Secondary Contact:

Michael Buchanan
Office: (505) 768-3910
Cell: (505) 250-6880
mbuchanan@cabq.gov

24-HOUR EMERGENCY CONTACT (S)

MICHAEL BUCHANAN

(505) 768-3910

(505) 250-6880

JAKE DAUGHERTY

(505) 761-8324

(505) 264 -0618

Spill Response Plan:

Refer to Appendix E

Signage is to be posted where publicly visible with the contact information for the facility and the associated representative from EPA Region 6. The signage will also indicate where this SWPPP can be found publicly.

1.3 Storm Water Pollution Prevention Team (PPT)

The storm water pollution prevention team (PPT) is comprised of representatives from the City's SWMD. The responsibility of the PPT is to oversee development of the SWPPP and for implementing and maintaining control measures and taking corrective actions when required. A list of PPT members and contact information is provided in **Appendix A**. A summary of PPT members' responsibilities follows.

- SWMD Superintendent - Responsibilities include SWPPP development and management, facility inspections, storm water monitoring, annual training, EPA annual reporting, NOI submission, spill response and reporting, evaluation of spill data to identify preventative measures, etc.
- PPT Members - Responsibilities include NOI submission, implementation of the SWPPP, quarterly inspections, annual training, implementation of best management practices (BMPs), spill response and reporting, etc.

Each PPT member is provided an electronic copy of the SWPPP and *MSGP 2021*. It is the responsibility of the PPT members to maintain their copy of the SWPPP and ensure its completeness and availability and to fully implement the procedures and best management practices (BMPs). **Appendix A** shall be updated periodically to reflect changes in personnel.

The *MSGP 2021* is included as **Appendix B** of this SWPPP.

1.4 Activities at the Facility

The Landfill is a permitted solid waste facility that accepts residential municipal solid waste (MSW), commercial and non-hazardous special wastes for disposal (yard waste/white goods, "special waste streams": sludge, offal, industrial solid waste, petroleum contaminated soils, spill of a chemical substance, and treated formerly characteristic hazardous waste). Large waste streams received by the Landfill come via tractor trailers from the Eagle Rock Convenience Center, Don Reservoir Convenience Center, Montessa Park Convenience Center, East Mountain Transfer Station and Bernalillo County residential pick-up. A majority of the waste delivery to the Landfill comes from SWMD trucks, however the Landfill will accept independent haulers who have an account with the SWMD or pay with cash.

For all solid waste and collection vehicles entering the Landfill, two phases of waste screening are performed to check for prohibited waste. Inspections performed at random are carried out three times a day to ensure only permissible waste is being unloaded in the Landfill. The other method of waste screening is for operators and facility personnel to visually observe the loads being deposited.

Solid waste is placed and compacted into lined cells and covered using dedicated landfill equipment. Currently, of the eighteen landfill cells, cells one through nine are open and active and seven through

nine are being filled. In the near future, cells one through three, along with parts of Cells 4 and 6, will be capped and closed. The lined portion of the Landfill includes a leachate collection and conveyance system. Leachate is transferred from the collection system by dedicated submersible pumps at the leachate extraction points and conveyed to the leachate evaporation pond by gravity. Specific activities at the Landfill include:

- Solid waste handling and disposal;
- Glass Crushing;
- Green waste processing and composting;
- Equipment and vehicle maintenance;
- Equipment and vehicle washing;
- Equipment and vehicle fueling;
- Petroleum hydrocarbon soil treatment; and
- Minor building and grounds maintenance.

Aside from waste acceptance, the Landfill has an area in the southwest corner dedicated to the acceptance and handling of green waste. The green waste is mulched and/or composted as appropriate and utilized onsite or sent to Montessa Park Convenience Center for sale to customers. Collected used tires are transported offsite for recycling.

1.5 General Location Map

The general location of the Landfill is presented in **Figure 1** of **Appendix C**. The layout of the facility is shown on **Figure 2** of **Appendix C** along with the direction of storm water flow, outfall locations (also referred to herein as “storm water monitoring points” or “storm water drainage points”), and illustration of areas covered by this SWPPP.

1.6 Site Maps

As required in Section 6.2.2.3 of the *MSGP 2021*, the figures located in **Appendix C** include the items listed below.

- Site Plan Figures
 - Boundary of the property and size in acres
 - Location and extent of significant structures and impervious surfaces (evident on aerial photograph)
 - Location where any of the following may be exposed to precipitation or surface runoff: active and closed landfill cells or trenches, active and closed land application areas, locations where open dumping occurring or has occurred, locations of any known leachate springs or other areas where uncontrolled leachate may comingle with runoff, and leachate collection and handling systems. (Subsector 8.L.6.1 specific.)

- Drainage Plan Figures
 - Directions of storm water flow
 - Locations of all existing structural storm water control measures
 - Locations of all storm water conveyances including ditches, pipes, and swales
 - Locations of all storm water monitoring points
 - Locations of all receiving waters in the immediate vicinity of the Landfill
 - Locations of storm water drainage points, with a unique identification code for each drainage point
 - Municipal separate storm sewer systems, where your storm water discharges to them.

- Activity Plans Include:
 - Locations of potential pollutant sources identified under MSGP 2021, Part 6.2.3.2
 - Locations and sources of run-on to the site from adjacent property that contains significant quantities of pollutants.
 - Locations of the following activities where such activities are exposed to precipitation:
 - Loading/unloading areas
 - Vehicle and equipment maintenance and/or cleaning areas
 - Locations used for the treatment, storage, or disposal of wastes
 - Liquid Storage Tanks
 - Transfer areas for substances in bulk
 - Machinery

- Non-Storm Water Discharges and Recent Spills Figure

If identified, the following items shall be located as appropriate:

 - Locations and descriptions of all non-storm water discharges identified under MSGP 2021, Part 1.2.2.1
 - Locations where significant spills or leaks identified under MSGP 2021, Part 6.2.3.3 have occurred

- Not Applicable – The following are not applicable as they are not in existence at the Landfill
 - Processing and storage areas

- Immediate access roads and rail lines used or traveled by carriers of raw materials, manufactured products, waste material, or by-products used or created by the facility.
- Locations of all receiving waters in the immediate vicinity of the Landfill, with arrows point to the direction to the receiving waters through the City MS4 System.

Section 2: Potential Pollutant Sources

2.1 Industrial Activity and Associated Pollutants

Table 1 describes industrial activities performed at the Landfill and the potential pollutants associated with them.

Table 1
Industrial Activities Performed at the Landfill and Associated Potential Pollutants

Industrial Activity	Associated Potential Pollutants
Earth and Soil Movement	Soil particles
Equipment Cleaning and Degreasing	Degreasing fluid, oil, wash water.
Glass Crushing	Residual fine glass particles.
Facility-used Chemical Storage	Motor oil, antifreeze coolant, grease/lubricant, and hydraulic fluid.
Fuel Storage and Delivery	Unleaded, diesel.
Leachate Storage	MSW leachate
Salt Storage/Road Maintenance	Salt, solid waste (floatables)
Tire Storage	Rubber particles, oils and lubricants.
Vehicle and Equipment Maintenance	Motor oil, antifreeze coolant, grease/lubricant, hydraulic fluid diesel and gasoline.
Vehicle and Equipment Storage	Motor oil, antifreeze, coolant, grease/lubricant, hydraulic fluid, diesel and gasoline.
Vehicle and Equipment Washing	Vehicle wash water, detergent, oil residue, municipal solid waste leachate, including E.Coli.
Waste Handling and Disposal	Used oil, petroleum contaminated soils.
Waste Transferring Activities	Municipal solid waste leachate, non-hazardous solid waste, green waste.
Welding and Metal Storage	Heavy metals.

2.2 Spills and Leaks

Table 2.1 summarizes locations within the Landfill where spills have the potential to occur. **Table 2.2** summarizes locations within the Landfill where spills have occurred in the past three years.

Table 2.1
Potential Location for Spills

Location
Leachate evaporation pond and leachate extraction point
Pumps for extracting liquid material from storage tanks/drums
Maintenance Fluid Storage Area
Maintenance Shops
Vehicle and Equipment Storage Area
Vehicle and Equipment Wash Area
Fuel Storage Area

**Table 2.2
Description of Spills/Leaks
(Past 3 Years)**

Date	Location	Outfalls
No major spills or leaks have occurred in the past three years.		

No major spills or leaks have occurred in the past three years at the Landfill that would impact the drainage/discharge points. The spill locations are identified on Figure 2 of Appendix C. If such a major spill or leak should occur in the future, they will be identified in this section of the SWPPP and shown on Figure 2 of Appendix C.

Reporting Process: All operators will report spills greater than 5 gallons to the Superintendent. The following information must be reported:

- Date and time
- Responsible party
- Fluid type and quantity
- Spill location and surface (concrete, asphalt, soil)
- Brief description of activity causing spill

The Environmental Compliance Officer will follow up and notify operator if any additional local, state, or federal reporting is required.

2.3 Non-Storm Water Discharges Documentation

Date of evaluation: February 18, 2021

Description of the evaluation criteria used:

The Landfill was visually assessed, photographed, and documented. The summary reports of the evaluation are included in **Appendix D**. Permissible non-storm water discharges permissible under this SWPPP include:

- Discharges from firefighting activity,
- Waterline flushing,
- External building wash down (specifically allowed under MSGP 2021 without the use of detergents assuming no detrimental effect of storm water quality), and
- Incidental air conditioning condensate.

All site areas, including presumed drainage ways were observed during the evaluation. No non-storm water discharges were observed at the Landfill. No actions were necessary as a result of the evaluation because no unauthorized discharges were identified.

2.4 Salt Storage

Salt that is used for road deicing is stored in a pile west of the Intermediate Processing Facility (IPF) building on site.

2.5 Sampling Data Summary

Storm water has been sampled for effluent limitations as per effluent limitation guidelines, as noted in **Section 3.8** of this SWPPP, impaired waters and benchmark sampling. Sampling occurs as noted in the Sample and Analysis Plan is available in this SWPPP in **Appendix L** for all sampling and monitoring plans. Refer to **Appendix M** for Sample Data and Data Summary Reports.

This Page Intentionally Left Blank

Section 3: Storm Water Control Measures

Storm water controls at the Landfill are instituted in the form of BMPs designed to address activities that are potential sources of storm water pollution. Each BMP outlines measures designed to reduce the potential for storm water pollution. There are currently eight BMPs implemented at the Landfill. The BMPs are listed in **Table 3** and presented in their entirety in **Appendix E**.

Table 3
Summary of Best Management Practices

Material Processing & Maintenance		
BMP-1	General BMPs	Prevent or reduce the discharge of pollutants to storm water from all industrial operations with potential to impact storm water.
BMP-2	Reduce Municipal Solid Waste Exposure to Storm Water	Prevent or reduce the discharge of pollutant to storm water from transfer of municipal solid waste (MSW) to the landfill working face area. Prevent run-of and runoff from waste management areas.
Maintenance		
BMP-3	Vehicle and Equipment Maintenance	Prevent or reduce the discharge of pollutants to storm water from all industrial operations with potential to impact storm water.
Storage and Material Processing		
BMP-4	Outdoor Handling, Storage, and Disposal of Waste and Materials	Prevent or reduce the discharge of pollutants to storm water from loading and unloading of material. Prevent run-on and runoff from chemical storage and waste management areas.
Storm Water Control Structures		
BMP-5	Vehicle and Equipment Storage	Prevent or reduce the discharge of pollutants to storm water from outdoor vehicle and equipment storage areas.
BMP-6	Structural Storm Water Controls	Select, implement, and maintain structural storm water controls to manage the volume and/or quality of storm water leaving the property. Storm water volume controls should be installed to manage storm water volume by delaying diverting or reducing the amount of storm water runoff from the site. Storm water quality controls should be installed to prevent pollutants from contacting storm water or removing pollutants from storm water.
Fuel Storage and Delivery		
BMP-7	Fuel Storage and Delivery	Prevent fuel spills and leaks and reduce their impacts to storm water. Prevent or reduce the discharge of pollutants to storm water during fueling operations and fuel storage.
Cleaning		
BMP-8	Vehicle and Equipment Cleaning	Prevent or reduce the discharge of pollutants to storm water from vehicle and equipment washing and equipment degreasing.

3.1 Minimize Exposure

In order to minimize the exposure of material storage areas to rain, snow, snowmelt, and runoff; and minimize pollutant discharge from industrial activities performed at the LANDFILL, performing and locating these activities indoors or protecting them with storm resistant cover will be implemented. The following should be performed as needed:

- Use grading, berming, or curbing to prevent runoff of contaminated flows and divert run-on away from these areas;
- Locate materials, equipment, and activities so that potential leaks and spills are contained or able to be contained or diverted before discharge;
- Clean up spills and leaks promptly using dry methods (e.g., absorbents) to prevent the discharge of pollutants;
- Store leaky vehicles and equipment indoors or, if stored outdoors, use drip pans and absorbents;
- Use spill/overflow protection equipment;
- Portable toilets are to be secured with stakes to prevent pollutants from contaminating storm water discharge;
- Roll- off bins are to be stored within a bermed area when parked on site or covered either under permanent storm resistant coverage or with temporary tarp; and
- Perform all vehicle and/or equipment cleaning operations indoors, under cover, or in bermed area that prevent runoff and run-on and also that capture any overspray.

3.2 Landfill Preventative Maintenance Activities (Sector L Specific)

As part of the preventative maintenance program, the following will all be maintained: all elements of leachate collection and treatment systems, to prevent commingling of leachate with storm water; the integrity and effectiveness of any intermediate or final cover (including repairing the cover as necessary), to minimize the effects of settlement, sinking and erosion.

3.3 Good Housekeeping

Good housekeeping is regularly conducted at all areas of the Landfill. The Landfill staff inspect the facility monthly for presence of potential storm water pollutants (solid waste, hazardous fluids, sediment, etc.), which are properly disposed of if present. Additionally, debris is gathered along the interior fence lines and raked up for disposal on a frequent basis.

3.4 Maintenance

Good engineering practices are performed to prevent spills and leaks from occurring from stored vehicles. During routine facility inspections, the Landfill employees inspect all vehicles and equipment to ensure it is in good repair with no drips or leaks evident. This includes:

- Performing inspections and preventive maintenance of storm water drainage, source controls, treatment systems, and equipment that could fail and result in contamination of storm water.
- Maintain 2-foot of freeboard in the leachate storage pond and evacuate accumulated liquid as required.
- Routinely monitor and remove any vegetation growth within leachate pond, as the root system of the plants (e.g., salt cedar) will compromise the liner of the pond.
- Diligently maintaining non-structural control measures (e.g., keep spill response supplies available, personnel appropriately trained).

3.5 Spill Prevention and Response

As stated in BMPs listed above, a facility-specific Spill Response Plan is posted in all areas where spills and/or leaks are likely to occur. At the Landfill, spill response plans are posted in conspicuous places and as possible near a telephone. Spill response plans shall be posted at the:

- Administration building;
- Maintenance areas;
- Chemical Storage area;
- Vehicle wash area;
- Leachate pond and leachate extraction point(s); and
- Fueling area.

Spill response procedures and contact information can be found on the spill response plans. A copy of the spill response plan is located in **Appendix E**. Spill prevention and response procedures should be assessed on a quarterly basis for any facility and personnel changes that might affect the efficiency in responding to a spill or release, to include:

- Develop training on the procedures for expeditiously stopping, containing, and cleaning up leaks, spills, and other releases. As appropriate, execute such procedures as soon as possible;
- Notify appropriate facility personnel when a leak, spill, or other release occurs.

Spill cleanup materials are adequately stocked, readily accessible, and labeled at all times. Spent cleanup materials are disposed of immediately and properly. All tanks, drums, buckets, and other storage containers are properly labeled and if stored outdoors, or indoors directly adjacent to a doorway, they encompass secondary containment.

Secondary containment for all fluids is required. It is not expected that fluids will be stored at the facility but in general, specific areas where secondary containment is required include:

- Chemical storage,
- Fuel storage, and
- Used oil storage.

Additionally, any parked roll-off containers or waste disposal bins are to be closed/covered. If tarping or lids are not able to be used for coverage, the roll-off containers must be under permanent coverage, such as a carport or storage structure. If roll-off containers are not covered, the roll-off containers must be within berming to create secondary containment for the stored containers.

3.6 Erosion and Sediment Controls

Erosion is evaluated monthly during storm water monitoring events and annually during the dry weather evaluation of the storm water drainage points. Storm water management structures are shown on **Figure 2 in Appendix C**.

3.6.1 Erosion stabilization (Subsection L specific)

Temporary stabilization (e.g., temporary seeding, mulching, and placing geotextiles on the inactive portions of stockpiles) will be provided for the following in order to minimize discharges of pollutants in storm water: materials stockpiled for daily, intermediate, and final cover; inactive areas of the landfill; and landfill areas that have final cover material installed but where vegetation has yet to establish itself.

3.7 Management of Runoff

Precipitation runoff flows overland from east to west. Two existing arroyos intersect the site which convey flow from atop the mesa to the east and intercept runoff from within the landfill site. On-site controls, including berms, channels and ponds are maintained to prevent discharge of impacted water into these historic channels.

3.8 Salt Storage Piles or Piles Containing Salt

Salt that is used for deicing is stored in a pile west of the Intermediate Processing Facility (IPF) building on site. The pile is bermed and tarped to reduce exposure to the storm water discharge.

3.9 MSGP Sector-Specific Numeric Effluent Limits

The Landfill is subject to the Effluent Limitations listed in **Table 4** (as described in subsection 8.L.11 of the MSGP 2021. The effluent limitations will be monitored once per year per Subsection L of MSGP 2021.)

Table 4
Effluent Limitations Based on Effluent Limitations Guidelines

Industrial Activity	Parameter	Effluent Limitation
Discharges from non-hazardous waste landfills subject to effluent limitations in 40 CFR Part 445 Subpart B.	Biochemical Oxygen Demands (BOD5)	140 mg/L, daily max. maximum
		37 mg/L, monthly avg. max. maximum
	Total Suspended Solids (TSS)	88 mg/L, daily max. maximum
		27 mg/L, monthly avg. max. maximum
	Ammonia	10 mg/L, daily max. maximum
		4.9 mg/L, monthly avg. max. maximum
	Alpha Terpineol	0.033 mg/L, daily max. maximum
		0.016 mg/L, monthly avg. max. maximum
	Benzoic Acid	0.12 mg/L, daily max. maximum
		0.071 mg/L, monthly avg. max. maximum
	p-Cresol	0.025 mg/L, daily max. maximum
		0.014 mg/L, monthly avg. max. maximum
	Phenol	0.026 mg/L, daily max. maximum
		0.015 mg/L, monthly avg. max. maximum
Total Zinc	0.20 mg/L, daily max. maximum	
	0.11 mg/L, monthly avg. max. maximum	
pH	Within the range 6-9 standard pH units (s.u.)	

Grab samples used for Effluent Limitations Monitoring are collected annually. An exceedance of the effluent limitations listed above are a permit violation. If any monitoring value exceeds a numeric effluent limitation contained in his permit, the facility must indicate the exceedance on a "Change NOI" form in the NPDES eReporting Tool (NeT), and the Landfill must conduct follow-up monitoring within 30 calendar days (or during the next measurable storm event, should none occur within 30 days) of implementing corrective actions as described in **Section 4.4** herein.

If follow up monitoring exceeds the applicable effluent limitation the Landfill must adhere to the following procedure:

- a) Submit and Exceedance Report no later than 30 days after receiving the laboratory result consistent with **Part 7.5 of MSGP 2021**.
- b) Continue monitoring, at least quarterly, until storm water discharge is in compliance with the effluent limits, or until EPA waives the requirement for additional monitoring. When the discharge is back in compliance with the effluent limitations, the facility must indicate this on a "Change NOI" form, as described in **Part 7.3 of MSGP 2021**.

3.10 Employee Training

The SWPPP PPT Leader is responsible for providing training to the Landfill employees regarding the components and goals of this SWPPP. The City now has SWPPP training available online via the Public Service University (PSU). Employees who work in areas where industrial materials or activities are exposed to storm water, or who are responsible for implementing activities to meet the conditions of the MSGP 2021 are required to have appropriate storm water pollution prevention training.

Training will be provided to Landfill employees by qualified trainers at least annually, with additional training made available as required for new hires. Elements to be included in the training sessions include the following:

- Purpose, need, and requirement for storm water pollution prevention;
- Examples of unallowable non-storm water discharges;
- Availability, layout, and contents of the SWPPP;
- Description and applicability of the BMPs;
- Good housekeeping and preventative maintenance requirements;
- Material management practices;
- Spill response procedures;
- Spill reporting requirements;
- Corrective action reporting;
- Used oil and spent solvent management;
- Fueling procedures;
- Proper painting procedures;
- Used battery management;
- Documentation requirements; and
- Notice of Intent (NOI) submission (when applicable).

All training events are documented including the date of training, identification of the trainer and attendees, and subjects covered. Training records for SWMD's train-the-trainer session shall be included in **Appendix F** of this SWPPP.

Reporting Process: Following each training session, SWMD will distribute training certificates by email to all staff and PPT members that attend training and submit a training assessment.

3.11 Non-Storm Water Discharges

An evaluation of non-storm water discharges was performed as described in Section 2.3 Non-Storm Water Discharges Documentation. No non-storm water discharges were identified during the evaluation. If any future non-storm water discharges are observed at the facility, details of the discharge must be logged on the form in **Appendix D** and included on the Site Plan (**Figure 2** of **Appendix C**).

3.12 Waste, Garbage and Floatable Debris

Litter at the Landfill is routinely managed including the use of fences, landfill equipment and manual labor. In addition, the Landfill turns away truckloads of paper, light plastics, cardboard and foam type material when sustained wind speeds reach 40 miles per hour.

3.13 Dust Generation

The majority of the access roads are paved to minimize dust generation, however, there are interior roads that are unpaved. All vehicles and trucks enter and exit the Landfill property of paved roads. In addition, a water truck is used to apply water to areas where dust is frequently generated (i.e., dirt roadways, working face of landfill cells and where dust potentially presents a problem to the overall operation of the facility). The site is surrounded by vegetation and fencing keeping much windblown material within the facility. All loads of waste brought to the Landfill are required to be covered and additional charges are assessed for uncovered loads. SWMD staff that drive transfer trailers are responsible for cleaning their vehicles and properly disposing of trash prior to leaving the facility.

This Page Intentionally Left Blank

Section 4: Schedules and Procedures

4.1 Schedules and Procedures Pertaining to Control Measures

Schedules and procedures pertaining to control measures are discussed in Section 3 Storm Water Control Measures. Detailed procedures are provided in the form of BMPs included in **Appendix E**.

4.2 Schedules and Procedures Pertaining to Inspections

During normal facility operating hours inspections of areas of the facility covered by the requirements in this permit are conducted, including, but not limited to, the following:

- Areas where industrial materials or activities are exposed to storm water;
- Areas identified in the SWPPP and those that are potential pollutant sources (see Part 6.2.3 MSGP 2021);
- Areas where spills and leaks have occurred in the past three years;
- Discharge points; and
- Control measures used to comply with the effluent limits contained in this permit.

During the inspection, the inspector will examine or look out for the following:

- Industrial materials, residue or trash that may have or could come into contact with storm water;
- Leaks or spills from industrial equipment, drums, tanks and other containers;
- Offsite tracking of industrial or waste materials, or sediment where vehicles enter or exit the site;
- Tracking or blowing of raw, final or waste materials from areas of no exposure to exposed areas;
- Erosion of soils at the facility, channel and streambank erosion and scour in the immediate vicinity of discharge points (see Part 2.1.2.5 MSGP 2021);
- Non authorized non-storm water discharges (see Part 2.1.2.9 MSGP 2021);
- Control measures needing replacement, maintenance, or repair.

During an inspection occurring during a storm water event or discharge, control measures implemented to comply with effluent limits must be observed to ensure they are functioning correctly. Discharge points must also be observed during this inspection. If such discharge locations are inaccessible, nearby downstream locations must be inspected. If any non-compliant issues are identified during these inspections, the corrective action schedule outlined in Section 4.4 of this SWPPP will be implemented and the SWPPP will be reviewed to determine if modifications are necessary to meet the requirements of the MSGP 2021.

Further procedures for routine facility inspections are provided in **Section 5.1** herein.

Schedule

Routine facility inspections will be conducted at least **once a month** during the entire permit term, or in some instances more frequently (e.g., weekly). At least once each calendar year, the inspection will be conducted during a period when storm water discharge is occurring.

Persons Responsible for Inspections

Routine facility inspections will be conducted by qualified personnel. The inspections should be conducted by a PPT member or an appropriately trained staff member. A full list of Landfills' PPT members is included in **Appendix A**. Inspectors must consider the results of visual and analytical monitoring (if any) for the past year when planning and conducting inspections.

4.3 Schedules and Procedures Pertaining to Monitoring

4.3.1 Quarterly Visual Storm Water Assessment

Once per annual quarter during the entire permit term, the designee will conduct **quarterly visual storm water assessments** at the designated storm water drainage points; CC01 and CC02. During quarters without a rainfall event resulting in discharge, the monitoring event will be rescheduled to occur during the predominately rainy season (July – September). During adverse weather conditions which may prevent collection of a sample (i.e. local flooding, high winds, electrical storms, or other dangerous situations), the monitoring event will be substituted with the next storm event. Refer to **Section 5.2** herein for a description of procedures for quarterly visual storm water assessments.

4.3.2 State- or Tribal-Specific Monitoring

None required.

4.3.3 Indicator Monitoring.

Indicator monitoring for storm water discharges are required in the MSGP 2021 for three parameters: pH, Total Suspended Solids (TSS), and Chemical Oxygen Demand (COD). This monitoring is required for subsector P1. Indicator monitoring will provide the facility and EPA with a baseline and comparable understanding of industrial storm water discharge quality and potential water quality problems. These values are “report-only” and do not have thresholds for baseline values for comparison, therefore no follow up action is triggered or required. Indicator monitoring is a condition of the MSGP 2021, and thus failure to conduct the monitoring is a permit violation. Refer to **Section 5.3** herein for a description of procedures for indicator monitoring.

4.3.4 Benchmark Monitoring

Benchmark Monitoring is not required for the Landfill. Refer to **Part 8.L.10 of MSGP 2021** for further information.

4.3.5 Impaired Waters Monitoring

Impaired waters monitoring is required **annually in the first year of permit coverage** and again in **the fourth year of permit coverage** as described in *Section 4.2.5.1.a of the MSGP 2021 Facilities Required to Monitor Stormwater Discharges to Impaired Waters – Discharges to impaired waters without an EPA-approved or established TMDL of the MSGP 2021*. If a pollutant causing impairment is detected, annual monitoring must continue. Refer to **Section 5.5** herein for description of procedures for Impaired Waters Monitoring.

4.3.6 Substantially Identical Discharge Point Exception

There are no substantially identical discharge points at the Landfill.

4.3.7 MSGP Sector-Specific Numeric Effluent Limits

The Landfill will conduct runoff sampling annually for Numeric Effluent Limits, as described in **Section 3.8** herein.

4.4 Schedules and Procedures Pertaining to Corrective Action

When any of the following conditions occur or are detected during an inspection, monitoring or other means, or if EPA or the Operator of the MS4 through which you discharge informs you that any of the following conditions have occurred, the SWPPP must be reviewed and revised, as appropriate, to minimize pollutant discharge:

- An unauthorized release or discharge (e.g., spill, leak or discharge of non-storm water not authorized by this or another NPDES permit to a water of the United States) occurs at the facility;
- The established storm water control measures are not stringent enough for the storm water discharge to be controlled as necessary such that the receiving water of the United States will meet applicable water quality standards;
- A required control measure was not installed or installed correctly, or is not being properly operated or maintained, and/or;
- A visual assessment shows evidence of storm water pollution (e.g., color odor, floating solids, settled solids, suspended solids, foam).

If construction or a change in design, operation, or maintenance at the Landfill occurs that significantly changes the nature of pollutants discharged via storm water from the facility, or significantly increases the quantity of pollutants discharged, this SWPPP must be reviewed to determine if modifications are necessary to meet the requirements of the MSGP 2021.

When an inspection, monitoring event, or other site observation reveals a condition that may result in storm water pollution, the following corrective action schedule must be implemented:

1. Immediate Actions – Within 24 Hours

- a. Minimize or prevent the discharge of pollutants until a permanent solution is implemented.

- b. Cleanup any contaminated surfaces so that material will not discharge in subsequent storm events.
- c. Document the conditions observed. Documentation should include:
 - 1) Condition triggering the corrective action
 - a) For spills include material, volume, reason causing the release
 - 2) Date/time
 - 3) Location
 - 4) Description of immediate actions taken
 - a) For spills include response actions, date/time cleanup completed, notifications made, and staff involved.
 - 5) Signature of an individual with signatory authority.

2. Subsequent Actions – Within 14 Days

- a. Install or modify a control measure to prevent continued or reoccurring discharge.
- b. Notify the Environmental Compliance Coordinator in writing of what actions were taken (ddaugherty@cabq.gov, mbuchanan@cabq.gov, and MS4Compliance@cabq.gov).
- c. Place written documentation in the corrective action section of the operating SWPPP (**Appendix K**). Documentation should include:
 - 1) Description of corrective actions taken with beginning and end dates.
 - 2) If applicable, document why it is not feasible to have corrective action installation within 14 days and the schedule for completing the controls and making them operational.

4.5 Schedules and Procedures Pertaining to Annual Reporting

The *MSGP 2021* requires an annual report be submitted through the NPDES eReporting Tool (NeT) by January 30th of each year of permit coverage containing information generated from the past calendar year.

Appendix M includes an example annual report form. This report form is included in this SWPPP for reference only; the actual annual report must be submitted through EPA's NeT system which is accessed through the EPA's central Data Exchange website at <https://cdx.epa.gov/>.

Annual reports shall include a summary of the previous year's routine facility inspections, visual quarterly storm water monitoring and any other required storm water monitoring, corrective actions, and Additional Implementation Measure (AIM) documentation.

Section 5: Inspections

Inspections, conducted at the Landfill facility, are documented on standardized inspection forms. Forms will be updated to reflect the current conditions at each facility as required. All completed inspection forms and associated reports will be attached to this SWPPP in the Reports Section (**Appendix M**). Two types of inspections that are conducted at the facility include Routine Facility Inspections and Quarterly Visual Assessment Inspections of Storm Water Discharges.

5.1 Routine Facility Inspections

Routine Facility Inspections must document the findings of the facility inspections and maintain this report (**Appendix M**). The inspection findings must be summarized in the annual report per Part 7.4 of the 2021 MSGP. Document all findings, including but not limited to, the following documentation:

- The inspection date and time;
- The name(s) and signature(s) of the inspector(s);
- Weather information;
- All observations relating to the implementation of control measures at the facility, including:
 - A description of any discharges occurring at the time of the inspection;
 - Any previously unidentified discharges from and/or pollutants at the site;
 - Any evidence of, or the potential for, pollutants entering the drainage system;
 - Observations regarding the physical condition of and around all drainage points, including any flow dissipation devices, and evidence of pollutants in discharges and/or the receiving water;
 - Any control measures needing maintenance, repairs, or replacement;
- Any additional control measures needed to comply with the permit requirements;
- Any incidents of noncompliance; and
- A signed, dated and certified statement.

Specific areas of the facility to be inspected include:

- Fuel storage and dispensing areas;
- Outdoor materials handling and storage areas;
- Areas susceptible to erosion;
- Areas where spills and leaks have occurred in the past three years;
- Storage areas for vehicle/equipment awaiting maintenance;

- Maintenance areas;
- Maintenance fluid storage areas;
- Loading/unloading areas.
- Fueling areas;
- Loading/unloading areas; and
- Vehicle/equipment cleaning areas.

Include monthly discharge visual assessments performed during the facility inspection results of the assessment with the report required in *MSGP 2021* Part 3.2, as long as all components of both types of inspections are included in the report.

5.2 Quarterly Visual Assessment of Storm Water Discharges

Once per annual quarter for the entire permit term, a storm water sample must be collected from the drainage point (except as noted below) and conduct a visual assessment of each of these samples. These samples are not required to be collected consistent with 40 CFR Part 136 procedures but must be collected in such a manner that the samples are representative of the storm water discharge. Guidance on monitoring is available at:

https://www.epa.gov/sites/production/files/2015-11/documents/msgp_monitoring_guide.pdf.

EXCEPTIONS: *For climates with irregular storm water runoff, facilities located in an area where limited rainfall occurs during many parts of the year (e.g., arid or semi-arid climate), samples for the monthly visual assessments may be distributed during seasons when precipitation runoff occurs.*

The visual assessment must be made:

- Of a sample in a clean, colorless glass or plastic container, and examined in a well-lit area;
- On samples collected within the first 30 minutes of an actual discharge from a storm event. If it is not possible to collect the sample within the first 30 minutes of discharge, the sample must be collected as soon as practicable after the first 30 minutes and you must document why it was not possible to take the sample within the first 30 minutes. In the unexpected case of snowmelt, samples must be taken during a period with a measurable discharge from the site; and
- For storm events, on discharges that occur at least 72 hours (three days) from the previous discharge. The 72-hour (three-day) storm interval does not apply if you document that less than a 72-hour (three-day) interval is representative for local storm events during the sampling period.

You must visually inspect or observe the sample for the following water quality characteristics:

- Color
- Odor
- Clarity (diminished)

- Floating solids
- Settled solids
- Suspended solids
- Foam
- Oil sheen
- Other obvious indicators of storm water pollution

Whenever the visual assessment shows evidence of storm water pollution, initiate the corrective action procedures found in Section 4.4 of this SWPPP.

Documentation

Document the results of the visual assessments and maintain this documentation (**Appendix M**). The visual assessment findings must be included in the annual report per *MSGP 2021* Part 7.4. The documentation of the visual assessment must include, but not be limited to:

- Sample location(s);
- Sample collection date and time, and visual assessment date and time for each sample;
- Personnel collecting the sample and performing visual assessment, and their signatures;
- Nature of the discharge (i.e., runoff or snowmelt);
- Results of observations of the storm water discharge;
- Probable sources of any observed storm water contamination; and
- If applicable, why it was not possible to take samples within the first 30 minutes.
Whenever the visual assessment shows evidence of storm water pollution, initiate the corrective action procedures found in Section 4.

5.3 Indicator Monitoring

Indicator monitoring of storm water discharges are required under Sector P – subsector P1 for three total parameters: pH, Total Suspended Solids (TSS), and Chemical Oxygen Demand (COD). This data will provide a baseline and comparable understanding of industrial storm water discharge quality and potential water quality problems.

The indicator monitoring parameters are “report-only” and do not have thresholds or baseline values for comparison, therefore no follow-up action is triggered or required. Indicator monitoring is a permit condition and thus, failure to conduct this monitoring is a permit violation. As noted in Part 2.2.1 of the 2021 MSGP, the storm water discharge will be controlled as necessary such that the receiving water of the United States will meet applicable water quality standards. The samples collected as described below with the following exception, as described in Part 4.1.6 of 2021 MSGP:

EXCEPTIONS: *For climates with irregular storm water runoff, facilities located in an area where limited rainfall occurs during many parts of the year (e.g., arid or semi-arid climate), the schedule of indicator monitoring may be modified provided the facility report the revised schedule directly to EPA by the due date of the first indicator monitoring sample. The Landfill must keep this revised schedule within the SWPPP as specified in Part 6.5 of 2021 MSGP. The Landfill must indicate in Net-DMR any 3-month interval that an indicator monitoring sample was not taken (see Part 4.1.7 of 2021 MSGP).*

5.3.1 pH, Total Suspended Solids (TSS), and Chemical Oxygen Demand (COD)

Applicability and Schedule

Subsector P1 must monitor for pH, TSS and COD. Samples must be analyzed consistent with 40 CFR Part 136 analytical methods.

Indicator monitoring of storm water discharges for pH, TSS and COD will be conducted **quarterly beginning in the first full quarter of permit coverage** as identified in Part 4.1.7 of 2021 MSGP.

5.4 Impaired Waters Monitoring

Impaired waters monitoring is required annual in the first year of *permit* coverage and again in the fourth year of permit coverage, unless a pollutant causing an impairment is detected, in which case annual monitoring must continue. For the Landfill facility, Impaired waters monitoring is conducted for E. Coli only when informed by EPA that monitoring is required. Refer to **Part 4.2.5.1.b** of the **MSGP 2021** for additional information. The facility is additionally required for monitor for Polychlorinated Biphenyl (PCB's), Temperature, Mercury, and Dissolved Oxygen (DO) as follows.

Schedule – First Year of Permit Coverage

Annual samples will be taken by the facility in the first year of permit coverage, which begins in the first full quarter following May 30, 2021. The Landfill facility will monitor for the above listed pollutants using a standard analytical method, see 40 CFR Part 136, once at each discharge point that discharges storm water to impaired waters without an EPA-approved or established TMDL. Consult EPA Region 6 office for additional guidance regarding required monitoring parameters.

If the results indicate the monitored pollutant is not detected in the discharge sample or is within the acceptable range for a given parameter for the Rio Grande, the Landfill facility may discontinue monitoring for that pollutant for the next two years. Impaired waters monitoring must resume for that pollutant in year four of permit coverage, if applicable, as per **Part 4.2.5.1.a.ii** of the **MSGP 2021**.

If the results indicate that the monitored pollutant is detected in the storm water discharge or is outside the acceptable range for a given parameter for the Rio Grande, the Landfill facility must continue to monitor for the pollutant(s) annually until no longer detected, after which the facility may discontinue monitoring for that pollutant until monitoring resumes in the fourth year of permit coverage, if applicable, as per **Part 4.2.5.1.a.ii** of the **MSGP 2021**.

Schedule – Fourth Year of Permit Coverage

Annual monitoring of Impaired Waters will resume in the fourth year of permit coverage for another year for a subset of parameters monitored for in the first monitoring year. During the fourth year of permit coverage, the Landfill facility will monitor for all pollutants causing impairment(s) associated with the facility's industrial activity. Monitoring will be conducted once at each discharge point, for all pollutants

presently impairing the water body, and all associated with the industrial activity of the Landfill facility.

If the results indicate the monitored pollutant(s) is not detected in the discharge or is within the acceptable range for a given parameter for the Rio Grande, the Landfill facility may discontinue monitoring for that pollutant for the remainder of the permit coverage.

If the results indicated that the monitored pollutant(s) is detected in the discharge or is outside the acceptable range for a given parameter for the Rio Grande, the Landfill facility must continue to monitor for the pollutant(s) annually until no longer detected, after which the facility may discontinue monitoring for the pollutant for the remainder of the permit coverage.

This Page Intentionally Left Blank

Section 6: Documentation to Support Eligibility Considerations under Other Federal Laws

6.1 Documentation Regarding Endangered Species.

In accordance with the requirements of *MSGP 2021*, an eligibility screening was performed with regards to endangered species. The eligibility screening followed the procedures outlined in Appendix E of the *MSGP 2021*. The Landfill was found to be eligible for coverage under the MSGP with respect to endangered species under **Criterion C1**.

The industrial activities conducted at the Landfill were evaluated and found to be valid under Criterion C1 because there was no changes present in the “action area” as described under permit coverage of the *MSGP 2015*. **Appendix G** of this SWPPP contains a memorandum describing the eligibility screening process and findings.

6.2 Documentation Regarding Historic Properties

In accordance with the requirements of *MSGP 2021*, an eligibility screening was performed with regards to historic properties. The eligibility screening followed the procedures outlined in Appendix F of the *MSGP 2021*. **Appendix H** of this SWPPP contains a memorandum describing the eligibility screening process and findings. The Landfill was found to be eligible for coverage under the MSGP with respect to historic properties under **Criterion A**.

6.3 Documentation Regarding NEPA Review (if applicable)

The Landfill is not subject to any New Source Performance Standards (NSPS) as described in Section 1, Table 1-1 of the *MSGP 2021*; therefore, NEPA process review is not required.


This Page Intentionally Left Blank

Section 7: SWPPP Certification

7.1 Person (s) Responsible for SWPPP Preparation

The SWPPP shall be prepared in accordance with good engineering practices and to industry standards. The SWPPP was developed by a “qualified person” as defined by the MSGP 2021. A “qualified person” is a person knowledgeable in the principles and practices of industrial storm water controls and pollution prevention and possesses the education and ability to assess conditions at the industrial facility that could impact storm water quality, and the education and ability to assess the effectiveness of storm water controls selected and installed to meet the requirements of the permit.

Name David "Sonny" Cooper, P.E. Title Project Manager

Signature  Digitally signed by David Cooper
Date: 2021.05.27 10:44:02 -06'00' Date 5/27/2021

This Page Intentionally Left Blank

7.2 SWPPP Certification

I certify under penalty of law that this document and all attachments were prepared under my direction or supervision in accordance with a system designed to assure that qualified personnel properly gathered and evaluated the information contained therein. Based on my inquiry of the person or persons who manage the system, or those persons directly responsible for gathering the information, the information contained is, to the best of my knowledge and belief, true, accurate, and complete. I am aware that there are significant penalties for submitting false information, including the possibility of fine and imprisonment for knowing violations.

Name Matthew Whelan Title SWMD Director

Signature  Date 5/27/21

This Page Intentionally Left Blank

Section 8: SWPPP Modifications

Date	Section of SWPPP Revised	Authorization of the Modification
		Name: Signature:
		Name: Signature:
		Name: Signature:
		Name: Signature:
		Name: Signature:
		Name: Signature:
		Name: Signature:
		Name: Signature:
		Name: Signature:
		Name: Signature:
		Name: Signature:
		Name: Signature:
		Name: Signature:
		Name: Signature:
		Name: Signature:
		Name: Signature:
		Name: Signature:

This Page Intentionally Left Blank

SWPPP Appendices

Attach the following documentation to the SWPPP:

Appendix A Pollution Prevention Team Members

Appendix B Multi-Sector General Permit 2021

Appendix C Figures

Figure 1 Cerro Colorado Landfill General Location Map

Figure 2 Cerro Colorado Landfill Site, Drainage and Activities Plan

Appendix D Evaluation of Non-Storm Water Discharges

Appendix E Best Management Practices and Spill Response Plan

Appendix F Training Records

Appendix G Endangered and Threatened Species Screening Memorandum

Appendix H Historic Properties Preservation Screening Memorandum

Appendix I Copy of the Notice of Intent, Acknowledgement Letter and Delegation of Authority Letter

Appendix J Documentation of Maintenance to Control Measures

Appendix K Documentation of Corrective Action Taken

Appendix L Sample and Analysis Plans

Appendix M Reports

M1 – Quarterly Routine Facility Inspections

M2 – Quarterly Visual Storm Water Assessment

M3 – EPA Industrial Storm Water Sampling Guidance

M4 – Annual Report Example

M5 – Sampling Data Reports

This Page Intentionally Left Blank

APPENDIX A

POLLUTION PREVENTION TEAM MEMBERS

This Page Intentionally Left Blank

Appendix A

City of Albuquerque – Solid Waste Management Department

Cerro Colorado Landfill

Pollution Prevention Team Members

Department	Facility Name	Contact	Responsibility	Address	City	State	Zip	Phone	Email
Municipal Development	Engineering/Storm Water Design	Shellie Eaton, P.E.	PPT Leader (Primary Contact)	1 Civic Plaza, Room 310	Albuquerque	NM	87103	O: 768-2774	seaton@cabq.gov
Municipal Development	Engineering/Storm Water Design	Kathy Verhage, P.E.	PPT Leader (Secondary Contact)	1 Civic Plaza, Room 310	Albuquerque	NM	87103	O: 768-3654	kverhage@cabq.gov
SWMD	Cerro Colorado Landfill	Jake Daugherty	Environmental Compliance Coordinator	4600 Edith Blvd NE	Albuquerque	NM	87107	O: 761-8324 C: 264-0618	ddaugherty@cabq.gov
SWMD	Cerro Colorado Landfill	Mike Buchanan	Environmental Compliance Coordinator	4600 Edith Blvd NE	Albuquerque	NM	87107	O: 768-3910 C: 250-6880	mbuchanan@cabq.gov

**APPENDIX B
MULTI-SECTOR GENERAL PERMIT 2021**

<https://www.epa.gov/npdes/stormwater-discharges-industrial-activities-epas-2021-msgp>

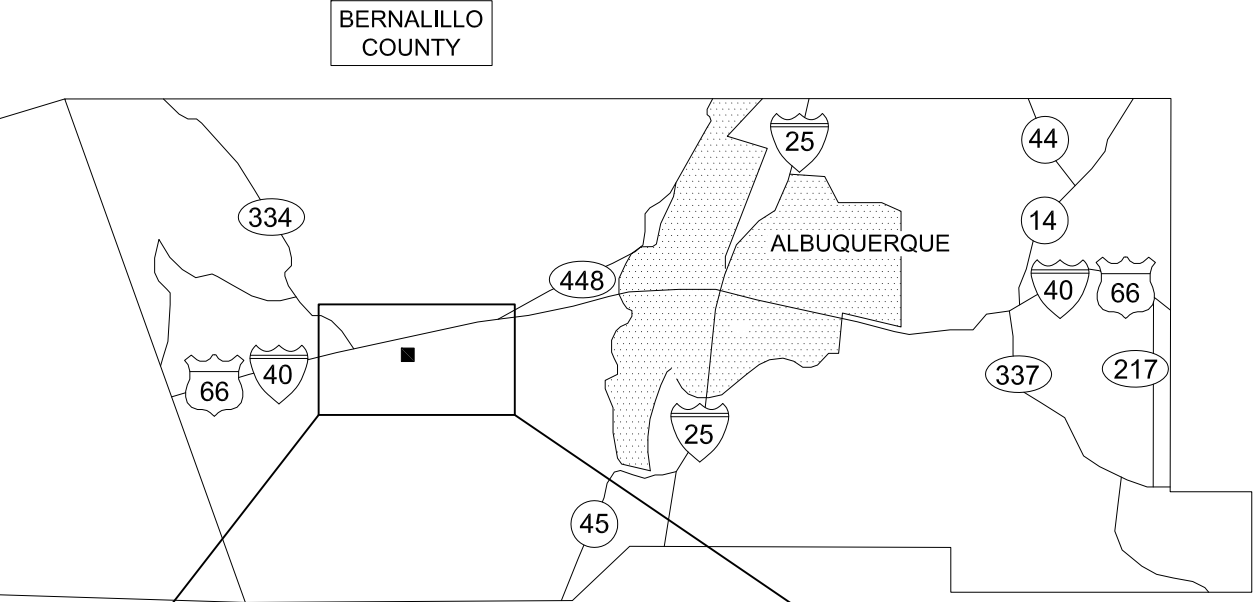
This Page Intentionally Left Blank

APPENDIX C
FIGURES

Figure 1 – Cerro Colorado Landfill General Location Map
Figure 2 – Cerro Colorado Landfill Site, Drainage and Activities Plan

This Page Intentionally Left Blank

W:\Projects\City of Albuquerque\MS4_NPDES 2018 (Contract 8013)\TASK 07 SWMD SWPPP AND ANNUAL REPORTING\8.0 DRAWINGS\DWG\Cerro Colorado\
 ©2012 CDM SMITH ALL RIGHTS RESERVED. THESE DOCUMENTS AND DESIGNS PROVIDED BY PROFESSIONAL SERVICE, INCORPORATED HEREIN, ARE THE PROPERTY OF CDM SMITH
 AND ARE NOT TO BE USED, IN WHOLE OR PART, FOR ANY OTHER PROJECT WITHOUT THE WRITTEN AUTHORIZATION OF CDM SMITH.

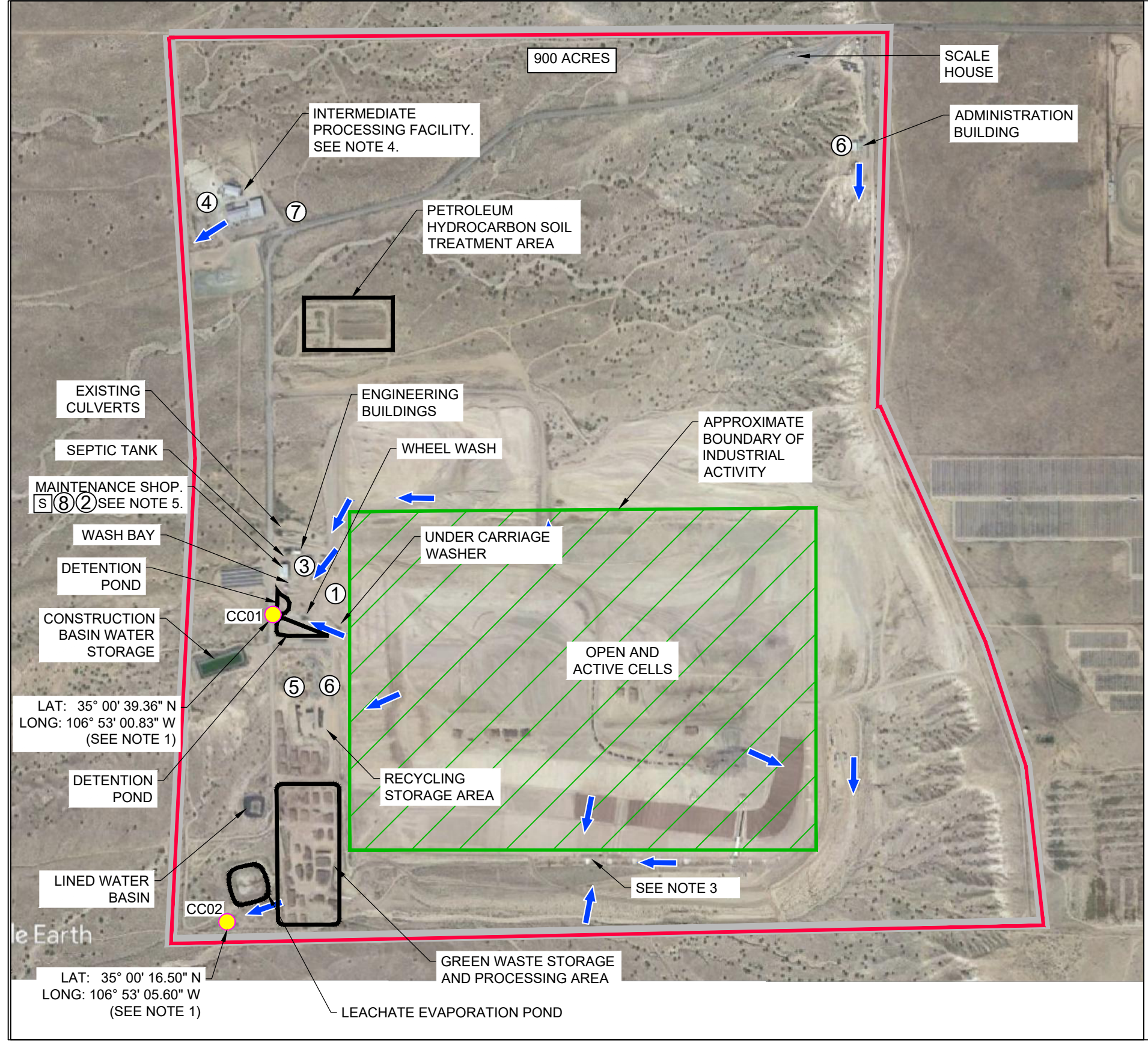


City of Albuquerque
 Storm Water Pollution Prevention Plan (SWPPP)
 Cerro Colorado Landfill (CCLF)

Figure No. 1
 General Location Map

FEBRUARY 2020

D:\SWPPP Updates\DWG\IFrom Task 7\CSTPLCerro 2021.dwg May 24, 2021 - 1:19pm
 © 2012 CDM SMITH ALL RIGHTS RESERVED. REUSE OF DOCUMENTS, THESE DOCUMENTS AND DESIGNS PROVIDED BY PROFESSIONAL SERVICE, INCORPORATED HEREIN, ARE THE PROPERTY OF CDM SMITH AND ARE NOT TO BE USED, IN WHOLE OR PART, FOR ANY OTHER PROJECT WITHOUT THE WRITTEN AUTHORIZATION OF CDM SMITH.



LEGEND

- SURFACE WATER FLOW DIRECTION
- FACILITY BOUNDARY
- CC01 APPROXIMATE OUTFALL LOCATION
- SPILL RESPONSE MATERIALS
- SIZE OF PROPERTY IN ACRES
- OPEN AND ACTIVE CELLS

NOTES:

1. STORMWATER APPEARS TO DISCHARGE FROM THE SOUTH PERIMETER FENCE LINE. LATITUDES (LAT) AND LONGITUDES (LONG) ARE APPROXIMATE.
2. APPROXIMATE AREA OF ACTIVITIES/DISTURBED SOIL: 204.54 ACRES.
3. STORM WATER CONTROLS ARE PRESENT ALONG SOUTHERN OF OPEN AND ACTIVE CELLS.
4. ACTIVE CONSTRUCTION IS BEING CONDUCTED AT INTERMEDIATE PROCESSING FACILITY (IPF) FOR NEW MAINTENANCE SHOP: CONSTRUCTION ACTIVITY IS COVERED UNDER SITE SPECIFIC STORM WASTER POLLUTION PREVENTION PLAN (SWPPP).
5. ADDITIONAL WORK TRUCK WITH 100-GALLON FUEL TANK STORED ON SITE.

MATERIAL HANDLING

- ① USED OIL STORAGE
- ② MAINTENANCE FLUID STORAGE
- ③ FUEL STORAGE
- ④ SALT STORAGE
- ⑤ TEMPORARY TIRE STORAGE
- ⑥ VEHICLE AND EQUIPMENT STORAGE
- ⑦ CRUSHED GLASS STORAGE
- ⑧ METAL FABRICATION ACTIVITIES



City of Albuquerque
 Storm Water Pollution Prevention Plan (SWPPP)
 Cerro Colorado Landfill (CCLF)

Figure No. 2
 Site Plan
 MARCH 2021

APPENDIX D
EVALUATION OF NON-STORM WATER DISCHARGES

This Page Intentionally Left Blank



Memorandum

*To: Kathy Verhage, P.E., Senior Engineer
City of Albuquerque, Storm Drainage Design*

From: Shannon Archuleta

Date: February 18, 2021

*Subject: 2021 Evaluation of Non-Storm Water Discharges at SWMD – Cerro Colorado
Landfill*

Weston Solutions Inc. (Weston), on behalf of the City of Albuquerque (City) Storm Water Management Section, performed a visual assessment at the Solid Waste Management Department Cerro Colorado Landfill (Cerro) for the presence of non-storm water discharges as described in the Multi-Sector General Permit (MSGP). Weston performed the visual assessment at Cerro on February 18, 2021 for the presence of non-storm water discharges and facility updates. Photographs documenting the assessment are provided in **Attachment 1**. No non-storm water discharges were observed during the assessment.

Attachments

Attachment 1 – Photograph Log

APPENDIX E
BEST MANAGEMENT PRACTICES AND SPILL RESPONSE PLAN

This Page Intentionally Left Blank

City of Albuquerque - Solid Waste Management Department

Stormwater Pollution Prevention Plan
Best Management Practices
for the
Cerro Colorado Landfill



Contents:

Solid Waste BMP 1.0 – General Best Management Practices

Solid Waste BMP 2.0 – Reduce Municipal Solid Waste Exposure to Stormwater

Solid Waste BMP 3.0 – Vehicle and Equipment Maintenance

Solid Waste BMP 4.0 – Proper Chemical and Waste Storage including Processing of Non-Municipal Solid Waste

Solid Waste BMP 5.0 – Vehicle and Equipment Storage

Solid Waste BMP 6.0 – Structural Stormwater Controls

Solid Waste BMP 7.0 – Fuel Storage and Delivery

Solid Waste BMP 8.0 – Vehicle and Equipment Cleaning

Prepared by:



Updated by:



This Page Intentionally Left Blank



Solid Waste BMP 1.0

General Best Management Practices

► PURPOSE:

Prevent or reduce the discharge of pollutants to stormwater from all industrial operations with potential to impact stormwater.

► APPROACH TO EXISTING FACILITY ACTIVITIES:

GOOD HOUSEKEEPING

1.01 General

- Maintain exposed areas in a clean and orderly manner.
- Take necessary steps to prevent pollutants from contacting stormwater.

1.02 Clean Exterior Equipment Surfaces

- Keep exterior surfaces of vehicles, equipment and containers clean by eliminating excessive amounts of external oil and grease buildup
- Perform all cleaning activities indoors or under cover when possible
- Use water-based cleaning agents or non-chlorinated solvents to clean equipment, and collect and properly dispose of cleaning fluids.
- Use drum-top absorbent pads to contain small leaks.

1.03 Cleaning Interior Floors and Tipping Floors

- Properly dispose of interior floor wash water, sweepings, and sediments.

1.04 Recycle, Reduce, and Reuse

- Identify opportunities to recycle, reclaim, and/or reuse materials to reduce the volume of materials brought in to the facility and reduce the volume of waste.
- Materials that may be recycled or reused include used oil, grease, antifreeze, brake fluid, solvents, hydraulic fluid, batteries, transmission fluid, washwater, and waste fuel.

1.05 Product Substitution

- Use biodegradable products and substitute materials with less hazardous properties where feasible.

1.06 Limit Material Inventory

- Limit inventory of materials stored on-site to reduce the magnitude of potential spills and waste generation.

MINIMIZE EXPOSURE OF POLLUTANTS TO STORMWATER

1.07 Storm-Resistant Shelters

- Where practicable, industrial materials and activities should be protected by a storm-resistant shelter to prevent exposure.

PREVENTATIVE MAINTENANCE

1.08 Pollution Prevention

- For long term storage (>30 days), remove fluids and salvage batteries (which often drip oil and other fluids).

► TARGETED ACTIVITIES:

- Activities not covered by other BMPs.

► TARGETED POLLUTANTS:

- Fuels, Oils, Grease

► KEY APPROACHES:

- Keep outside areas maintained
- Store materials and equipment inside to the extent practical
- Conduct preventative maintenance
- Conduct regular inspections
- Train employees in stormwater pollution prevention techniques
- Document stormwater pollution prevention activities
- Maintain and Post Spill Response Plans



Solid Waste BMP 1.0

General Best Management Practices

1.09 Design for Pollution Prevention

- Work with design and construction project managers to incorporate stormwater management features into project design.
- Evaluate existing facilities for opportunities to improve functionality and efficiency, and decrease the potential for stormwater pollution.
- Features may include:
 - Appropriate surface grading
 - Containment and/or cover
 - Stormwater quality structures (e.g., oil/water separators, dead-end sumps, first flush diversion basins)
 - Use of concrete paving rather than asphalt
 - Fluid recycling systems
 - Waste repositories
 - Other control measures to eliminate potential material exposure to stormwater

MANAGEMENT OF STORM WATER RUNOFF

1.10 Outdoor Water Supplies

- Limit availability of outdoor water supplies.
- Post signs at outdoor water sources identifying appropriate uses and discouraging uses that would introduce pollutants to the storm drain system/receiving waters.

SPILL PREVENTION AND RESPONSE

1.11 Spill Response Plans

- Post the plan in a visible location within each work area where spills are likely to occur.

1.12 Maintain Spill Response Equipment and Supplies

- Maintain adequate supplies of spill response equipment and materials in accessible locations near areas where spills may be likely to occur, including on appropriate vehicles (maintenance vehicles) that may be likely to respond to or be involved in an incident.

1.13 Spill Containment and Response

- Immediately clean up all spills and leaks.
Report all spills to the Landfill Supervisor.
- Use drip pans to contain leaks and absorbent booms, mats, or other devices to contain liquid materials (washwater, fuel, etc.) and prevent them from entering the storm drain system.
- Develop and implement a Spill Prevention Control and Countermeasure (SPCC) Plan, if required under guidelines set forth in 40 CFR, Section 112.3.



Solid Waste BMP 1.0

General Best Management Practices

1.14 Procedures for Cleaning Up Spills and Leaks

- Use absorbent materials and spill control equipment for temporary and immediate control of spills and leaks of liquid materials.
- Absorbent materials can be used in conjunction with curbing to provide cleanup of small spills within a containment area.
- Collect and remove absorbent materials from area soon after use and dispose of in an appropriate manner.
- Hazardous waste spill response must be consistent with 40 CFR 264 and 265 (RCRA).

1.15 Disposal of Collected Fluids

- Properly dispose of any collected fluids (e.g., spill fluids, or fluids collected in fuel tanks, fueling hydrant sumps, oil/water separators, etc.) according to applicable regulations.
- Never discharge material to a catch basin or storm drain. Always dispose of materials in an approved manner; use an approved treatment facility through a permitted connection.

1.16 Minimizing Exposure

- Where practicable, industrial materials and activities will be protected by a storm resistant shelter to prevent exposure to rain or runoff.
- It is noted that due to the nature of the operations (routine service of large equipment) cover is not always practical.

ROUTINE FACILITY INSPECTIONS

1.17 Activity Inspections

- Perform frequent activity inspections to identify and eliminate non-stormwater discharges.
- Stagger inspection times to cover all work periods.

1.18 Inspections for Facility Upgrades

- Perform inspections during design review and project construction phases to ensure drainage, wastewater, and water supply connections are correct (no cross connections or illicit hookups).

EMPLOYEE/CONTRACTOR TRAINING

1.19 General Employee Training

- Provide the appropriate level of employee training in the following areas:
 - Stormwater pollution prevention education,
 - Spill response and prevention,
 - Right-to-know awareness training, and
 - Hazardous materials management.

1.20 Stormwater Training

- Provide annual stormwater management training as required in the MSGP-2015, Part 2.1.2.8.
- Incorporate required elements in training program and maintain a log of employee attendance.



Solid Waste BMP 1.0

General Best Management Practices

1.21 Contractor Education

- Provide haulers with copies of pertinent BMPs.
- Require hauler adherence to BMP specifications.

1.22 SPCC Training

- Provide adequate implementation training for facilities with a Spill Prevention Control and Countermeasure (SPCC) Plan, if required, developed under guidelines set forth in 40 CFR 112.3.

RECORDKEEPING AND REPORTING

1.23 Comply with Record Keeping and Reporting Requirements of the MSGP

- The record keeping and reporting requirements contained in the MSGP should be followed.

BUILDING AND GROUNDS MAINTENANCE

1.24 Disposal of Landscaping and Grounds Maintenance Waste

- Properly dispose of landscape waste, washwater, sweepings, and sediments.

1.25 Grounds/Landscaping Design Considerations

- Consider the following design characteristics for grounds/landscaping design:
 - Incorporate areas of landscape into project design. (Landscape areas are pervious and will result in less runoff discharge from a site.)
 - Incorporate design considerations such as leaving or planting native vegetation to reduce irrigation, fertilizer, and pesticides needs.
 - Select landscaping plants that require little maintenance and/or pest control.
 - Incorporate storm water detention/retention to reduce peak runoff flows and for water quality control.

1.26 Minimize Pesticide, Herbicide, and Fertilizer Use

- Minimize use of pesticides, herbicides, and fertilizers. Use according to directions. Utilize integrated pest management

1.27 Erosion Control

- Provide landscaped areas where erosion is becoming a problem.

Solid Waste BMP 2.0

Reduce Municipal Solid Waste Exposure to Stormwater



► PURPOSE:

Prevent or reduce the discharge of pollutants to stormwater from transfer of municipal solid waste (MSW) to the landfill working face area. Prevent run-on and runoff from waste management areas.

► APPROACH TO EXISTING FACILITY ACTIVITIES:

GOOD HOUSEKEEPING

2.01 Disposal of Fluids

- Recycle or properly dispose of the following: grease, oils, antifreeze, brake fluid, cleaning solutions, hydraulic fluid, batteries, transmission fluid, and filters.

MINIMIZE EXPOSURE OF POLLUTANTS TO STORMWATER

2.02 Minimize Exposure of Waste at Landfill Open Face

- Minimize the area of exposed open face as much as practicable
- Divert flows around open face using structural control measures such as dikes, berms, swales, or pipe slope drains
- Maintain the integrity and effectiveness of any intermediate or final cover (including repairing the cover as necessary to minimize the effects of settlement, sinking and erosion)
- Regularly inspect erosion and sediment controls

2.03 Minimize Exposure of Waste Tracking

- Clean wheels and exterior of trucks or other equipment as necessary to minimize waste tracking (but contain any wash waters)
- Establish procedures such as rumble stripes and gravel apron to minimize offsite tracking

2.04 Management of Leachate

- Frequently inspect leachate collection system and landfill for leachate leaks
- Properly dispose of leachate over lined portions of the landfill or at the lined evaporation pond

PREVENTATIVE MAINTENANCE

2.05 Maintain Existing Systems

- Maintain landfill cover (daily/intermediate/final)
- Maintain all elements of leachate collection, transport and disposal systems to prevent commingling of leachate with stormwater
- Maintain 2-foot of freeboard in the leachate storage pond

NOTE: See BMP 1.0 for generally applicable measures related to Preventative Maintenance, Training, Runoff Management, and Record Keeping and Reporting.

► TARGETED ACTIVITIES:

- Transfer of Waste

► TARGETED POLLUTANTS:

- MSW leachate

► KEY APPROACHES:

- Minimize exposure of waste
- Collect and properly dispose of all fluids
- Conduct Preventative
- Maintenance

Solid Waste BMP 2.0

Reduce Municipal Solid Waste Exposure to Stormwater



This page intentionally left blank.



Solid Waste BMP 3.0

Vehicle and Equipment Maintenance

► PURPOSE:

Prevent or reduce the discharge of pollutants to storm water from vehicle and equipment maintenance and repair, including vehicle and equipment painting/stripping and floor washdowns. Prevent or reduce the discharge of pollutants to storm drains by inspecting activities and discharge points that may increase the potential for discharge.

► APPROACH TO EXISTING FACILITY ACTIVITIES:

GOOD HOUSEKEEPING

3.01 Parts Cleaning and Degreasing

- Contain the use of solvents and other cleaning compounds to designated interior areas to promote safe handling and to minimize exposure to storm water.
- Use designated washing, steam cleaning, and degreasing areas to clean equipment. Equipment cleaning shall be conducted in accordance with BMP 3.0.

3.02 Contain Drips, Leaks, and Spills

- Use drip pans when performing outdoor maintenance or use with vehicles or equipment awaiting repair.
- Use adsorbent materials at potential problem areas. Adequately collect and remove adsorbent material from the area after use and dispose of in an appropriate manner.

3.03 Maintain Working Areas

- Do not hose down work areas or use concrete cleaning products unless washwater is collected and properly disposed of through a permitted sewer connection.
- As an alternative to floor/pavement washing, use mops, dry sweeping compound, or contract professional cleaning services. Confirm the use of appropriate practices by contract cleaning services
- Store mechanical parts and equipment that yield even small amounts of contaminants (e.g. oil or grease) indoors or under cover and away from storm drains.

3.04 Disposal of Maintenance Fluids

- Recycle or properly dispose of the following: greases, oils, antifreeze, brake fluid, cleaning solutions, hydraulic fluid, batteries, transmission fluid and filters.
- Drain and properly dispose of all fluids and remove batteries from salvage equipment. Fluid disposal shall occur regularly and in accordance with BMP 4.

MINIMIZE EXPOSURE OF POLLUTANTS TO STORMWATER

3.05 Perform Maintenance Activities Indoors

- Where practicable, perform equipment maintenance activities indoors to prevent the exposure of pollutants to stormwater.

► TARGETED

ACTIVITIES:

- Vehicle Maintenance
- Equipment Maintenance

► TARGETED POLLUTANTS:

- Fuels, Oil, Grease
- Solvents
- Soaps, Detergents
- Battery Acid
- Paint

► KEY APPROACHES:

- Conduct maintenance indoors, or in covered area
- Prevent washwater discharges to the storm drain
- Clean catch basins regularly
- Collect and properly dispose of all fluids
- Conduct Preventative Maintenance



Solid Waste BMP 3.0

Vehicle and Equipment Maintenance

SPILL PREVENTION AND RESPONSE

3.06 Preventing Pollutant Exposure When Performing Maintenance Activities

Move activities and associated materials and waste indoors or provide appropriate controls in maintenance areas, such as cover, berms, sumps, oil/water separators or retention basins to protect storm drains.

Perform activities away from storm drains or cover storm drains.

ROUTINE FACILITY INSPECTIONS

3.07 Maintenance Area Inspections

- Perform regular inspections of equipment containing greases, oils, fuel, hydraulic fluid, antifreeze etc.
- Keep the equipment in good working order. Replace worn equipment before leaks develop.
- Notify appropriate personnel if it is noticed that vehicles or equipment require maintenance.
- Perform regular inspections of parts washers, hydraulic lifts, or other maintenance support components.

APPROACH TO FUTURE FACILITIES AND UPGRADES:

DESIGN OF NEW FACILITIES AND EXISTING FACILITY UPGRADES

3.08 Design of New Facilities and Existing Facility Upgrades

- Provide covered maintenance areas when designing new facilities or upgrading existing facilities.
- Utilize indoor areas, lean-to, or portable covers.
- Locate outdoor maintenance areas so minimal quantities of runoff cross the site.
- Include appropriate stormwater quality structures (oil/water separators, sumps, first flush diversion basins, etc.) in the design of outdoor maintenance areas.

NOTE: See BMP 1.0 for generally applicable measures related to Preventative Maintenance, Training, Runoff Management, and Record Keeping and Reporting.

Solid Waste BMP 4.0

Proper Chemical and Waste Storage including Processing of Non-Municipal Solid Waste



► PURPOSE:

Prevent or reduce the discharge of pollutants to stormwater from loading and unloading of material and waste. Prevent or reduce the discharge of pollutants to stormwater from waste handling and disposal by tracking waste generation, storage, and disposal; reducing waste generation and disposal through source reduction, re-use, and recycling; and preventing run-on and runoff from waste management areas.

► APPROACH TO EXISTING FACILITY ACTIVITIES:

GOOD HOUSEKEEPING

4.01 Material and Waste Handling

- Transfer, use and store liquid materials only in paved areas (if possible) to capture leaks, drips or spills.
- Designate central storage locations where materials are contained (i.e., curbing, secondary containment, etc.) and covered (if possible) to prevent contact with stormwater runoff and reduce the risks of accidental spills
- Segregate wastes to improve handling and promote recycling.
- All recyclables are stored in non-biodegradable and leak-proof containers.
- Household hazardous waste is stored under cover with secondary containment and spill kit in close proximity.

4.02 Dispensing Liquids

- Dispensing materials from upright drums equipped with hand pumps is preferred.
- Avoid dispensing from drums positioned horizontally in cradles.
- Always use secondary containment and self-closing spigots if dispensing from horizontally positioned drums.

4.03 Signage for Storage Locations

- Post signs at all storage locations in clearly visible locations noting the materials stored, emergency contacts, and spill cleanup procedures.

4.04 Containers and Container Labeling

- Store all materials sealed in their original containers or containers approved for that use.
- Clearly label all containers with contents to prevent co-mingling of materials, storage of incompatibles, and improper handling, and to promote proper material handling and storage.
- Utilize required labeling procedures for storage of all hazardous wastes.
- Identify and properly dispose of all unlabeled and unknown materials.

► TARGETED ACTIVITIES:

- Fuel Storage
- Chemical Storage
- Equipment Storage

► TARGETED POLLUTANTS:

- Fuel, Oils, Grease
- Solvents
- Hydraulic Fluid
- Soaps, Detergents
- Paints, Stains, and Sealants
- Paper, Plastic, Aluminum, Steel, Tin, Glass and Small Electronics

► KEY APPROACHES:

- Store drums, containers on pallets
- Provide berming or secondary containment
- Store empty drums, containers, tires on pallets
- Drain fluids before storage
- Spill kit in close proximity
- Perform and document periodic inspections

Solid Waste BMP 4.0

Proper Chemical and Waste Storage including Processing of Non-Municipal Solid Waste



4.05 Used Battery Management

- Recycle used batteries no later than 30 days after removal to promote recycling of materials and reduction of waste.
- Store batteries on spill containment and under cover.

4.06 Used Oil Containers and Filters

- Drain and crush oil filters and containers before recycling or disposal.
- Store crushed waste in a leak-proof container.
- Contain drained items in sealed plastic bags prior to disposal.

4.07 Eliminate Bone yards

- Eliminate waste collection piles (bone yards), which tend to conceal and lead to mismanaged waste and materials.

4.08 Sanitary Facilities

- Collect all sanitary waste from portable facilities a minimum of one time per week by approved sanitary services.
- Remove leaking portable toilets from the facility and replace with new portable toilets.

PREVENTATIVE MAINTENANCE

4.09 Maintain Storage Area

- Ensure secondary containment structure is leak tight and is free of cracks, etc.
- Outdoor storage areas should be covered, if possible.
- When selecting storage sites, avoid excessive slope, locations near storm drain inlets, and locations near public access areas.
- Remove accumulated waste in a timely manner.
- Spill response plans shall be posted in waste storage areas.
- Stocked spill response kits shall be available in waste storage areas.

SPILL PREVENTION AND RESPONSE

4.10 Preventing Pollutant Exposure During Material Transfer

- Position vehicles used for material transfer such that activities are protected from rainfall and that possible spills can be contained.
- Provide hand pumps, containment devices, and other transfer devices to facilitate material transfer.

ROUTINE FACILITY INSPECTIONS

4.11 Monthly Inspections

- All waste storage, disposal, and processing areas shall be inspected as part of the routine facility inspections.
- Inspect secondary containment regularly and remove accumulated debris and fluids regularly.

4.12 Waste Transfer Area Inspections

- Inspect loading/unloading areas and material use areas for repair and patching.

Solid Waste BMP 4.0

Proper Chemical and Waste Storage including Processing of Non-Municipal Solid Waste



4.13 Portable Toilet Inspections

- Perform weekly visual inspections of portable toilet holding tanks for evidence of leaking.

4.14 Material and Waste Storage Area Inspection (Containers and Tanks)

- Periodically inspect storage areas (containers and tanks):
 - Check containers for external corrosion and structural failure.
 - Check for spills and overfills due to operator failure.
 - Check for failure of piping system (pipes, pumps, flanges, couplings, hoses, and valves).
 - Check for leaks or spills during pumping of liquids or gases.
 - Visually inspect new tanks or containers for loose fittings, poor welds, and improper or poorly fitted gaskets.
 - Inspect tank foundations and storage area coatings.

EMPLOYEE/CONTRACTOR TRAINING

4.13 Waste Management Training

- Train employees on the proper disposal procedures for operations-derived wastes.

MANAGEMENT OF STORM WATER RUNOFF

4.14 Protect Storage Areas from Run-On and Runoff

- Protect all significant materials from rainfall, run-on, runoff, and wind dispersal.
- Options include:
 - Store material indoors or in a fully enclosed area.
 - Permanently cover an outdoor storage area with a roof, overhang, or awning.
 - Use temporary covering of polyethylene, polypropylene, or hypalon.
 - Use control measures such as berms and secondary containment.
 - Reduce the amount of material stored outdoors.

RECORDKEEPING AND REPORTING

4.15 Track Waste Generation

- Characterize waste streams and maintain accurate information on waste streams using:
 - Manifests,
 - Bills of lading,
 - Biennial reports,
 - Permits,
 - Environmental audits,
 - SARA Title III reports,
 - NPDES discharge monitoring reports,
 - Emission reports,
 - Data on chemical spills,
 - Inventory reports,
 - Emissions data, and
 - Safety Data Sheets (SDS).

NOTE: See BMP 1.0 for generally applicable measures related to Preventative Maintenance, Training, Runoff Management, and Record Keeping and Reporting.

Solid Waste BMP 4.0

Proper Chemical and Waste Storage including Processing of Non-Municipal Solid Waste



This page intentionally left blank.



Solid Waste BMP 5.0

Vehicle and Equipment Storage

► PURPOSE:

Prevent or reduce the discharge of pollutants to storm water from outdoor storage areas (i.e., fuels, chemicals, bagged material on pallets, soils or asphalt material bulk storage, etc.).

► APPROACH TO EXISTING FACILITY ACTIVITIES:

GOOD HOUSEKEEPING

5.01 Vehicles and Equipment Storage

- Use drip pans or specially-designed absorbent pads to contain releases. Repair leaks in an expeditious manner.
- Store vehicles and equipment in an area established to contain any incidental leaks and under cover, if possible.
- For long term storage (>30 days), remove fluids and salvage batteries (which often drip oil and other fluids).
- Clean oil, grease or chemical residue off exterior surfaces prior to long term storage.
- Store vehicles and equipment away from curbs, gutters and storm drains.

5.02 Temporary Parking of Roll-Off Trucks and Transfer Trailers

- Designate areas for parking roll-off trucks and transfer trailers where spills and leaks can be contained and cleaned.
- Use covered loading and unloading areas for transfer of potential pollutants (especially liquid materials), such as building overhangs, to reduce exposure of materials, vehicles, and equipment to storm water.

► APPROACH TO FUTURE FACILITIES AND UPGRADES:

DESIGN OF NEW FACILITIES AND EXISTING FACILITY UPGRADES

5.03 Design of New Facilities and Existing Facility Upgrades

- Require the use of appropriate water quality control structures for fuel and chemical storage areas such as detention/retention basins and sumps.
- Develop appropriate minimum performance standards for these water quality control structures and implement a reporting program to monitor the performance and maintenance of these structures.
- Chemical, fuel, and oil dispensing areas should be covered, if possible.
- Develop standard guidelines for the management of storm water which collects in secondary containment areas.

NOTE: See BMP 1.0 for generally applicable measures related to Preventative Maintenance, Training, Runoff Management, and Record Keeping and Reporting.

► TARGETED ACTIVITIES:

- Fuel, Chemical, Equipment Storage

► TARGETED POLLUTANTS:

- Fuel, Oils, Grease
- Solvents
- Hydraulic Fluid
- Soaps, Detergents

► KEY APPROACHES:

- Store materials indoors or under cover
- Store drums, containers on pallets
- Provide berming or secondary containment
- Drain fluids before storage
- Perform and document periodic inspections
- Designate storage areas away from storm drains

Solid Waste BMP 5.0

Vehicle and Equipment Storage



This page intentionally left blank.



Solid Waste BMP 6.0

Structural Stormwater Controls

► PURPOSE:

Select, implement, and maintain structural stormwater controls to manage the volume and/or quality of stormwater leaving the property. Stormwater volume controls should be installed to manage stormwater volume by delaying, diverting, or reducing the amount of stormwater runoff from the site. Stormwater quality controls should be installed to prevent pollutants from contacting stormwater or remove pollutants from stormwater.

► EXISTING STORM WATER CONTROLS:

GOOD HOUSEKEEPING

6.01 Property Maintenance

- Keep all waste contained to prevent fluids and/or debris from entering stormwater detention basins and other stormwater control structures.
- Prevent non-allowable stormwater discharges from occurring through proper training and implementation of physical control structures.
- Keep perimeter fencing flush with ground level to prevent erosion.
Repair areas with significant erosion as necessary to prevent sediment accumulation.

PREVENTATIVE MAINTENANCE

6.02 Routine Maintenance for Stormwater Control Devices and Outfalls

- Perform regular cleaning of storm water control structures to ensure they are free and clear of debris and garbage.
- Remove accumulated sediment from control structures to prevent clogging of inlets and outlets. Accumulated sediment should be disposed of properly as pollutants are often attached to sediment particles.
- Clean storm drain covers and grates to remove accumulated debris. Check drain covers/grates for structural integrity.
- Replace adsorbent material within storm drain inserts, straw rolls, adsorbent booms, or other disposable media on a regular frequency to prevent accumulated storm water pollutants from being released.
- Maintain vegetation within drainage swales, ponds, and other structures.
Regularly patch or repair storm water control devices (i.e., berms, etc.) to keep them in working order.

6.03 Maintain Catch Basins

- Regularly clean any catch basins which receive runoff from a maintenance area, especially after larger storms.
- Install and maintain catch basin filter inserts that assist in the removal of oil and grease, sediments and floatables.

► TARGETED ACTIVITIES:

- Containing Pollutants Onsite

► TARGETED POLLUTANTS:

- MSW Leachate
- Household Hazardous Waste
- Recyclable Materials
- Sediment
- Nutrients & Bacteria
- Trash
- Oil and Grease

► KEY APPROACHES:

- Maintain adequate retention
- Perform and document periodic inspections
- Properly dispose of all potential pollutants



Solid Waste BMP 6.0

Structural Stormwater Controls

6.04 Maintain Detention Basins

- Remove waste and or soil accumulations as needed.
- Repair areas of significant erosion as necessary to prevent sediment accumulation.

6.05 Install Oil/Water Separators

- Either collect storm water in areas exposed to pollutants or install an appropriately-sized oil/water separator (regulatory agency approval maybe required).
- Oil/water separators are typically used in areas where the concentrations of petroleum hydrocarbons, floatables, or sediment maybe abnormally high and source control techniques are not very effective.
- There are two types of oil/water separators:
 - American Petroleum Institute (API) separator and
 - Coalescing plate separator (CPS).
- Design, sizing, and placement of oil/water separators is dependent on several factors including: tributary area, type of activity, pollutant type and concentration, and water temperature. Separators should be selected, sized and designed by a qualified engineer.

6.06 Maintain Sumps and Oil/Water Separators

- Regularly clean and maintain sump and oil/water separators. Characterize and properly dispose of cleaning waste. Replace oil absorbent pads as needed and always prior to the rainy season(s).
- Keep effluent shutoff valve closed during cleaning operations. Follow maintenance schedule and procedures for these activities.

6.07 Label Storm Drains

- Label storm drain inlets that they are to receive no wastes.

SPILL PREVENTION AND RESPONSE

6.08 Protect Structural Controls from Spills

- Develop spill response plans to protect storm drains, storm water conveyance structures, and other structural controls from coming into contact with storm water pollutants.
- Provide secondary containment, curbing, berms, or other physical means of separating chemicals and other potential storm water pollutants from storm water drainage and collection devices.

ROUTINE FACILITY INSPECTIONS

6.09 Storm Drain Inlet Inspections

- Perform monthly visual inspections of discharge points into the storm drain system.
- Identify any non-storm water discharges, sediment, debris, or other potential contaminants that may be entering the storm drain system.
- Perform inspections of storm water control structures on a monthly basis at minimum and after precipitation events.



Solid Waste BMP 6.0

Structural Stormwater Controls

- Inspections should cover:
 - Overall condition of the structure
 - Accumulation of sediment, vegetation, debris, and garbage at structure inlets, outlets, and within drainage ways
 - Integrity of the structure including damaged concrete or riprap
 - Evaluate erosion at and surrounding the control structure

6.10 Sump and Oil/Water Separator Inspection

- Regularly inspect sumps and oil/water separators to identify when preventative maintenance is needed.

► SELECTION OF NEW STORM WATER CONTROLS:

STORM WATER VOLUME CONTROLS

6.11 Storm Water Volume Controls

- Determine volume of site storm water runoff or runoff using the appropriate hydraulic analysis. Review potential storm water controls to ascertain whether the hydraulic conveyance threshold has been exceeded based on the quantitative results of the hydraulic analysis.
- Perform site assessment for the potential to incorporate low impact development strategies that will be effective in retaining storm water on site. Preference should be given to controls which retain storm water runoff and reduce the volume of storm water discharge to the downstream system.
- Select and evaluate the appropriate infiltration, harvest and use, or bioretention storm water controls:
 - Infiltration storm water controls: Infiltration trench, infiltration basin, bioretention basin with no underdrain, drywell, permeable pavement, and underground infiltration.
 - Harvest and use storm water controls: Cisterns and underground detention
 - Biotreatment storm water controls: Bioretention with underdrain, vegetated swale, vegetated filter strip, dry extended detention basin, wet detention basin, constructed wetland, and proprietary biotreatment.
- If possible use a treatment train of storm water controls to reduce uncertainty of effectiveness. Treatment train refers to the application of a series of storm water controls to improve effectiveness of the system.
- Install and locate storm water controls on site where most effective treatment is achieved.

STORM WATER QUALITY CONTROLS

6.12 Storm Water Quality Controls

- Select and evaluate the appropriate storm water control or combination of controls (treatment train) to improve storm water quality.
- Conduct a qualitative evaluation of site activities and potential pollutants generated on-site. In addition identify any pollutants causing impairment to receiving bodies of water that site storm water discharges to. Select storm water controls to minimize and reduce identified pollutants.
- Review removal efficiency of selected storm water control at one of the following URLs.
 - <http://www.bmpdatabase.org/>
 - <http://cfpub1.epa.gov/npdes/stormwater/menuofbmps/>
 - Install and locate storm water controls on site where most effective treatment is achieved.

Solid Waste BMP 6.0

Structural Stormwater Controls



NOTE: See BMP 1.0 for generally applicable measures related to Preventative Maintenance, Training, Runoff Management, and Record Keeping and Reporting.



Solid Waste BMP 7.0

Fuel Storage and Delivery

► PURPOSE:

Prevent fuel spills and leaks, and reduce their impacts to stormwater. Prevent or reduce the discharge of pollutants to stormwater during fueling operations.

► APPROACH TO EXISTING FACILITY ACTIVITIES:

GOOD HOUSEKEEPING

7.01 Equipment Fueling Station Signage

- Fuel pumps intended for equipment use must be posted with prominent signs stating "No Topping Off" to prevent overflow.

PREVENTATIVE MAINTENANCE

7.02 Install Fuel Tank Monitoring and Release Prevention Systems

- Provide appropriate monitoring for tanks containing fuel (i.e., level indicators and gauges, overfill protection with alarms, interstitial leak detection for double-walled tanks, and routine inspection/lockout for drainage valves for containment areas).
- Fuel dispensing equipment should be equipped with "breakaway" hose connections that will provide emergency shut-down of flow should the fueling connection be broken through movement.
- Automatic shut-off mechanisms should be in place on fuel tankers. These valves should remain in the closed position unless manually opened during fueling.

SPILL PREVENTION AND RESPONSE

7.03 Preventing Pollutant Exposure When Fueling

- Avoid mobile fueling of equipment.
- Fuel equipment in designated areas, covered if possible.
Maintain spill kits at fueling locations.
- Provide containment for fueling areas to capture the accidental release of pollutants in the event of a spill.
- Cover nearby storm drains and outlets to surface drains with spill control mats or block off with absorbent booms to prevent accidental release of pollutants in the event of a spill.

ROUTINE FACILITY INSPECTIONS

7.04 Fuel Storage and Handling Inspections

- Regularly inspect fueling areas and storage tanks. (Underground fuel storage tanks should be tested as required by federal and state laws.)

7.05 Fuel Spill Response Training

- Train employees performing fueling activities on the appropriate response procedures for fuel spills.

► TARGETED ACTIVITIES:

- Equipment Fueling
- Fuel Storage

► TARGETED POLLUTANTS:

- Fuel

► KEY APPROACHES:

- Provide cover and berming or secondary containment for fueling areas
- Use absorbent materials and/or vacuum equipment for spills
- Perform and document periodic inspections
- Install proper equipment for fuel dispensing and tank monitoring to prevent spills, leaks, and overflows
- Post "No Topping Off" signs



Solid Waste BMP 7.0 Fuel Storage and Delivery

► APPROACH TO FUTURE FACILITIES AND UPGRADES:

DESIGN OF NEW FACILITIES AND EXISTING FACILITY UPGRADES

7.06 Design of New Facilities and Existing Facility Upgrades

- Design fueling areas to prevent the run-on of stormwater and the runoff of spills by employing the following approaches:
 - Cover the fueling area if possible.
 - Use a perimeter drain or slope the fueling area to a dead-end sump or oil/water separator.
 - Pave the fueling area with concrete rather than asphalt.
- If stormwater runoff from fueling areas is not collected, install an appropriately-sized oil/water separator. Regulatory agency approvals are required.
- Install and maintain vapor recovery systems where required and/or appropriate.
- New facilities shall be designed with leak detection, spill containment, and overfill protection in accordance with all federal regulations.
- Design facilities to include secondary containment where required and/or appropriate.

NOTE: See BMP 1.0 for generally applicable measures related to Preventative Maintenance, Training, Runoff Management, and Record Keeping and Reporting.



Solid Waste BMP 8.0

Vehicle and Equipment Cleaning

► PURPOSE:

Prevent or reduce the discharge of pollutants to storm water from vehicle and equipment washing and equipment degreasing.

► APPROACH TO EXISTING FACILITY ACTIVITIES:

GOOD HOUSEKEEPING

8.01 Washing Vehicles and Equipment

- Use off-site commercial washing or "dry" washing and surface preparation techniques when possible.
- Remove all materials (i.e., drippings and residue) using vacuum methods and dispose of properly.
- Use biodegradable phosphate-free detergents.
- Follow an approved wash plan or use designated wash areas that are covered and/or bermed to prevent contamination of storm water by contact with wastes.

PREVENTATIVE MAINTENANCE

8.02 Outdoor Wash Area Requirements

- Outdoor washing operations should have the following design characteristics:
 - Covered and paved and bermed with Portland cement concrete.
 - Sloped to facilitate washwater collection.
 - Water is collected or discharged to the sanitary sewer.
 - Discharge piping serving uncovered wash areas should have a positive shut-off control valve.
 - Wash areas should be clearly identified with signage.
 - Equipped with an oil/water separator designed to operate under storm water runoff conditions.

ROUTINE FACILITY INSPECTIONS

8.03 Wash Area Inspections

- Inspect wash areas for cracks or breaches to berms or concrete surfaces and repair.

MANAGEMENT OF STORM WATER RUNOFF

8.04 Use Designated Wash Areas

- Use designated areas for washing, steam cleaning, and degreasing.

► TARGETED

ACTIVITIES:

- Vehicle Washing
- Equipment Washing
- Equipment Degreasing

► TARGETED POLLUTANTS:

- Fuels, Oil, Grease
- Solvents
- Vehicle Fluids
- Soaps, Detergents

► KEY APPROACHES:

- Use designated area
- Use dry washing techniques
- Recycle washwater or discharge appropriately
- Cover catch basins
- Provide training



Solid Waste BMP 8.0

Vehicle and Equipment Cleaning

► APPROACH TO FUTURE FACILITIES AND UPGRADES:

DESIGN OF NEW FACILITIES AND EXISTING FACILITY UPGRADES

8.05 Design of New Facilities and Existing Facility Upgrades

- Consider off-site commercial washing where feasible. Using appropriate offsite facilities will decrease the waste generated on-site.
- Consider incorporating a washwater recycling system into the project design.
- Outdoor washing operations should have the following design characteristics:
 - Paved with Portland cement concrete.
 - Bermed and/or covered (if feasible) to prevent contact with storm water.
 - Sloped to facilitate washwater collection.
 - Washwater should be collected in a dead-end sump for removal or discharged to the sanitary sewer through a permitted connection.
 - Discharge piping serving uncovered wash areas should have a positive shut-off control valve that allows switching between the storm drain and the sanitary sewer.
 - Clearly designated.
 - Equipped with an oil/water separator designed to operate under storm water runoff conditions (treat storm water).

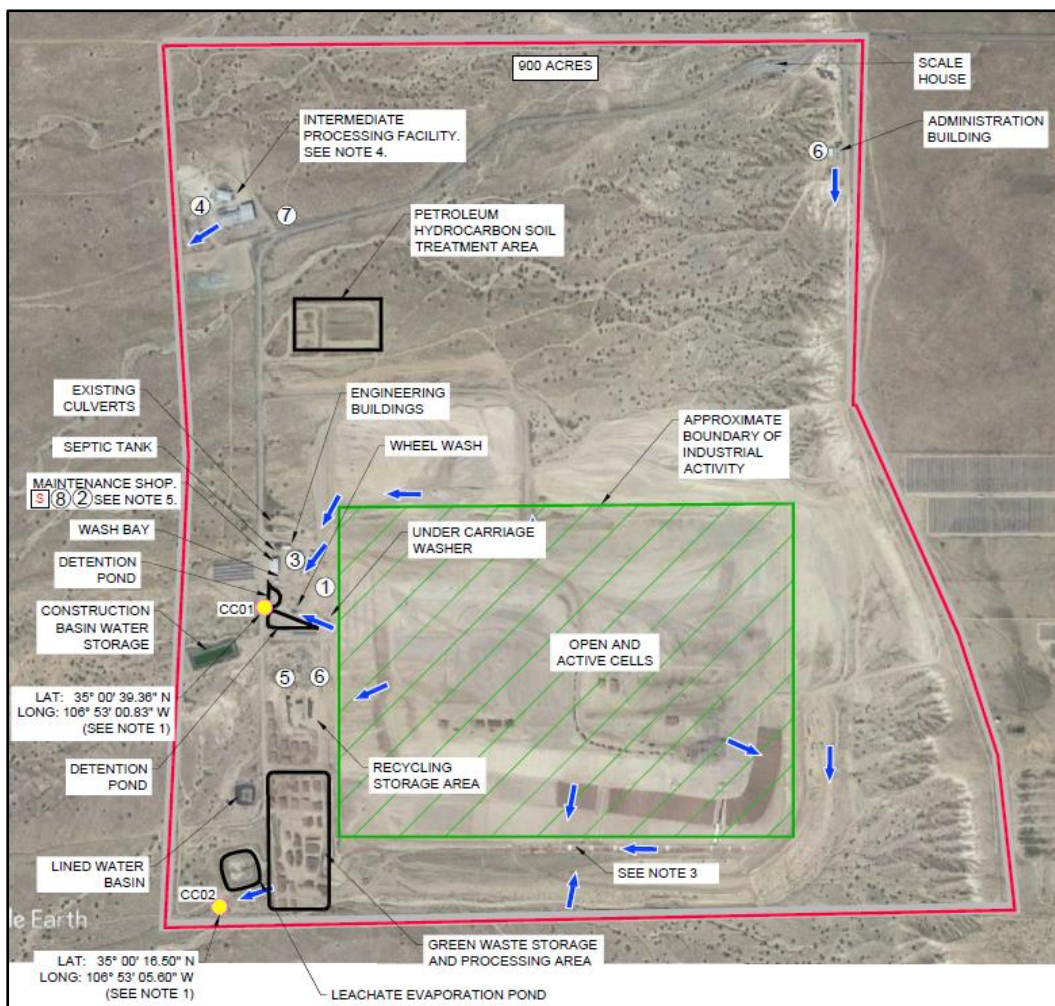
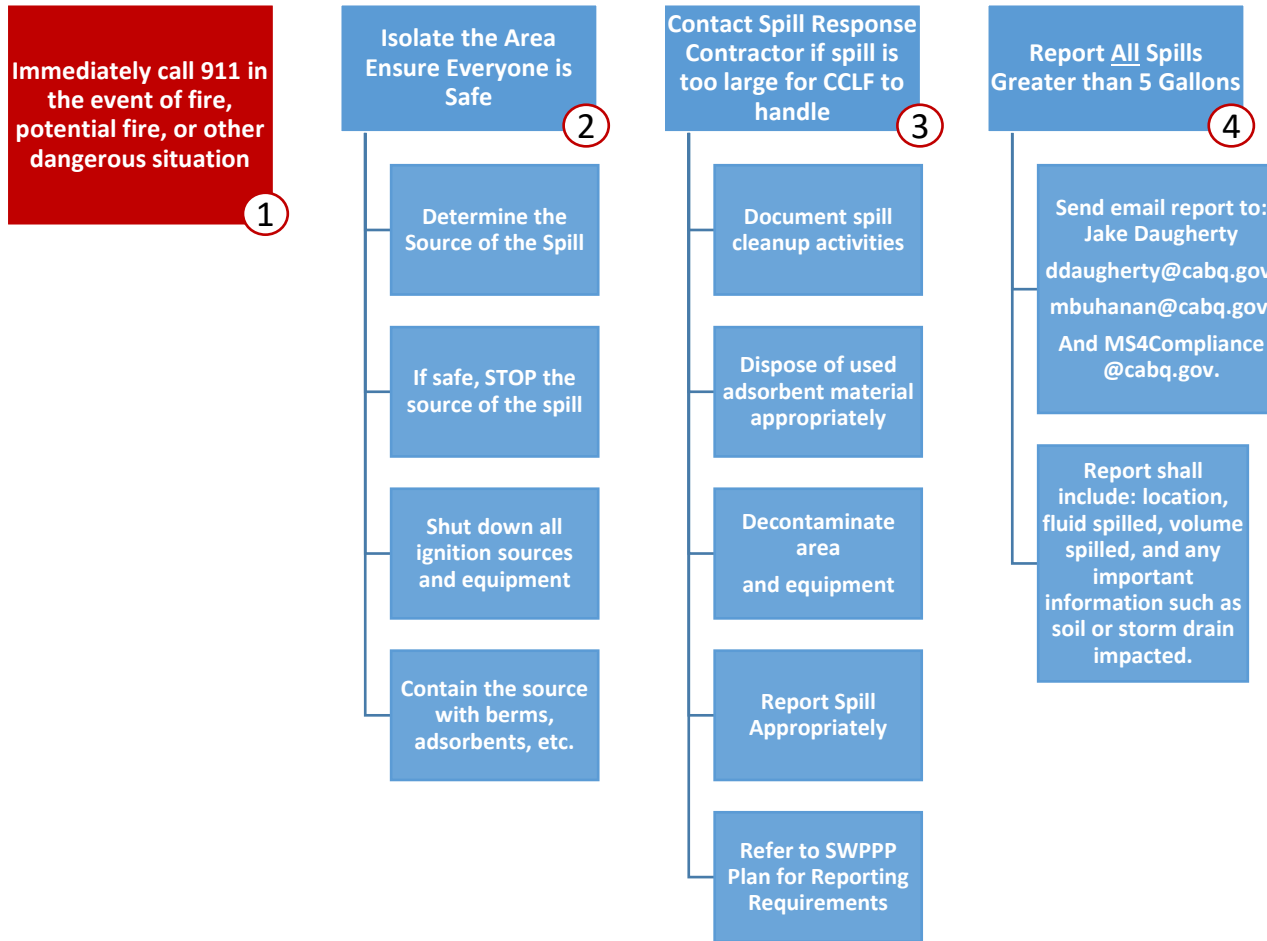
NOTE: See BMP 1.0 for generally applicable measures related to Preventative Maintenance, Training, Runoff Management, and Record Keeping and Reporting.



Spill Response Plan

for the Cerro Colorado Landfill

Primary Facility Emergency Contact	Jake Daugherty	505-264-0618
Secondary Emergency Contact	Michael Buchanan	505-250-6880
Fire/Ambulance/Police	Emergency Non-Emergency	911 505-242-2677
Hospital	Presbyterian	505-841-1234



LEGEND

- SURFACE WATER FLOW DIRECTION
- FACILITY BOUNDARY
- CC01 APPROXIMATE OUTFALL LOCATION
- SPILL RESPONSE MATERIALS
- SIZE OF PROPERTY IN ACRES
- OPEN AND ACTIVE CELLS

NOTES:

- STORMWATER APPEARS TO DISCHARGE FROM THE SOUTH PERIMETER FENCE LINE. LATITUDES (LAT) AND LONGITUDES (LONG) ARE APPROXIMATE.
- APPROXIMATE AREA OF ACTIVITIES/DISTURBED SOIL: 204.54 ACRES.
- STORM WATER CONTROLS ARE PRESENT ALONG SOUTHERN OF OPEN AND ACTIVE CELLS.
- ACTIVE CONSTRUCTION IS BEING CONDUCTED AT INTERMEDIATE PROCESSING FACILITY (IPF) FOR NEW MAINTENANCE SHOP: CONSTRUCTION ACTIVITY IS COVERED UNDER SITE SPECIFIC STORM WASTER POLLUTION PREVENTION PLAN (SWPPP).
- ADDITIONAL WORK TRUCK WITH 100-GALLON FUEL TANK STORED ON SITE.

MATERIAL HANDLING

- ① USED OIL STORAGE
- ② MAINTENANCE FLUID STORAGE
- ③ FUEL STORAGE
- ④ SALT STORAGE
- ⑤ TEMPORARY TIRE STORAGE
- ⑥ VEHICLE AND EQUIPMENT STORAGE
- ⑦ CRUSHED GLASS STORAGE
- ⑧ METAL FABRICATION ACTIVITIES

UPDATED BY:



MAY 2021

**APPENDIX F
TRAINING RECORDS**

This Page Intentionally Left Blank

APPENDIX G
ENDANGERED AND THREANED SPECIES SCREENING MEMORANDUM

This Page Intentionally Left Blank



Weston Solutions, Inc.
3840 Commons Ave. NE
Albuquerque, NM 87109
(505) 837-6520
WestonSolutions.com



May 6, 2021

To: Jake Daugherty and Michael Buchanan, Environmental Compliance Coordinators
City of Albuquerque (COA) Solid Waste Management Department (SWMD)

Re: SWMD here in the COA Cerro Colorado Landfill Documentation of Eligibility with respect to Endangered Species for Coverage under the Multi-Sector General Permit (MSGP 2021) for Stormwater Discharges Associated with Industrial Activities

Dear Jake and Michael,

This eligibility determination is in support of the COA SWMD Notices of Intent (NOI) for coverage of the Cerro Colorado Landfill (Landfill) under the MSGP 2021 for Stormwater Discharges Associated with Industrial activity. As part of the Stormwater Pollution Prevention Plan (SWPPP) development for the Landfill, a review of the threatened and endangered species was performed with consideration to coverage previously held under the MSGP 2015. The purpose of this review is to verify if there are any species that have been placed on the U.S. Fish and Wildlife Service's (FWS) threatened or endangered species list for the Action Area.

Using the methodology outlined in Appendix E of MSGP 2021, the Landfill has been determined eligible for coverage under **Criterion C1** related to endangered species protection. The facility was eligible for Criterion C under coverage of the MSGP 2015, and has no change to the species listed, critical habitat or the facility's action area. Supporting documentation in relation to the endangered species data collected and the assessment of the potential effects of the Landfill discharges referenced for coverage under the MSGP 2015 follow this letter.

It is essential that the Environmental Compliance Coordinators be up to date on the threatened and endangered species in the event that a discharge from the facility occurs that may affect these species. This information should be conveyed to all Landfill staff. Determination steps taken are described below:

Step 1: Determine if Eligibility Requirements of Criterion B, D or E can be met.

The listed Eligibility Requirements for B, D or E do not apply to the Landfill. Their activities are not covered under the eligibility certification of another operator for the action area (Criterion B). The Landfill is not eligible under Criterion D as the facility has not previously completed an Endangered Species Act (ESA) section 7 consultation. Additionally, the facility does not have a previously issued ESA section 10 permit (Criterion E).

Step 2: Determine the Extent of the Action Area

With the consultation of the MSGP 2015's supporting documentation and the guidance established in Appendix E of the MSGP 2021, it was determined that the Action Area for the Landfill has not changed from the previous designation under coverage of the MSGP 2015.

Step 3: Determine if Listed Threatened and/or Endangered Species and Critical Habitats are Present in the Action Area

Through the consultation of the FWS online mapping tool, *Information, Planning and Consultation System IPaC*) (<https://ecos.fws.gov/ipac/>), it was confirmed that the listed threatened and endangered species and critical habitats present within the Landfill Action Area has not changed since it's previous designation within the coverage of the MSGP 2015. A full reference of the consultation from FWS conducted for the Action Area is attached.



Jake Daugherty and Michael Buchanan
COA SWMD

- 2 -

May 6, 2021

Step 4: Determine if Landfill's Discharge or Discharge-Related Activities are likely to Adversely Affect the Listed Threatened and/or Endangered Species or Designated Critical Habitat and Any Measures That Must be Implemented to Avoid Adverse Effects

The Landfill's industrial activity is consistent with the criterion determination under the coverage of the MSGP 2015, and thus, it was determined that direct impact to habitats and species are unlikely for the identified threatened and endangered species and designated critical habitats. Refer to the IPaC consultation supporting documentation to confirm that the information used for coverage in the MSGP 2015 are still current.

Very truly yours,

A handwritten signature in black ink, appearing to read "Shannon Archuleta".

Shannon Archuleta
Environmental Scientist
Weston Solutions, Inc.

Attachments

cc: Criterion C Designation Form and Information from MSGP 2015 for Stormwater Discharge Associated with Industrial Activities

IPaC Consultation and Species List for the Landfill, May 6, 2021.



United States Department of the Interior



FISH AND WILDLIFE SERVICE
New Mexico Ecological Services Field Office
2105 OSUNA ROAD NE
ALBUQUERQUE, NM 87113
PHONE: (505)346-2525 FAX: (505)346-2542
URL: www.fws.gov/southwest/es/NewMexico/;
www.fws.gov/southwest/es/ES_Lists_Main2.html

Consultation Code: 02ENNM00-2016-SLI-0532
Event Code: 02ENNM00-2016-E-00559
Project Name: Cerro Colorado Landfill SWPPP

May 11, 2016

Subject: List of threatened and endangered species that may occur in your proposed project location, and/or may be affected by your proposed project

To Whom It May Concern:

Thank you for your recent request for information on federally listed species and important wildlife habitats that may occur in your project area. The U.S. Fish and Wildlife Service (Service) has responsibility for certain species of New Mexico wildlife under the Endangered Species Act (ESA) of 1973 as amended (16 USC 1531 et seq.), the Migratory Bird Treaty Act (MBTA) as amended (16 USC 701-715), and the Bald and Golden Eagle Protection Act (BGEPA) as amended (16 USC 668-668c). We are providing the following guidance to assist you in determining which federally imperiled species may or may not occur within your project area and to recommend some conservation measures that can be included in your project design.

FEDERALLY-LISTED SPECIES AND DESIGNATED CRITICAL HABITAT

Attached is a list of endangered, threatened, and proposed species that may occur in your project area. Your project area may not necessarily include all or any of these species. Under the ESA, it is the responsibility of the Federal action agency or its designated representative to determine if a proposed action "may affect" endangered, threatened, or proposed species, or designated critical habitat, and if so, to consult with the Service further. Similarly, it is the responsibility of the Federal action agency or project proponent, not the Service, to make "no effect" determinations. If you determine that your proposed action will have "no effect" on threatened or endangered species or their respective critical habitat, you do not need to seek concurrence with the Service. Nevertheless, it is a violation of Federal law to harm or harass any federally-listed threatened or endangered fish or wildlife species without the appropriate permit.

If you determine that your proposed action may affect federally-listed species, consultation with the Service will be necessary. Through the consultation process, we will analyze information

contained in a biological assessment that you provide. If your proposed action is associated with Federal funding or permitting, consultation will occur with the Federal agency under section 7(a)(2) of the ESA. Otherwise, an incidental take permit pursuant to section 10(a)(1)(B) of the ESA (also known as a habitat conservation plan) is necessary to harm or harass federally listed threatened or endangered fish or wildlife species. In either case, there is no mechanism for authorizing incidental take "after-the-fact." For more information regarding formal consultation and HCPs, please see the Service's Consultation Handbook and Habitat Conservation Plans at www.fws.gov/endangered/esa-library/index.html#consultations.

The scope of federally listed species compliance not only includes direct effects, but also any interrelated or interdependent project activities (e.g., equipment staging areas, offsite borrow material areas, or utility relocations) and any indirect or cumulative effects that may occur in the action area. The action area includes all areas to be affected, not merely the immediate area involved in the action. Large projects may have effects outside the immediate area to species not listed here that should be addressed. If your action area has suitable habitat for any of the attached species, we recommend that species-specific surveys be conducted during the flowering season for plants and at the appropriate time for wildlife to evaluate any possible project-related impacts.

Candidate Species and Other Sensitive Species

A list of candidate and other sensitive species in your area is also attached. Candidate species and other sensitive species are species that have no legal protection under the ESA, although we recommend that candidate and other sensitive species be included in your surveys and considered for planning purposes. The Service monitors the status of these species. If significant declines occur, these species could potentially be listed. Therefore, actions that may contribute to their decline should be avoided.

Lists of sensitive species including State-listed endangered and threatened species are compiled by New Mexico state agencies. These lists, along with species information, can be found at the following websites:

Biota Information System of New Mexico (BISON-M): www.bison-m.org

New Mexico State Forestry. The New Mexico Endangered Plant Program: www.emnrd.state.nm.us/SFD/ForestMgt/Endangered.html

New Mexico Rare Plant Technical Council, New Mexico Rare Plants: nmrareplants.unm.edu

Natural Heritage New Mexico, online species database: nhnm.unm.edu

WETLANDS AND FLOODPLAINS

Under Executive Orders 11988 and 11990, Federal agencies are required to minimize the destruction, loss, or degradation of wetlands and floodplains, and preserve and enhance their natural and beneficial values. These habitats should be conserved through avoidance, or mitigated to ensure that there would be no net loss of wetlands function and value.

We encourage you to use the National Wetland Inventory (NWI) maps in conjunction with ground-truthing to identify wetlands occurring in your project area. The Service's NWI program website, www.fws.gov/wetlands/Data/Mapper.html integrates digital map data with other resource information. We also recommend you contact the U.S. Army Corps of Engineers for permitting requirements under section 404 of the Clean Water Act if your proposed action could impact floodplains or wetlands.

MIGRATORY BIRDS

The MBTA prohibits the taking of migratory birds, nests, and eggs, except as permitted by the Service's Migratory Bird Office. To minimize the likelihood of adverse impacts to migratory birds, we recommend construction activities occur outside the general bird nesting season from March through August, or that areas proposed for construction during the nesting season be surveyed, and when occupied, avoided until the young have fledged.

We recommend review of Birds of Conservation Concern at website www.fws.gov/migratorybirds/CurrentBirdIssues/Management/BCC.html to fully evaluate the effects to the birds at your site. This list identifies birds that are potentially threatened by disturbance and construction.

BALD AND GOLDEN EAGLES

The bald eagle (*Haliaeetus leucocephalus*) was delisted under the ESA on August 9, 2007. Both the bald eagle and golden eagle (*Aquila chrysaetos*) are still protected under the MBTA and BGEPA. The BGEPA affords both eagles protection in addition to that provided by the MBTA, in particular, by making it unlawful to "disturb" eagles. Under the BGEPA, the Service may issue limited permits to incidentally "take" eagles (e.g., injury, interfering with normal breeding, feeding, or sheltering behavior nest abandonment). For information on bald and golden eagle management guidelines, we recommend you review information provided at www.fws.gov/midwest/eagle/guidelines/bgepa.html.

On our web site www.fws.gov/southwest/es/NewMexico/SBC_intro.cfm, we have included conservation measures that can minimize impacts to federally listed and other sensitive species. These include measures for communication towers, power line safety for raptors, road and highway improvements, spring developments and livestock watering facilities, wastewater facilities, and trenching operations.

We also suggest you contact the New Mexico Department of Game and Fish, and the New Mexico Energy, Minerals, and Natural Resources Department, Forestry Division for information regarding State fish, wildlife, and plants.

Thank you for your concern for endangered and threatened species and New Mexico's wildlife habitats. We appreciate your efforts to identify and avoid impacts to listed and sensitive species in your project area. For further consultation on your proposed activity, please call 505-346-2525 or email nmesfo@fws.gov and reference your Service Consultation Tracking Number.

Attachment



United States Department of Interior
Fish and Wildlife Service

Project name: Cerro Colorado Landfill SWPPP

Official Species List

Provided by:

New Mexico Ecological Services Field Office

2105 OSUNA ROAD NE

ALBUQUERQUE, NM 87113

(505) 346-2525

<http://www.fws.gov/southwest/es/NewMexico/>

http://www.fws.gov/southwest/es/ES_Lists_Main2.html

Consultation Code: 02ENNM00-2016-SLI-0532

Event Code: 02ENNM00-2016-E-00559

Project Type: WATER QUALITY MODIFICATION

Project Name: Cerro Colorado Landfill SWPPP

Project Description: Cerro Colorado Landfill SWPPP eligibility determination related to endangered species.

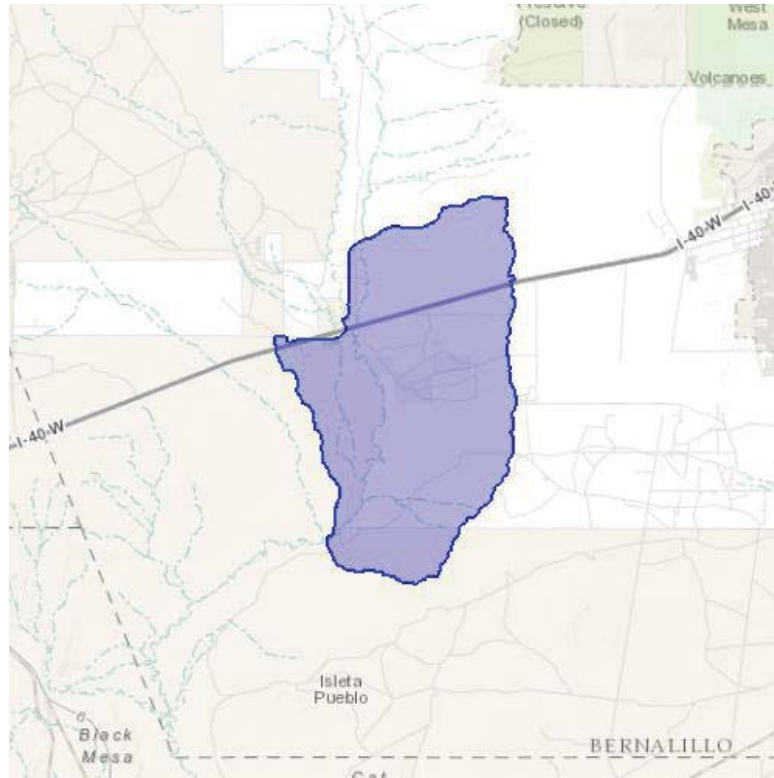
Please Note: The FWS office may have modified the Project Name and/or Project Description, so it may be different from what was submitted in your previous request. If the Consultation Code matches, the FWS considers this to be the same project. Contact the office in the 'Provided by' section of your previous Official Species list if you have any questions or concerns.



United States Department of Interior
Fish and Wildlife Service

Project name: Cerro Colorado Landfill SWPPP

Project Location Map:



Project Coordinates: The coordinates are too numerous to display here.

Project Counties: Bernalillo, NM



United States Department of Interior
Fish and Wildlife Service

Project name: Cerro Colorado Landfill SWPPP

Endangered Species Act Species List

There are a total of 5 threatened or endangered species on your species list. Species on this list should be considered in an effects analysis for your project and could include species that exist in another geographic area. For example, certain fish may appear on the species list because a project could affect downstream species. Critical habitats listed under the **Has Critical Habitat** column may or may not lie within your project area. See the **Critical habitats within your project area** section further below for critical habitat that lies within your project. Please contact the designated FWS office if you have questions.

Birds	Status	Has Critical Habitat	Condition(s)
Mexican Spotted owl (<i>Strix occidentalis lucida</i>) Population: Entire	Threatened	Final designated	
Southwestern Willow flycatcher (<i>Empidonax traillii extimus</i>) Population: Entire	Endangered	Final designated	
Yellow-Billed Cuckoo (<i>Coccyzus americanus</i>) Population: Western U.S. DPS	Threatened	Proposed	
Fishes			
Rio Grande silvery minnow (<i>Hybognathus amarus</i>) Population: Entire, except where listed as an experimental population	Endangered	Final designated	
Mammals			
New Mexico meadow jumping mouse (<i>Zapus hudsonius luteus</i>)	Endangered	Proposed	



United States Department of Interior
Fish and Wildlife Service

Project name: Cerro Colorado Landfill SWPPP

Critical habitats that lie within your project area

There are no critical habitats within your project area.



United States Department of the Interior



FISH AND WILDLIFE SERVICE
New Mexico Ecological Services Field Office
2105 Osuna Road Ne
Albuquerque, NM 87113-1001
Phone: (505) 346-2525 Fax: (505) 346-2542
<http://www.fws.gov/southwest/es/NewMexico/>
http://www.fws.gov/southwest/es/ES_Lists_Main2.html

In Reply Refer To:

May 06, 2021

Consultation Code: 02ENNM00-2021-SLI-0947

Event Code: 02ENNM00-2021-E-02250

Project Name: 2021 MSGP SWPPP - Cerro Colorado Landfill Facility

Subject: Updated list of threatened and endangered species that may occur in your proposed project location or may be affected by your proposed project

To Whom It May Concern:

Thank you for your recent request for information on federally listed species and important wildlife habitats that may occur in your project area. The U.S. Fish and Wildlife Service (Service) has responsibility for certain species of New Mexico wildlife under the Endangered Species Act (ESA) of 1973 as amended (16 USC 1531 et seq.), the Migratory Bird Treaty Act (MBTA) as amended (16 USC 701-715), and the Bald and Golden Eagle Protection Act (BGEPA) as amended (16 USC 668-668c). We are providing the following guidance to assist you in determining which federally imperiled species may or may not occur within your project area and to recommend some conservation measures that can be included in your project design.

FEDERALLY-LISTED SPECIES AND DESIGNATED CRITICAL HABITAT

Attached is a list of endangered, threatened, and proposed species that may occur in your project area. Your project area may not necessarily include all or any of these species. Under the ESA, it is the responsibility of the Federal action agency or its designated representative to determine if a proposed action "may affect" endangered, threatened, or proposed species, or designated critical habitat, and if so, to consult with the Service further. Similarly, it is the responsibility of the Federal action agency or project proponent, not the Service, to make "no effect" determinations. If you determine that your proposed action will have "no effect" on threatened or endangered species or their respective critical habitat, you do not need to seek concurrence with the Service. Nevertheless, it is a violation of Federal law to harm or harass any federally-listed threatened or endangered fish or wildlife species without the appropriate permit.

If you determine that your proposed action may affect federally-listed species, consultation with the Service will be necessary. Through the consultation process, we will analyze information contained in a biological assessment that you provide. If your proposed action is associated with

Federal funding or permitting, consultation will occur with the Federal agency under section 7(a)(2) of the ESA. Otherwise, an incidental take permit pursuant to section 10(a)(1)(B) of the ESA (also known as a habitat conservation plan) is necessary to harm or harass federally listed threatened or endangered fish or wildlife species. In either case, there is no mechanism for authorizing incidental take "after-the-fact." For more information regarding formal consultation and HCPs, please see the Service's Consultation Handbook and Habitat Conservation Plans at www.fws.gov/endangered/esa-library/index.html#consultations.

The scope of federally listed species compliance not only includes direct effects, but also any interrelated or interdependent project activities (e.g., equipment staging areas, offsite borrow material areas, or utility relocations) and any indirect or cumulative effects that may occur in the action area. The action area includes all areas to be affected, not merely the immediate area involved in the action. Large projects may have effects outside the immediate area to species not listed here that should be addressed. If your action area has suitable habitat for any of the attached species, we recommend that species-specific surveys be conducted during the flowering season for plants and at the appropriate time for wildlife to evaluate any possible project-related impacts.

Candidate Species and Other Sensitive Species

A list of candidate and other sensitive species in your area is also attached. Candidate species and other sensitive species are species that have no legal protection under the ESA, although we recommend that candidate and other sensitive species be included in your surveys and considered for planning purposes. The Service monitors the status of these species. If significant declines occur, these species could potentially be listed. Therefore, actions that may contribute to their decline should be avoided.

Lists of sensitive species including State-listed endangered and threatened species are compiled by New Mexico state agencies. These lists, along with species information, can be found at the following websites:

Biota Information System of New Mexico (BISON-M): www.bison-m.org

New Mexico State Forestry. The New Mexico Endangered Plant Program:
www.emnrd.state.nm.us/SFD/ForestMgt/Endangered.html

New Mexico Rare Plant Technical Council, New Mexico Rare Plants: nmrareplants.unm.edu

Natural Heritage New Mexico, online species database: nhnm.unm.edu

WETLANDS AND FLOODPLAINS

Under Executive Orders 11988 and 11990, Federal agencies are required to minimize the destruction, loss, or degradation of wetlands and floodplains, and preserve and enhance their natural and beneficial values. These habitats should be conserved through avoidance, or mitigated to ensure that there would be no net loss of wetlands function and value.

We encourage you to use the National Wetland Inventory (NWI) maps in conjunction with ground-truthing to identify wetlands occurring in your project area. The Service's NWI program website, www.fws.gov/wetlands/Data/Mapper.html integrates digital map data with other resource information. We also recommend you contact the U.S. Army Corps of Engineers for permitting requirements under section 404 of the Clean Water Act if your proposed action could impact floodplains or wetlands.

MIGRATORY BIRDS

The MBTA prohibits the taking of migratory birds, nests, and eggs, except as permitted by the Service's Migratory Bird Office. To minimize the likelihood of adverse impacts to migratory birds, we recommend construction activities occur outside the general bird nesting season from March through August, or that areas proposed for construction during the nesting season be surveyed, and when occupied, avoided until the young have fledged.

We recommend review of Birds of Conservation Concern at website www.fws.gov/migratorybirds/CurrentBirdIssues/Management/BCC.html to fully evaluate the effects to the birds at your site. This list identifies birds that are potentially threatened by disturbance and construction.

BALD AND GOLDEN EAGLES

The bald eagle (*Haliaeetus leucocephalus*) was delisted under the ESA on August 9, 2007. Both the bald eagle and golden eagle (*Aquila chrysaetos*) are still protected under the MBTA and BGEPA. The BGEPA affords both eagles protection in addition to that provided by the MBTA, in particular, by making it unlawful to "disturb" eagles. Under the BGEPA, the Service may issue limited permits to incidentally "take" eagles (e.g., injury, interfering with normal breeding, feeding, or sheltering behavior nest abandonment). For information on bald and golden eagle management guidelines, we recommend you review information provided at www.fws.gov/midwest/eagle/guidelines/bgepa.html.

On our web site www.fws.gov/southwest/es/NewMexico/SBC_intro.cfm, we have included conservation measures that can minimize impacts to federally listed and other sensitive species. These include measures for communication towers, power line safety for raptors, road and highway improvements, spring developments and livestock watering facilities, wastewater facilities, and trenching operations.

We also suggest you contact the New Mexico Department of Game and Fish, and the New Mexico Energy, Minerals, and Natural Resources Department, Forestry Division for information regarding State fish, wildlife, and plants.

Thank you for your concern for endangered and threatened species and New Mexico's wildlife habitats. We appreciate your efforts to identify and avoid impacts to listed and sensitive species in your project area. For further consultation on your proposed activity, please call 505-346-2525 or email nmesfo@fws.gov and reference your Service Consultation Tracking Number.

Attachment(s):

- Official Species List
- Migratory Birds

Official Species List

This list is provided pursuant to Section 7 of the Endangered Species Act, and fulfills the requirement for Federal agencies to "request of the Secretary of the Interior information whether any species which is listed or proposed to be listed may be present in the area of a proposed action".

This species list is provided by:

New Mexico Ecological Services Field Office

2105 Osuna Road Ne

Albuquerque, NM 87113-1001

(505) 346-2525

Project Summary

Consultation Code: 02ENNM00-2021-SLI-0947

Event Code: 02ENNM00-2021-E-02250

Project Name: 2021 MSGP SWPPP - Cerro Colorado Landfill Facility

Project Type: Guidance

Project Description: 18000 Cerro Colorado Rd SW, Albuquerque NM 87121 and flow of discharge off the facility to point of discharge to impaired waters; Documentation of eligibility with respect to Endangered Species Coverage Under the Multi-Sector General Permit (MSGP 2021) for Stormwater Discharges Associated with Industrial Activities.

Project Location:

Approximate location of the project can be viewed in Google Maps: <https://www.google.com/maps/@35.0083452,-106.92822875274089,14z>



Counties: Bernalillo County, New Mexico

Endangered Species Act Species

There is a total of 5 threatened, endangered, or candidate species on this species list.

Species on this list should be considered in an effects analysis for your project and could include species that exist in another geographic area. For example, certain fish may appear on the species list because a project could affect downstream species.

IPaC does not display listed species or critical habitats under the sole jurisdiction of NOAA Fisheries¹, as USFWS does not have the authority to speak on behalf of NOAA and the Department of Commerce.

See the "Critical habitats" section below for those critical habitats that lie wholly or partially within your project area under this office's jurisdiction. Please contact the designated FWS office if you have questions.

1. [NOAA Fisheries](#), also known as the National Marine Fisheries Service (NMFS), is an office of the National Oceanic and Atmospheric Administration within the Department of Commerce.

Mammals

NAME	STATUS
New Mexico Meadow Jumping Mouse <i>Zapus hudsonius luteus</i> There is final critical habitat for this species. The location of the critical habitat is not available. Species profile: https://ecos.fws.gov/ecp/species/7965	Endangered

Birds

NAME	STATUS
Mexican Spotted Owl <i>Strix occidentalis lucida</i> There is final critical habitat for this species. The location of the critical habitat is not available. Species profile: https://ecos.fws.gov/ecp/species/8196	Threatened
Southwestern Willow Flycatcher <i>Empidonax traillii extimus</i> There is final critical habitat for this species. The location of the critical habitat is not available. Species profile: https://ecos.fws.gov/ecp/species/6749	Endangered
Yellow-billed Cuckoo <i>Coccyzus americanus</i> Population: Western U.S. DPS There is final critical habitat for this species. The location of the critical habitat is not available. Species profile: https://ecos.fws.gov/ecp/species/3911	Threatened

Fishes

NAME	STATUS
Rio Grande Silvery Minnow <i>Hybognathus amarus</i>	Endangered
Population: Wherever found, except where listed as an experimental population	
There is final critical habitat for this species. The location of the critical habitat is not available.	
Species profile: https://ecos.fws.gov/ecp/species/1391	

Critical habitats

THERE ARE NO CRITICAL HABITATS WITHIN YOUR PROJECT AREA UNDER THIS OFFICE'S JURISDICTION.

Migratory Birds

Certain birds are protected under the Migratory Bird Treaty Act¹ and the Bald and Golden Eagle Protection Act².

Any person or organization who plans or conducts activities that may result in impacts to migratory birds, eagles, and their habitats should follow appropriate regulations and consider implementing appropriate conservation measures, as described [below](#).

1. The [Migratory Birds Treaty Act](#) of 1918.
2. The [Bald and Golden Eagle Protection Act](#) of 1940.
3. 50 C.F.R. Sec. 10.12 and 16 U.S.C. Sec. 668(a)

THERE ARE NO FWS MIGRATORY BIRDS OF CONCERN WITHIN THE VICINITY OF YOUR PROJECT AREA.

Migratory Birds FAQ

Tell me more about conservation measures I can implement to avoid or minimize impacts to migratory birds.

[Nationwide Conservation Measures](#) describes measures that can help avoid and minimize impacts to all birds at any location year round. Implementation of these measures is particularly important when birds are most likely to occur in the project area. When birds may be breeding in the area, identifying the locations of any active nests and avoiding their destruction is a very helpful impact minimization measure. To see when birds are most likely to occur and be breeding in your project area, view the Probability of Presence Summary. [Additional measures](#) or [permits](#) may be advisable depending on the type of activity you are conducting and the type of infrastructure or bird species present on your project site.

What does IPaC use to generate the migratory birds potentially occurring in my specified location?

The Migratory Bird Resource List is comprised of USFWS [Birds of Conservation Concern \(BCC\)](#) and other species that may warrant special attention in your project location.

The migratory bird list generated for your project is derived from data provided by the [Avian Knowledge Network \(AKN\)](#). The AKN data is based on a growing collection of [survey, banding, and citizen science datasets](#) and is queried and filtered to return a list of those birds reported as occurring in the 10km grid cell(s) which your project intersects, and that have been identified as warranting special attention because they are a BCC species in that area, an eagle ([Eagle Act](#) requirements may apply), or a species that has a particular vulnerability to offshore activities or development.

Again, the Migratory Bird Resource list includes only a subset of birds that may occur in your project area. It is not representative of all birds that may occur in your project area. To get a list of all birds potentially present in your project area, please visit the [AKN Phenology Tool](#).

What does IPaC use to generate the probability of presence graphs for the migratory birds potentially occurring in my specified location?

The probability of presence graphs associated with your migratory bird list are based on data provided by the [Avian Knowledge Network \(AKN\)](#). This data is derived from a growing collection of [survey, banding, and citizen science datasets](#).

Probability of presence data is continuously being updated as new and better information becomes available. To learn more about how the probability of presence graphs are produced and how to interpret them, go to the Probability of Presence Summary and then click on the "Tell me about these graphs" link.

How do I know if a bird is breeding, wintering, migrating or present year-round in my project area?

To see what part of a particular bird's range your project area falls within (i.e. breeding, wintering, migrating or year-round), you may refer to the following resources: [The Cornell Lab of Ornithology All About Birds Bird Guide](#), or (if you are unsuccessful in locating the bird of interest there), the [Cornell Lab of Ornithology Neotropical Birds guide](#). If a bird on your migratory bird species list has a breeding season associated with it, if that bird does occur in your project area, there may be nests present at some point within the timeframe specified. If "Breeds elsewhere" is indicated, then the bird likely does not breed in your project area.

What are the levels of concern for migratory birds?

Migratory birds delivered through IPaC fall into the following distinct categories of concern:

1. "BCC Rangewide" birds are [Birds of Conservation Concern](#) (BCC) that are of concern throughout their range anywhere within the USA (including Hawaii, the Pacific Islands, Puerto Rico, and the Virgin Islands);
2. "BCC - BCR" birds are BCCs that are of concern only in particular Bird Conservation Regions (BCRs) in the continental USA; and
3. "Non-BCC - Vulnerable" birds are not BCC species in your project area, but appear on your list either because of the [Eagle Act](#) requirements (for eagles) or (for non-eagles) potential susceptibilities in offshore areas from certain types of development or activities (e.g. offshore energy development or longline fishing).

Although it is important to try to avoid and minimize impacts to all birds, efforts should be made, in particular, to avoid and minimize impacts to the birds on this list, especially eagles and BCC species of rangewide concern. For more information on conservation measures you can implement to help avoid and minimize migratory bird impacts and requirements for eagles, please see the FAQs for these topics.

Details about birds that are potentially affected by offshore projects

For additional details about the relative occurrence and abundance of both individual bird species and groups of bird species within your project area off the Atlantic Coast, please visit the [Northeast Ocean Data Portal](#). The Portal also offers data and information about other taxa besides birds that may be helpful to you in your project review. Alternately, you may download the bird model results files underlying the portal maps through the [NOAA NCCOS Integrative Statistical](#)

[Modeling and Predictive Mapping of Marine Bird Distributions and Abundance on the Atlantic Outer Continental Shelf](#) project webpage.

Bird tracking data can also provide additional details about occurrence and habitat use throughout the year, including migration. Models relying on survey data may not include this information. For additional information on marine bird tracking data, see the [Diving Bird Study](#) and the [nanotag studies](#) or contact [Caleb Spiegel](#) or [Pam Loring](#).

What if I have eagles on my list?

If your project has the potential to disturb or kill eagles, you may need to [obtain a permit](#) to avoid violating the Eagle Act should such impacts occur.

Proper Interpretation and Use of Your Migratory Bird Report

The migratory bird list generated is not a list of all birds in your project area, only a subset of birds of priority concern. To learn more about how your list is generated, and see options for identifying what other birds may be in your project area, please see the FAQ "What does IPaC use to generate the migratory birds potentially occurring in my specified location". Please be aware this report provides the "probability of presence" of birds within the 10 km grid cell(s) that overlap your project; not your exact project footprint. On the graphs provided, please also look carefully at the survey effort (indicated by the black vertical bar) and for the existence of the "no data" indicator (a red horizontal bar). A high survey effort is the key component. If the survey effort is high, then the probability of presence score can be viewed as more dependable. In contrast, a low survey effort bar or no data bar means a lack of data and, therefore, a lack of certainty about presence of the species. This list is not perfect; it is simply a starting point for identifying what birds of concern have the potential to be in your project area, when they might be there, and if they might be breeding (which means nests might be present). The list helps you know what to look for to confirm presence, and helps guide you in knowing when to implement conservation measures to avoid or minimize potential impacts from your project activities, should presence be confirmed. To learn more about conservation measures, visit the FAQ "Tell me about conservation measures I can implement to avoid or minimize impacts to migratory birds" at the bottom of your migratory bird trust resources page.

APPENDIX H
HISTORIC PROPERTIES PRESERVATION SCREENING MEMORANDUM

This Page Intentionally Left Blank



Weston Solutions, Inc.
3840 Commons Ave. NE
Albuquerque, NM 87109
(505) 837-6520
WestonSolutions.com



May 6, 2021

To: Jake Daugherty and Michael Buchanan, Environmental Compliance Coordinators
City of Albuquerque (COA) Solid Waste Management Department (SWMD)

Re: City of Albuquerque Cerro Colorado Landfill Storm Water Pollution Prevention Plan Eligibility Screening
for the National Historic Preservation Act

Dear Jake and Michael,

On behalf of the City of Albuquerque (COA), Weston Solutions Inc. (Weston) presents the results of the determination of eligibility for the SWMD Department's Cerro Colorado Landfill, regarding the National Historic Preservation Act (NHPA), for coverage under the Multi-Sector General Permit (MSGP 2021) for Storm Water Discharges associated with Industrial Activity.

A search of historic places was conducted using the National Register of Historic Places Database and Research (<https://www.nps.gov/subjects/nationalregister/database-research.htm>) and included all historic properties located in Albuquerque, NM from 1966 to 2012. As a result of this search, there are no historic properties located within the facility or on the adjacent properties, and thus, discharges from the facility do not have the potential to influence any known historic properties. The facility does not have plans to install any new storm water control measure in the area; therefore, the facility meets the eligibility of **Criterion A**.

Criterion A is described as follows:

Your storm water discharges, and allowable non-storm water discharges do not have the potential to have an effect on historic properties and you are not constructing or installing new storm water control measures on your site that cause subsurface disturbance.

Very truly yours,

Shannon Archuleta
Environmental Scientist
Weston Solutions, Inc.

APPENDIX I
COPY OF THE NOTICE OF INTENT, ACKNOWLEDGEMENT LETTER AND DELEGATION OF AUTHORITY
LETTER

This Page Intentionally Left Blank

CITY OF ALBUQUERQUE

Office of the Mayor/Chief Administrative Officer



September 15, 2015

U.S. Environmental Protection Agency, Region 6
Water Enforcement Branch (6EN-WC)
1445 Ross Avenue Suite 1200
Dallas, TX 75202-2733

Re: Delegation of Signatory Authority for City of Albuquerque, National Pollutant Discharge Detection and Elimination System (NPDES) Permits

To Whom It May Concern:

As the Chief Administrative Officer (CAO) of the City of Albuquerque (COA), in accordance with Federal Regulations 40 CFR 122.22(b), I hereby delegate the following positions to be Certifying Officials for the purposes of reporting under the COA's federal permits with the U.S. Environmental Protection Agency. These federal permits include: (1) General Permit NMR04A000 for its Municipal Separate Storm Sewer System (MS4); (2) Multi-Sector General Permit (MSGP) NMR05000 for its Transit and Solid Waste Facilities and; (3) Construction General Permit (CGP) for COA public projects.

PO Box 1293

Chief Administrative Officer

Albuquerque

- Annual Report for the Municipal Separate Storm Sewer System (MS4) Permit
- Requests for changes to the COA's Storm Water Management Program (SWMP)

New Mexico 87103

Engineering Division Manager

www.cabq.gov

- Data Monitoring Reports (DMRs) for the MS4 Permit
- Certification of Storm Water Pollution Prevention Plans (SWPPPs) and Annual Reports for general facilities as needed under the MSGP
- Certification of eNOIs general facilities as needed under the MSGP

Transit Director

- Data Monitoring Reports (DMRs) for Transit facilities
- Certification of Storm Water Pollution Prevention Plans (SWPPPs) and Annual Reports under the MSGP for Transit facilities
- Certification of eNOIs under the MSGP for Transit facilities

Solid Waste Director

- Data Monitoring Reports (DMRs) for Solid Waste Facilities
- Certification of Storm Water Pollution Prevention Plans (SWPPPs) and Annual Reports under the MSGP for Solid Waste Facilities
- Certification of eNOIs under the MSGP

Department of Municipal Development (DMD) Construction Management Managers

- Certification of SWPPPs for DMD and Capital Implementation Program (CIP) projects under the CGP
- Certification of eNOIs for DMD and CIP projects under the CGP

Parks & Recreation (Parks) Construction Managers, Supervisors, or Superintendents

- Certification of SWPPPs for CIP and Parks projects under the CGP
- Certification of eNOIs for CIP and Parks projects under the CGP

DMD and Parks Construction Managers, Supervisors, Superintendents, or Inspectors

- Construction Site Inspection Forms for DMD, CIP, and Parks projects under the CGP

This letter designates positions of signatory authority rather than naming specific individuals who hold the designated positions. The COA has chosen this method of delegating signatory authority to ensure consistency in meeting permit requirements during staff changes.

I understand the role and responsibilities of the COA as they relate to the MS4 permit and have selected individuals in these positions because of their understanding and knowledge of the permit requirements, including stormwater certification for construction personnel.

Best Regards,



Robert J. Perry
Chief Administrative Officer

Electronic cc: Wilfred Gallegos, P.E.; Director, DMD
Melissa Lozoya, P.E.; Deputy Director, DMD
Bryan Wolfe, P.E., Construction Services Division Manager, DMD
David Harrison, P.E., Construction Services Section Manager, DMD
Ron Romero, P.E., Engineering Division Manager, DMD
Ralph Saiz, Construction Manager, Parks Construction Division, DMD
Keith Reed, P.E., Deputy Director, Parks
Bruce Rizzieri, Director, Transit
John Soladay, Director, Solid Waste
Jill Holbert, Associate Director, Solid Waste

APPENDIX J
DOCUMENTATION OF MAINTENANCE TO CONTROL MEASURES

This Page Intentionally Left Blank

**APPENDIX K
DOCUMENTATION OF CORRECTIVE ACTION TAKEN**

This Page Intentionally Left Blank

**APPENDIX L
SAMPLE AND ANALYSIS PLANS**

This Page Intentionally Left Blank

APPENDIX M
REPORTS

M1- Quarterly Routine Facility Inspections

M2 – Quarterly Visual Storm Water Assessment

M3 – EPA Industrial Storm Water Sampling Guidance

M4 – Annual Report Example

M5 – Sampling Data Reports

This Page Intentionally Left Blank

M1 – QUARTERLY ROUTINE FACILITY INSPECTIONS

This Page Intentionally Left Blank

M2 – QUARTERLY VISUAL STORM WATER ASSESSMENT

This Page Intentionally Left Blank

M3 – EPA INDUSTRIAL STORM WATER SAMPLING GUIDANCE

This Page Intentionally Left Blank

M4 – ANNUAL REPORT EXAMPLE

This Page Intentionally Left Blank

M5 – SAMPLE DATA REPORTS

This Page Intentionally Left Blank