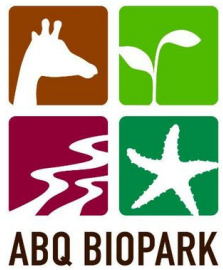




# Heritage Farm



Farm Concept  
Final Presentation  
October 09, 2019





## Mission

The Heritage Farm will be an interactive, friendly environment for families to learn where the food comes from and to showcase sustainable practices.



# Design Goals

- Create a journey through the past and present of farms and farm practices
- Create an immersive experience engaging all the senses
- Develop an interactive play area for children
- The landscape area and the animal enclosures will tell a compelling story about organic farming.
- Provide offices and storage for best operation of the Farm.
- Provide spaces to host special events
- Create spaces that will allow visitor to develop hands-on activates
- Increase revenue opportunities.
- Create spaces to encourage visitors to enjoy the space and participate in interactive activities.



# Design Influences







Heritage Farm: 16.63 acres

### Challenges:

- Need to improve power capacity for events
- The area doesn't have WIFI
- The visitor space is not well defined resulting in people getting lost and missing current attractions
- The current train route doesn't provide any attractive views for the visitors
- Not enough space for education programs
- The entrance to the Farm is not very clear
- No food and drink available for visitors in the area

### Opportunities:

- Areas to grow the Farm infrastructure
- Currently it is immersive space
- A unique space in the city dedicated to agriculture
- This area is still new for people from the city
- The parking lot next to the Farm allows for hosting events for big groups independent of the rest of the activities of the Biopark.
- Service roads located on the perimeter to avoid the conflict of service vehicle on the public path.





- 1 Hedges Farm
- 2 Education Building
- 3 Sheep and Goats  
Chicken and Turkey Barn
- 4 Playground Area
- 5 Event Space
- 6 Cattle Barn
- 7 Cattle Pasture
- 8 Horse Barn
- 9 Horse Pasture
- 10 Apple Orchards
- 11 Grape Vineyard
- 12 Crops
- 13 Hacienda Building
- 14 Interactive Animal Barn
- 15 Bee Garden
- 16 Pueblo Interactive Space
- 17 Heritage Farm Storage
- 18 Heritage Farm Office
- 19 Greenhouse
- 20 Cottonwood Gallery
- 21 Nature Play Area
- 22 Japanese Garden
- 23 River of Lights Building 1
- 24 River of Lights Building 2
- 25 Farm Equipment Storage

## Site Plan

AFH Design, LLC

Heritage Farm— Albuquerque Biopark











- |   |                      |                             |                               |
|---|----------------------|-----------------------------|-------------------------------|
| 1 Hedges Farm                                 | 7 Cattle Pasture     | 14 Interactive Animal Barn  | 21 Nature Play Area           |
| 2 Education Building                          | 8 Horse Barn         | 15 Bee Gargen               | 22 Japanese Garden            |
| 3 Sheep and Goats<br>Chicken and Turkeys Barn | 9 Horse Pasture      | 16 Pueblo interactive Space | 23 River of Lights Building 1 |
| 4 Playground Area                             | 10 Apple Orchards    | 17 Heritage Farm Storage    | 24 River of Lights Building 2 |
| 5 Event Space                                 | 11 Grape Vineyard    | 18 Heritage Farm Office     | 25 Farm Equipment Storage     |
| 6 Cattle Barn                                 | 12 Crops             | 19 Greenhouse               |                               |
|   | 13 Hacienda Building | 20 Cottonwood Gallery       |                               |





## Heritage Farm Entrance

The current entrance to the Farm it is not well defined and the visitors miss the the opportunity to visit that area of Biopark.

The entrance to the Farm needs to be reconfigure creating a preview space where visitors can congregate, have seating area with some shade trees and entrance logo with a new reconfigure branding.

Some Farm equipment's can help to create the atmosphere at the entrance of the Farm.

It is necessary to review the circulation of the Botanical Garden previous to access the Farm, And rework the entrance to the Rose Garden and the Farm. This concept proposed to create a decision point where the circulation lead visitors to the Rose Garden or the Farm, both with the same dimensions and characteristics. It is important create and equal entrance to the Farm than the Rose Garden.

## Hedges Farm Plaza

The Hedges Farm Plaza is the space where visitors can oriented, where the interpretive will communicate The main message.

This space will be surrounded by trees to provide shade and also crops to create the ambiance of a Farm. Some Farm equipment's can be place in this area so set the atmosphere of the Farm.

The idea of this space is to create a meeting place, where people can meet before or after the Farm Experience.

Shade and seating area needs to be located on this space.

One of the names proposed for this space: Roasting Chile Plaza





### Hedges Farm

- The redesign needs to address visitor views outside the building so the visitors can observe the process of pressing apples. This space will be a wood shade structure connected to the Hedge Farm Plaza.
- This new viewing area needs to provide shade for the visitors.
- The inside of the building needs to address the state regulation for dietary sanitation conditions.

### Service area

- Design a service path that connects the Hedges Farm with the parking area. This service door will be used during the season.

### Education Building

- Retrofit this building for education workshops, additional outlets and Wi-Fi connections.
- The current employee breakroom will be the new storage area for the education building.
- Outside the education building, will be surrounded by herb garden.

### Existing Sheep – Goats –Chicken and Turkey Barn



### Remodel Guidelines Inside the Barn

- Replace and reduce the inside height of the current fence to allow visitors to view the animals inside the barn. The mesh will be replaced with wood frame and 1"X 1" wired mesh.
- Relocate the storage area inside the barn on the future storage building for the Farm and convert these areas to indoor spaces for animals.
- Create a keeper area with counter space with a sink and tool storage.
- Improve the light inside the Barn.
- Address drainage inside the Barn.



Sheep – Goats –Chicken and Turkey Barn



Soil Layer Exhibit: The visitors can interact with the raised beds. The raised beds with sides made to open and close without disturbing the soil or plants (Plexiglas overlaid with wood). The goal is to showcase the microbiology and relationship between plants, fungi, bacteria, water, carbon, and oxygen, to name a few of the components, and see how the different configurations of the solids are associated with the agriculture. Each of the raised beds should have their own irrigation system.



Current Barn	2,448 sq ft
Current outdoor yard	6,536 sq ft
New Chicken coop outdoor space	1,230 sq ft
New Turkey coop outdoor space	1,000 sq ft
Add wood frame and 1"x1" wire mesh.	
Goats and sheep outdoor space	4,306 sq ft
Outdoor yard 01	3,000 sq ft
Outdoor yard 02	2,200 sq ft
Outdoor yard 03	1,900 sq ft



Example Chicken Coop

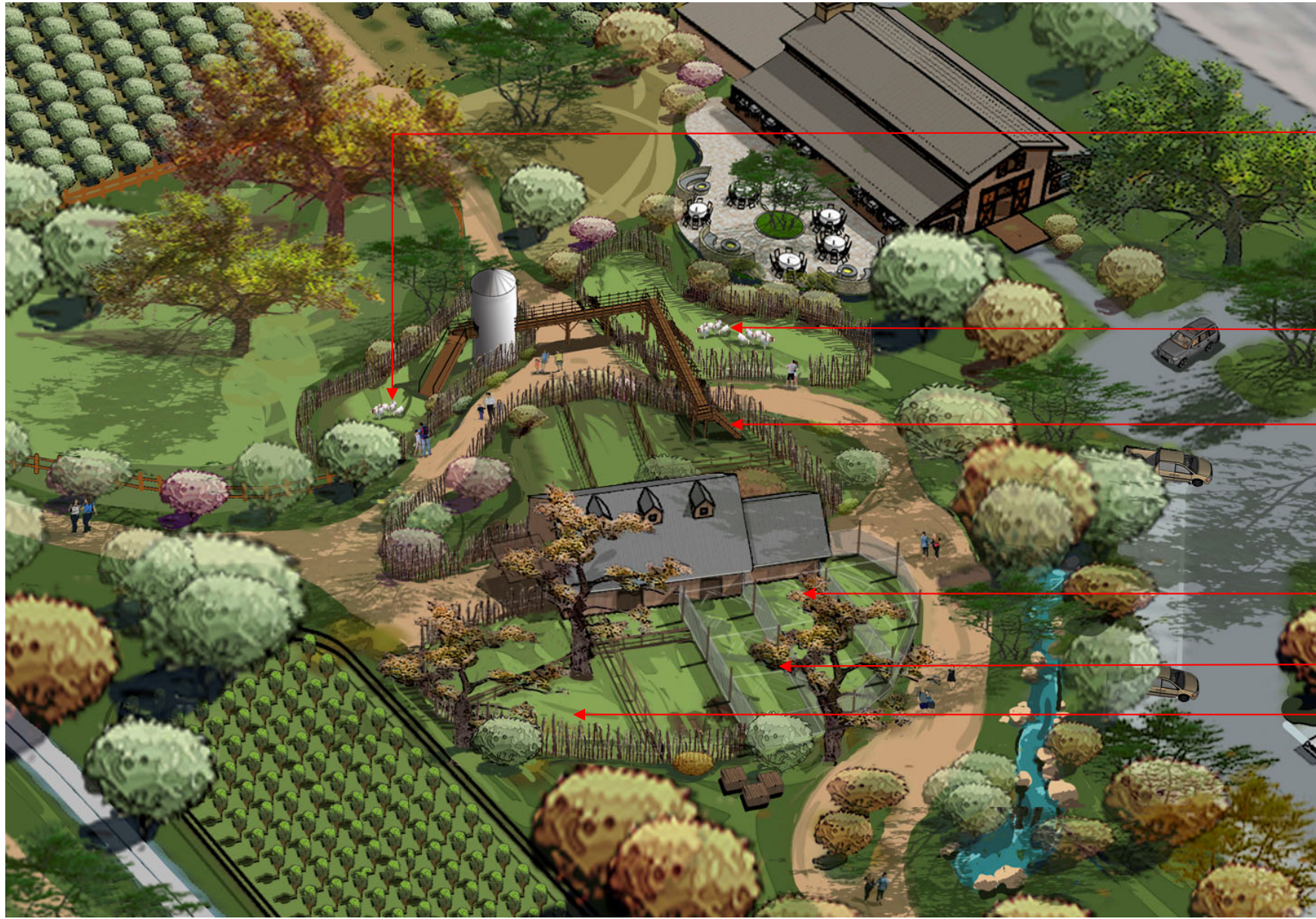
- All the outdoor yards animals (goats and sheep) will be connected by elevated bridges.
- The fence around the yards is 6' tall. Coyote fence and mesh 3'X1/2" wired mesh
- Provide animal drinking fountains in all indoor and outdoor yards.
- The outdoor yard 3, will allow the goats and sheep's to connect with the horse pasture.
- The outdoor yard 3, will include a silo as part of the bridge and enrichment for the animals.
- Expand the current coops size with higher roof with roosting opportunities.



Example new yard fence  
Coyote fence







Goats and Sheep

Goats and Sheep

Goats and Sheep

Chickens

Turkey

Goats and Sheep

# Existing Barn

AFH Design, LLC

Heritage Farm— Albuquerque Biopark







## Event Space and Existing Barn

AFH Design, LLC

Heritage Farm— Albuquerque Biopark



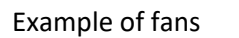
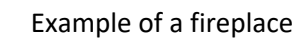


6,000 sq ft  
2,800 sq ft

- The Event space must have a direct connection to the parking lot with a drop off area.
- Create a entry plaza before arriving to the event space
- The event space must have the possibility to be divided and serve two events at the same time, that will apply to the outdoor terrace.
- The design of the event space must have a direct view of the farm and feel as connected to It, but a separation must exist. People from the farm can't access the event space and people from the event space can access the Farm with assistance from the ABQ Biopark staff.
- Light and sound system
- WIFI system
- Gas fireplace
- Fans
- The Event space is an open pavilion that will have telescopic sliding doors that will be used to control temperature during events.

3,600 sq ft

- Service road will connect with the service building
- Four spaces for parking on the service area
- Design area for deliveries
- 
- Restrooms (minimum – please review code)
  - 3 stalls for men
  - 3 stalls for women
  - 1 Family Restroom
- Storage
  - Storage for seats and tables for events
- Preparation Kitchen



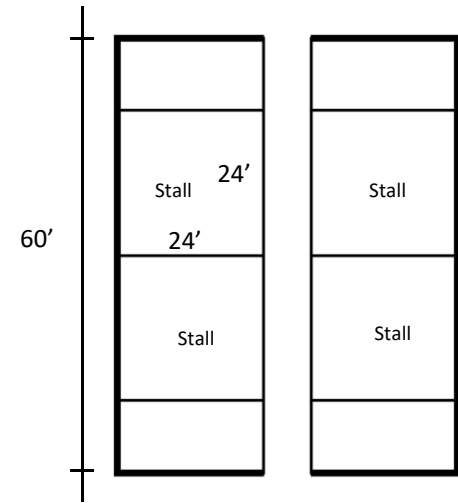


Horse Barn and Horse Pasture



Horse Barn 2,248 sq ft  
Horse Pasture 38,000 sq ft

- Four (4) horse stalls
- Tack room with security door
- Ventilation system
- Overhead horse stall fan mounted at the top of the stall
- Provide natural light, solatube or fixed windows
- Optional mezzanine for hay storage
- Provide feeders in each stall
- Water supply for each stall
- Free-standing stalls
- Flooring concrete with rubber mat
- Keeper walking and vehicle circulation on reinforce concrete
- Equipment storage
- The architecture of the barn will be Spanish colonial



Veterinary Procedure Area

- 2 stalls at least 24 x 24 in a separate section of the barn. Needs to have its own turn out area(small area) if possible in the event that we need to separate horses or cattle but will maintain welfare standards.
- Portable scale
- Squeeze chute
- One (1) wash stall

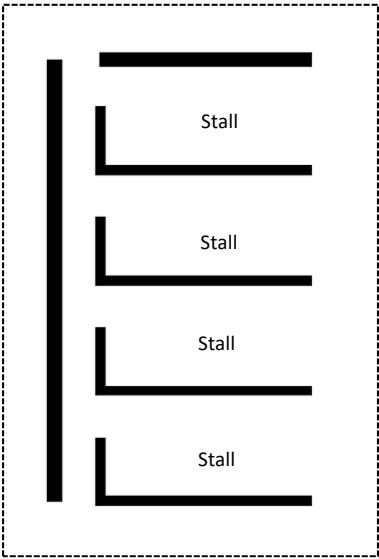
↔ Note: the horses and the cattle can be transferred to either one of the pastures.  
The cross path will have to be scheduled by the staff as it will cross the visitor path.

Cattle Barn and Cattle Pasture



Cattle Barn 3,200 sq ft  
Cattle Pasture 31,500 sq ft

- Four (4) cattle stalls
- Ventilation system
- Overhead cattle stall fan mounted at the top of the stall
- Provide natural light, solatube or fixed windows
- Optional mezzanine for hay storage
- Provide feeders in each stall
- Provide water supply for each stall
- Free-standing stalls
- Concrete floor with rubber mat
- Keeper walking and vehicle circulation on reinforce concrete







Rubber mat



Cattle squeeze chute



Horse squeeze chute



Horse stalls



Example of horse and cattle transfer

# Examples

AFH Design, LLC

Heritage Farm– Albuquerque Biopark







# Hacienda Building

AFH Design, LLC

Heritage Farm– Albuquerque Biopark





The Hacienda Building is inspired by New Mexico hacienda architectural style.  
The new building will provide improved visitors amenities.

Train Station	2,958 sq ft
Restrooms	1,302 sq ft
Food / Retail space	1,302 sq ft

- Train Station

The design of the train station must follow the requirements of the train that the ABQ BioPak chooses at the moment of the design.

- Create an space to sell tickets

- Visitor Restrooms (minimum – review code)

4 Stalls for women including ADA stall

3 stalls for men including ADA stall

1 family restroom

Water fountain and refill station

Restroom service area

- Food / Retail space

This space will combine retail store and food service.

The food service is a grab-and-go concept with some seating areas round the patio, the food prep space will be preparation kitchen with sinks including a hand sink.

A commercial fridge/ freezer will be available at the preparation kitchen.

The retail space will have storage area.

The food service and retail will have independent points of sale systems, the location and the design must cover both.

Farm Playground Area



- The playground is inspired by Farm life.
- The playground should have only one access/ exit point for safety.
- All the playground area should be enclosed with coyote fence and wired mesh
- Provide shade in all the elements.
- Avoid plastic playground equipment and avoid hot surfaces.
- The Playground should be designed for minimal staff intervention.
- The playground should be design to meet safety and accessibility standards as outlined by the most recent ADA standard for accessible design and the CSPC's (Consumer Product Safety Commission) Public Playground Safety Handbook, ASTM.
- Follow state regulations.

Hacienda Building

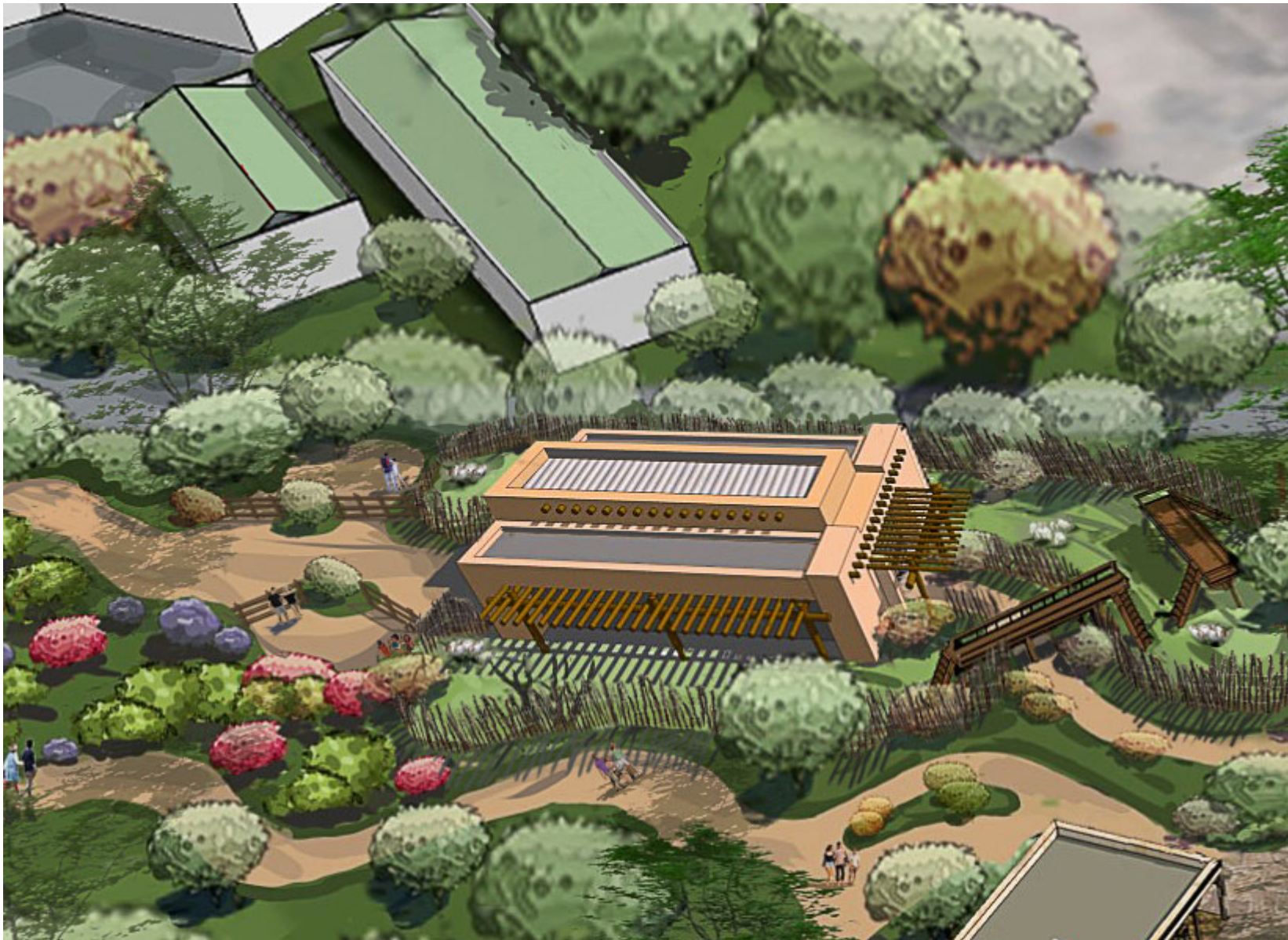
AFH Design, LLC

Heritage Farm– Albuquerque Biopark





Interactive Animal Barn



The interactive animal barn will be a seasonal exhibit where visitors will have the chance interact and feed the animals.  
A feeding area will include a place for visitors to buy the food from a dispenser and feed the animals thru the mesh. Provide hand wash stations.

The Barn will have eight (8) stalls, 4 stalls across another 4 stalls divided by the main visitor service path.  
Provide tool storage space and storage for feed.

Interactive Animal Barn	1,900 sq ft
Pasture 01	2,348 sq ft
Pasture 02	2,775 sq ft
Pasture 03	1,400 sq ft
Feeding Area	300 sq ft

- All the pastures are connected with elevated bridge
- The fence around the pasture is 6' tall. Combination of coyote fence and welded wired mesh.



Example hand wash station

Interactive Animal Barn

AFH Design, LLC

Heritage Farm– Albuquerque Biopark





Cottonwood Gallery



The Cottonwood Gallery will be redesigned and it will be integrated as part of the Heritage Farm. This area needs to be designed as a self-exploration experience. The concept is to discuss the Bosque and give visitors the opportunity to get immersed into the space to learn about the ecosystem; the fauna and flora and how people can value and protect it.

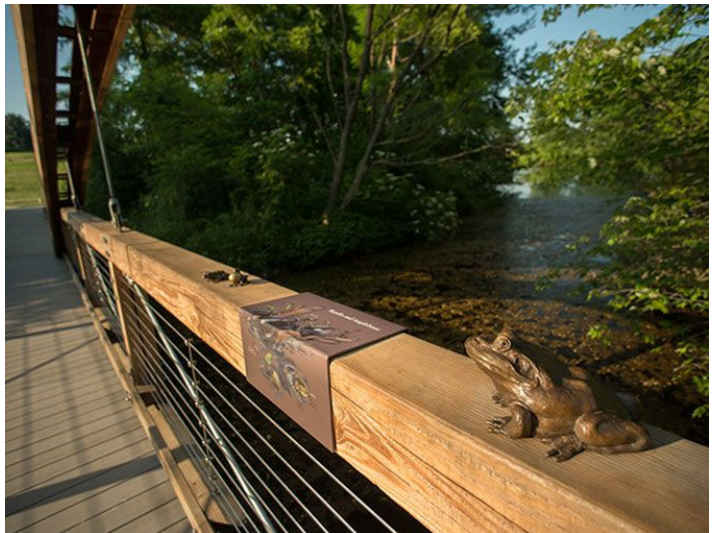
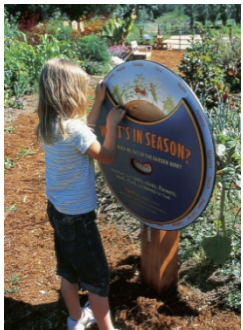
The aquatic component will include 2 lakes; the overflow of these lakes will be the water coming from the acequias that provide irrigation to the orchards. This will be a bio-filtration component that will have to be presented as an interpretive element for the project.

The entrance to the new Cottonwood Gallery starts and finishes next to the Hacienda building. The visitors will loop around the lake where they will have the opportunity to have different views of the Bosque.

Provide interactive, interpretive elements throughout the loop with various opportunities to see, touch, and hear the different elements of the Bosque.

The boardwalk will integrate sculptures that will highlight some of the small fauna and flora of the will be part of the Bosque.

Cottonwood Gallery total area	2.90 Acres
Nature Play Area	13,000 sq ft



Cottonwood Gallery

AFH Design, LLC

Heritage Farm— Albuquerque Biopark







Office Building and Maintenance Area



Greenhouse

The current river of lights buildings will remain with the same use.

### Staff Offices

Office Building 1,200 sq ft

- One office space 12' X12'
- One office space 14'X20'
- Breakroom with kitchenette and seating area
- Meeting room
- Restrooms with showers – 2 stalls and 2 showers
- Locker room with capacity for twelve employees
- Office Storage

Maintenance and Storage Building 2,200 sq ft

Office space

Maintenance Area

- Material storage
- Irrigation parts
- Tool Storage

### Equipment Bay

Outdoor parking space with a covered

- Tractors, wagons, carts, trucks, trailers, tractor attachments

### Greenhouse

Greenhouse 5,000 sq ft

- Crop starts and rotations
- Browse Garden/vertical garden
- Outdoor transition area (harden off plants before being planted)



Example of the greenhouse



Example of the farm equipment parking space



Example of the office and maintenance building



Non-Mandatory Site Visit  
Monday, October 14  
1pm - 2pm

Please call Marisa Ortiz to confirm attendance.  
505-768-4659