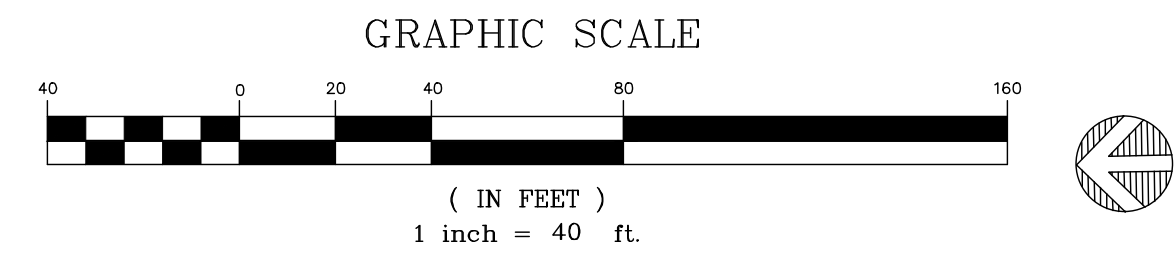


A1 CAMPUS PLAN
1" = 40'-0"



***THIS IS A CONCEPTUAL LAYOUT ILLUSTRATING THE SUBJECT PROPERTY, THE EXISTING COMMUNITY SAFETY FACILITY, EXISTING DRAINAGE AND POND AREAS AND POSSIBLE FUTURE MARKET/PARK AREA.**

Cushing Terrell
cushingterrell.com
800.757.9522

THE HARTMAN + MAJEWSKI
DESIGN GROUP
Architects • Engineers • Interior Design
Planners • Urban Designers • LEED®

120 Vassar Dr SE Suite 100
Albuquerque New Mexico 87106
T 505 242 6880 • F 505 242 6881

CITY OF ALBUQUERQUE CAPITAL IMPLEMENTATION PROGRAM			
PROJECT TITLE: ALBUQUERQUE COMMUNITY SAFETY DEPARTMENT FACILITY			
DRAWING TITLE: CAMPUS PLAN			
Design Review Committee	City Engineer Approval	Mo./Day/Yr.	Mo./Day/Yr.
PERMIT DRAWINGS	City Project No. 7881.00	DG Project No. 6600.AS32	Zone Map No. L-17-Z
		DWG. CP-101	Sheet

SURVEY INFORMATION		FIELD NOTES	
NO.	BY	DATE	

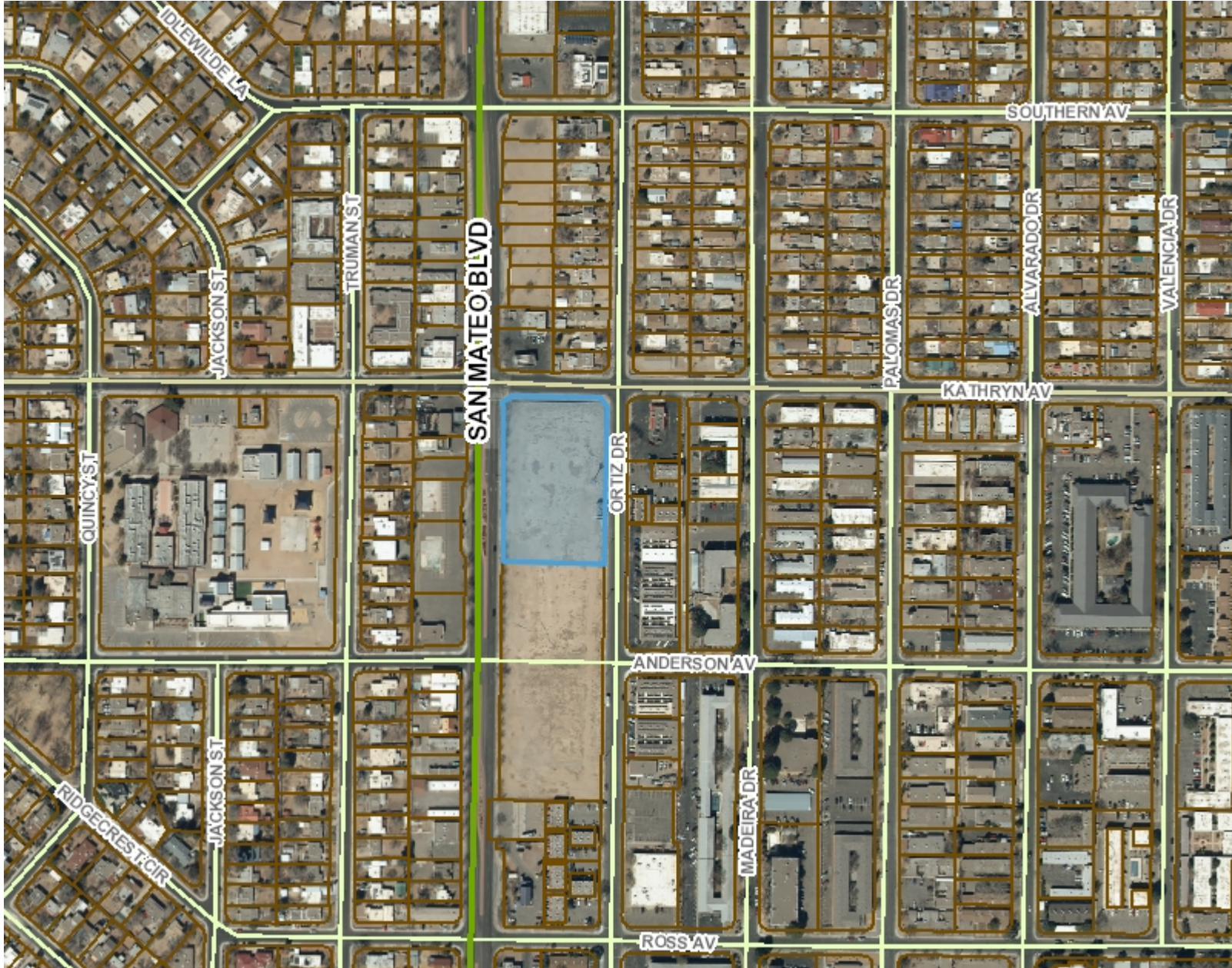
BENCH MARK	
A.C.S. MONUMENT "14-L17"	NEW MEXICO STATE PLANE COORDINATES
CENTRAL ZONE (NAD 83)	
N=1,480,200.281 US SURVEY FEET	
E=1,534,391.165 US SURVEY FEET	
DELTA ALPHA = -00°12'12.90"	
GROUND TO GRID FACTOR: 0.99962355	
ELEV=5319.339 (NAVD 88)	

AS-BUILT INFORMATION	
CONTRACTOR	DATE

MICRO-FILM INFORMATION	
RECORDED BY:	DATE



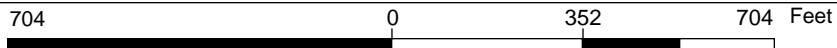
1100 San Mateo - RFP Subject Property 3ac+/-



Legend

- Primary Streets**
 - Freeway
 - Principal Arterial
 - Minor Arterial
 - Local Streets
 - BN and SF Railroad
- Bernalillo County Parcels**
 - Corrales
 - Edgewood
 - Los Ranchos
 - Rio Rancho
 - Tijeras
 - UNINCORPORATED

Notes



WGS_1984_Web_Mercator_Auxiliary_Sphere
3/7/2025 © City of Albuquerque

1: 4,221

The City of Albuquerque ("City") provides the data on this website as a service to the public. The City makes no warranty, representation, or guaranty as to the content, accuracy, timeliness, or completeness of any of the data provided at this website. Please visit <http://www.cabq.gov/abq-data/abq-data-disclaimer-1> for more information.
THIS MAP IS NOT TO BE USED FOR NAVIGATION