

The Mental Health Response Advisory Committee Status Report: May 16, 2017



Prepared By:

Dr. Nils Rosenbaum, Medical Director, BHS, APD

Zackary Wesley, Lieutenant, CIU, APD

Matthew Tinney, Detective, CIU, APD

Dr. Peter Winograd, Policy Analyst, CIU, APD

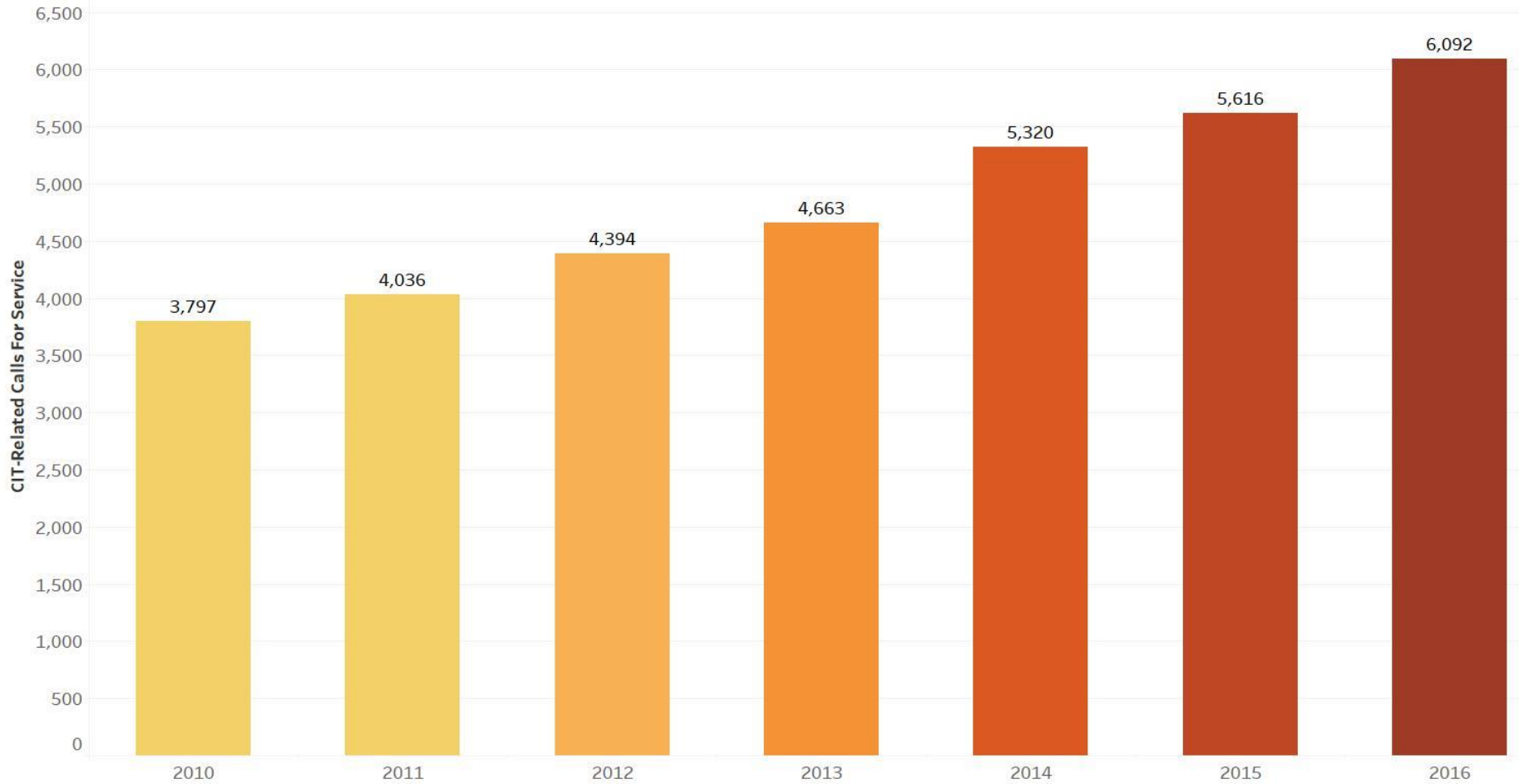
Jennifer Earheart, Project Coordinator, CIT ECHO Knowledge Network

Kylynn Brown, Data Analyst, CIU, APD

The Better The Data, The Harder The Questions

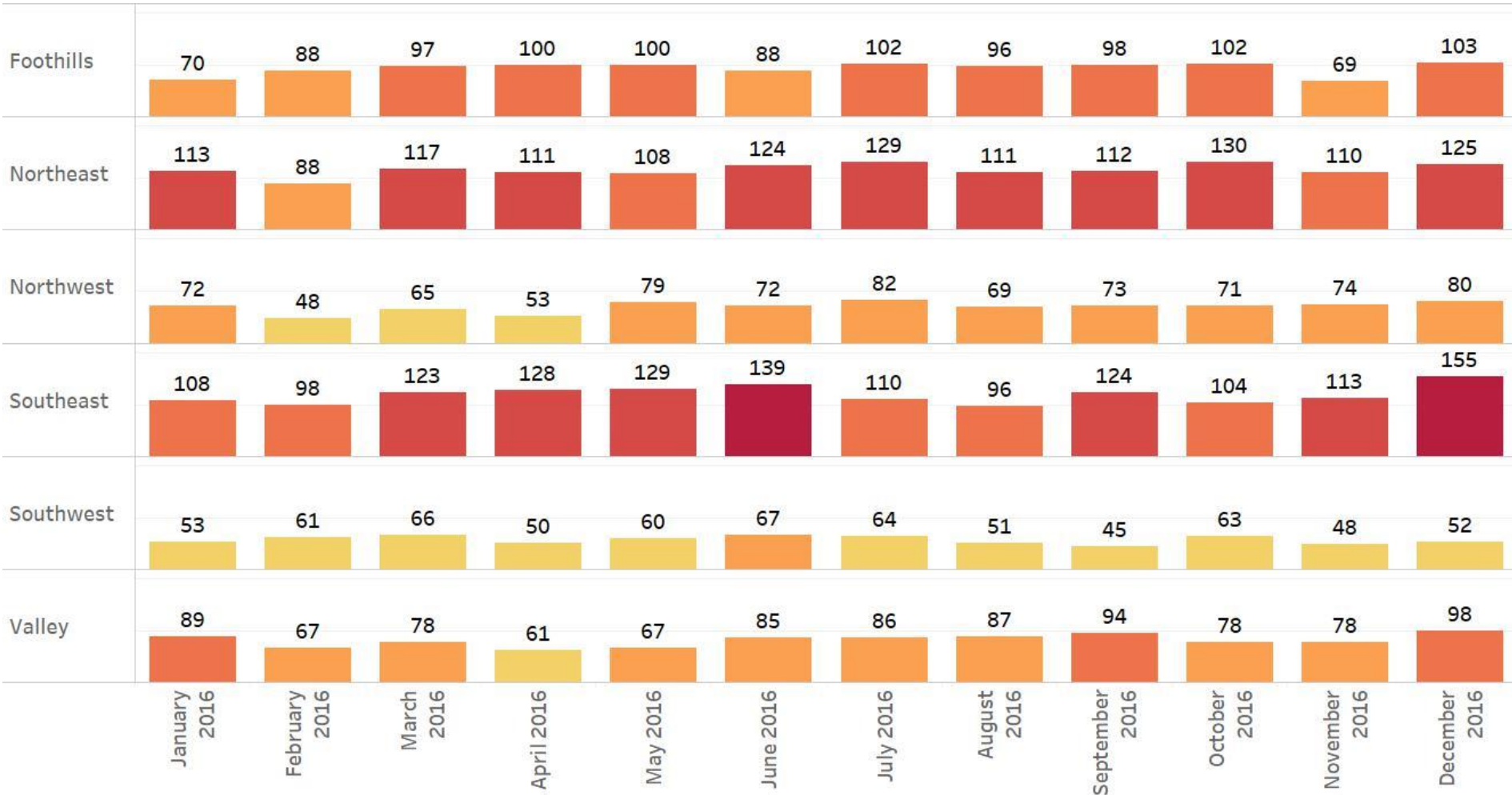
Policy Question	Data Questions	Practice & Policy Questions	Political Questions
<p>How Do We Minimize Police Use Of Force With People Living With Mental Illness?</p>	<ul style="list-style-type: none"> • How many calls for service are related to people living with mental illness? • What are the demographics and other characteristics of the individuals with mental illness encountered by the police? • How was the encounter resolved? • Did the encounter result in the use of force? 	<ul style="list-style-type: none"> • How do we learn the important lessons after difficult incidents? • How do we train police officers to handle encounters with people living with mental illness? • How do we improve the collaboration between the police and mental health system? • How do we make sure that enough money is available to address the issue we face? 	<ul style="list-style-type: none"> • Who has the power to influence communities to take better care of people living with mental illness? • Who can change how funding resources are allocated? • Who has the influence to make sure that families, police, mental health providers, and others to work together?

The Number Of APD's CIT-Related CAD Calls Has Increased 60.4% Since 2010. It Is Very Likely Those Calls Will Continue To Increase

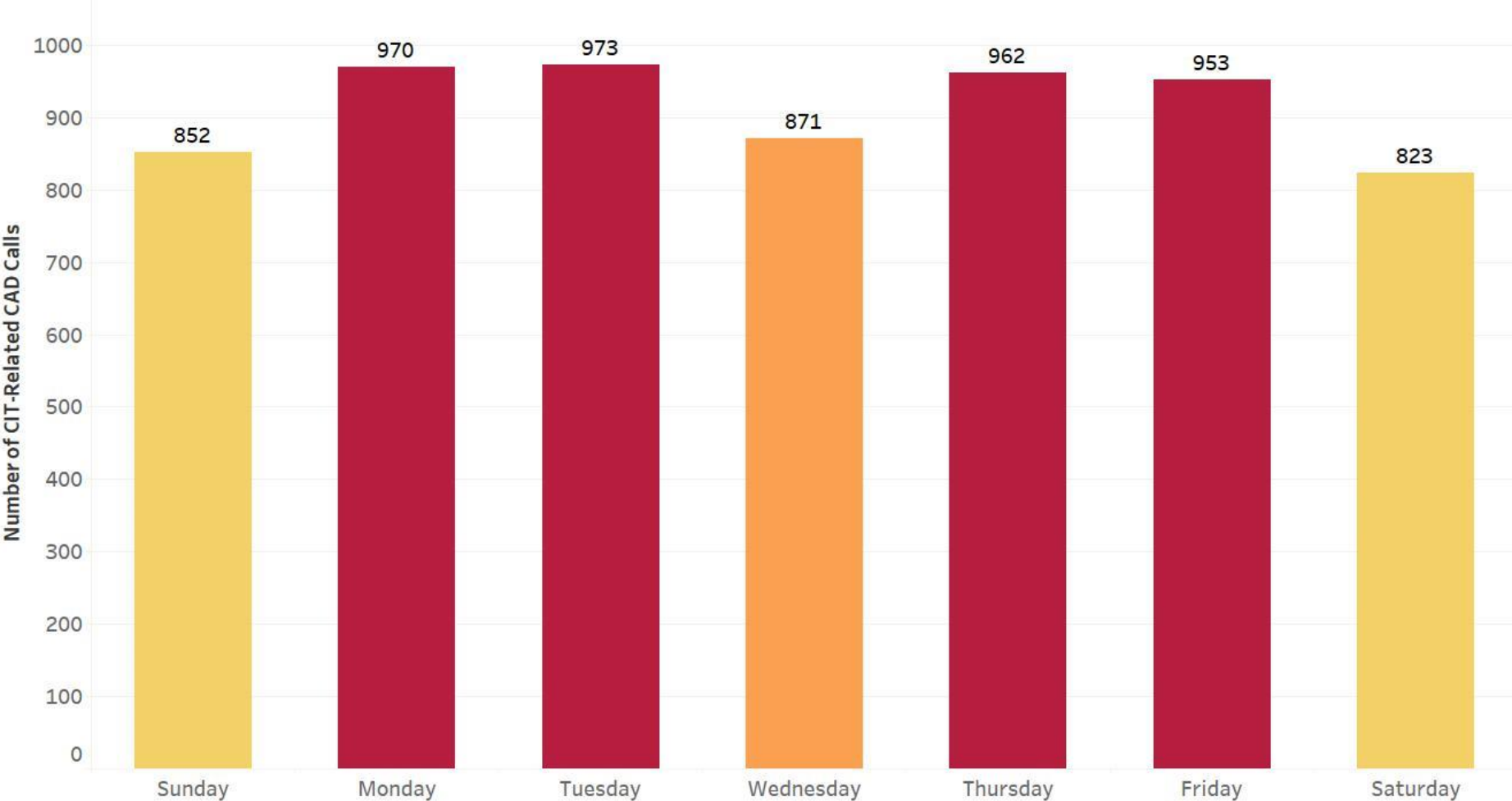


APD CAD Calls All Priorities

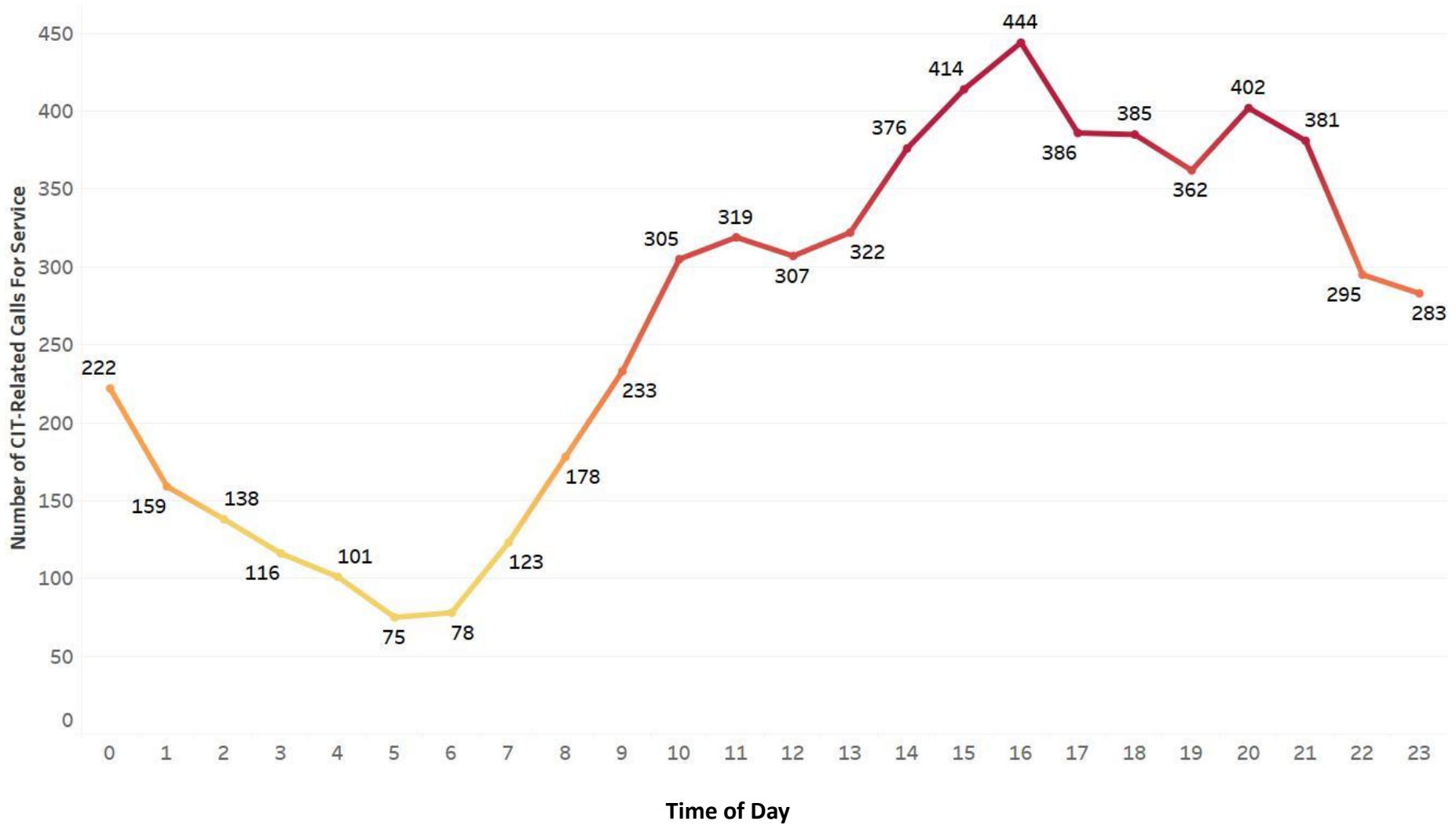
How CIT-Related CAD Calls In 2016 Varied By Area Command And By Month



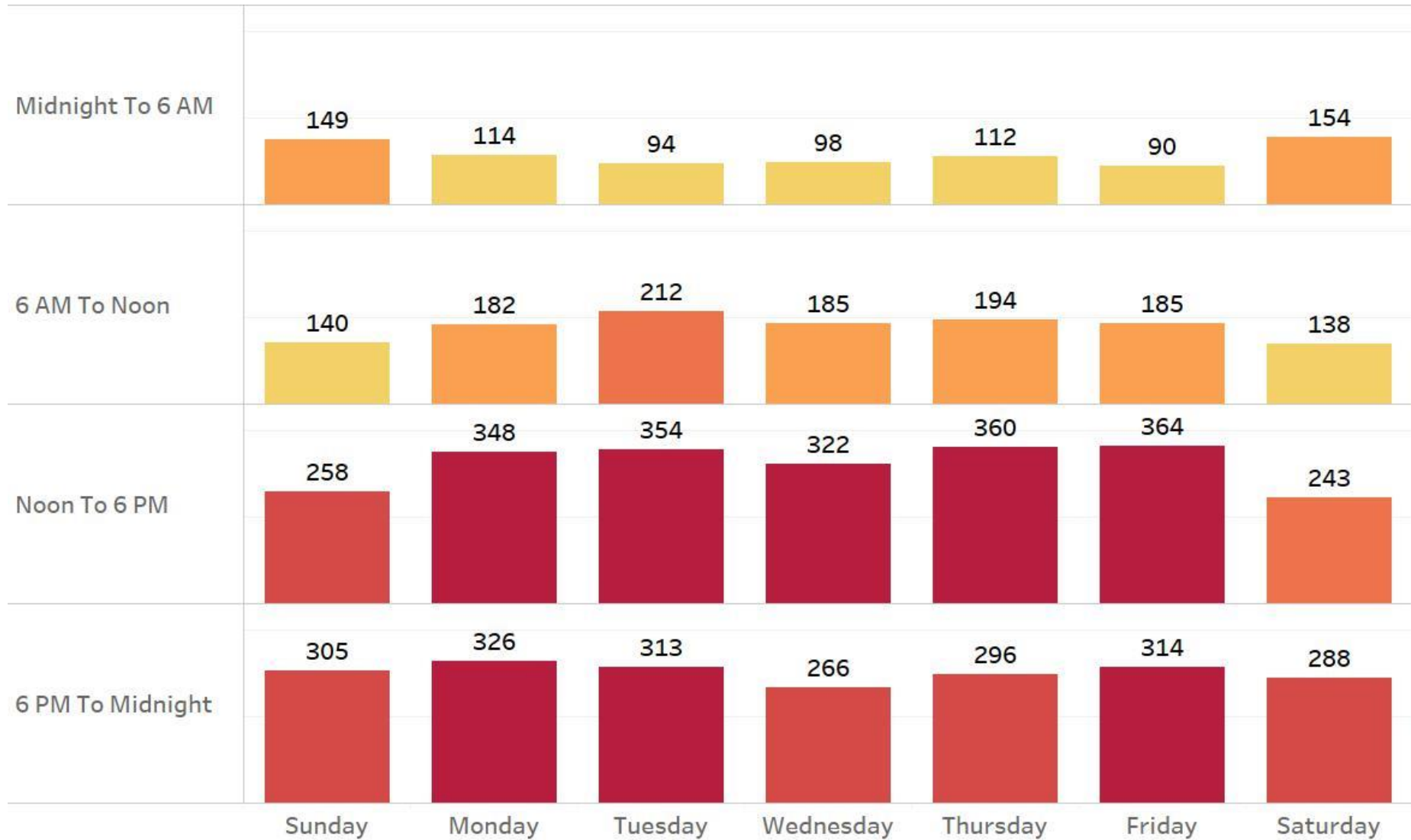
How CIT-Related CAD Calls In 2016 Changed By Day Of The Week



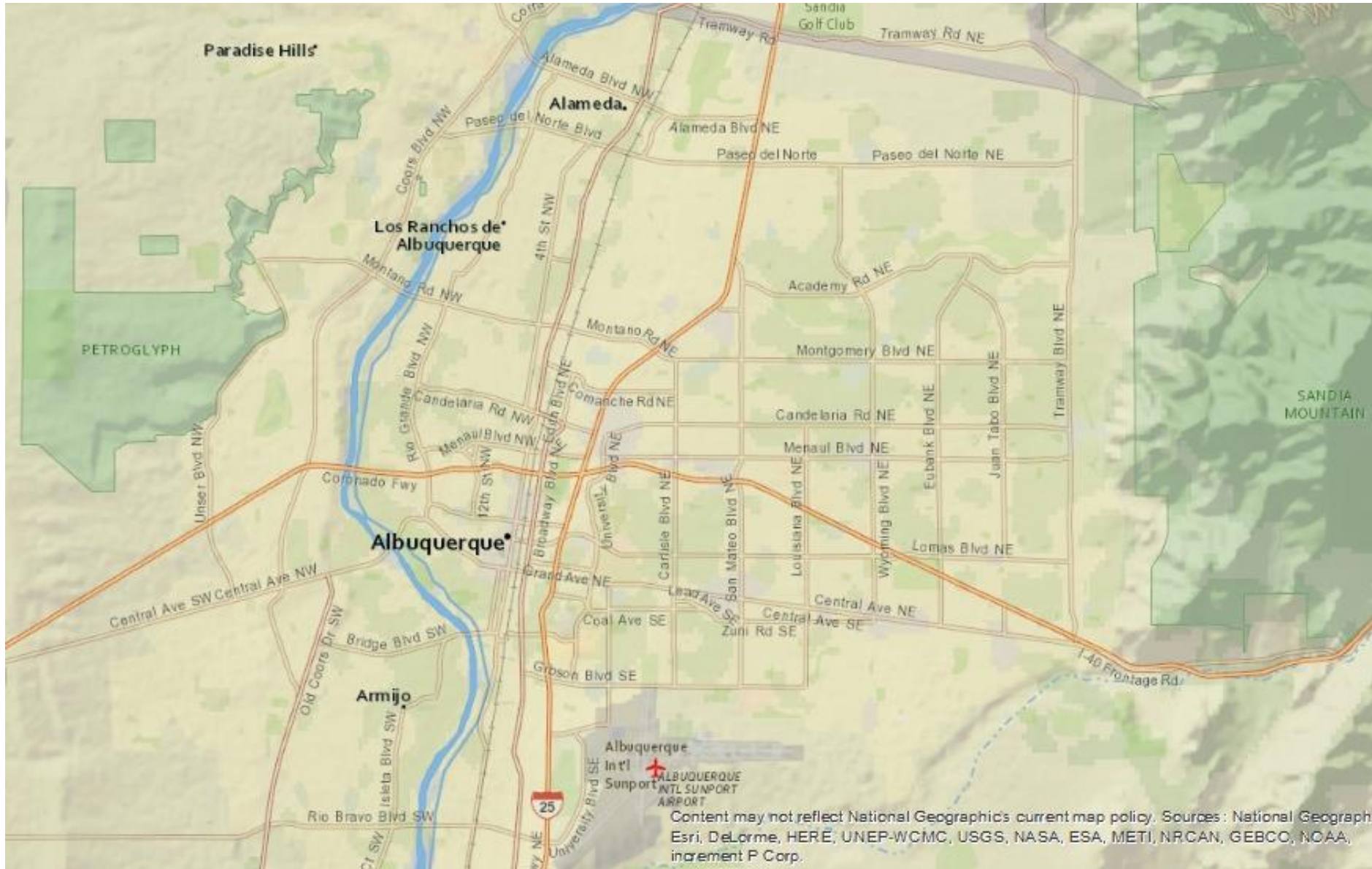
How CIT-Related CAD Calls In 2016 Changed By Time Of Day



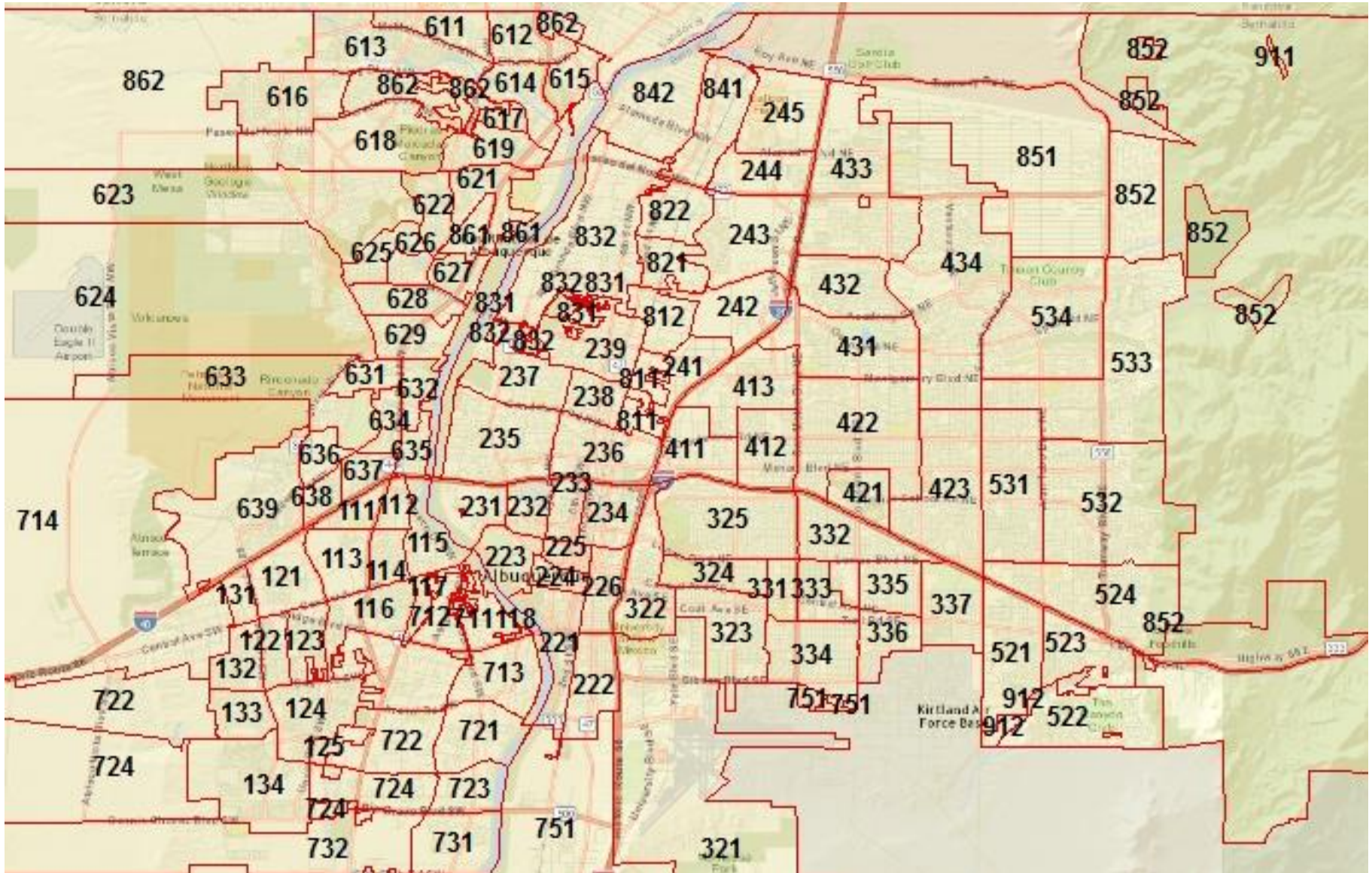
How CIT-Related CAD Calls In 2016 Changed By Time And By Day



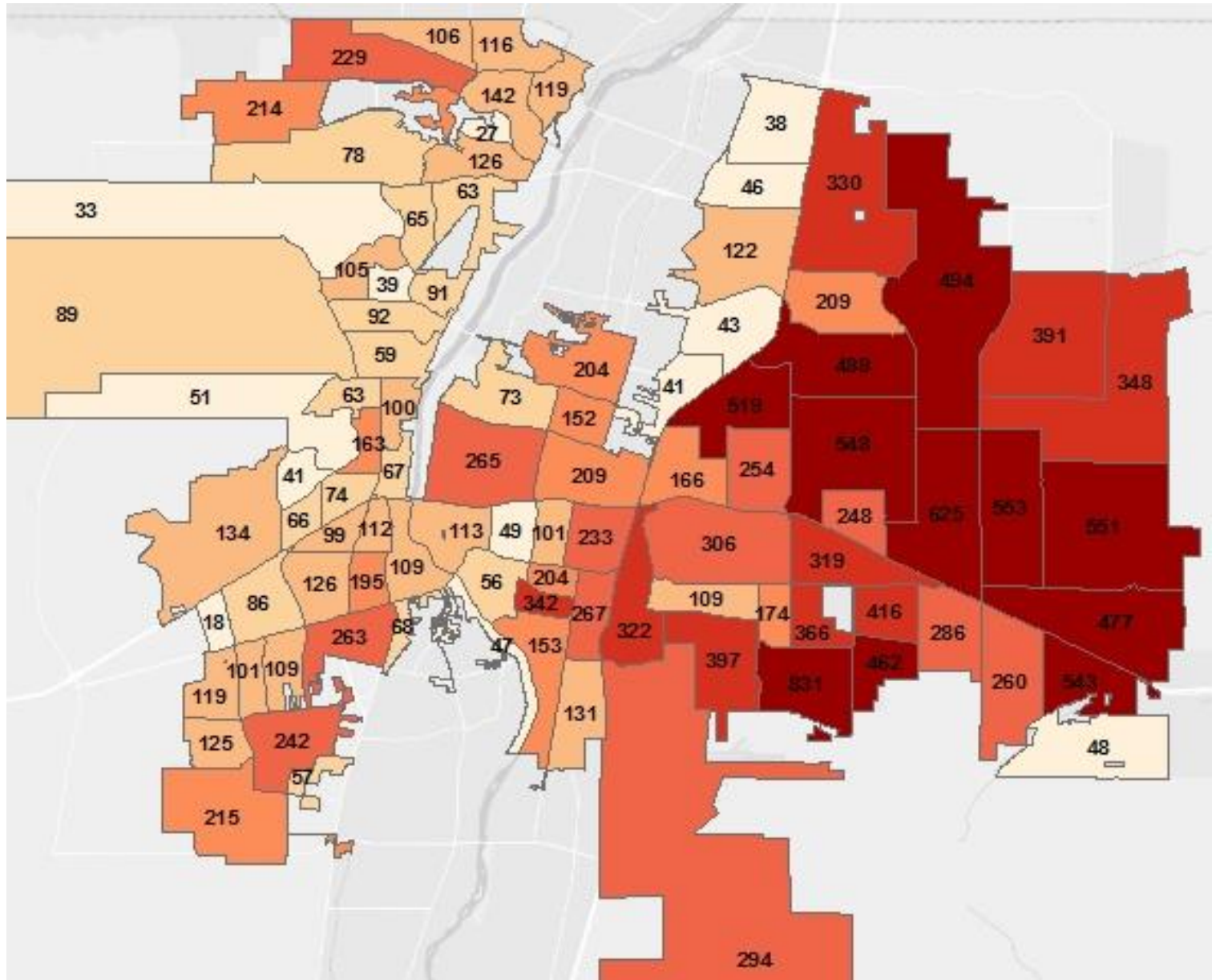
Our Community



APD And BCSO Beats

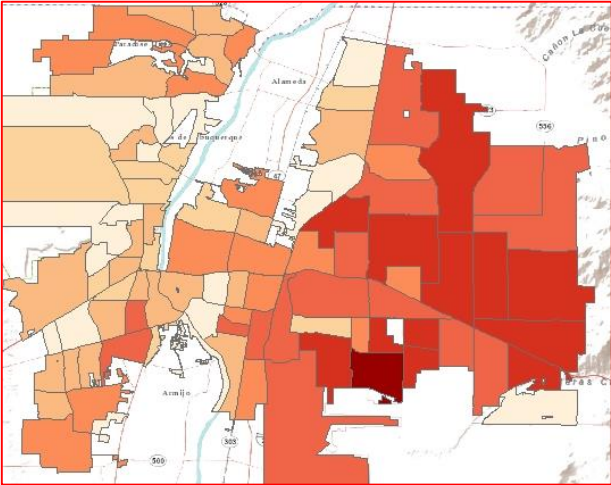


APD Field Officers Filed Almost 19,000 CIT-Related ARS Reports Between 2010 and 2016 (Number of Reports By Beat)

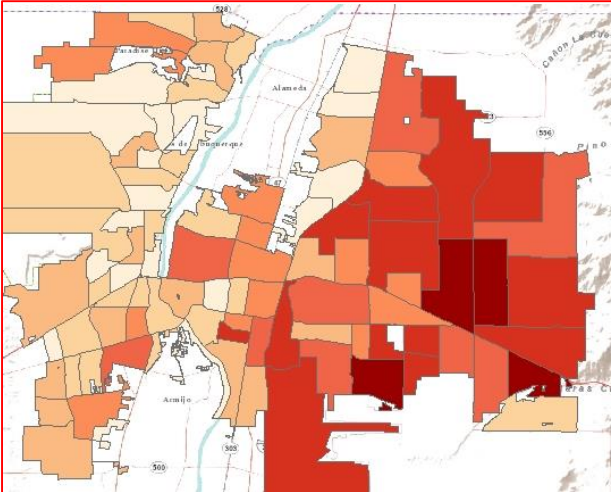


How APD Field Officers' CIT-Related ARS Reports Have Changed By Beat Over Time From 2014 To 2016

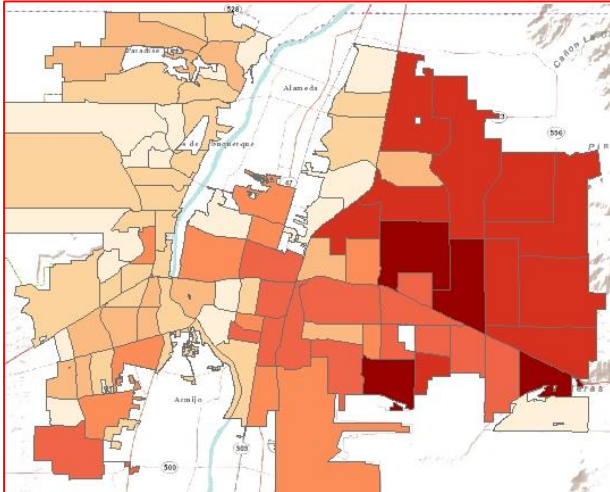
3,484 CIT-Related Field Reports In 2014



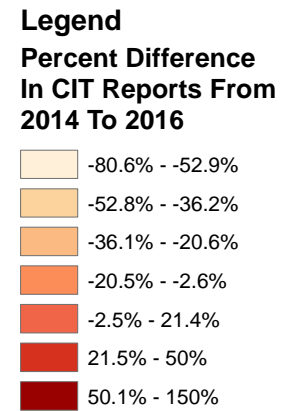
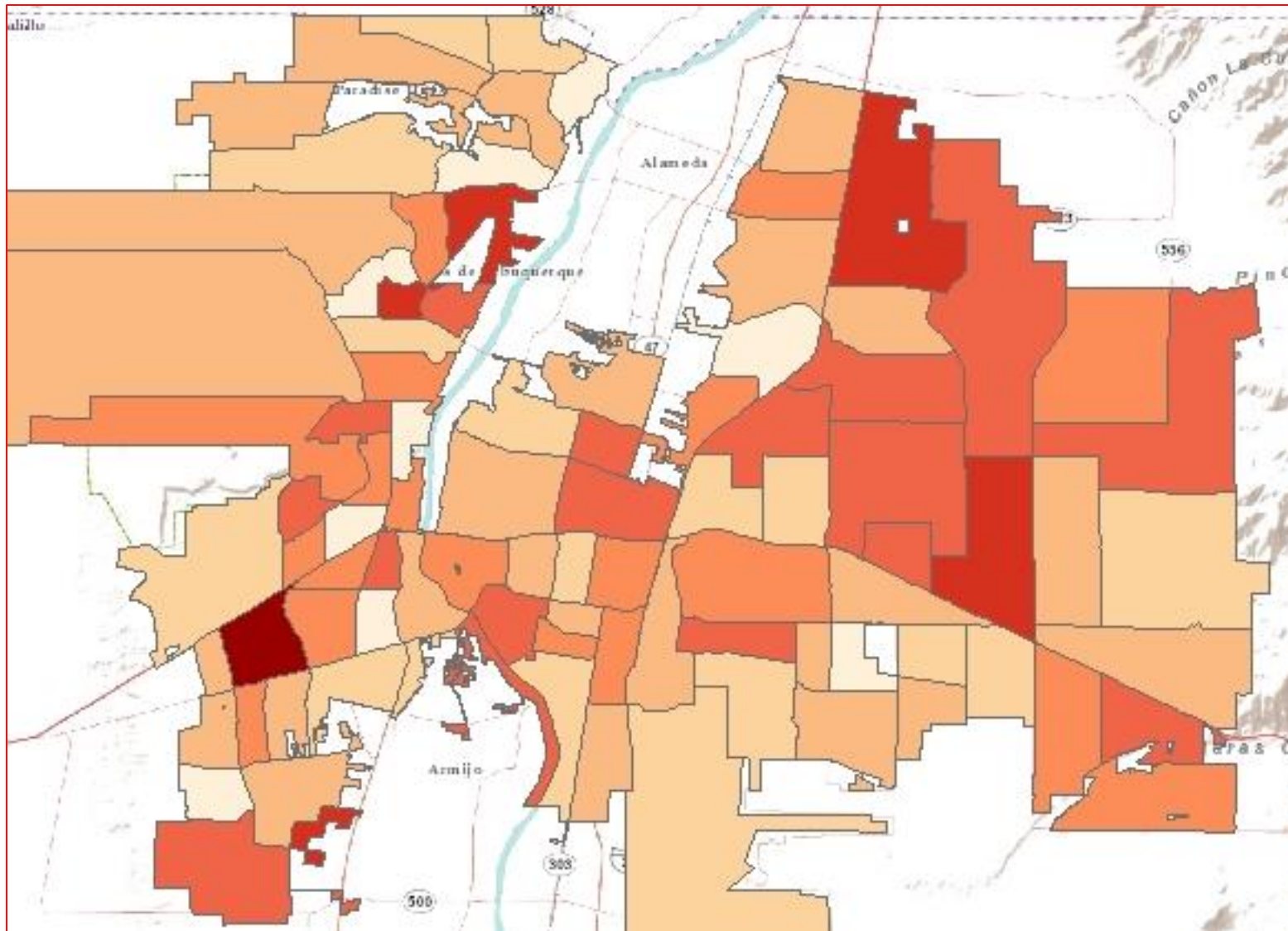
3,259 CIT-Related Field Reports In 2015



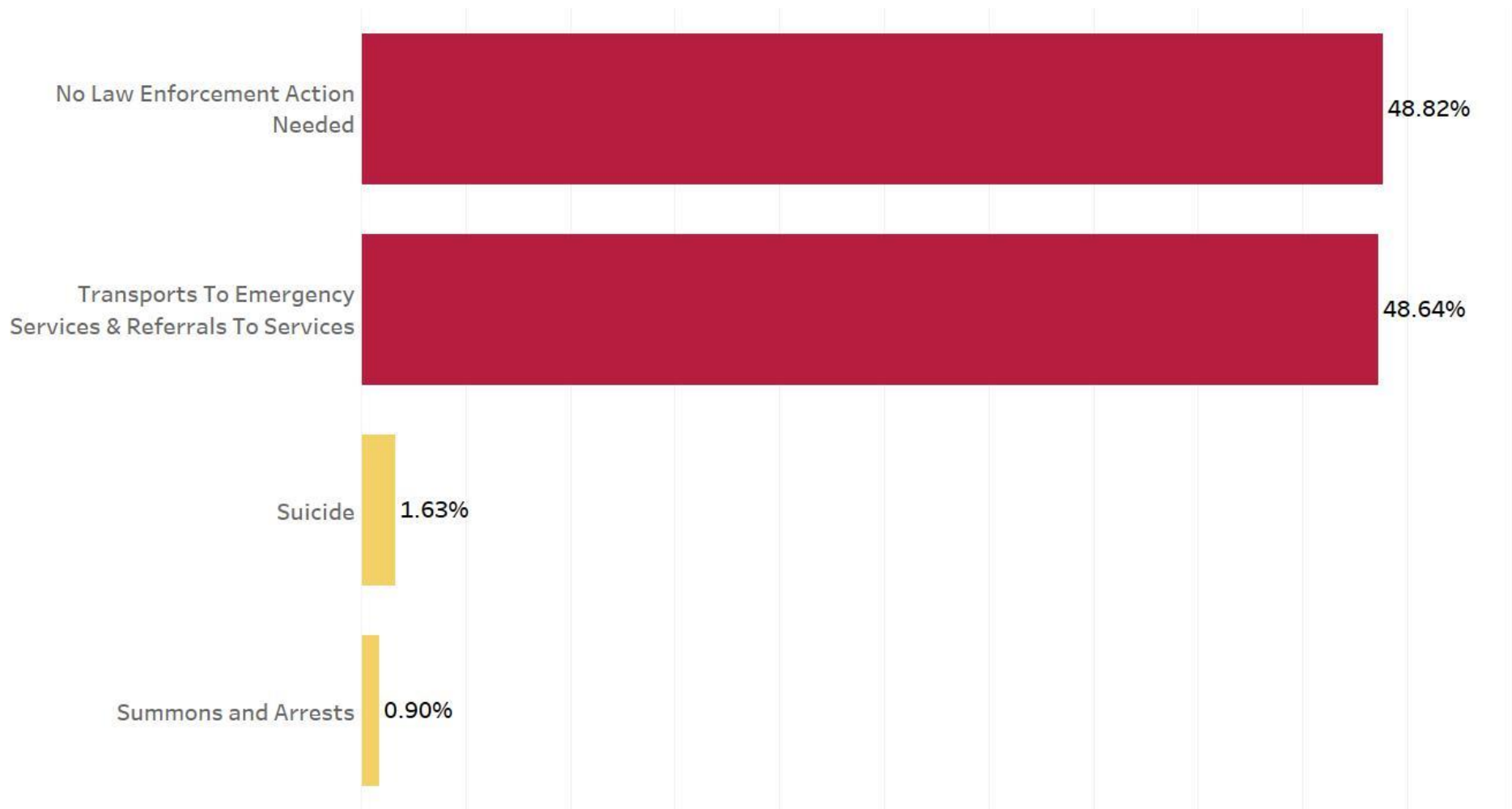
2,730 CIT-Related Field Reports In 2016



The Change In CIT Reports By Beat From 2014 To 2016

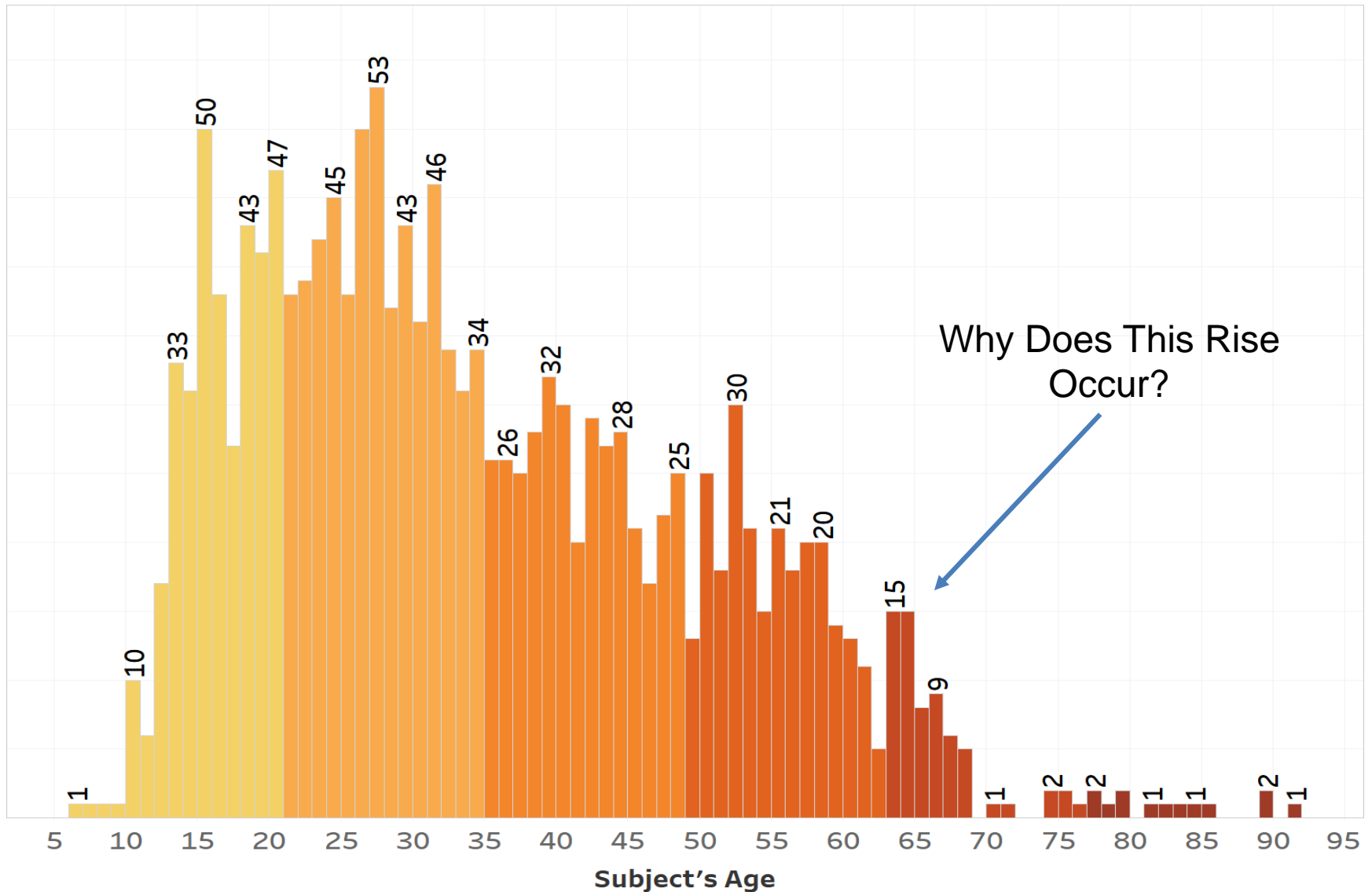


The Disposition Of 553 CIT-Related CAD Calls In March 2017



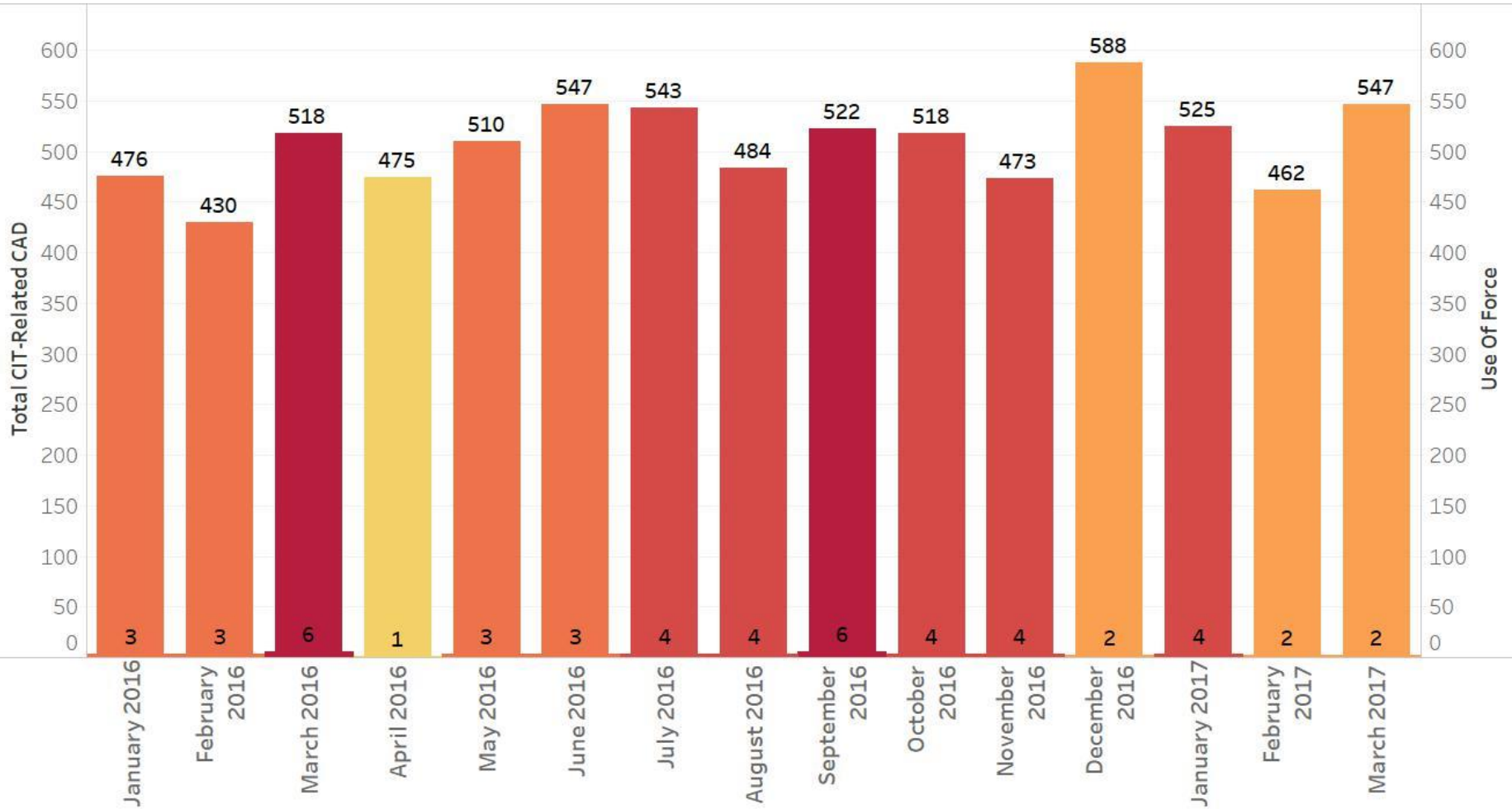
Preliminary Data; Analysis Still In Process

Age By Transport To Hospitals Data For The 1,606 CIT-Related Incidents Reported By Field Officers From January To October, 2016



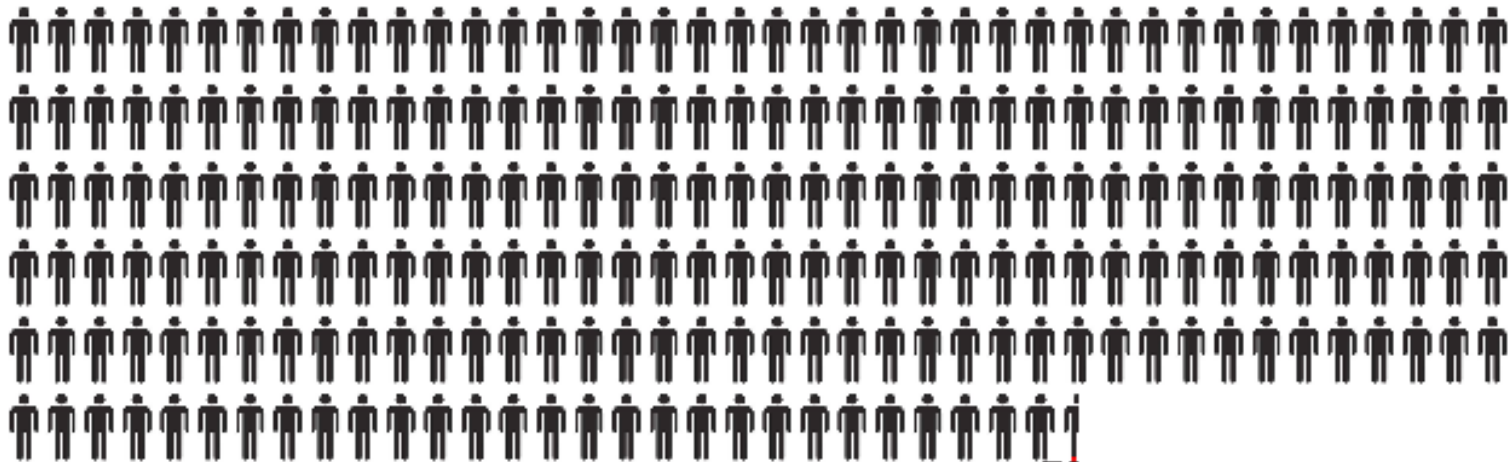
Note: Cases do not sum to 1,606 because some cases did not include age data.

APD Field Officers Use Of Force In CIT-Related CAD Calls From January 2016 To March, 2017



All Calls For Service Vs. Use Of Force Incidents

August 2016 To January 2017




USE OF FORCE INCIDENTS IN IMR 5 REPORTING PERIOD (248):

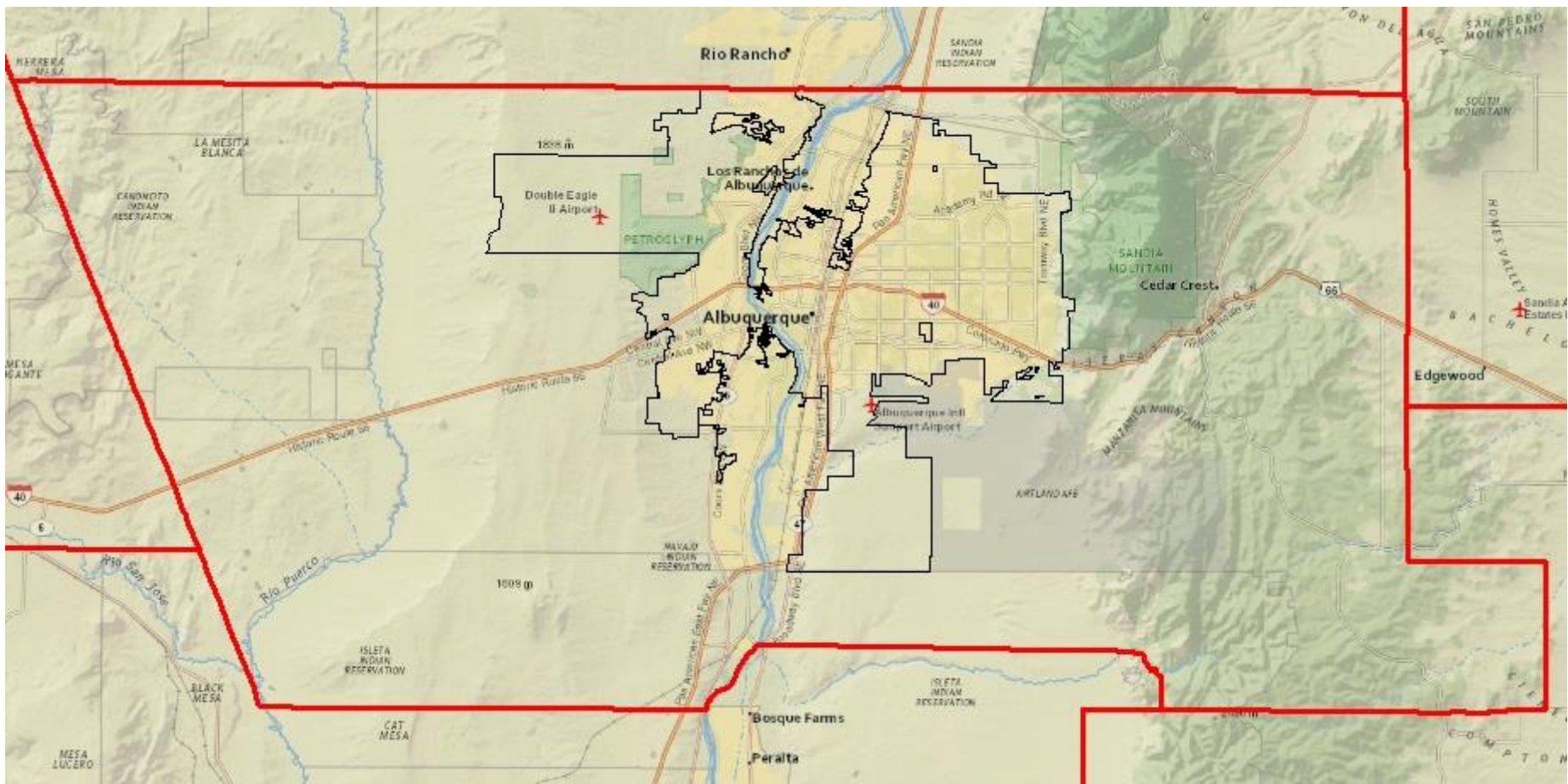
.1% (ONE TENTH OF ONE PERCENT) OF 227,619 CALLS FOR SERVICE INVOLVED ANY USE OF FORCE

SERIOUS USE OF FORCE INCIDENTS IN IMR 5 REPORTING PERIOD (34):

.015% (15 THOUSANDTHS OF ONE PERCENT) OF 227,619 CALLS FOR SERVICE

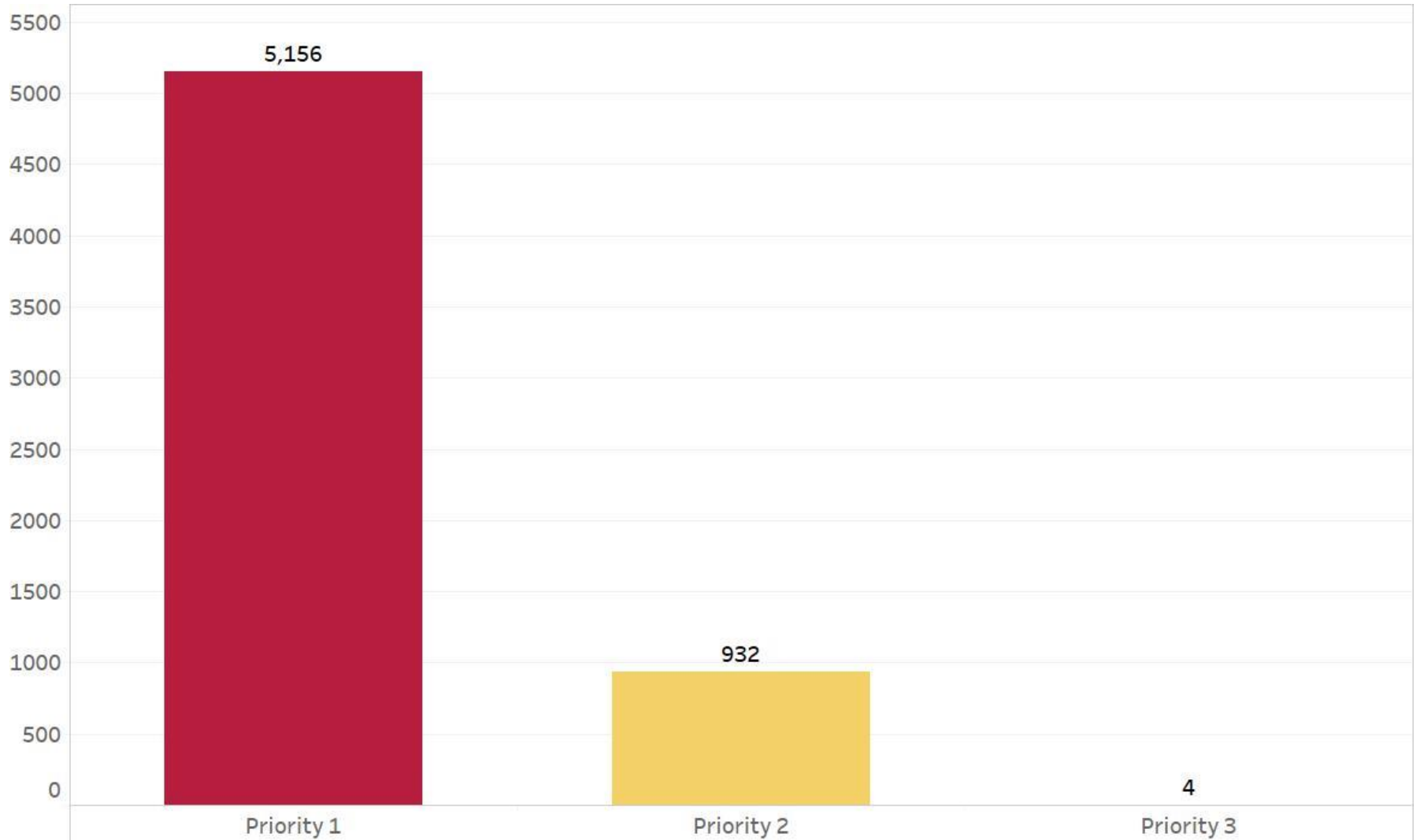
 = 1,000 CALLS FOR SERVICE

Bernalillo County and City Of Albuquerque Boundaries



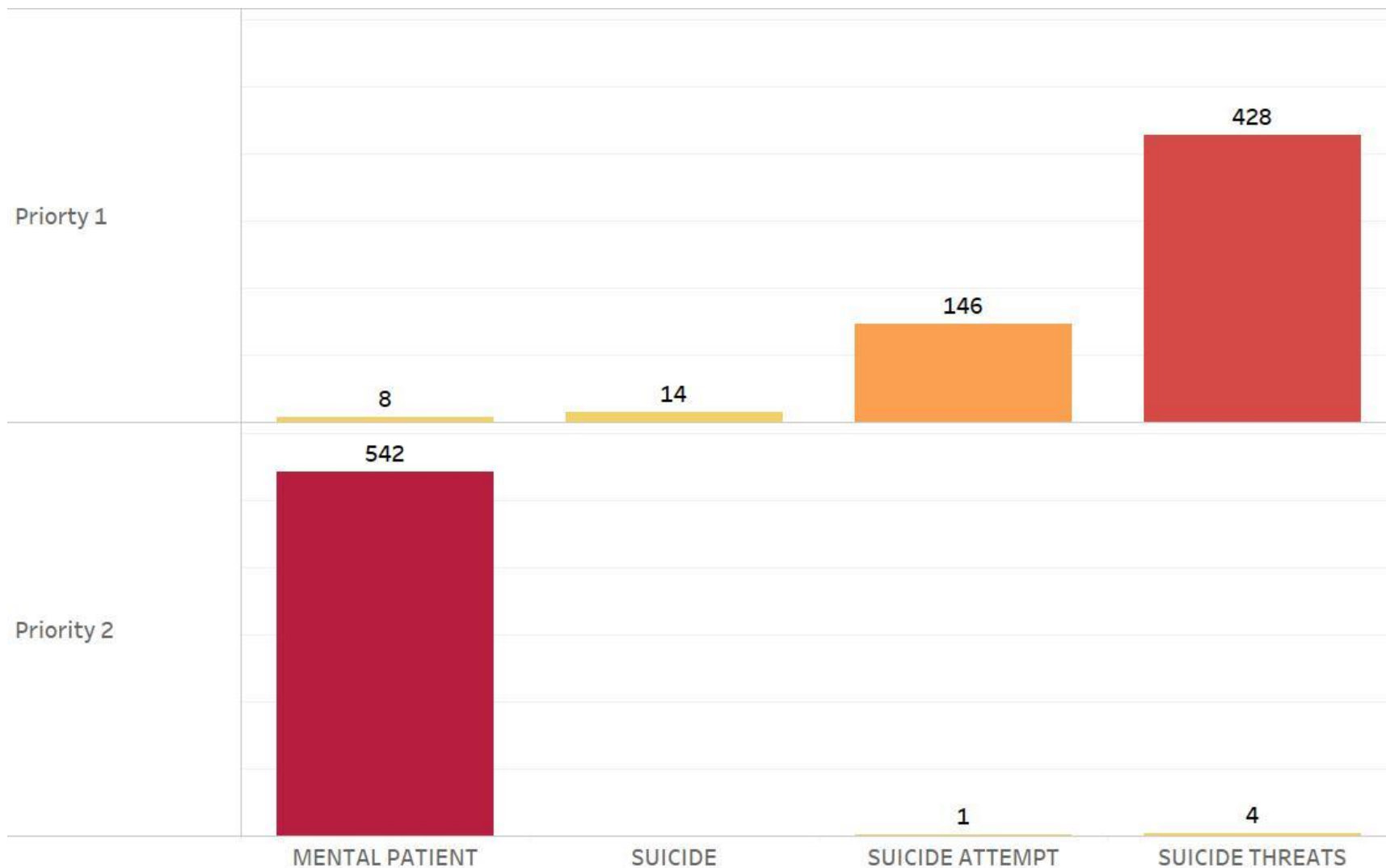
Source: <https://www.cabq.gov/gis/geographic-information-systems-data>

2016 CIT-Related CAD Calls For The Albuquerque Police Department By Priority

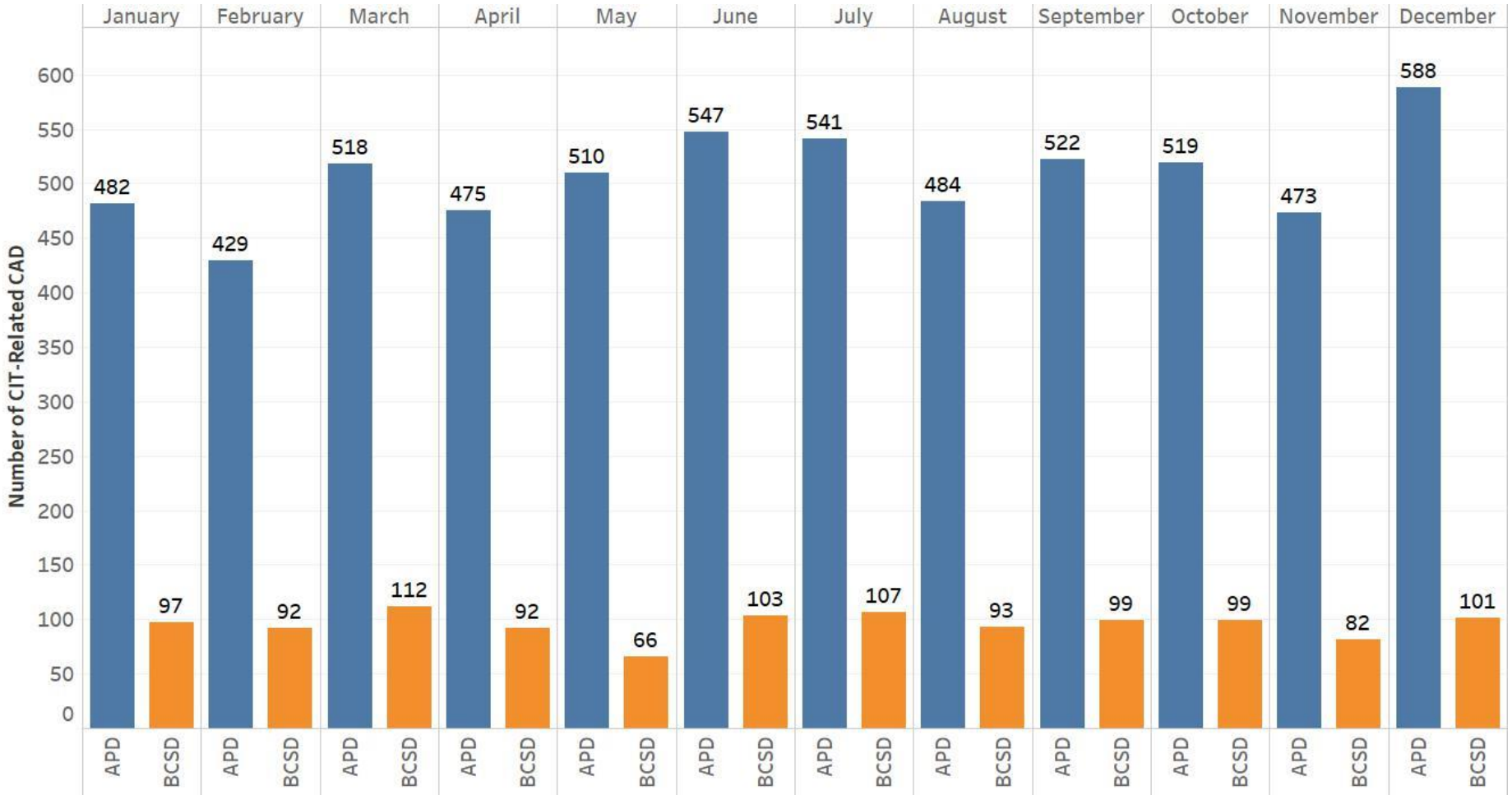


Source: APD CIU 3.10.17

2016 CIT-Related CAD Calls For Bernalillo County Sheriff's Department Priority 1 & 2 Calls By Call Description

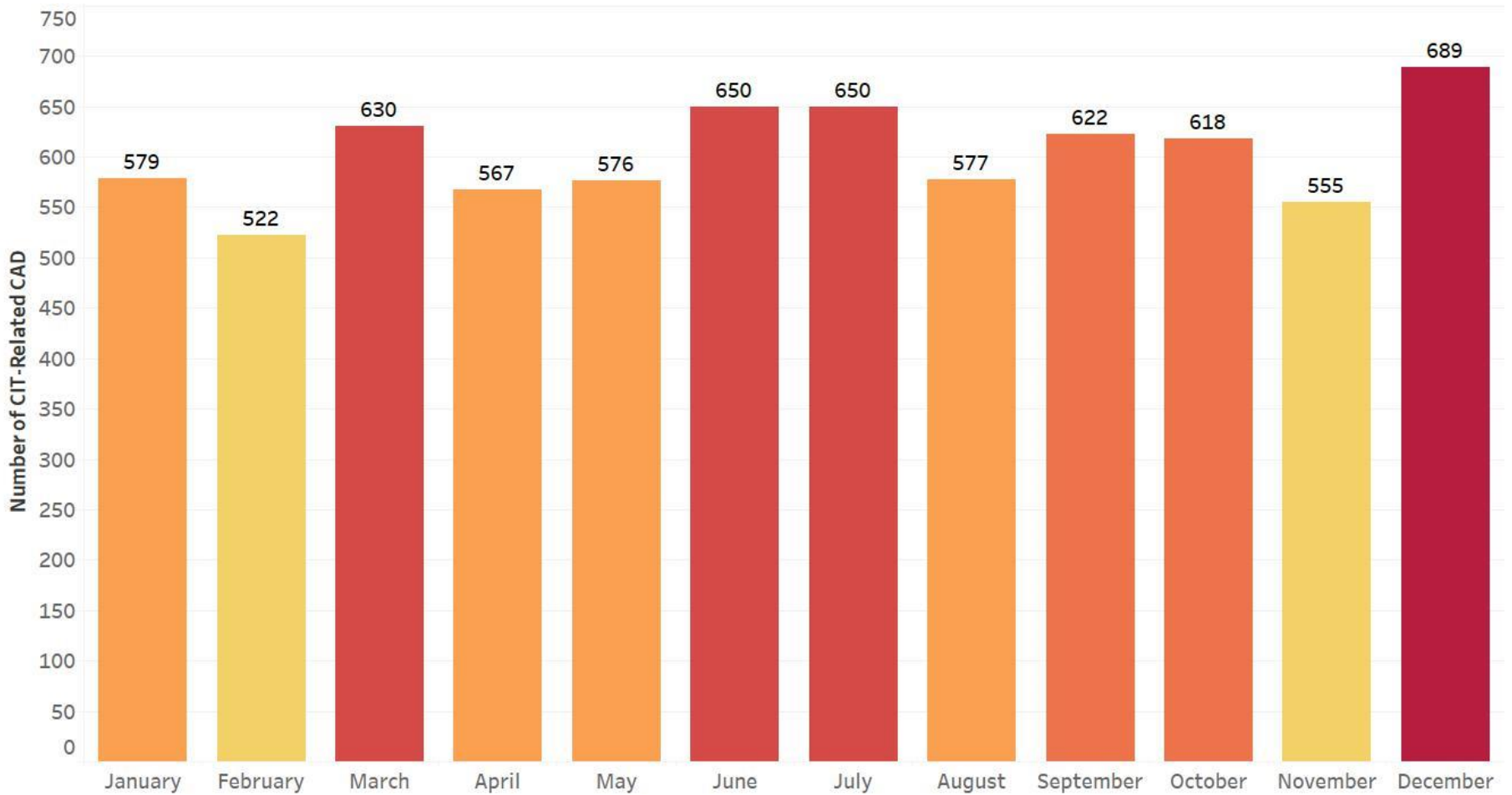


2016 CAD Calls For Albuquerque Police Department And Bernalillo County Sheriff's Department Priority 1 & 2 Calls By Month



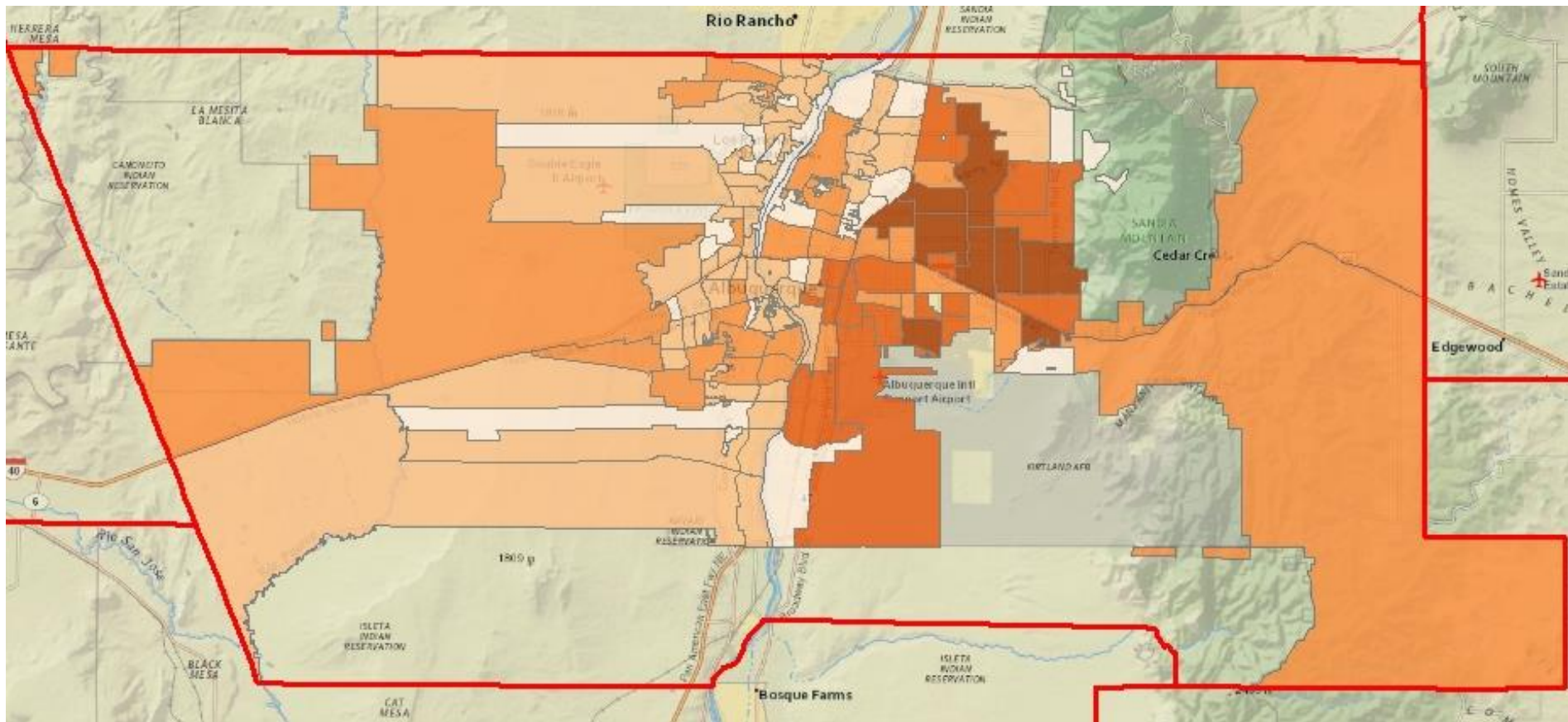
Sources: APD CIU 3.10.17; BCSD 3.28.17

Combined, APD And BCSD Responded To 7,235 Priority 1 & 2 CIT-Related CAD Calls In 2016



Sources: APD CIU 3.10.17; BCSD 3.28.17

2016 CIT-Related CAD Calls For APD And BCSD Combined By Beat Priority 1 & 2 Calls Only



3 - 19

20 - 42

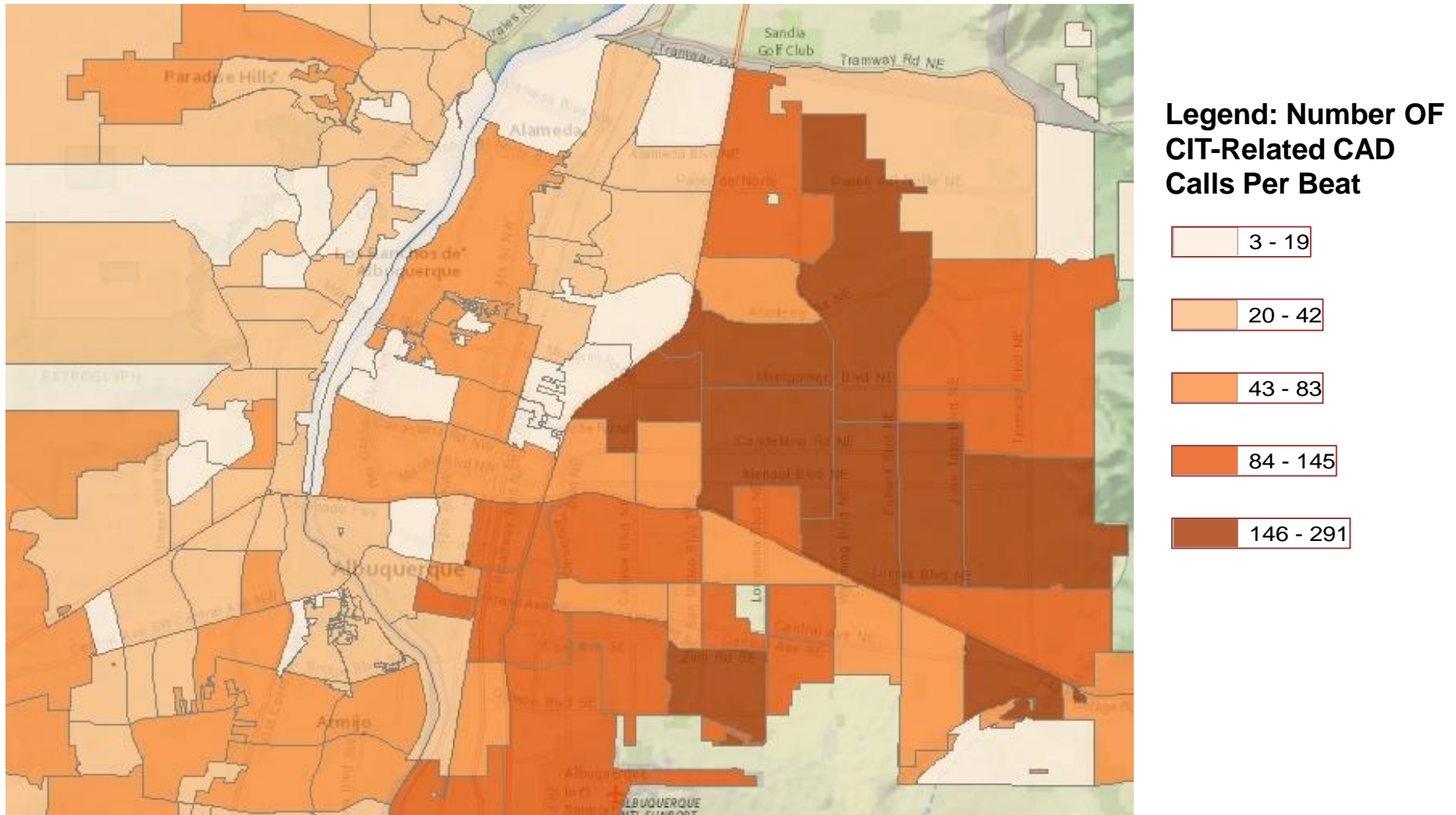
43 - 83

84 - 145

146 - 291

Legend: Number OF CIT-Related CAD Calls Per Beat

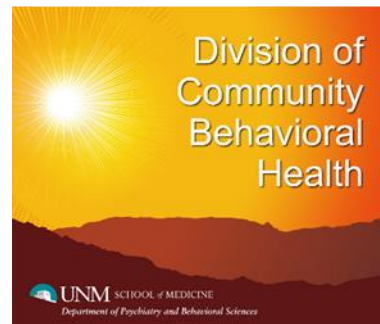
2016 CIT-Related CAD Calls For APD And BCSD Combined By Beat Priority 1 & 2 Calls Only



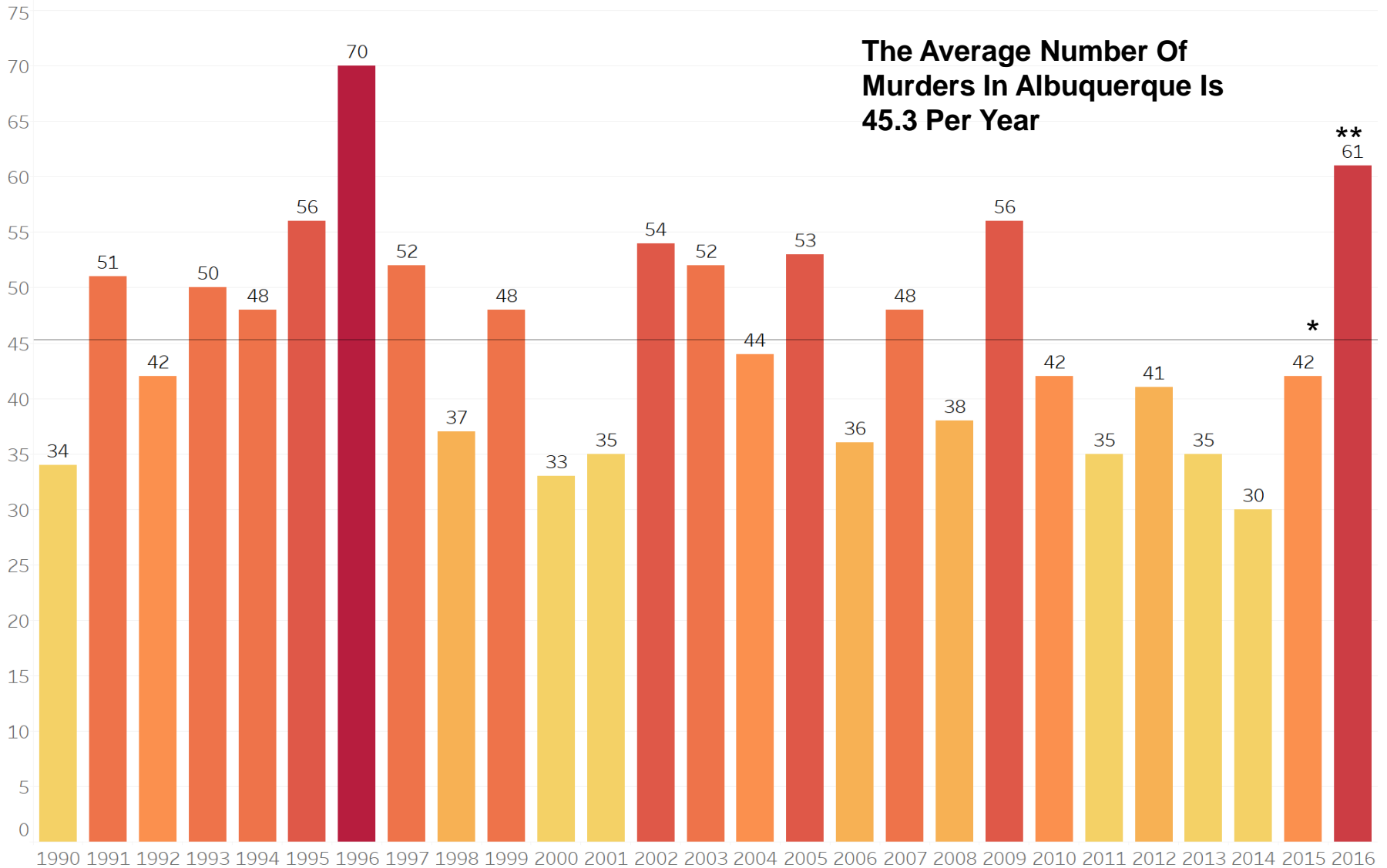
Homicide Rising? Insights From Law Enforcement & Mental Health

Prepared For:
Project ECHO
January 10, 2017

Prepared By:
Sgt. Liz Thomson, Homicide Unit, APD
Peter Winograd, Policy Analyst, Crisis Intervention Unit, APD
Jennifer Earheart, Project Coordinator, CIT ECHO Knowledge
Network
Sarah Masek, Crime Analysis Unit Supervisor, Real Time Crime
Center, APD



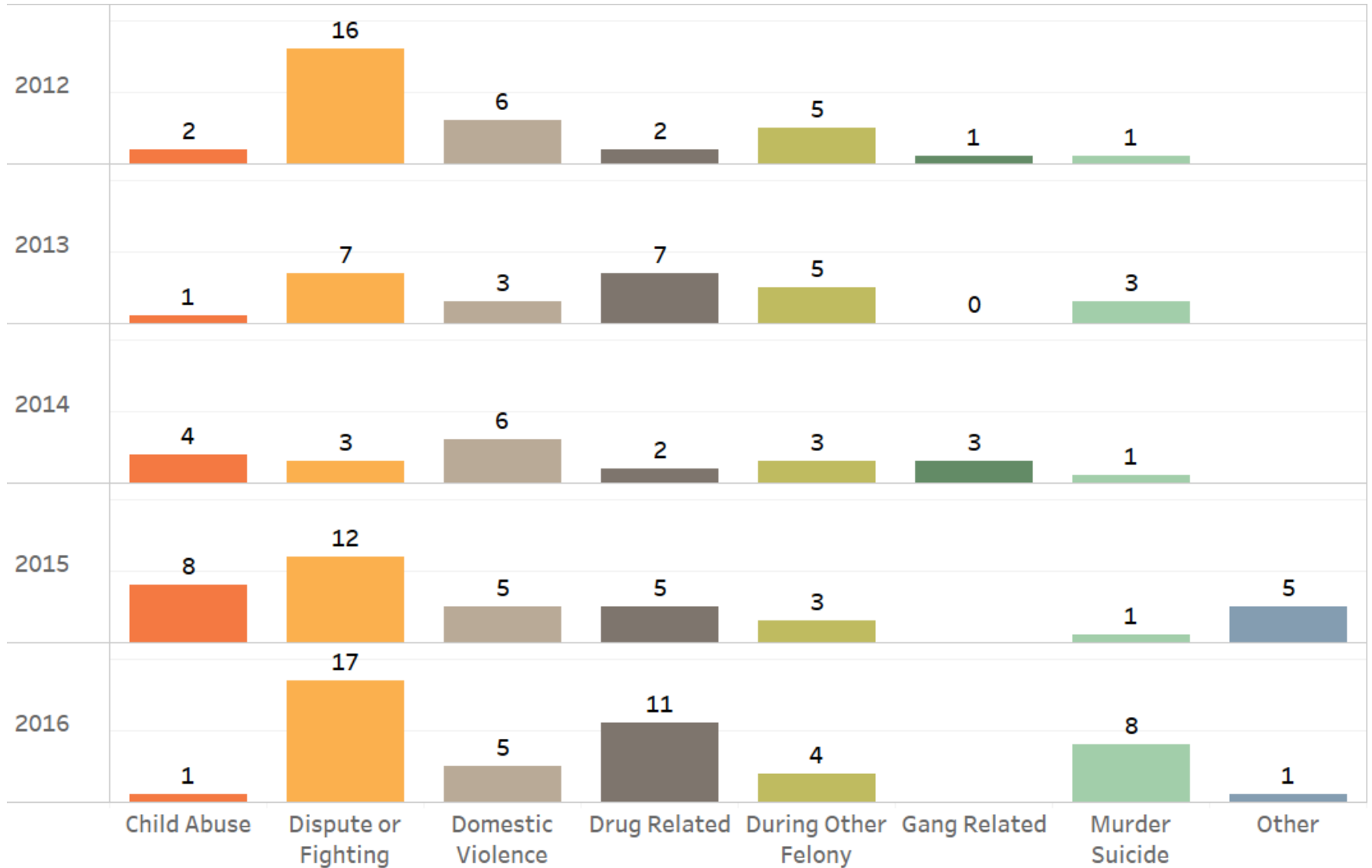
The Number Of Murders In Albuquerque 1990 To 2016



* 2015 FBI UCR Murder Numbers Do Not Include 4 Negligent Homicides

** 2016 Murder Numbers Are Not Official UCR Yet

The Types Of Murders In Albuquerque 2012 To 2016



Source: APD

The Tasks Ahead

- **How Do We Ensure That ECIT Trained Officers Respond To Appropriate Calls For Service?**
- **How Do We Better Help Individuals With Repeated Encounters With Law Enforcement?**
- **How Do We Build Effective Community-Wide Systems Of Support?**