

1716 - Jack point integrity questionable



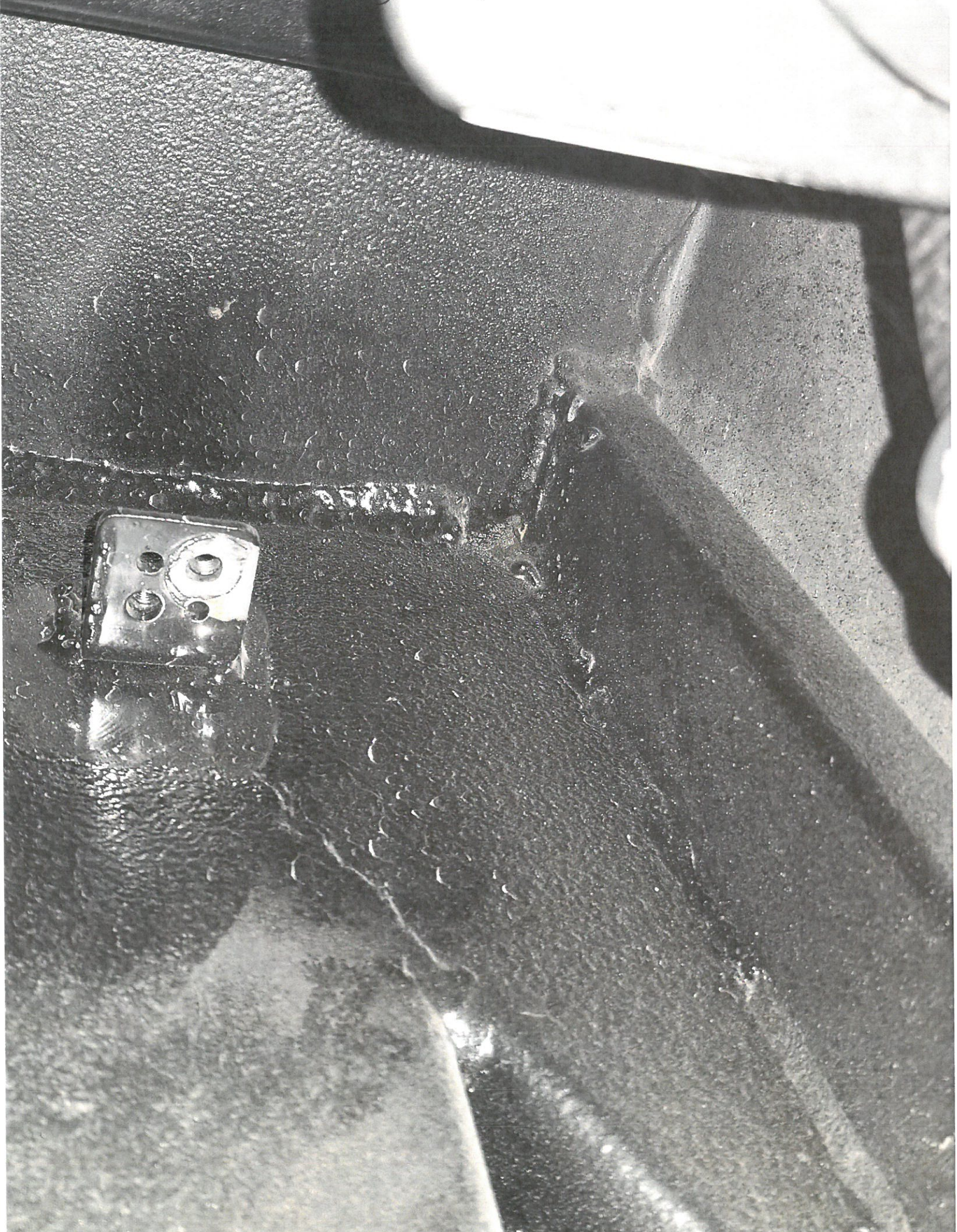


1716 - All bridge plate cross members not welded properly or filled in with welding



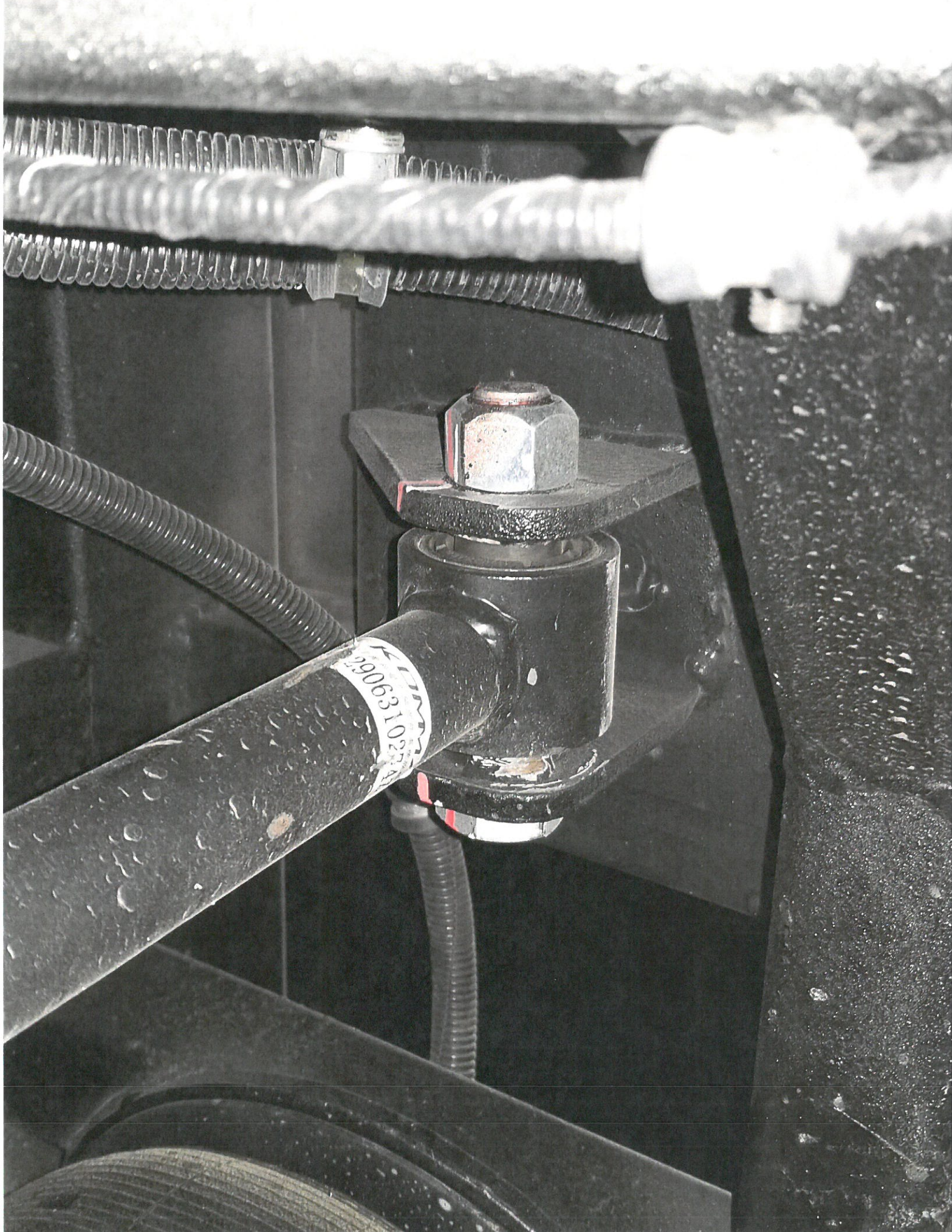


1716 - Front C/S Frame weld missing/not completed





1716-UB sway bar mount weld integrity questionable





1716- Front of joint/bellows welds questionable & rusting





1716 - 8/5 Bridge Plate Crossover missing/incomplete weld





1716- Front cross beam welds incomplete and questionable





1716 - Front of joint cls trim is Falling off and No uniformity with Bus Builds





1716 - rear of joint trim falling off, some have trim pieces some have coating at unit.



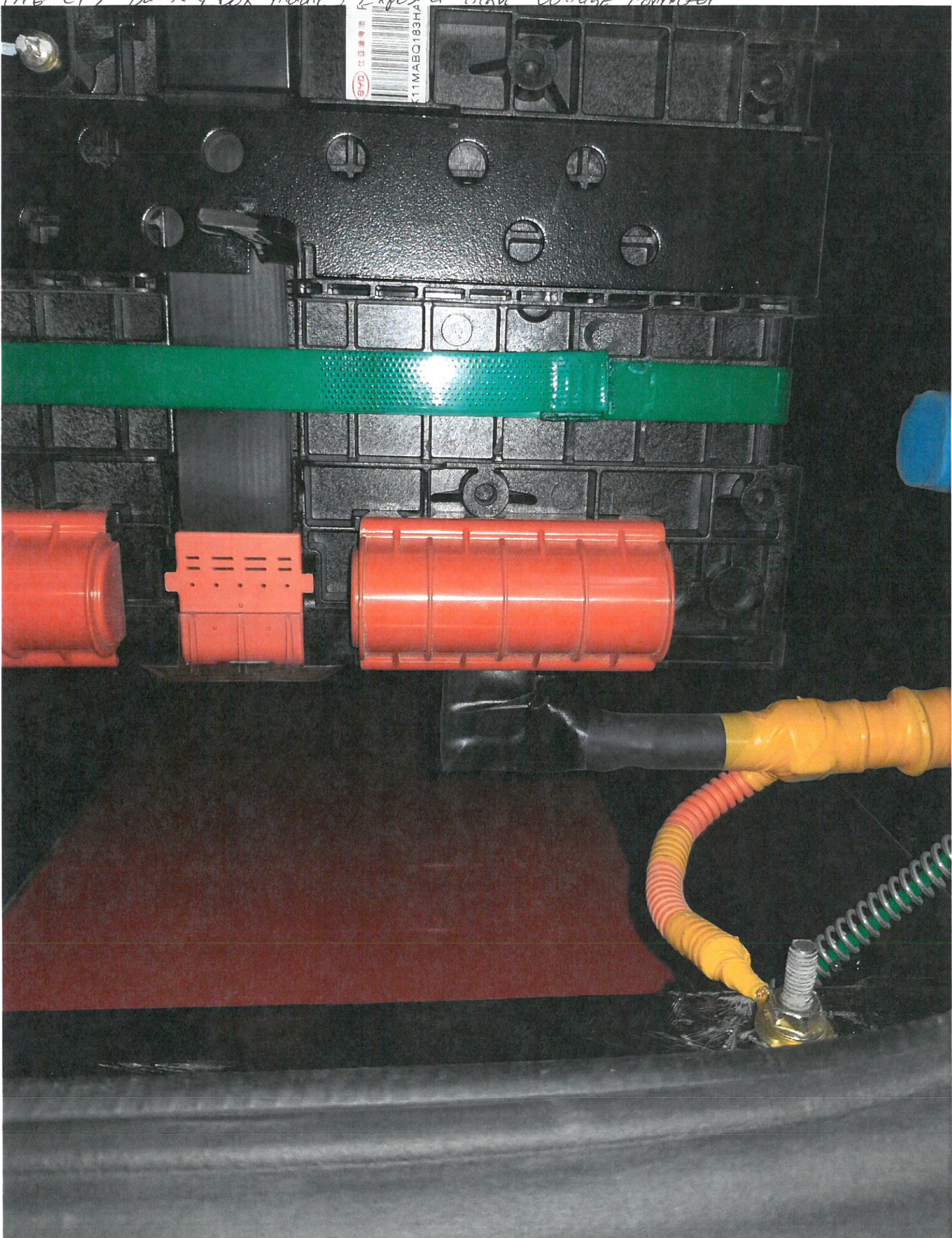


17/6. Rear S/S hole in silicone, poor craftsmanship





1716- C/S Battery Box middle, Exposed High voltage connector









1716- High voltage cables rubbing Frames c13 Engine empty





1716 - High Voltage cables rubbing Frame in Engine Comp



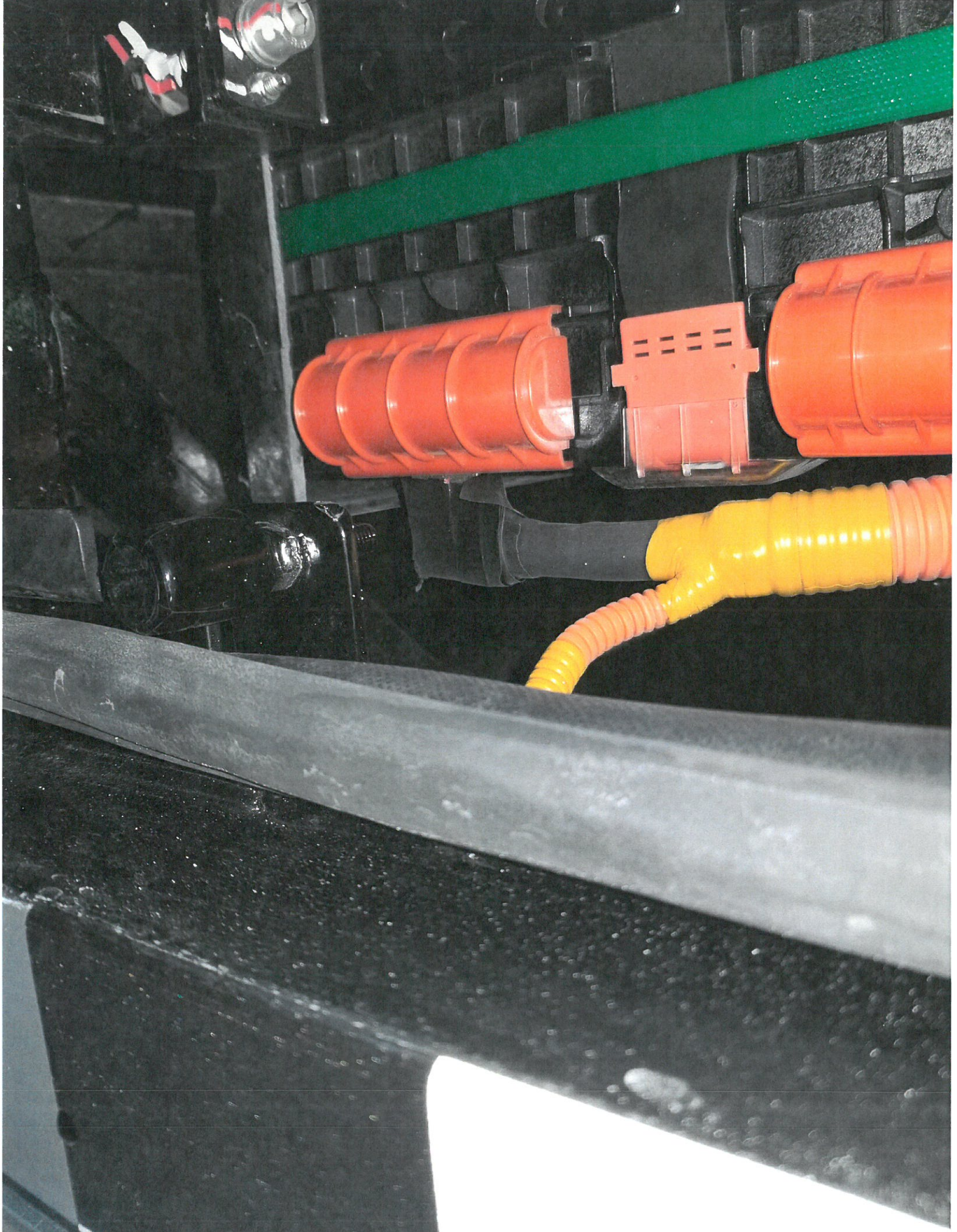


1716 - S/S rear Fire Suppression line rubbing frame





1716 - Exposed High Voltages & Connector Exposed c/s Batt CML





1716-Cables rubbing on Securement brackets





17/L - lines + cables Exposed to Road Debris

