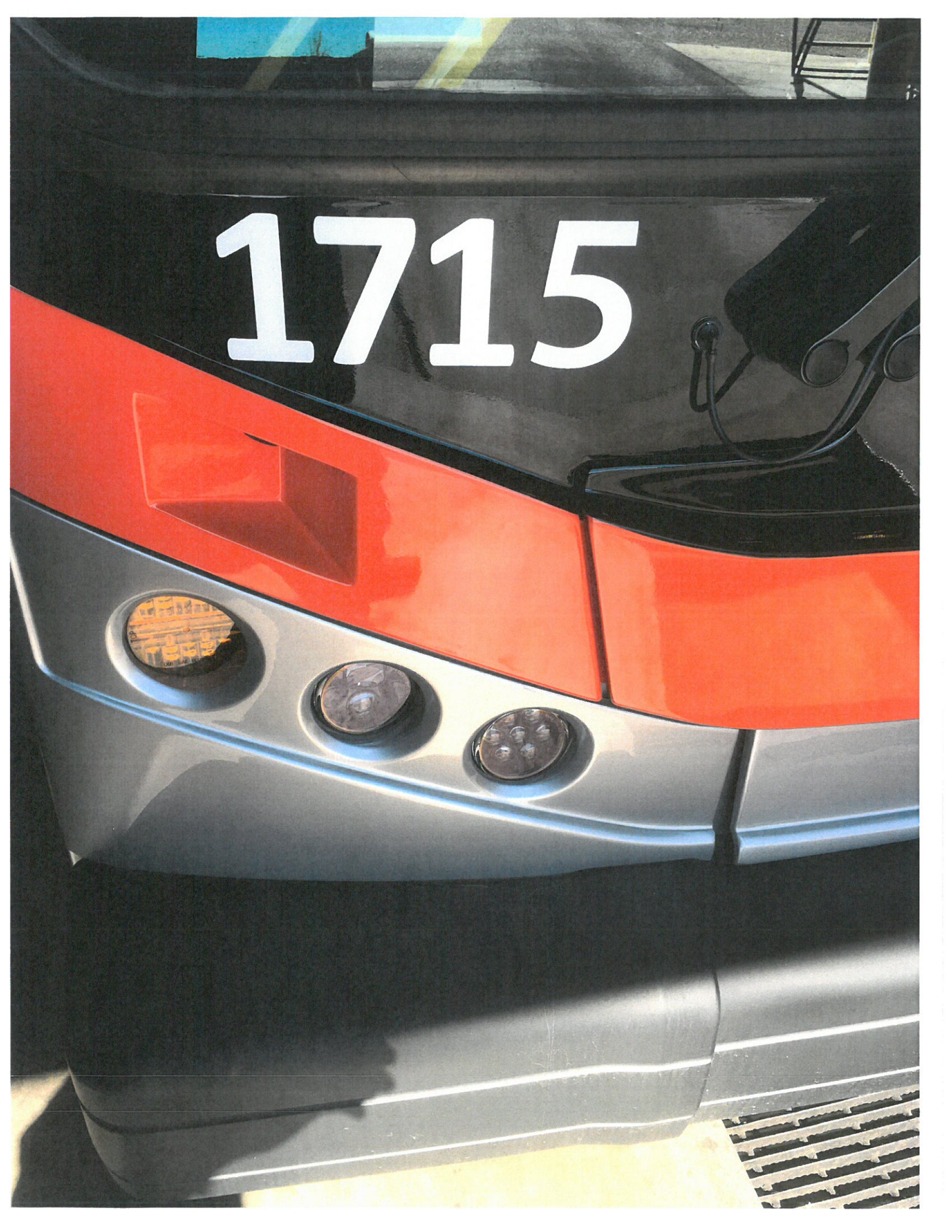


1715



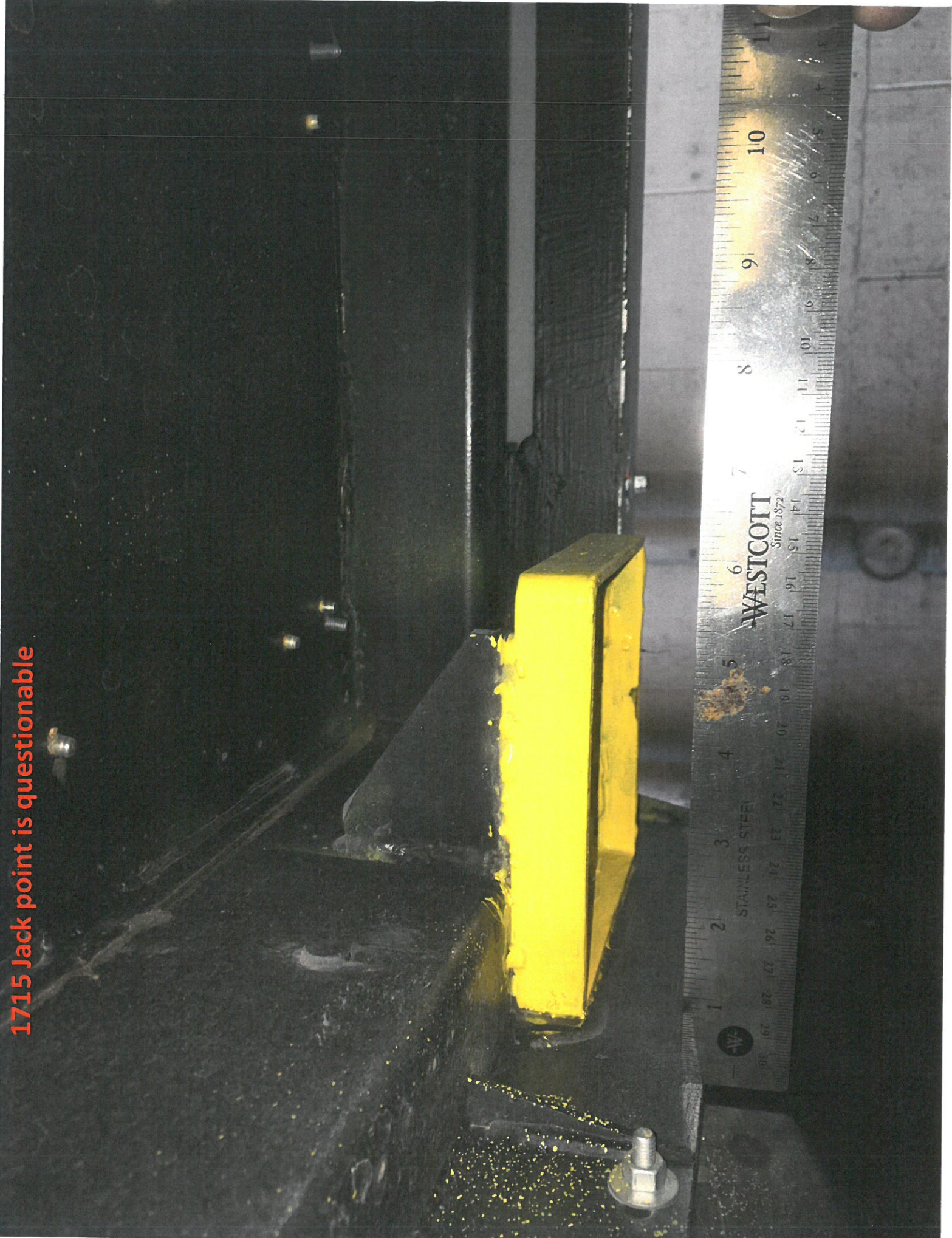
1715 Bridge plate weld incomplete



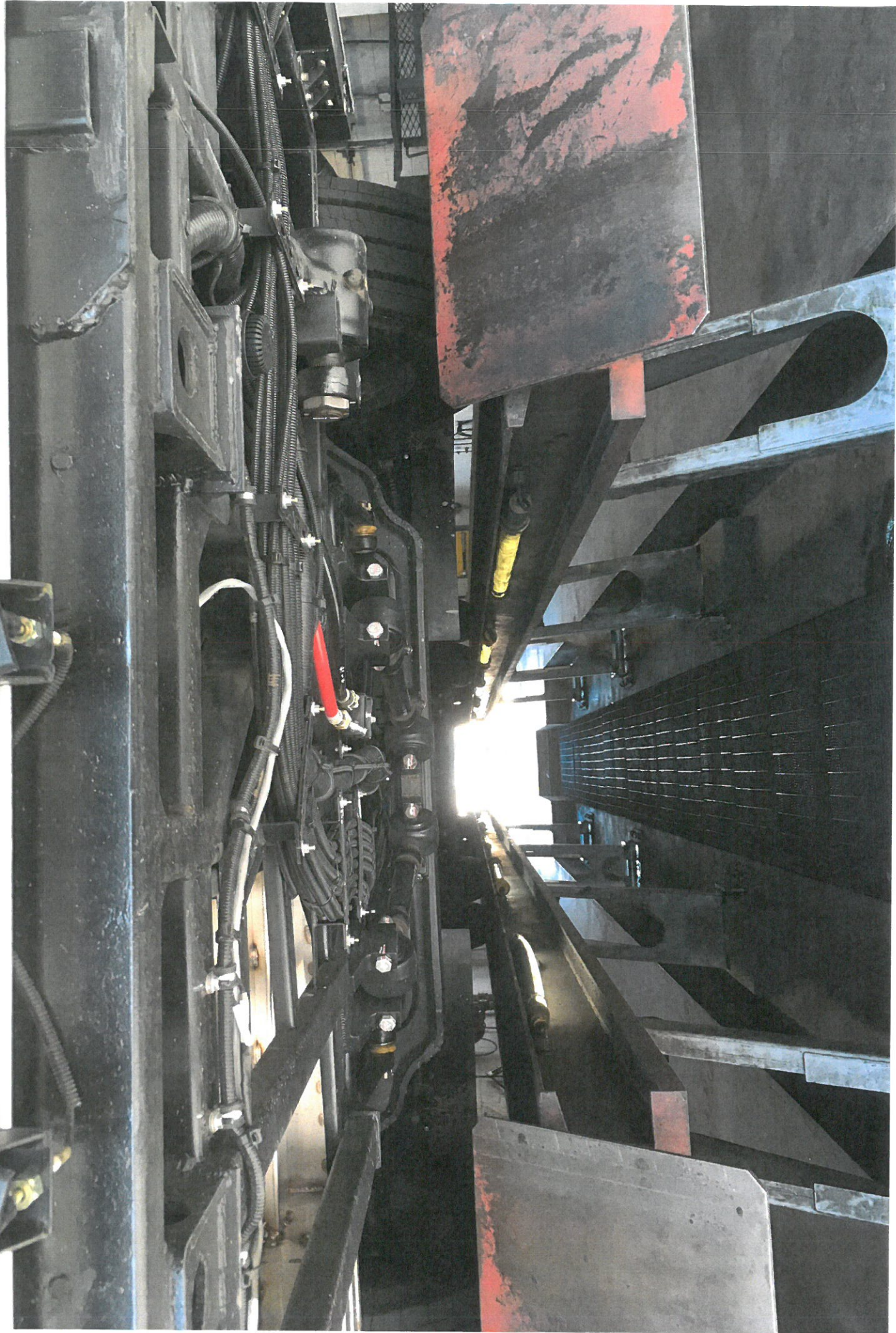
1715 Questionable welds, rust, and incomplete



1715 Jack point is questionable



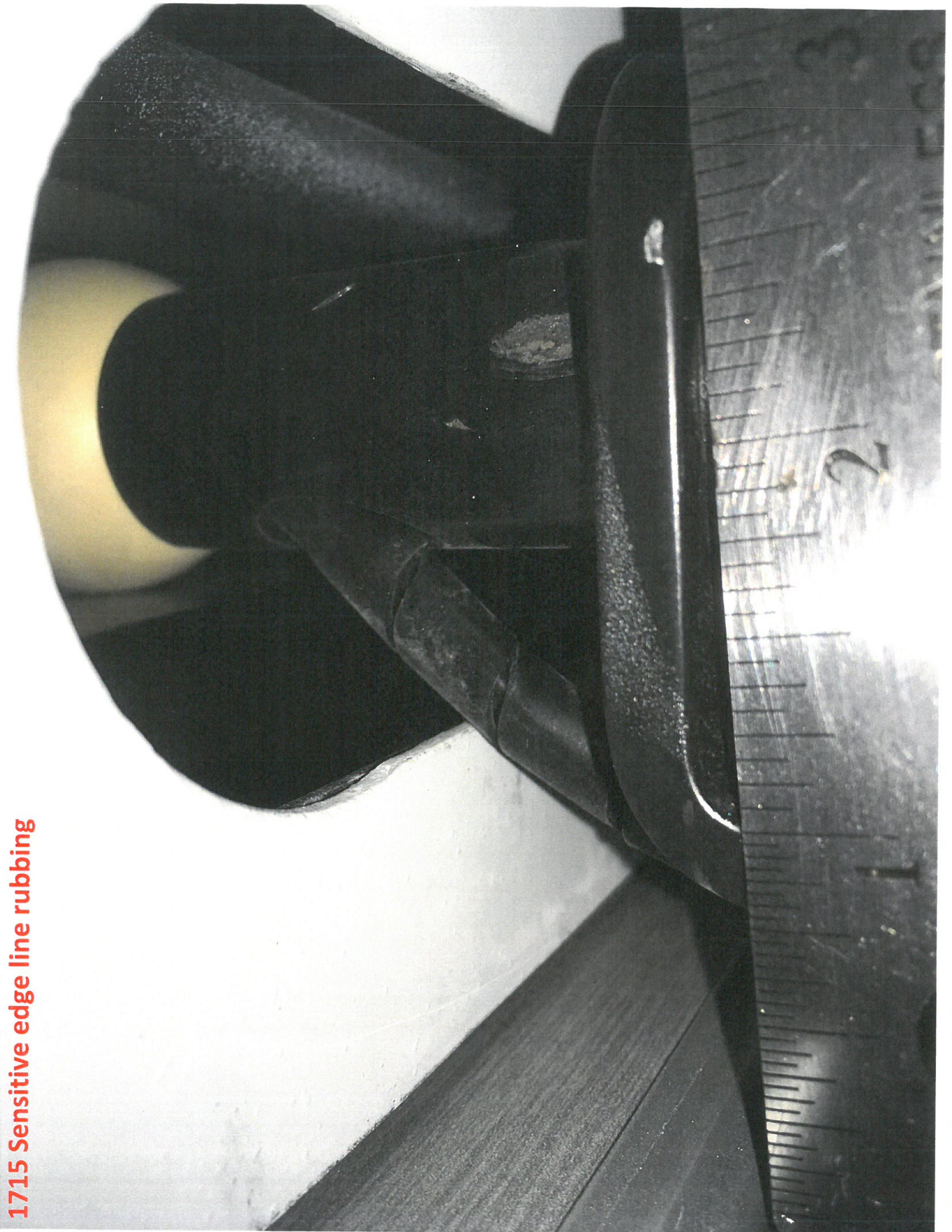
1715 Lines and cables exposed to road hazards



1715 Front of joint,
warped panel



1715 Sensitive edge line rubbing

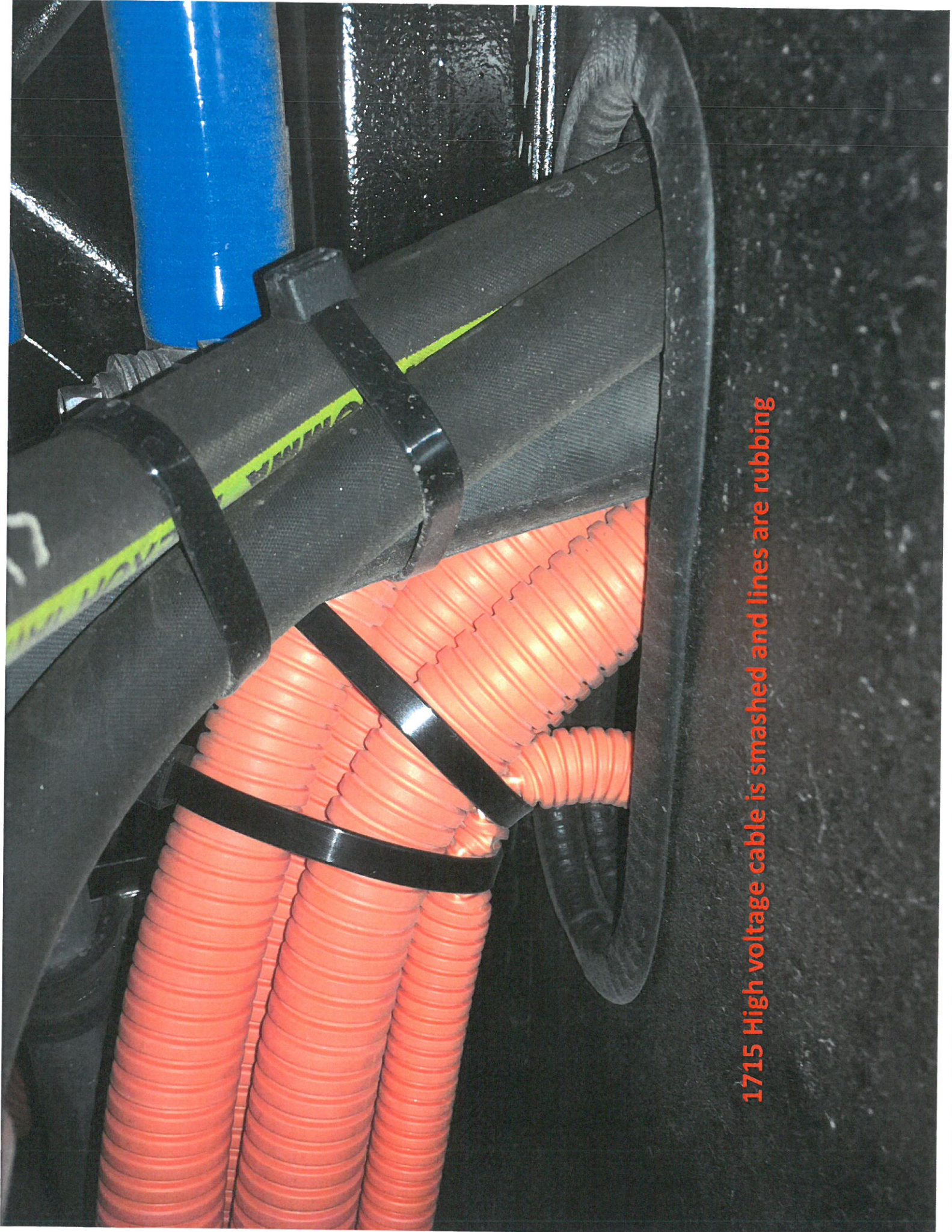


1715 Brake chamber air lines are rubbing

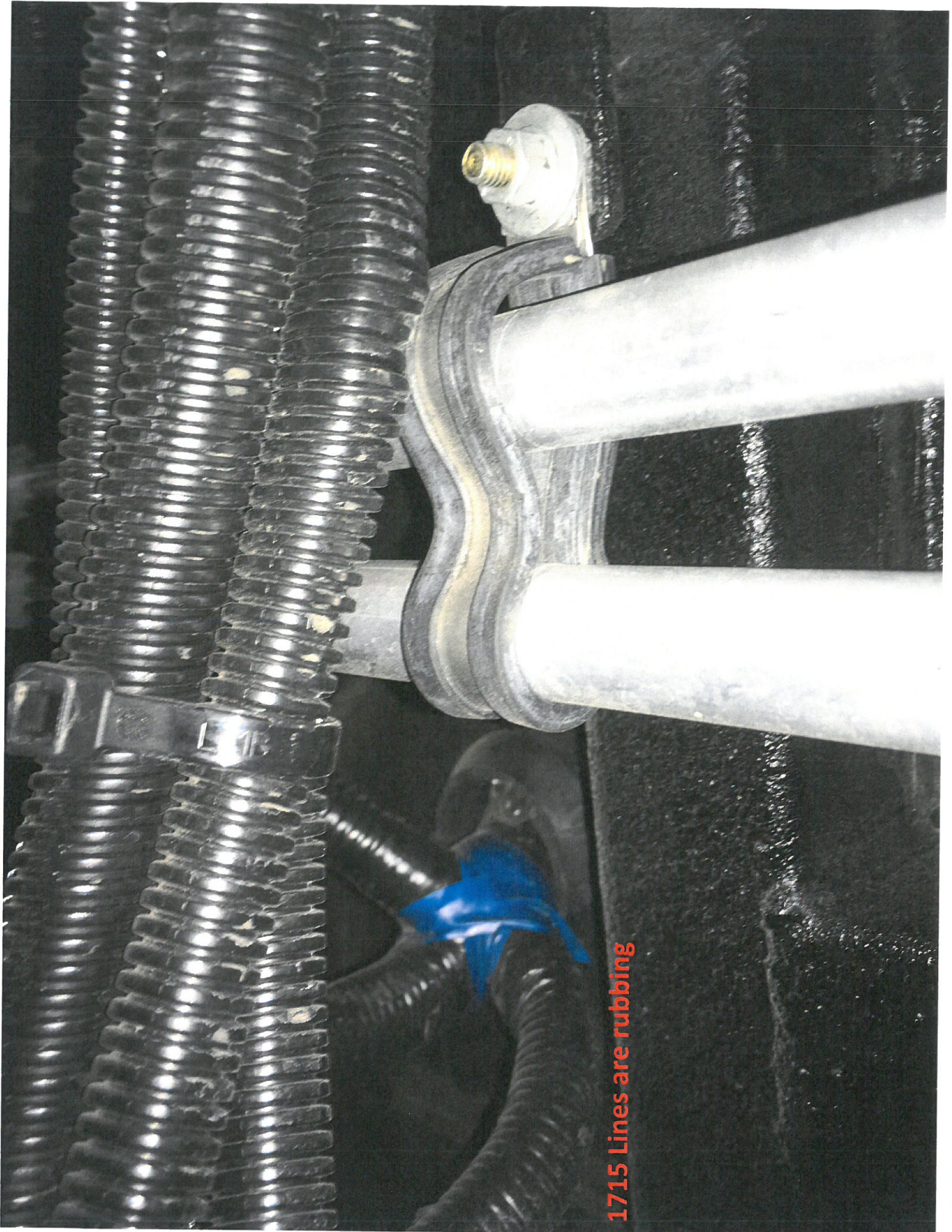


1715 Lines are rubbing



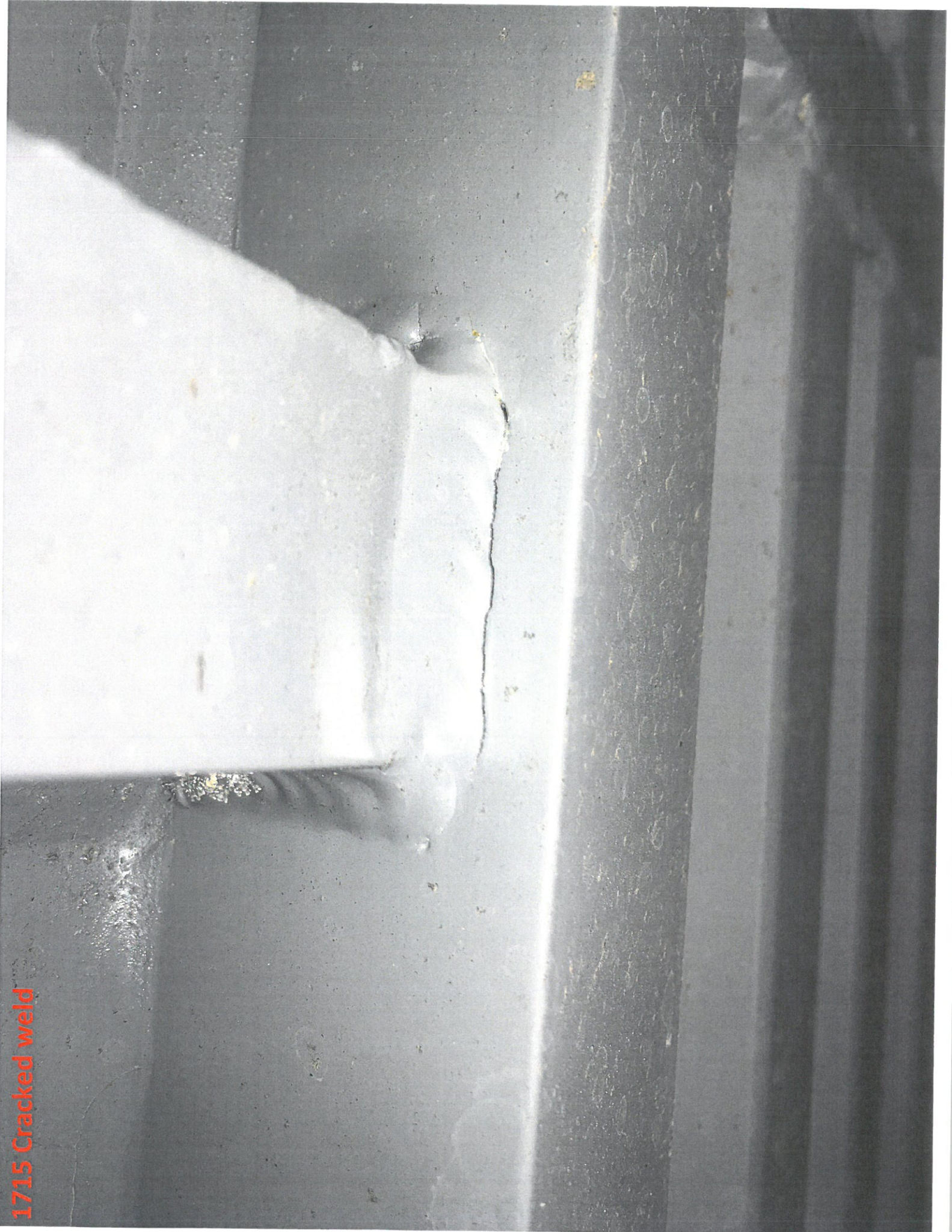


1715 High voltage cable is smashed and lines are rubbing



1715 Lines are rubbing

1715 Cracked weld



1715 Cracked weld



1715 Bridge plate weld incomplete

