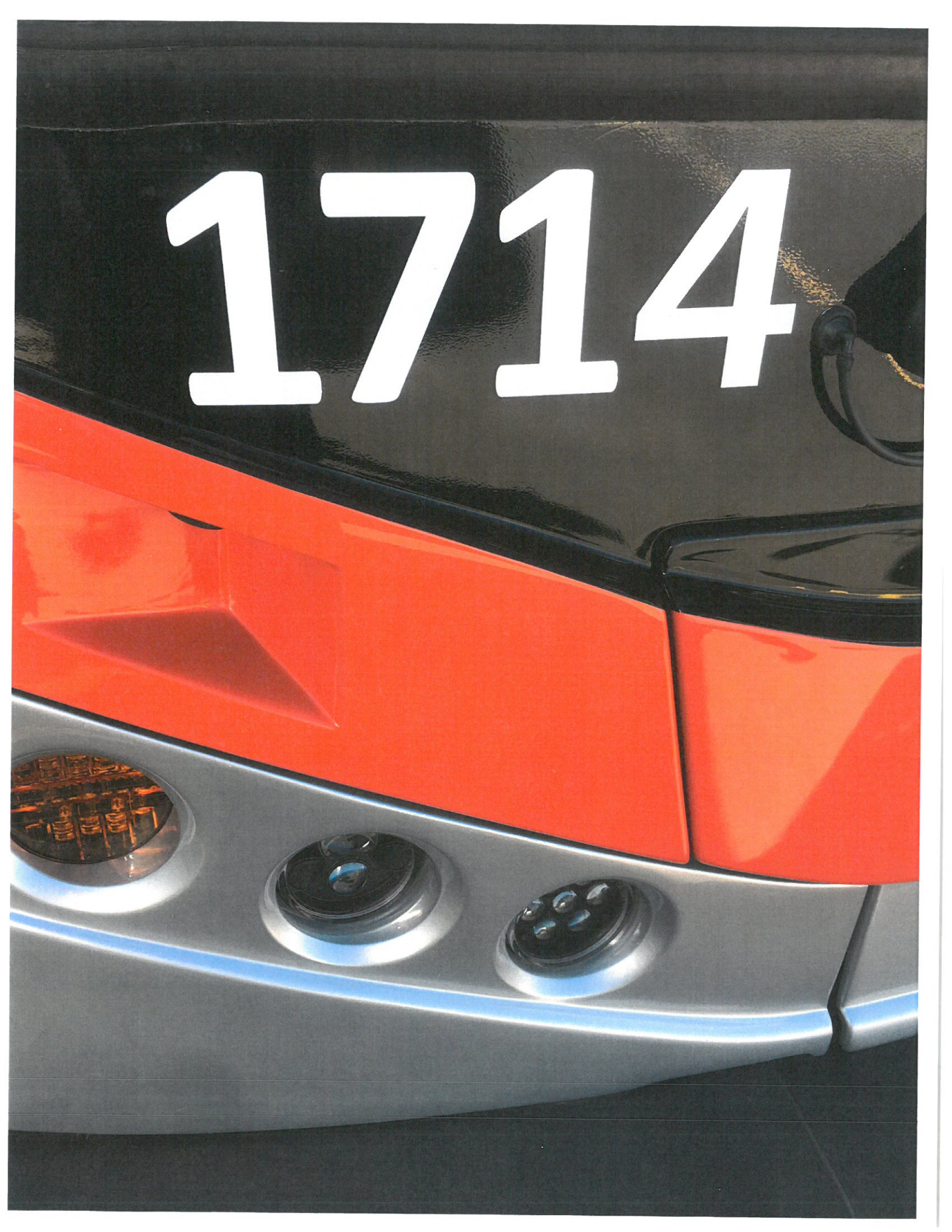
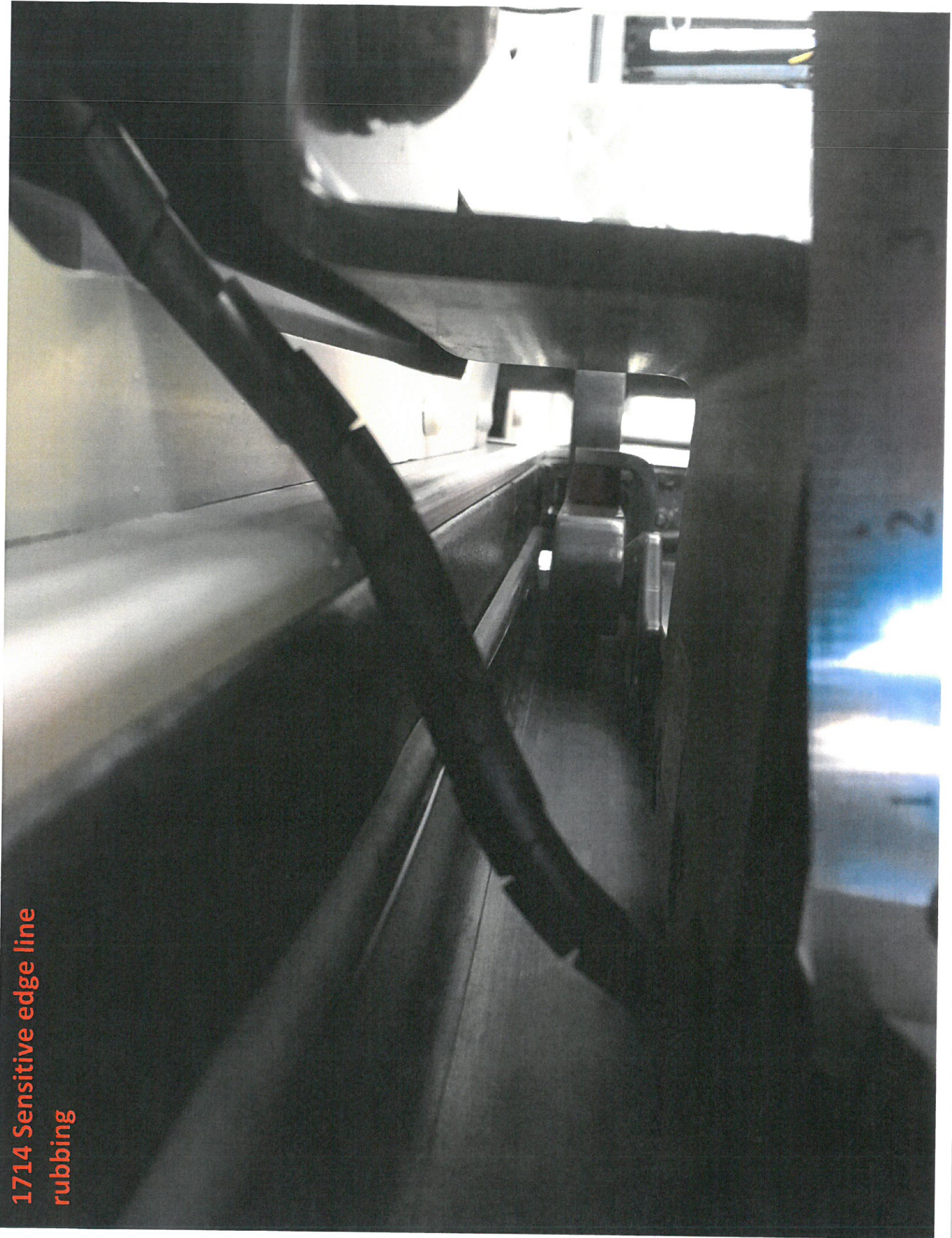


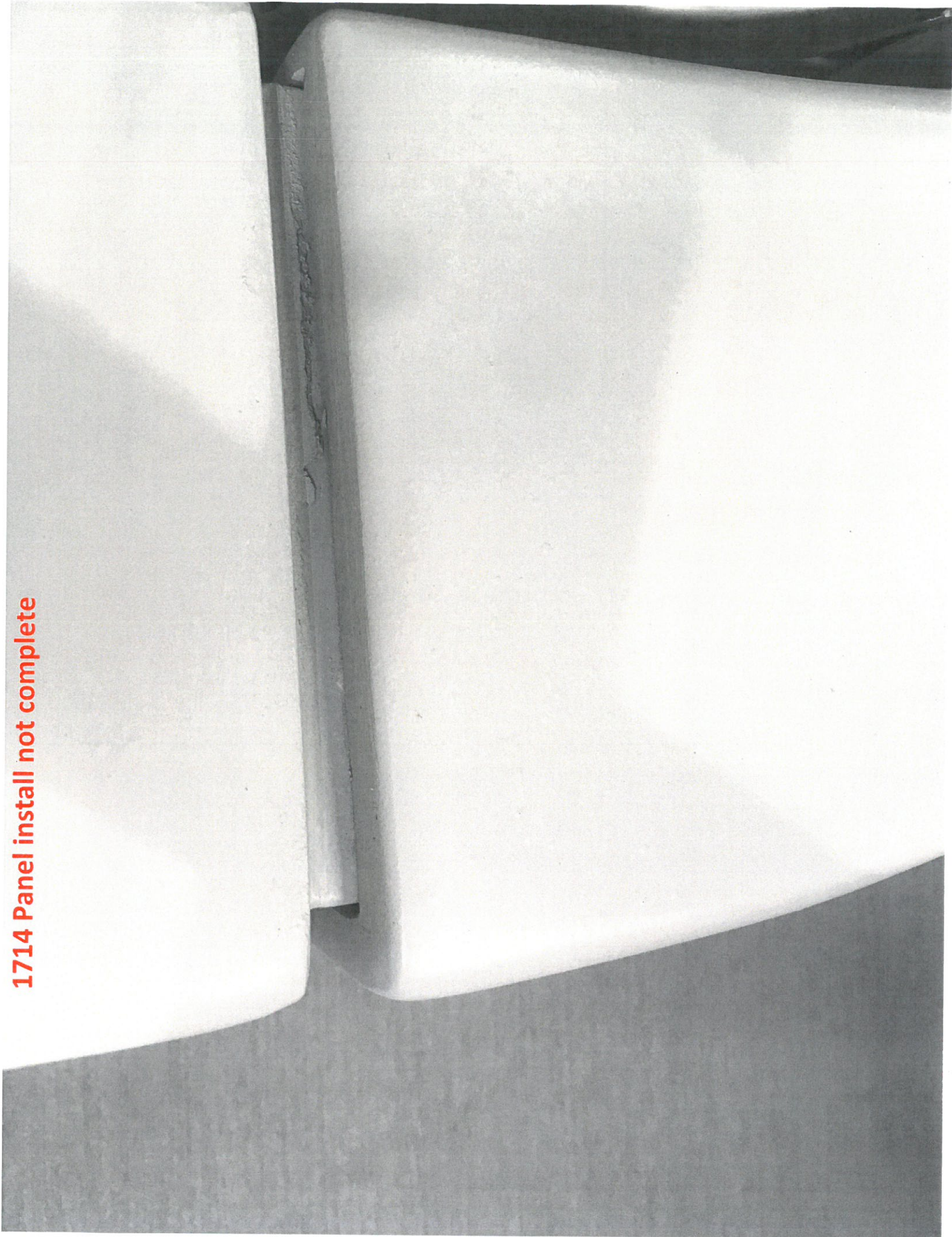
1714

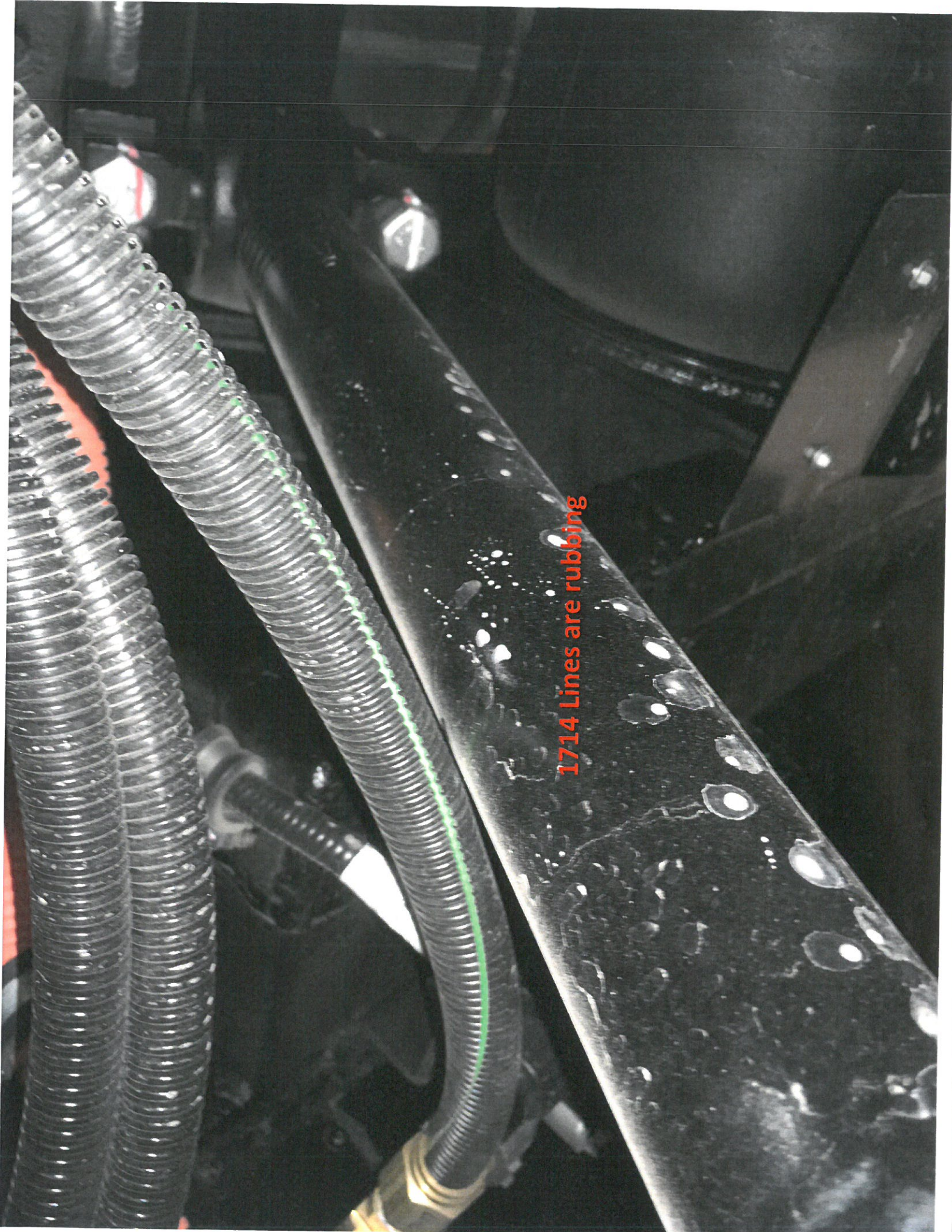


1714 Sensitive edge line
rubbing



1714 Panel install not complete



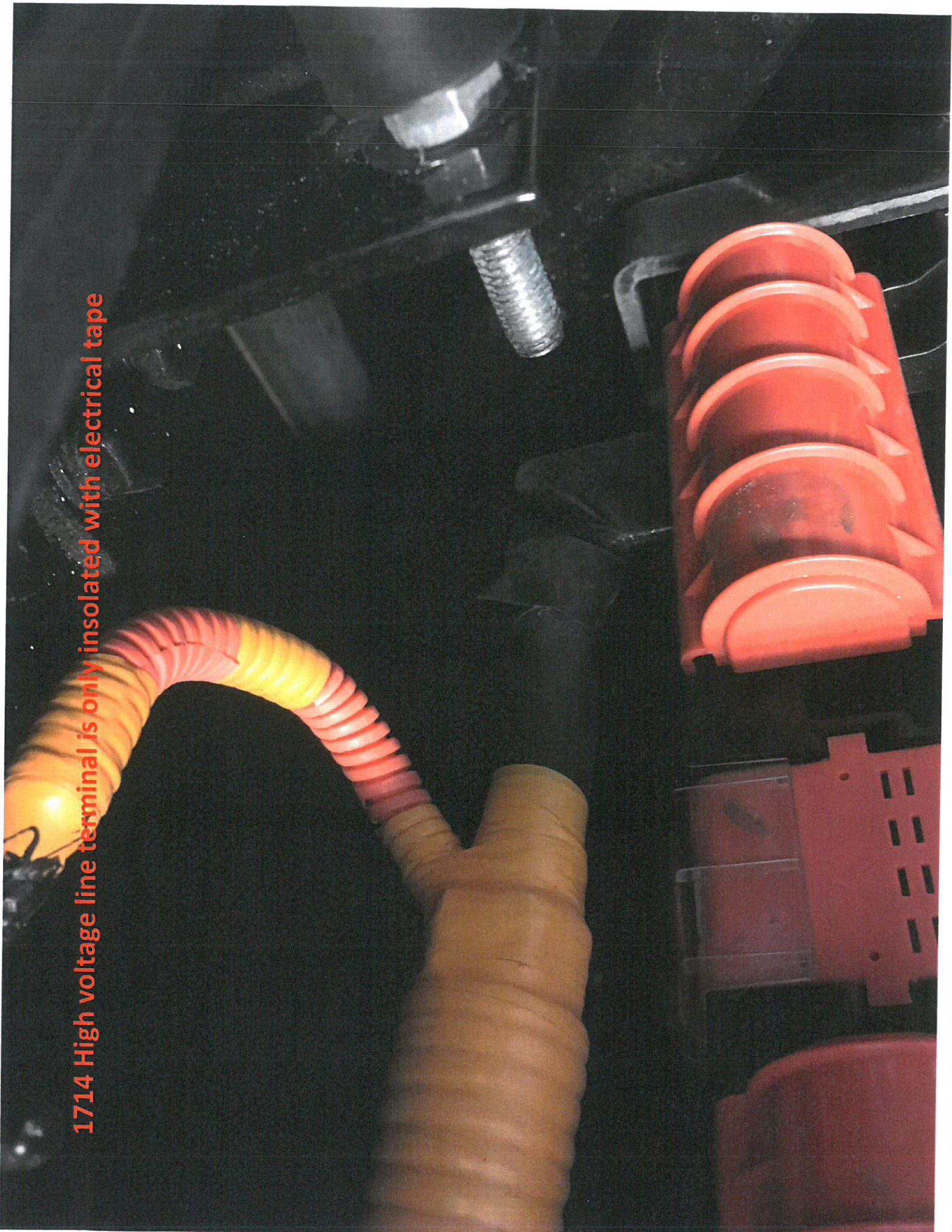


1714 Lines are rubbing

1714 Lines are rubbing



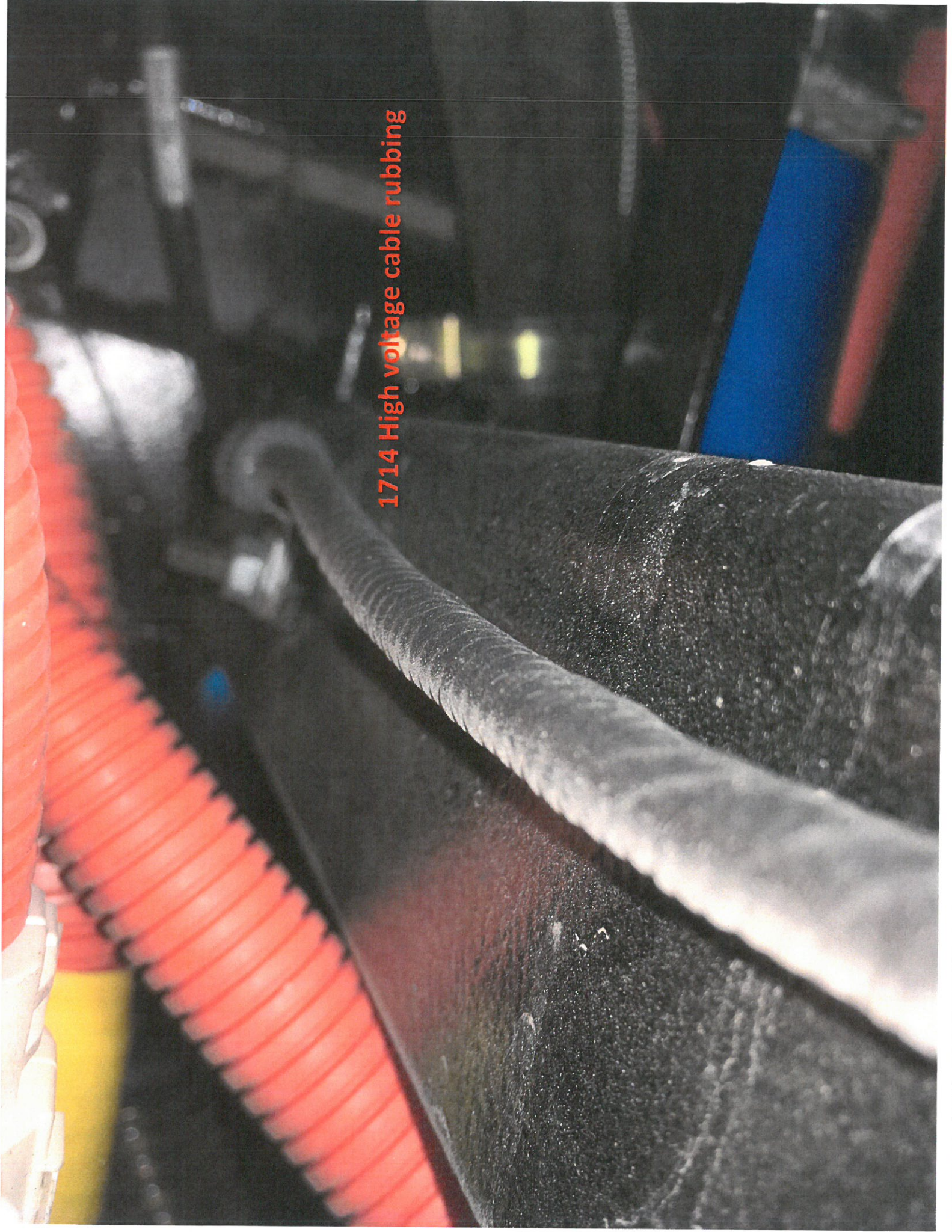
1714 High voltage line terminal is only insulated with electrical tape



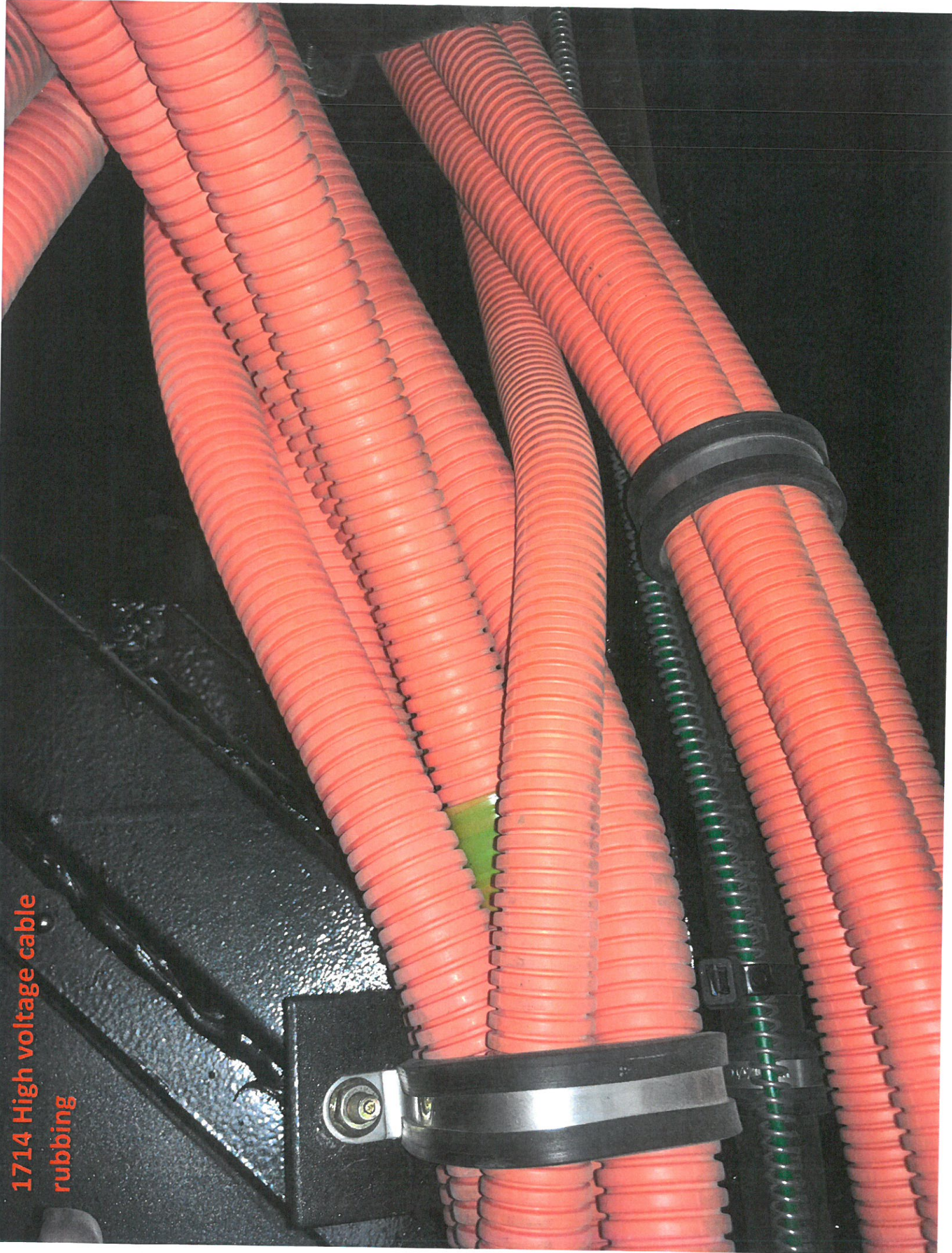
1714 High voltage cable rubbing



1714 High voltage cable rubbing



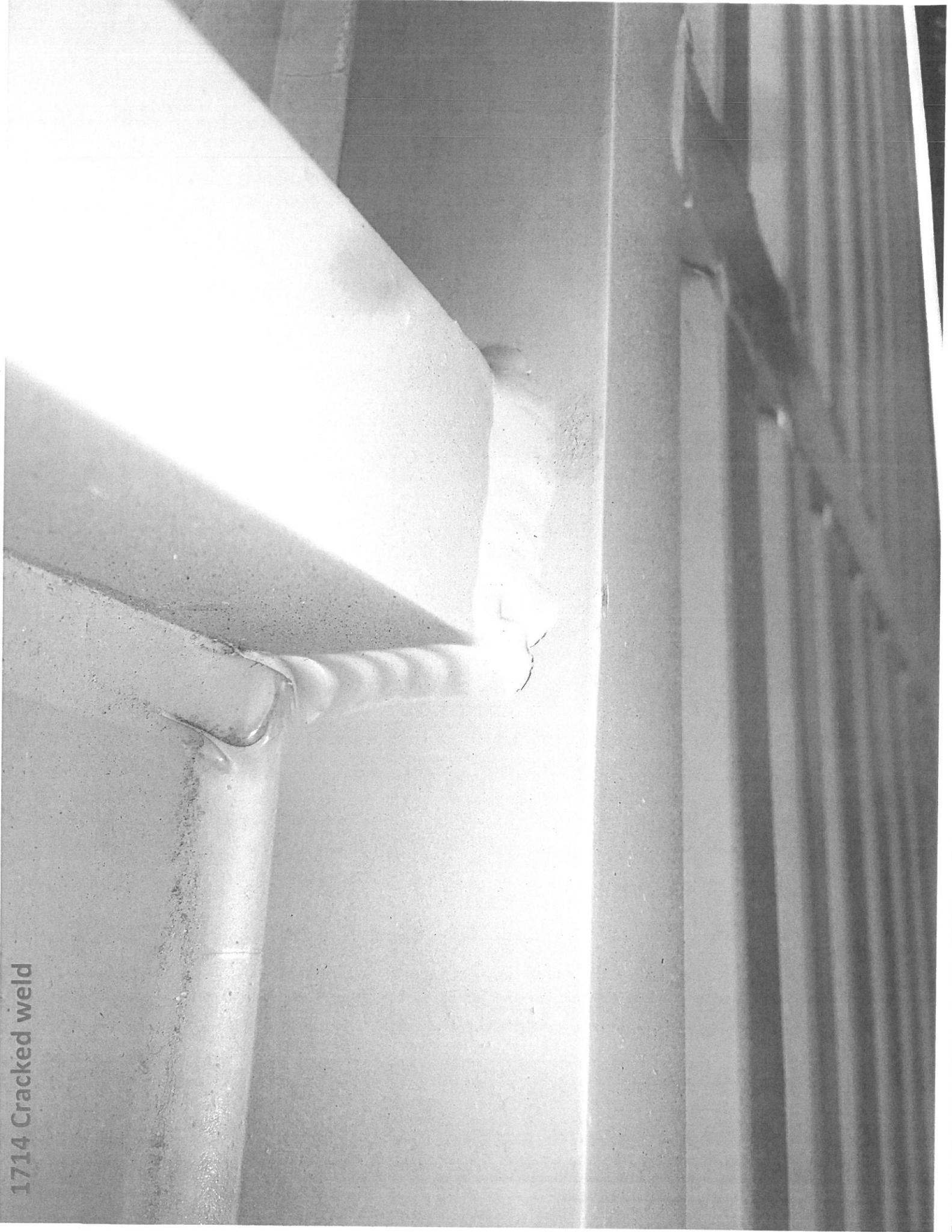
1714 High voltage cable
rubbing



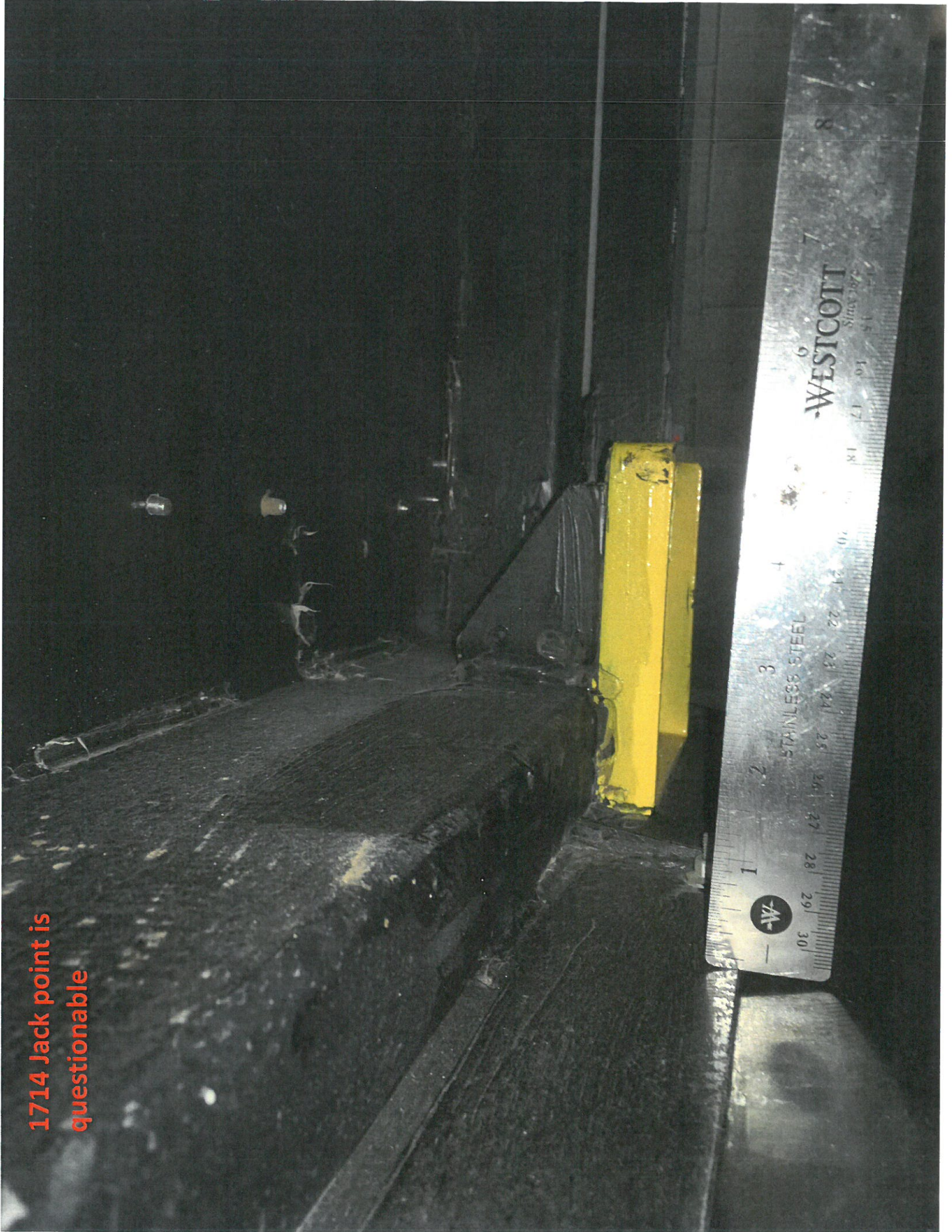
1714 Cracked weld



1714 Cracked weld

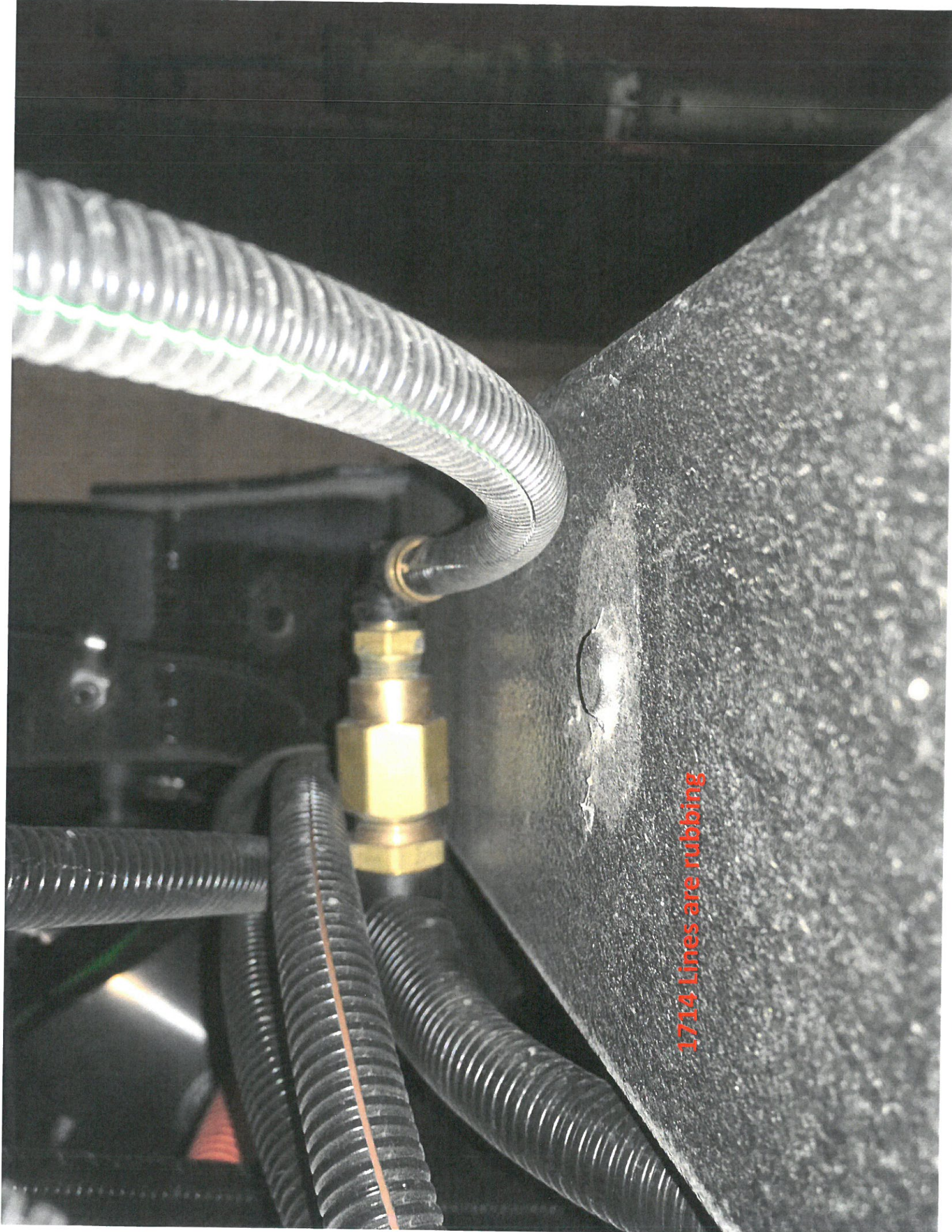


1714 Jack point is
questionable



1714 Questionable welds and incomplete





1714 Lines are rubbing

1714 Lines are rubbing

