

1708 - center doors sensitive edge line Ribbing, not secured)



1708- Engine Comp Door weld S/S leaking water



1708- Engine Cnpt Door welds cracking



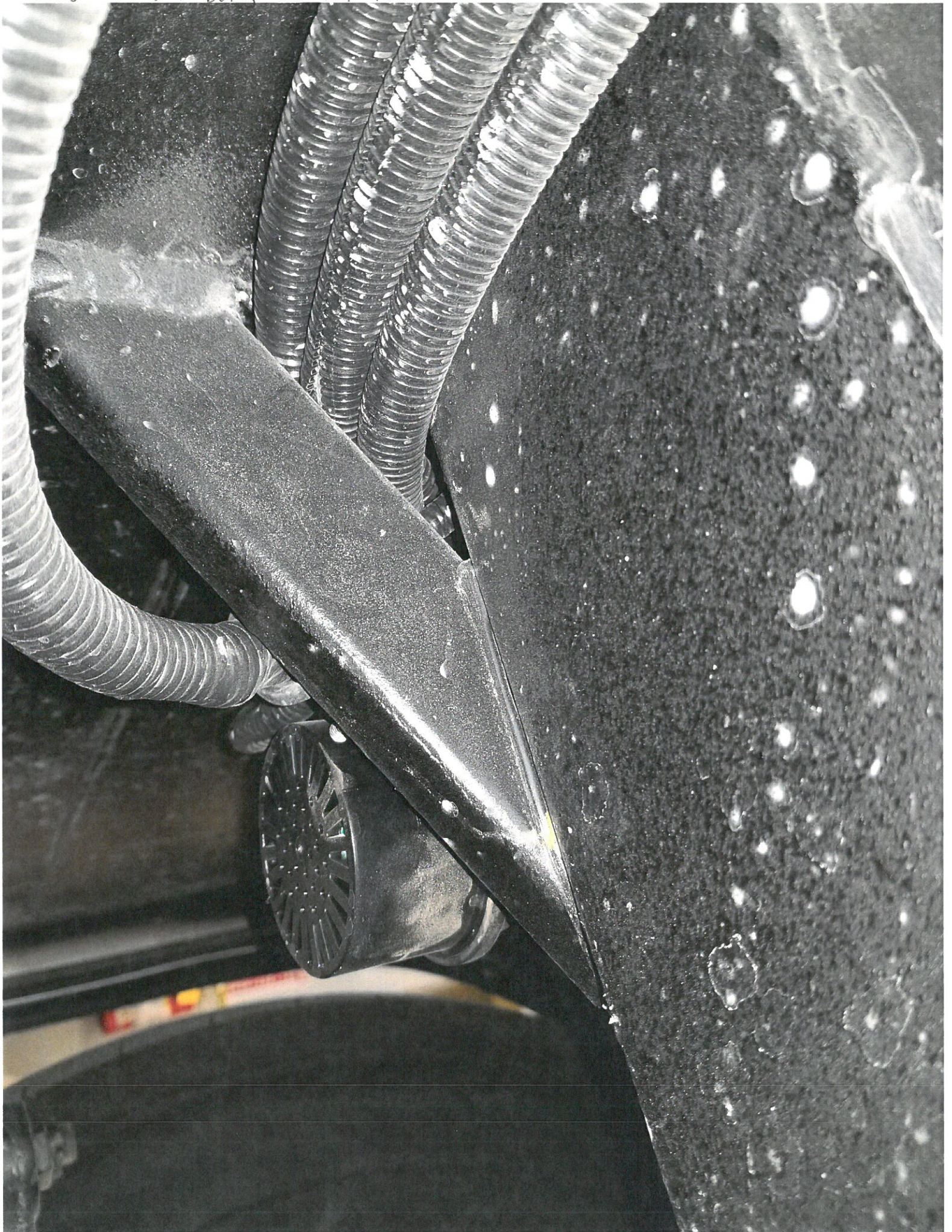
1708 Questionable strength of jack point



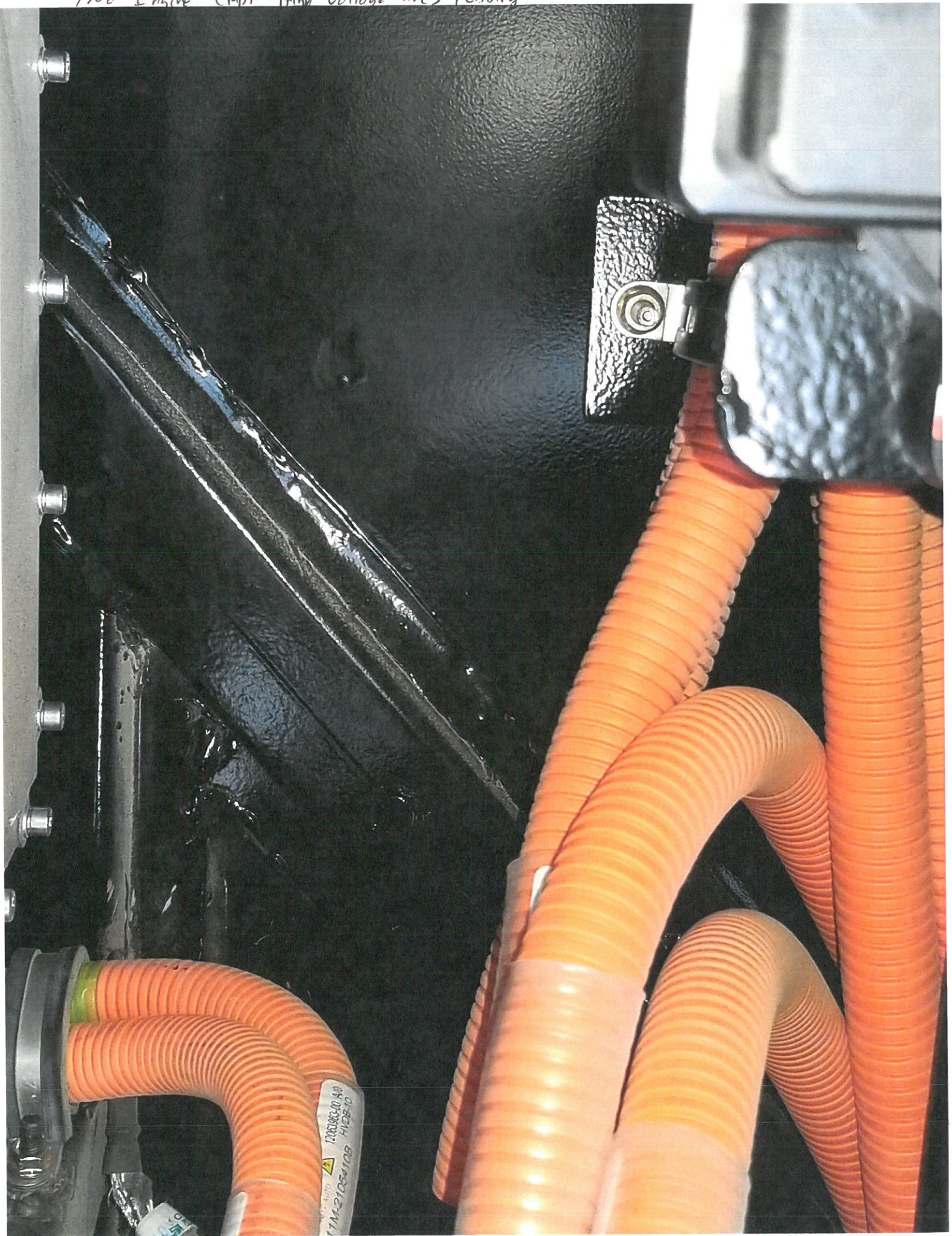
1708 Engine Crpt - low coolant



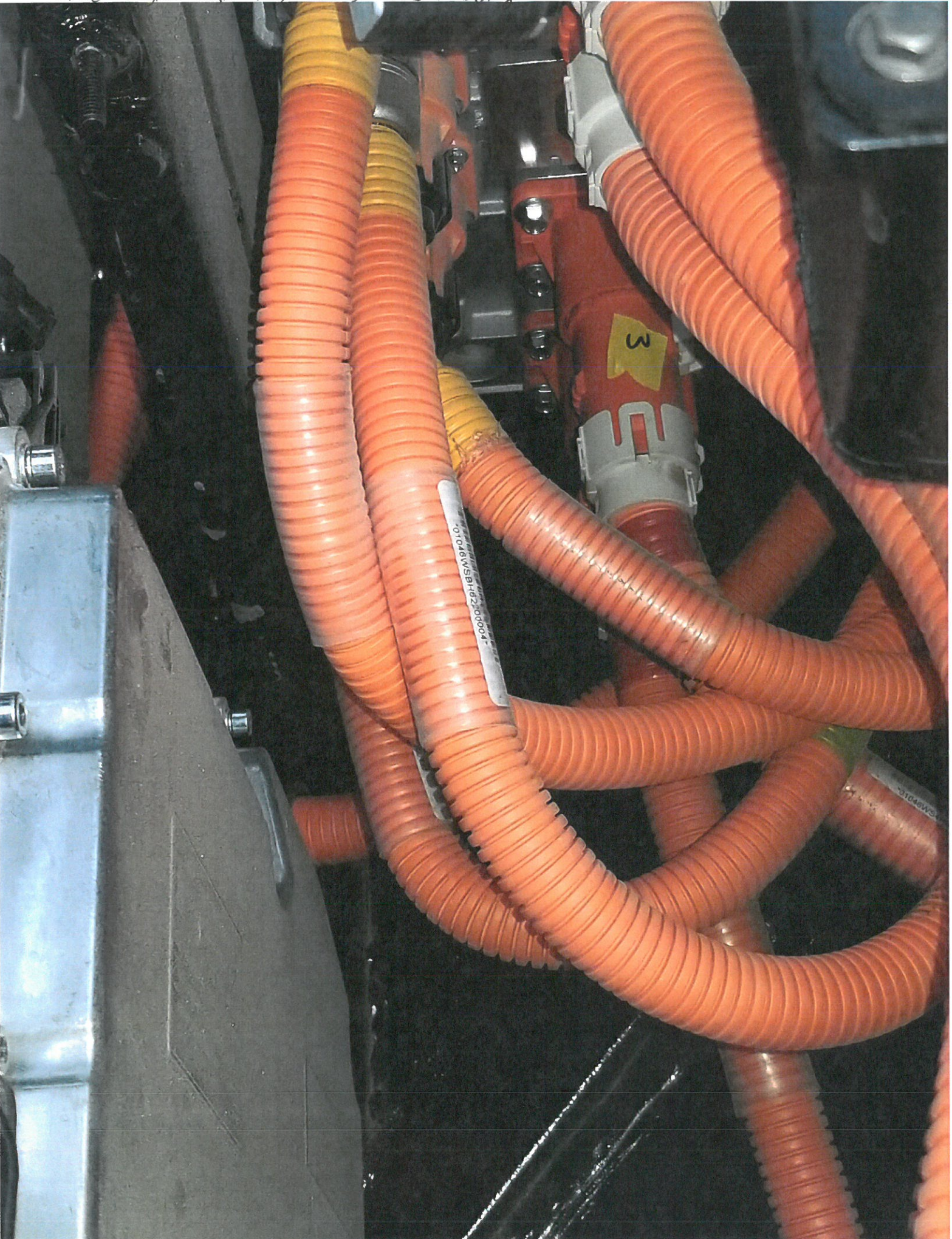
1708 lines rubbing and rust from weld



1708 Engine Cmpnt - High voltage lines rubbing



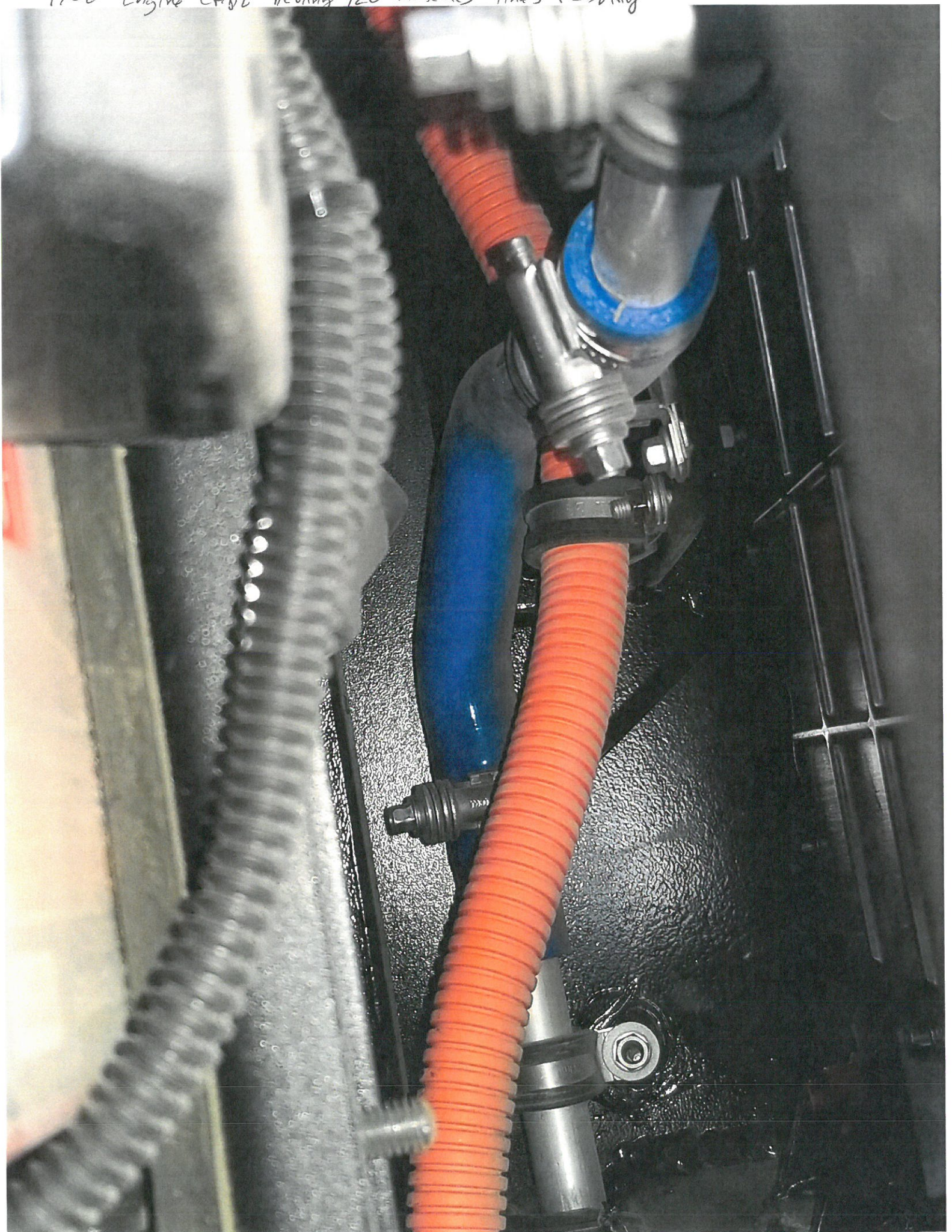
1708- Engine Crpt High Voltage lines rebbing



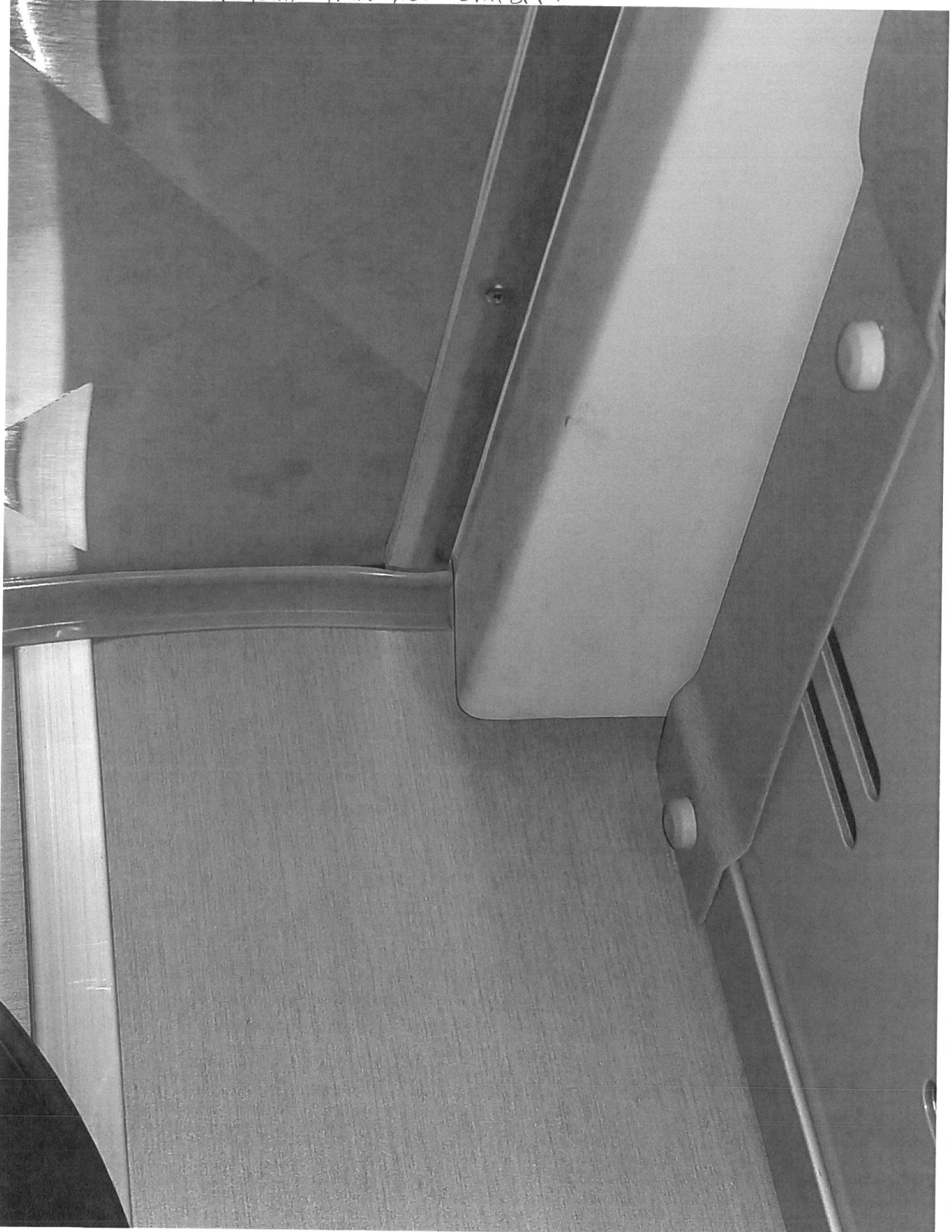
1708 - High voltage wires reblending



1700 - Engine Comp helping 12v batteries lines rubbing



1/08 - S/S before joint trim not uniform



1708 silicone where it should be welded



1708 silicone where it should be welded



1708 silicone where it should be welded



1708-515 Front of joint trim not uniform



Pull down
red
handle and
hold



**EMERGENCY
EXIT**

1708 - center c/s seats wires + connectors exposed



1708 poor and missing welds - rusting



1708 - c/s rear of joint panels cracking + separating



1708 - S/S Rear No secured to rear bulkhead



1708-S/S Bellows have high tension and are bending Frames



1708 poor and rusty welds. Bridge plate frame



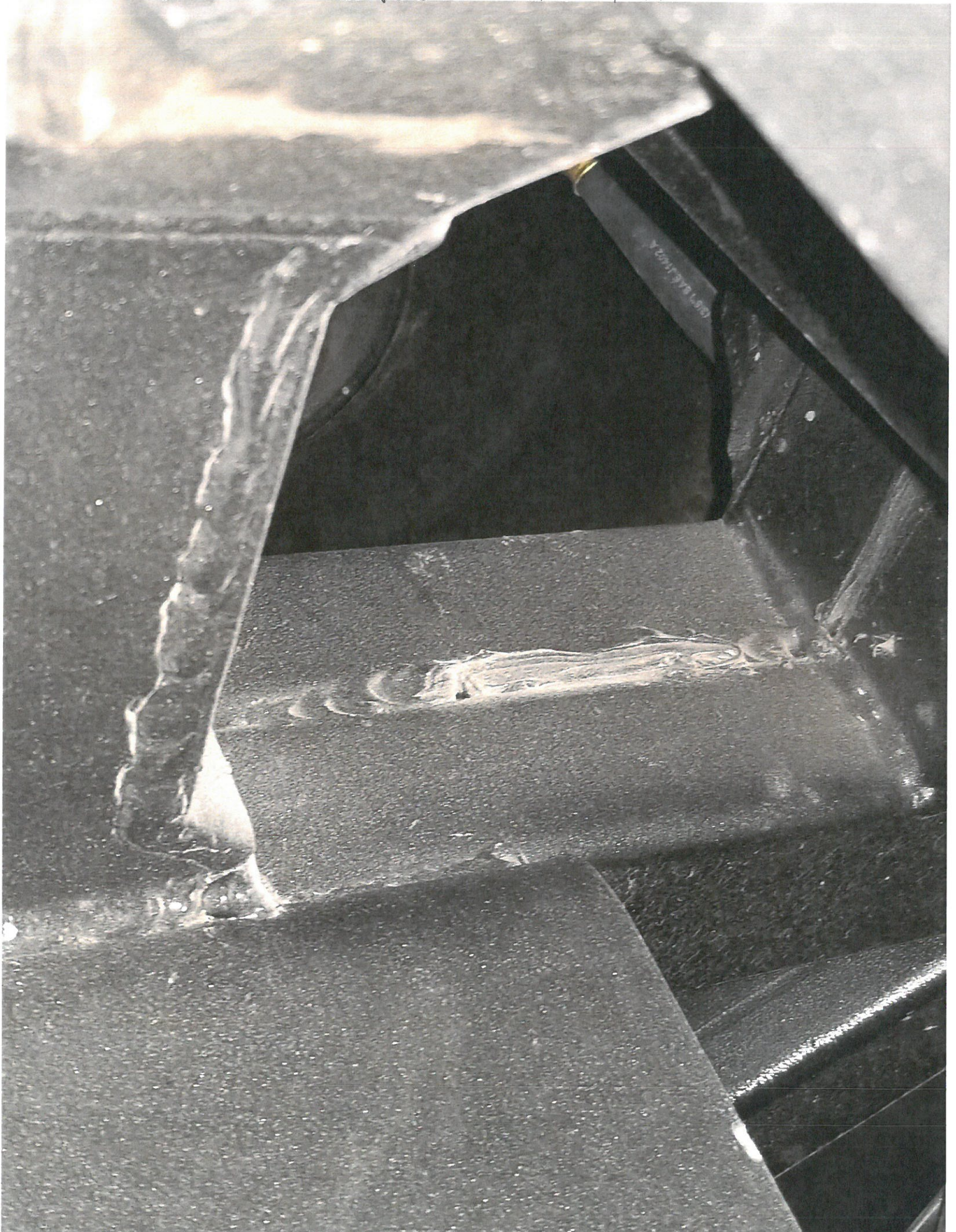
1708 poor and rusting welds, Bridge plate frame



1708 - Front of bus shows lines and wires hanging down



1708. S/S Front weld incomplete and covered w/ silicone



1708 poor, rusting welds. rear of joint



1708 poor welds, rear of joint



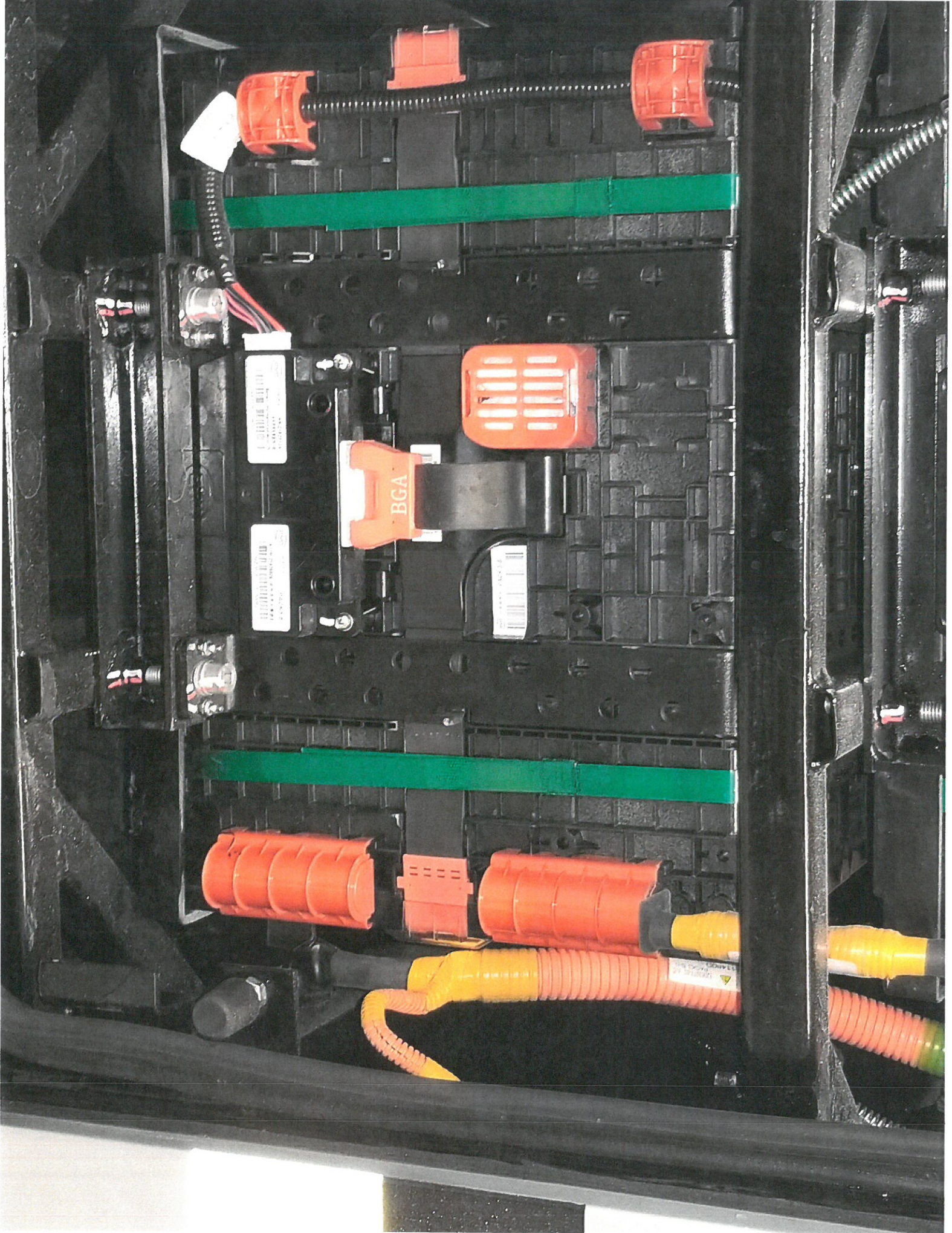
1708 CLS Bridge plate welds rusting



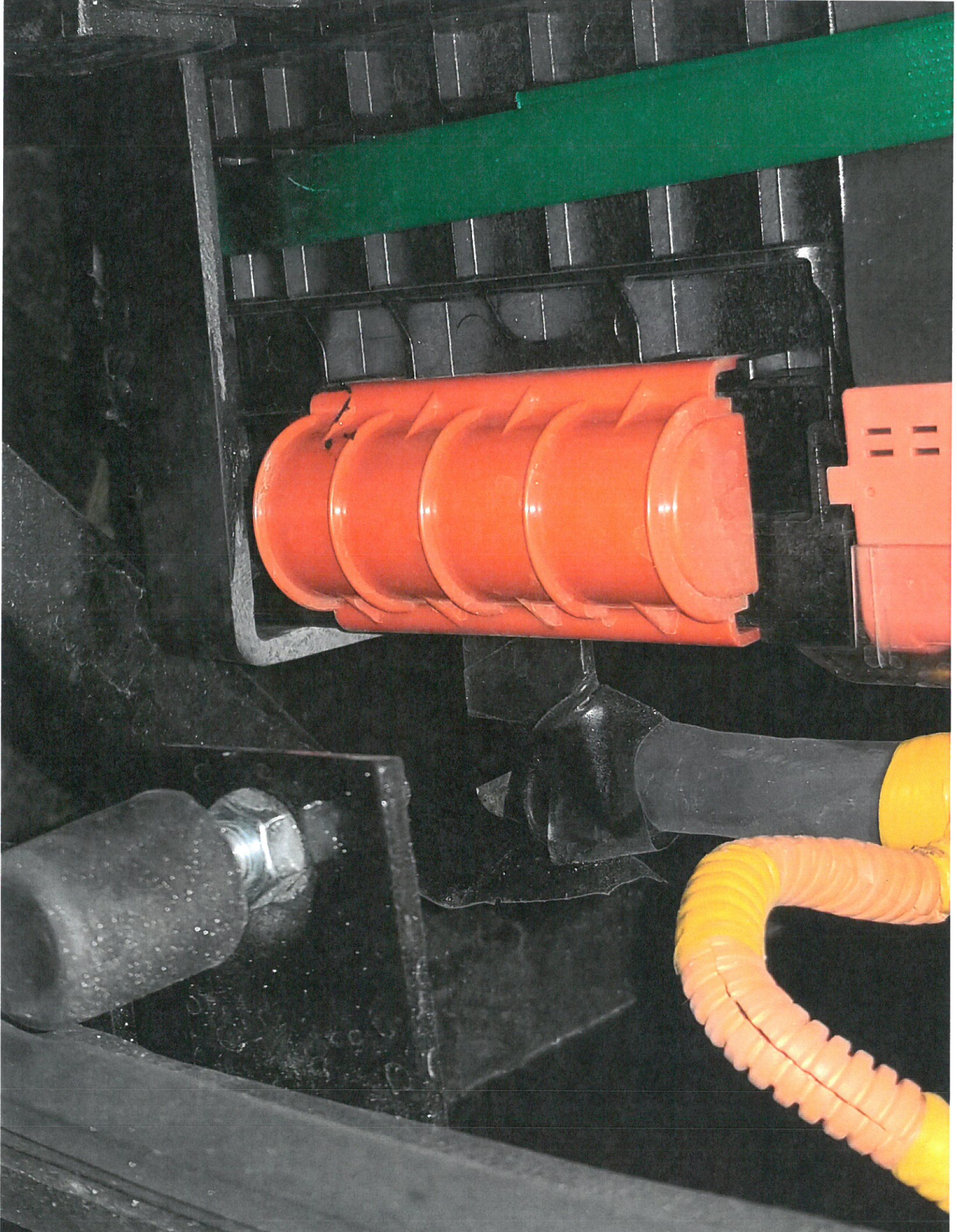
1708 - Rear Frame cross plate rusting and welds are not bonded



1708 exposed High voltage terminal



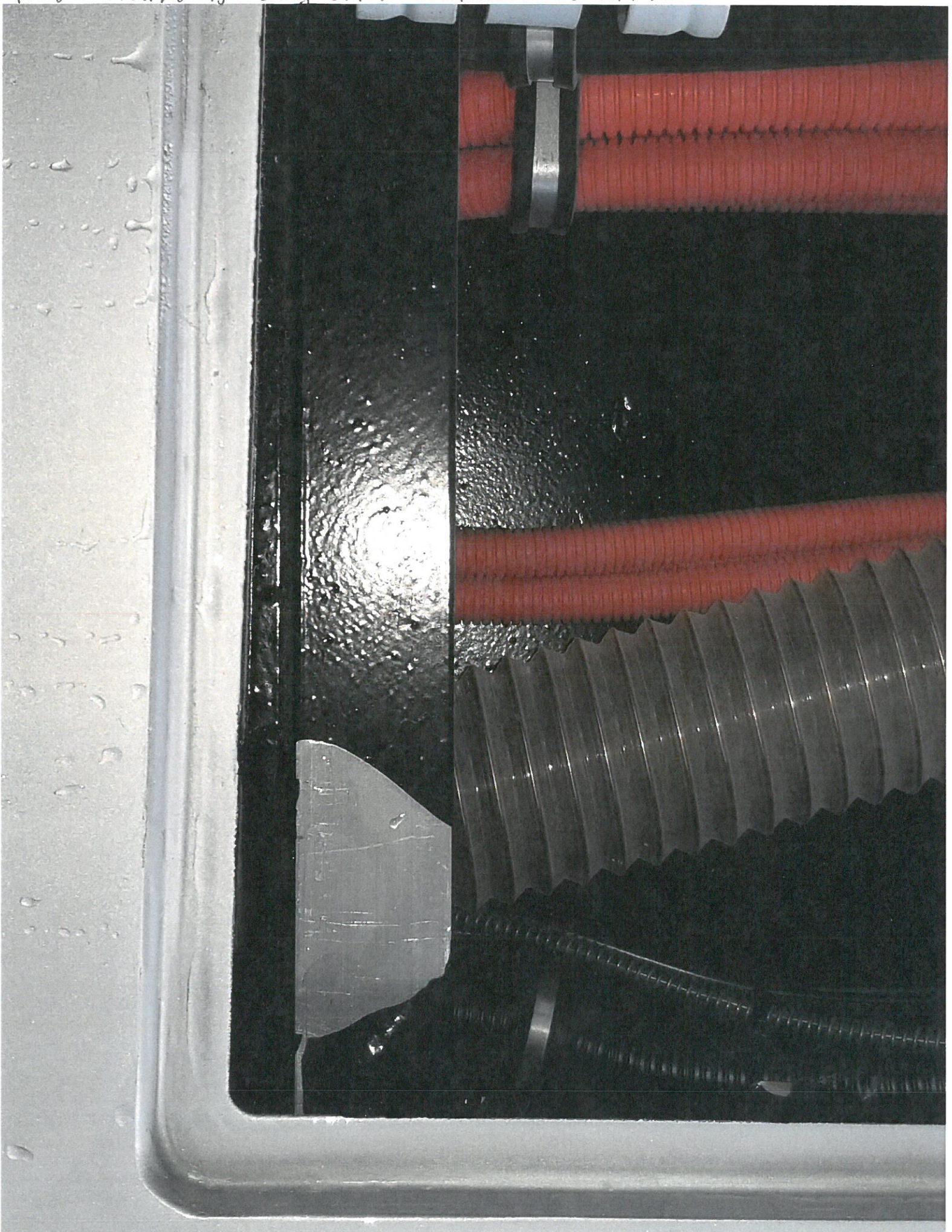
1708 - Exposed High Voltage line



1708- Fire Suppression line rubbing on Frame



1708 Rinnish is coming off. compartment in left rear



1708- lines rubbing everywhere

