

A close-up photograph of the front of a bus. The bus has a black upper section, a red stripe, and a silver lower section. The number '1705' is printed in white on the black section. The windshield is visible, showing a reflection of a person and some equipment. The bus is parked on a paved surface with a yellow line. Another bus is visible in the background.

1705

1705 RUSTED WELD



1705 Silicone used to cover up ?



1705 Bridge Plate Weld rusted



1705 MISSED WELD

MAIN





1705 MISSED WELD

WESTON  
1 2 3 4 5 6 7 8 9 10 11 12 13 14 15 16 17 18 19 20 21 22 23 24

1705 MISSING UNDER COATING AND QUESTIONABLE INTEGRITY



1705 MISSED WELD







WESTCOTT  
6

1705 MISSED WELD

15 16 17 18 19 20 21 22 23 24 25 26 27 28 29 30 31 32 33 34 35 36 37 38 39 40 41 42 43 44 45 46 47 48 49 50

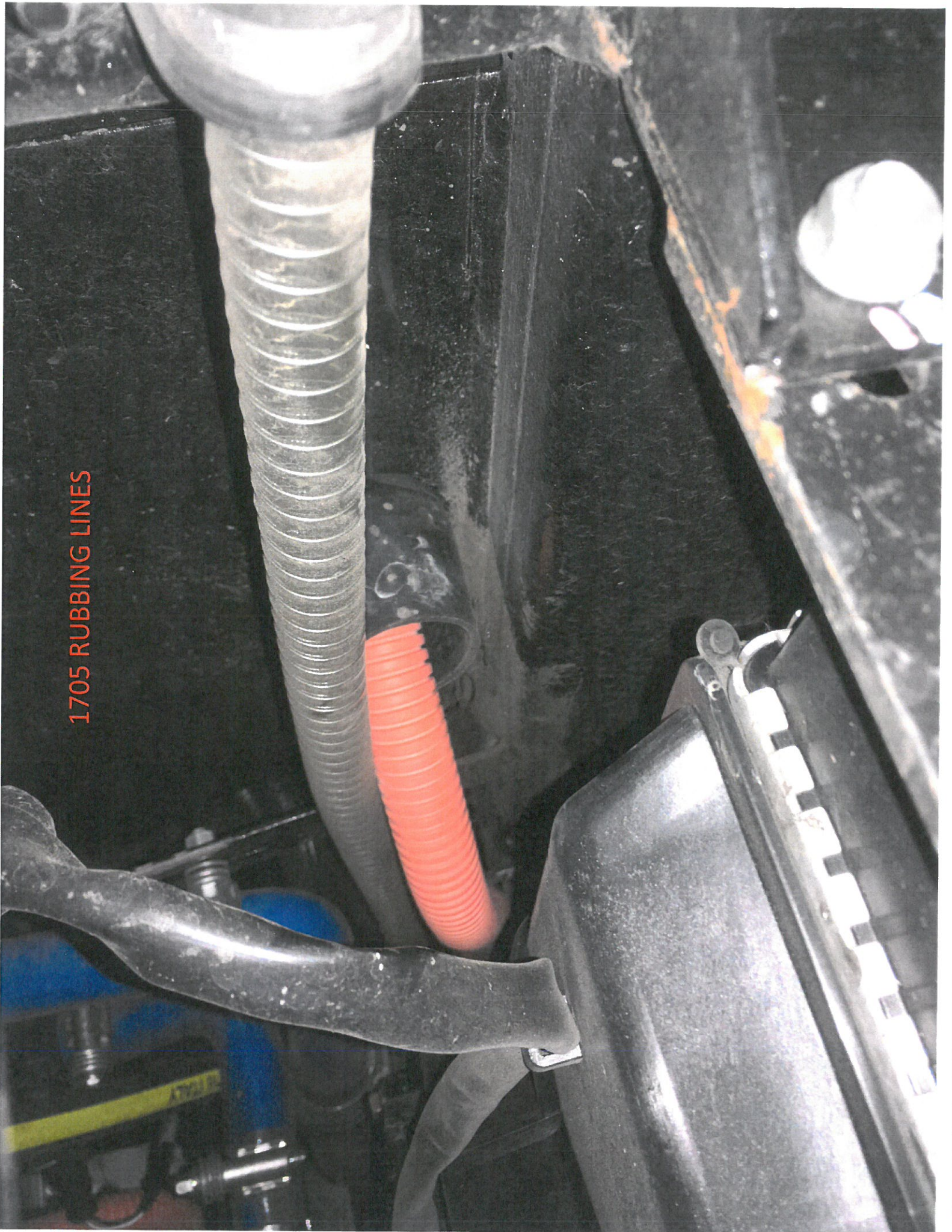


1705 RUBBING LINES



1705 RUBBING FIRE SUPPRESSION LINES

1705 RUBBING LINES



1705 Sensitive Edge line  
pinched and Rubbing



1705 CRACKING PANEL BEHIND JOINT



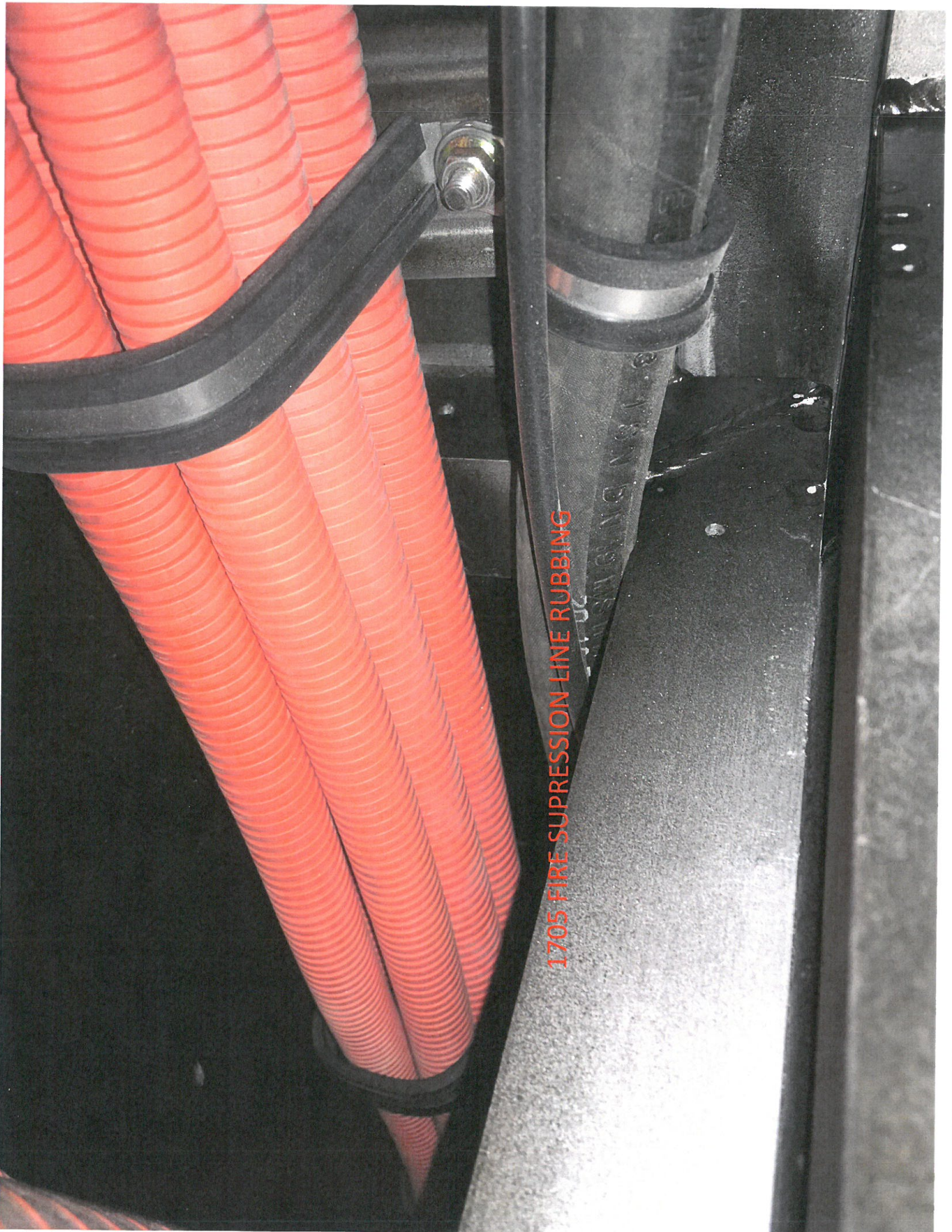
1705 CRACKING PANEL BEHIND JOINT



1705 EXPOSED HIGH VOLTAGE CONNECTIONS

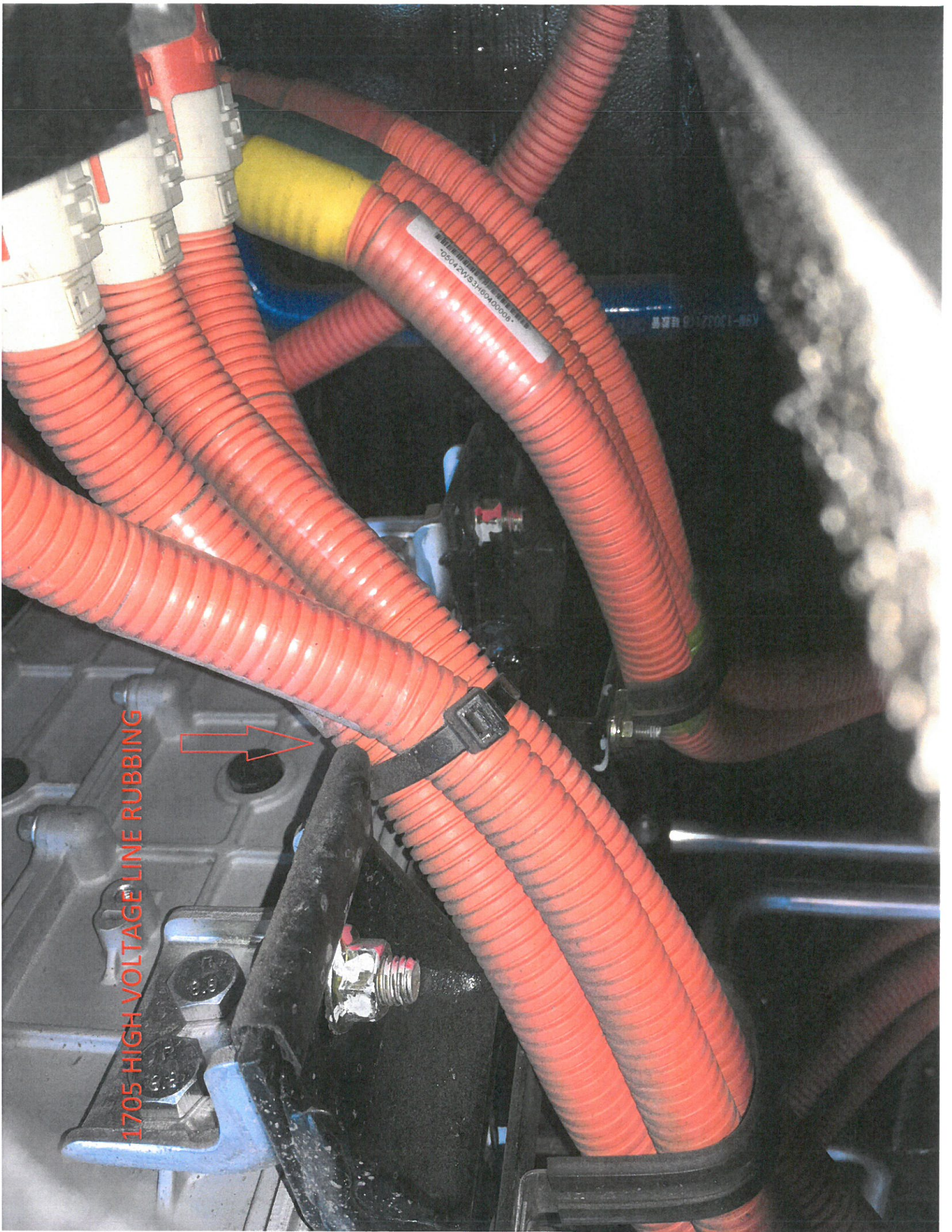


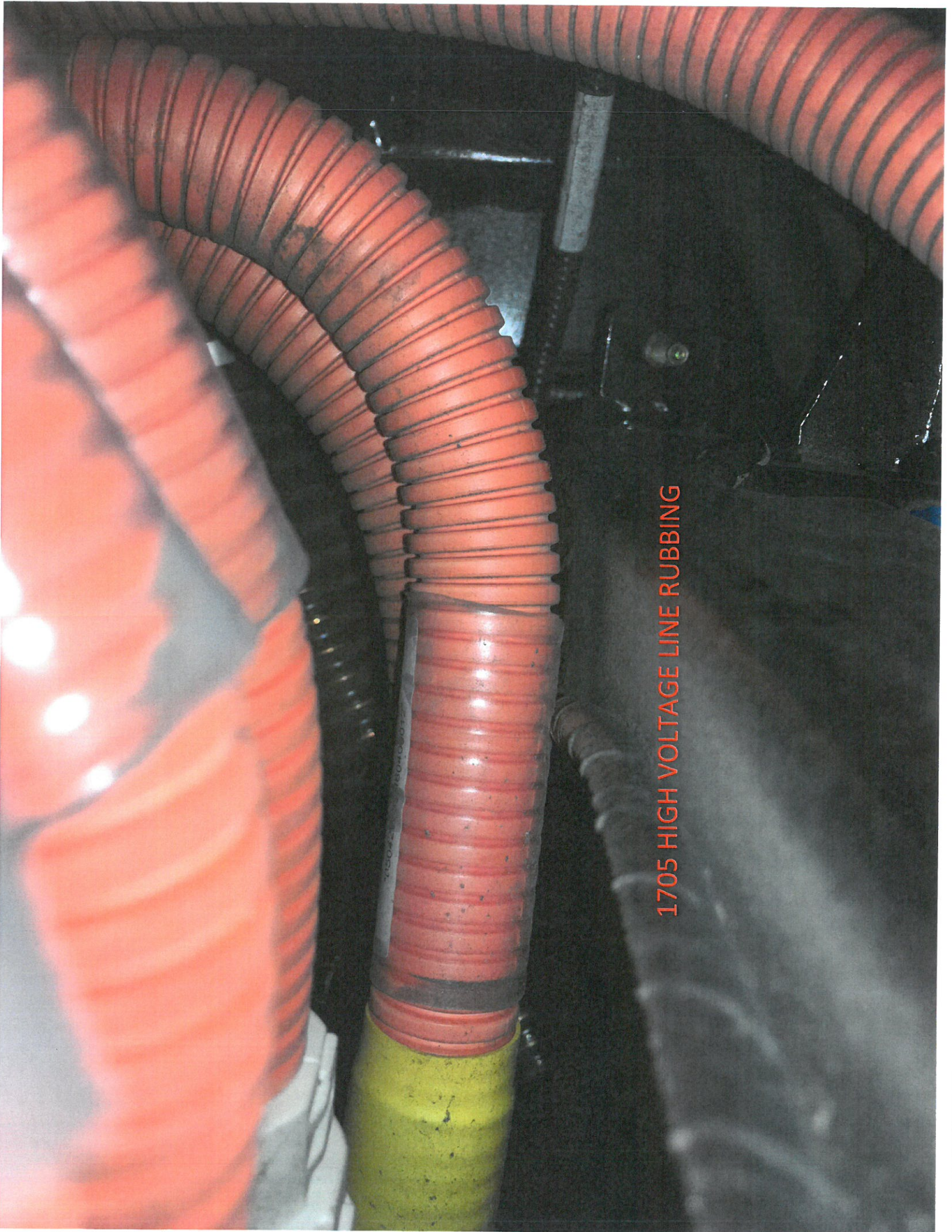




1705 FIRE SUPPRESSION LINE RUBBING

1705 HIGH VOLTAGE LINE RUBBING





1705 HIGH VOLTAGE LINE RUBBING

1705 LINES AND CABLES EXPOSED TO ROAD DEBRIS



1705 Jack points have questionable integrity

