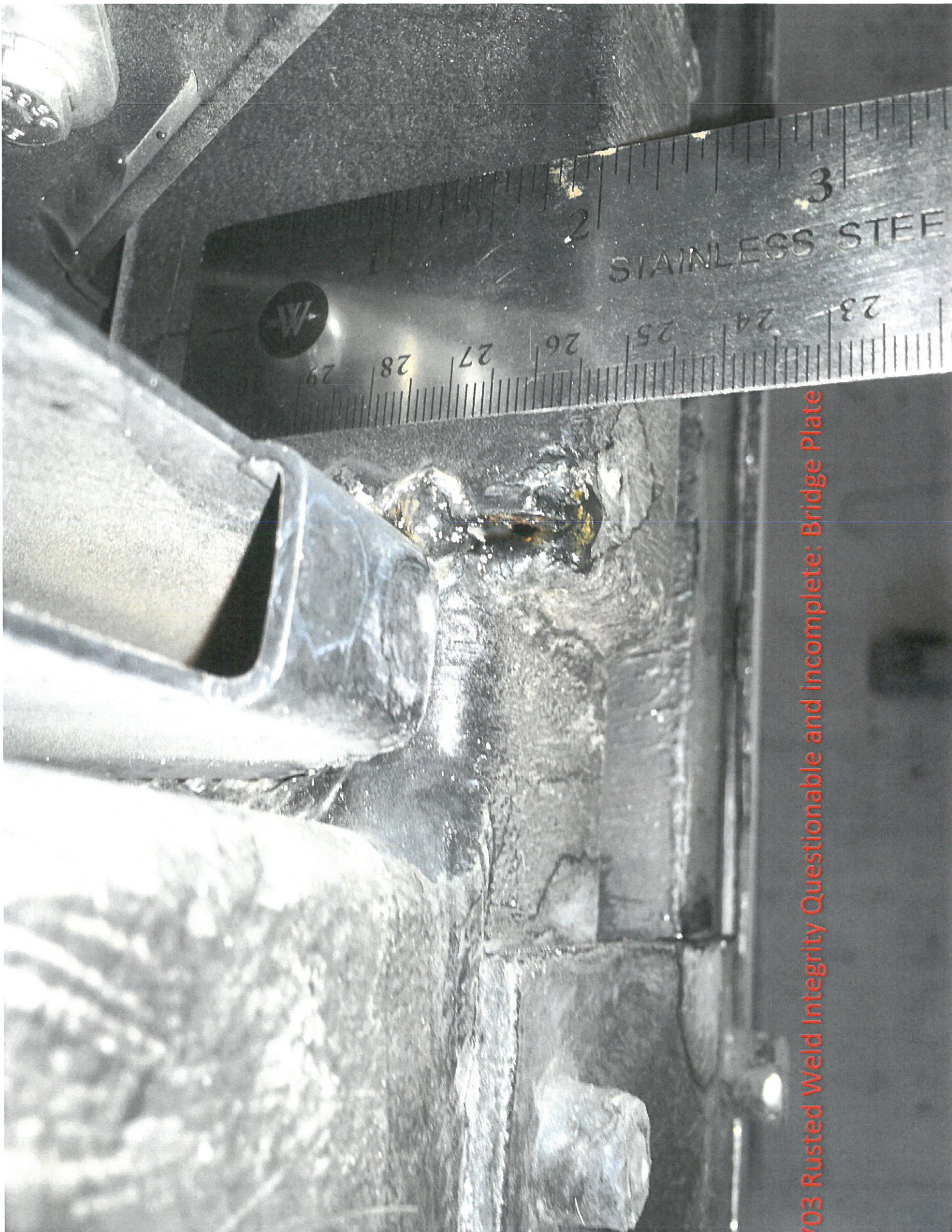


1703

A R T

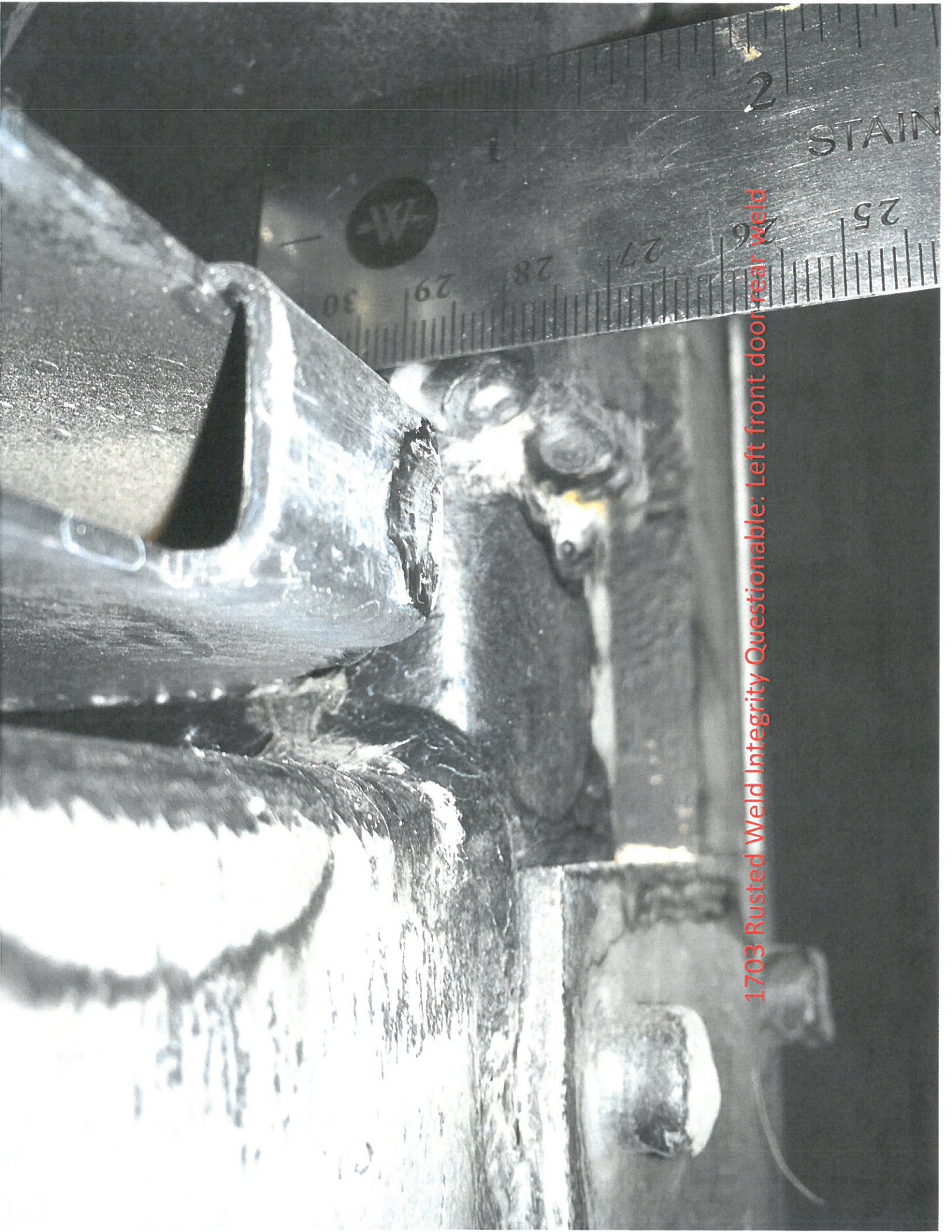




703 Rusted Weld Integrity Questionable and incomplete: Bridge Plate



1703 Engine Compartment

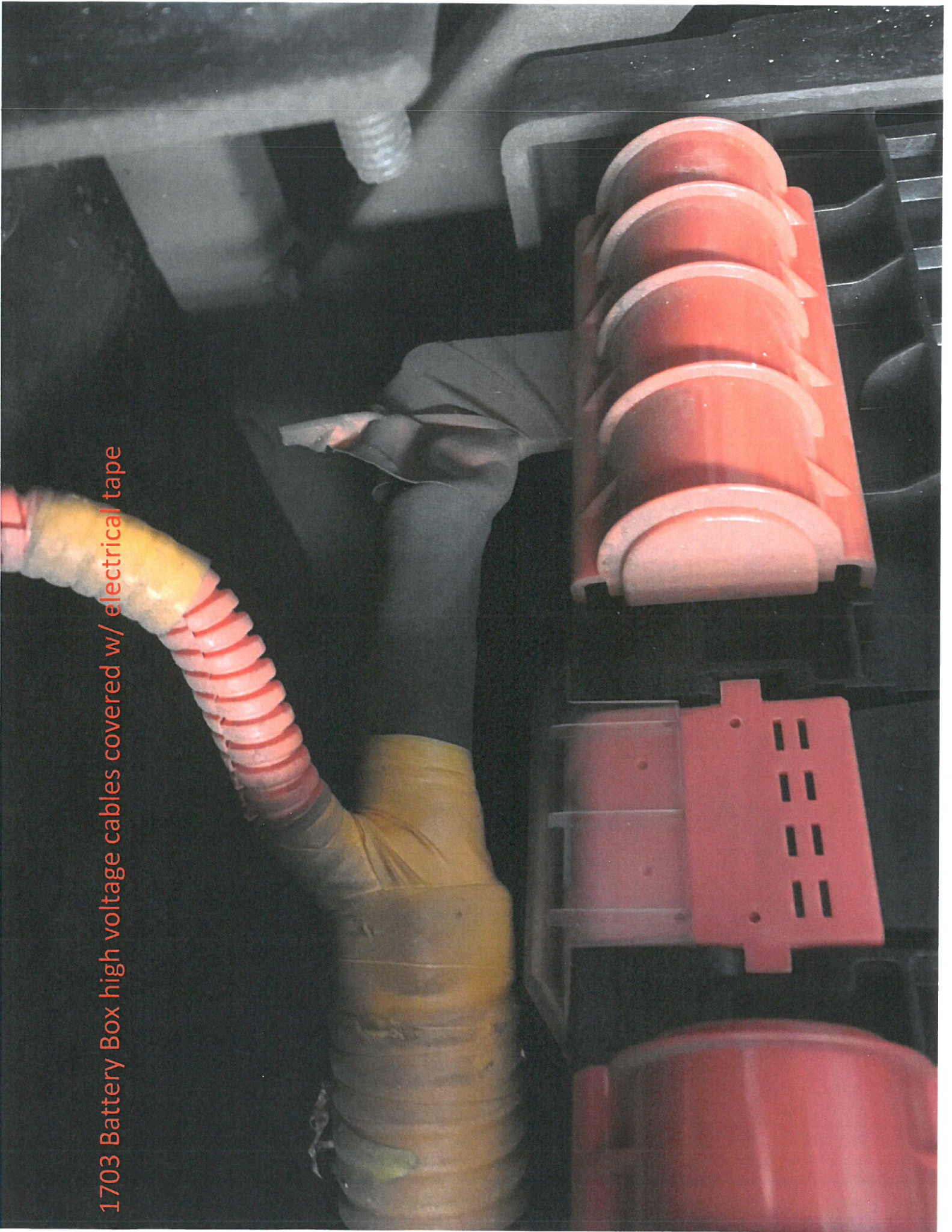


1703 Rusted Weld Integrity Questionable: Left front door rear weld

1703 all lines and hoses exposed to road debris

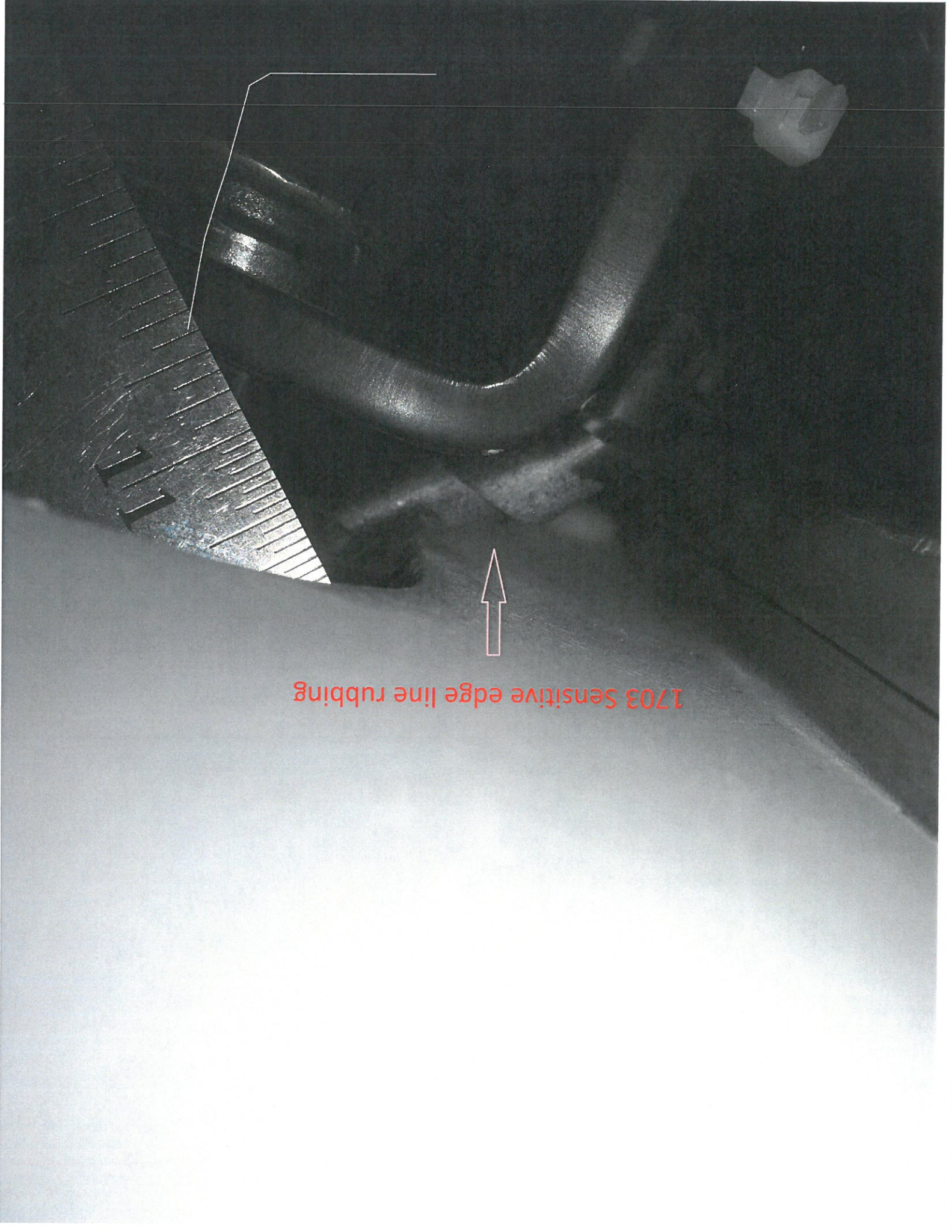


1703 Battery Box high voltage cables covered w/ electrical tape



1703 Left rear panel cracking, behind joint





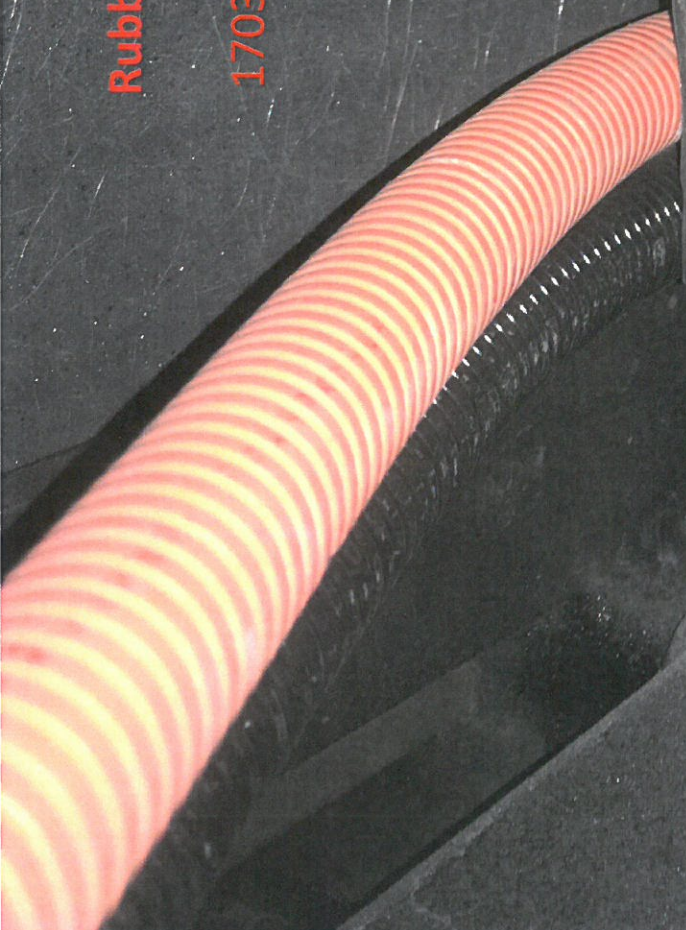
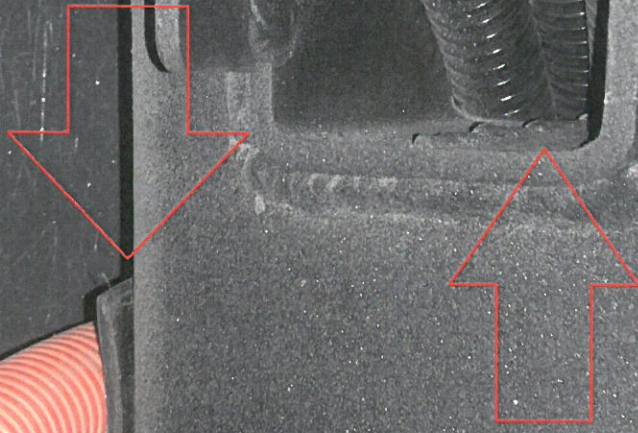
1703 Sensitive edge line rubbing

1703 Brake Lines Rubbing brake chamber

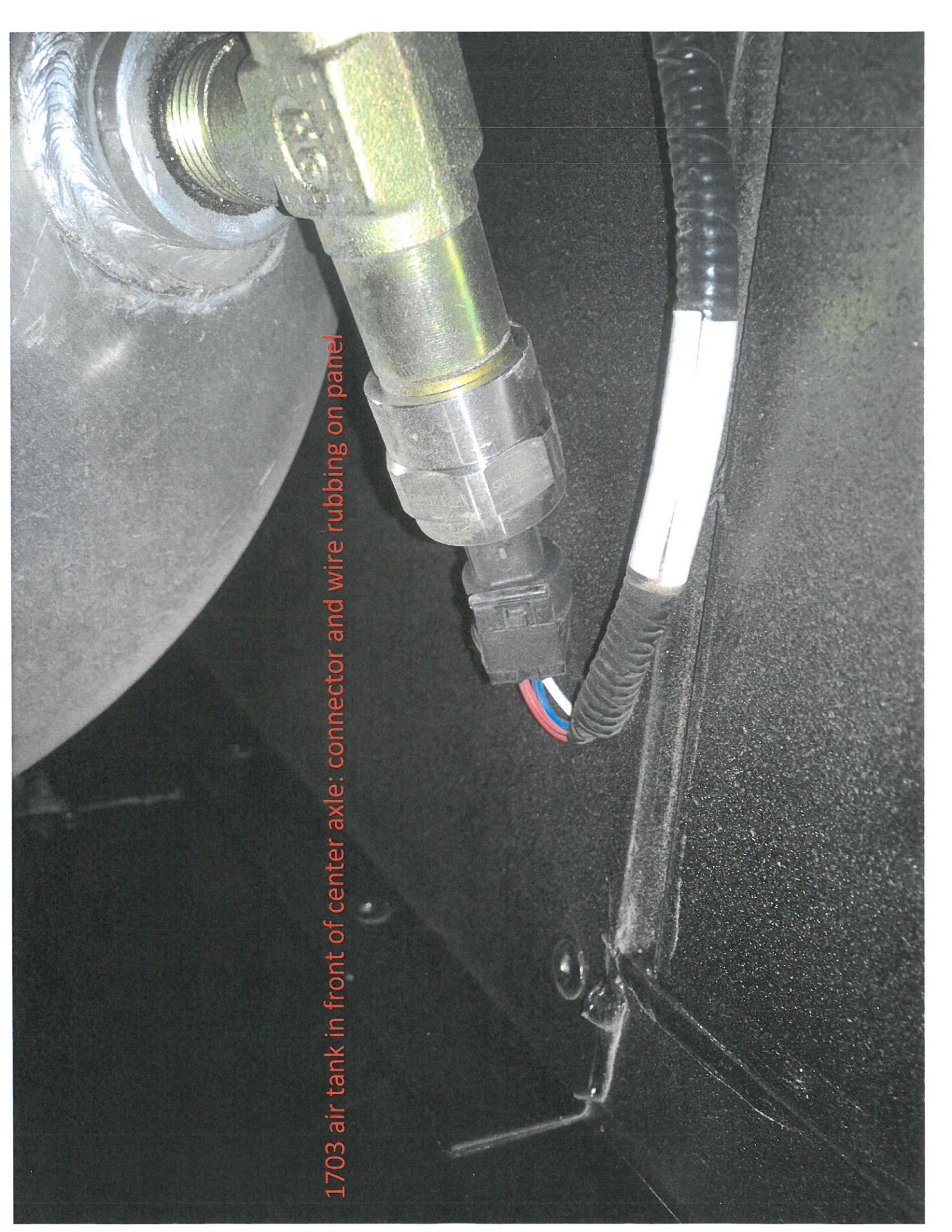


Rubbing on Frame

1703 In front of rear axle




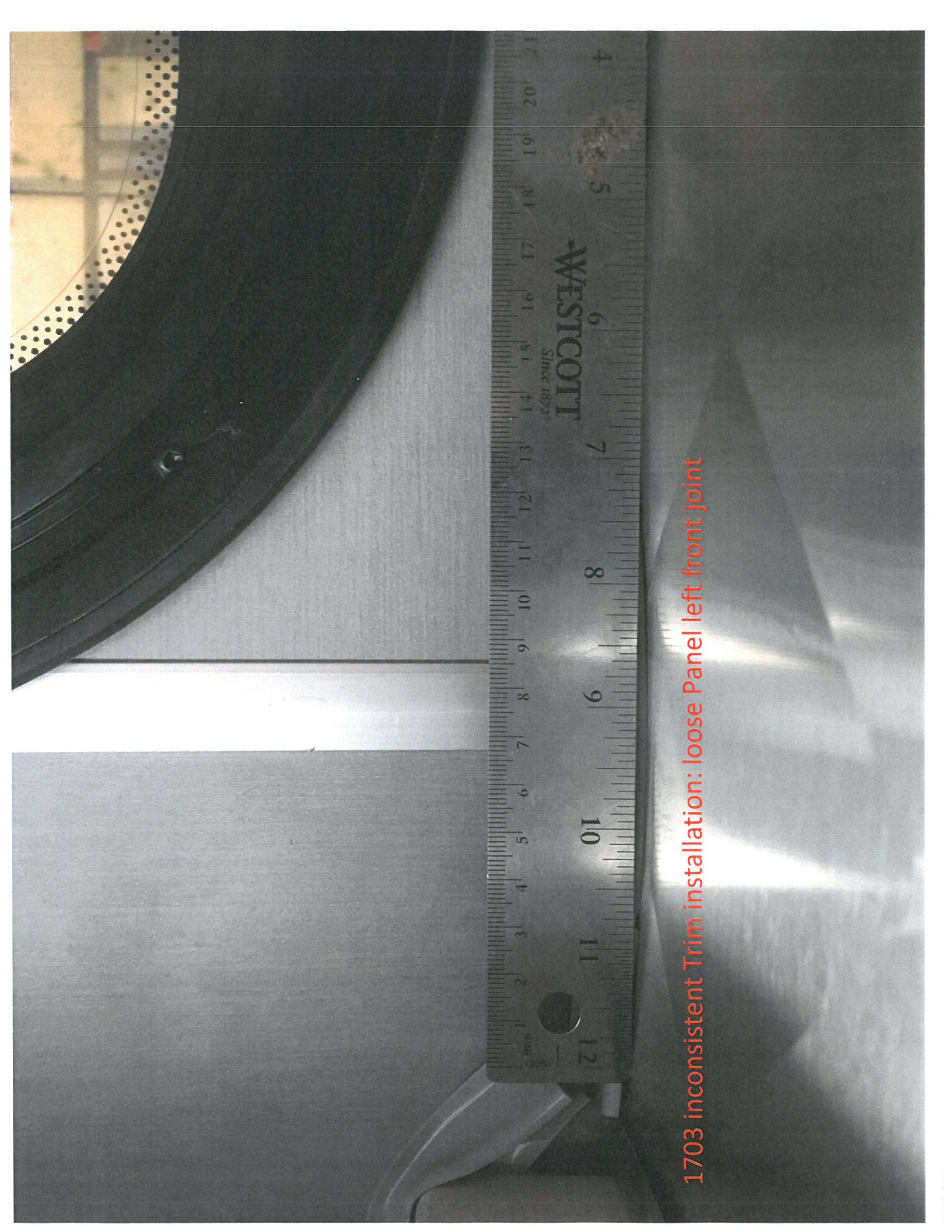
1703 air tank in front of center axle: connector and wire rubbing on panel





1703 Rear Brake relay valve lines rubbing frame

019010  2909110A10Z0G031



1703 inconsistent Trim installation: loose Panel left front joint

1703 behind left rear door: no foot space



1703 Left rear compartment Fire suppression line rubbing on frame





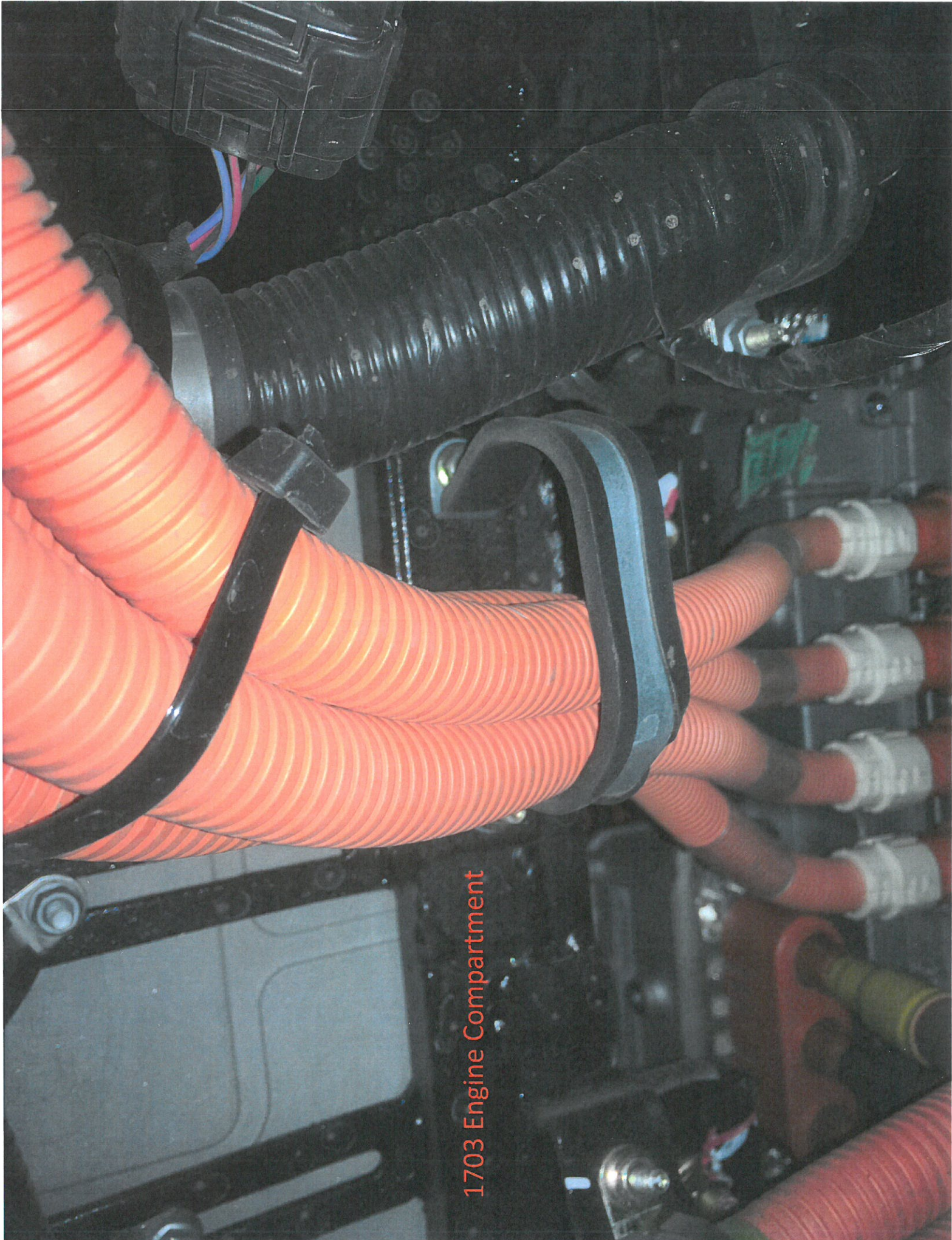
1703 Rusted Weld Integrity Questionable:
Left front door

1703 Engine Compartment

9M-1303236B 硅胶管 2017-08

ALFAGOMMA FLEXYO
10 12





1703 Engine Compartment



1703 Jack point is questionable