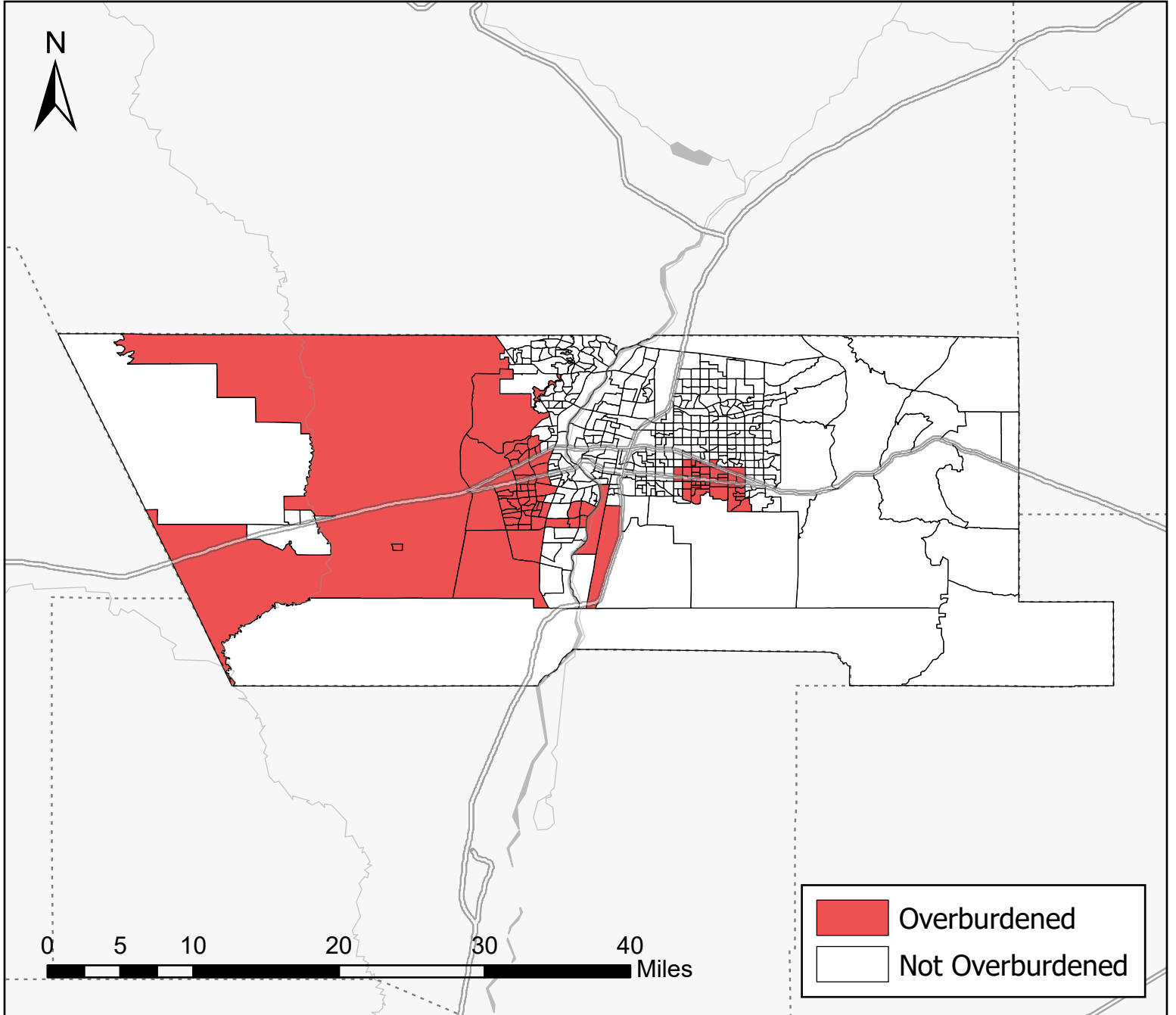
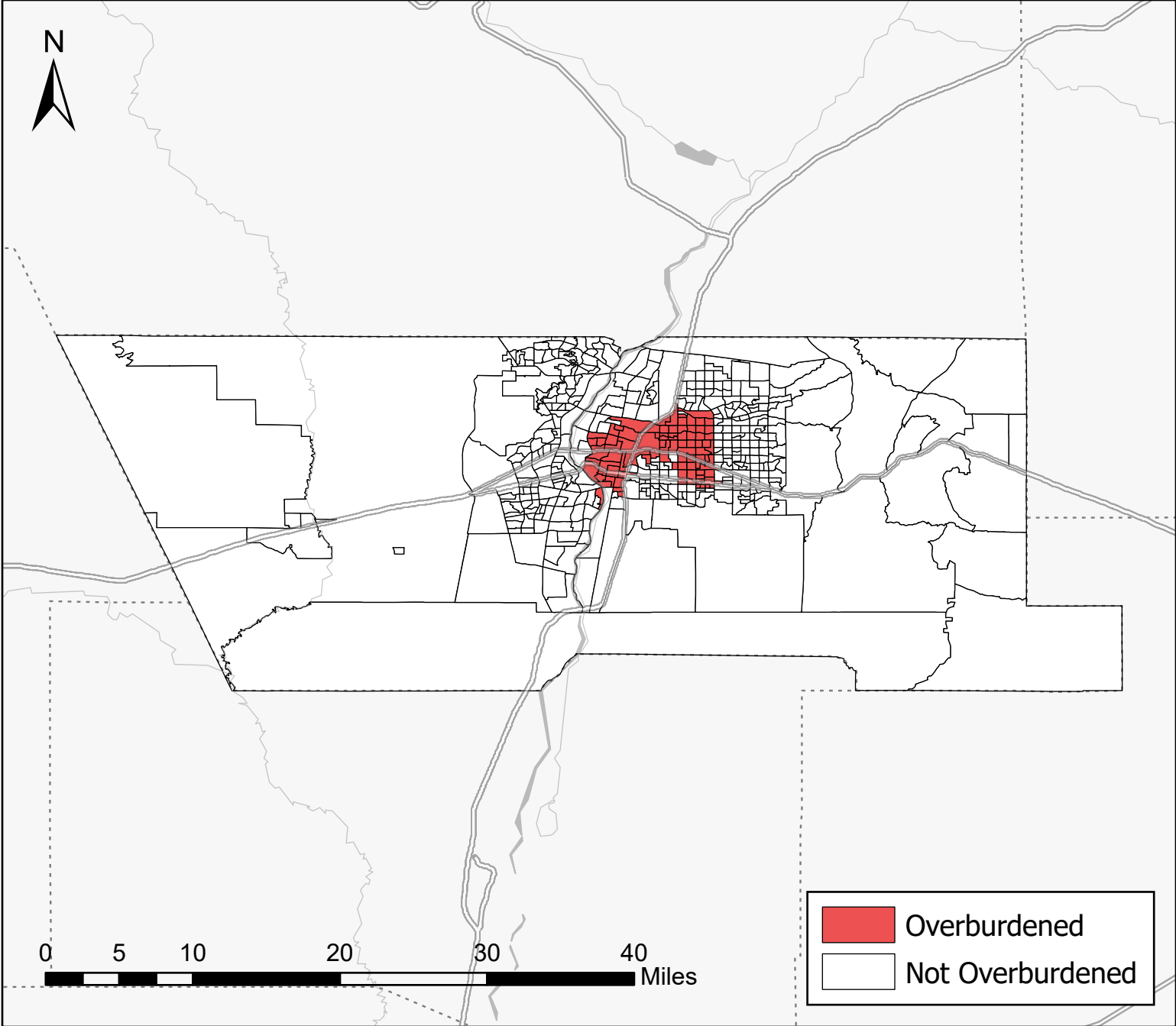


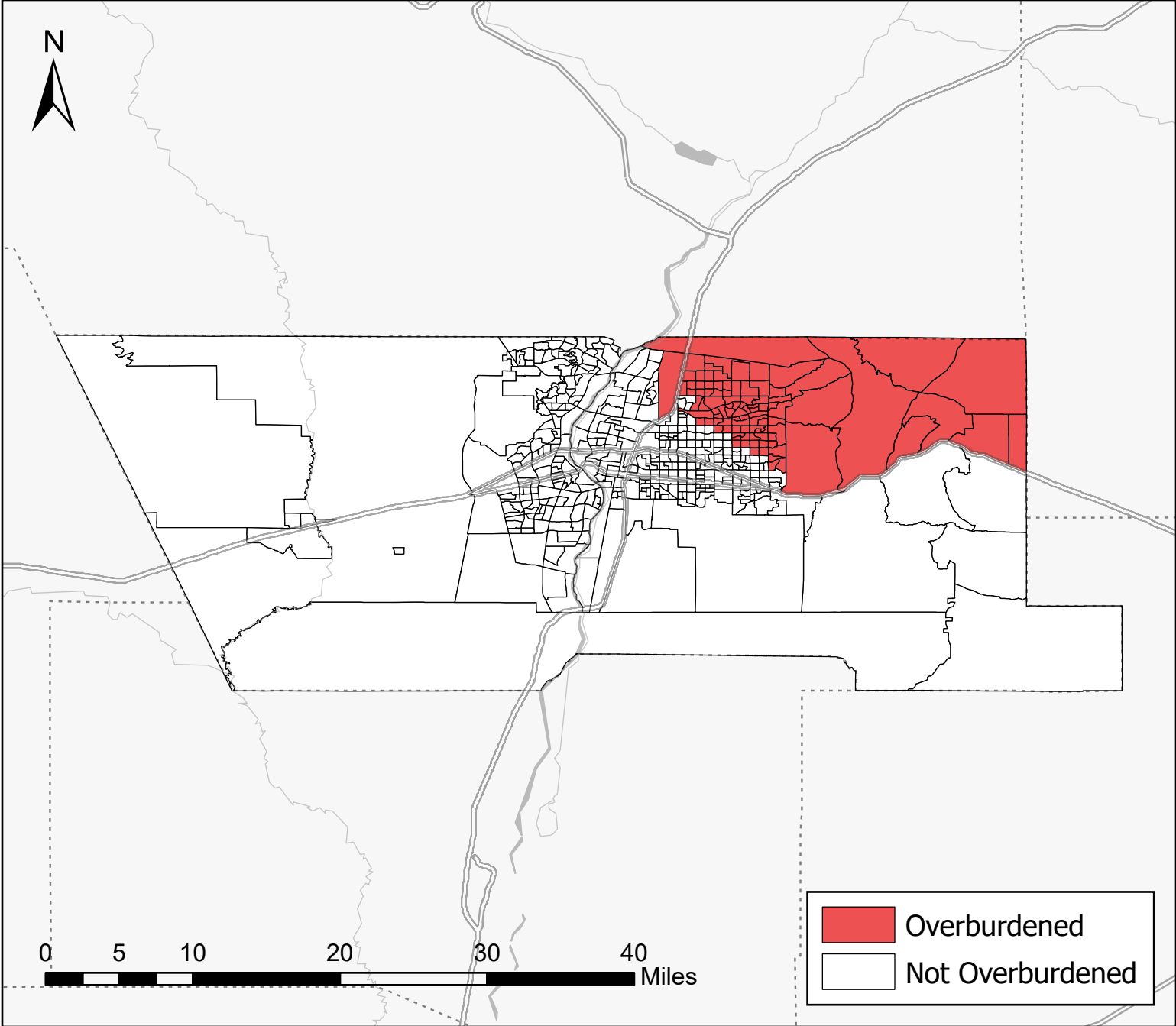
# Environmental - Air Toxics Emissions



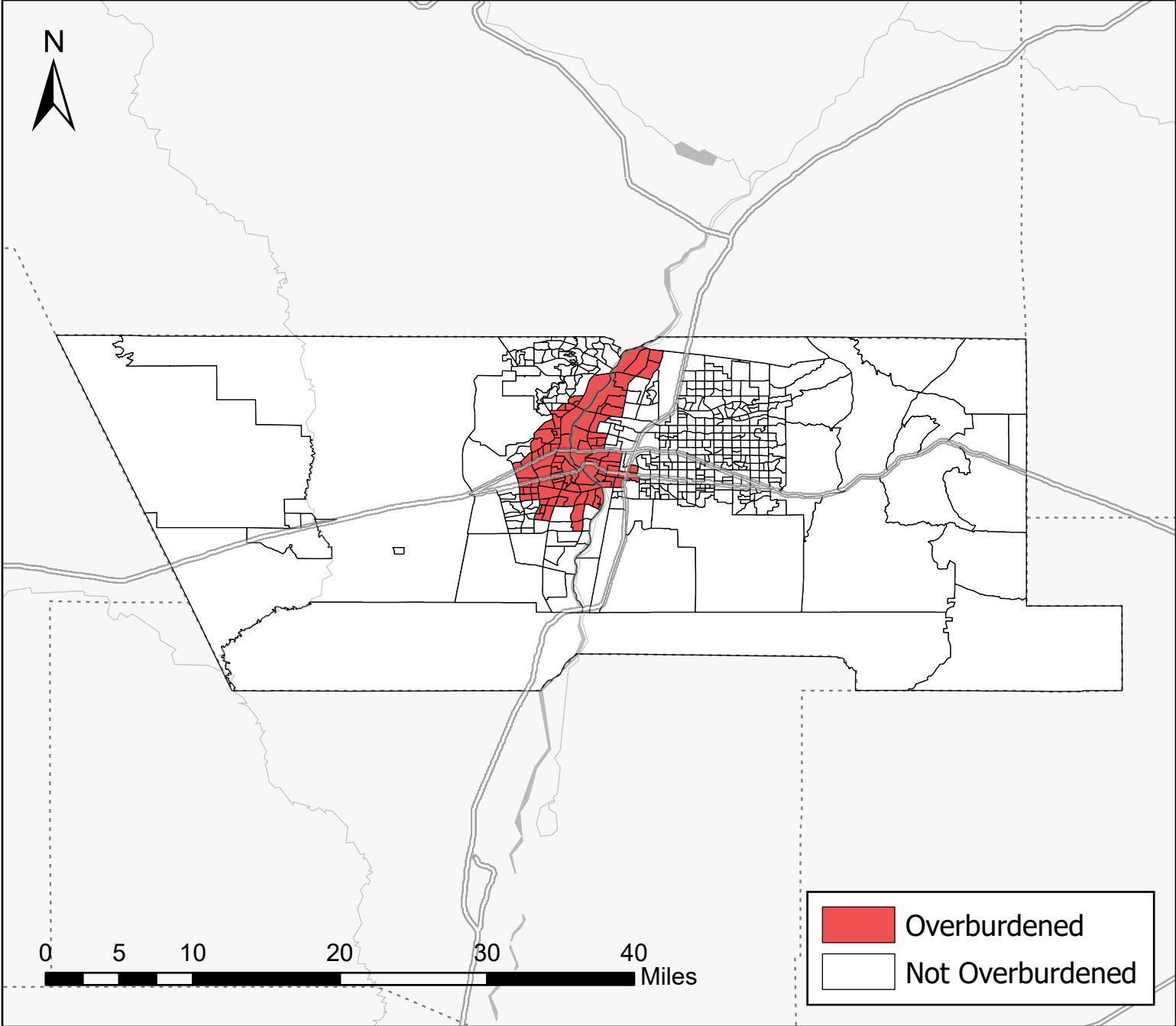
# Environmental - Diesel PM Concentrations



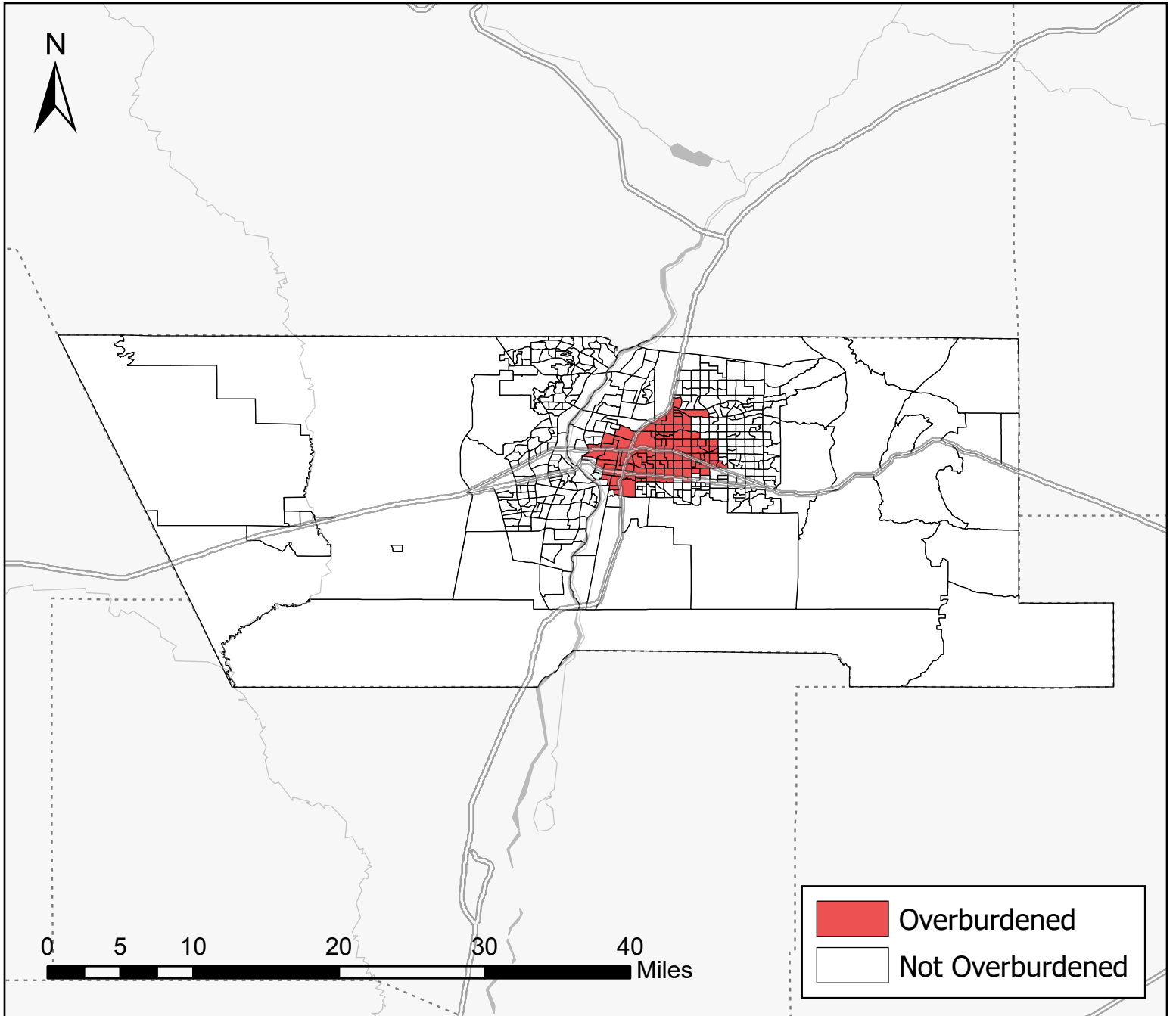
# Environmental - Ozone Concentrations



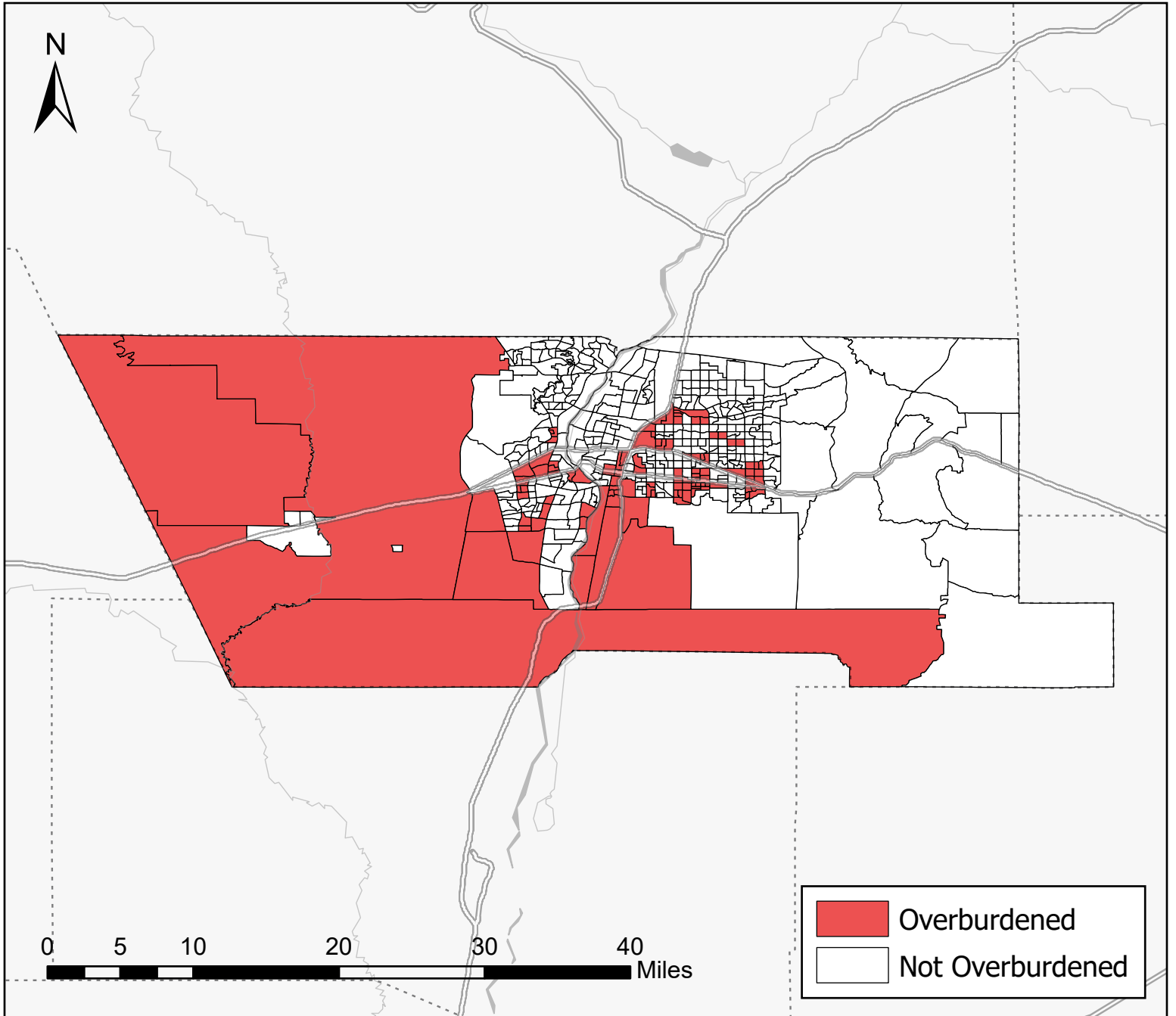
# Environmental - PM2.5 Concentrations



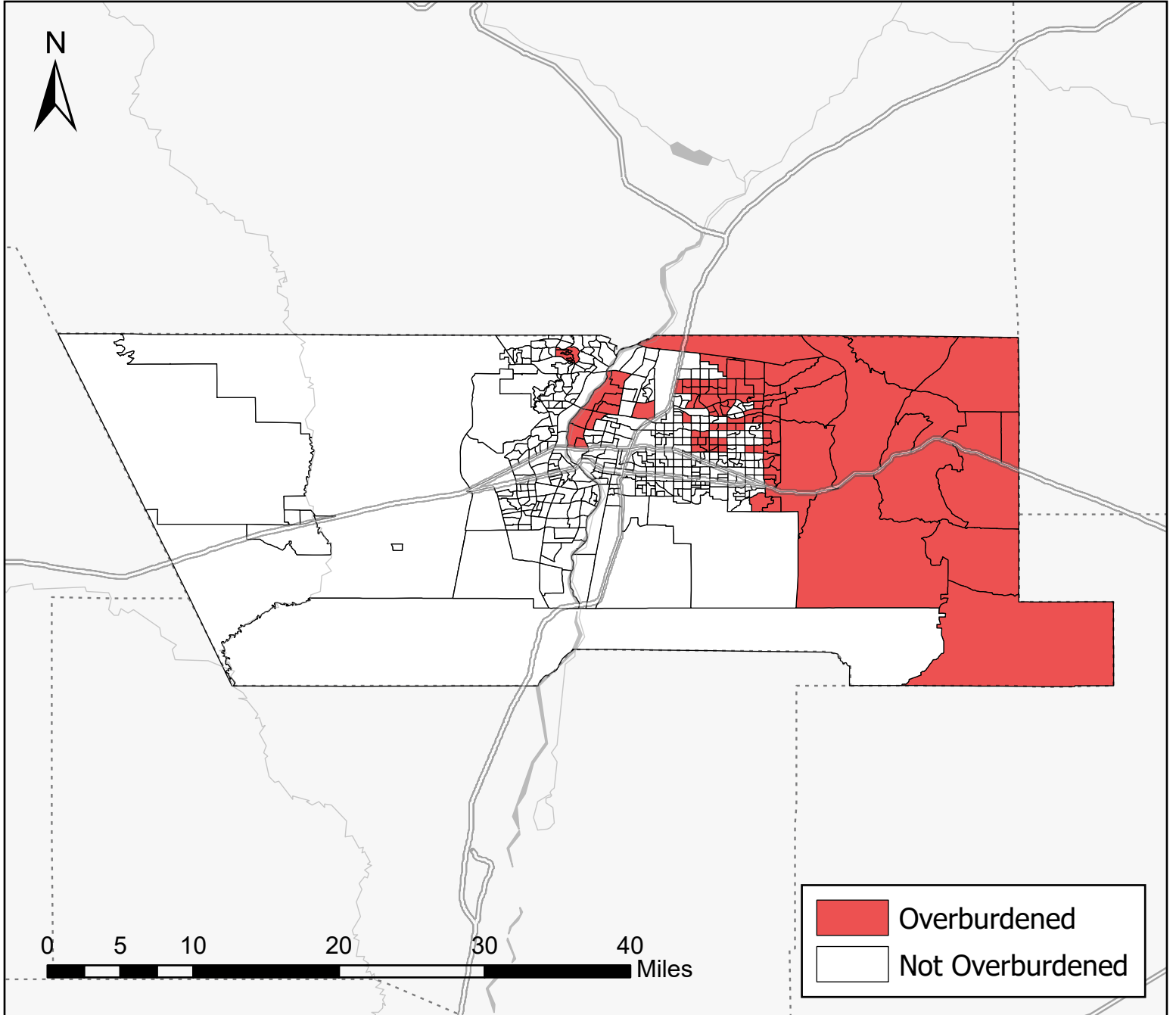
# Environmental - Traffic Proximity



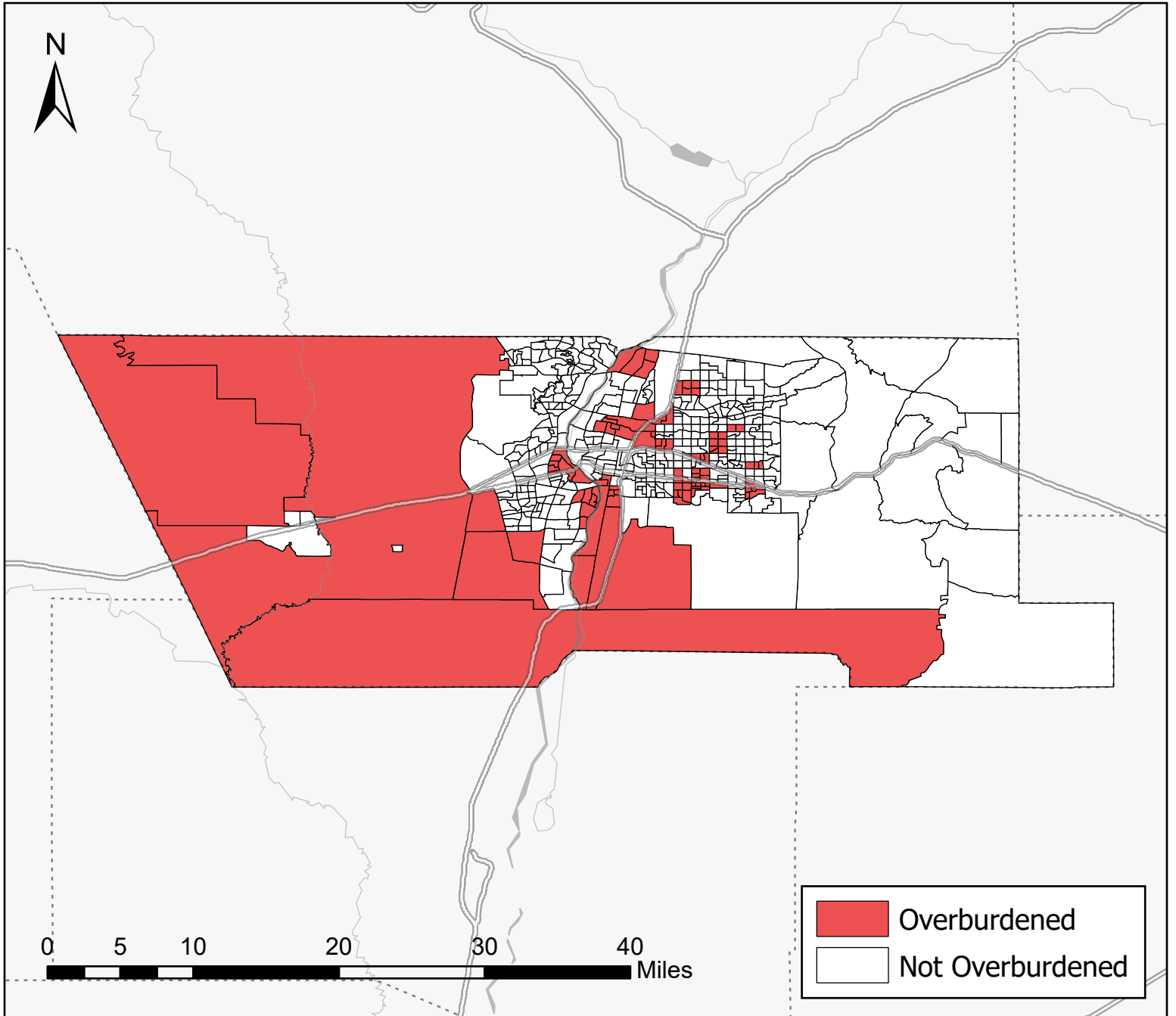
# Health - Asthma Prevalence



# Health - Cancer Prevalence

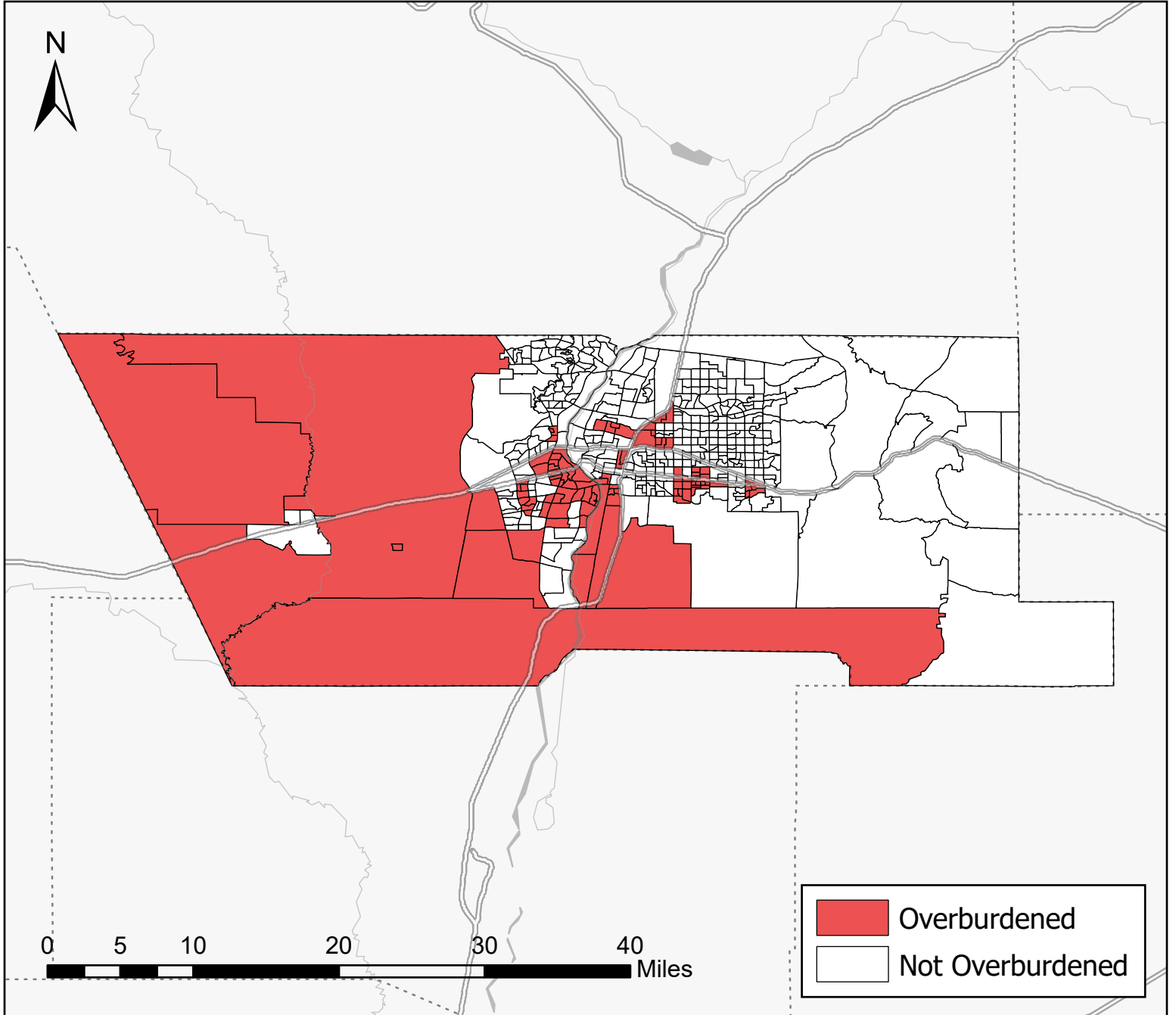


# Health - COPD Prevalence

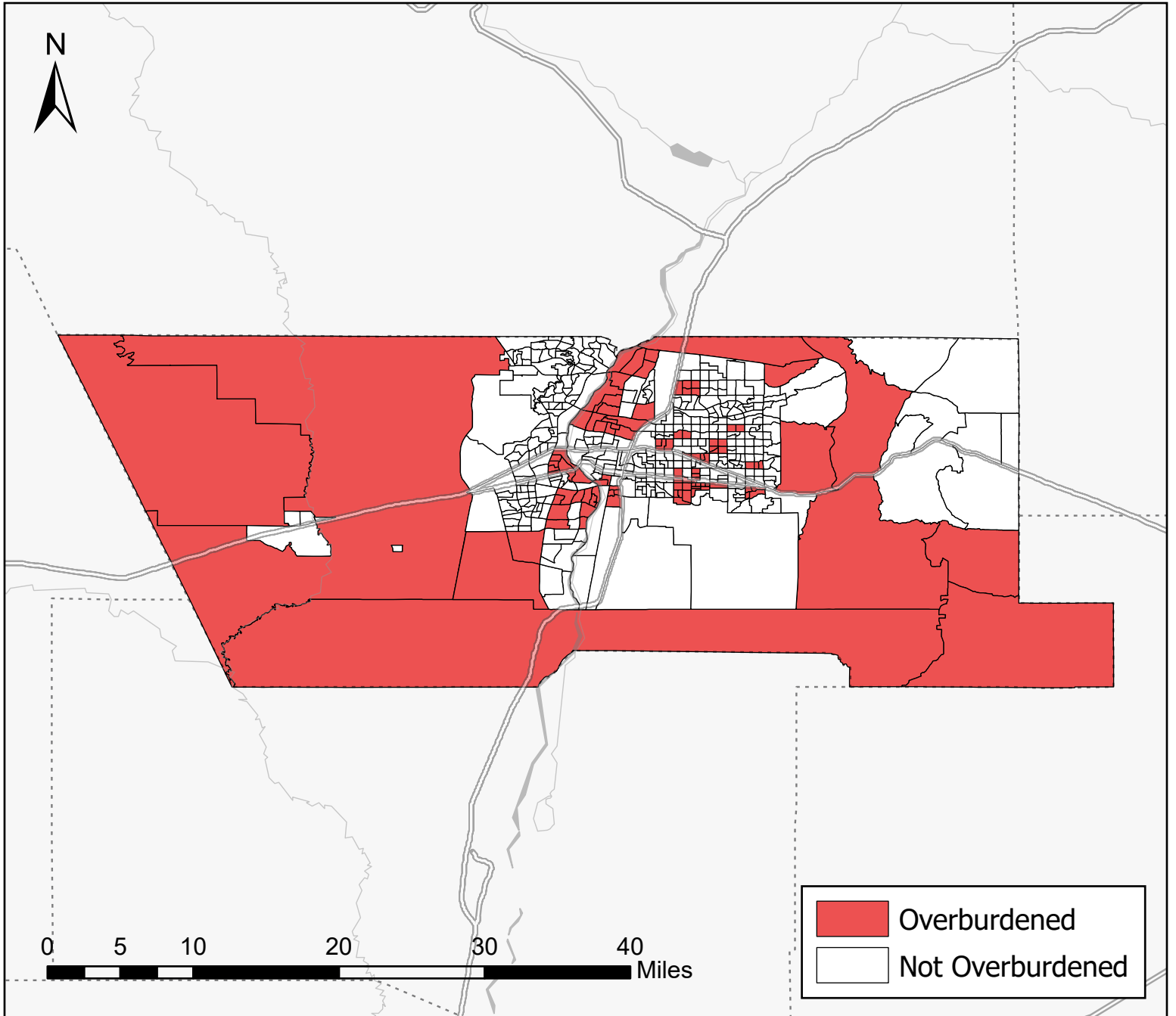




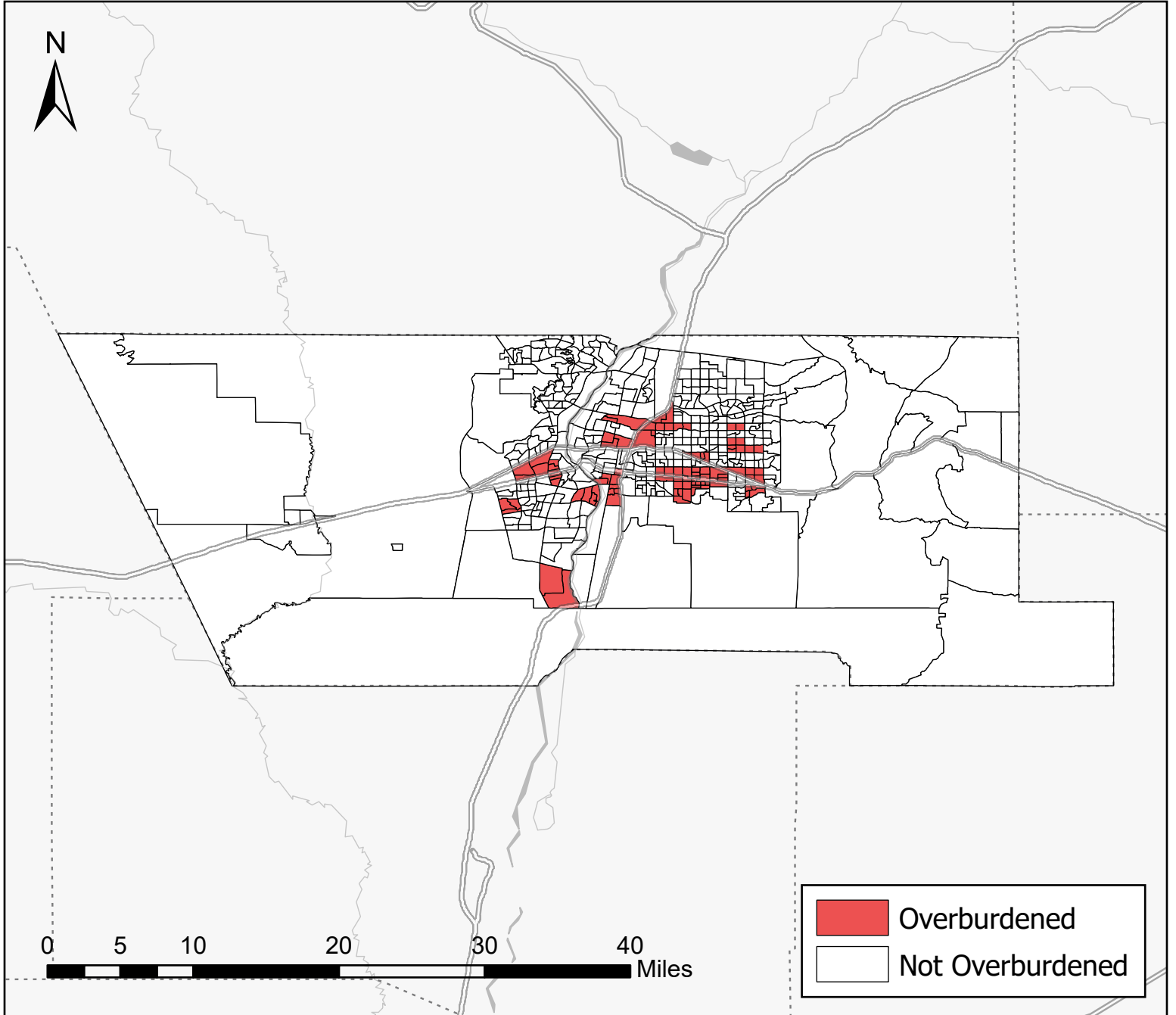
# Health - Disability Prevalence



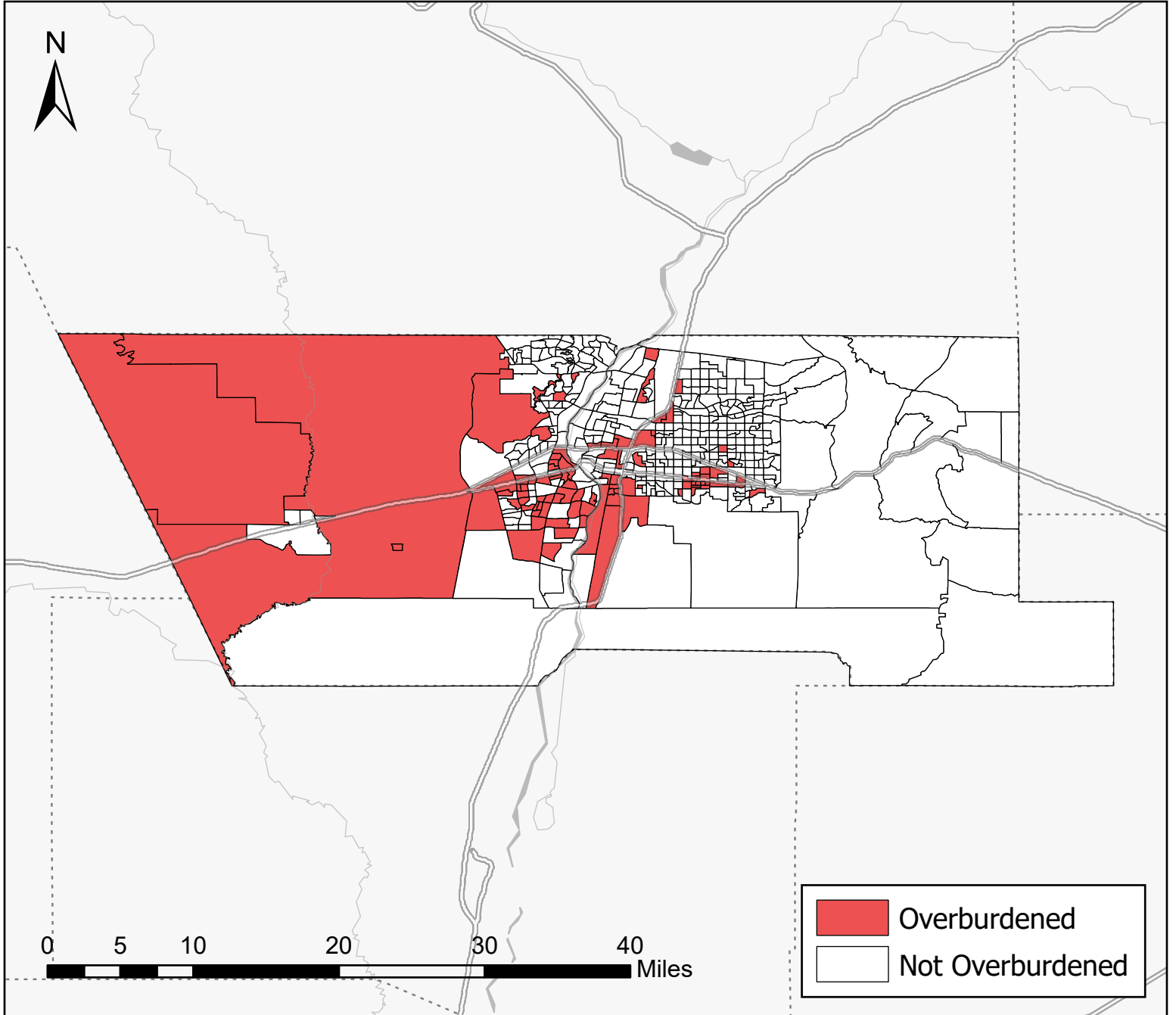
# Health - Heart Disease Prevalence



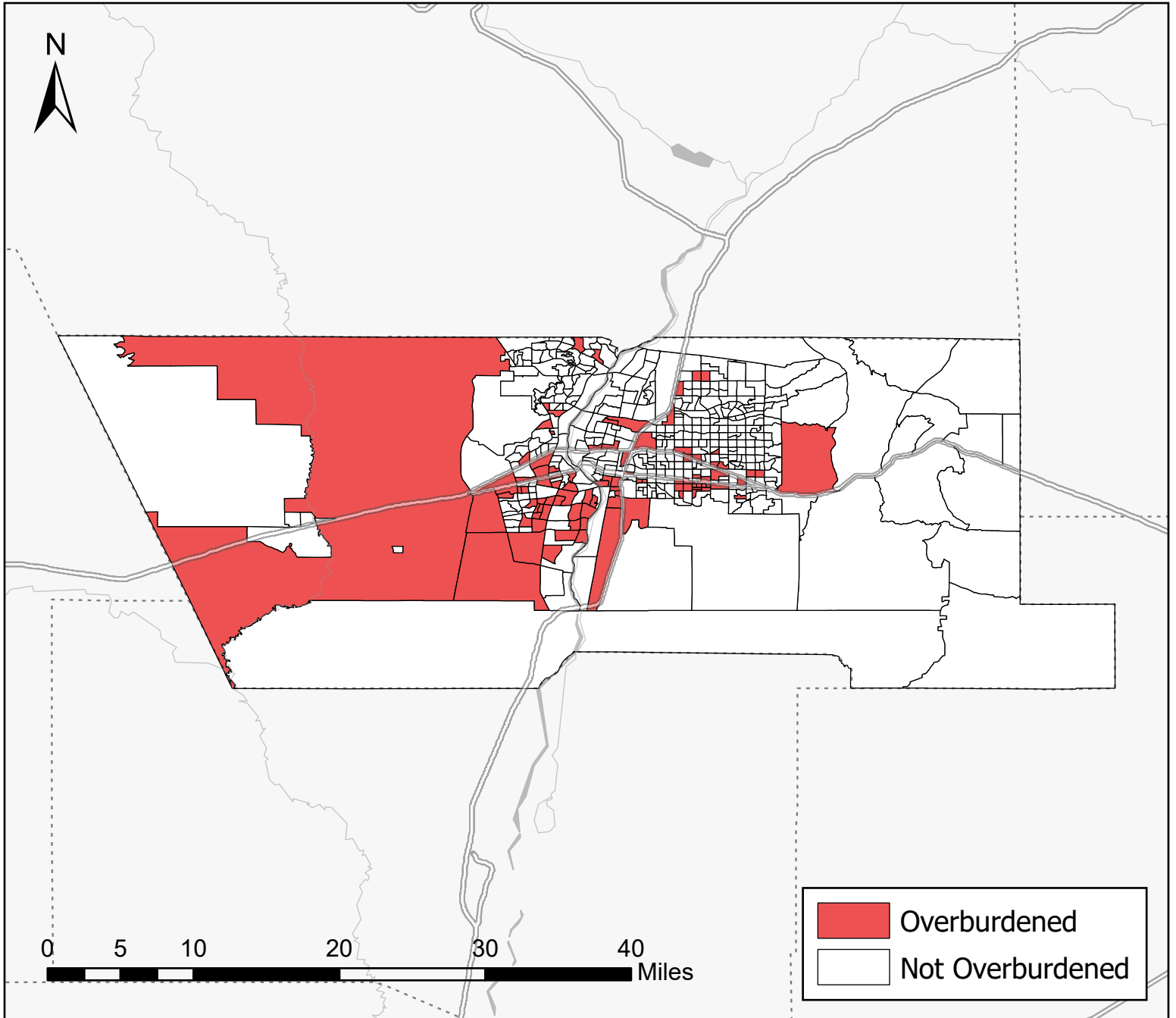
# Health - Low Life Expectancy



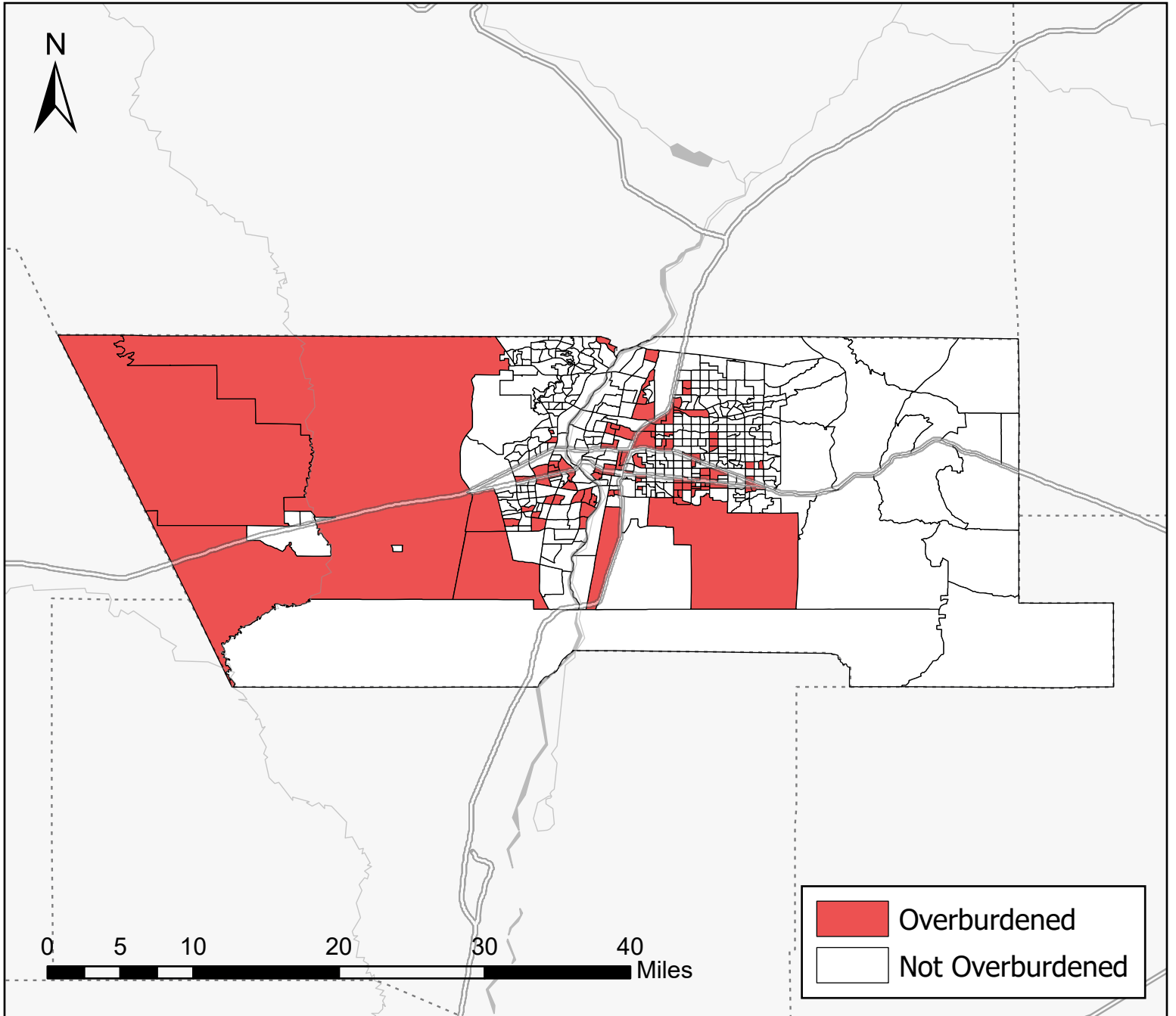
# Social Determinants - Did Not Complete High School



# Social Determinants - Limited English Proficiency



# Social Determinants - Low Income



# Social Determinants - People of Color

