

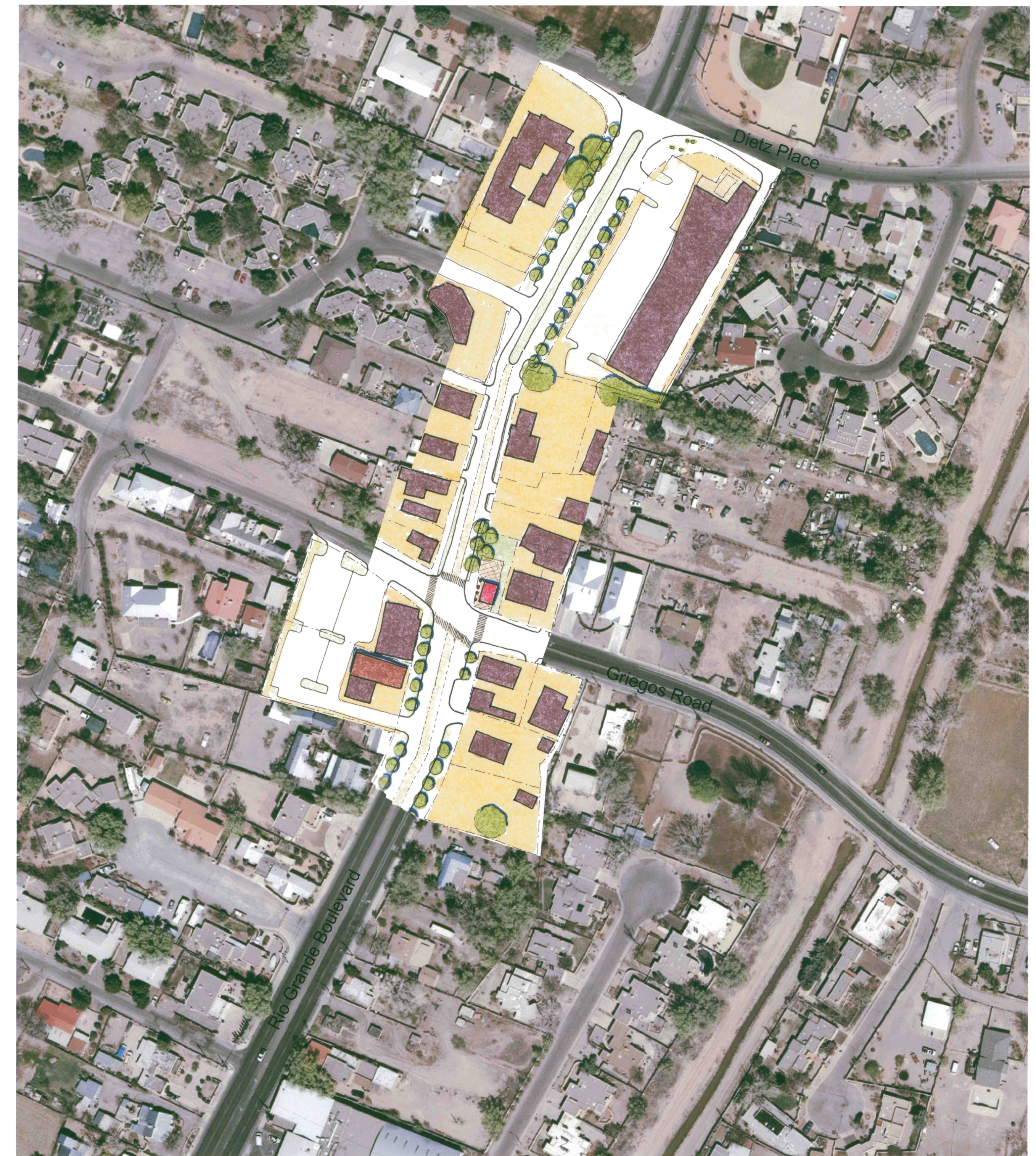
Mountain Road



Mountain Road

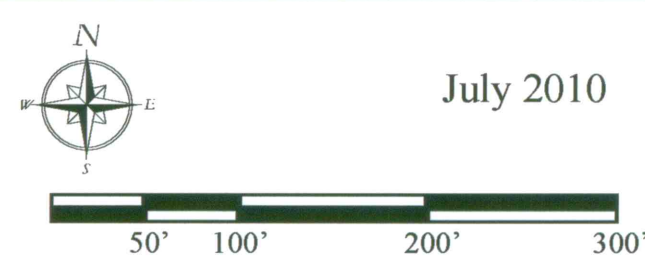


Matthew Avenue Focus Area  
Illustrative Plan



Los Griegos Focus Area  
Illustrative Plan

## Rio Grande Boulevard Corridor Master Plan



July 2010

DOVER, KOHL & PARTNERS  
town planning

1571 Sunset Drive, Coral Gables, FL 33143  
305.666.0446 [www.doverkohl.com](http://www.doverkohl.com)



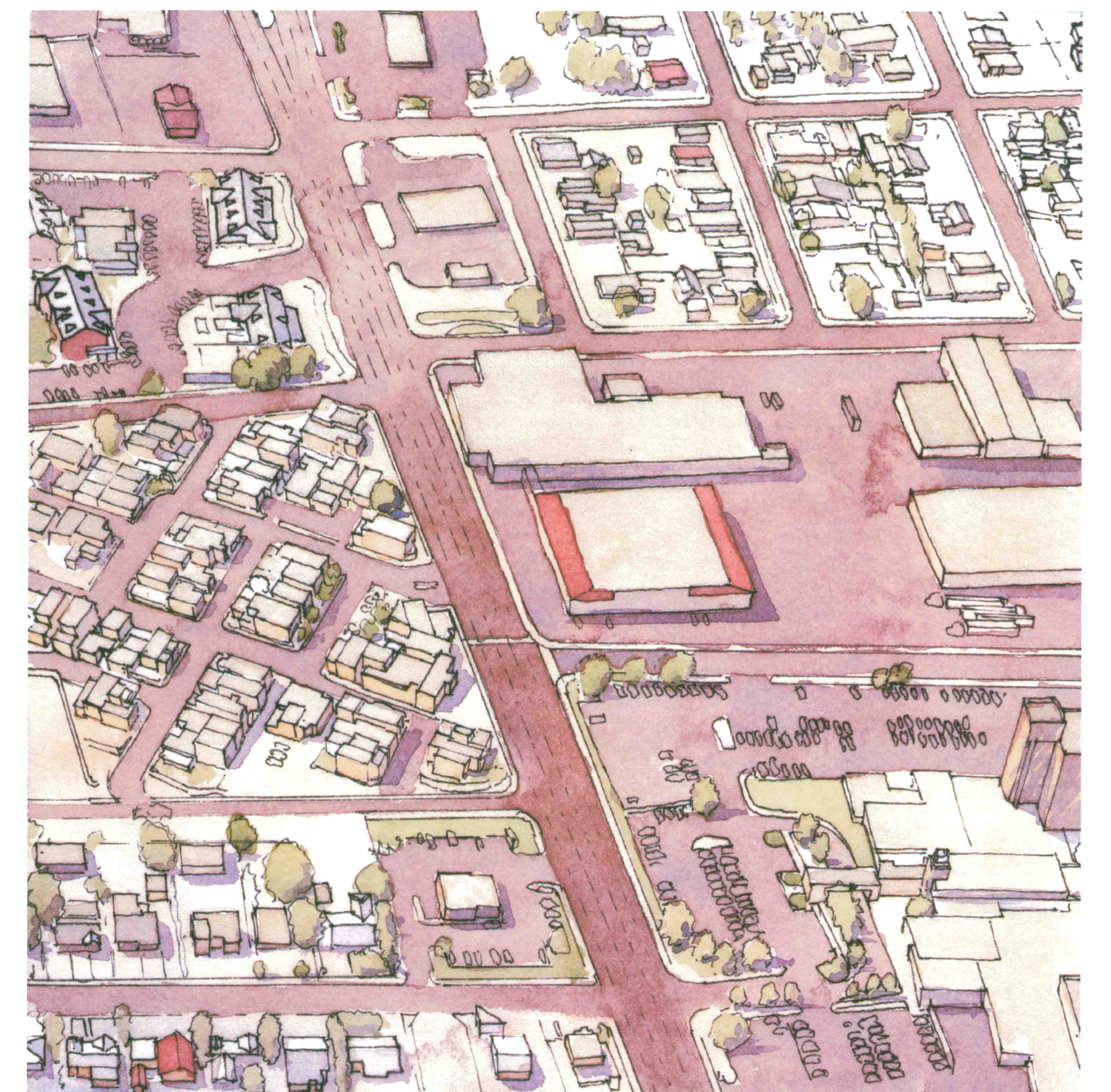
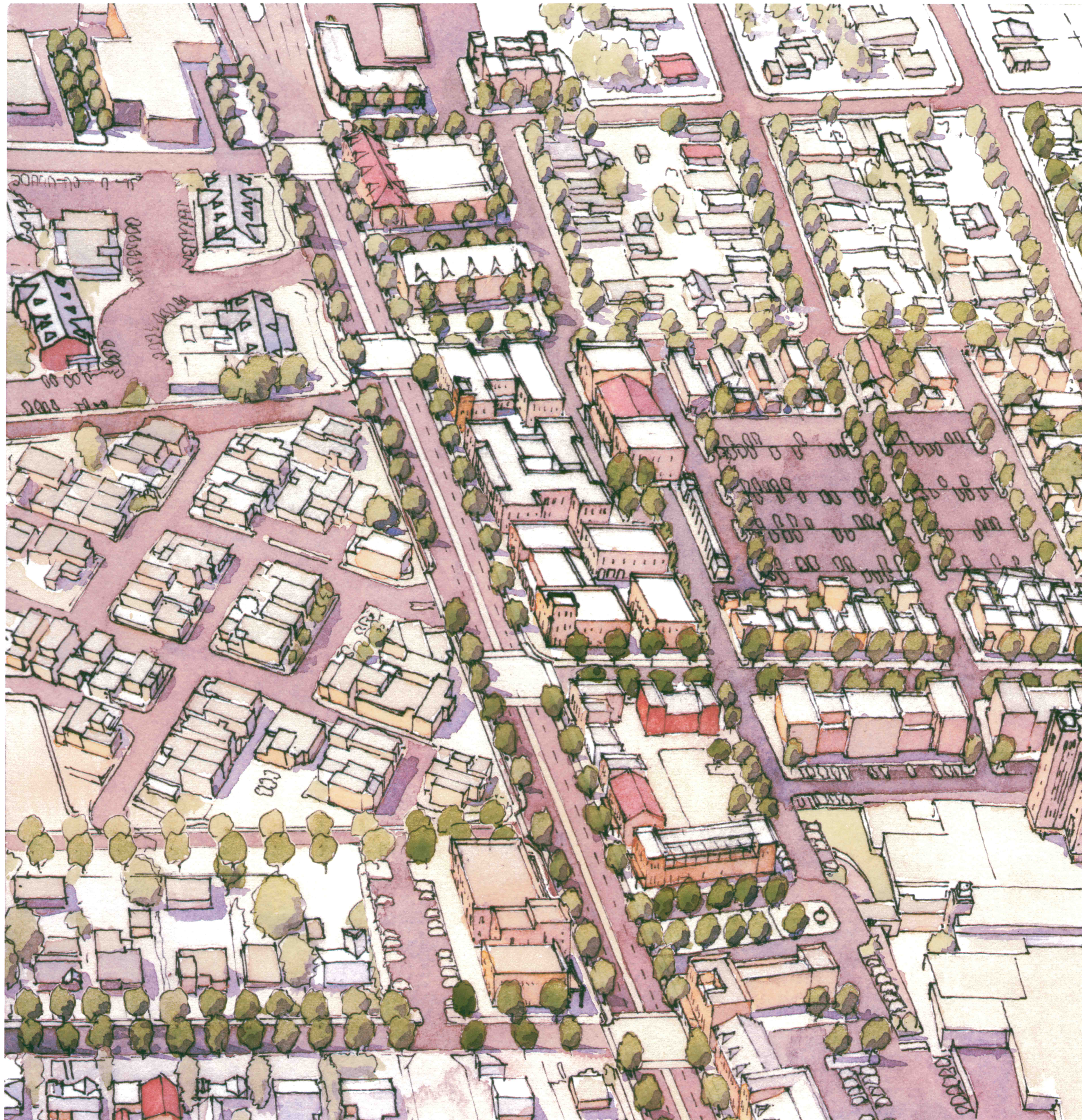
July 2010

## Rio Grande Boulevard Renderings

Los Duranes Focus Area

DOVER, KOHL & PARTNERS  
town planning

1571 Sunset Drive, Coral Gables, FL 33143  
305.666.0446 [www.doverkohl.com](http://www.doverkohl.com)



## Rio Grande Boulevard Corridor Master Plan

### Old Town Focus Area

July 2010

DOVER, KOHL & PARTNERS  
town planning

1571 Sunset Drive, Coral Gables, FL 33143  
305.666.0446 [www.doverkohl.com](http://www.doverkohl.com)



July 2010

## Rio Grande Boulevard Corridor Master Plan

Los Griegos Focus Area

DOVER, KOHL & PARTNERS  
town planning

1571 Sunset Drive, Coral Gables, FL 33143  
305.666.0446 [www.doverkohl.com](http://www.doverkohl.com)



July 2010

50' 100' 200' 300'

# Rio Grande Boulevard Corridor Master Plan Old Town North Focus Area Illustrative Plan

DOVER KOHL & PARTNERS  
town planning  
1571 Sunset Drive, Coral Gables, FL 33143  
305.666.0446 www.doverkohl.com

© Copyright 2010 by V or Dover and Joseph Kohl. Images, artworks, diagrams and other items produced by Dover, Kohl & Partners are for purposes of conceptual illustration only and do not represent a guarantee or warranty of any kind. These items are instruments of service which remain the property of Dover, Kohl & Partners and its sub-contractors and shall not have any control over and shall not be responsible for construction means, procedures, safety precautions, or legal disclosures in the implementation of the project, or for errors or omissions by future consultants, developers, or other parties.

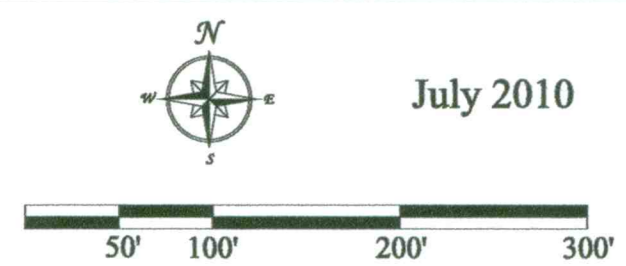


July 2010

# Rio Grande Boulevard Corridor Master Plan Los Duranes Focus Area Illustrative Plan

DOVER, KOHL & PARTNERS  
town planning  
1571 Sunset Drive, Coral Gables, FL 33143  
305.666.0446 [www.doverkohl.com](http://www.doverkohl.com)

© Copyright 2010 by Victor Dover and Joseph Kohl. Images, artworks, diagrams and other items produced by Dover, Kohl & Partners are for purposes of conceptual illustration only and do not represent a guarantee of any kind. These items are instruments of service which remain the property of Dover, Kohl & Partners and may not be duplicated without permission. Dover, Kohl & Partners and its sub-consultants shall not have any control over and shall not be responsible for construction means, procedures, safety precautions, or legal disclosures in the implementation of the project, or for errors or omissions by future consultants, developers, or government.



# Rio Grande Boulevard Corridor Master Plan

## Los Griegos Focus Area

DOVER, KOHL & PARTNERS  
town planning  
1571 Sunset Drive, Coral Gables, FL 33143  
305.666.0446 [www.doverkohl.com](http://www.doverkohl.com)

© Copyright 2010 by Victor Dover and Joseph Kohl. Images, artworks, diagrams and other items produced by Dover, Kohl & Partners are for purposes of conceptual illustration only and do not represent a guarantee of any kind. These items are instruments of service which remain the property of Dover, Kohl & Partners and may not be duplicated without permission. Dover, Kohl & Partners and its sub-consultants shall not have any control over and shall not be responsible for construction means, procedures, safety precautions, or legal disclosures in the implementation of the project, or for errors or omissions by future consultants, developers, or government.

TABLE #4

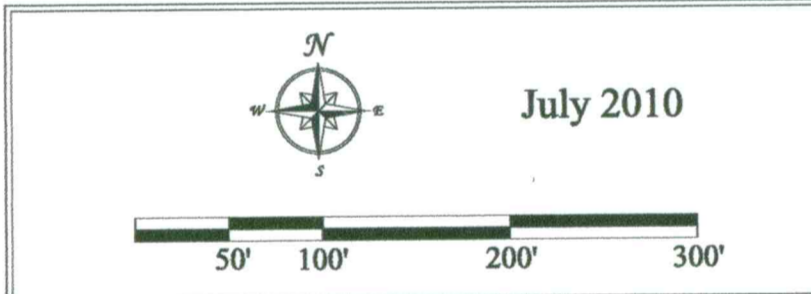
1. CONNECTIVITY OF EAST & WEST BID GRANDE BLVD. CONNECTIVITY = PEDESTRIAN,
2. SLOWER TRAFFIC
3. BIKE PATH, ~~AND~~ SIDE WALKS
4. MULTIPLE DRIVEWAYS.
5. PHYSICAL BARRIER BETWEEN PEDESTRIANS & VEHICLES,



Los Candelarias Focus Area



Matthew Avenue Focus Area



# Rio Grande Boulevard Corridor Master Plan

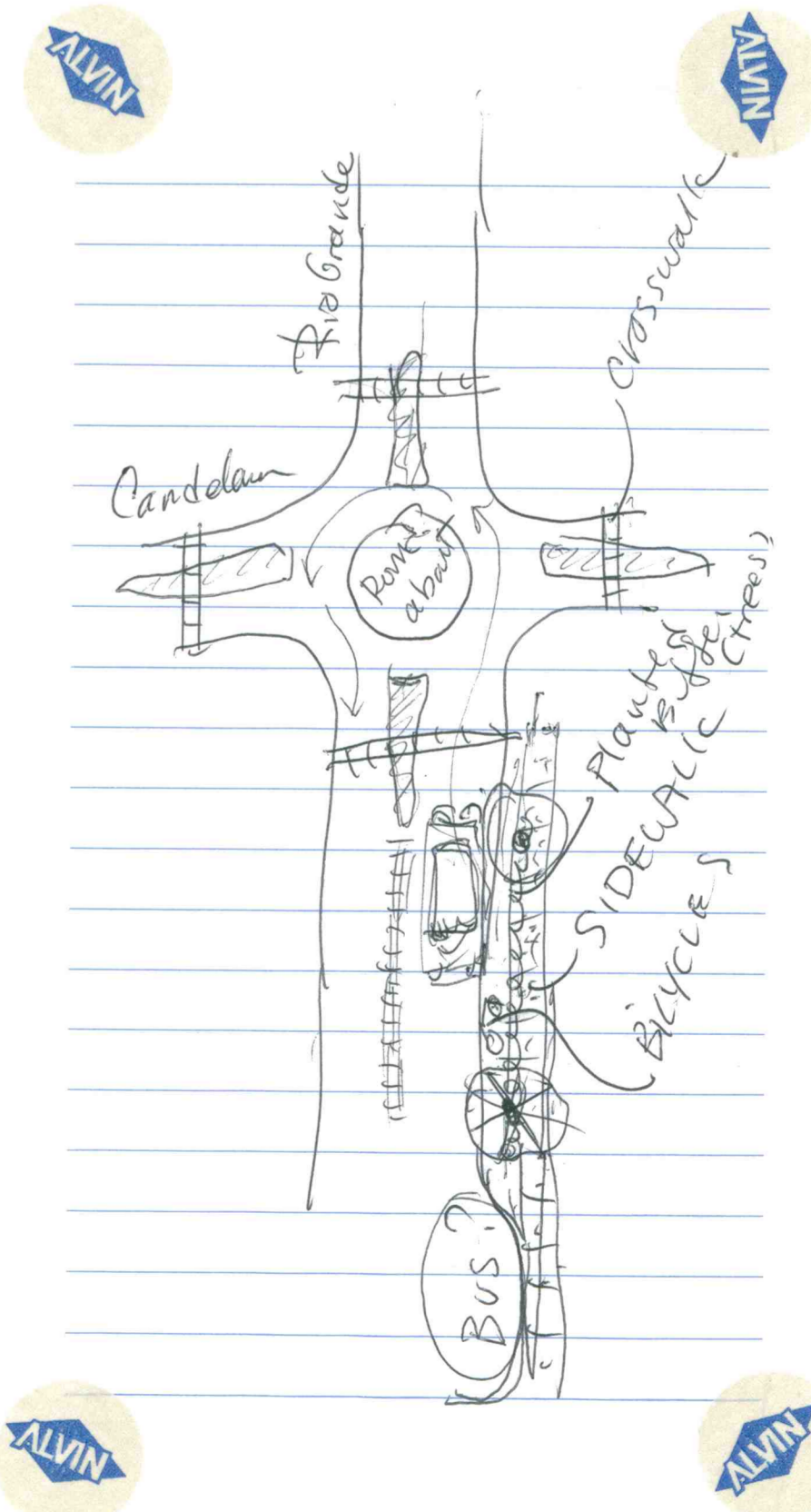
DOVER, KOHL & PARTNERS  
town planning  
1571 Sunset Drive, Coral Gables, FL 33143  
305.666.0446 www.doverkohl.com

© Copyright 2010 by Victor Dover and Joseph Kohl. Images, networks, diagrams and other items produced by Dover, Kohl & Partners are for purposes of conceptual illustration only and do not represent a guarantee of any kind. These items are instruments of service which remain the property of Dover, Kohl & Partners and may not be duplicated without permission. Dover, Kohl & Partners and its sub-consultants shall not have any control over and shall not be responsible for construction means, procedures, safety precautions, or legal disclosures in the implementation of the project, or for errors or omissions by future consultants, developers, or government.

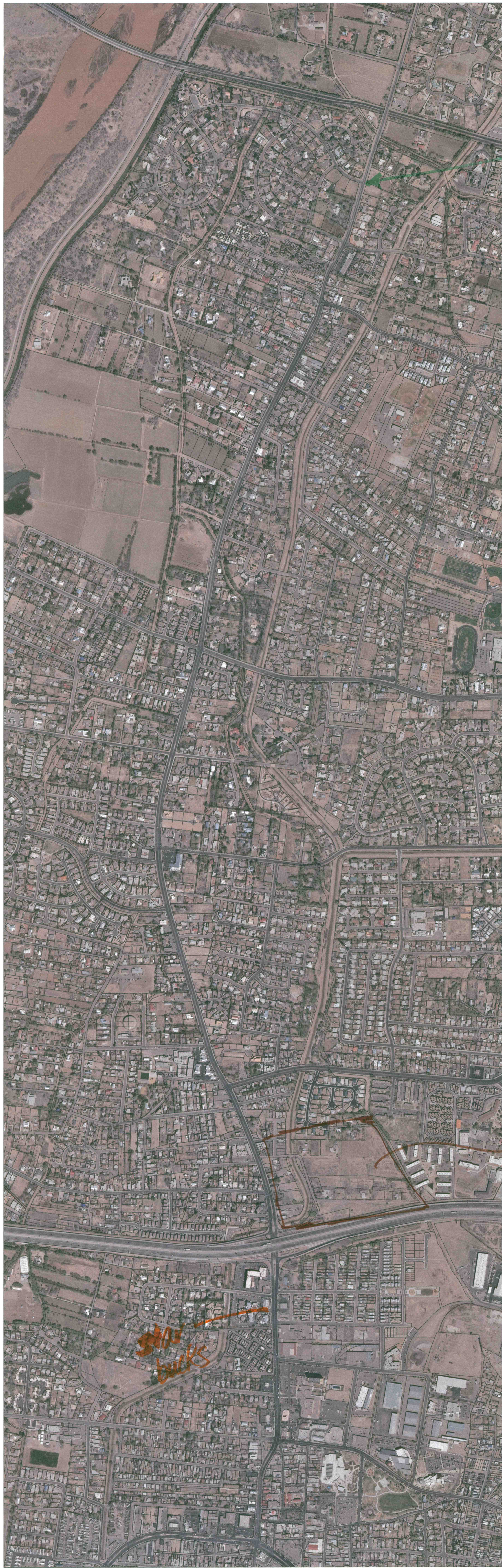
- Rio's design*
1. Narrow to 2 lanes from Indian School north
  2. added medians
  3. In favor of round about @ Candelaria (consider Indian School also)
  4. " @ village center
  5. Burrowing power lines
  6. Support for open space, agricultural use of existing open land
- Ultimate support of rural ecotone

TAB 2-7

MATTHEW TO CANDELARIA







Griegos Drain  
Montano Road  
Griegos Lateral  
Dietz Place  
Griegos Road  
Candelaria Road  
Matthew Avenue  
Alameda Drain  
Indian School Road  
Interstate 40 / Coronado Freeway  
Aspen Avenue  
Mountain Road

2 lanes  
w/ Ped/bike  
to 1 side

wide area -  
gravel path  
curb or barrier separates.  
meanders  
wide for people + bikes

walkways - poles out!  
discontinuous  
falling apart  
narrow

need continuity  
Transit: trolley's - quicker access  
smaller buses - more routes  
south direction - efficient  
north direction - large loop takes to long  
2nd Street - expressway  
get traffic off Rio Grande  
issues with sight distance.

Table # 3 (Theresa, presenter)

Four lanes from Freeway to Indian School then two-lane north. This is not a "thru-way" or "race way". Wide area with curb/gravel on one side or the other so that roadway increases pedestrian safety/comfort. Don't affect property owners. Remove utility poles from walkways. Improve walkways, make more continuous. Trolleys or other transit vehicles needed not just on main corridor but also on side streets. Huge busses often not full. Signage needs to be improved. Wayfinding.

Matthew area: Commercial development should stop in this area. Intersection of Don Quixote needs to be rethought. Roundabout may create problems for people because it encourages continuous flow of traffic. LED lights to signify pedestrian crossings. Destination café or gathering area. Maybe have bike/ped median. Enforcement of traffic laws is needed. Maybe 3 lanes (two lanes + turning lanes) in this section, as an alternative to median street section. Right turn on reds (issue with sight distance).

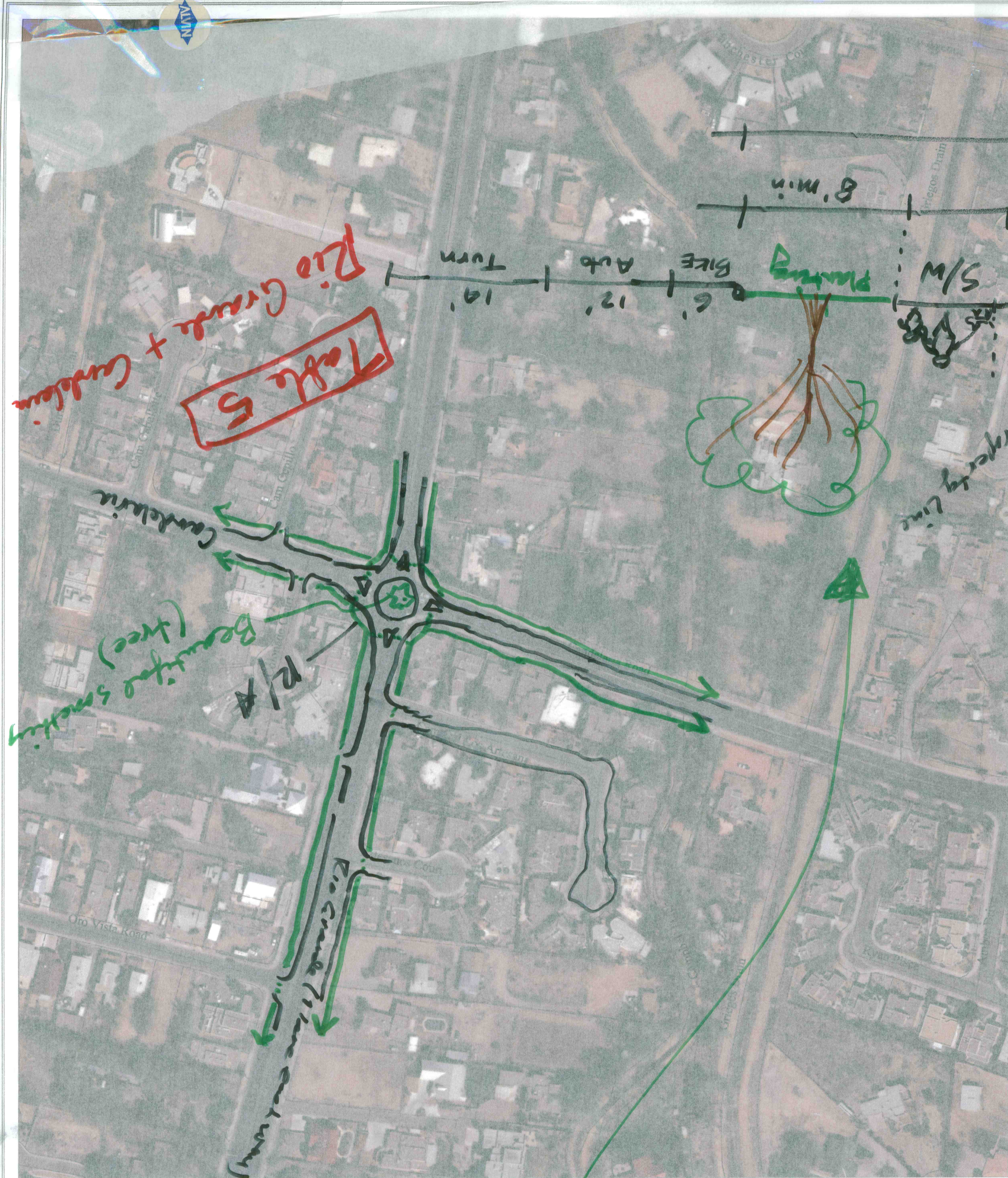
Los Candelarias: High School traffic is confused in this area. Needs to be reorganized. Ditches, create crossings. Create pedestrian refuge, additional crossings along blvd. Need protected left turn, more time for pedestrian crossings so that peds don't have to run across. Noise pollution. Security/crime has affected the neighborhood.

# Rio Grande Boulevard Corridor

DOVER, KOHL & PARTNERS  
town planning  
1571 Sunset Drive, Coral Gables, FL 33143  
305.666.0446 www.doverkohl.com

TABLE 3

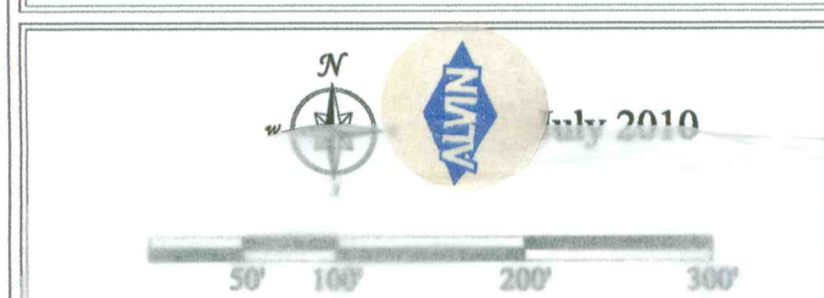




Los Candelarias Focus Area



Matthew Avenue Focus Area



# Rio Grande Boulevard Corridor Master Plan

DOVER, KOHL & PARTNERS  
town planning

See above



we have  
What we've lost

- Ditches
- Trees
- Open space
- Agriculture
- Quiet
- Walkability
- Safety from vehicles

Problems

- Sidewalks too narrow and impeded
- Can't safely cross Rio Grande
- Vehicle speeds high and too close to pedestrians
- Noise
- Bus only runs one direction

Proposals

- At least one lot that fronts on RG and <sup>City Tree Farm</sup> could get water from Conservancy in agriculture use.
- Landscape using agricultural materials (ag-scaping)
  - Grasses
  - Fruit trees
- Narrow Rio Grande to 2 lanes where traffic loads permit
- Trees along sidewalks
- Identify where we want to walk and make sure routes are walkable.
- Keep bike lanes and bus route in both directions
  - No bus pullouts

Proposals (continued)

- Local Improvement District to maintain sidewalks and underground powerlines
- Ivy?

Short term proposals

- Go back to old striping on Candelaria at RG
- Fix pedestrian crossings and sidewalks at Matthew
- Sign for traffic to slow down prior to blind curve south of Matthew.

TABLE  
6

Bike  
emphasis

Rio Grande

Paseo Del Bosque Trail

Destination  
NATURE CENTER

Candelaria Road

Campbell Road

Don Quixote Drive

Floral Road

Interstate 40 / Coronado Freeway

Mountain Road

Griegos Drain

Montano Road

Griegos Lateral

Dietz Place

Griegos Road

Indian School Road

Interstate 40 / Coronado Freeway

Aspen Avenue

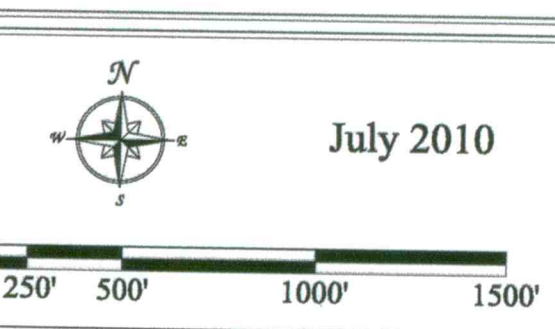
Mountain Road

Table # 6 (Tom, table presenter)

Series of destination points. Connect villages once again. Old town draws people off of I-40. Gateway off of I-40 to identify Rio Grande North and South. Small commercial in vicinity of Indian School. Then becomes more suburban toward north, then more rural. Allow each neighborhood to begin to identify itself along the corridor. Enhance commercial, expand village on large undeveloped parcel (Los Duranes), frontage road along I-40.\*Pedestrian and bike routes along corridor. Incorporate equestrian mobility. Village has front on Rio Grande, buildings up toward the front. Create edge along those approaching along the Ditch. Indian School/Rio Grande Intersection has traffic control issue. Paving could change to signify village character, less asphalt. Incorporate transit, even horse and carriage. Event center towards Old Town. Energize, interaction zone, for both residents and visitors. Shade trees are an absolute must. Utilities underground. Development similar to Sawmills land trust. Pedestrian access somehow, "skip the highway" from North to South.

\*Frontage Rd Complete from 12<sup>th</sup> to Rio Grande

Old ditch across behind  
the Saw Mill land Trust And  
Behind new village  
Tunnel for ped, bike, horse  
under the highway



July 2010

# Rio Grande Boulevard Corridor

#6

DOVER, KOHL & PARTNERS  
town planning  
1571 Sunset Drive, Coral Gables, FL 33143  
305.666.0446 www.doverkohl.com

© Copyright 2010 by Victor Dover and Joseph Kohl. Images, networks, diagrams and other items produced by Dover, Kohl & Partners are for purposes of conceptual illustration only and do not represent a guarantee of any kind. These items are instruments of service which remain the property of Dover, Kohl & Partners and may not be duplicated without permission. Dover, Kohl & Partners and its sub-consultants shall not have any liability for errors or omissions in the implementation of the project, or for errors or omissions by future consultants, developers, or government.

Griegos Road

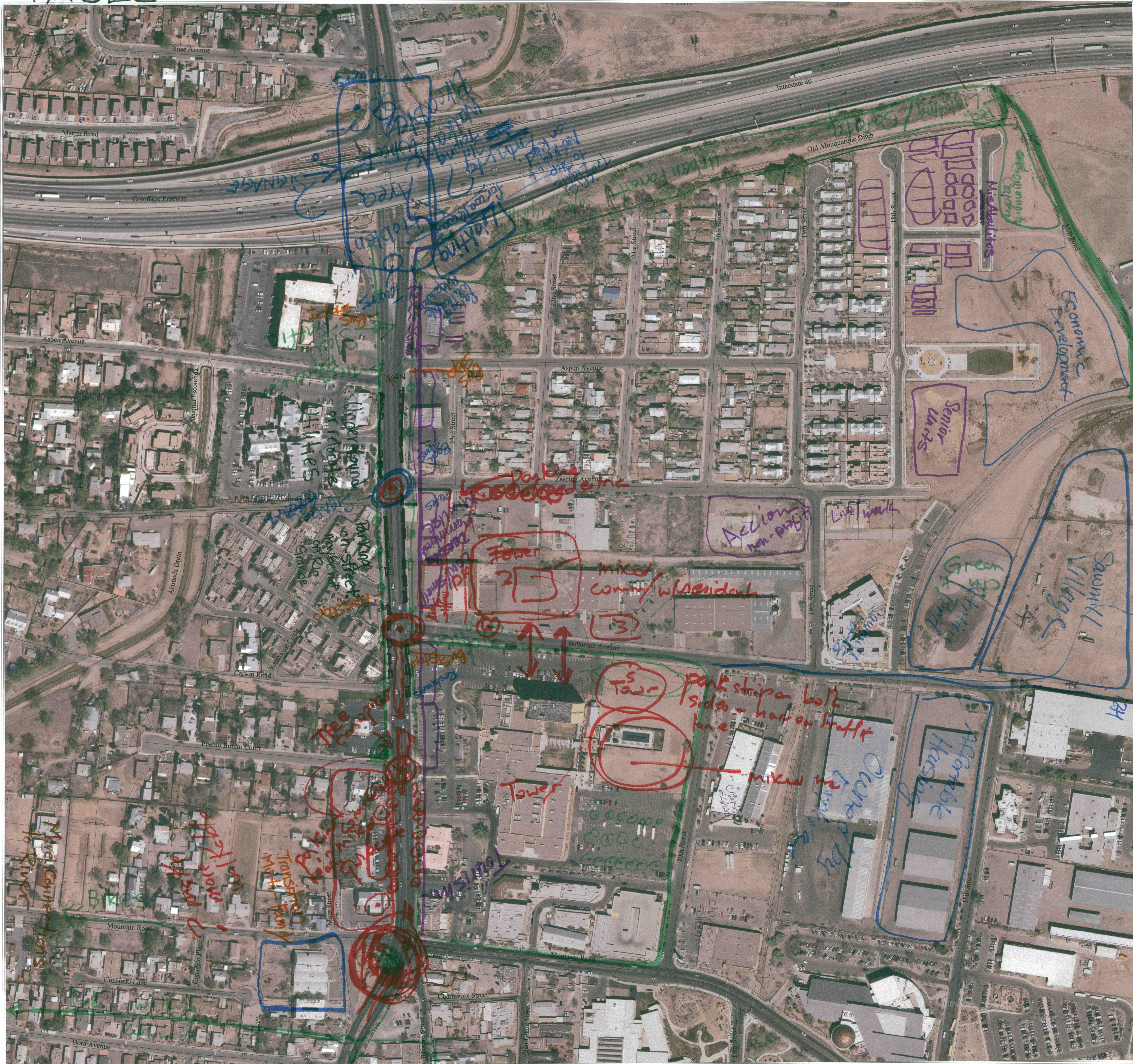
Interstate 40 / Coronado Freeway

Mountain Road



© Copyright 2010 by Victor Dover and Joseph Kohl. Images, artworks, diagrams and other items produced by Dover, Kohl & Partners are for purposes of conceptual illustration only and do not represent a guarantee of any kind. These items are instruments of service which

TABLE 2



Copyright 2010 by Victor Dover and Joseph Kohl. Images, artworks, diagrams and other items produced by Dover, Kohl & Partners are for purposes of conceptual illustration only and do not represent a guarantee of any kind. These items are instruments of service which remain the property of Dover, Kohl & Partners and may not be duplicated without permission. Dover, Kohl & Partners and its sub-consultants shall not have any control over and shall not be responsible for construction means, procedures, safety precautions, or legal disclosures in the implementation of the project, or for errors or omissions by future consultants, developers, or government.



# CONSTITUTIONAL PRINCIPLES

Rio Grande

### Paseo Del Bosque Trail

### Candelaria Road

Campbell Road

### Don Quixote Drive

## Floral Road

Interstate 40 / Coronado Freeway

## Mountain Road

### Griegos Drain

Montano Road

## Griegos Latera

## Dietz Place

Griegos Road

Candelaria Road

Matthew Avenue

Indian School Road

Interstate 40 / Coronado Freeway

## Aspen Avenue

Mountain Road

business clusters  
w/ pleasant,  
walkable connections  
betw. - lighting

[illegible]

Transfer of Development Rights to keep rural character. Green Belt other incentives.

The short tailed  
light enc. people  
+ turn.  
to speed up many  
A frame slower  
enc.  
turning.

good example: oCl

- ~~fronting~~ Crush five sided.
- trees - betw sided
- wide sided.
- bike lane in street

Table 7

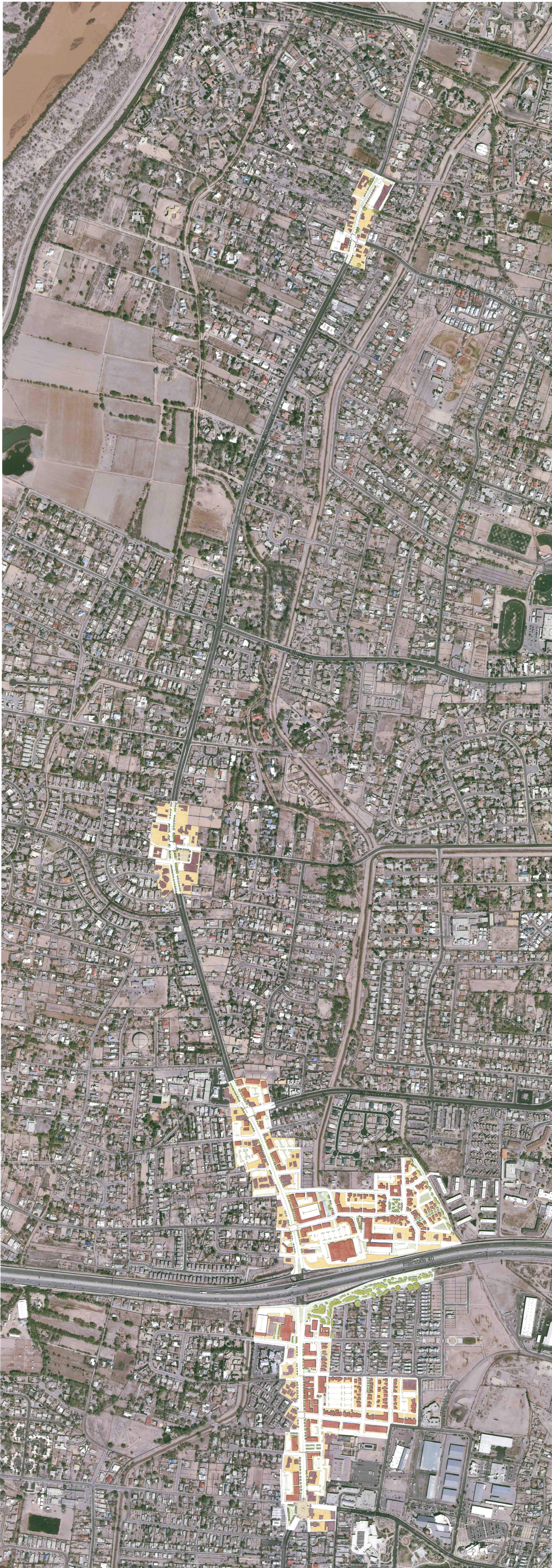
off  
 More of a buffer +  
 betw. traffic +  
 bike path.

\* Begin 2 lanes (total)  
from Indian School north →  
(commuter traffic seems to  
turn more easter Indian School) 11:15:00

## Table 7

# Rio Grande Boulevard Corridor

DOVER, KOHL & PARTNERS  
town planning  
1571 Sunset Drive, Coral Gables, FL 33143  
305.666.0446 [www.doverkohl.com](http://www.doverkohl.com)



July 2010

125' 250' 500' 750'

# Rio Grande Boulevard Corridor Master Plan

## Illustrative Plan

DOVER, KOHL & PARTNERS  
town planning

1571 Sunset Drive, Coral Gables, FL 33143  
305.666.0464 www.doverkohl.com

© Copyright 2010 by Victor Dover and Joseph Kohl. Images, artwork, diagrams and other items produced by Dover, Kohl & Partners are for purposes of conceptual illustration only and do not represent a guarantee of any kind. These items are instruments of service which remain the property of Dover, Kohl & Partners and may not be duplicated without permission. Dover, Kohl & Partners and its sub-consultants shall not have any control over and shall not be responsible for construction means, procedures, safety precautions, or legal disclosures in the implementation of the project, or the errors or omissions by future consultants, developers, or government.

# Rio Grande Boulevard Corridor

DOVER, KOHL & PARTNERS  
 1571 Sunset Drive, Coral Gables, FL 33143  
 305.666.0446 www.doverkohl.com  
 town planning



Softening zone of Hotel AGO  
 parking lot  
 Need to link bike path to east + west  
 Need to add off-bike paths  
 east + west

Mixed-use corridor character needed  
 front-load buildings + rear-load parking  
 Need consistency of sidewalks

often the need to ditch the front-loaded parking lots  
 drag strip !!  
 way too fast  
 Don Quijote Drive  
 Campbell Road

Shade Canopy @ P.O.W.  
 pedestrian crossing from ditch bank  
 great ditch bank - walking > interconnected trail system  
 MIXED-USE

need variety of green strips + medians

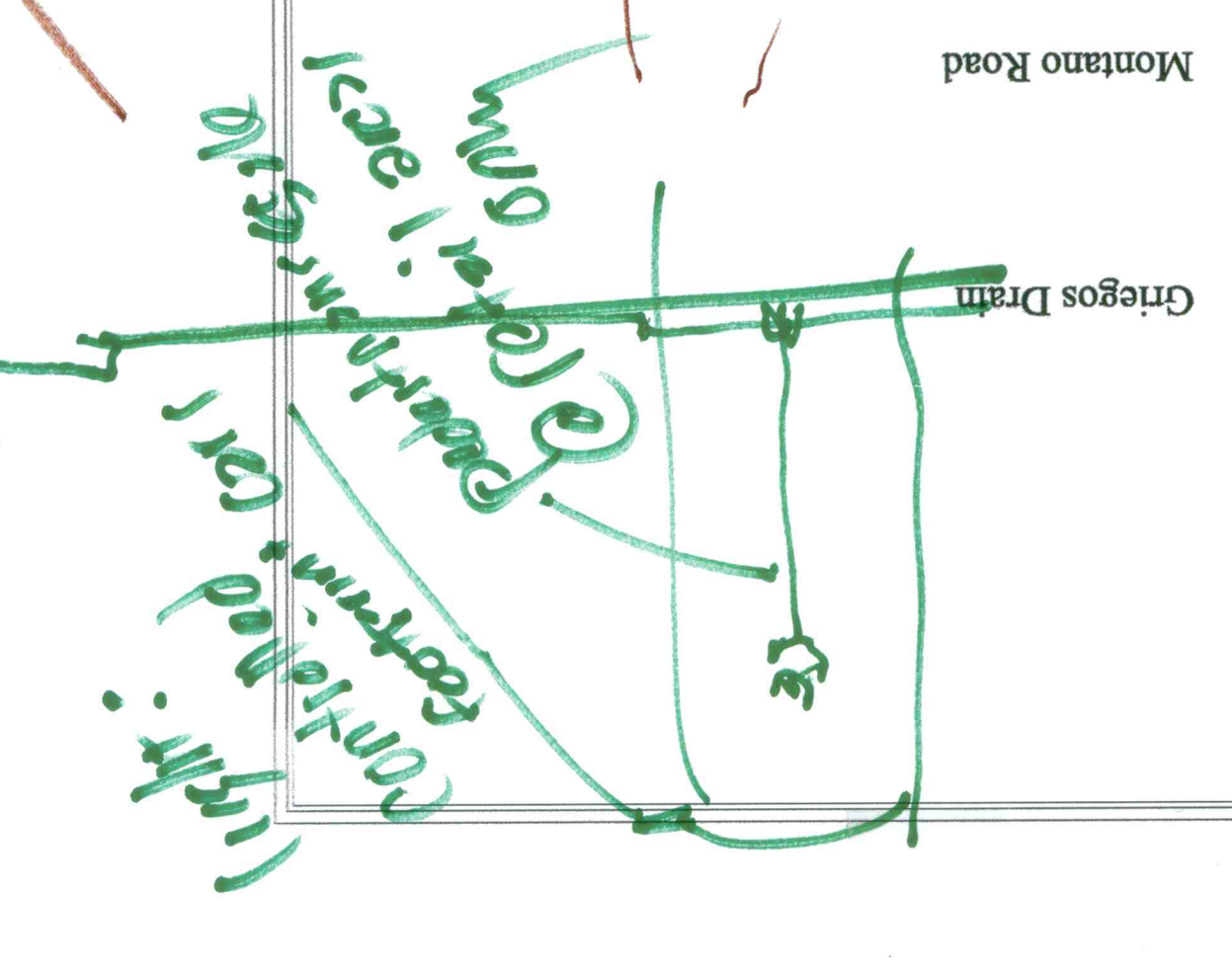
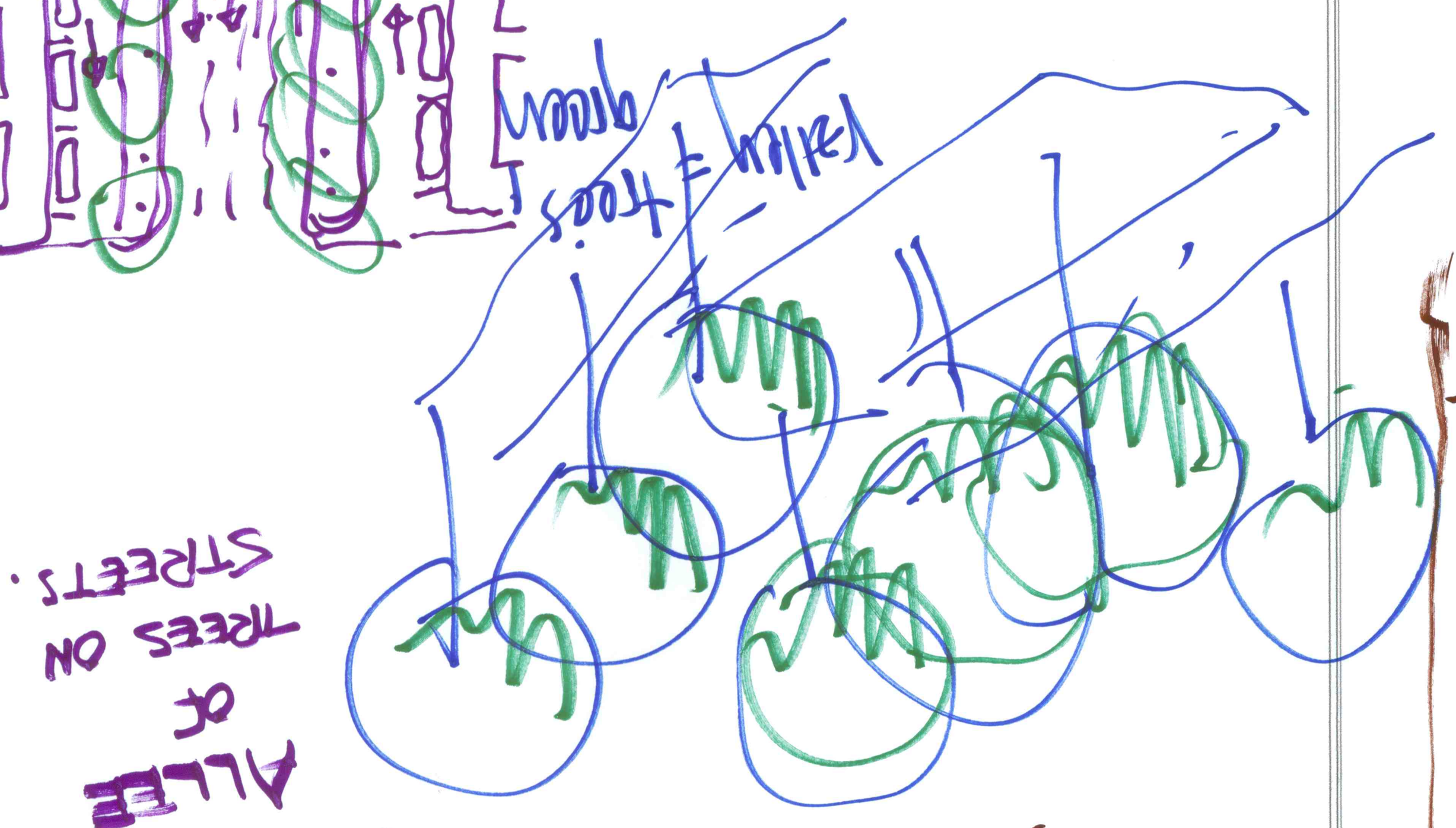
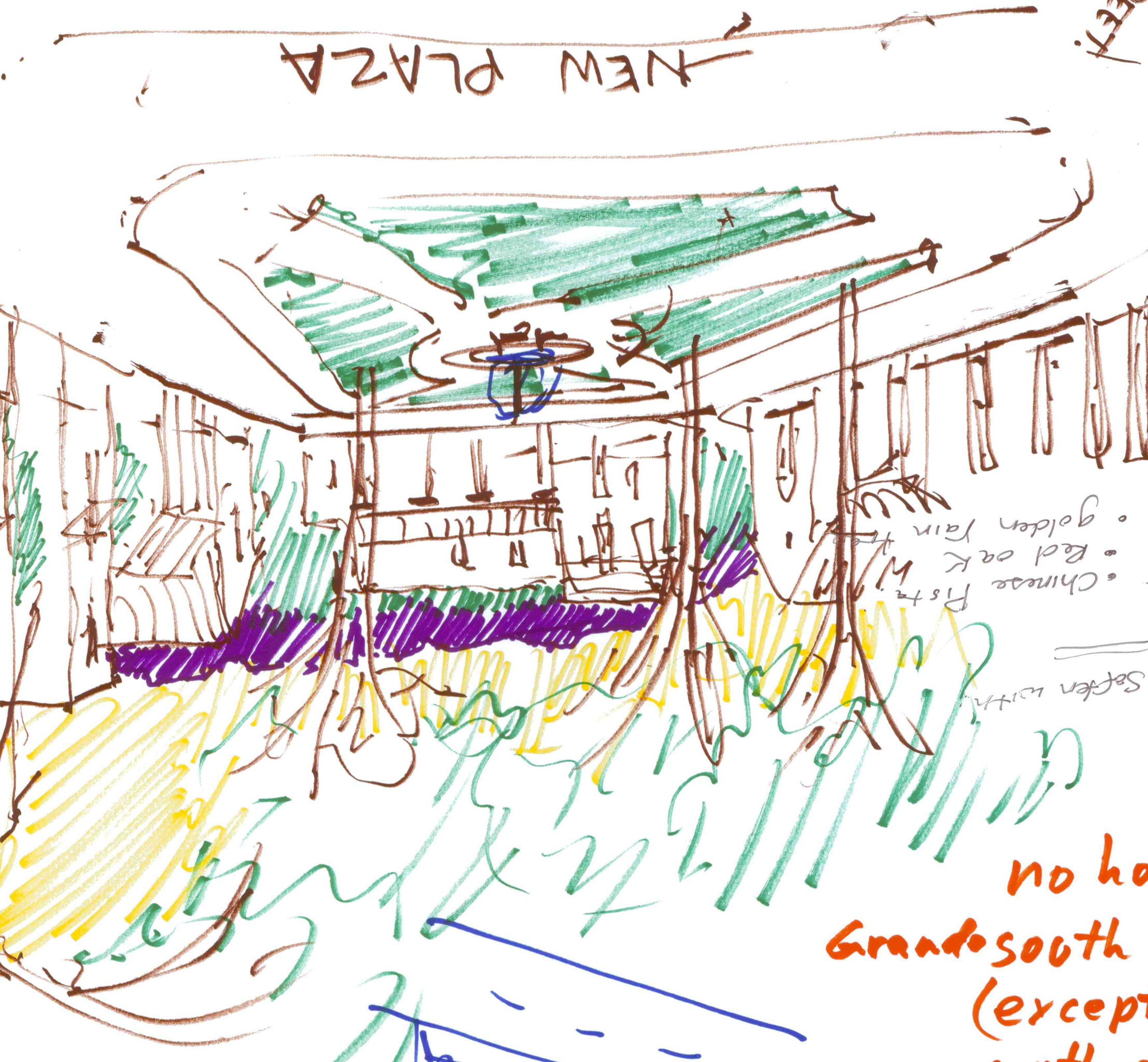
MERCHANDISE PUBLIC

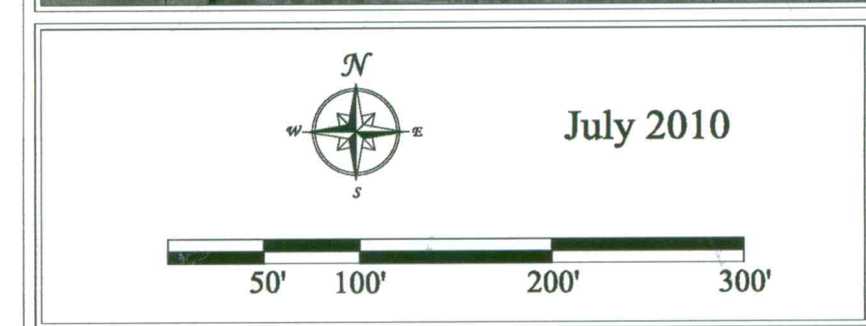
Spread 1/2 mile wide  
 character bldgs / non-character bldgs  
 2 or 3 stories  
 covered walkways sheltered from street

AGG

no houses left on Rio Grande south of Zickert (except townhouses south of I-40)

RIO GRANDE BLVD.  
 FEWER CURB CUTS!  
 WIDEN SIDE WALKS!  
 PLANTING STRIPS / PARKED CARS AS BARRIER TO PROTECT PEDESTRIANS.





# Rio Grande Boulevard Corridor Master Plan

## Los Duranes Focus Area

© Copyright 2010 by Victor Dover and Joseph Kohl. Images, artworks, diagrams and other items produced by Dover, Kohl & Partners are for purposes of conceptual illustration only and do not represent a guarantee of any kind. These drawings are not intended to be used for construction purposes without the written permission of Dover, Kohl & Partners. Dover, Kohl & Partners and its sub-consultants shall not have any control over and shall not be responsible for construction means, procedures, safety precautions, or legal disclosures in the implementation of the project, or for errors or omissions by future consultants, developers, or government.

DOVER, KOHL & PARTNERS  
town planning  
1571 Sunset Drive, Coral Gables, FL 33143  
305.666.0446 www.doverkohl.com

from  
1001