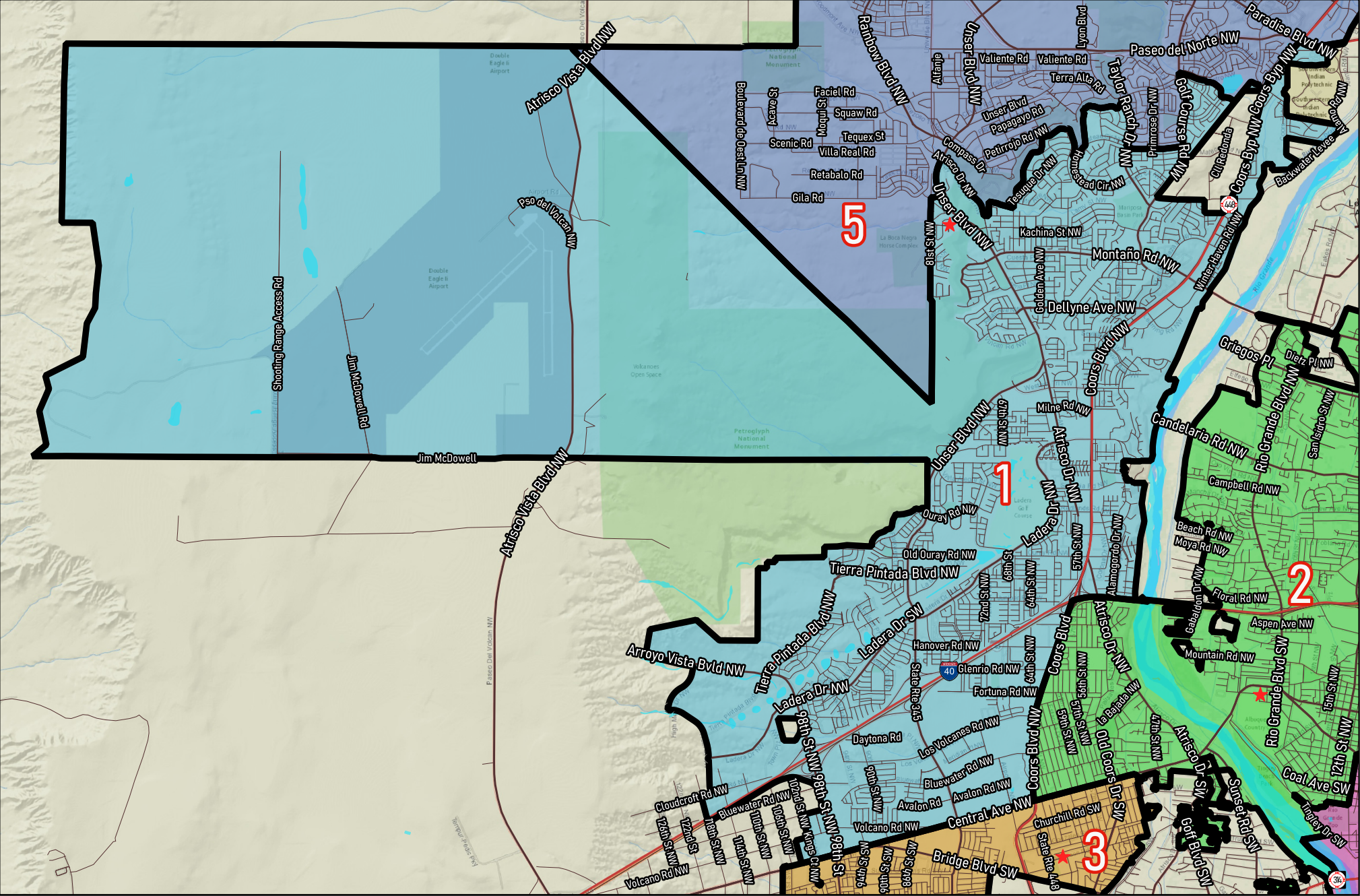


Research & Polling, Inc. distributes this map assuming no liability for any errors, omissions, or inaccuracies in the information provided regardless of the cause in reliance upon any maps.

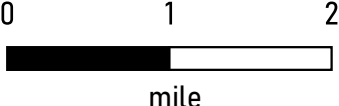
★ City Councilors

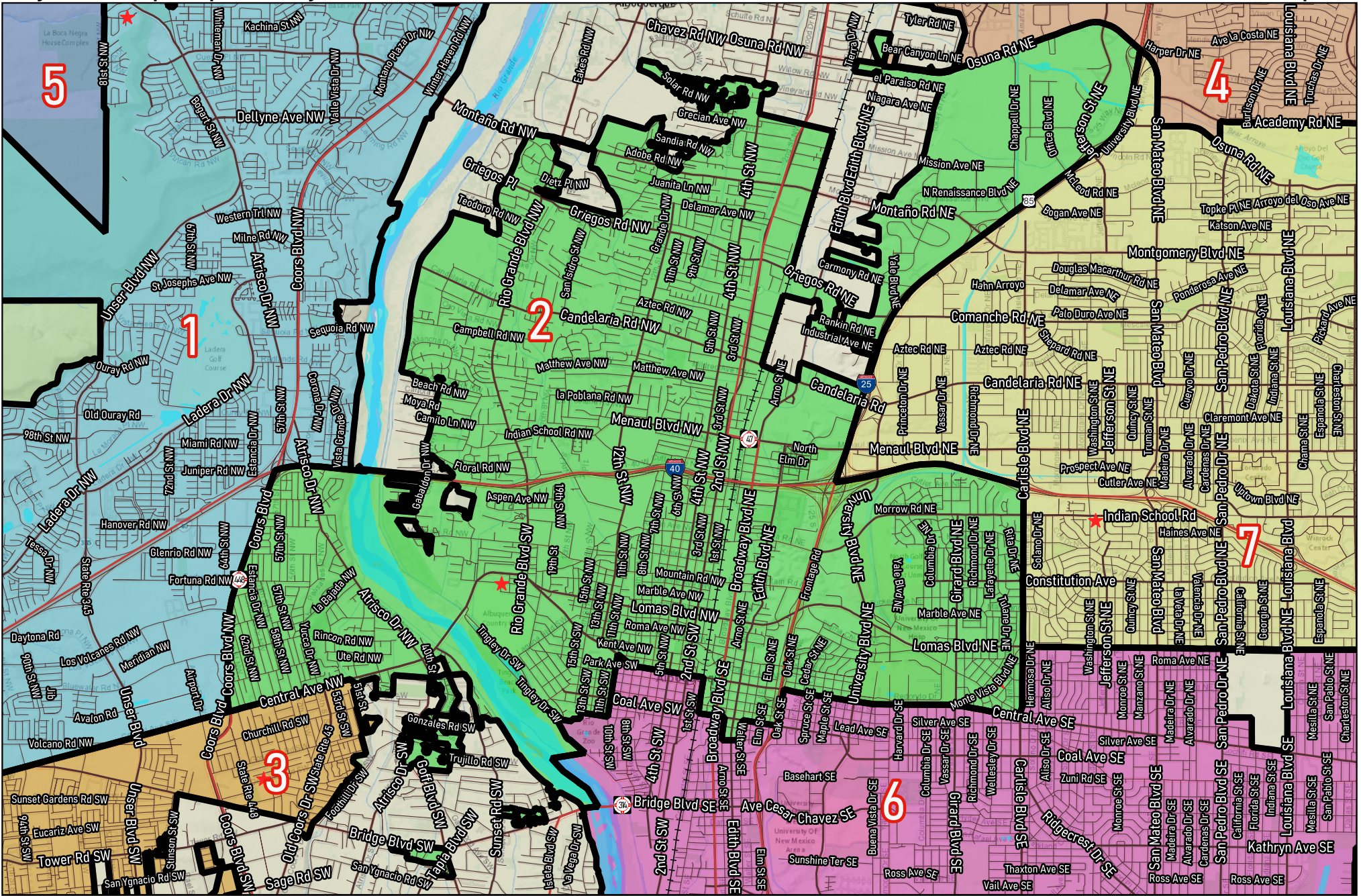




Research & Polling, Inc. distributes this map assuming no liability for any errors, omissions, or inaccuracies in the information provided regardless of the cause in reliance upon any maps.

★ City Councilors





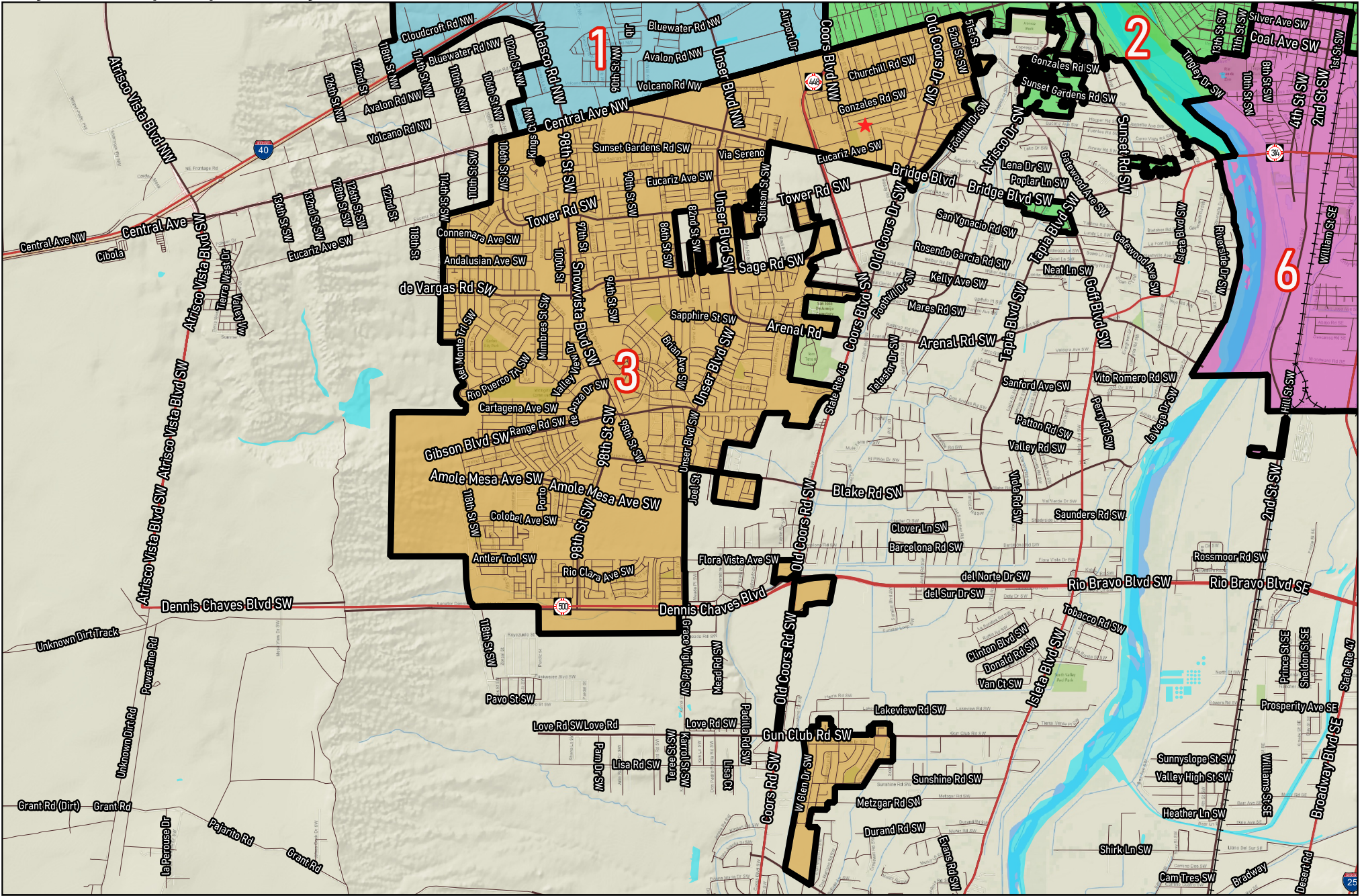
Research & Polling, Inc. distributes this map assuming no liability for any errors, omissions, or inaccuracies in the information provided regardless of the cause in reliance upon any maps.

★ City Councilors



0 1

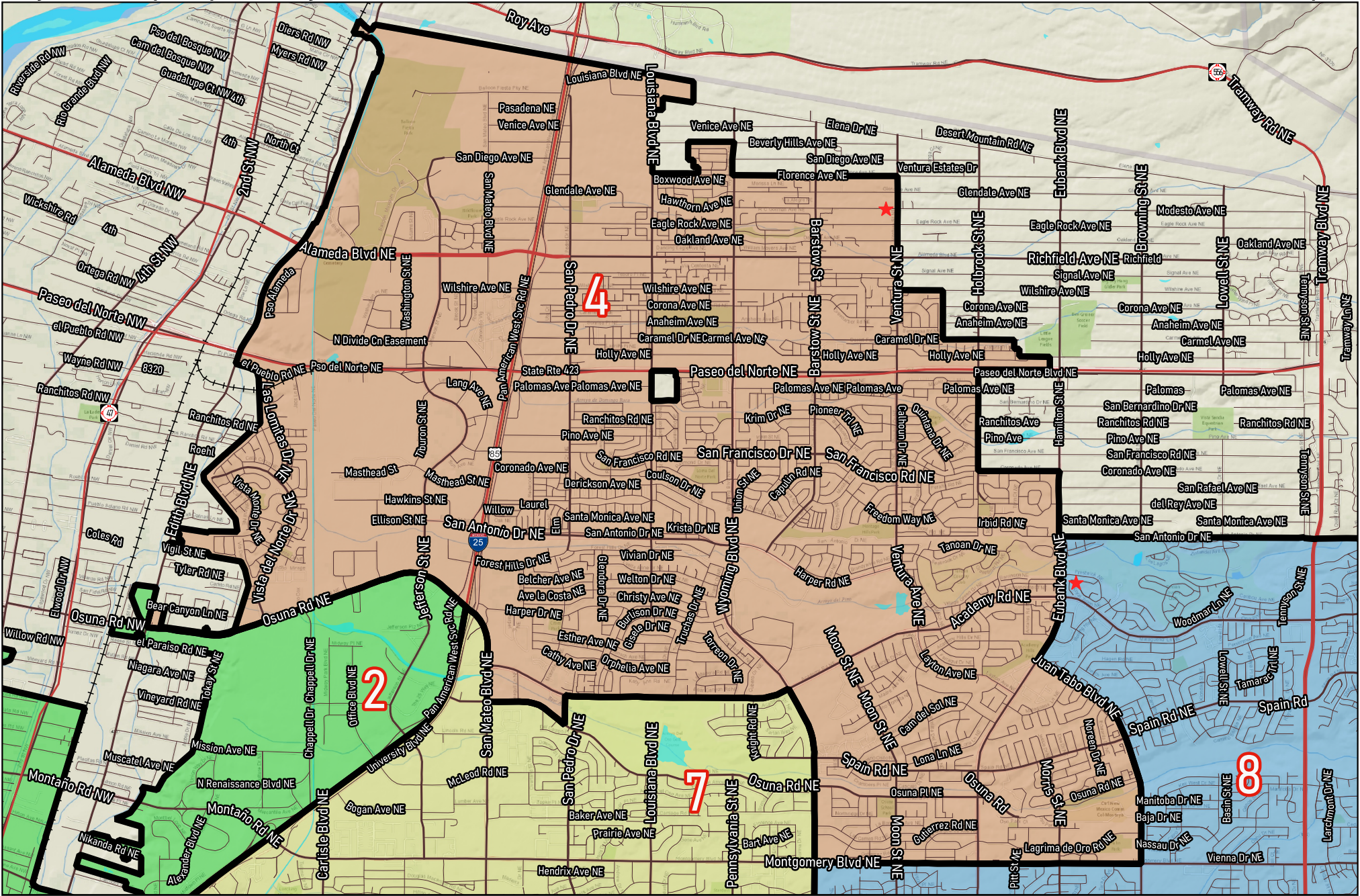
mile



Research & Polling, Inc. distributes this map assuming no liability for any errors, omissions, or inaccuracies in the information provided regardless of the cause in reliance upon any maps.

★ City Councilors



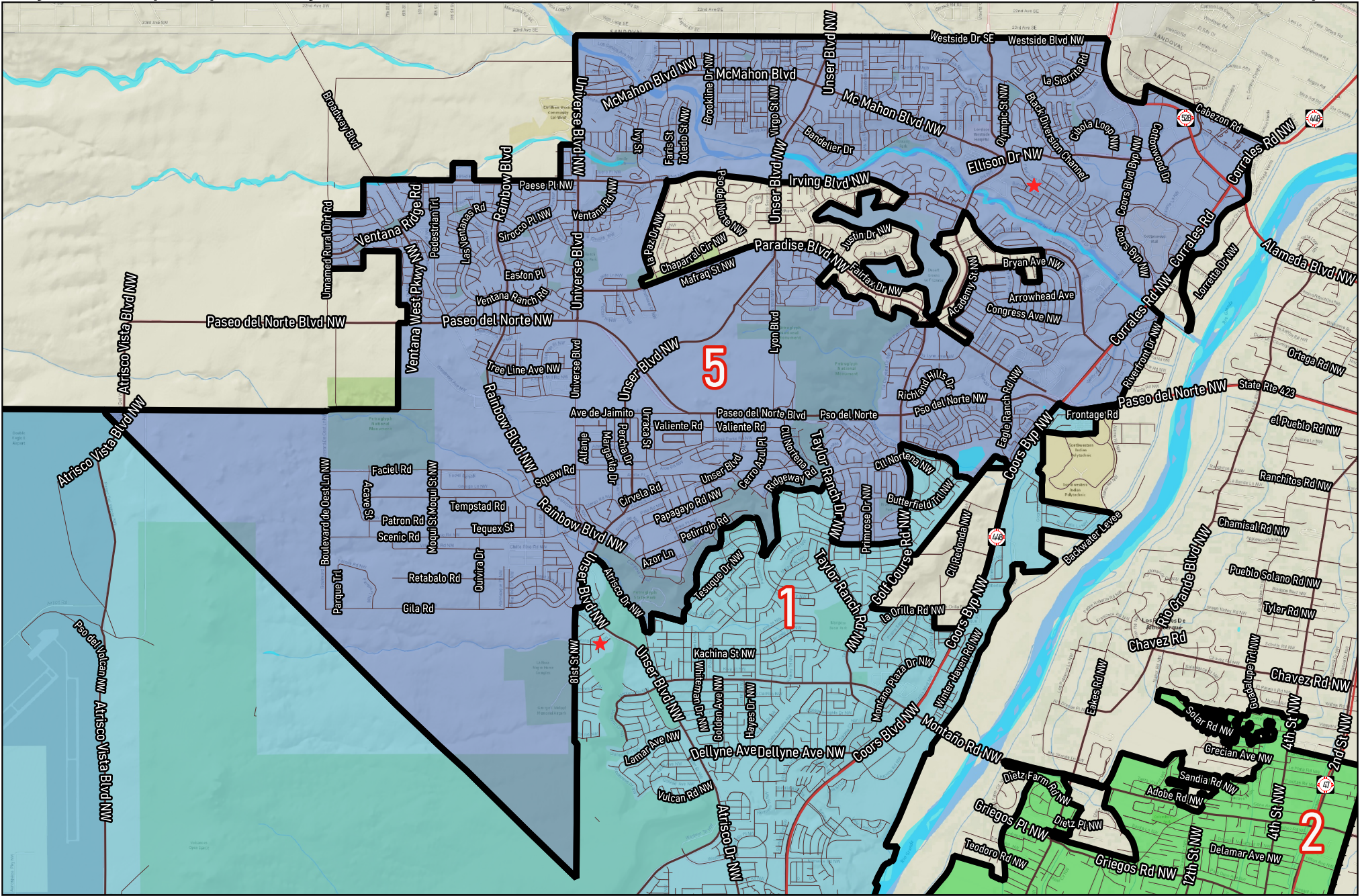


Research & Polling, Inc. distributes this map assuming no liability for any errors, omissions, or inaccuracies in the information provided regardless of the cause in reliance upon any maps.

★ City Councilors



mile

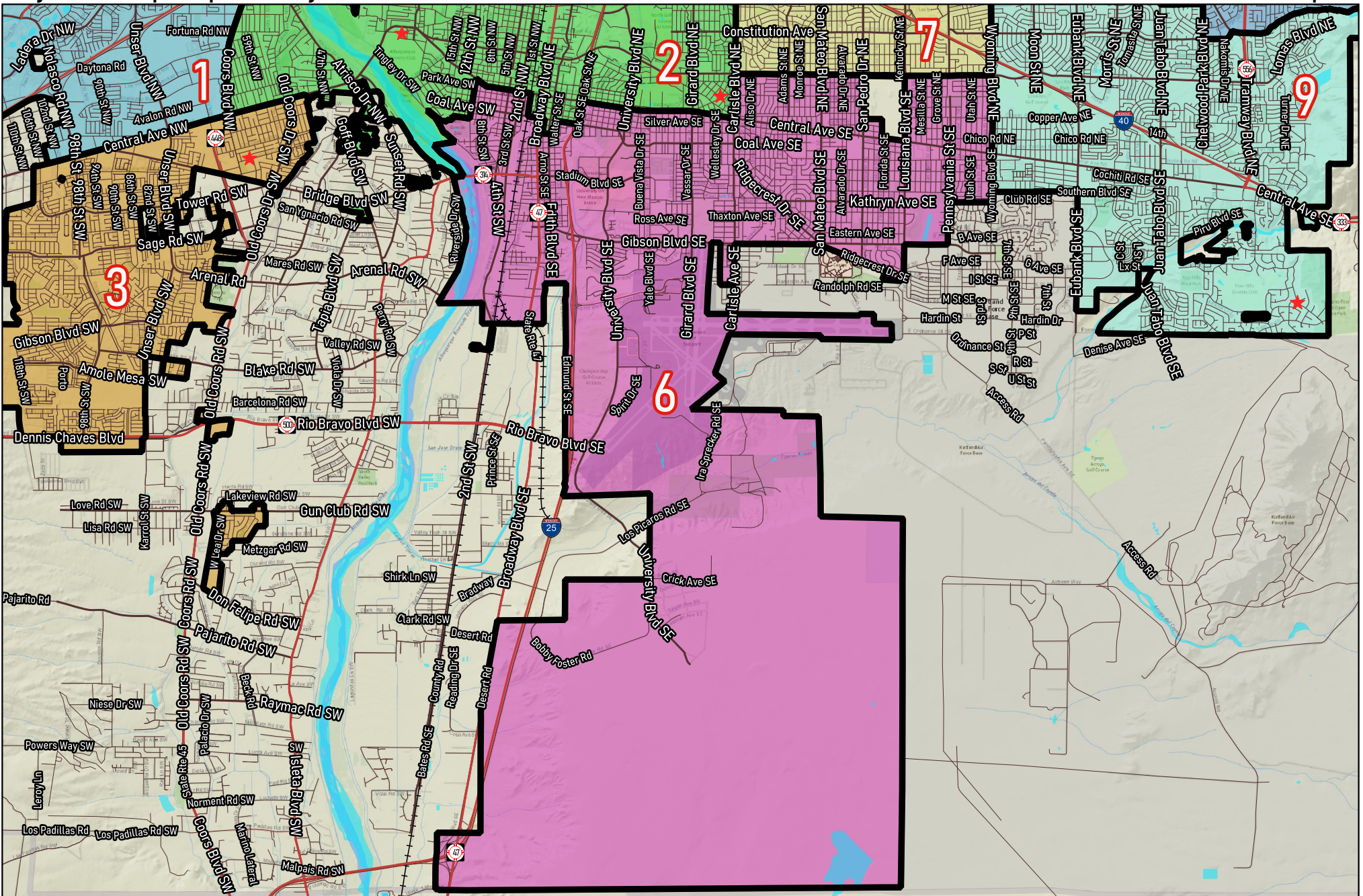


Research & Polling, Inc. distributes this map assuming no liability for any errors, omissions, or inaccuracies in the information provided regardless of the cause in reliance upon any maps.

★ City Councilors

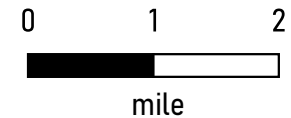


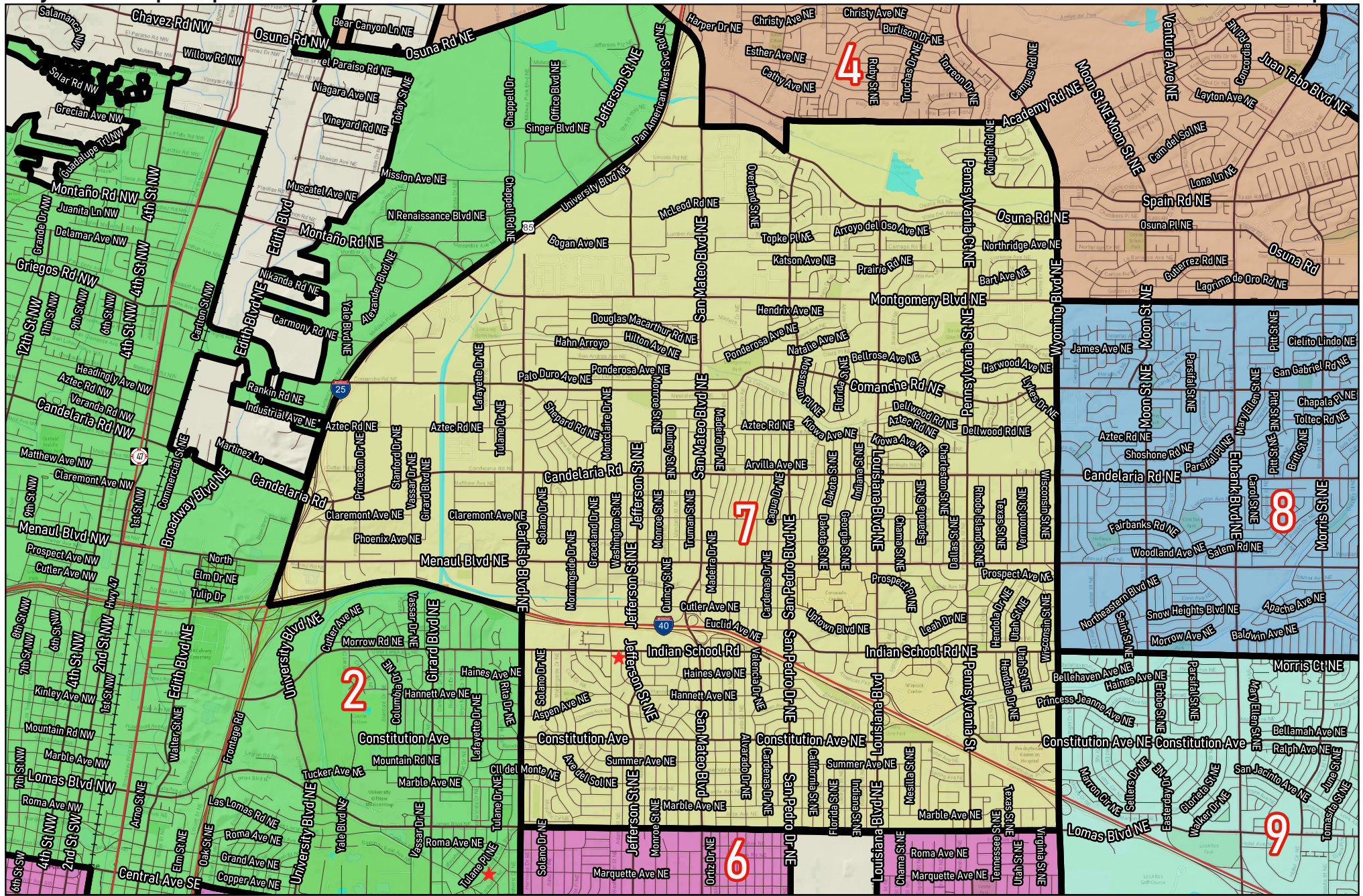
mile



Research & Polling, Inc. distributes this map assuming no liability for any errors, omissions, or inaccuracies in the information provided regardless of the cause in reliance upon any maps.

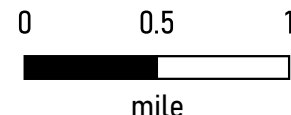
★ City Councilors

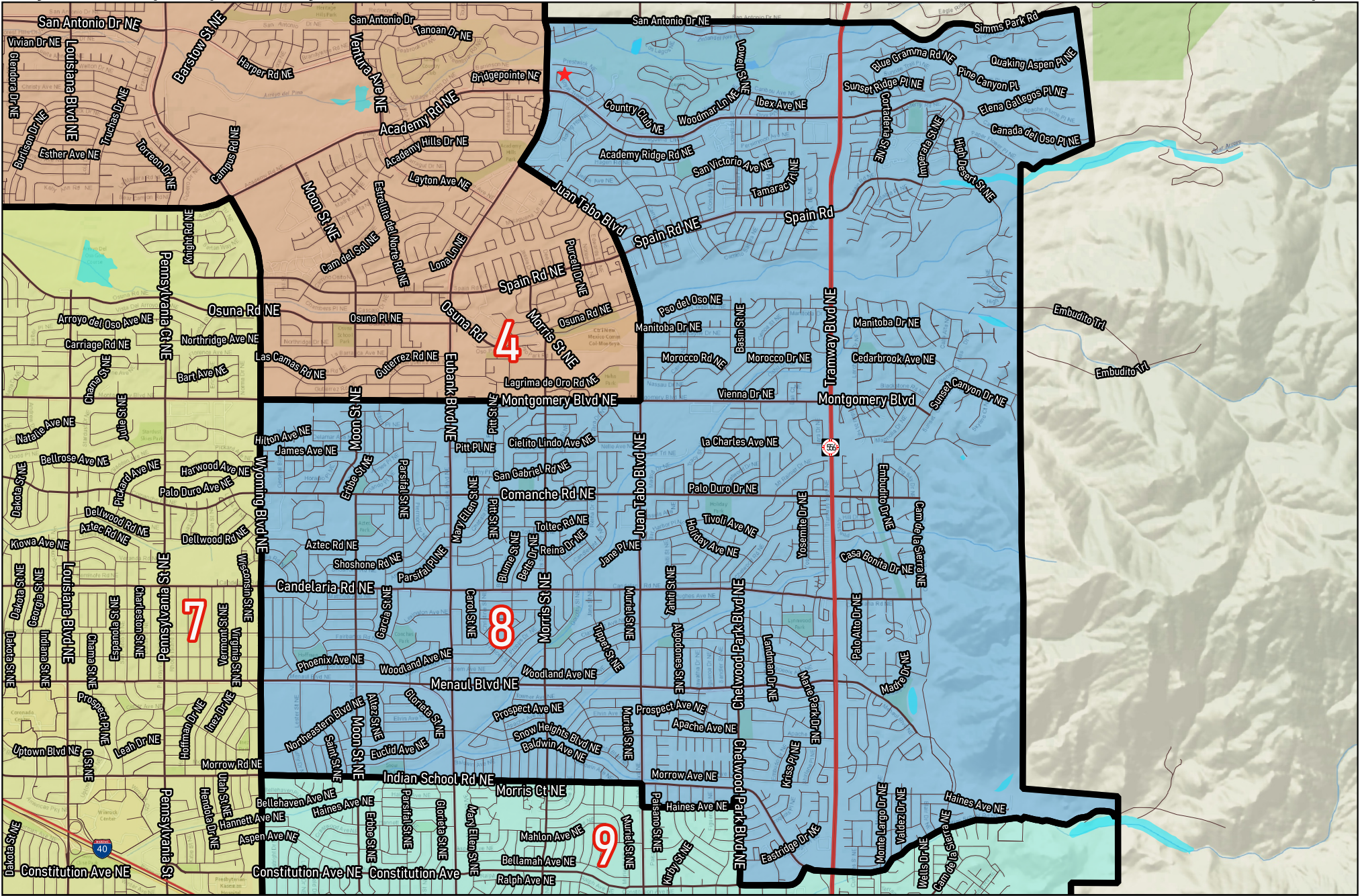




Research & Polling, Inc. distributes this map assuming no liability for any errors, omissions, or inaccuracies in the information provided regardless of the cause in reliance upon any maps.

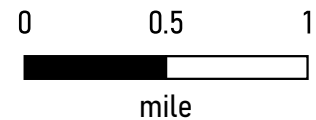
★ City Councilors

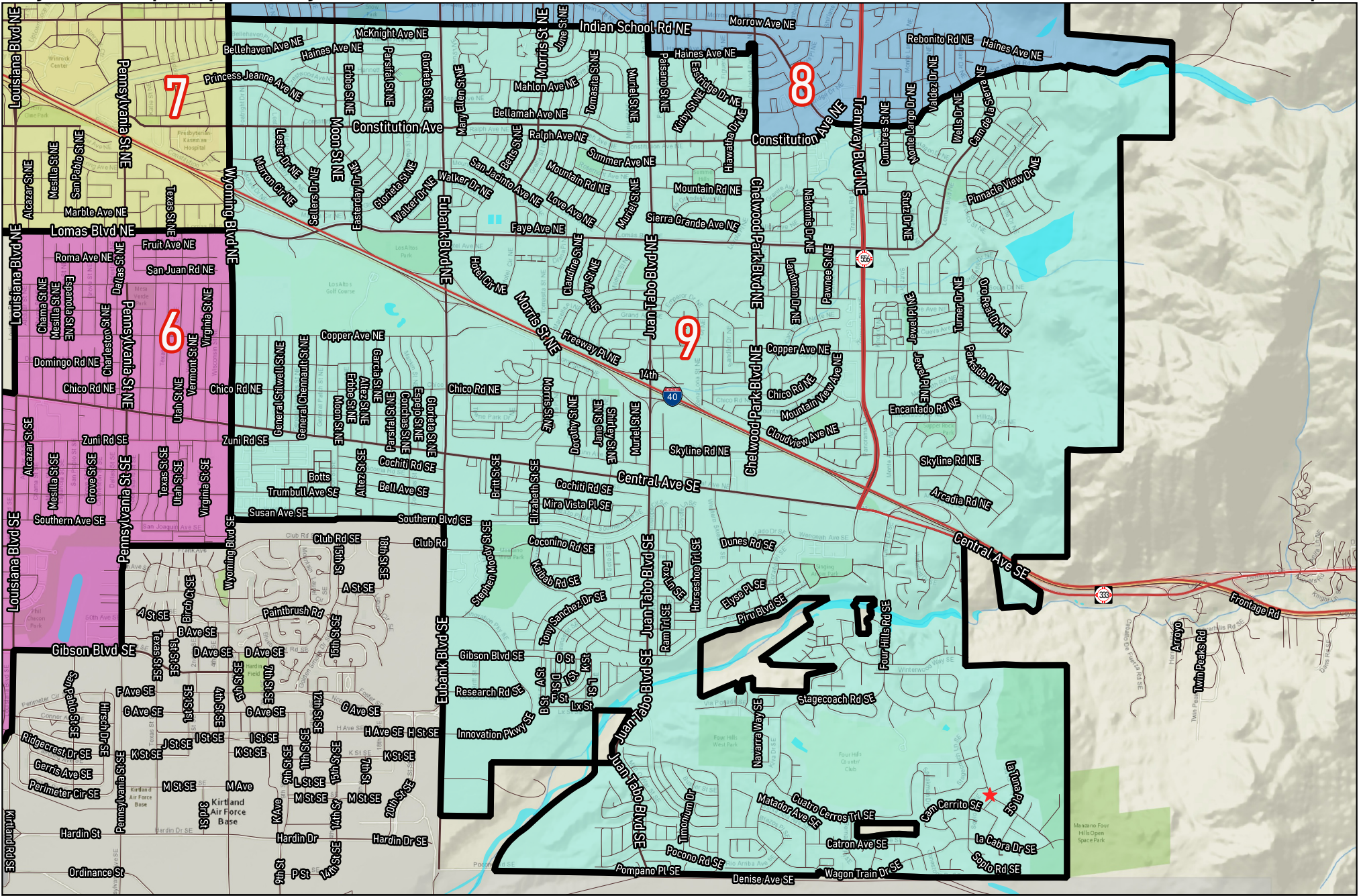




Research & Polling, Inc. distributes this map assuming no liability for any errors, omissions, or inaccuracies in the information provided regardless of the cause in reliance upon any maps.

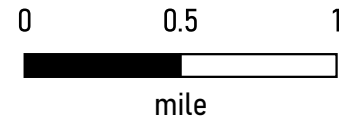
★ City Councilors





Research & Polling, Inc. distributes this map assuming no liability for any errors, omissions, or inaccuracies in the information provided regardless of the cause in reliance upon any maps.

★ City Councilors



**City of Albuquerque
Concept E**

**2020 Census
Redistricting**

District	Pop	Deviation	Hispanic	Non-Hispanic										
				White		Native American		Black		Asian		Other Races		
1	64,407	1,680 2.7%	36,698 57.0%	19,262 29.9%	2,952 4.6%	1,938 3.0%	1,417 2.2%	2,140 3.3%						
18+	49,989		26,759 53.5%	16,809 33.6%	2,206 4.4%	1,542 3.1%	1,183 2.4%	1,490 3.0%						
2	61,768	-959 -1.5%	33,282 53.9%	21,618 35.0%	2,407 3.9%	1,202 1.9%	1,025 1.7%	2,234 3.6%						
	51,494		26,210 50.9%	19,608 38.1%	2,044 4.0%	984 1.9%	920 1.8%	1,728 3.4%						
3	63,424	697 1.1%	51,772 81.6%	6,509 10.3%	1,815 2.9%	1,534 2.4%	610 1.0%	1,184 1.9%						
	44,421		35,335 79.5%	5,248 11.8%	1,355 3.1%	1,161 2.6%	521 1.2%	801 1.8%						
4	63,534	807 1.3%	19,532 30.7%	33,616 52.9%	2,026 3.2%	1,317 2.1%	4,196 6.6%	2,847 4.5%						
	51,595		14,620 28.3%	29,088 56.4%	1,580 3.1%	1,083 2.1%	3,244 6.3%	1,980 3.8%						
5	64,060	1,333 2.1%	29,404 45.9%	24,903 38.9%	2,817 4.4%	2,089 3.3%	1,982 3.1%	2,865 4.5%						
	47,871		20,350 42.5%	20,347 42.5%	2,046 4.3%	1,668 3.5%	1,584 3.3%	1,876 3.9%						
6	64,868	2,141 3.4%	32,008 49.3%	21,227 32.7%	4,055 6.3%	3,034 4.7%	1,765 2.7%	2,779 4.3%						
18+	52,798		24,212 45.9%	19,191 36.3%	3,256 6.2%	2,449 4.6%	1,565 3.0%	2,125 4.0%						
7	59,861	-2,866 -4.6%	23,727 39.6%	25,477 42.6%	4,116 6.9%	2,010 3.4%	1,838 3.1%	2,693 4.5%						
18+	48,856		17,948 36.7%	22,743 46.6%	3,057 6.3%	1,572 3.2%	1,555 3.2%	1,981 4.1%						
8	60,667	-2,060 -3.3%	17,400 28.7%	34,382 56.7%	2,073 3.4%	1,490 2.5%	2,362 3.9%	2,960 4.9%						
18+	49,519		12,937 26.1%	29,808 60.2%	1,543 3.1%	1,197 2.4%	1,914 3.9%	2,120 4.3%						
9	61,961	-766 -1.2%	25,408 41.0%	25,971 41.9%	2,934 4.7%	2,035 3.3%	2,846 4.6%	2,767 4.5%						
18+	49,017		18,263 37.3%	22,721 46.4%	2,122 4.3%	1,598 3.3%	2,375 4.8%	1,938 4.0%						
Totals	564,550	Ideal: 62,727	269,231 47.7%	212,965 37.7%	25,195 4.5%	16,649 2.9%	18,041 3.2%	22,469 4.0%						
18+	445,560		196,634 44.1%	185,563 41.6%	19,209 4.3%	13,254 3.0%	14,861 3.3%	16,039 3.6%						