

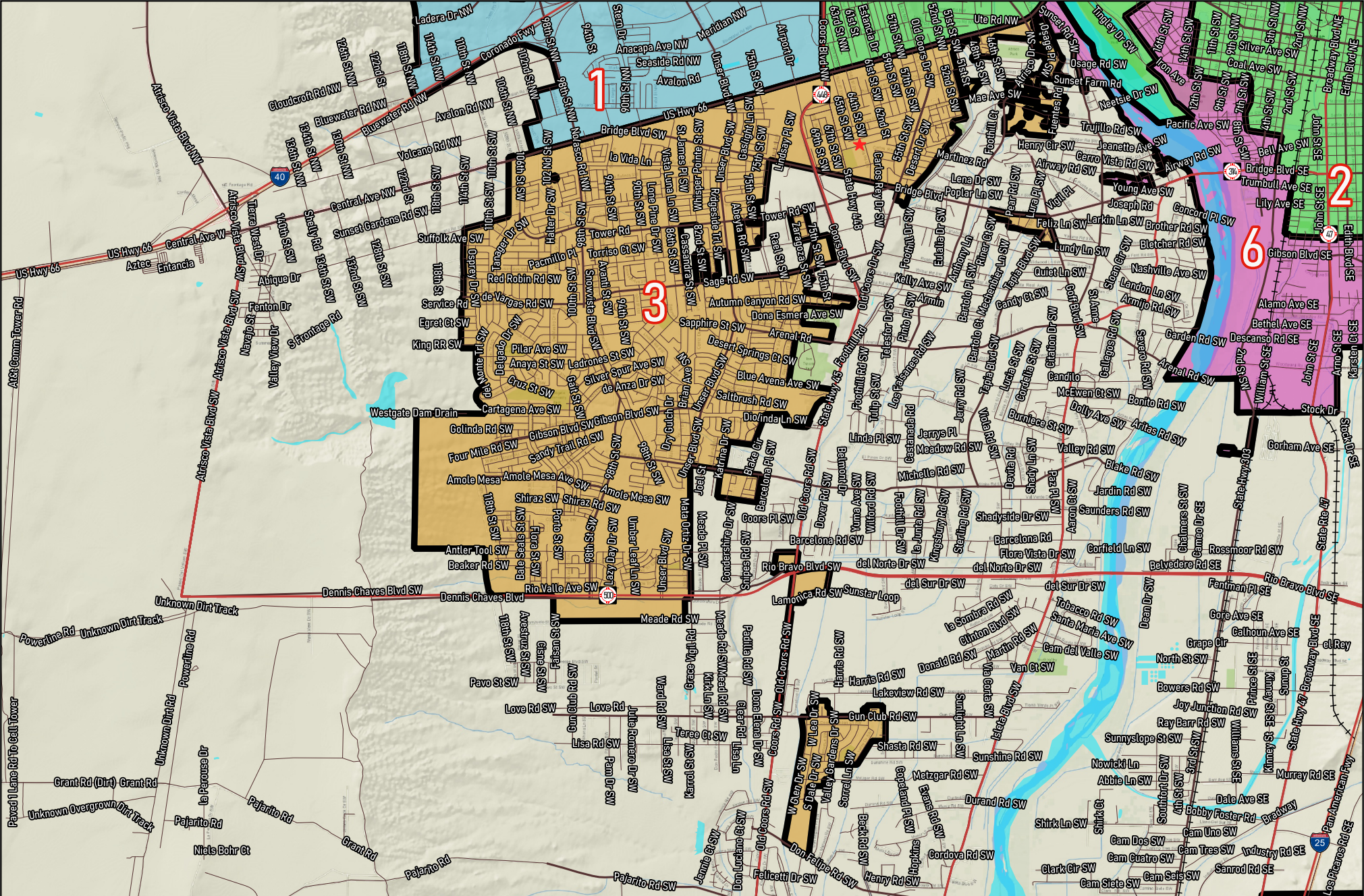
Research & Polling, Inc. distributes this map assuming no liability for any errors, omissions, or inaccuracies in the information provided regardless of the cause in reliance upon any maps.

★ City Councilors



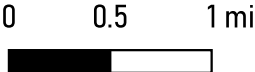
0 0.5 1 mi

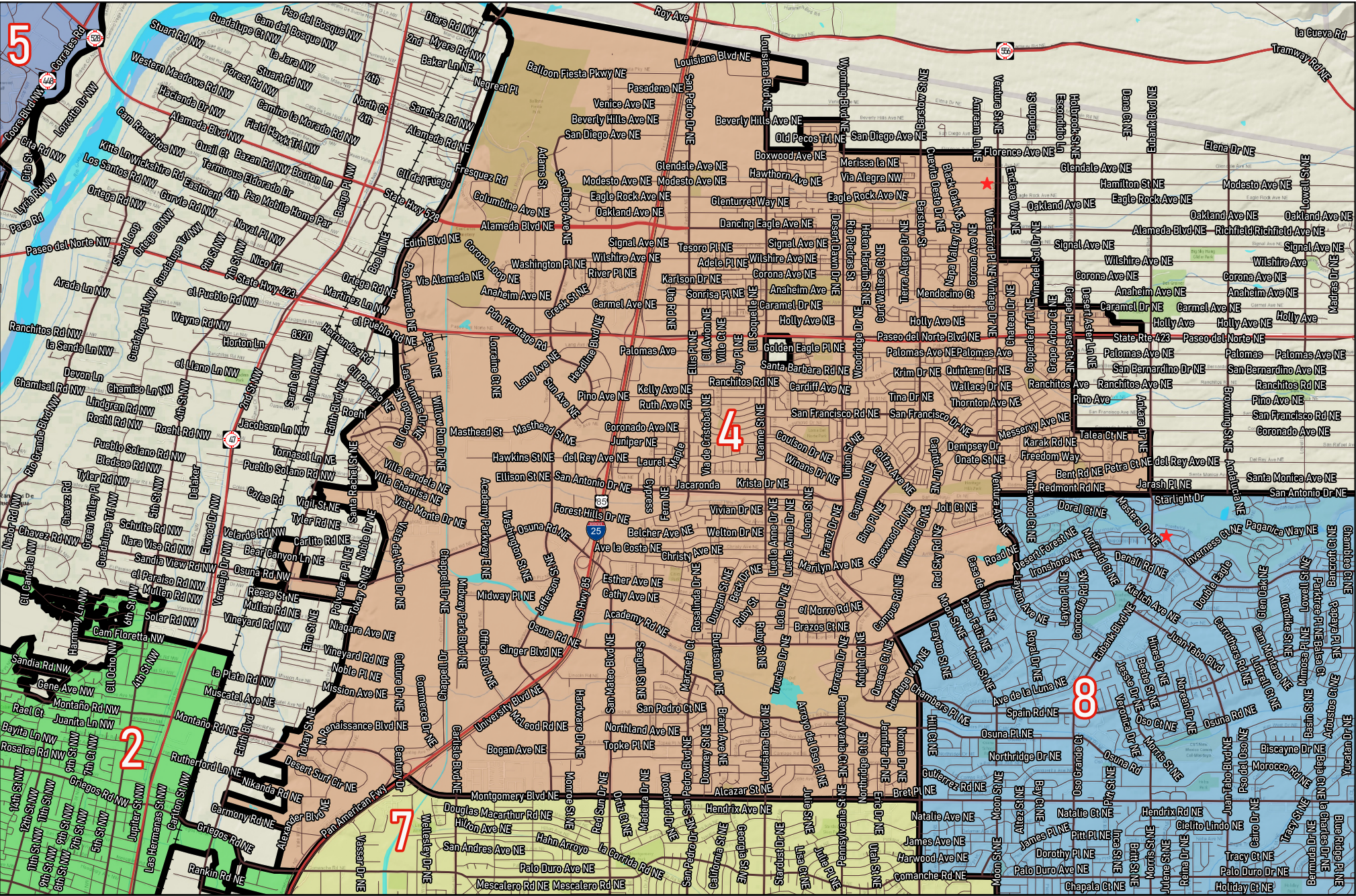


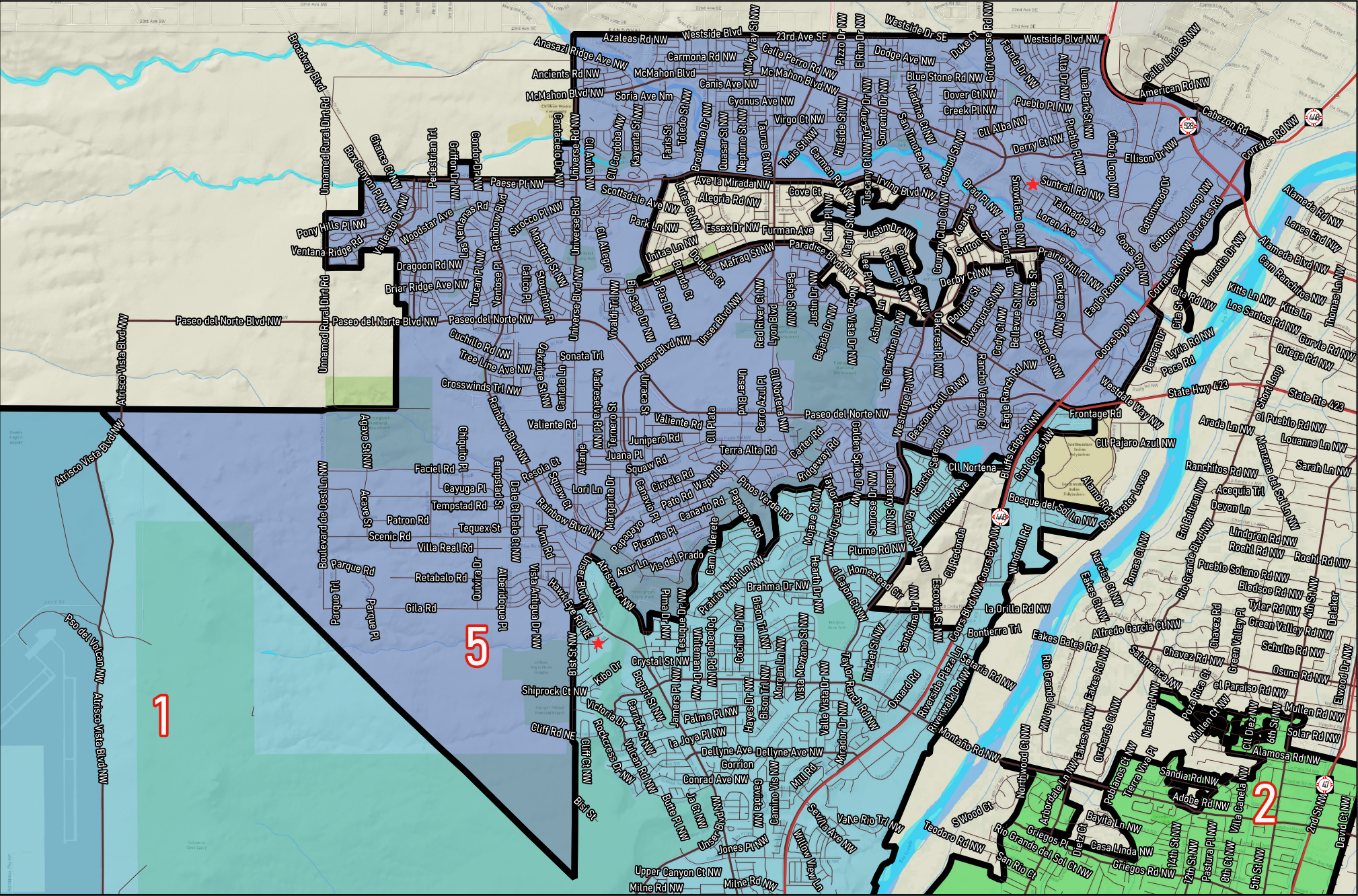


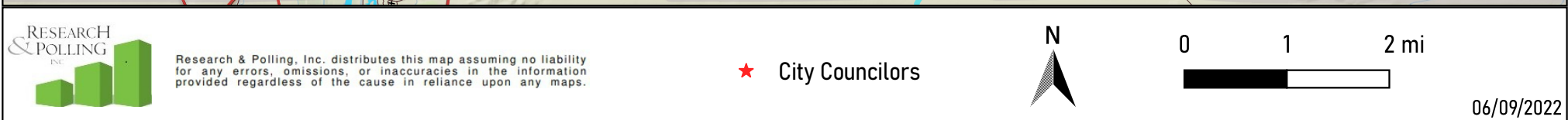
Research & Polling, Inc. distributes this map assuming no liability for any errors, omissions, or inaccuracies in the information provided regardless of the cause in reliance upon any maps.

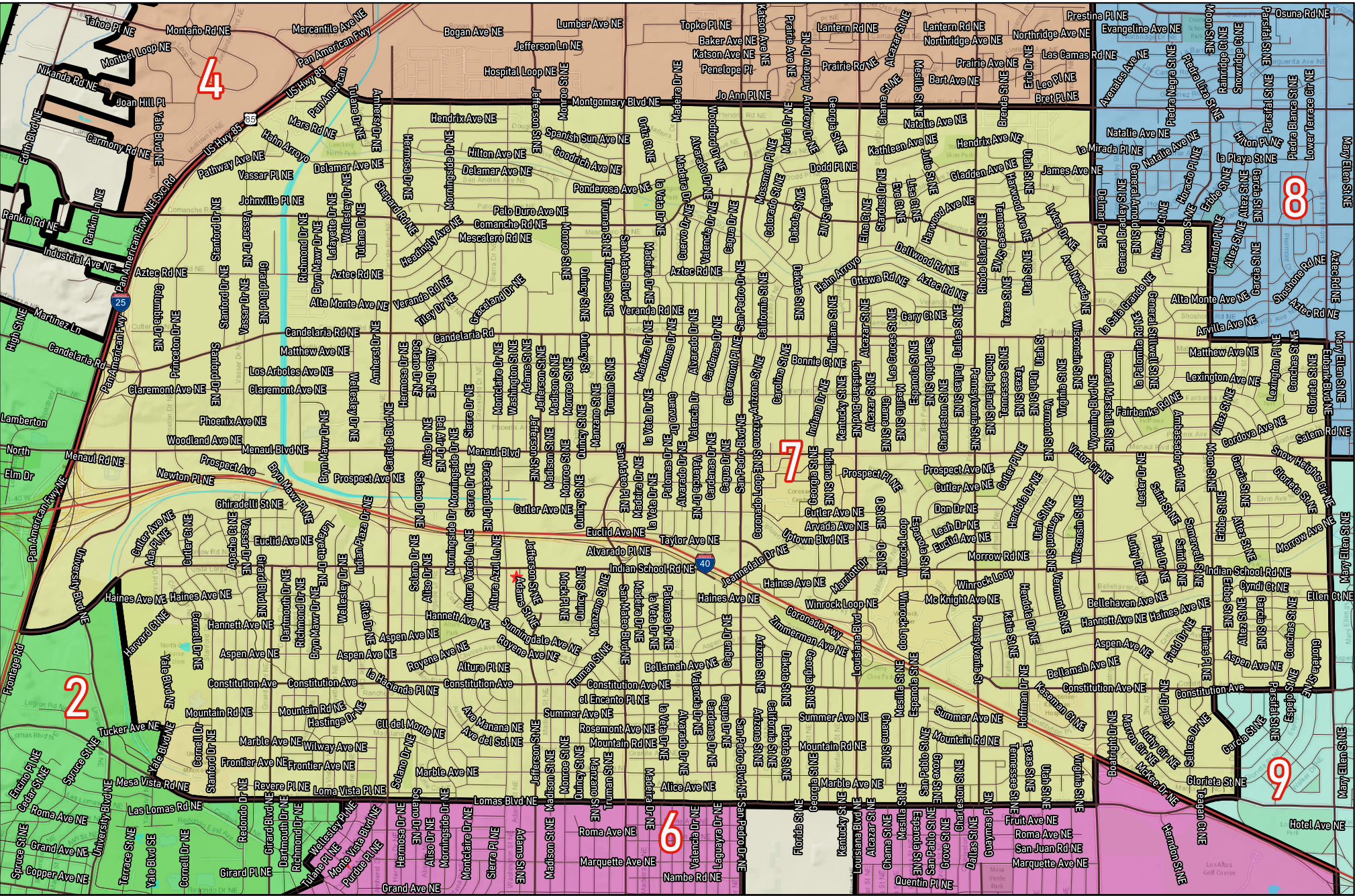
★ City Councilors

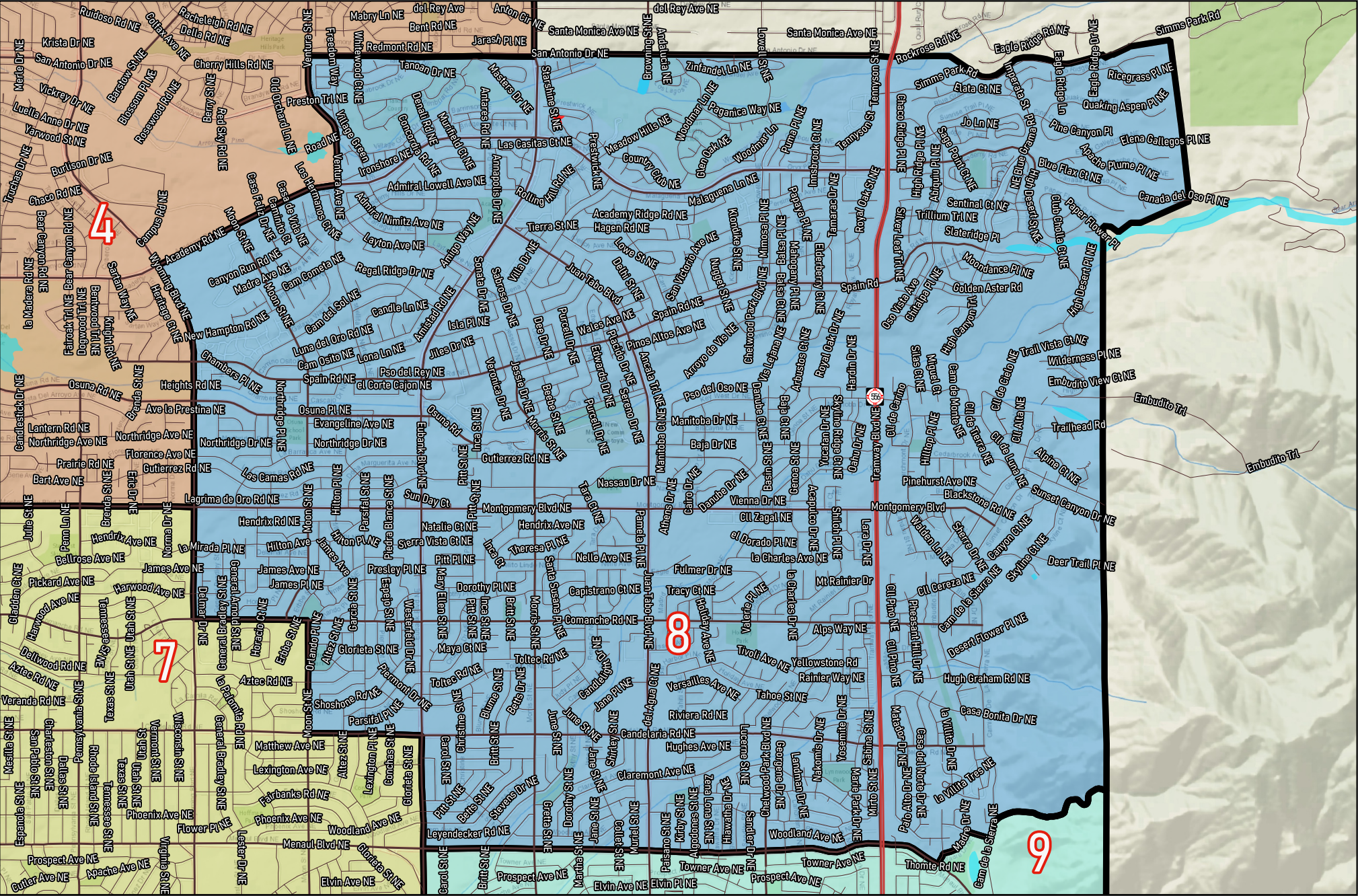


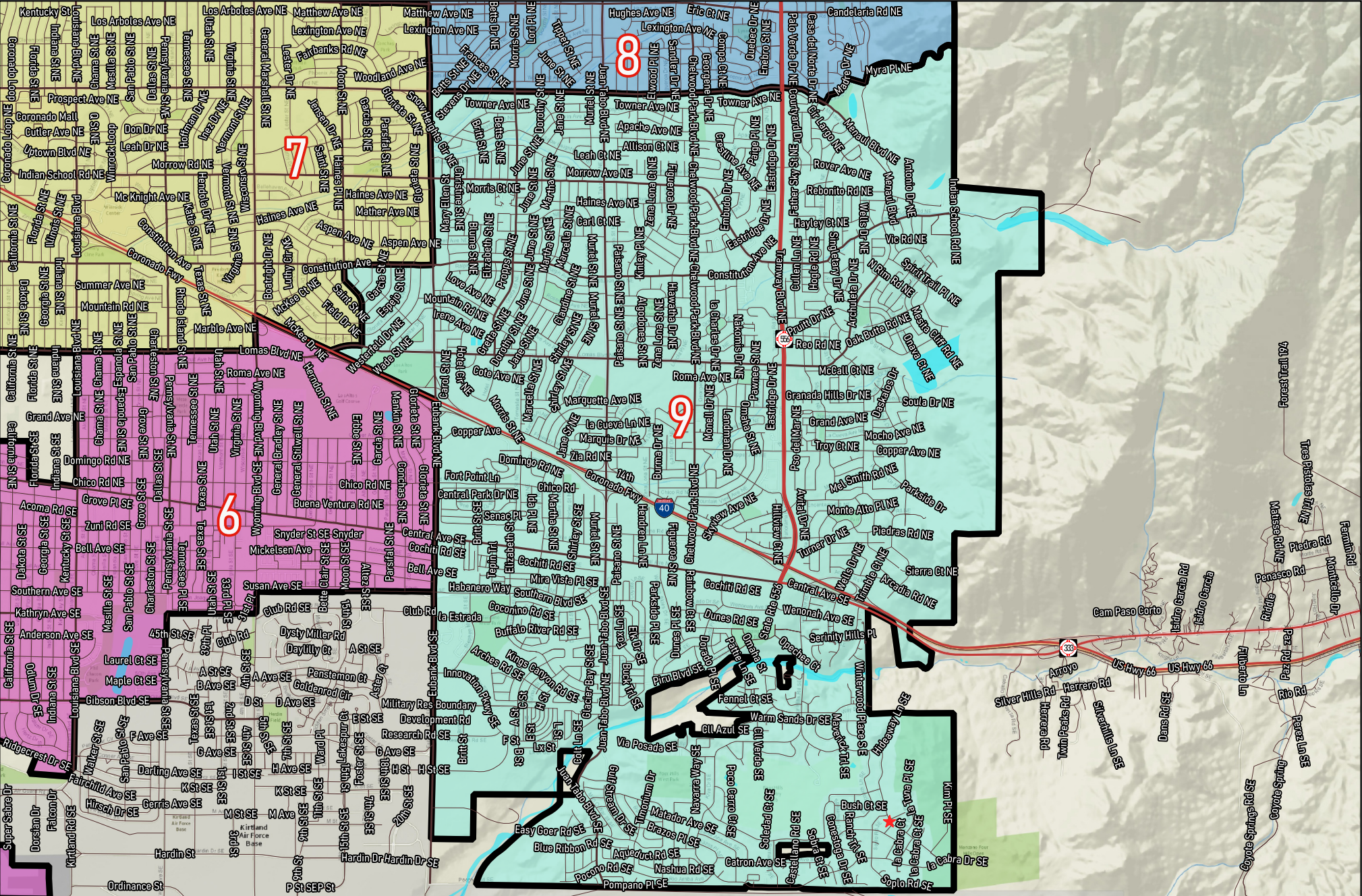






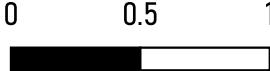






Research & Polling, Inc. distributes this map assuming no liability for any errors, omissions, or inaccuracies in the information provided regardless of the cause in reliance upon any maps.

★ City Councilors



City of Albuquerque
Citizen Map 3 - revised

2020 Census
Redistricting

District	Pop	Deviation	Hispanic	Non-Hispanic									
				White		Native American		Black		Asian		Other Races	
1	65,323	2,596 4.1%	37,135 56.8%	19,659	30.1%	2,970	4.5%	1,948	3.0%	1,441	2.2%	2,170	3.3%
18+	50,736		27,090 53.4%	17,157	33.8%	2,222	4.4%	1,551	3.1%	1,206	2.4%	1,510	3.0%
2	63,106	379 0.6%	35,183 55.8%	20,194	32.0%	2,715	4.3%	1,527	2.4%	1,264	2.0%	2,223	3.5%
	52,901		27,914 52.8%	18,508	35.0%	2,299	4.3%	1,264	2.4%	1,144	2.2%	1,772	3.3%
3	64,808	2,081 3.3%	52,884 81.6%	6,693	10.3%	1,854	2.9%	1,546	2.4%	611	0.9%	1,220	1.9%
	45,473		36,164 79.5%	5,405	11.9%	1,380	3.0%	1,170	2.6%	522	1.1%	832	1.8%
4	60,415	-2,312 -3.7%	20,380 33.7%	28,892	47.8%	2,828	4.7%	1,545	2.6%	4,047	6.7%	2,723	4.5%
	48,196		15,094 31.3%	24,888	51.6%	2,084	4.3%	1,189	2.5%	3,104	6.4%	1,837	3.8%
5	63,144	417 0.7%	28,967 45.9%	24,506	38.8%	2,799	4.4%	2,079	3.3%	1,958	3.1%	2,835	4.5%
	47,124		20,019 42.5%	19,999	42.4%	2,030	4.3%	1,659	3.5%	1,561	3.3%	1,856	3.9%
6	62,242	-485 -0.8%	31,326 50.3%	20,353	32.7%	3,763	6.0%	2,768	4.4%	1,409	2.3%	2,623	4.2%
18+	49,722		23,115 46.5%	18,213	36.6%	2,966	6.0%	2,221	4.5%	1,240	2.5%	1,967	4.0%
7	62,560	-167 -0.3%	24,276 38.8%	28,431	45.4%	3,345	5.3%	1,799	2.9%	1,904	3.0%	2,805	4.5%
18+	51,511		18,453 35.8%	25,315	49.1%	2,568	5.0%	1,474	2.9%	1,623	3.2%	2,078	4.0%
8	61,130	-1,597 -2.5%	16,273 26.6%	36,064	59.0%	1,986	3.2%	1,334	2.2%	2,508	4.1%	2,965	4.9%
18+	50,519		12,236 24.2%	31,476	62.3%	1,505	3.0%	1,078	2.1%	2,052	4.1%	2,172	4.3%
9	61,822	-905 -1.4%	22,807 36.9%	28,173	45.6%	2,935	4.7%	2,103	3.4%	2,899	4.7%	2,905	4.7%
18+	49,378		16,549 33.5%	24,602	49.8%	2,155	4.4%	1,648	3.3%	2,409	4.9%	2,015	4.1%
Totals	564,550	Ideal: 62,727	269,231 47.7%	212,965	37.7%	25,195	4.5%	16,649	2.9%	18,041	3.2%	22,469	4.0%
18+	445,560		196,634 44.1%	185,563	41.6%	19,209	4.3%	13,254	3.0%	14,861	3.3%	16,039	3.6%