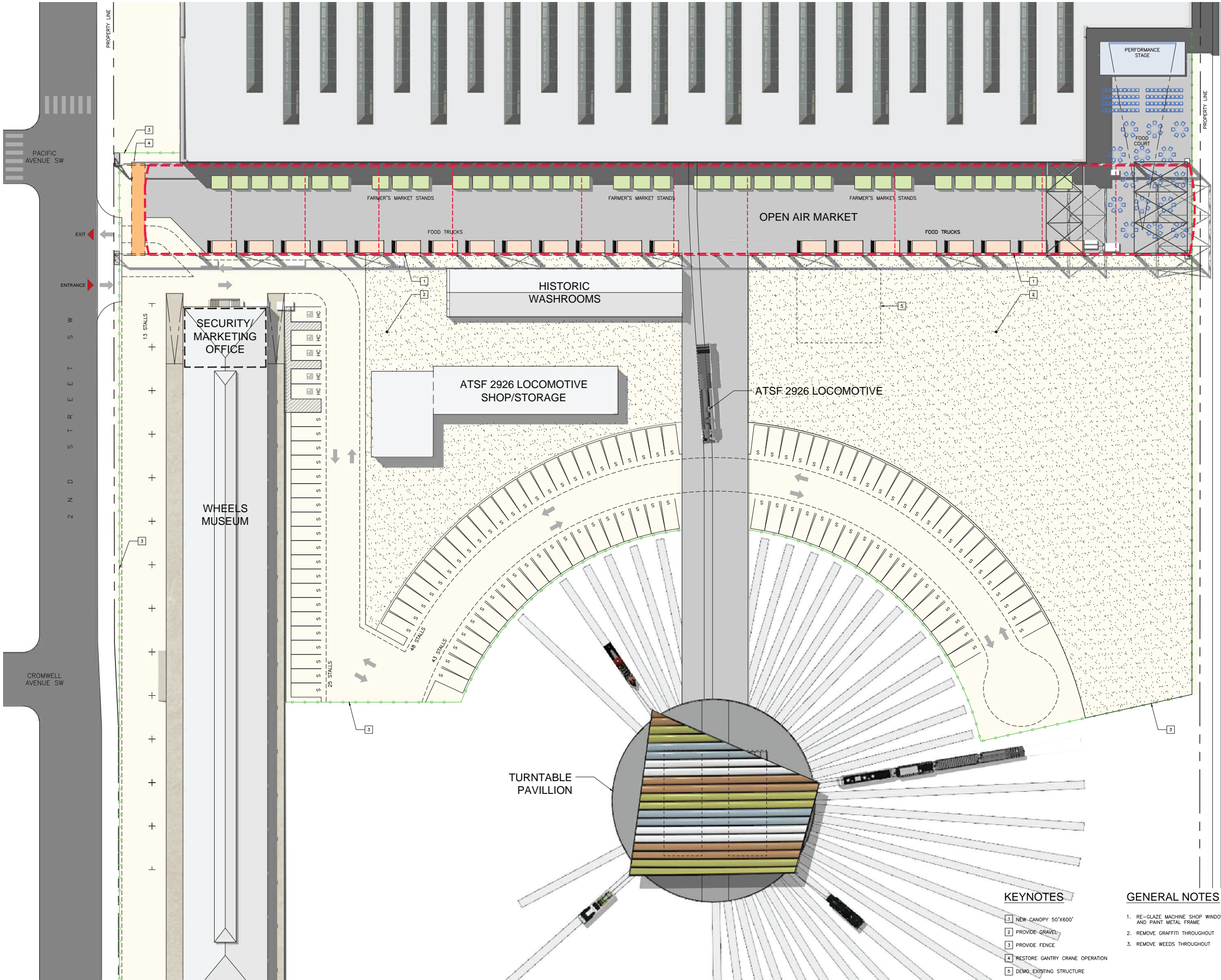


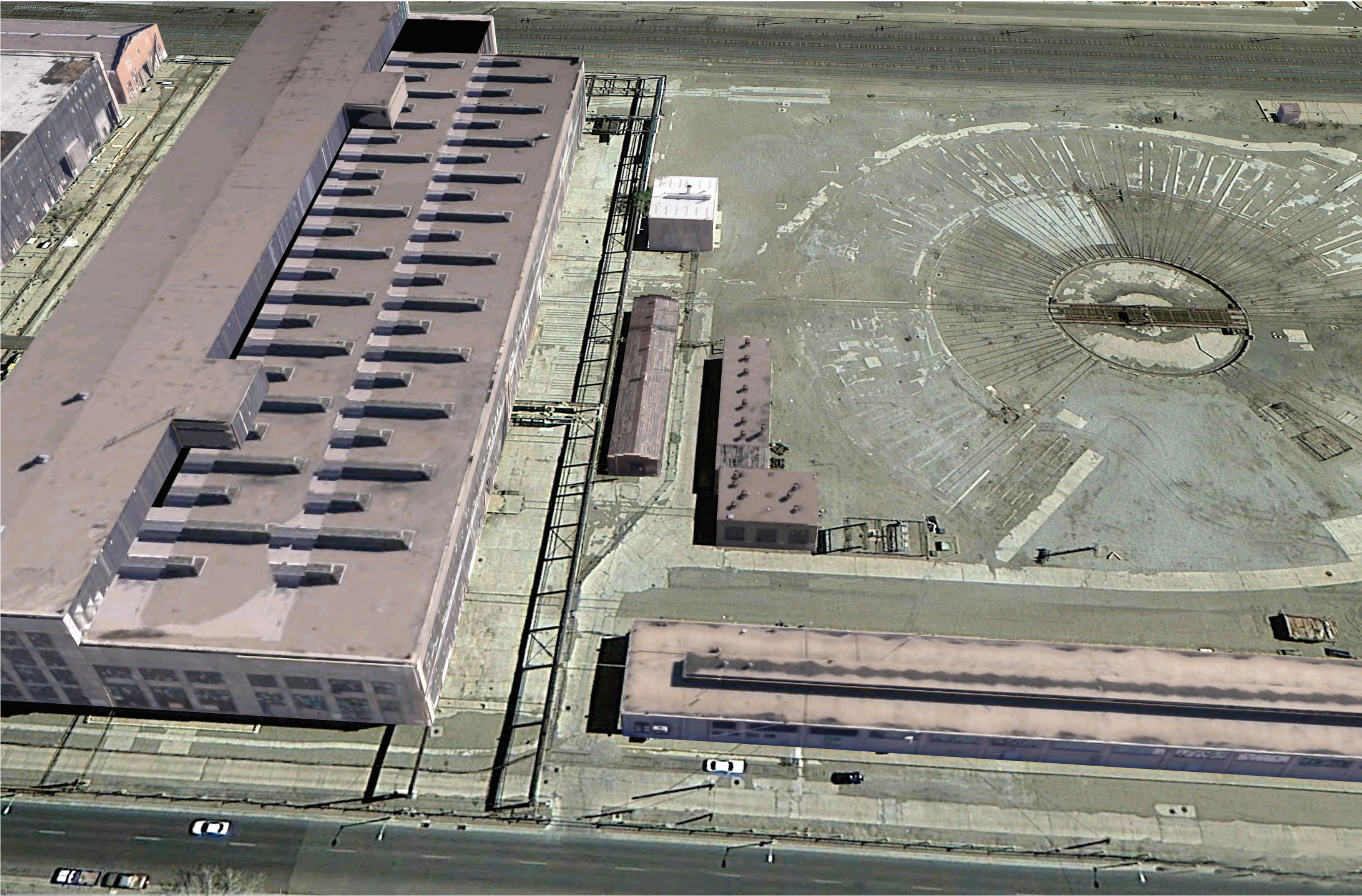




15 Ton Gantry Crane Connected to South Elevation of Machine Shop

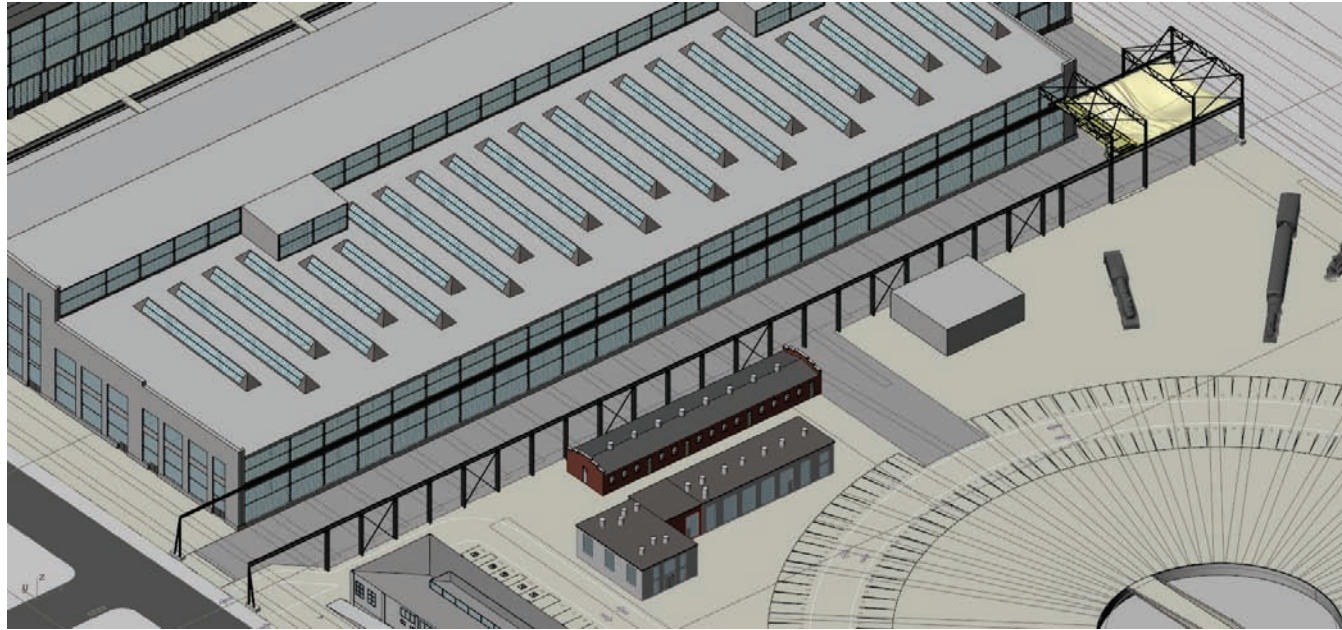
PHASE 1 SITE PLAN







Traditional Street Shades, Malaga, Spain

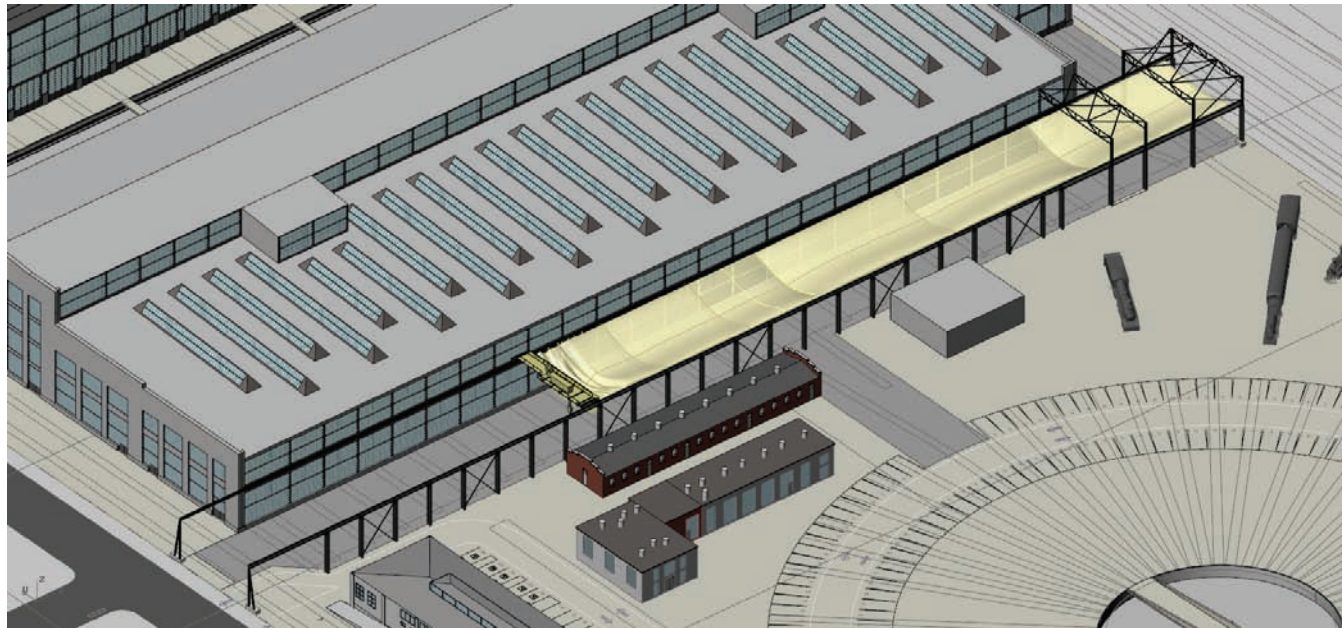


CONCEPT:

INSTALL A NEW CANOPY WITHIN THE HISTORIC GANTRY SUPPORT STRUCTURE ALONG THE SOUTH ELEVATION OF THE MACHINE SHOP.

USE THE 15 TON GANTRY CRANE TO PULL THE CANOPY INTO POSITION.

THE CANOPY ITSELF IS MADE FROM 2 LAYERS OF COLORED PVC FABRIC WELDED AT THE SEAMS TO FORM A "PILLOW" TYPE STRUCTURE. THE CANOPY IS CONTINUOUSLY ATTACHED TO THE GANTRY CRANE ALONG THE WEST.



ONCE IN PLACE, THE CANOPY IS INFLATED VIA AIR COMPRESSORS INSTALLED ON THE GANTRY CRANE. INFLATION OF THE CANOPY CREATES A STRUCTURAL MEMBRANE THAT CAN SPAN THE 50' OPENING CREATING A SHADED AND RAIN PROOF ENCLOSURE.

WHEN FULLY UNFURLED, THE CANOPY WILL SPAN 50' IN THE SHORT DIRECTION AND WILL EXTEND 600' IN THE LONG DIRECTION.

