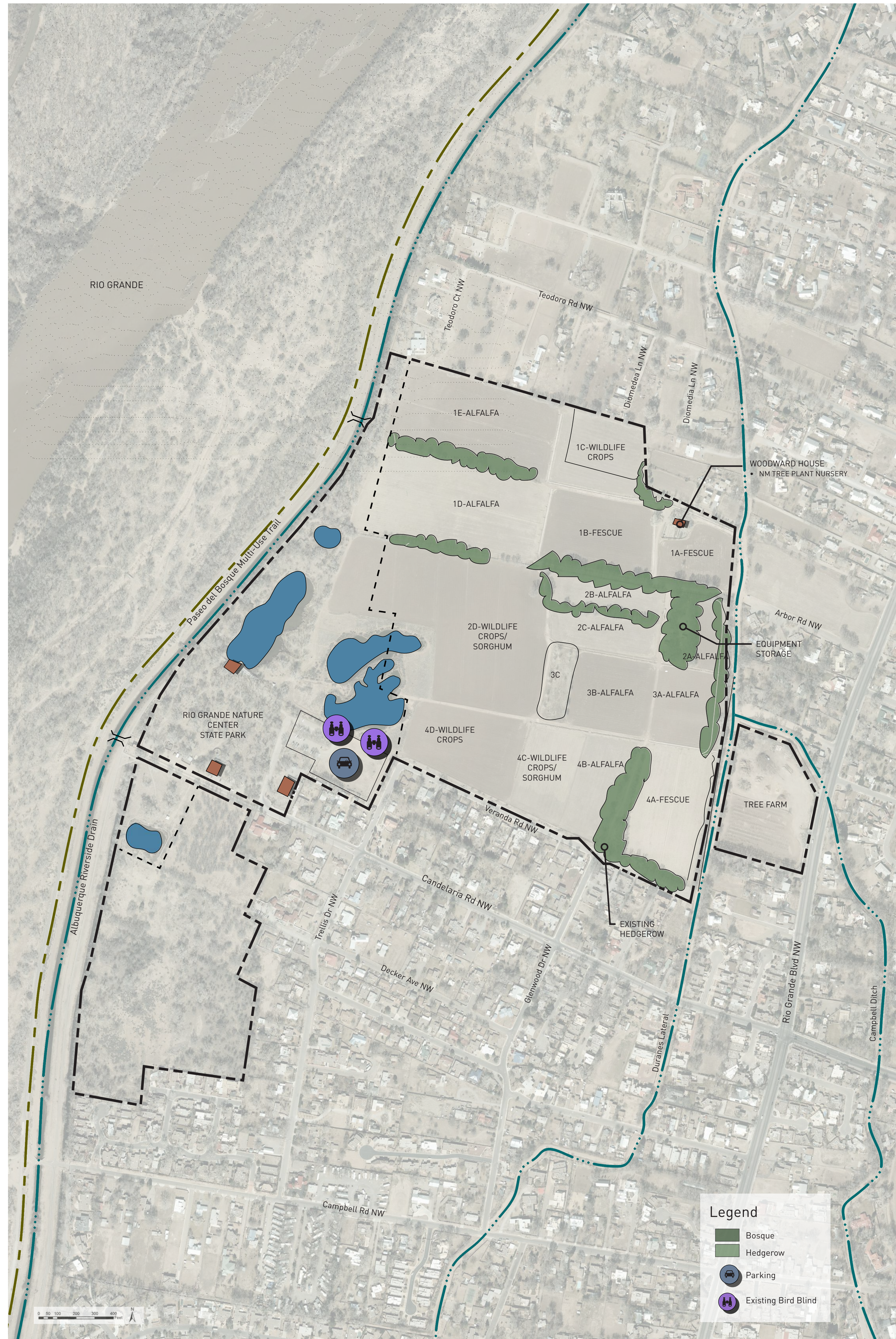


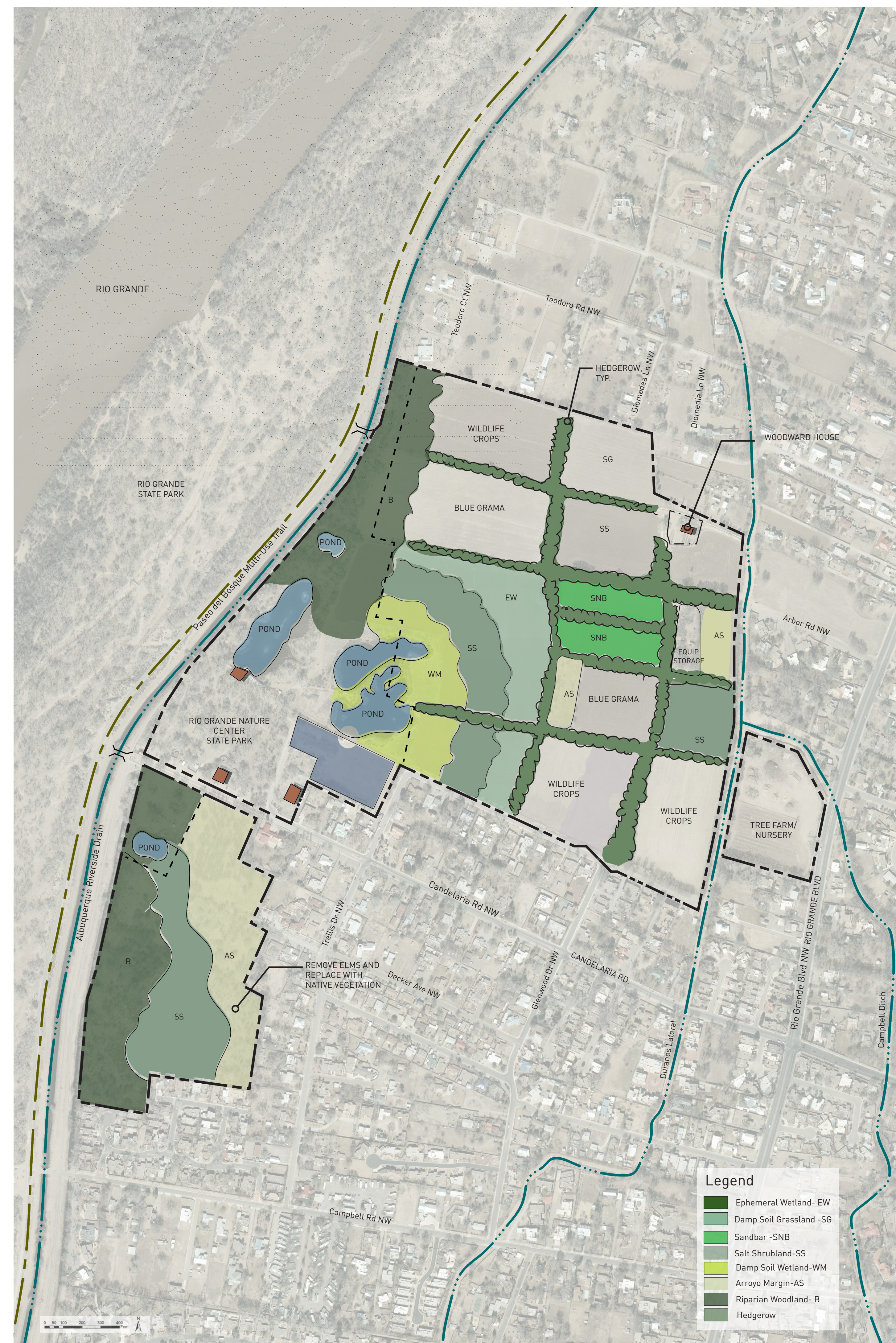


# CANDELARIA NATURE PRESERVE

## Habitat Plan



EXISTING CONDITIONS



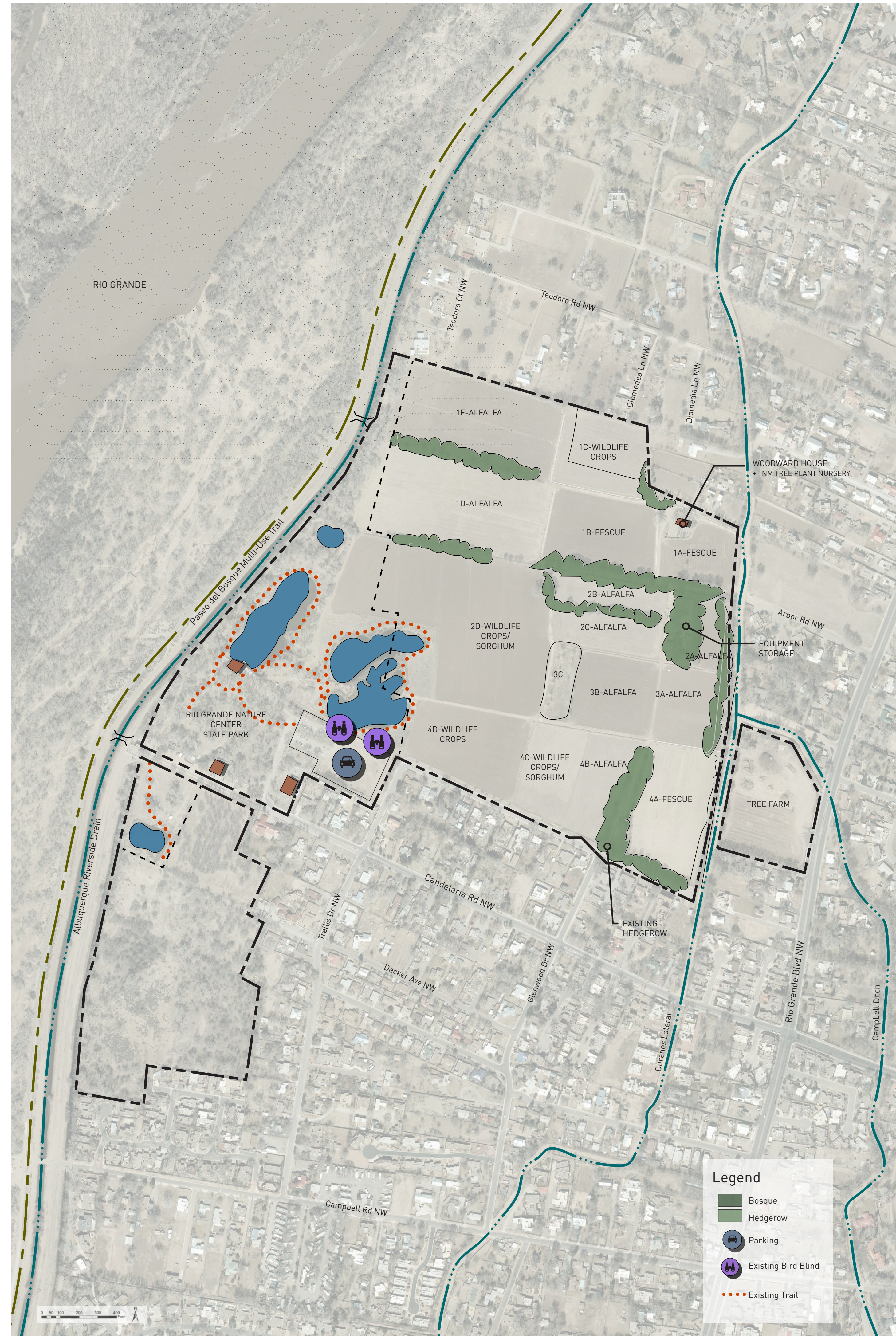
TRANSITION HABITAT PLAN



20 YEAR HABITAT PLAN

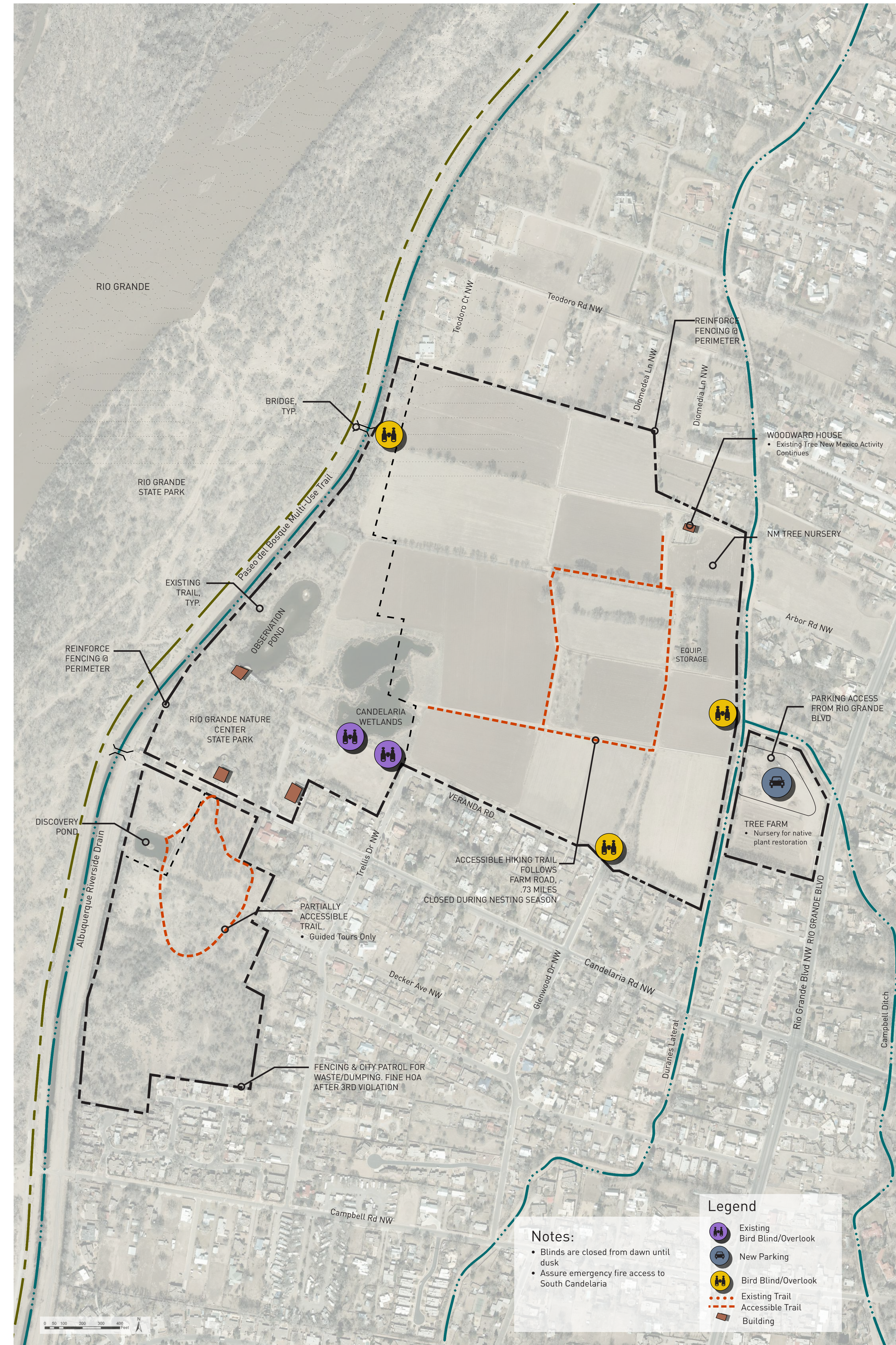


## Public Access and Outdoor Recreation



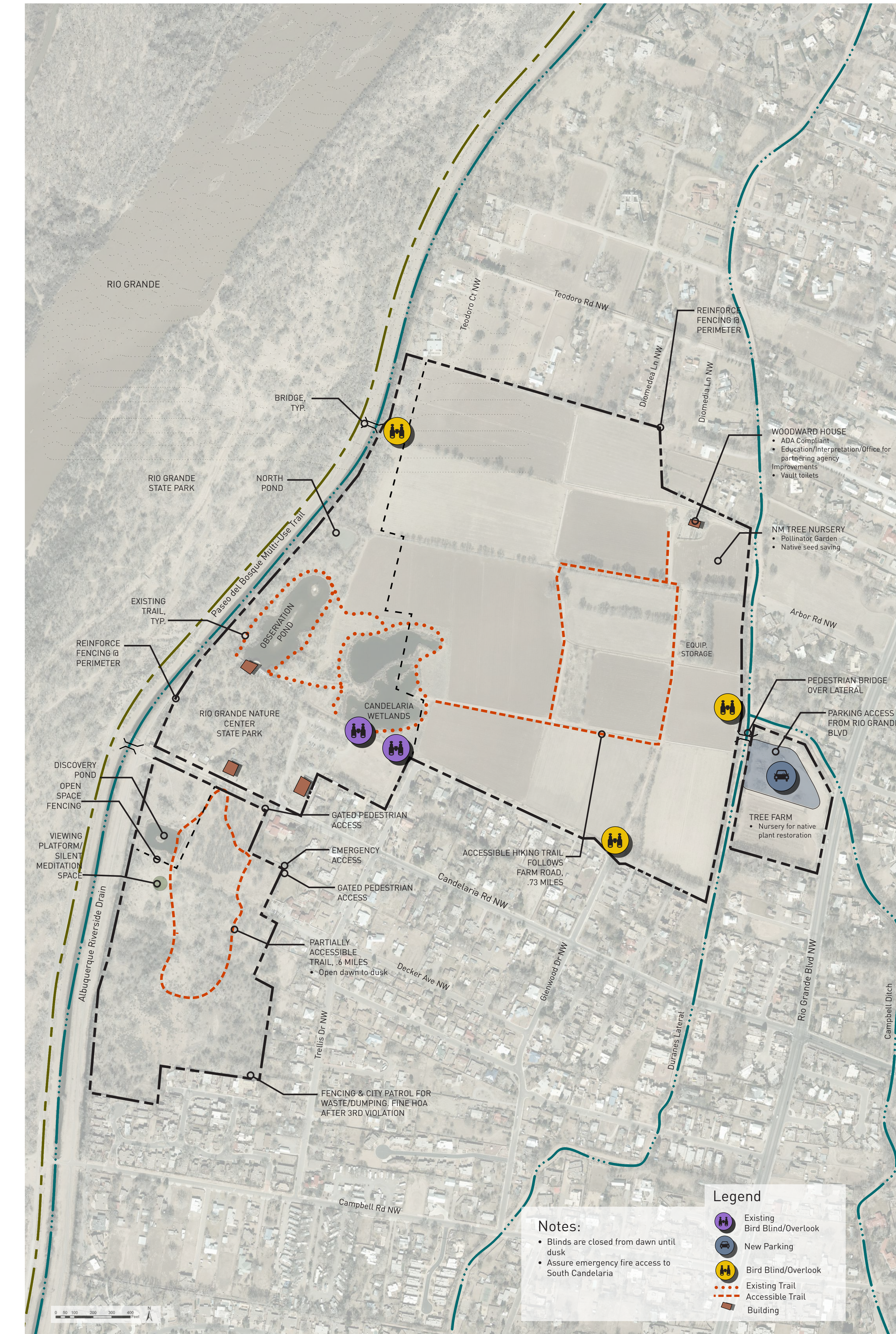
### EXISTING CONDITIONS

- No open access
- Tours
- Youth Crews
- Bird blind at Rio Grande Nature Center



### LIMITED OUTDOOR RECREATION ACCESS AND ACTIVITY

- Prohibited items include dogs (except service dogs), hunting, running/jogging, kite flying, drones, biking, motorized vehicles (except maintenance), rentals and use for private events and film making
- Limited trails
- Guided tours
- Bird blinds
- Interpretive signage at Woodward House



### INCREASED OUTDOOR RECREATION ACCESS AND ACTIVITY

- Same features as limited access plan with the following additions:
- Candelaria South open to public and includes longer trail
- Viewing platform and silent meditation area
- Additional wildlife compatible activities by Woodward House and adjacent field