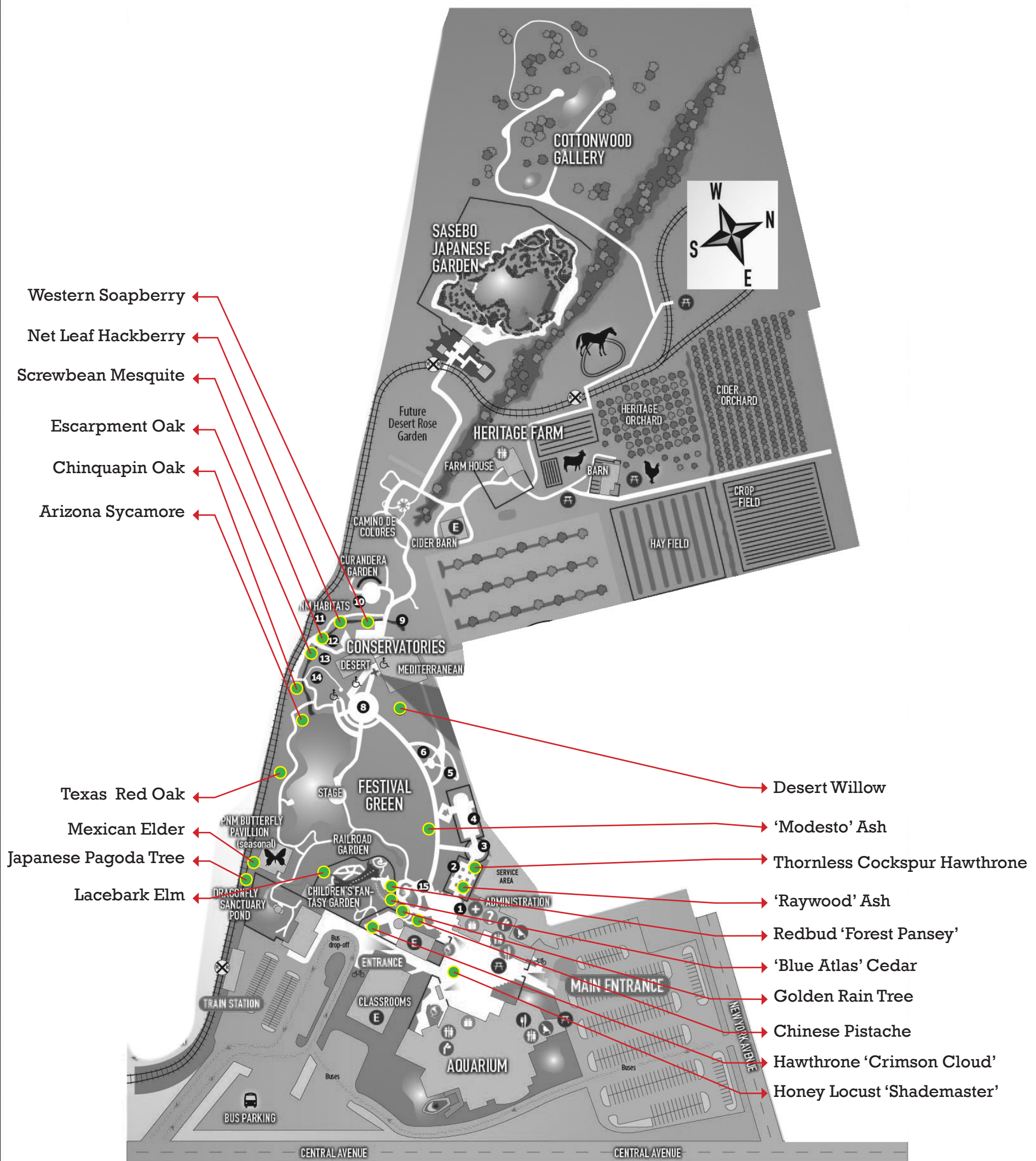


ABQ BIOPARK BOTANIC GARDEN



Tree Tour: Trees for Albuquerque residential landscapes

- **Arizona Sycamore** - *Platanus wrightii*
- **Blue Atlas Cedar** - *Cedrus atlantica* 'Glauca'
- **Chinese Pistache** - *Pistacia chinensis*
- **Chinquapin Oak** - *Quercus muehlenbergii*
- **Desert Willow** - *Chilopsis linearis*
- **Escarpment Live Oak** - *Quercus fusiformis*
- **Texas Red Oak** - *Quercus buckleyi*
- **English Hawthorne 'Crimson Cloud'** - *Crataegus laevigata* 'Crimson Cloud'
- **Goldenrain Tree** - *Koelreuteria paniculata*
- **Honeylocust 'Shademaster'** - *Gleditsia triacanthos* 'Shademaster'
- **Japanese Pagoda Tree** - *Styphnolobium japonicum*
- **Lacebark Elm** - *Ulmus parvifolia*
- **Mexican Elder** - *Sambucus mexicana*
- **Net-Leaf Hackberry** - *Celtis reticulata* Torr.
- **Thornless cockspur Hawthorn** - *Crataegus crus-galli* *Inermis*
- **Modesto Ash** - *Fraxinus velutina* 'Modesto'
- **Raywood Ash** - *Fraxinus angustifolia* 'Raywood'
- **Redbud 'Forest Pansey'** - *Cercis Canadensis* 'Forest Pansey'
- **Sqrewbean Mesquite** - *Prosopis pubescens*
- **Western Soapberry** - *Sapindus drummondii*