



Welcome to the ABQ BioPark Botanic Garden



On your visit today, we hope that you discover the Gardens by taking a closer look. Follow this scavenger hunt as you journey through some of the garden exhibits!

ABQ BIOPARK

As you enter the Botanic Gardens, what fantasy animal is on your left?

Enter the **Spanish Moorish Garden**:

How many trees are here? _____

How many light poles are here? _____

What bushes are along the edges of this garden? (hint: smell them)

What plant here is a vegetable that many people like to eat? _____

ENTERING INTO THE NEXT GARDEN, the Jardin Redondo,
how do the gates look? Draw them here. You can draw one if you want to.

In this garden fountain,
how many places will
water come out of it? _____



What kind of plants are growing around the evergreen trees along the outside of this garden? _____
(hint: they have thorns and smell nice)

Next is the **Ceremonial Garden**.

What is the creeping plant on the ground here? _____

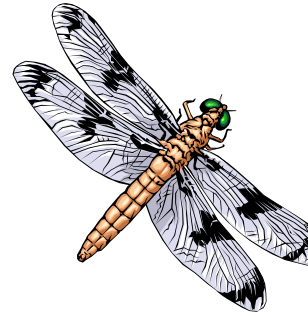
What overhanging plant blocks the sun in this structure? _____

Entering the Festival Green, how many trees are growing on the grass? _____

Find two trees with leaves of different shapes, describe them below

1)

2)



Walk back toward the brick path and the Pollinator Garden.

Do you see anymore ARTICHOKE plants? _____ How many? _____
What is the metal sculpture animal in this section?



ENTER THE Mediterranean Conservatory (from the south side)

How does it feel in here? _____

How does it smell? _____

On the MURAL inside, can you recognize six different fruits and vegetables in the painting? List some of the ones you see.



1.

3.

5.

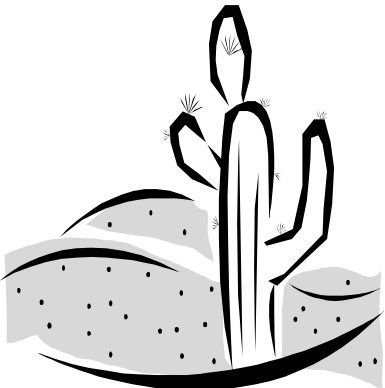
2.

4.

6.

Are there any birds in the birdbath? _____

What kind of tree is in the front of the mural? _____



Walk into the Desert Conservatory

Many of the plants in here are called succulents. What kind of **adaptations** do you see that might help these plants have to survive in hot, dry climates?

Downstairs in the **Desert Conservatory** look at some of the signs that tell you about the exhibit.

What is the largest Desert in North America?

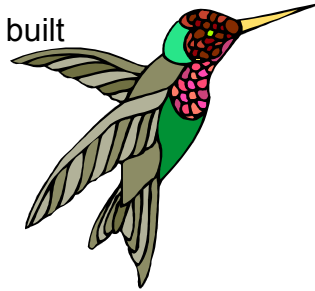
Where does the FISHHOOK BARREL CACTUS get its name?

How does the air feel compared to the Mediterranean Conservatory?

WHEN YOU LEAVE THE DESERT CONSERVATORY, you see a structure built just outside. How was this structure created? _____

What animal drinks from these feeders? _____

Look at the PRICKLY PEAR. Are there any flowers or fruit on it? What colors? _____



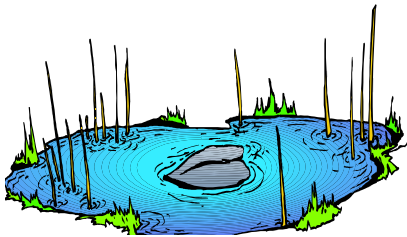
In the **Healer's Garden**, there are many herbs here used for healing. What is the Spanish word for a "traditional healer?" _____

Can you find the LAMB'S EAR? What does it feel like?

AS YOU ARE WALKING SOUTH DOWN THE NEW MEXICO HABITATS PATH, notice the black rock on your right. What kind of rock is this?

Draw a **limb** of the CHOLLA CACTUS here:

Draw a **pad** of the PRICKLY PEAR here:



LOOK AT THE POND!

What plants are growing in the middle of the pond?

Sit quietly at the pond. Look at the lily pads. Is there any animal life here? What animals would live here?

REMEMBERING

List THREE things you learned on your scavenger hunt today:

1.

2.

3.





All About Plants!

Circle each word as you find it.

Answers are horizontal, vertical and diagonal.

Air

Branch

Flower

Leaf

Petal

Root

Seed

Soil

Stem

Sunlight

Trunk

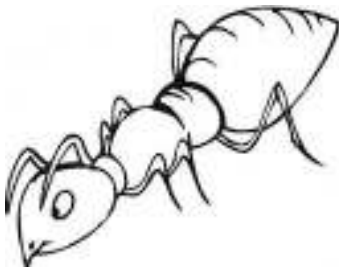
Water





ABQ BioPark BOTANIC GARDEN SEARCH

Write the name next to the different types of plants and insects that can be found in the Botanic Gardens



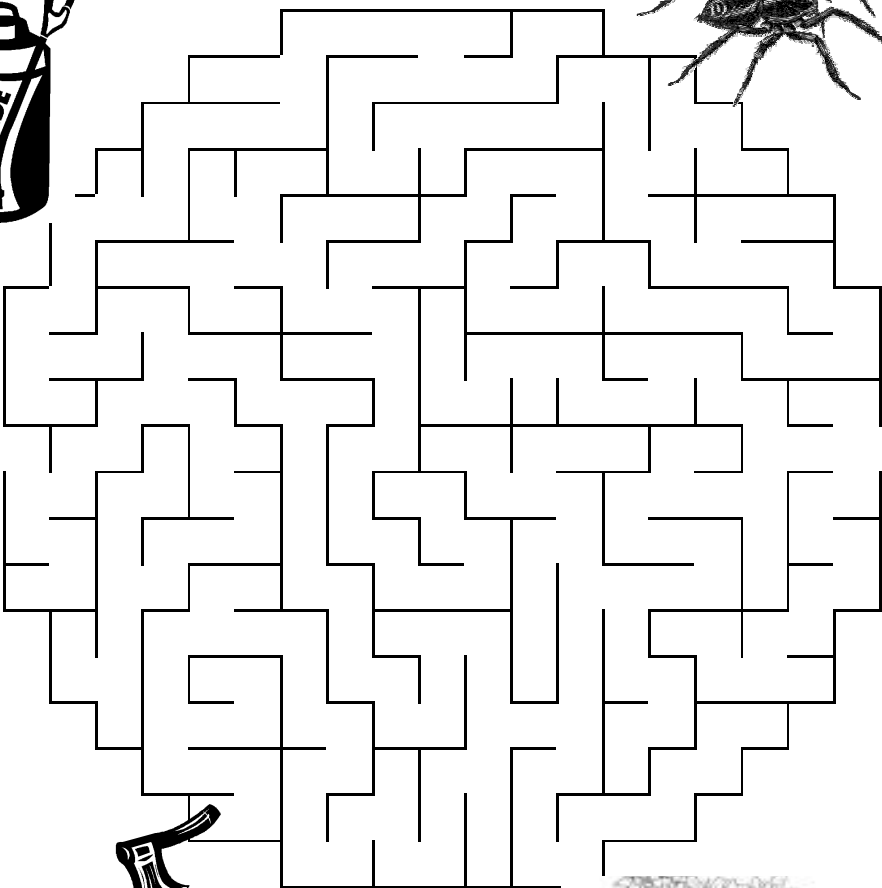
Cottonwood Leaf
Sunflower
Dragonfly
Pine Tree
Ant
Bumble bee




Pollinate!

Bees visit flowers to collect nectar and pollen to take back to their hives. As they fly from one flower to the next, they leave a little pollen behind on the new flower and pollinate it. Then the plant can make a seed!


Can you help this bee find its way to the flower at the end of the maze and avoid the dangers along the way



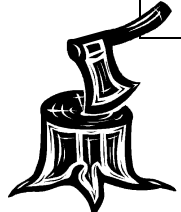
Pesticide!






Predator!



Habitat Loss



Predator!



Desert Plant Scavenger Hunt

Find and identify plants that meet the descriptions below. Record the plant's common and scientific name if possible. If the plant you find is not labeled and you do not know its identity, draw a sketch of it below. Use the Desert Conservatory and areas just north of it for your hunt.

Find a plant that has spines for protection.

Find a plant that has no leaves – how might it perform photosynthesis?

Find a plant that appears to be edible to animals and may hold either fruit or seeds.

Find a plant that a portion of it appears to be dead, yet the plant is still clearly alive.

Find a plant that has waxy leaves.

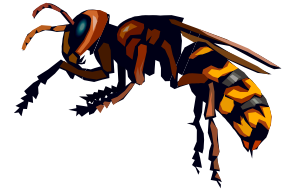
Find a plant that has fuzzy or hairy leaves.

Find a plant that has very small leaves (relative to plant size).

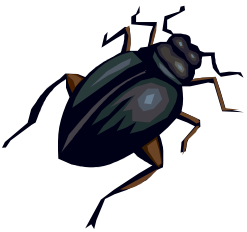
Find a plant with a strong smell.

Find a plant that can swell to store water.

Incredible Insects Word-search



XAVRALMTNKNYAA
ABRTDAEHNAOELPN
RTUELOTXOTPMFHT
OLATPOAIOYOOLIE
HUWNTPMCDRDEDN
TDISTEOHOIHBSCN
MANTISRHCDTAMOA
FPGOQYPFSORPACE
LWSUSMHTLSAUDKB
EWIAYFOOCYAPBRE
ATLNWMSNREMROE
OITEKCIRCNSOGAT
SPROBOSCISENTCL
SYLFNOGARDLTIHE
EGGNOTELEKSOXEV



ABDOMEN

ADULT

ANT

ANTENNAE

APHID

ARTHROPOD

BEE

BEETLE

BUG

BUTTERFLY

CHRYSLIS

COCKROACH

COCOON

CRICKET

DAMSELFLY

DRAGONFLY

EGG

EXOSKELETON

FLEA

FLY

GRASSHOPPER

HEAD

HORNET

INSECT

KATYDID

LARVA

MANTIS

METAMORPHOSI

S

MOLT

MOSQUITO

MOTH

NYMPH

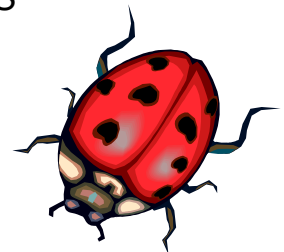
PROBOSCIS

PUPA

THORAX

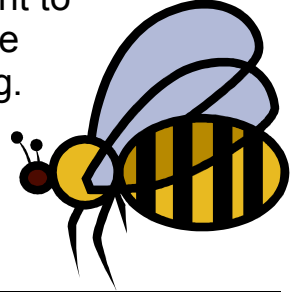
WASP

WINGS



Pollinator Pursuit

Looking for a new way to visit the Garden today? Use this scavenger hunt to keep an eye out for pollinators during the rest of your visit. When you see one, make an observation about where you saw it, and what it was doing.



Where did you see it?	What is it? Bee, hummingbird, butterfly, moth, fly, midge, mosquito, bat something else?	What is it doing?
Pollinator Garden		
New Mexico Habitats		
Curandera Garden		
Camino de Colores		
Japanese Garden		
Heritage Farm		



Lesser Long-Nosed Bat

Leptonycteris curasoae yerbabuenae