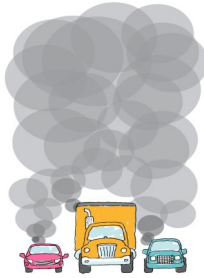


All vehicles operating in ABQ are subject to smoking vehicle laws



Citizens may register a complaint regarding a smoking vehicle. If a complaint is filed against a vehicle, the owner must present the vehicle to VPMD at 1500 Broadway Blvd NE for an inspection.

Smoking vehicles will be given 60-days to take corrective action. If the vehicle is not brought in for an inspection, the owner may be fined up to \$500 by law enforcement. Please call 311 to file a smoking vehicle complaint or file online at: www.cabq.gov/aircare

At VPMD we offer **FREE** Retest and Time Extension for Repairs

Free retest: Vehicles failing an emission test may receive **one** free retest within **90 days**.

Bring your failed test and vehicle to VPMD.

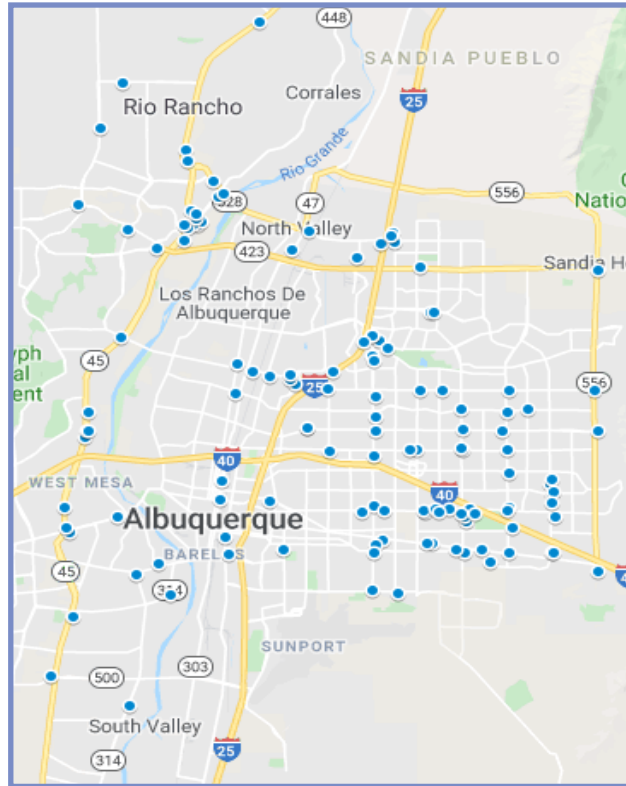
Time extension: To apply for a time extension please refer to the instructions on the back of the failed test or email us at:

VPM@cabq.gov

When considering the purchase of a used vehicle please

TEST BEFORE YOU BUY!

Air Care Station Locations & Costs



- For your convenience, more than 130 Air Care Stations are available. Test fees must be clearly posted on their official Air Care Station sign. Fees vary and are set by individual test stations.
- For a list of emission testing location please visit our website at www.cabq.gov/airquality or simply scan the QR Code.



Printed on recycled paper

Last revised: January 2020

AIR
CARE
NM

Albuquerque
Bernalillo County

Program Info

What You Should Know About
Emission Testing and Repair



Vehicle Pollution Management Program

1500 Broadway Boulevard NE
Albuquerque, NM 87102

VPM@cabq.gov
(505) 764-1110

www.cabq.gov/aircare

Scan for more information



Air Pollution is a threat to our health and our economy

Motor vehicles are the primary source of air pollution in the Albuquerque area. The emissions testing program was started in 1983 to reduce carbon monoxide, hydrocarbons and visible smoke from motor vehicles and oxides of nitrogen, as these both contribute to ground-level ozone or smog.

On the average, 24,000 vehicles fail every year. Most vehicles are repaired and pass a retest within 90-days. Albuquerque/Bernalillo County residents and fleets are required by the Federal Clean Air Act to test and repair vehicles.

Ground-Level Ozone

Ground level-ozone is an invisible gas that is harmful for our environment and hazardous to our health. Exposure to ground-level ozone can also trigger respiratory issues. For information about ground-level ozone in Albuquerque and what you can do to prevent it please visit our website at www.cabq.gov/ozone.

For more information visit us online!



Test Components

All Vehicles

- 1. Pollution control equipment** - Catalytic converter and connections.
- 2. Visible smoke** - For burning oil or poor fuel combustion resulting in toxic particulate emissions.
- 3. Gas cap(s)**- For fuel vapor leaks.

1996 and Newer Vehicles: include On-Board Diagnostic (OBDII) for testing.

1995 and Older Vehicles (Up to 35 years old): receive a Tailpipe exhaust analysis for excessive carbon monoxide and hydrocarbon levels.

Information Regarding Emissions

Emissions testing is required every two years prior to registering the vehicle with NM MVD.

If you would like to check the status of your previous emissions test, please scan the QR code.



Current Inspection Requirements

- All vehicles 35 year old or newer** under 10,001 lbs (GVWR) including government, public utility and private fleets must pass an emissions inspection to be registered in Bernalillo County, and must be tested every two years.
- Hybrid-Electric Vehicles** - Must be tested every two years.
- Change in Vehicle Ownership** - You must have a valid (within 90 days) test certificate to register your vehicle.

Vehicles Not Requiring an Emissions Inspection

- New vehicles, original owner, from dealership or manufacturer, for four years following initial registration.
- Dedicated electric vehicles
- Diesel vehicles
- Vehicles that are only used for legally sanctioned competition.
- Farm equipment
- Vehicles that are not operated on public streets and highways.
- Vehicles with a GVWR of 10,001 lbs or more.