

# **EMISSIONS INVENTORY SUBMITTAL TO EPA FOR THE 2020 NATIONAL EMISSIONS INVENTORY (NEI)**

**TRAVIS MILLER, ENVIRONMENTAL HEALTH MANAGER  
ALBUQUERQUE-BERNALILLO COUNTY AIR QUALITY CONTROL BOARD MEETING  
DECEMBER 8, 2021**

**ONE  
ALBUQUE  
RQUE**

# Air Emissions Inventories

Emissions Inventories are used to prioritize control strategies and also for inputs into air quality models.

<https://www.epa.gov/air-emissions-inventories>



## NEI Submission and Data Categories

- Agencies are required to submit data for NEI Point Sources Annually.
- Every three years (2017, 2020, etc.) EPA conducts a more detailed of all categories listed below and assist with data collection and review of all sources.
- The 2020 NEI submissions are due to EPA no earlier than December 31<sup>st</sup> 2021. EPA Begins their review in calendar year 2022. 2020 EI data will most likely be available sometime in 2023.
- Data Categories:
  - NEI point sources include emissions estimates for larger sources that are located at a fixed, stationary location.
  - NEI nonpoint sources include emissions estimates for sources which individually are too small in magnitude to report as point sources.
  - NEI onroad sources include emissions from onroad vehicles that use gasoline, diesel, and other fuels. These sources include light duty and heavy duty vehicle emissions from operation on roads, highway ramps, and during idling.
  - NEI nonroad sources include off-road mobile sources that use gasoline, diesel, and other fuels. Source types include construction equipment, lawn and garden equipment, aircraft ground support equipment, locomotives, and commercial marine vessels.
  - NEI "event" sources include fires that are reported in a day-specific format: wildfires and prescribed burns.

# AQP Collects data on Emissions Annually

- Facilities go to [www.cabq.gov/ei](http://www.cabq.gov/ei) to submit data Point Source Data.
- The program uses a comprehensive software program called SLEIS (State and Local Emissions Inventory System) to collect data from facilities, quality assure the data and report the data in the correct data format to EPA annually.



Welcome Travis E. Miller

[Home](#) | [Quick Find](#) | [My Agency](#) | [My Profile](#) | [Help](#) | [Logout](#)

## Welcome

Welcome to the State and Local Emissions Inventory System(SLEIS). SLEIS was designed to facilitate the collection and reporting of industry emissions data for state and local governments. For additional information on SLEIS, please visit the [SLEIS product website](#).

## News

[SLEIS 2.6.2 Released](#)

01-25-2021

## 2020 National Emissions Inventory (NEI)

- Detailed information about the ongoing 2020 National Emissions Inventory (NEI) project is available here:

<https://www.epa.gov/air-emissions-inventories/2020-national-emissions-inventory-nei-documentation>

# 2017 National Emissions Inventory (NEI) Data

- 2017 is the currently available data set. Data is available here.

<https://www.epa.gov/air-emissions-inventories/2017-national-emissions-inventory-nei-data>



# 2017 NEI Data Report and Mapping

<https://gispub.epa.gov/neireport/2017/>

Contact Us



## 2017 National Emissions Inventory Report

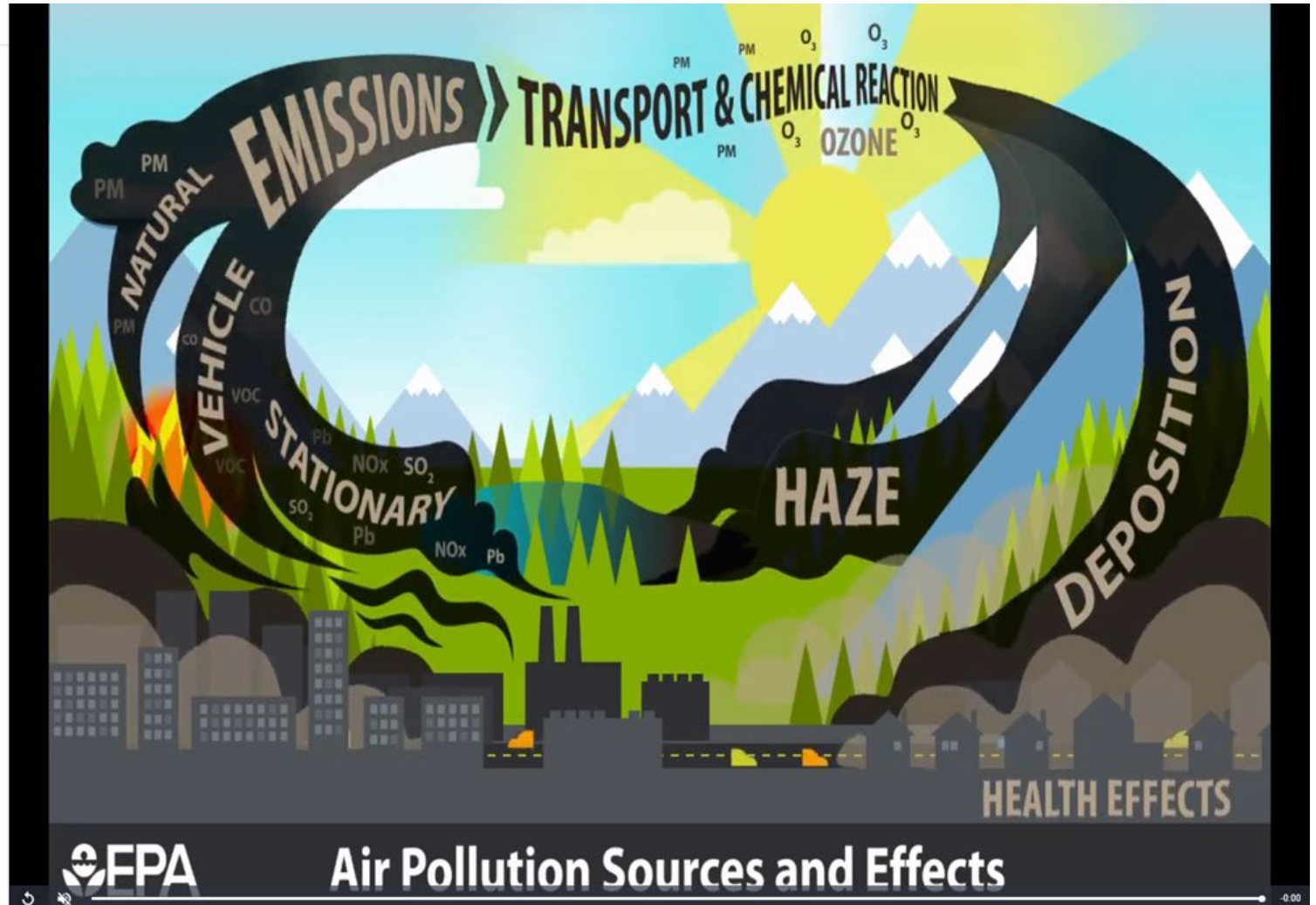
Air pollution – created by human activities such as vehicle use, industrial operations, and agriculture practices, or by natural events such as wildfires – can influence air quality and public health. This interactive National Emissions Inventory (NEI) Report explains how air emissions data are generated and used, and provides tools that explore emission trends and source contributions to air pollution. It highlights the most recent comprehensive and complete 2017 NEI, released in April 2020. [Skip ahead to NEI data.](#)

### The National Emissions Inventory (NEI)

Every three years, EPA with the help of many organizations, including state, tribal and local air pollution control agencies, industry, and researchers, compiles a comprehensive summary of air emissions data known as the NEI. The NEI includes emissions for the [six criteria air pollutants \(CAPs\)](#) ([link opens new tab](#)) and [187 hazardous air pollutants \(HAPs, or "air toxics"\)](#) ([link opens new tab](#)). While the NEI is a comprehensive set of emissions data, there may be other data for facilities that are not reported to the NEI nor represented in this application.

The emissions in this interactive report include the six CAPs, black and organic carbon (components of PM<sub>2.5</sub>) all 187 HAPs, diesel PM, and 1-bromopropane (for which a petition was granted to add to the HAP list). The CAP-related emissions are ammonia, carbon monoxide, lead, nitrogen oxides, particulate matter (PM<sub>10</sub>, PM<sub>2.5</sub>, organic carbon and black carbon), sulfur dioxides, volatile organic compounds.

Emissions Data



Air Pollution Sources and Effects

**THANK YOU!**

**ONE  
ALBUQUE  
RQUE**