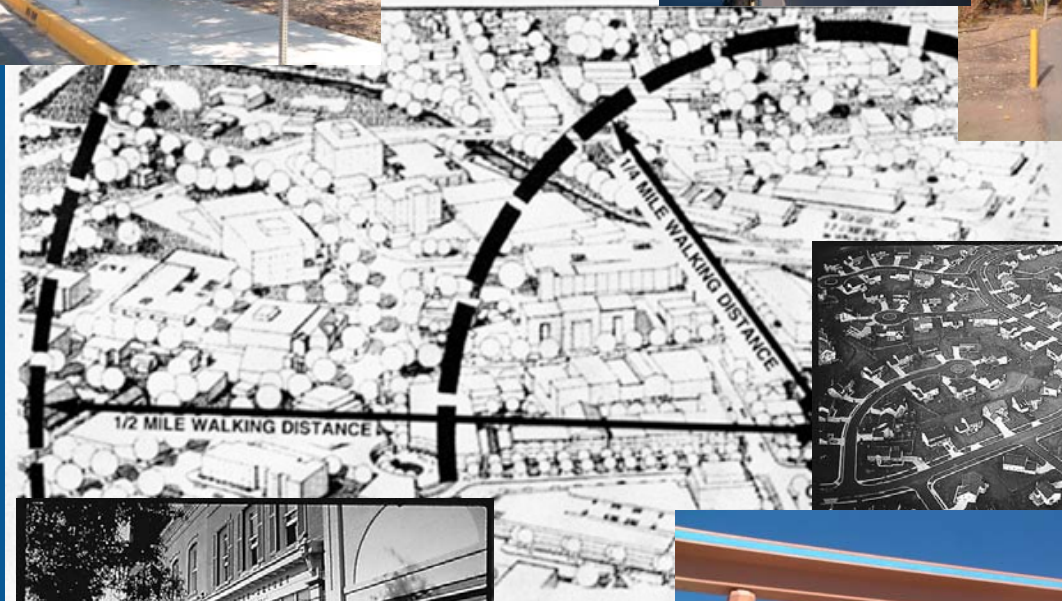




Mid-Region Metropolitan Planning Organization of the Albuquerque Metropolitan Planning Area



Metropolitan Transportation Planning

In the Albuquerque Metropolitan Planning Area

Albuquerque-Bernalillo
County Air Quality
Control Board

June 10, 2009

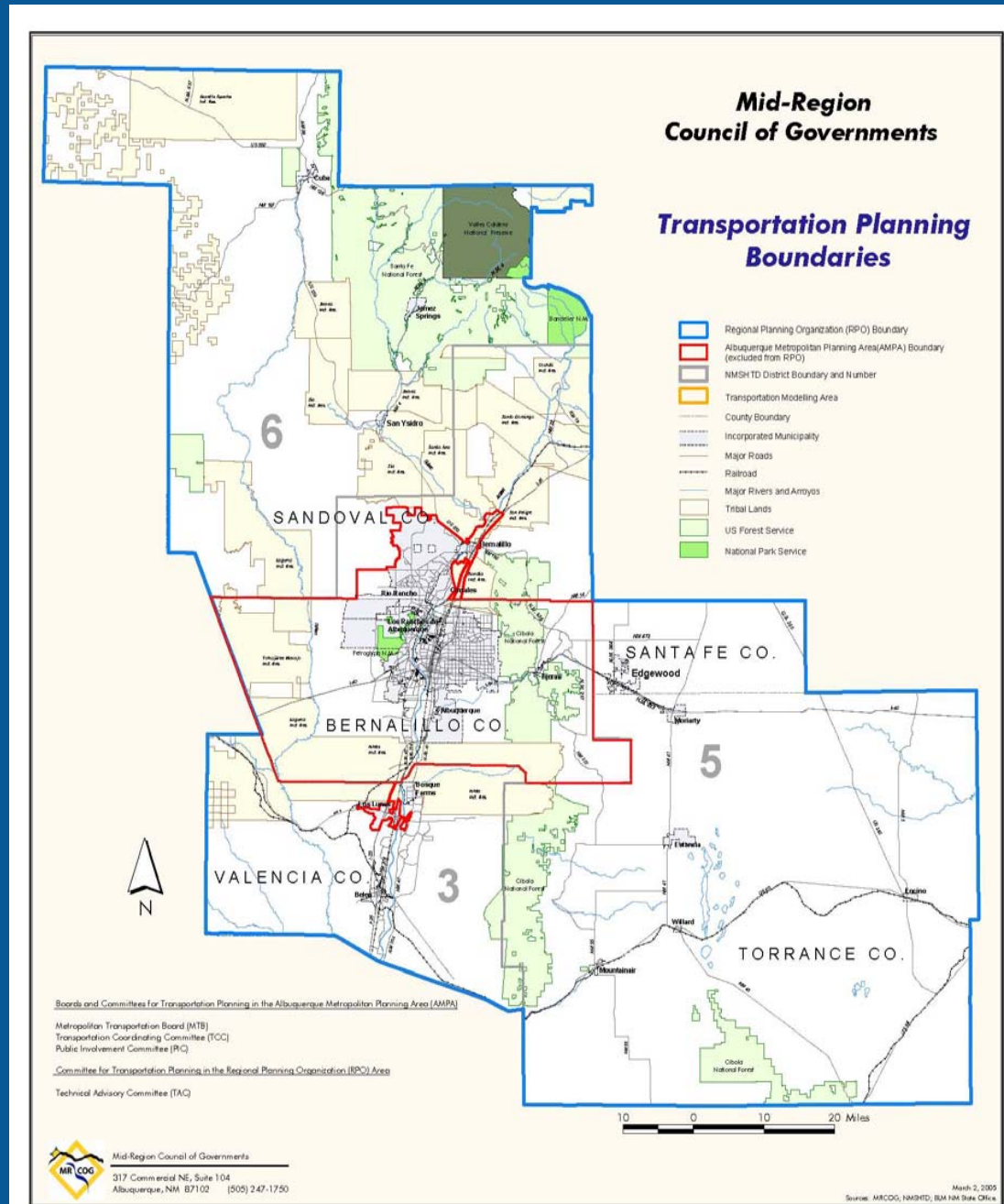
What We'll Talk About

- ◆ What is the Mid-Region Metropolitan Planning Organization (MRMPO)?
- ◆ What does the MRMPO do?
- ◆ Coordination between the MRMPO and the Albuquerque-Bernalillo County Air Quality Control Board.

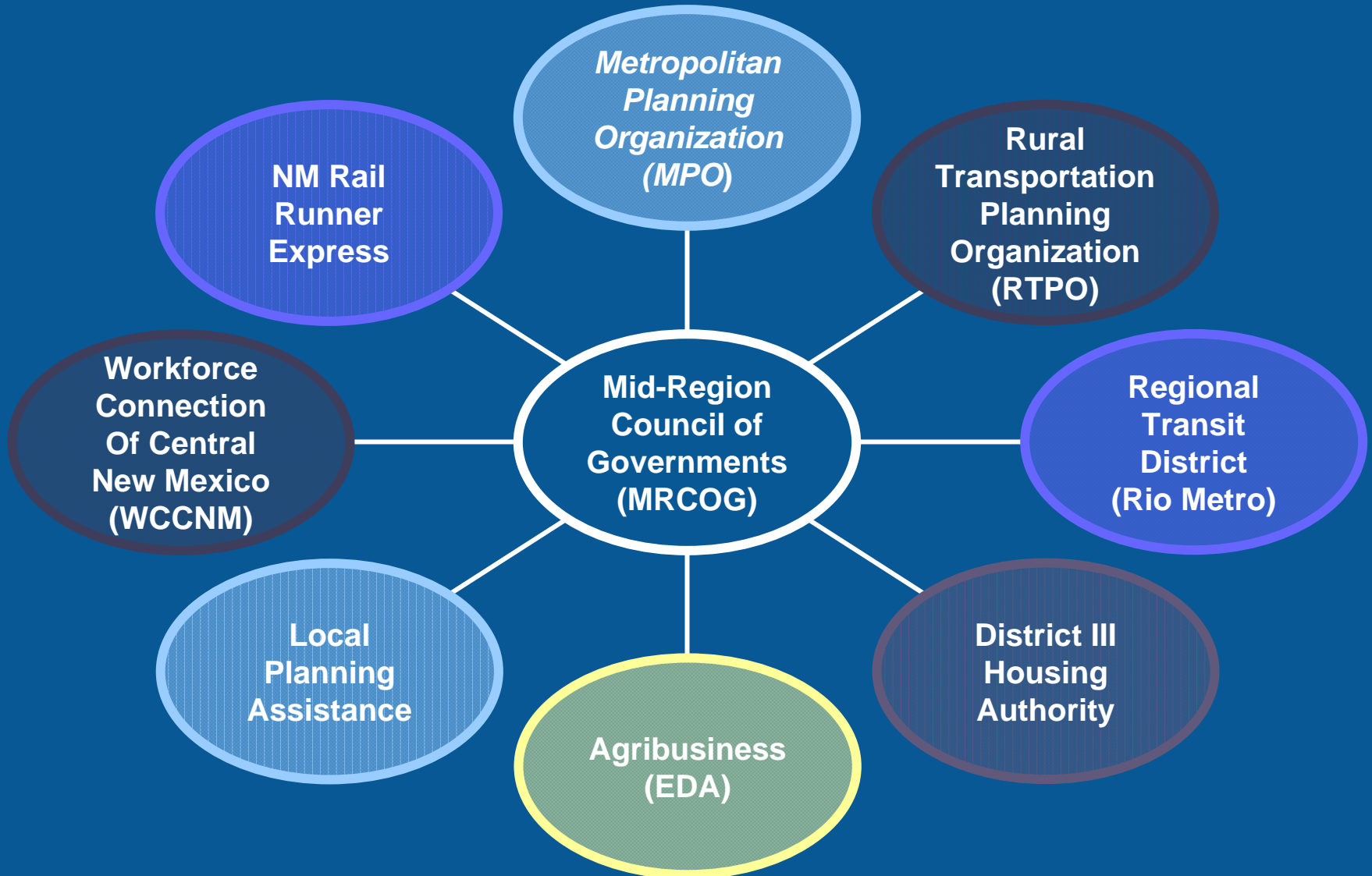


MRCOG Planning Area

- ◆ The MRCOG Boundary coincides with State Planning and Development District #3
- ◆ The Mid-Region MPO Planning Boundary is outlined in **RED**



Mid-Region Council of Governments (MRCOG)



Metropolitan Planning Organizations

- ◆ Responsible for ensuring the “3C” planning process is carried out
- ◆ An MPO is created and defined by ***federal law*** (Title 23 Code of Federal Regulations Section 450)
 - ◆ “The policy board of an organization created and designated to carry out the metropolitan transportation planning process”



Metropolitan Planning Organizations

- ◆ Current federal transportation legislation is called SAFETEA-LU
 - ◆ Authorizes transportation funding 2005-2009
 - ◆ Includes regulations for implementation
- ◆ All MPOs serve their respective Metropolitan Planning Areas as the forum for cooperative transportation decision-making



MPO Decisions

- ◆ Metropolitan Transportation Board (MTB)
 - ◆ Approves transportation plans and programs in the AMPA; establish regional transportation policy
 - ◆ Elected officials, officials of agencies that administer/operate major modes, appropriate State officials
 - ◆ Advisory committees
 - Transportation Coordinating Committee (TCC)
 - Provides technical advice to the MTB
 - Public Involvement Committee (PIC)
 - Provides an interface between MTB and the public

MPO Voting Members

◆ City of Albuquerque (6)	◆ Pueblo of Sandia
◆ Bernalillo County (3)	◆ Village of Tijeras
◆ City of Rio Rancho (2)	◆ Town of Bernalillo
◆ Sandoval County	◆ Albuquerque Public Schools
◆ Village of Los Lunas	◆ Rio Rancho Public Schools
◆ Village of Corrales	◆ NMDOT (2)
◆ Village of Los Ranchos de Albuquerque	◆ Albuquerque Metropolitan Arroyo Flood Control Authority
◆ Southern Sandoval County Flood Control Authority	◆ Middle Rio Grande Conservancy District



Other Participants

- ◆ Federal agencies
 - ◆ Federal Highway Administration (FHWA)
 - ◆ Federal Transit Administration (FTA)
 - ◆ Environmental Protection Agency (EPA)
- ◆ State agencies
 - ◆ NM Environment Department
- ◆ Native American Tribes and Pueblos
- ◆ Stakeholders
- ◆ The Public



The Mid-Region MPO

◆ What does the MRMPO do?

- *Metropolitan Transportation Plan*
- Transportation Improvement Program
- Public Involvement Procedures
- Unified Planning Work Program
- Congestion Management Process
- *Transportation Conformity*
- Certification



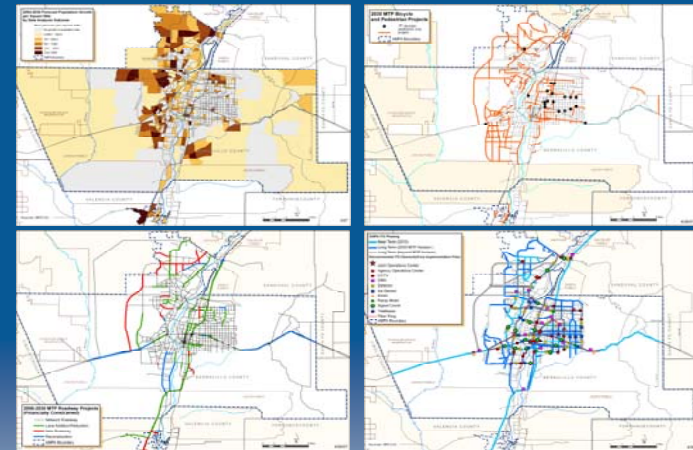
Transportation Issues & Challenges

- ◆ Rapid Population Growth & Land Development Patterns (the “Land Use-Transportation Connection”)
- ◆ Congested Roadways
- ◆ “Crossing the River”
- ◆ Transit service: quality & convenience
- ◆ Bicycle facilities and connectivity
- ◆ Pedestrian access
- ◆ Crashes and safety
- ◆ Air quality (*Climate Change*)
- ◆ Limited transportation funding



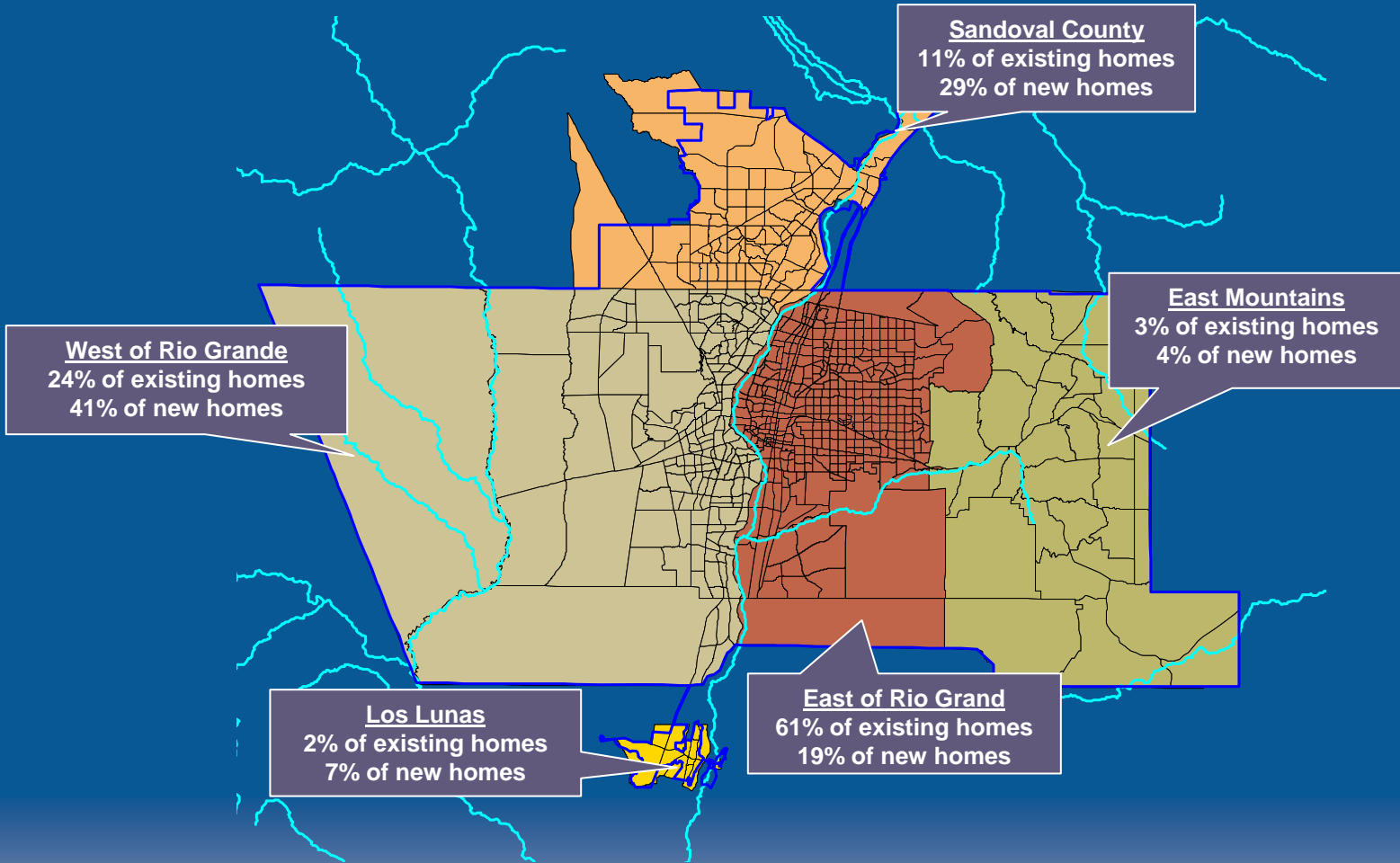
Metropolitan Transportation Plan (MTP)

- ◆ Federal requirements
 - ◆ At least a 20-year planning horizon
 - ◆ Includes:
 - Long- and short-range strategies
 - All modes
 - Congestion Management Process (CMP) strategies
 - Public involvement
 - ◆ Outline past and present transportation trends; project future growth and land use
 - ◆ Forecast travel demand
 - ◆ Financial constraint
 - ◆ Update every 4 years (nonattainment and maintenance areas)
 - ◆ Approved by the MTB



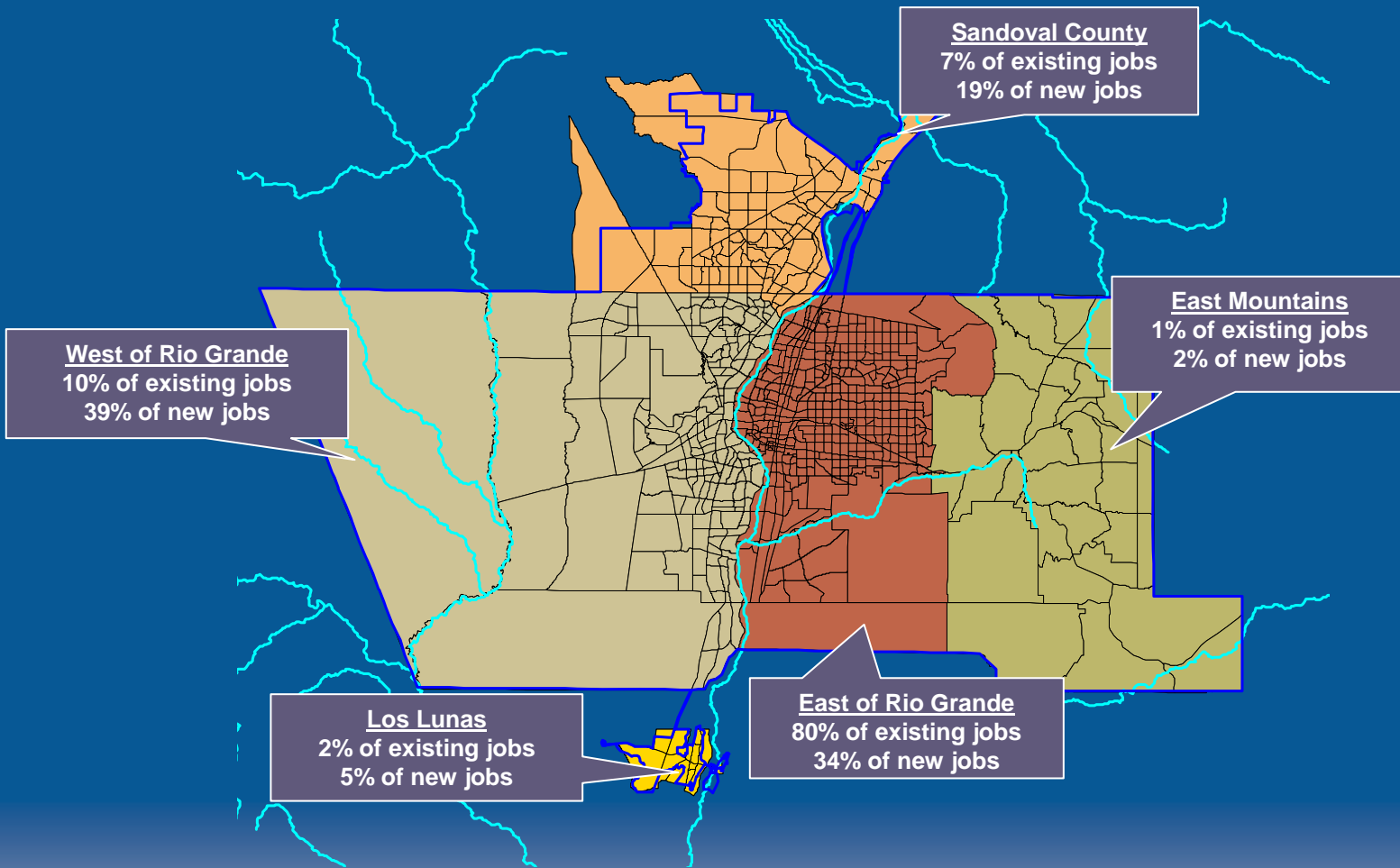
Housing by Subarea

2004 Base Year and 2030 Projected Growth

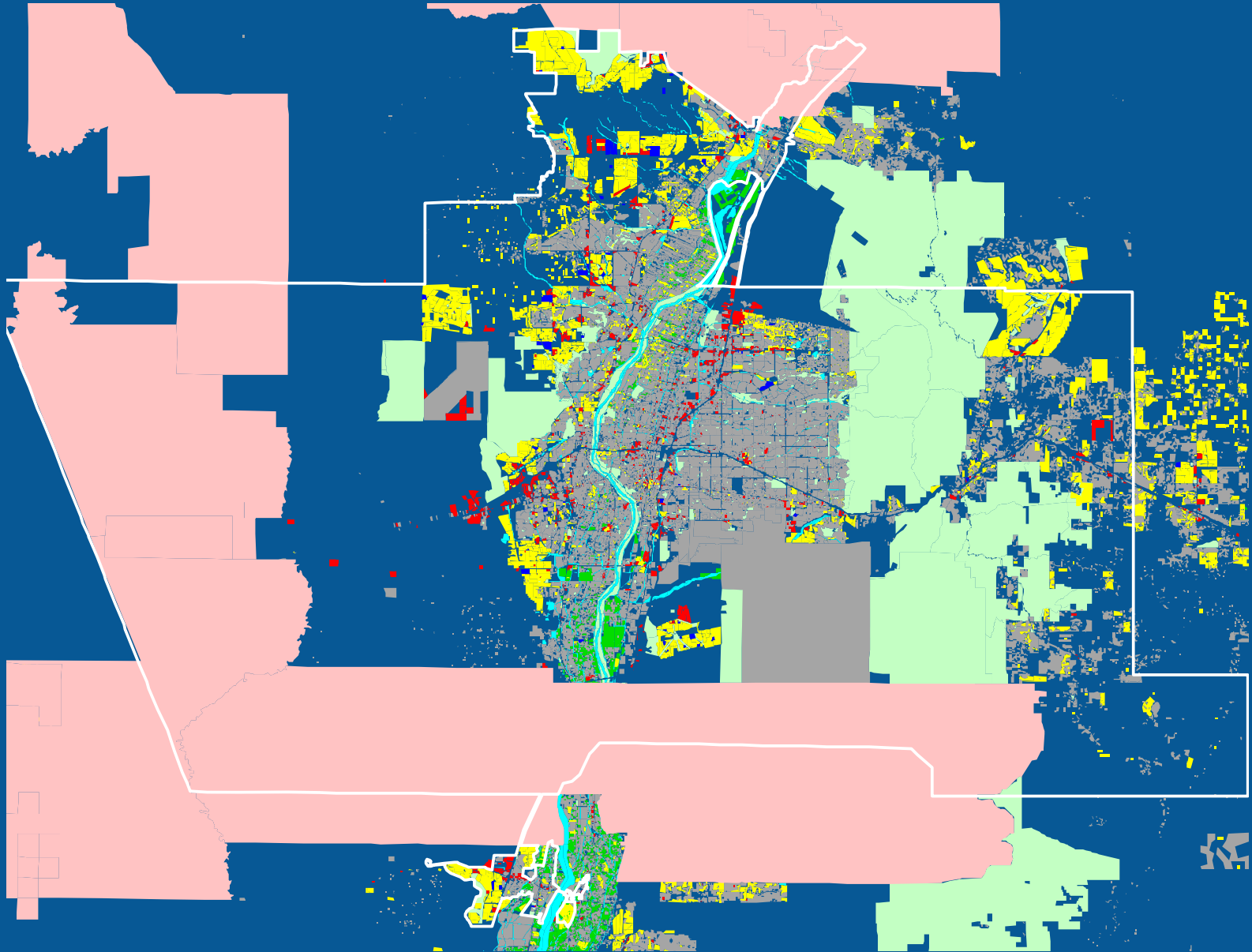


Jobs by Subarea

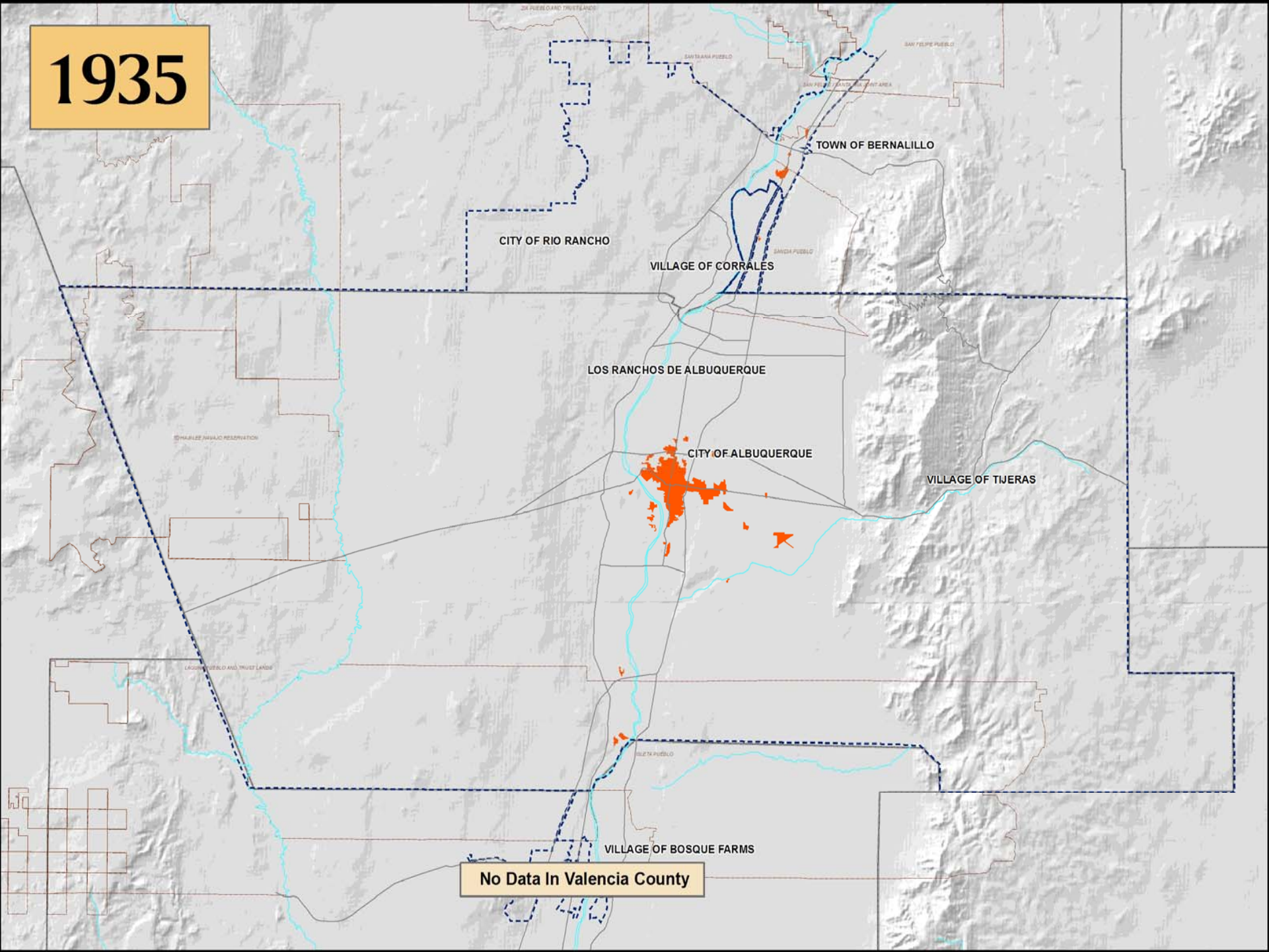
2004 Base Year and 2030 Projected Growth



Picture of Growth to 2030

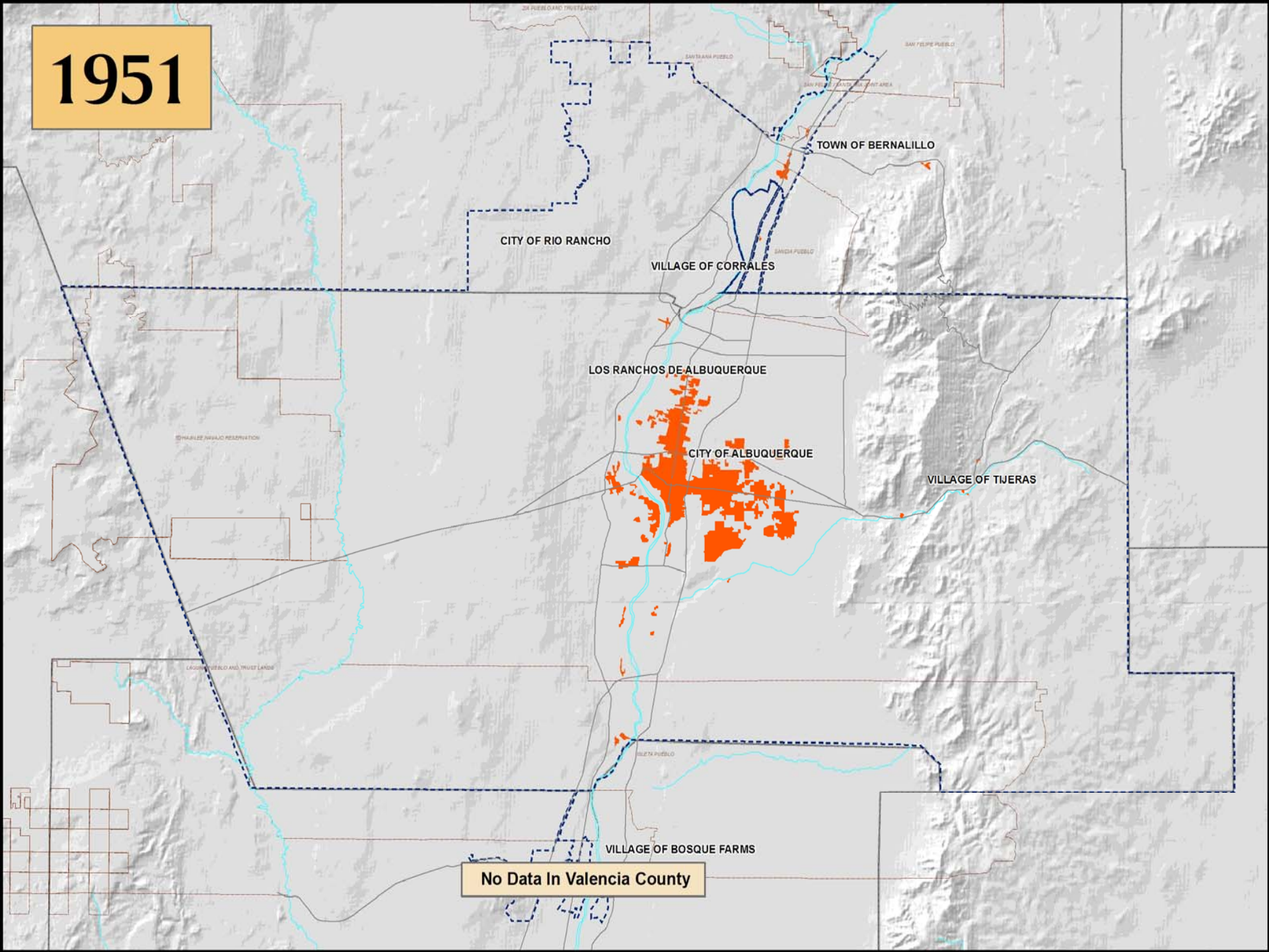


1935

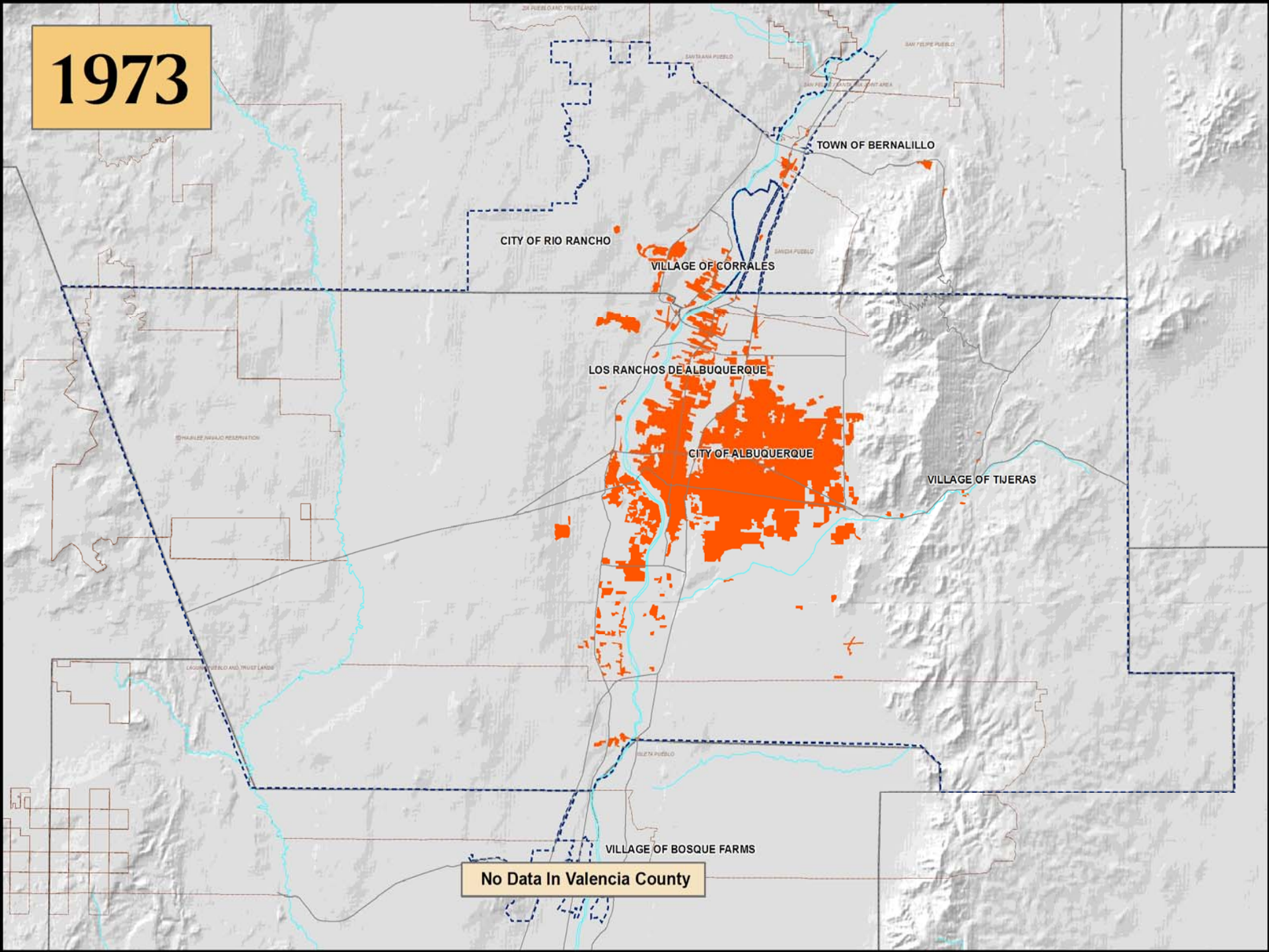


No Data In Valencia County

1951

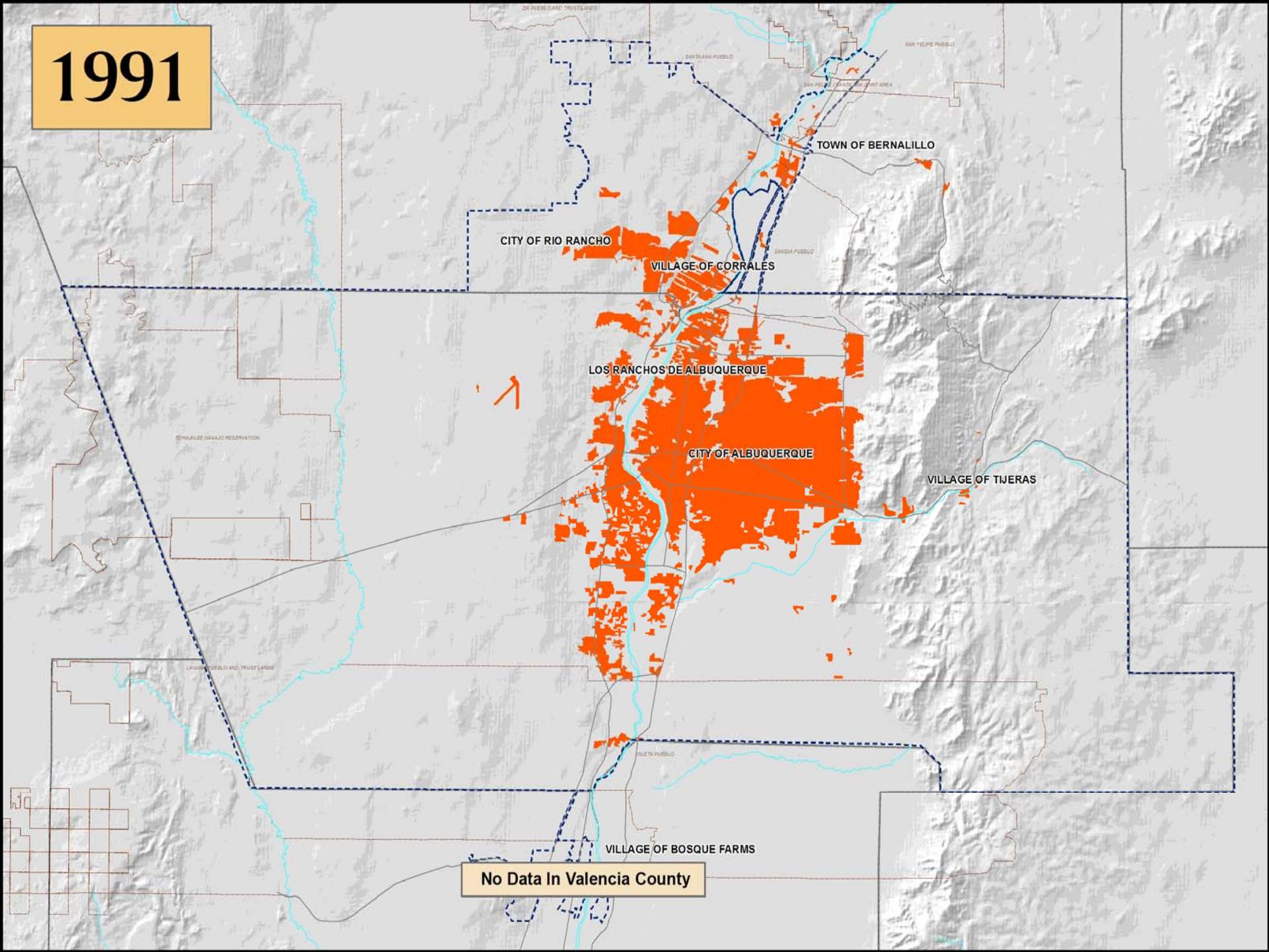


1973



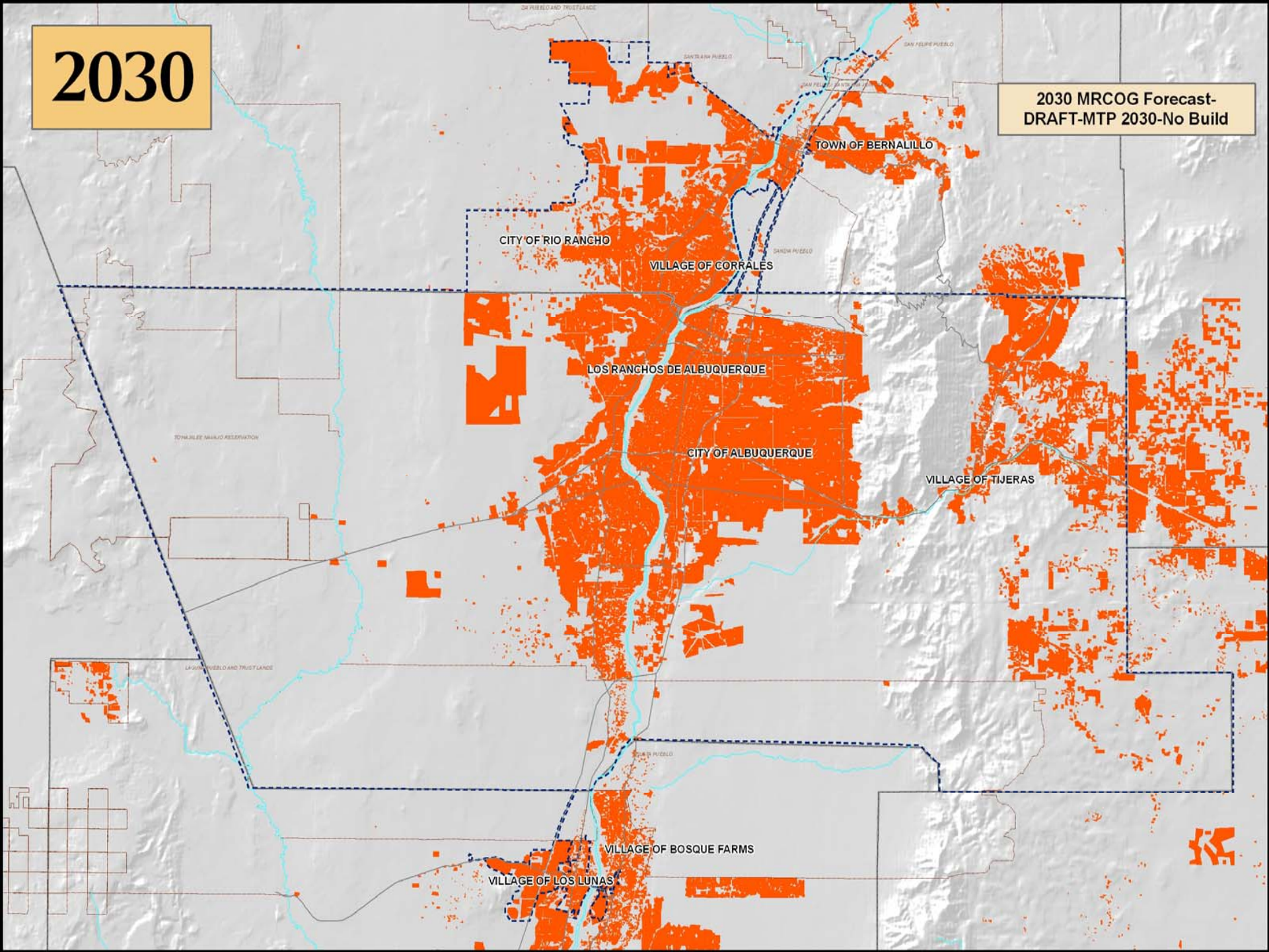
1991

No Data In Valencia County



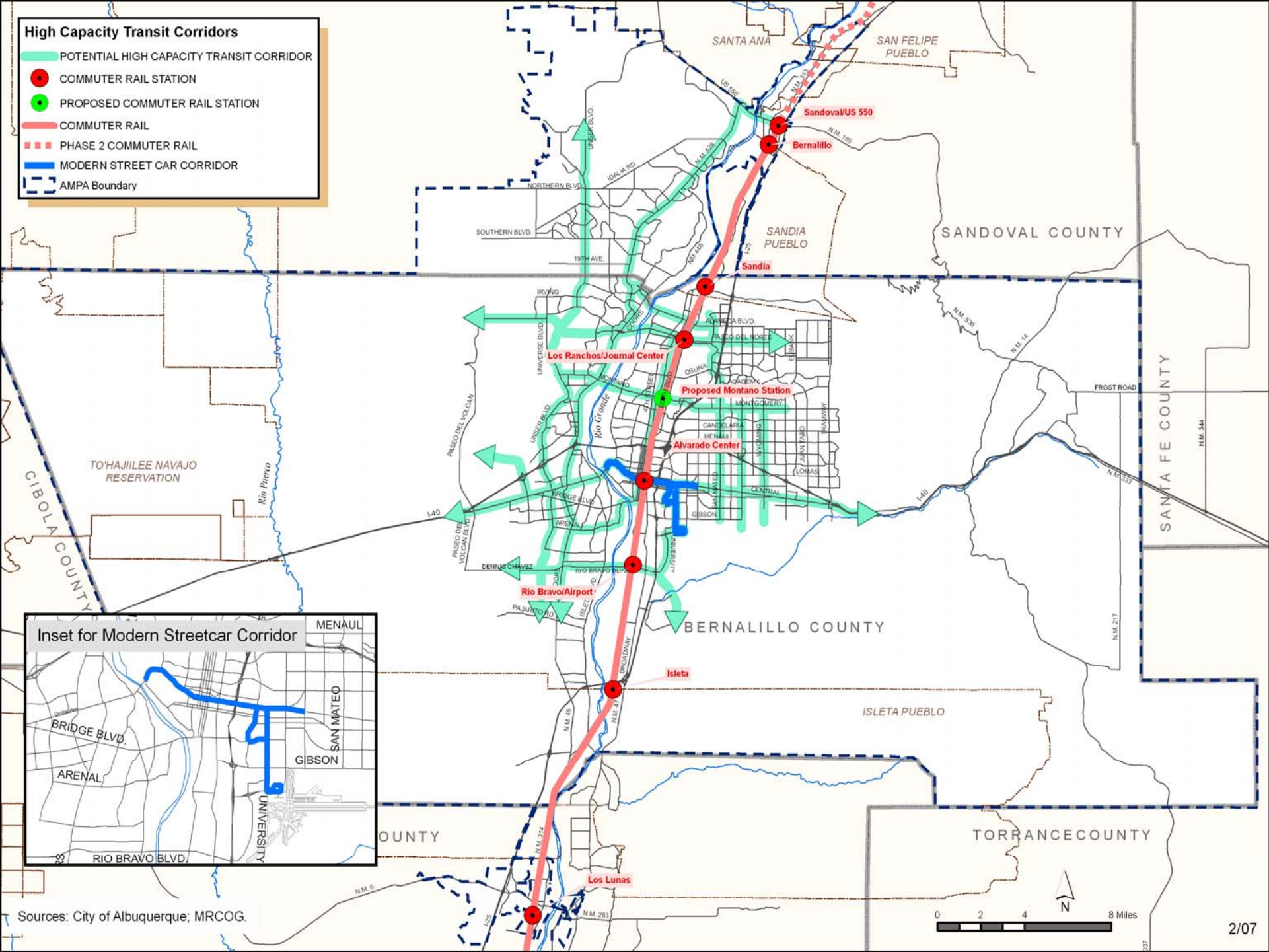
2030

2030 MRCOG Forecast-
DRAFT-MTP 2030-No Build



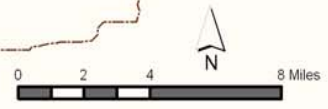
High Capacity Transit Corridors

- POTENTIAL HIGH CAPACITY TRANSIT CORRIDOR
- COMMUTER RAIL STATION
- PROPOSED COMMUTER RAIL STATION
- COMMUTER RAIL
- - - PHASE 2 COMMUTER RAIL
- MODERN STREET CAR CORRIDOR
- - - AMPA Boundary



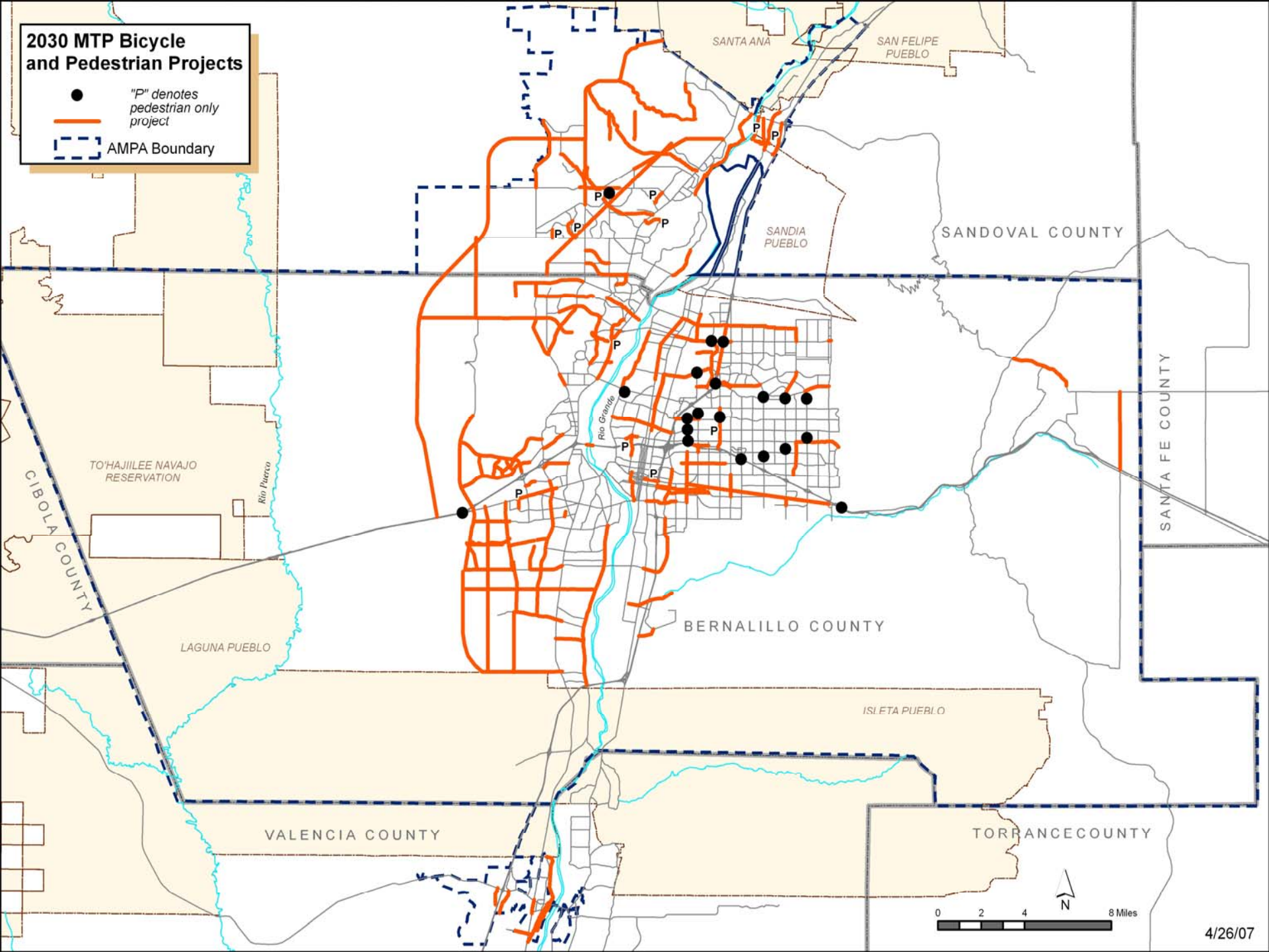
Inset for Modern Streetcar Corridor

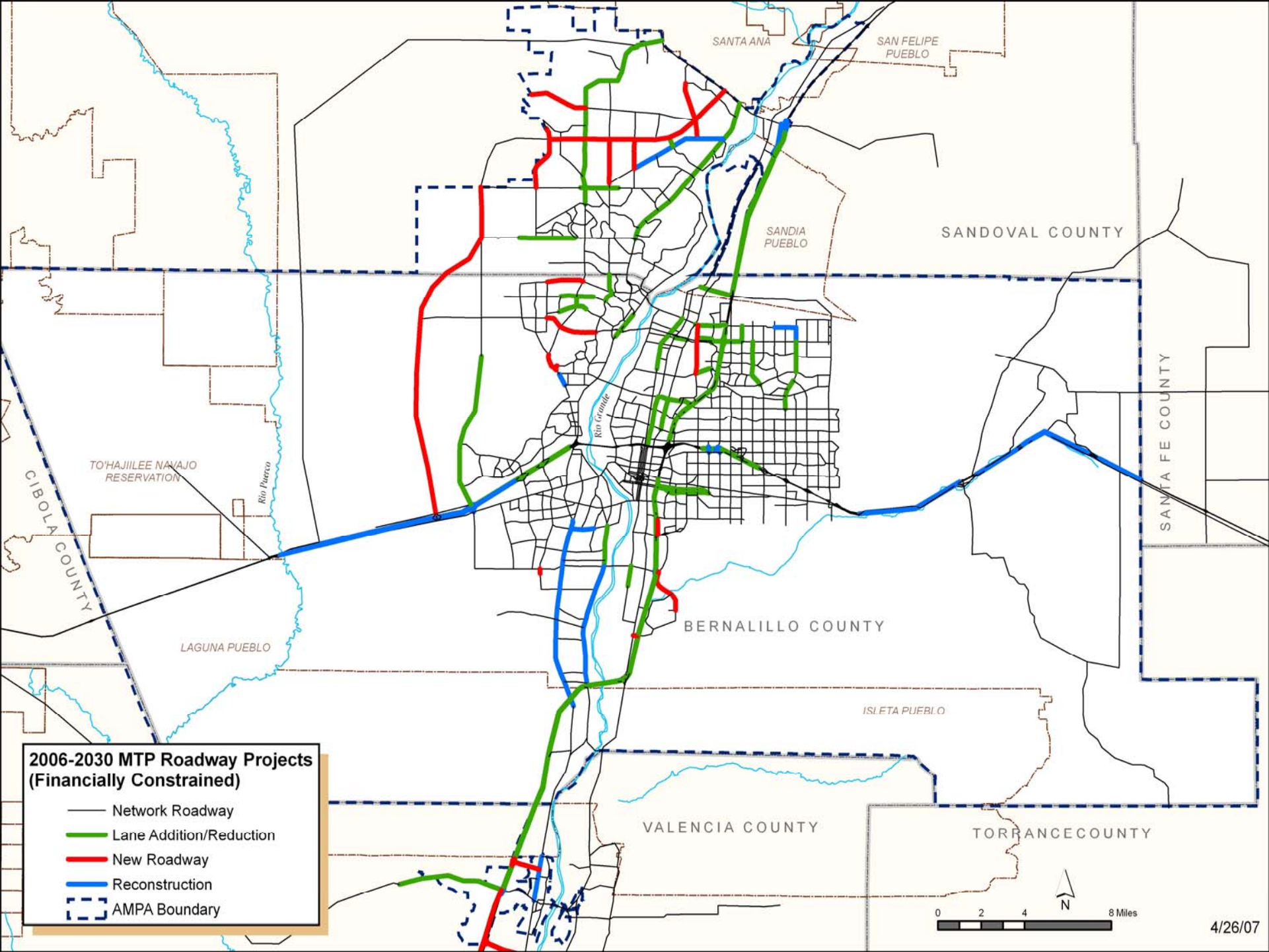
Sources: City of Albuquerque; MRCOG.



2030 MTP Bicycle and Pedestrian Projects

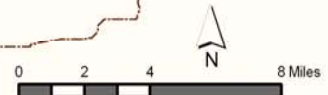
- "P" denotes pedestrian only project
- Pedestrian only project
- - - - - AMPA Boundary





**2006-2030 MTP Roadway Projects
(Financially Constrained)**

- Network Roadway
- Lane Addition/Reduction
- New Roadway
- Reconstruction
- - - AMPA Boundary

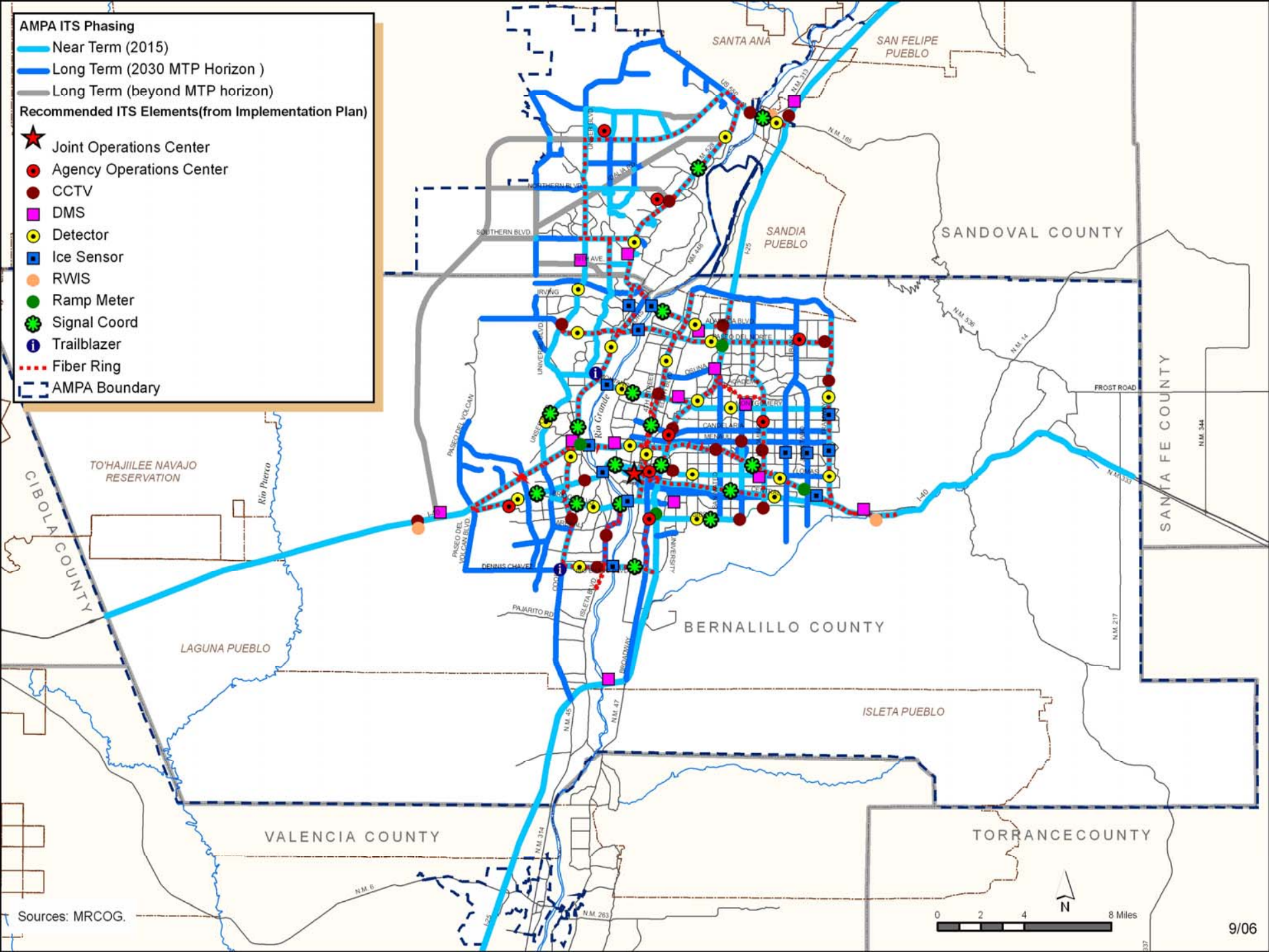


AMPA ITS Phasing

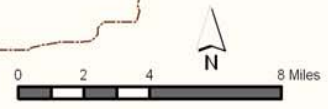
- Near Term (2015)
- Long Term (2030 MTP Horizon)
- Long Term (beyond MTP horizon)

Recommended ITS Elements (from Implementation Plan)

- ★ Joint Operations Center
- Agency Operations Center
- CCTV
- DMS
- Detector
- Ice Sensor
- RWIS
- Ramp Meter
- Signal Coord
- Trailblazer
- Fiber Ring
- - - AMPA Boundary



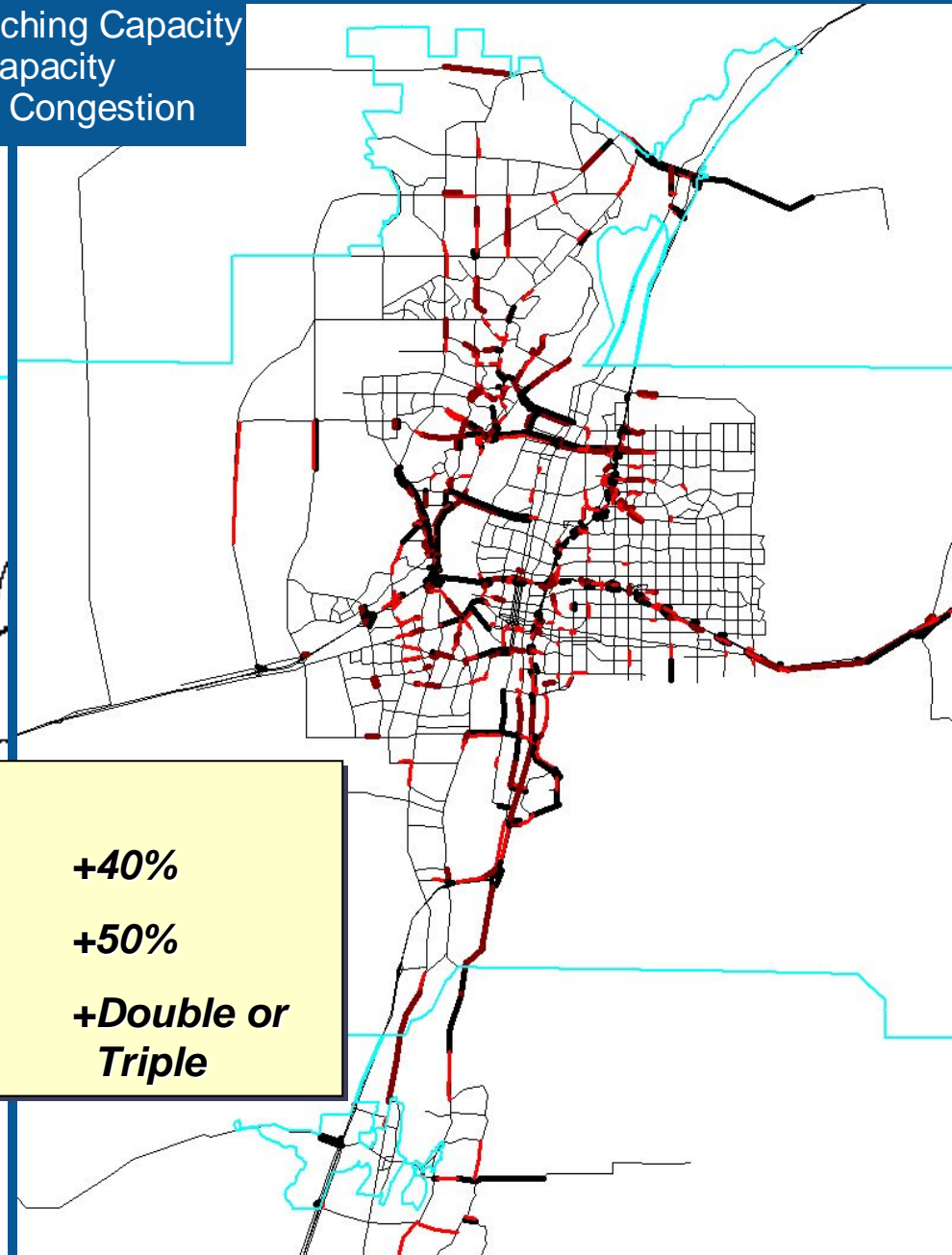
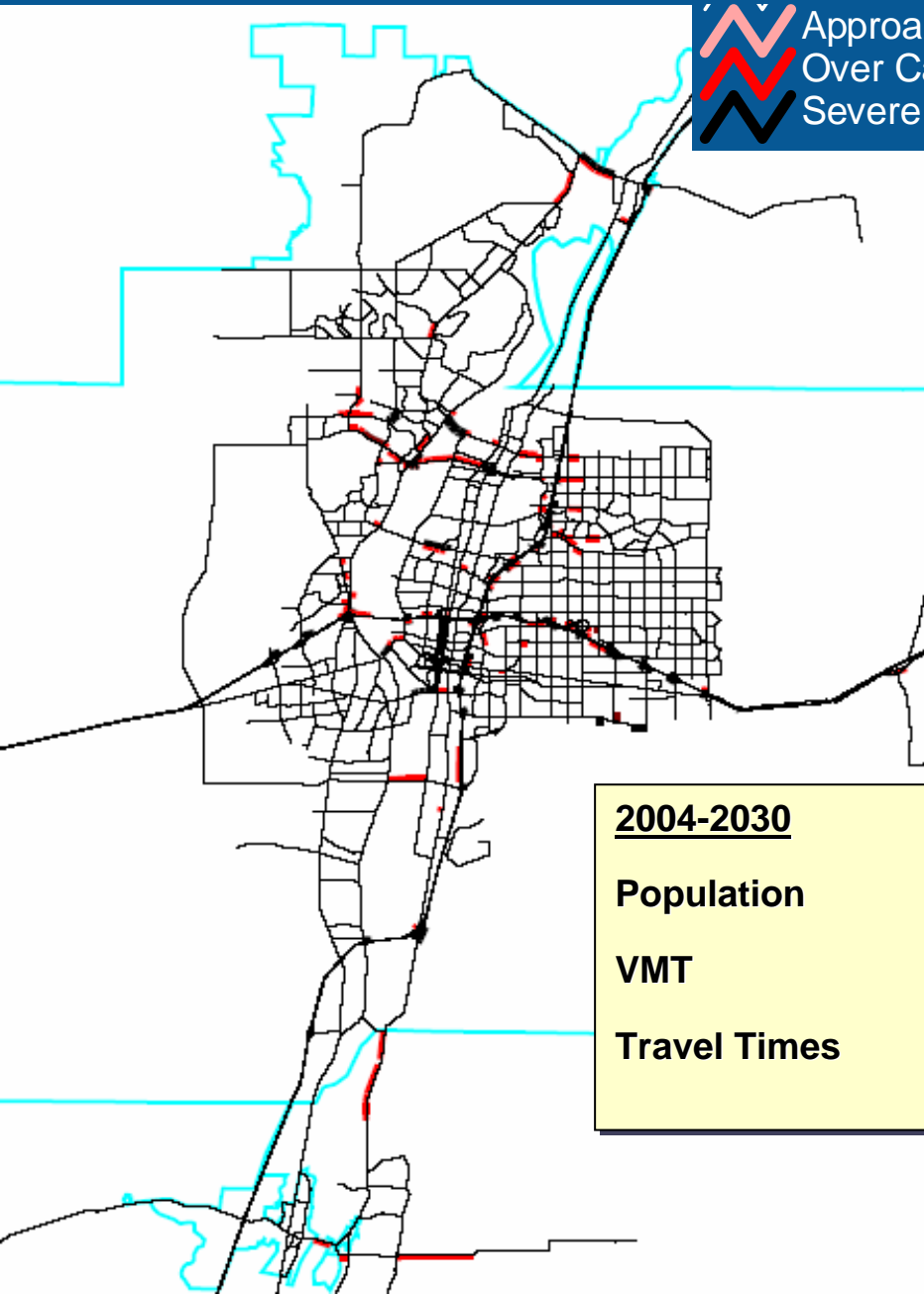
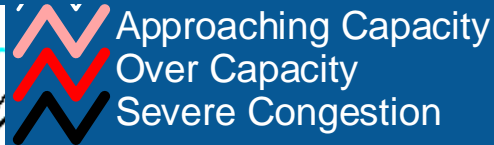
Sources: MRCOG.



2004

PM Peak Hour

2030



<u>2004-2030</u>	
Population	+40%
VMT	+50%
Travel Times	+Double or Triple

Metropolitan Transportation Plan

◆ The 2030 MTP

- ◆ Approved by the MTB April 26, 2007
- ◆ Expenditures
 - Over \$6.0 Billion in public funds through 2030
 - Capital Projects – \$3.5 Billion
 - Operations/Maintenance – \$2.6 Billion
 - Approximately \$700 million in private funds



Transportation Conformity

- ◆ In {air quality} nonattainment or maintenance areas, the MPO shall coordinate the development of the transportation plan with the SIP (State Implementation Plan)...
- ◆ In nonattainment or maintenance areas for transportation related pollutants, the MPO shall not approve any transportation plan or program which does not conform with the SIP, as determined in accordance with the US EPA conformity regulation (40 CFR 51)



Transportation Conformity (continued)

◆ Mid-Region air quality status

- ◆ Prior to 1996 – Moderate nonattainment for Carbon Monoxide (CO)
- ◆ Maintenance area from 1996 through 2005
- ◆ Limited maintenance as of August 22, 2005
 - Must still demonstrate conformity, although not through regional emissions analysis.
 - Must still complete interagency consultation with federal, state, and local partners to ensure continued compliance with NAAQS



Transportation Conformity (continued)

- ◆ 2030 MTP Section XIII – Evaluation of the Transportation System
 - ◆ Transportation Conformity with Carbon Monoxide (CO) Limited Maintenance Plan
 - ◆ Alternative Fuels
 - ◆ Future Potential Air Quality Issues
 - Ozone
 - ***Greenhouse Gas Emissions***
- ◆ EPA Letter confirming monitored data <85% of NAAQS for CO
- ◆ Other conformity requirements:
 - ◆ Financial constraint
 - ◆ Public involvement
 - ◆ Interagency consultation (TCTC)

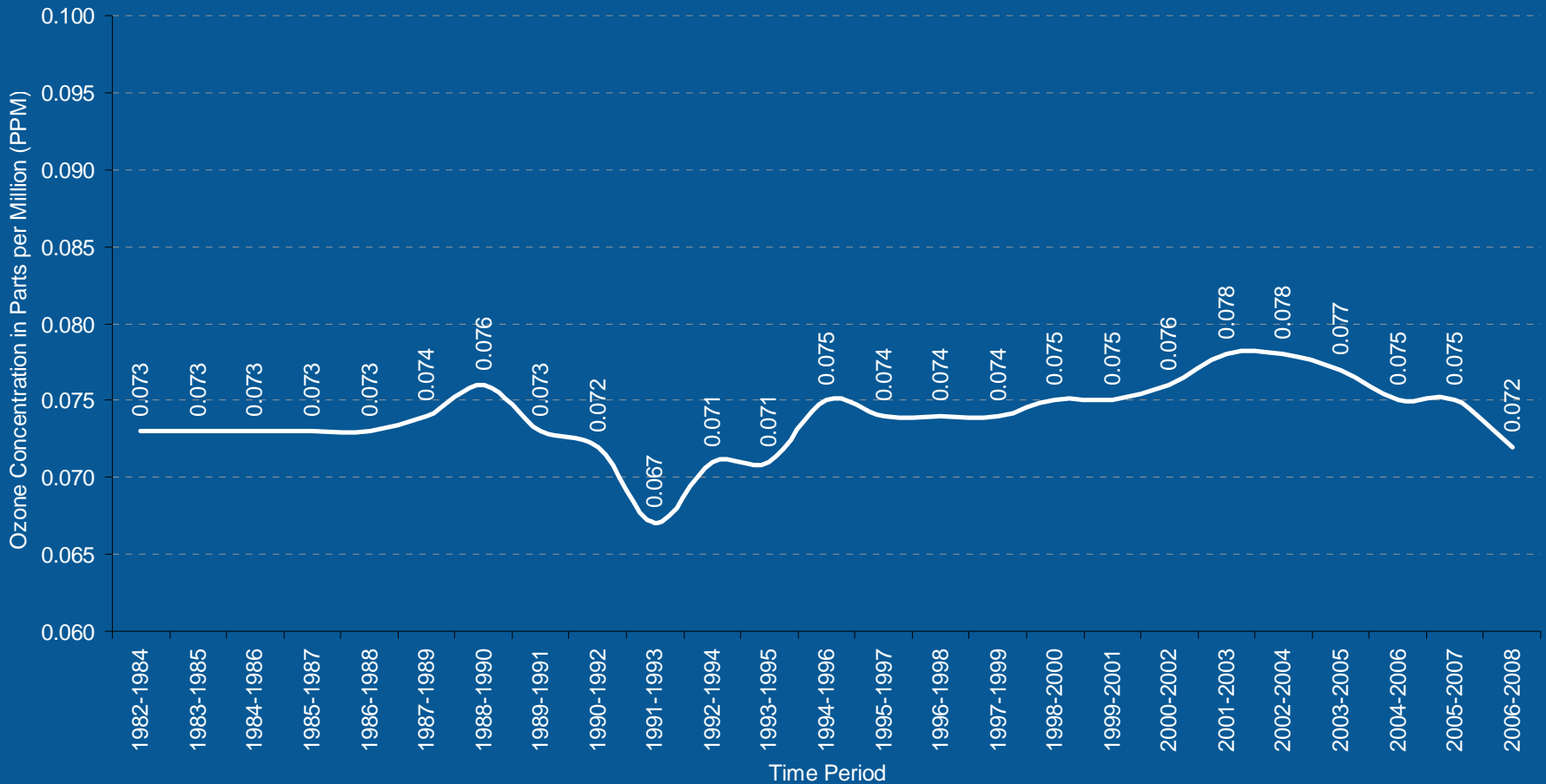
Transportation Conformity (continued)

- ◆ The Transportation Conformity Technical Committee (TCTC) recommended approval of conformity determination
- ◆ MTB approved local conformity determination
- ◆ Federal agencies reviewed and concurred with full conformity determination
 - ◆ FHWA
 - ◆ FTA
 - ◆ EPA
- ◆ Conformity determination made by Federal partners on June 30, 2007 (conformity determination date became MTP effective date)

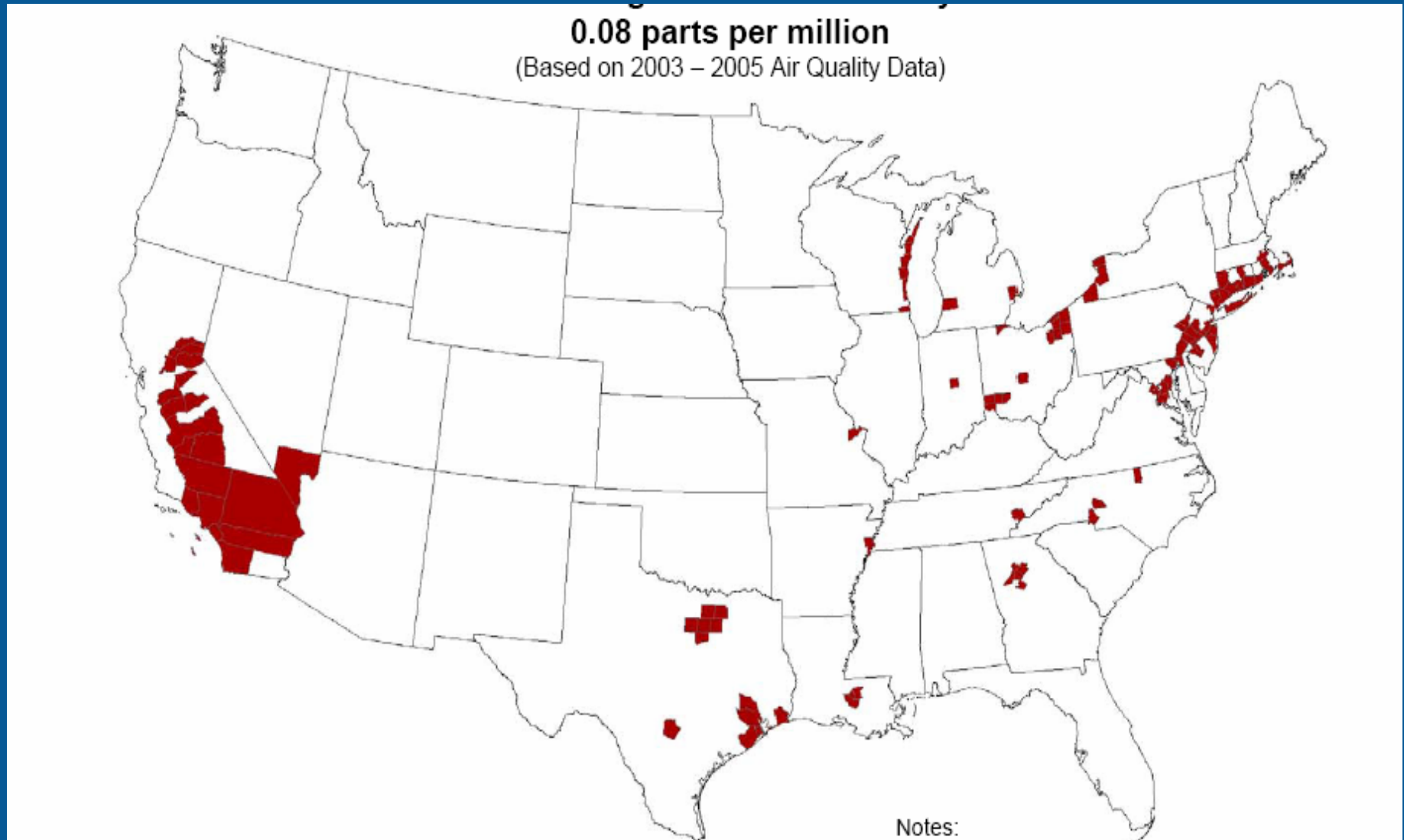


Future Potential Air Quality Issues

27 Years of Ozone
Bernalillo County New Mexico
Network wide 8 Hour Averages, Fourth Maximum Value
1982 to 2008 Three Year Averages, not NAAQS comparable
City of Albuquerque, Environmental Health Department, AQD EPA AQS Data



Counties Violating the Old 8-hour Standard



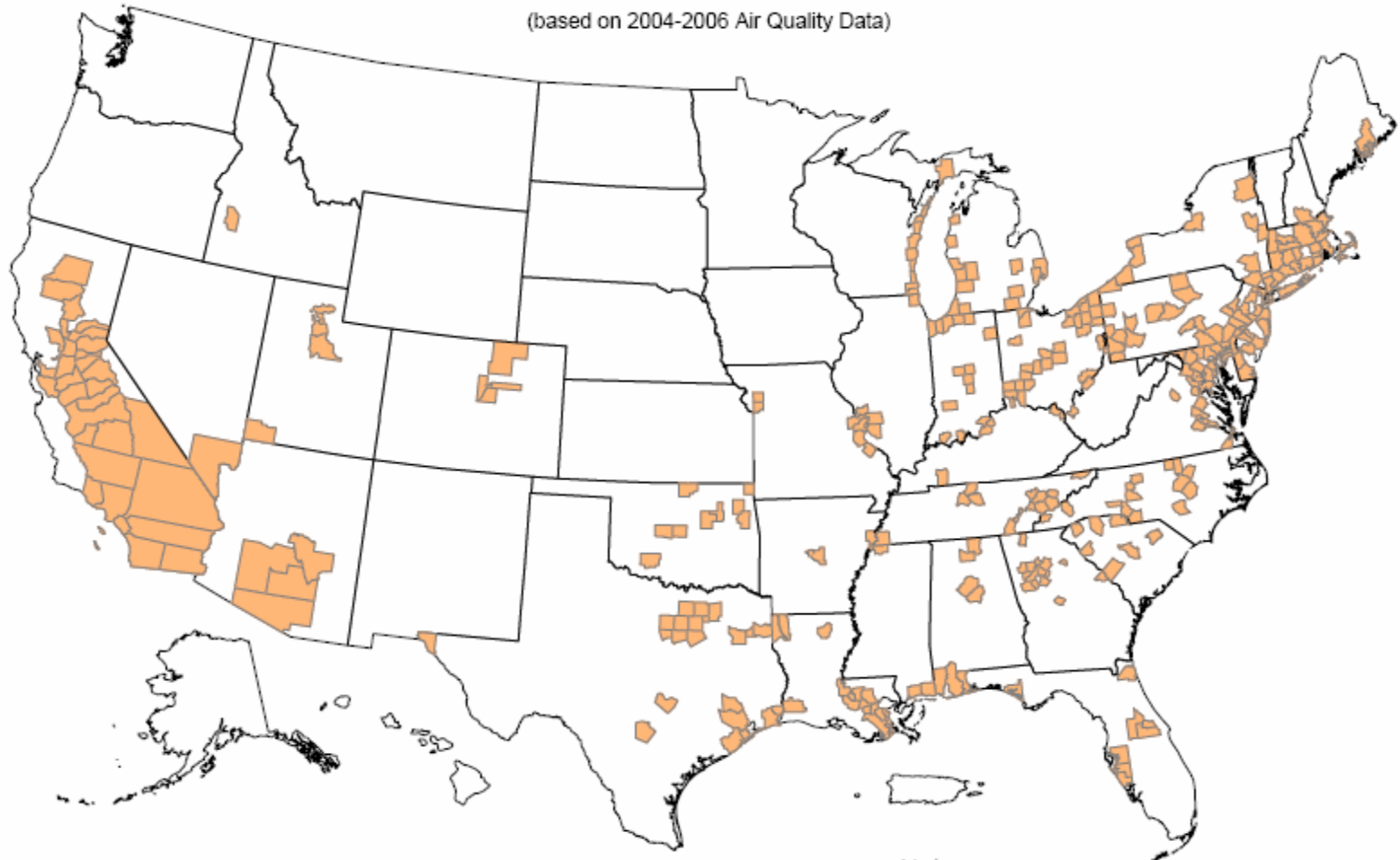
Counties Violating the New 8-hour Standard



Estimates are based on the most recent data (2004 – 2006). EPA will not designate areas as nonattainment on these data, but likely on data from 2006 – 2008 or later, which we expect to show improved air quality.

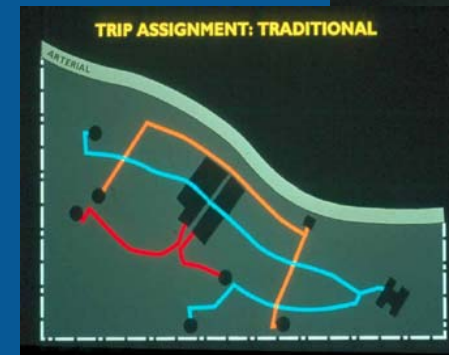
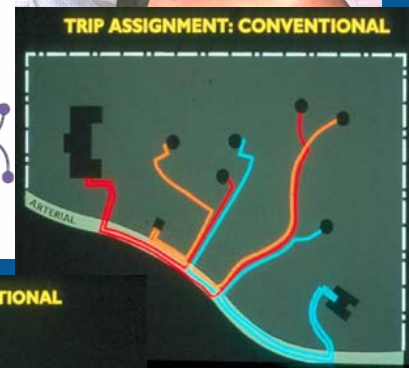
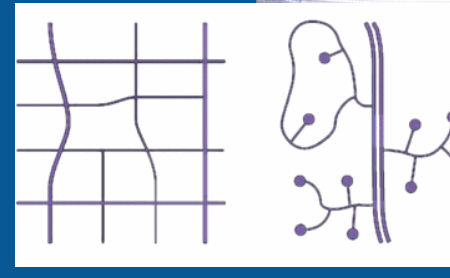
Counties with Monitors Violating the 2008 8-Hour Ozone Standard of 0.075 parts per million (ppm)

(based on 2004-2006 Air Quality Data)



What does this mean for us?

- ◆ High risk for violating standard
- ◆ The debate goes on
- ◆ Never too early to take action
- ◆ Real solutions:
 - ◆ Tighten emissions
 - Engine technology
 - Inspection & Maintenance Programs
 - Reformulated fuel
 - ◆ Connect with high-capacity transit & bikeways
 - ◆ Improve traffic flow
 - Critical bottlenecks
 - ITS
 - Managed lanes
 - ◆ Travel Demand Management (TDM) Programs
 - ◆ Create walk-able, mixed-use neighborhoods, commercial centers
 - ◆ Dense network of connected 2- & 4-lane roadways



What does this mean for us?

- ◆ Effects of Nonattainment Status
 - ◆ More stringent requirements for developing plans and programs
 - ◆ Modeling
 - ◆ Regional emissions analysis
 - ◆ Compliance with “budget”
 - ◆ Less flexibility to modify plans and programs
 - ◆ Less flexibility to take advantage of changes in available funding
 - ◆ Project delays (or accelerations) can cause conformity problems
 - ◆ Constant, significant efforts required to comply with air quality requirements
 - ◆ Uncertainty for project planning and development caused by changing air quality requirements (court rulings, model changes, new regulations)

Questions/Comments

Web – www.mrcog-nm.gov

Jack A. Lord, AICP

Transportation Program Manager

Tel – 724-3632

Email – jlord@mrcog-nm.gov

