

UNM Golf Course

This trail loop is well used and more challenging than other paths.
Start your walk on Stanford.

Trail Distance: 2 mile

Difficulty: Grade 3

Steps: 4225

Trail Surface: wide, dirt, some steep areas that exceed
5% grade

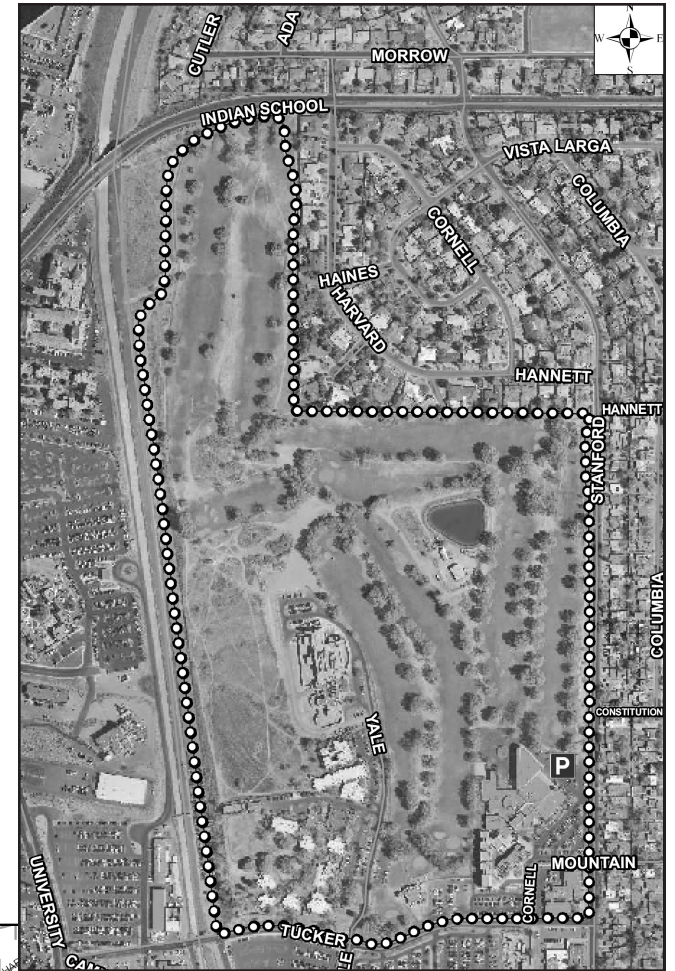
Attractions: golf course, shade trees, views of the Sandias
and west side

**NEARBY
MAJOR
CROSS
STREETS:**
Indian School &
Girard NE

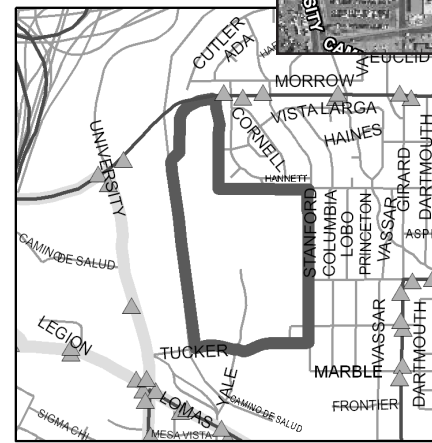
ABQ RIDE:
#5, #6

**PUBLIC
FACILITIES:**
UNM Buildings

PARKING:
on site



- ▲ Bus Stops
- Commuter/Peak Hour
- Local/All-Day



ZIP CODE
UNM Golf Course 87131