

Phil Chacon Park

Start your walk at the sculpture and go south. Go past the soccer field, turn right and return along the park boundary. Additional paths go south to New Mexico Veterans Memorial Park.

Trail Distance: .6 mile

Difficulty: Grade 2

Steps: 1270

Trail Surface: 4-8 foot wide asphalt and packed gravel

Attractions: sports fields, tree lined pathways, Public Art sculpture, good visibility of other park users

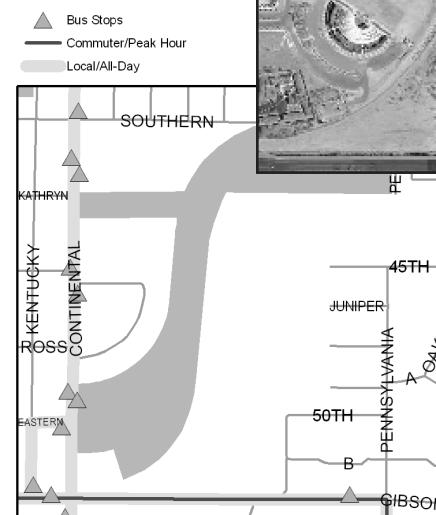
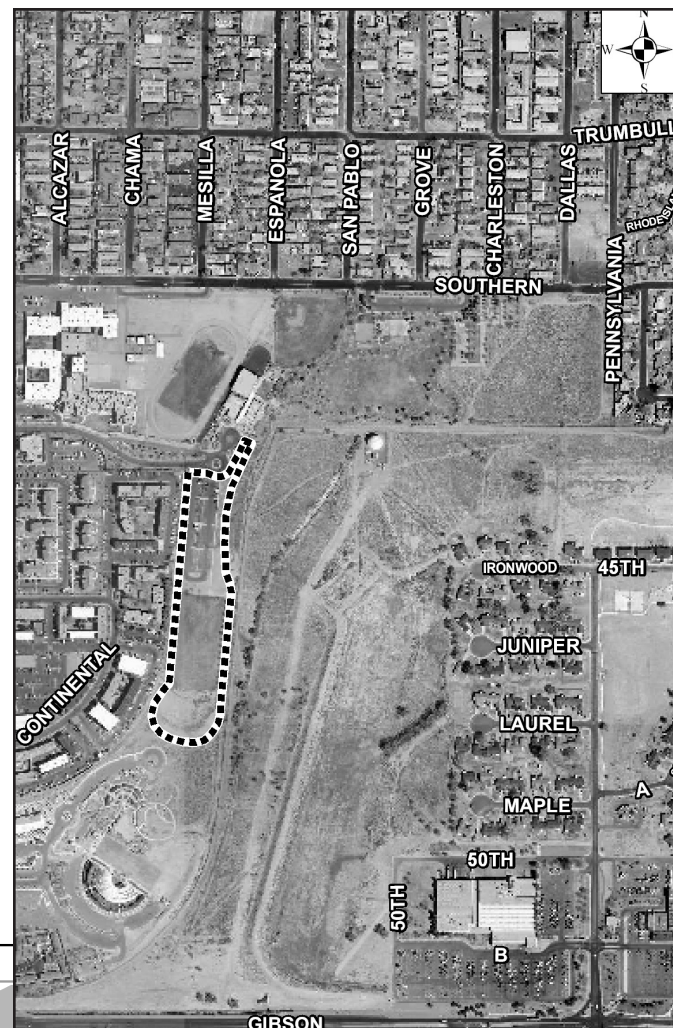


NEARBY MAJOR CROSS STREETS:
Louisiana & Kathryn SE

ABQ RIDE:
#3, #157

PUBLIC FACILITIES:
Cesar Chavez Community Center

PARKING:
Community Center



Other suggested routes in 87108

Zia Elementary School & Park
Gibson Multi-Use Trail



Phil Chacon Park

ZIP CODE 87108