

# Embudo Hills Park

Several choices exist for this loop. A connecting linear path adds distance and challenge. Fitness stations are found along the linear path.

**Trail Distance:** .4 mile

**Difficulty:** Grade 1

**Steps:** 850

**Trail Surface:** 6 foot wide asphalt or concrete

**Attractions:** playground, benches, picnic area, great views of the mountains and foothills

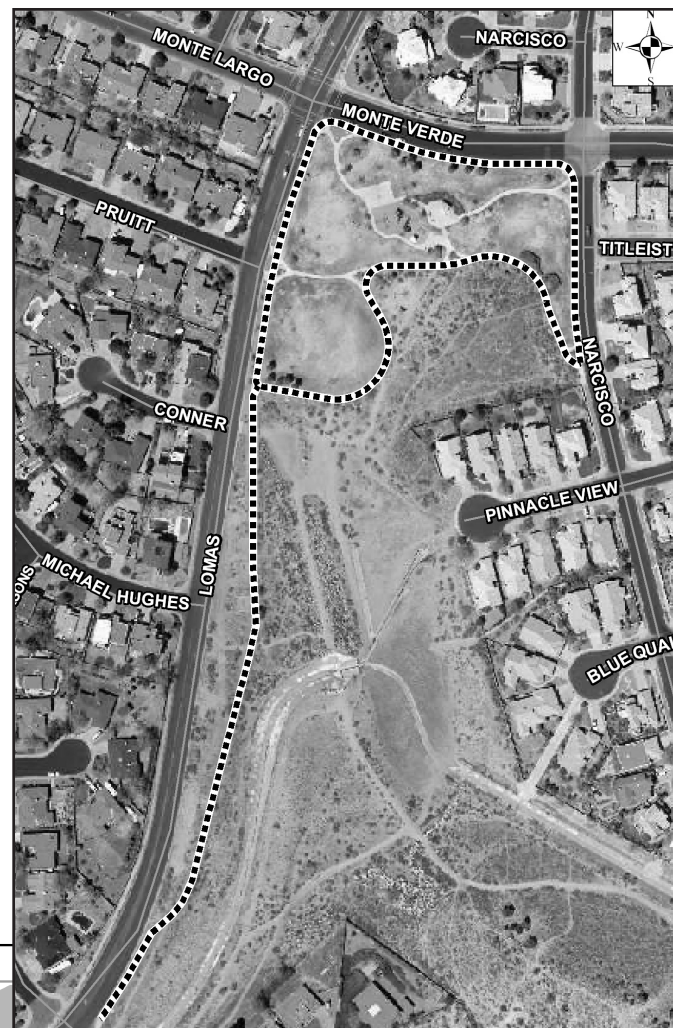


**NEARBY MAJOR CROSS STREETS:**  
Lomas & Monte Largo NE

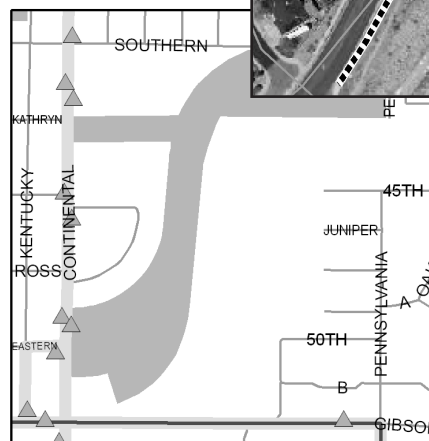
**ABQ RIDE:**  
#11 nearby

**PUBLIC FACILITIES:**  
none

**PARKING:**  
on street



▲ Bus Stops  
— Commuter/Peak Hour  
— Local/All-Day



**Other suggested routes in 87112**

Chelwood Park  
Manzano High School track



**Embudo Hills Park**

**ZIP CODE 87112**