

# Aldo Leopold Trail

Accessed through Rio Grande Nature Center State Park, the trail starts at the Nature Center's west gate. Cross the bridge and climb the hill to your right. At the top of the levee, cross the asphalt bicycle trail that runs parallel to the ditch and turn left to access the trail. Watch out for bicyclists! After hours, the trail can be accessed from the connecting trail at the end of Candelaria.

**Trail Distance:** 1.25 mile

**Difficulty:** Grade 1

**Steps:** 2640

**Trail Surface:** 6-8 foot wide asphalt

**Attractions:** wildlife viewing, river access. No pets thru the Nature Center property.

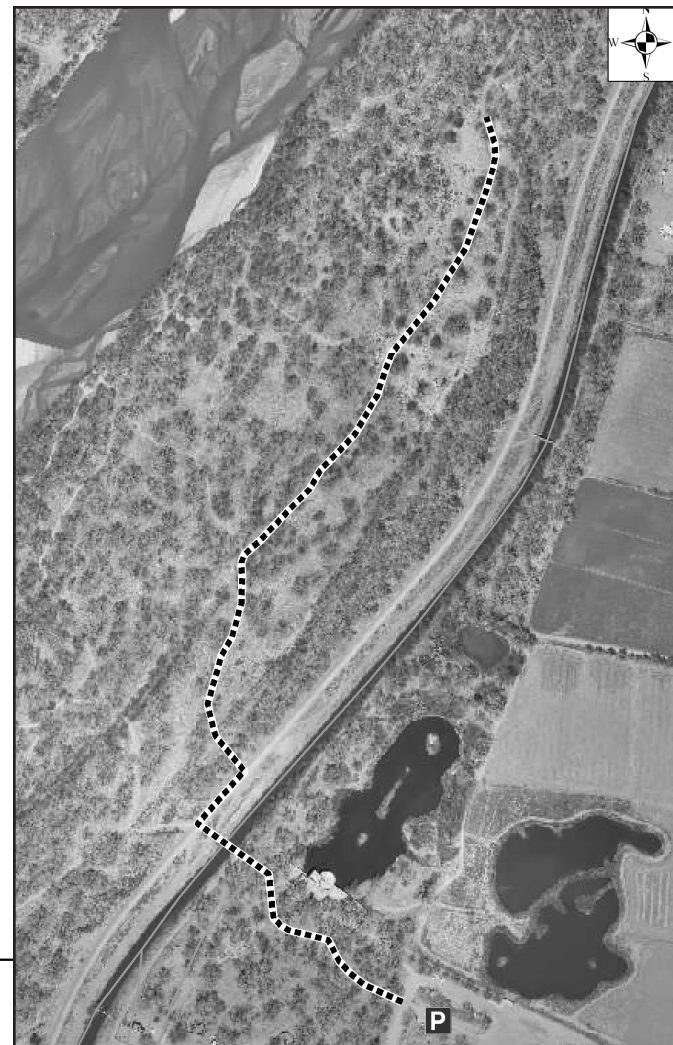
Nature Center parking lot and grounds are open 8-5.

**MAJOR CROSS STREETS:**  
Candelaria & Rio Grande Blvd. NW

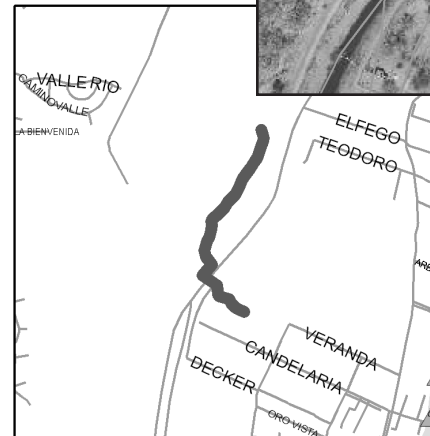
**ABQ RIDE:**  
#36

**PUBLIC FACILITIES:**  
Visitor Center

**PARKING:**  
An entrance fee is required, or bring your 'walking prescription' to the Visitor Center, and NM State Parks will issue a six month free pass.



- ▲ Bus Stops
- Commuter/Peak Hour
- Local/All-Day



Aldo Leopold Trail

ZIP CODE  
**87107**