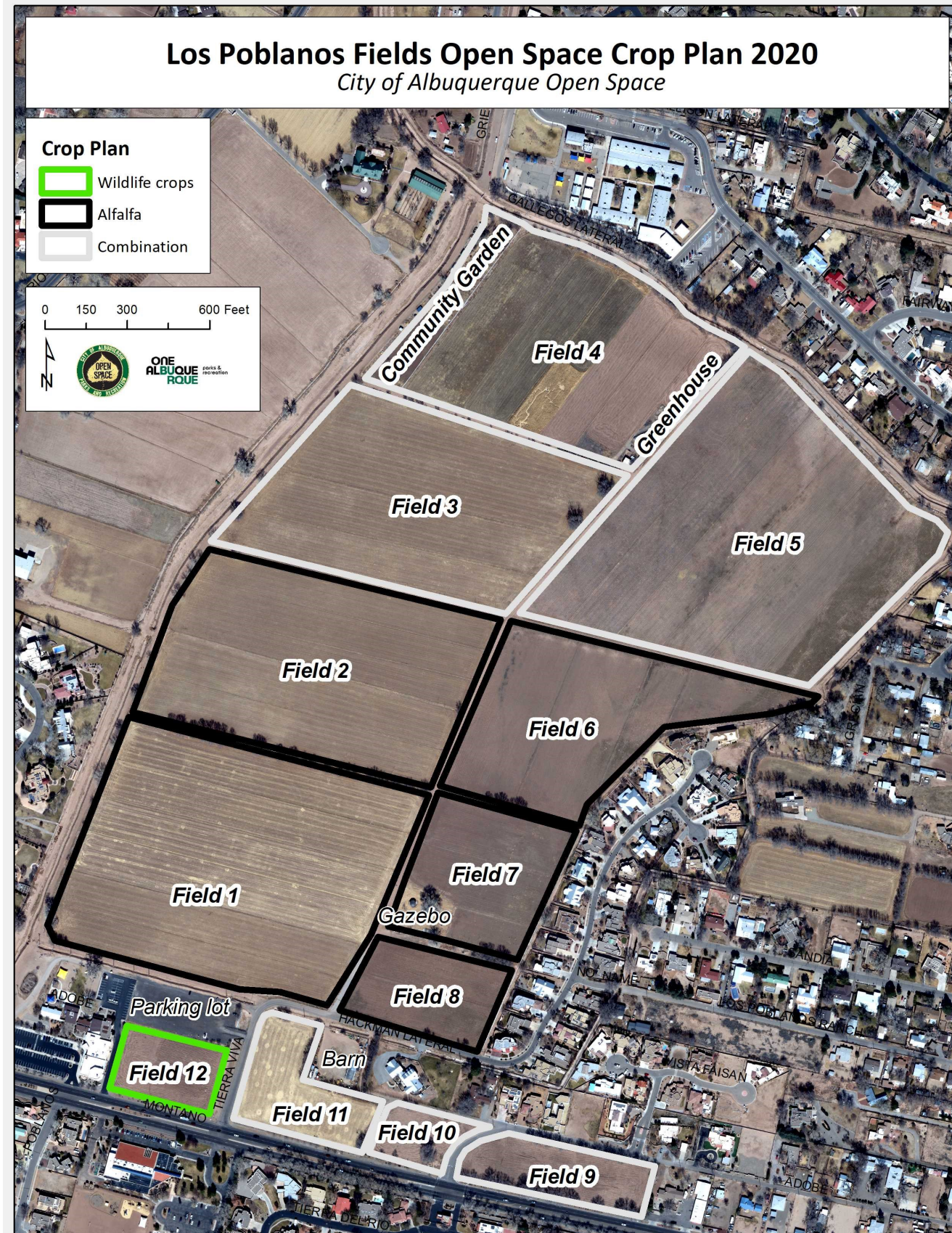




Los Poblanos Fields Open Space



2020 Crop Plan



Notes:

- Fields in green are planted in all wildlife crops. Fields in white are planted in a combination of wildlife crops and alfalfa. Fields in black are planted in alfalfa only.
- This is what farmers anticipate growing; it is tentative based on water availability, unforeseeable seasonal conditions, etc.
- A minimum of 25% of each farmer's total acreage must be dedicated to wildlife crops. In return, they can plant the remaining acreage with for-profit crops approved by the Open Space Division. This enables the farmers to provide food for wildlife and still break even at minimal cost to the City .
- Open Space requires the farmers to periodically cut different sections of wildlife crops to provide migrating wildlife like sandhill cranes with food throughout the winter. Sorghum cuttings remain on the ground, which allows wildlife to feed on the seeds while providing an open area to watch for predators. Other wildlife crops such as sunflowers are left standing for small birds and pollinators. For example, Rasband Dairy cuts approximately 4 acres of wildlife crops every other week; this provides seed until January or early February. This method is typical across all Open Space farms.

RASBAND DAIRY

- Field 1: 24 acres, alfalfa
- Field 2: 16 acres, alfalfa
- Field 3: 17 acres, 8 acres Sorghum, 9 acres alfalfa
- Field 5: 25 acres, 20 acres Sorghum, 5 acres alfalfa
- Field 6: 11 acres, alfalfa
- Field 7: 6 acres (including gazebo), alfalfa
- Field 8: 5 acres, alfalfa

RIO GRANDE COMMUNITY FARM

- Field 4: 16 acres (including greenhouse), community garden, sunflowers (curtailed)

BLUEFLY FARMS

- Field 9: 4 acres, alfalfa, sorghum
- Field 10: 1.5 acres, alfalfa, sorghum
- Field 11: 4 acres, alfalfa, sorghum
- Field 12: 3.5 acres, sunflowers, chile peppers (curtailed)

TOTAL FARMABLE ACREAGE= 128.46