

**Map to Elena Gallegos Reservation Areas
City of Albuquerque - Open Space Division**

For more information, visit:
<http://www.cabq.gov/openspace/reservation.html>



PASEO DEL NORTE

To access the park from I-40, exit on to Tramway north.
After the Academy Road traffic light, turn right onto Simms
Park Road and travel east to the entrance booth.

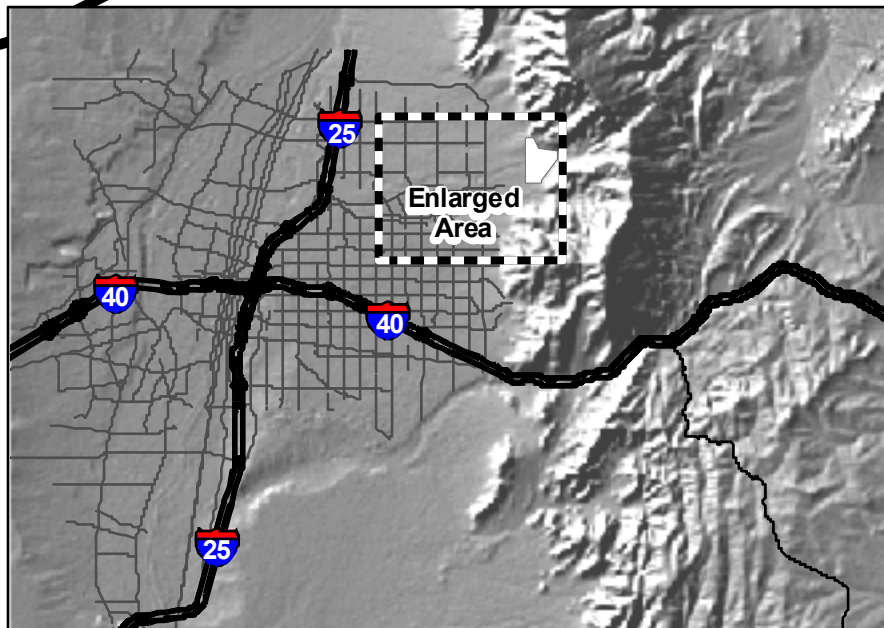
From I-25, take Paseo del Norte east until it ends at Tramway.
Turn right on to Tramway, travel approximately 1.25 miles,
turn left onto Simms Park Road, and travel east to the
entrance booth.

SIMMS PARK RD.

**Elena Gallegos
Picnic Area**

ACADEMY BLVD.

TRAMWAY BLVD.



For Kiwanis Reservation Area:
-Follow the entrance road counter-clockwise
around the booth. Follow the signs and turn
right on the access road. The Kiwanis
parking lot will be on the right side of the road.

For the Double Shelter Reservation Area:
-Follow the one-way loop road to the right of
the entrance booth. Continue around the loop
road until you are heading back toward the
booth, and look for the two picnic tables under
a single roof on the left side of the road.