

June 13, 2016

Mr. Paul Olson  
Principal Engineer  
City of Albuquerque  
Environmental Health Department  
Environmental Services Division – Room 3023  
P. O. Box 1293  
Albuquerque, New Mexico 87103

**Re: Surface Emissions Monitoring at the Former Los Angeles Landfill in Preparation of RV Parking for the Albuquerque International Balloon Fiesta – May 2016**

Mr. Olson,

Attached are the surface emissions monitoring (SEM) results that were recorded on May 2, 2016 at the former Los Angeles Landfill. The SEM monitoring was performed per the request from the City of Albuquerque (COA) to better understand seasonal variations in surface emissions. The SEM was performed by continuously monitoring for landfill gas during a walking transit of the entire landfill. Monitoring was performed using a SiteFID flame ionization detector which detects combustible gasses at parts per million (ppm) levels and was calibrated to 500 ppm methane gas. Landfill gas concentrations were recorded continuously along transects that were spaced approximately 200 feet apart and at suspect features (e.g. surface cracks). Additionally, a walking transect was conducted along all the recreational vehicle (RV) parking areas that have power hookup infrastructure. These transects were done on both sides of the power distribution rows. All readings were performed in the afternoon, which corresponds with the anticipated period when landfill gas emissions have the potential to be at their highest.

The results of the SEM showed that there were no significant detections in landfill gas with exception of detections at expansion cracks located on the southerneastern side of the landfill in a millings-covered area. The cracks had FID readings that maxed out at approximately 5400 ppm. Other anomalous data was collected in the vicinity of the soil vapor extraction building where discharged vapors were detected at ground level.

The results of the SEM event are attached along with a map showing the walking transect path and the approximate locations of the point measurements. The SiteFID was programmed to record a location coordinate and corresponding SEM measurement every five seconds. All of the data are included in the attached matrix, but the corresponding map only shows every 20<sup>th</sup> location ID. The data can be separated into three groups.

1. Point location IDs 1 through 1630 correspond with the walking transect and continuous SEM.
2. Point location IDs 1631 through 1745 correspond with the checking of cracks on the southeast end of the landfill, including direct readings of gas in the cracks, when wide enough.
3. Point location IDs 1746 through 2090 correspond with the walking SEM through the RV parking areas.

During the initial walking SEM of the landfill area, the elevated SEM readings (greater than 5 ppm) associated with the SVE building exhaust were location IDs 607 through 620 and 899 through 929. In both instances the technician slowed the pace of the SEM to ensure that readings were not from the landfill surface, which resulted in a concentrated amount of points in those areas. Elevated readings were also detected at the larger cracks in the asphalt. These readings are not representative of the random SEM transects as the probe was held immediately over, or in, the crack to check for hazardous conditions.

Thank you for the opportunity to perform this work for the COA. If you have any questions, please let me know.

Sincerely,  
**INTERA Incorporated**



Jim Joseph  
Project Manager

Attachments:

May 2016 SEM Data (tabulated)

Figure 1 – Albuquerque International Balloon Fiesta Preparation May 2016 Surface Emission Monitoring (SEM): Path Walked

cc: Mr. Bart Faris, City of Albuquerque Environmental Health Department  
Ken Ziegler, City of Albuquerque Environmental Health Department

**FORMER LOS ANGELES LANDFILL**  
SURFACE EMISSION MONITORING RESULTS FROM MAY 2016  
Monitoring Performed by INTERA Incorporated Using City Equipment

LOCATION ID	DATE AND TIME OF MEASUREMENT	ADJUSTED TOC CONCENTRATION (ppmv)	LOCATION ID	DATE AND TIME OF MEASUREMENT	ADJUSTED TOC CONCENTRATION (ppmv)
1	5/2/2016 13:10	0.2	41	5/2/2016 13:14	0
2	5/2/2016 13:10	0.1	42	5/2/2016 13:14	0
3	5/2/2016 13:11	0.1	43	5/2/2016 13:14	0
4	5/2/2016 13:11	0	44	5/2/2016 13:14	0
5	5/2/2016 13:11	0	45	5/2/2016 13:14	0
6	5/2/2016 13:11	0	46	5/2/2016 13:14	0
7	5/2/2016 13:11	0	47	5/2/2016 13:14	0
8	5/2/2016 13:11	0	48	5/2/2016 13:14	0
9	5/2/2016 13:11	0	49	5/2/2016 13:14	0
10	5/2/2016 13:11	0	50	5/2/2016 13:14	0
11	5/2/2016 13:11	0	51	5/2/2016 13:15	0
12	5/2/2016 13:11	0	52	5/2/2016 13:15	0
13	5/2/2016 13:11	0	53	5/2/2016 13:15	0
14	5/2/2016 13:11	0	54	5/2/2016 13:15	0
15	5/2/2016 13:12	0	55	5/2/2016 13:15	0
16	5/2/2016 13:12	0	56	5/2/2016 13:15	0
17	5/2/2016 13:12	0	57	5/2/2016 13:15	0
18	5/2/2016 13:12	0	58	5/2/2016 13:15	0
19	5/2/2016 13:12	0	59	5/2/2016 13:15	0
20	5/2/2016 13:12	0	60	5/2/2016 13:15	0
21	5/2/2016 13:12	0	61	5/2/2016 13:15	0
22	5/2/2016 13:12	0	62	5/2/2016 13:15	0
23	5/2/2016 13:12	0	63	5/2/2016 13:16	0
24	5/2/2016 13:12	0	64	5/2/2016 13:16	0
25	5/2/2016 13:12	0	65	5/2/2016 13:16	0
26	5/2/2016 13:12	0	66	5/2/2016 13:16	0
27	5/2/2016 13:13	0	67	5/2/2016 13:16	0
28	5/2/2016 13:13	0	68	5/2/2016 13:16	0
29	5/2/2016 13:13	0	69	5/2/2016 13:16	0
30	5/2/2016 13:13	0	70	5/2/2016 13:16	0
31	5/2/2016 13:13	0	71	5/2/2016 13:16	0
32	5/2/2016 13:13	0	72	5/2/2016 13:16	0
33	5/2/2016 13:13	0	73	5/2/2016 13:16	0
34	5/2/2016 13:13	0	74	5/2/2016 13:16	0
35	5/2/2016 13:13	0	75	5/2/2016 13:17	0
36	5/2/2016 13:13	0	76	5/2/2016 13:17	0
37	5/2/2016 13:13	0	77	5/2/2016 13:17	0
38	5/2/2016 13:13	0	78	5/2/2016 13:17	0
39	5/2/2016 13:14	0	79	5/2/2016 13:17	0

LOCATION ID	DATE AND TIME OF MEASUREMENT	ADJUSTED TOC CONCENTRATION (ppmv)
40	5/2/2016 13:14	0
81	5/2/2016 13:17	0
82	5/2/2016 13:17	0
83	5/2/2016 13:17	0
84	5/2/2016 13:17	0
85	5/2/2016 13:17	0
86	5/2/2016 13:17	0
87	5/2/2016 13:18	0
88	5/2/2016 13:18	0
89	5/2/2016 13:18	0
90	5/2/2016 13:18	0
91	5/2/2016 13:18	0
92	5/2/2016 13:18	0
93	5/2/2016 13:18	0
94	5/2/2016 13:18	0
95	5/2/2016 13:18	0
96	5/2/2016 13:18	0
97	5/2/2016 13:18	0
98	5/2/2016 13:18	0
99	5/2/2016 13:19	0
100	5/2/2016 13:19	0
101	5/2/2016 13:19	0
102	5/2/2016 13:19	0
103	5/2/2016 13:19	0
104	5/2/2016 13:19	0
105	5/2/2016 13:19	0
106	5/2/2016 13:19	0
107	5/2/2016 13:19	0
108	5/2/2016 13:19	0
109	5/2/2016 13:19	0
110	5/2/2016 13:19	0
111	5/2/2016 13:20	0
112	5/2/2016 13:20	0
113	5/2/2016 13:20	0
114	5/2/2016 13:20	0
115	5/2/2016 13:20	0
116	5/2/2016 13:20	0
117	5/2/2016 13:20	0
118	5/2/2016 13:20	0
119	5/2/2016 13:20	0
120	5/2/2016 13:20	0
121	5/2/2016 13:20	0
122	5/2/2016 13:21	0

LOCATION ID	DATE AND TIME OF MEASUREMENT	ADJUSTED TOC CONCENTRATION (ppmv)
80	5/2/2016 13:17	0
125	5/2/2016 13:21	0
126	5/2/2016 13:21	0
127	5/2/2016 13:21	0
128	5/2/2016 13:21	0
129	5/2/2016 13:21	0
130	5/2/2016 13:21	0
131	5/2/2016 13:21	0
132	5/2/2016 13:21	0
133	5/2/2016 13:21	0
134	5/2/2016 13:22	0
135	5/2/2016 13:22	0
136	5/2/2016 13:22	0
137	5/2/2016 13:22	0
138	5/2/2016 13:22	0
139	5/2/2016 13:22	0
140	5/2/2016 13:22	0
141	5/2/2016 13:22	0
142	5/2/2016 13:22	0
143	5/2/2016 13:22	0
144	5/2/2016 13:22	0
145	5/2/2016 13:22	0
146	5/2/2016 13:23	0
147	5/2/2016 13:23	0
148	5/2/2016 13:23	0
149	5/2/2016 13:23	0
150	5/2/2016 13:23	0
151	5/2/2016 13:23	0
152	5/2/2016 13:23	0
153	5/2/2016 13:23	0
154	5/2/2016 13:23	0
155	5/2/2016 13:23	0
156	5/2/2016 13:23	0
157	5/2/2016 13:23	0
158	5/2/2016 13:24	0
159	5/2/2016 13:24	0
160	5/2/2016 13:24	0
161	5/2/2016 13:24	0
162	5/2/2016 13:24	0
163	5/2/2016 13:24	0
164	5/2/2016 13:24	0
165	5/2/2016 13:24	0
166	5/2/2016 13:24	0

LOCATION ID	DATE AND TIME OF MEASUREMENT	ADJUSTED TOC CONCENTRATION (ppmv)
123	5/2/2016 13:21	0
124	5/2/2016 13:21	0
169	5/2/2016 13:24	0
170	5/2/2016 13:25	0
171	5/2/2016 13:25	0
172	5/2/2016 13:25	0
173	5/2/2016 13:25	0
174	5/2/2016 13:25	0
175	5/2/2016 13:25	0
176	5/2/2016 13:25	0
177	5/2/2016 13:25	0
178	5/2/2016 13:25	0
179	5/2/2016 13:25	0
180	5/2/2016 13:25	0
181	5/2/2016 13:25	0
182	5/2/2016 13:26	0
183	5/2/2016 13:26	0
184	5/2/2016 13:26	0
185	5/2/2016 13:26	0
186	5/2/2016 13:26	0
187	5/2/2016 13:26	0
188	5/2/2016 13:26	0
189	5/2/2016 13:26	0
190	5/2/2016 13:26	0
191	5/2/2016 13:26	0
192	5/2/2016 13:26	0
193	5/2/2016 13:26	0
194	5/2/2016 13:27	0
195	5/2/2016 13:27	0
196	5/2/2016 13:27	0
197	5/2/2016 13:27	0
198	5/2/2016 13:27	0
199	5/2/2016 13:27	0.3
200	5/2/2016 13:27	0.4
201	5/2/2016 13:27	0.3
202	5/2/2016 13:27	0.3
203	5/2/2016 13:27	0.3
204	5/2/2016 13:27	0.2
205	5/2/2016 13:27	0
206	5/2/2016 13:28	0
207	5/2/2016 13:28	0
208	5/2/2016 13:28	0
209	5/2/2016 13:28	0

LOCATION ID	DATE AND TIME OF MEASUREMENT	ADJUSTED TOC CONCENTRATION (ppmv)
167	5/2/2016 13:24	0
168	5/2/2016 13:24	0
213	5/2/2016 13:28	0.2
214	5/2/2016 13:28	0.5
215	5/2/2016 13:28	0.2
216	5/2/2016 13:28	0
217	5/2/2016 13:28	0
218	5/2/2016 13:29	0
219	5/2/2016 13:29	0
220	5/2/2016 13:29	0
221	5/2/2016 13:29	0
222	5/2/2016 13:29	0
223	5/2/2016 13:29	0
224	5/2/2016 13:29	0
225	5/2/2016 13:29	0
226	5/2/2016 13:29	0
227	5/2/2016 13:29	0
228	5/2/2016 13:29	0
229	5/2/2016 13:29	0
230	5/2/2016 13:30	0
231	5/2/2016 13:30	0
232	5/2/2016 13:30	0
233	5/2/2016 13:30	0
234	5/2/2016 13:30	0
235	5/2/2016 13:30	0
236	5/2/2016 13:30	0
237	5/2/2016 13:30	0
238	5/2/2016 13:30	0
239	5/2/2016 13:30	0
240	5/2/2016 13:30	0
241	5/2/2016 13:30	0
242	5/2/2016 13:31	0
243	5/2/2016 13:31	0
244	5/2/2016 13:31	0
245	5/2/2016 13:31	0
246	5/2/2016 13:31	0
247	5/2/2016 13:31	0
248	5/2/2016 13:31	0
249	5/2/2016 13:31	0
250	5/2/2016 13:31	0
251	5/2/2016 13:31	0
252	5/2/2016 13:31	0
253	5/2/2016 13:32	0

LOCATION ID	DATE AND TIME OF MEASUREMENT	ADJUSTED TOC CONCENTRATION (ppmv)
210	5/2/2016 13:28	0
211	5/2/2016 13:28	0
212	5/2/2016 13:28	0
257	5/2/2016 13:32	0
258	5/2/2016 13:32	0
259	5/2/2016 13:32	0
260	5/2/2016 13:32	0
261	5/2/2016 13:32	0
262	5/2/2016 13:32	0
263	5/2/2016 13:32	0
264	5/2/2016 13:32	0
265	5/2/2016 13:33	0
266	5/2/2016 13:33	0
267	5/2/2016 13:33	0
268	5/2/2016 13:33	0
269	5/2/2016 13:33	0
270	5/2/2016 13:33	0.5
271	5/2/2016 13:33	1.4
272	5/2/2016 13:33	0.8
273	5/2/2016 13:33	0.1
274	5/2/2016 13:33	0
275	5/2/2016 13:33	0
276	5/2/2016 13:33	0
277	5/2/2016 13:34	0
278	5/2/2016 13:34	0
279	5/2/2016 13:34	0
280	5/2/2016 13:34	0
281	5/2/2016 13:34	0
282	5/2/2016 13:34	0
283	5/2/2016 13:34	0
284	5/2/2016 13:34	0
285	5/2/2016 13:34	0
286	5/2/2016 13:34	0
287	5/2/2016 13:34	0
288	5/2/2016 13:34	0
289	5/2/2016 13:35	0
290	5/2/2016 13:35	0
291	5/2/2016 13:35	0
292	5/2/2016 13:35	0
293	5/2/2016 13:35	0
294	5/2/2016 13:35	0
295	5/2/2016 13:35	0
296	5/2/2016 13:35	0

LOCATION ID	DATE AND TIME OF MEASUREMENT	ADJUSTED TOC CONCENTRATION (ppmv)
254	5/2/2016 13:32	0
255	5/2/2016 13:32	0
256	5/2/2016 13:32	0
301	5/2/2016 13:36	0
302	5/2/2016 13:36	0
303	5/2/2016 13:36	0
304	5/2/2016 13:36	0
305	5/2/2016 13:36	0
306	5/2/2016 13:36	0
307	5/2/2016 13:36	0
308	5/2/2016 13:36	0
309	5/2/2016 13:36	0
310	5/2/2016 13:36	0
311	5/2/2016 13:36	0.1
312	5/2/2016 13:36	0
313	5/2/2016 13:37	0
314	5/2/2016 13:37	0
315	5/2/2016 13:37	0.1
316	5/2/2016 13:37	0.1
317	5/2/2016 13:37	0.1
318	5/2/2016 13:37	0.1
319	5/2/2016 13:37	0.1
320	5/2/2016 13:37	0.2
321	5/2/2016 13:37	0.1
322	5/2/2016 13:37	0.1
323	5/2/2016 13:37	0.1
324	5/2/2016 13:37	0.1
325	5/2/2016 13:38	0.1
326	5/2/2016 13:38	0.1
327	5/2/2016 13:38	0.1
328	5/2/2016 13:38	0.1
329	5/2/2016 13:38	0.1
330	5/2/2016 13:38	0.1
331	5/2/2016 13:38	0.1
332	5/2/2016 13:38	0.1
333	5/2/2016 13:38	0.1
334	5/2/2016 13:38	0.1
335	5/2/2016 13:38	0.1
336	5/2/2016 13:38	0.1
337	5/2/2016 13:39	0.1
338	5/2/2016 13:39	0.1
339	5/2/2016 13:39	0.1
340	5/2/2016 13:39	0.1

LOCATION ID	DATE AND TIME OF MEASUREMENT	ADJUSTED TOC CONCENTRATION (ppmv)
297	5/2/2016 13:35	0
298	5/2/2016 13:35	0
299	5/2/2016 13:35	0
300	5/2/2016 13:35	0
345	5/2/2016 13:39	0.1
346	5/2/2016 13:39	0.1
347	5/2/2016 13:39	0.1
348	5/2/2016 13:39	0.2
349	5/2/2016 13:40	0.1
350	5/2/2016 13:40	0.1
351	5/2/2016 13:40	0.2
352	5/2/2016 13:40	0.1
353	5/2/2016 13:40	0.2
354	5/2/2016 13:40	0.1
355	5/2/2016 13:40	0.1
356	5/2/2016 13:40	0.2
357	5/2/2016 13:40	0.2
358	5/2/2016 13:40	0.1
359	5/2/2016 13:40	0.2
360	5/2/2016 13:40	0.2
361	5/2/2016 13:41	0.2
362	5/2/2016 13:41	0.1
363	5/2/2016 13:41	0.1
364	5/2/2016 13:41	0.1
365	5/2/2016 13:41	0.2
366	5/2/2016 13:41	0.2
367	5/2/2016 13:41	0.2
368	5/2/2016 13:41	0.2
369	5/2/2016 13:41	0.2
370	5/2/2016 13:41	0.2
371	5/2/2016 13:41	0.2
372	5/2/2016 13:41	0.1
373	5/2/2016 13:42	0.1
374	5/2/2016 13:42	0.1
375	5/2/2016 13:42	0.2
376	5/2/2016 13:42	0.2
377	5/2/2016 13:42	0.2
378	5/2/2016 13:42	0.2
379	5/2/2016 13:42	0.2
380	5/2/2016 13:42	0.2
381	5/2/2016 13:42	0.2
382	5/2/2016 13:42	0.2
383	5/2/2016 13:42	0.2

LOCATION ID	DATE AND TIME OF MEASUREMENT	ADJUSTED TOC CONCENTRATION (ppmv)
341	5/2/2016 13:39	0.1
342	5/2/2016 13:39	0.1
343	5/2/2016 13:39	0.1
344	5/2/2016 13:39	0.1
389	5/2/2016 13:43	0.2
390	5/2/2016 13:43	0.2
391	5/2/2016 13:43	0.2
392	5/2/2016 13:43	0.2
393	5/2/2016 13:43	0.2
394	5/2/2016 13:43	0.2
395	5/2/2016 13:43	0.2
396	5/2/2016 13:44	0.2
397	5/2/2016 13:44	0.2
398	5/2/2016 13:44	0.2
399	5/2/2016 13:44	0.2
400	5/2/2016 13:44	0.2
401	5/2/2016 13:44	0.2
402	5/2/2016 13:44	0.2
403	5/2/2016 13:44	0.2
404	5/2/2016 13:44	0.2
405	5/2/2016 13:44	0.2
406	5/2/2016 13:44	0.2
407	5/2/2016 13:44	0.2
408	5/2/2016 13:45	0.2
409	5/2/2016 13:45	0.2
410	5/2/2016 13:45	0.2
411	5/2/2016 13:45	0.2
412	5/2/2016 13:45	0.2
413	5/2/2016 13:45	0.2
414	5/2/2016 13:45	0.2
415	5/2/2016 13:45	0.2
416	5/2/2016 13:45	0.2
417	5/2/2016 13:45	0.2
418	5/2/2016 13:45	0.2
419	5/2/2016 13:45	0.2
420	5/2/2016 13:46	0.2
421	5/2/2016 13:46	0.3
422	5/2/2016 13:46	0.2
423	5/2/2016 13:46	0.3
424	5/2/2016 13:46	0.3
425	5/2/2016 13:46	0.3
426	5/2/2016 13:46	0.3
427	5/2/2016 13:46	0.9

LOCATION ID	DATE AND TIME OF MEASUREMENT	ADJUSTED TOC CONCENTRATION (ppmv)
384	5/2/2016 13:43	0.2
385	5/2/2016 13:43	0.2
386	5/2/2016 13:43	0.2
387	5/2/2016 13:43	0.2
388	5/2/2016 13:43	0.2
433	5/2/2016 13:47	2.5
434	5/2/2016 13:47	1.6
435	5/2/2016 13:47	0.9
436	5/2/2016 13:47	0.4
437	5/2/2016 13:47	0.8
438	5/2/2016 13:47	0.3
439	5/2/2016 13:47	0.4
440	5/2/2016 13:47	0.3
441	5/2/2016 13:47	0.3
442	5/2/2016 13:47	0.4
443	5/2/2016 13:47	0.3
444	5/2/2016 13:48	0.2
445	5/2/2016 13:48	0.1
446	5/2/2016 13:48	0.2
447	5/2/2016 13:48	0.2
448	5/2/2016 13:48	0.2
449	5/2/2016 13:48	0.1
450	5/2/2016 13:48	0.1
451	5/2/2016 13:48	0.1
452	5/2/2016 13:48	0.1
453	5/2/2016 13:48	1.5
454	5/2/2016 13:48	3
455	5/2/2016 13:48	3.6
456	5/2/2016 13:49	1.5
457	5/2/2016 13:49	0.8
458	5/2/2016 13:49	0.3
459	5/2/2016 13:49	0.2
460	5/2/2016 13:49	0.3
461	5/2/2016 13:49	0.9
462	5/2/2016 13:49	1
463	5/2/2016 13:49	1.4
464	5/2/2016 13:49	1.4
465	5/2/2016 13:49	0.8
466	5/2/2016 13:49	0.8
467	5/2/2016 13:49	0.3
468	5/2/2016 13:50	0.3
469	5/2/2016 13:50	0.2
470	5/2/2016 13:50	0.3

LOCATION ID	DATE AND TIME OF MEASUREMENT	ADJUSTED TOC CONCENTRATION (ppmv)
428	5/2/2016 13:46	1.5
429	5/2/2016 13:46	1.7
430	5/2/2016 13:46	1.9
431	5/2/2016 13:46	2.7
432	5/2/2016 13:47	2.1
477	5/2/2016 13:50	0.3
478	5/2/2016 13:50	0.3
479	5/2/2016 13:50	0.4
480	5/2/2016 13:51	0.5
481	5/2/2016 13:51	0.4
482	5/2/2016 13:51	0.2
483	5/2/2016 13:51	0.2
484	5/2/2016 13:51	0.2
485	5/2/2016 13:51	0.2
486	5/2/2016 13:51	0.4
487	5/2/2016 13:51	0.3
488	5/2/2016 13:51	0.3
489	5/2/2016 13:51	0.3
490	5/2/2016 13:51	0.1
491	5/2/2016 13:51	0
492	5/2/2016 13:52	0
493	5/2/2016 13:52	0
494	5/2/2016 13:52	0
495	5/2/2016 13:52	0
496	5/2/2016 13:52	0
497	5/2/2016 13:52	0
498	5/2/2016 13:52	0
499	5/2/2016 13:52	0
500	5/2/2016 13:52	0
501	5/2/2016 13:52	0
502	5/2/2016 13:52	0
503	5/2/2016 13:52	0
504	5/2/2016 13:53	0
505	5/2/2016 13:53	0
506	5/2/2016 13:53	0.1
507	5/2/2016 13:53	0.1
508	5/2/2016 13:53	0.1
509	5/2/2016 13:53	0.2
510	5/2/2016 13:53	0.1
511	5/2/2016 13:53	0.1
512	5/2/2016 13:53	0.1
513	5/2/2016 13:53	0.1
514	5/2/2016 13:53	0.1



LOCATION ID	DATE AND TIME OF MEASUREMENT	ADJUSTED TOC CONCENTRATION (ppmv)
471	5/2/2016 13:50	0.3
472	5/2/2016 13:50	0.4
473	5/2/2016 13:50	0.4
474	5/2/2016 13:50	0.2
475	5/2/2016 13:50	0.2
476	5/2/2016 13:50	0.2
521	5/2/2016 13:54	0.2
522	5/2/2016 13:54	0.2
523	5/2/2016 13:54	0.1
524	5/2/2016 13:54	0.1
525	5/2/2016 13:54	0.1
526	5/2/2016 13:54	0.1
527	5/2/2016 13:54	0.1
528	5/2/2016 13:55	0.1
529	5/2/2016 13:55	0.1
530	5/2/2016 13:55	0.2
531	5/2/2016 13:55	0.2
532	5/2/2016 13:55	0.2
533	5/2/2016 13:55	0.2
534	5/2/2016 13:55	0.2
535	5/2/2016 13:55	0.2
536	5/2/2016 13:55	0.2
537	5/2/2016 13:55	0.2
538	5/2/2016 13:55	0.2
539	5/2/2016 13:55	0.2
540	5/2/2016 13:56	0.2
541	5/2/2016 13:56	0.2
542	5/2/2016 13:56	0.1
543	5/2/2016 13:56	0.2
544	5/2/2016 13:56	0.2
545	5/2/2016 13:56	0
546	5/2/2016 13:56	0
547	5/2/2016 13:56	0.1
548	5/2/2016 13:56	0.1
549	5/2/2016 13:56	0.1
550	5/2/2016 13:56	0.1
551	5/2/2016 13:57	0.1
552	5/2/2016 13:57	0.1
553	5/2/2016 13:57	0.1
554	5/2/2016 13:57	0.3
555	5/2/2016 13:57	0
556	5/2/2016 13:57	0
557	5/2/2016 13:57	0.1

LOCATION ID	DATE AND TIME OF MEASUREMENT	ADJUSTED TOC CONCENTRATION (ppmv)
515	5/2/2016 13:53	0.1
516	5/2/2016 13:54	0.2
517	5/2/2016 13:54	0.2
518	5/2/2016 13:54	0.2
519	5/2/2016 13:54	0.2
520	5/2/2016 13:54	0.2
565	5/2/2016 13:58	0.1
566	5/2/2016 13:58	0
567	5/2/2016 13:58	0
568	5/2/2016 13:58	0.1
569	5/2/2016 13:58	0
570	5/2/2016 13:58	0
571	5/2/2016 13:58	0.1
572	5/2/2016 13:58	0
573	5/2/2016 13:58	0
574	5/2/2016 13:58	0
575	5/2/2016 13:59	0
576	5/2/2016 13:59	0.1
577	5/2/2016 13:59	0.1
578	5/2/2016 13:59	0.1
579	5/2/2016 13:59	0.1
580	5/2/2016 13:59	0.1
581	5/2/2016 13:59	0.1
582	5/2/2016 13:59	0
583	5/2/2016 13:59	0.1
584	5/2/2016 13:59	0.1
585	5/2/2016 13:59	0
586	5/2/2016 13:59	0.1
587	5/2/2016 14:00	0.1
588	5/2/2016 14:00	0.1
589	5/2/2016 14:00	0
590	5/2/2016 14:00	0.1
591	5/2/2016 14:00	0.1
592	5/2/2016 14:00	0.1
593	5/2/2016 14:00	0
594	5/2/2016 14:00	0.1
595	5/2/2016 14:00	0.1
596	5/2/2016 14:00	0.1
597	5/2/2016 14:00	0.1
598	5/2/2016 14:00	0.1
599	5/2/2016 14:01	0.1
600	5/2/2016 14:01	0.4
601	5/2/2016 14:01	0.3

LOCATION ID	DATE AND TIME OF MEASUREMENT	ADJUSTED TOC CONCENTRATION (ppmv)
558	5/2/2016 13:57	0.1
559	5/2/2016 13:57	0.1
560	5/2/2016 13:57	0.1
561	5/2/2016 13:57	0.1
562	5/2/2016 13:57	0
563	5/2/2016 13:58	0.1
564	5/2/2016 13:58	0.1
609	5/2/2016 14:01	<b>25.9</b>
610	5/2/2016 14:01	<b>20.2</b>
611	5/2/2016 14:02	<b>5.2</b>
612	5/2/2016 14:02	2.8
613	5/2/2016 14:02	<b>13.8</b>
614	5/2/2016 14:02	<b>27.2</b>
615	5/2/2016 14:02	<b>39.6</b>
616	5/2/2016 14:02	<b>34.7</b>
617	5/2/2016 14:02	<b>22.8</b>
618	5/2/2016 14:02	<b>10.8</b>
619	5/2/2016 14:02	<b>12.9</b>
620	5/2/2016 14:02	<b>8.6</b>
621	5/2/2016 14:02	0.4
622	5/2/2016 14:02	0.1
623	5/2/2016 14:03	0.1
624	5/2/2016 14:03	0.1
625	5/2/2016 14:03	0.1
626	5/2/2016 14:03	0.1
627	5/2/2016 14:03	0.1
628	5/2/2016 14:03	0.1
629	5/2/2016 14:03	0.1
630	5/2/2016 14:03	0.3
631	5/2/2016 14:03	0.6
632	5/2/2016 14:03	0.6
633	5/2/2016 14:03	0.5
634	5/2/2016 14:04	0.3
635	5/2/2016 14:04	0.2
636	5/2/2016 14:04	0
637	5/2/2016 14:04	0.1
638	5/2/2016 14:04	0.1
639	5/2/2016 14:04	0
640	5/2/2016 14:04	0.1
641	5/2/2016 14:04	0.2
642	5/2/2016 14:04	0.1
643	5/2/2016 14:04	0.1
644	5/2/2016 14:04	0.1

LOCATION ID	DATE AND TIME OF MEASUREMENT	ADJUSTED TOC CONCENTRATION (ppmv)
602	5/2/2016 14:01	2.8
603	5/2/2016 14:01	2.6
604	5/2/2016 14:01	2.7
605	5/2/2016 14:01	4
606	5/2/2016 14:01	3.4
607	5/2/2016 14:01	<b>10.5</b>
608	5/2/2016 14:01	<b>19.2</b>
653	5/2/2016 14:05	0.1
654	5/2/2016 14:05	0.1
655	5/2/2016 14:05	0.1
656	5/2/2016 14:05	0.1
657	5/2/2016 14:05	0.1
658	5/2/2016 14:06	0.1
659	5/2/2016 14:06	0
660	5/2/2016 14:06	0
661	5/2/2016 14:06	0
662	5/2/2016 14:06	0
663	5/2/2016 14:06	0
664	5/2/2016 14:06	0
665	5/2/2016 14:06	0.1
666	5/2/2016 14:06	0.1
667	5/2/2016 14:06	0.1
668	5/2/2016 14:06	0.1
669	5/2/2016 14:06	0.1
670	5/2/2016 14:07	0.1
671	5/2/2016 14:07	0.2
672	5/2/2016 14:07	0.2
673	5/2/2016 14:07	0.2
674	5/2/2016 14:07	0.1
675	5/2/2016 14:07	0.3
676	5/2/2016 14:07	0.2
677	5/2/2016 14:07	0.1
678	5/2/2016 14:07	0
679	5/2/2016 14:07	0.1
680	5/2/2016 14:07	0.3
681	5/2/2016 14:07	0.2
682	5/2/2016 14:08	0.2
683	5/2/2016 14:08	0.1
684	5/2/2016 14:08	0.1
685	5/2/2016 14:08	0.1
686	5/2/2016 14:08	0.1
687	5/2/2016 14:08	0.1
688	5/2/2016 14:08	0.1

LOCATION ID	DATE AND TIME OF MEASUREMENT	ADJUSTED TOC CONCENTRATION (ppmv)
645	5/2/2016 14:04	0.1
646	5/2/2016 14:05	0.2
647	5/2/2016 14:05	0.2
648	5/2/2016 14:05	0.2
649	5/2/2016 14:05	0
650	5/2/2016 14:05	0
651	5/2/2016 14:05	0
652	5/2/2016 14:05	0.2
697	5/2/2016 14:09	0.3
698	5/2/2016 14:09	0.2
699	5/2/2016 14:09	0.2
700	5/2/2016 14:09	0.2
701	5/2/2016 14:09	0.1
702	5/2/2016 14:09	0.1
703	5/2/2016 14:09	0.2
704	5/2/2016 14:09	0.2
705	5/2/2016 14:09	0.2
706	5/2/2016 14:10	0.2
707	5/2/2016 14:10	0.1
708	5/2/2016 14:10	0.1
709	5/2/2016 14:10	0.2
710	5/2/2016 14:10	0.1
711	5/2/2016 14:10	0.1
712	5/2/2016 14:10	0.1
713	5/2/2016 14:10	0.1
714	5/2/2016 14:10	0.1
715	5/2/2016 14:10	0.1
716	5/2/2016 14:10	0.1
717	5/2/2016 14:10	0.2
718	5/2/2016 14:11	0.1
719	5/2/2016 14:11	0.1
720	5/2/2016 14:11	0.1
721	5/2/2016 14:11	0.1
722	5/2/2016 14:11	0.2
723	5/2/2016 14:11	0.1
724	5/2/2016 14:11	0.1
725	5/2/2016 14:11	0.1
726	5/2/2016 14:11	0.1
727	5/2/2016 14:11	0.2
728	5/2/2016 14:11	0.1
729	5/2/2016 14:11	0.1
730	5/2/2016 14:12	0.2
731	5/2/2016 14:12	0.2

LOCATION ID	DATE AND TIME OF MEASUREMENT	ADJUSTED TOC CONCENTRATION (ppmv)
689	5/2/2016 14:08	0.1
690	5/2/2016 14:08	0.1
691	5/2/2016 14:08	0.2
692	5/2/2016 14:08	0.1
693	5/2/2016 14:08	0.1
694	5/2/2016 14:09	0.3
695	5/2/2016 14:09	0.2
696	5/2/2016 14:09	0.3
741	5/2/2016 14:12	0.1
742	5/2/2016 14:13	0.2
743	5/2/2016 14:13	0.2
744	5/2/2016 14:13	0.1
745	5/2/2016 14:13	0.1
746	5/2/2016 14:13	0.2
747	5/2/2016 14:13	0.2
748	5/2/2016 14:13	0.2
749	5/2/2016 14:13	0.2
750	5/2/2016 14:13	0.2
751	5/2/2016 14:13	0.2
752	5/2/2016 14:13	0.2
753	5/2/2016 14:13	0.1
754	5/2/2016 14:14	0.2
755	5/2/2016 14:14	0.2
756	5/2/2016 14:14	0.1
757	5/2/2016 14:14	0.1
758	5/2/2016 14:14	0.2
759	5/2/2016 14:14	0.1
760	5/2/2016 14:14	0.1
761	5/2/2016 14:14	0.1
762	5/2/2016 14:14	0.1
763	5/2/2016 14:14	0.2
764	5/2/2016 14:14	0.1
765	5/2/2016 14:14	0.1
766	5/2/2016 14:15	0.1
767	5/2/2016 14:15	0.2
768	5/2/2016 14:15	0.1
769	5/2/2016 14:15	0.1
770	5/2/2016 14:15	0.2
771	5/2/2016 14:15	0.1
772	5/2/2016 14:15	0.1
773	5/2/2016 14:15	0.1
774	5/2/2016 14:15	0.1
775	5/2/2016 14:15	0.1

LOCATION ID	DATE AND TIME OF MEASUREMENT	ADJUSTED TOC CONCENTRATION (ppmv)
732	5/2/2016 14:12	0.1
733	5/2/2016 14:12	0.1
734	5/2/2016 14:12	0.2
735	5/2/2016 14:12	0.1
736	5/2/2016 14:12	0.2
737	5/2/2016 14:12	0.1
738	5/2/2016 14:12	0.2
739	5/2/2016 14:12	0.1
740	5/2/2016 14:12	0.2
785	5/2/2016 14:16	0.1
786	5/2/2016 14:16	0.1
787	5/2/2016 14:16	0.1
788	5/2/2016 14:16	0.1
789	5/2/2016 14:16	0.1
790	5/2/2016 14:17	0.1
791	5/2/2016 14:17	0.1
792	5/2/2016 14:17	0.1
793	5/2/2016 14:17	0.1
794	5/2/2016 14:17	0.1
795	5/2/2016 14:17	0.1
796	5/2/2016 14:17	0.1
797	5/2/2016 14:17	0.1
798	5/2/2016 14:17	0
799	5/2/2016 14:17	0.1
800	5/2/2016 14:17	0.1
801	5/2/2016 14:17	0.1
802	5/2/2016 14:18	0.1
803	5/2/2016 14:18	0.1
804	5/2/2016 14:18	0.1
805	5/2/2016 14:18	0.1
806	5/2/2016 14:18	0.1
807	5/2/2016 14:18	0.1
808	5/2/2016 14:18	0
809	5/2/2016 14:18	0.1
810	5/2/2016 14:18	0.1
811	5/2/2016 14:18	0.1
812	5/2/2016 14:18	0.1
813	5/2/2016 14:19	0.1
814	5/2/2016 14:19	0.1
815	5/2/2016 14:19	0.1
816	5/2/2016 14:19	0.1
817	5/2/2016 14:19	0.1
818	5/2/2016 14:19	0.1

LOCATION ID	DATE AND TIME OF MEASUREMENT	ADJUSTED TOC CONCENTRATION (ppmv)
776	5/2/2016 14:15	0.1
777	5/2/2016 14:15	0.1
778	5/2/2016 14:16	0.1
779	5/2/2016 14:16	0.1
780	5/2/2016 14:16	0.1
781	5/2/2016 14:16	0.1
782	5/2/2016 14:16	0.1
783	5/2/2016 14:16	0
784	5/2/2016 14:16	0.2
829	5/2/2016 14:20	0.1
830	5/2/2016 14:20	0.1
831	5/2/2016 14:20	0.1
832	5/2/2016 14:20	0.1
833	5/2/2016 14:20	0.1
834	5/2/2016 14:20	0.2
835	5/2/2016 14:20	0.1
836	5/2/2016 14:20	0.1
837	5/2/2016 14:21	0.1
838	5/2/2016 14:21	0.1
839	5/2/2016 14:21	0.1
840	5/2/2016 14:21	0.1
841	5/2/2016 14:21	0.1
842	5/2/2016 14:21	0.1
843	5/2/2016 14:21	0.1
844	5/2/2016 14:21	0.1
845	5/2/2016 14:21	0.1
846	5/2/2016 14:21	0.1
847	5/2/2016 14:21	0.1
848	5/2/2016 14:21	0.1
849	5/2/2016 14:22	0.1
850	5/2/2016 14:22	0
851	5/2/2016 14:22	0.1
852	5/2/2016 14:22	0.1
853	5/2/2016 14:22	0.1
854	5/2/2016 14:22	0.1
855	5/2/2016 14:22	0.1
856	5/2/2016 14:22	0
857	5/2/2016 14:22	0.2
858	5/2/2016 14:22	0
859	5/2/2016 14:22	0.1
860	5/2/2016 14:22	0.1
861	5/2/2016 14:23	0.1
862	5/2/2016 14:23	0

LOCATION ID	DATE AND TIME OF MEASUREMENT	ADJUSTED TOC CONCENTRATION (ppmv)
819	5/2/2016 14:19	0.1
820	5/2/2016 14:19	0.1
821	5/2/2016 14:19	0.1
822	5/2/2016 14:19	0.1
823	5/2/2016 14:19	0.1
824	5/2/2016 14:19	0.1
825	5/2/2016 14:20	0.1
826	5/2/2016 14:20	0
827	5/2/2016 14:20	0.1
828	5/2/2016 14:20	0.1
873	5/2/2016 14:24	0.4
874	5/2/2016 14:24	0.2
875	5/2/2016 14:24	0.1
876	5/2/2016 14:24	0.1
877	5/2/2016 14:24	0.1
878	5/2/2016 14:24	0
879	5/2/2016 14:24	0.2
880	5/2/2016 14:24	0.2
881	5/2/2016 14:24	0.1
882	5/2/2016 14:24	0.1
883	5/2/2016 14:24	0
884	5/2/2016 14:24	0.1
885	5/2/2016 14:25	0
886	5/2/2016 14:25	0
887	5/2/2016 14:25	0
888	5/2/2016 14:25	0
889	5/2/2016 14:25	0
890	5/2/2016 14:25	0
891	5/2/2016 14:25	0
892	5/2/2016 14:25	0
893	5/2/2016 14:25	0.5
894	5/2/2016 14:25	4.8
895	5/2/2016 14:25	3.2
896	5/2/2016 14:25	2
897	5/2/2016 14:26	1.7
898	5/2/2016 14:26	4.5
899	5/2/2016 14:26	<b>10</b>
900	5/2/2016 14:26	<b>11.2</b>
901	5/2/2016 14:26	<b>13.3</b>
902	5/2/2016 14:26	<b>8.5</b>
903	5/2/2016 14:26	0.6
904	5/2/2016 14:26	1.6
905	5/2/2016 14:26	<b>7.7</b>

LOCATION ID	DATE AND TIME OF MEASUREMENT	ADJUSTED TOC CONCENTRATION (ppmv)
863	5/2/2016 14:23	0.1
864	5/2/2016 14:23	0.3
865	5/2/2016 14:23	0.5
866	5/2/2016 14:23	0.4
867	5/2/2016 14:23	0.4
868	5/2/2016 14:23	0.6
869	5/2/2016 14:23	1.1
870	5/2/2016 14:23	2
871	5/2/2016 14:23	0.7
872	5/2/2016 14:23	0.5
917	5/2/2016 14:27	<b>6.3</b>
918	5/2/2016 14:27	4.5
919	5/2/2016 14:27	1.2
920	5/2/2016 14:27	0.6
921	5/2/2016 14:28	1.5
922	5/2/2016 14:28	0.3
923	5/2/2016 14:28	0.1
924	5/2/2016 14:28	<b>17.5</b>
925	5/2/2016 14:28	<b>77.4</b>
926	5/2/2016 14:28	<b>6.4</b>
927	5/2/2016 14:28	0.4
928	5/2/2016 14:28	4.2
929	5/2/2016 14:28	<b>28.2</b>
930	5/2/2016 14:28	0.1
931	5/2/2016 14:28	0
932	5/2/2016 14:28	0
933	5/2/2016 14:29	0
934	5/2/2016 14:29	0
935	5/2/2016 14:29	0
936	5/2/2016 14:29	0
937	5/2/2016 14:29	0
938	5/2/2016 14:29	0
939	5/2/2016 14:29	0.1
940	5/2/2016 14:29	0
941	5/2/2016 14:29	0
942	5/2/2016 14:29	0
943	5/2/2016 14:29	0
944	5/2/2016 14:29	0.1
945	5/2/2016 14:30	0.1
946	5/2/2016 14:30	0
947	5/2/2016 14:30	0
948	5/2/2016 14:30	0
949	5/2/2016 14:30	0

LOCATION ID	DATE AND TIME OF MEASUREMENT	ADJUSTED TOC CONCENTRATION (ppmv)
906	5/2/2016 14:26	17.4
907	5/2/2016 14:26	8.8
908	5/2/2016 14:26	16.9
909	5/2/2016 14:27	27.7
910	5/2/2016 14:27	27.9
911	5/2/2016 14:27	25.8
912	5/2/2016 14:27	5.7
913	5/2/2016 14:27	0.9
914	5/2/2016 14:27	0.8
915	5/2/2016 14:27	1.8
916	5/2/2016 14:27	6.6
961	5/2/2016 14:31	0.1
962	5/2/2016 14:31	0
963	5/2/2016 14:31	0
964	5/2/2016 14:31	0
965	5/2/2016 14:31	0
966	5/2/2016 14:31	0
967	5/2/2016 14:31	0
968	5/2/2016 14:31	0
969	5/2/2016 14:32	0
970	5/2/2016 14:32	0
971	5/2/2016 14:32	0
972	5/2/2016 14:32	0.1
973	5/2/2016 14:32	0.1
974	5/2/2016 14:32	0
975	5/2/2016 14:32	0.1
976	5/2/2016 14:32	0.1
977	5/2/2016 14:32	0.1
978	5/2/2016 14:32	0
979	5/2/2016 14:32	1.1
980	5/2/2016 14:33	1
981	5/2/2016 14:33	0.5
982	5/2/2016 14:33	0.1
983	5/2/2016 14:33	0.1
984	5/2/2016 14:33	0.1
985	5/2/2016 14:33	0
986	5/2/2016 14:33	0
987	5/2/2016 14:33	0
988	5/2/2016 14:33	0
989	5/2/2016 14:33	0
990	5/2/2016 14:33	0
991	5/2/2016 14:33	0
992	5/2/2016 14:34	0

LOCATION ID	DATE AND TIME OF MEASUREMENT	ADJUSTED TOC CONCENTRATION (ppmv)
950	5/2/2016 14:30	0
951	5/2/2016 14:30	0
952	5/2/2016 14:30	0
953	5/2/2016 14:30	0
954	5/2/2016 14:30	0
955	5/2/2016 14:30	0
956	5/2/2016 14:30	0.1
957	5/2/2016 14:31	0.1
958	5/2/2016 14:31	0
959	5/2/2016 14:31	0
960	5/2/2016 14:31	0
1005	5/2/2016 14:35	0
1006	5/2/2016 14:35	0
1007	5/2/2016 14:35	0
1008	5/2/2016 14:35	0
1009	5/2/2016 14:35	0
1010	5/2/2016 14:35	0
1011	5/2/2016 14:35	0
1012	5/2/2016 14:35	0
1013	5/2/2016 14:35	0
1014	5/2/2016 14:35	0
1015	5/2/2016 14:35	0
1016	5/2/2016 14:36	0
1017	5/2/2016 14:36	0
1018	5/2/2016 14:36	0
1019	5/2/2016 14:36	0
1020	5/2/2016 14:36	0
1021	5/2/2016 14:36	0
1022	5/2/2016 14:36	0
1023	5/2/2016 14:36	0
1024	5/2/2016 14:36	0
1025	5/2/2016 14:36	0
1026	5/2/2016 14:36	0
1027	5/2/2016 14:36	0
1028	5/2/2016 14:37	0
1029	5/2/2016 14:37	0
1030	5/2/2016 14:37	0
1031	5/2/2016 14:37	0
1032	5/2/2016 14:37	0.1
1033	5/2/2016 14:37	0
1034	5/2/2016 14:37	0
1035	5/2/2016 14:37	0
1036	5/2/2016 14:37	0

LOCATION ID	DATE AND TIME OF MEASUREMENT	ADJUSTED TOC CONCENTRATION (ppmv)
993	5/2/2016 14:34	0
994	5/2/2016 14:34	0
995	5/2/2016 14:34	0
996	5/2/2016 14:34	0
997	5/2/2016 14:34	0
998	5/2/2016 14:34	0
999	5/2/2016 14:34	0
1000	5/2/2016 14:34	0
1001	5/2/2016 14:34	0
1002	5/2/2016 14:34	0
1003	5/2/2016 14:34	0
1004	5/2/2016 14:35	0
1049	5/2/2016 14:38	0
1050	5/2/2016 14:38	0
1051	5/2/2016 14:38	0
1052	5/2/2016 14:39	0
1053	5/2/2016 14:39	0
1054	5/2/2016 14:39	0
1055	5/2/2016 14:39	0
1056	5/2/2016 14:39	0
1057	5/2/2016 14:39	0
1058	5/2/2016 14:39	0
1059	5/2/2016 14:39	0
1060	5/2/2016 14:39	0
1061	5/2/2016 14:39	0
1062	5/2/2016 14:39	0
1063	5/2/2016 14:39	0
1064	5/2/2016 14:40	0
1065	5/2/2016 14:40	0
1066	5/2/2016 14:40	0
1067	5/2/2016 14:40	0
1068	5/2/2016 14:40	0
1069	5/2/2016 14:40	0
1070	5/2/2016 14:40	0
1071	5/2/2016 14:40	0
1072	5/2/2016 14:40	0
1073	5/2/2016 14:40	0
1074	5/2/2016 14:40	0
1075	5/2/2016 14:40	0
1076	5/2/2016 14:41	0
1077	5/2/2016 14:41	0
1078	5/2/2016 14:41	0
1079	5/2/2016 14:41	0.1

LOCATION ID	DATE AND TIME OF MEASUREMENT	ADJUSTED TOC CONCENTRATION (ppmv)
1037	5/2/2016 14:37	0
1038	5/2/2016 14:37	0
1039	5/2/2016 14:37	0
1040	5/2/2016 14:38	0
1041	5/2/2016 14:38	0
1042	5/2/2016 14:38	0
1043	5/2/2016 14:38	0
1044	5/2/2016 14:38	0
1045	5/2/2016 14:38	0
1046	5/2/2016 14:38	0
1047	5/2/2016 14:38	0.1
1048	5/2/2016 14:38	0
1093	5/2/2016 14:42	0
1094	5/2/2016 14:42	0
1095	5/2/2016 14:42	0
1096	5/2/2016 14:42	0
1097	5/2/2016 14:42	0
1098	5/2/2016 14:42	0
1099	5/2/2016 14:42	0
1100	5/2/2016 14:43	0
1101	5/2/2016 14:43	0
1102	5/2/2016 14:43	0
1103	5/2/2016 14:43	0
1104	5/2/2016 14:43	0
1105	5/2/2016 14:43	0
1106	5/2/2016 14:43	0
1107	5/2/2016 14:43	0
1108	5/2/2016 14:43	0
1109	5/2/2016 14:43	0
1110	5/2/2016 14:43	0
1111	5/2/2016 14:43	0
1112	5/2/2016 14:44	0
1113	5/2/2016 14:44	0
1114	5/2/2016 14:44	0
1115	5/2/2016 14:44	0
1116	5/2/2016 14:44	0
1117	5/2/2016 14:44	0
1118	5/2/2016 14:44	0
1119	5/2/2016 14:44	0
1120	5/2/2016 14:44	0
1121	5/2/2016 14:44	0
1122	5/2/2016 14:44	0
1123	5/2/2016 14:45	0

LOCATION ID	DATE AND TIME OF MEASUREMENT	ADJUSTED TOC CONCENTRATION (ppmv)
1080	5/2/2016 14:41	0
1081	5/2/2016 14:41	0
1082	5/2/2016 14:41	0
1083	5/2/2016 14:41	0
1084	5/2/2016 14:41	0
1085	5/2/2016 14:41	0
1086	5/2/2016 14:41	0
1087	5/2/2016 14:41	0
1088	5/2/2016 14:42	0
1089	5/2/2016 14:42	0
1090	5/2/2016 14:42	0
1091	5/2/2016 14:42	0
1092	5/2/2016 14:42	0
1137	5/2/2016 14:46	0
1138	5/2/2016 14:46	0
1139	5/2/2016 14:46	0
1140	5/2/2016 14:46	0
1141	5/2/2016 14:46	0
1142	5/2/2016 14:46	0
1143	5/2/2016 14:46	0
1144	5/2/2016 14:46	0
1145	5/2/2016 14:46	0
1146	5/2/2016 14:46	0
1147	5/2/2016 14:47	0
1148	5/2/2016 14:47	0
1149	5/2/2016 14:47	0
1150	5/2/2016 14:47	0
1151	5/2/2016 14:47	0
1152	5/2/2016 14:47	0
1153	5/2/2016 14:47	0
1154	5/2/2016 14:47	0
1155	5/2/2016 14:47	0
1156	5/2/2016 14:47	0
1157	5/2/2016 14:47	0
1158	5/2/2016 14:47	0
1159	5/2/2016 14:48	0
1160	5/2/2016 14:48	0
1161	5/2/2016 14:48	0
1162	5/2/2016 14:48	0
1163	5/2/2016 14:48	0
1164	5/2/2016 14:48	0
1165	5/2/2016 14:48	0
1166	5/2/2016 14:48	0

LOCATION ID	DATE AND TIME OF MEASUREMENT	ADJUSTED TOC CONCENTRATION (ppmv)
1124	5/2/2016 14:45	0
1125	5/2/2016 14:45	0
1126	5/2/2016 14:45	0
1127	5/2/2016 14:45	0
1128	5/2/2016 14:45	0
1129	5/2/2016 14:45	0
1130	5/2/2016 14:45	0
1131	5/2/2016 14:45	0
1132	5/2/2016 14:45	0
1133	5/2/2016 14:45	0
1134	5/2/2016 14:45	0
1135	5/2/2016 14:46	0
1136	5/2/2016 14:46	0
1181	5/2/2016 14:49	0
1182	5/2/2016 14:49	0
1183	5/2/2016 14:50	0
1184	5/2/2016 14:50	0
1185	5/2/2016 14:50	0
1186	5/2/2016 14:50	0
1187	5/2/2016 14:50	0
1188	5/2/2016 14:50	0
1189	5/2/2016 14:50	0
1190	5/2/2016 14:50	0
1191	5/2/2016 14:50	0
1192	5/2/2016 14:50	0
1193	5/2/2016 14:50	0
1194	5/2/2016 14:50	0
1195	5/2/2016 14:51	0
1196	5/2/2016 14:51	0
1197	5/2/2016 14:51	0
1198	5/2/2016 14:51	0
1199	5/2/2016 14:51	0
1200	5/2/2016 14:51	0
1201	5/2/2016 14:51	0
1202	5/2/2016 14:51	0
1203	5/2/2016 14:51	0
1204	5/2/2016 14:51	0
1205	5/2/2016 14:51	0
1206	5/2/2016 14:51	0
1207	5/2/2016 14:52	0
1208	5/2/2016 14:52	0
1209	5/2/2016 14:52	0
1210	5/2/2016 14:52	0



LOCATION ID	DATE AND TIME OF MEASUREMENT	ADJUSTED TOC CONCENTRATION (ppmv)
1167	5/2/2016 14:48	0
1168	5/2/2016 14:48	0
1169	5/2/2016 14:48	0
1170	5/2/2016 14:48	0
1171	5/2/2016 14:49	0
1172	5/2/2016 14:49	0
1173	5/2/2016 14:49	0
1174	5/2/2016 14:49	0
1175	5/2/2016 14:49	0
1176	5/2/2016 14:49	0
1177	5/2/2016 14:49	0
1178	5/2/2016 14:49	0
1179	5/2/2016 14:49	0
1180	5/2/2016 14:49	0
1225	5/2/2016 14:53	0
1226	5/2/2016 14:53	0
1227	5/2/2016 14:53	0
1228	5/2/2016 14:53	0
1229	5/2/2016 14:53	0
1230	5/2/2016 14:54	0
1231	5/2/2016 14:54	0
1232	5/2/2016 14:54	0
1233	5/2/2016 14:54	0
1234	5/2/2016 14:54	0
1235	5/2/2016 14:54	0
1236	5/2/2016 14:54	0
1237	5/2/2016 14:54	0
1238	5/2/2016 14:54	0
1239	5/2/2016 14:54	0
1240	5/2/2016 14:54	0
1241	5/2/2016 14:54	0
1242	5/2/2016 14:55	0
1243	5/2/2016 14:55	0
1244	5/2/2016 14:55	0
1245	5/2/2016 14:55	0
1246	5/2/2016 14:55	0
1247	5/2/2016 14:55	0
1248	5/2/2016 14:55	0
1249	5/2/2016 14:55	0
1250	5/2/2016 14:55	0
1251	5/2/2016 14:55	0
1252	5/2/2016 14:55	0
1253	5/2/2016 14:55	0

LOCATION ID	DATE AND TIME OF MEASUREMENT	ADJUSTED TOC CONCENTRATION (ppmv)
1211	5/2/2016 14:52	0
1212	5/2/2016 14:52	0
1213	5/2/2016 14:52	0
1214	5/2/2016 14:52	0
1215	5/2/2016 14:52	0
1216	5/2/2016 14:52	0
1217	5/2/2016 14:52	0
1218	5/2/2016 14:53	0
1219	5/2/2016 14:53	0
1220	5/2/2016 14:53	0
1221	5/2/2016 14:53	0
1222	5/2/2016 14:53	0
1223	5/2/2016 14:53	0
1224	5/2/2016 14:53	0
1269	5/2/2016 14:57	0
1270	5/2/2016 14:57	0
1271	5/2/2016 14:57	0
1272	5/2/2016 14:57	0
1273	5/2/2016 14:57	0
1274	5/2/2016 14:57	0
1275	5/2/2016 14:57	0
1276	5/2/2016 14:57	0
1277	5/2/2016 14:57	0
1278	5/2/2016 14:58	0
1279	5/2/2016 14:58	0
1280	5/2/2016 14:58	0
1281	5/2/2016 14:58	0
1282	5/2/2016 14:58	0
1283	5/2/2016 14:58	0
1284	5/2/2016 14:58	0
1285	5/2/2016 14:58	0
1286	5/2/2016 14:58	0
1287	5/2/2016 14:58	0
1288	5/2/2016 14:58	0
1289	5/2/2016 14:59	0
1290	5/2/2016 14:59	0
1291	5/2/2016 14:59	0
1292	5/2/2016 14:59	0
1293	5/2/2016 14:59	0
1294	5/2/2016 14:59	0
1295	5/2/2016 14:59	0
1296	5/2/2016 14:59	0
1297	5/2/2016 14:59	0

LOCATION ID	DATE AND TIME OF MEASUREMENT	ADJUSTED TOC CONCENTRATION (ppmv)
1254	5/2/2016 14:56	0
1255	5/2/2016 14:56	0
1256	5/2/2016 14:56	0
1257	5/2/2016 14:56	0
1258	5/2/2016 14:56	0
1259	5/2/2016 14:56	0
1260	5/2/2016 14:56	0
1261	5/2/2016 14:56	0
1262	5/2/2016 14:56	0
1263	5/2/2016 14:56	0
1264	5/2/2016 14:56	0
1265	5/2/2016 14:56	0
1266	5/2/2016 14:57	0
1267	5/2/2016 14:57	0
1268	5/2/2016 14:57	0
1313	5/2/2016 15:01	0
1314	5/2/2016 15:01	0
1315	5/2/2016 15:01	0
1316	5/2/2016 15:01	0
1317	5/2/2016 15:01	0
1318	5/2/2016 15:01	0
1319	5/2/2016 15:01	0
1320	5/2/2016 15:01	0
1321	5/2/2016 15:01	0
1322	5/2/2016 15:01	0
1323	5/2/2016 15:01	0
1324	5/2/2016 15:01	0
1325	5/2/2016 15:02	0
1326	5/2/2016 15:02	0
1327	5/2/2016 15:02	0
1328	5/2/2016 15:02	0
1329	5/2/2016 15:02	0
1330	5/2/2016 15:02	0
1331	5/2/2016 15:02	0
1332	5/2/2016 15:02	0
1333	5/2/2016 15:02	0
1334	5/2/2016 15:02	0
1335	5/2/2016 15:02	0
1336	5/2/2016 15:02	0
1337	5/2/2016 15:03	0
1338	5/2/2016 15:03	0
1339	5/2/2016 15:03	0
1340	5/2/2016 15:03	0

LOCATION ID	DATE AND TIME OF MEASUREMENT	ADJUSTED TOC CONCENTRATION (ppmv)
1298	5/2/2016 14:59	0
1299	5/2/2016 14:59	0
1300	5/2/2016 14:59	0
1301	5/2/2016 15:00	0
1302	5/2/2016 15:00	0
1303	5/2/2016 15:00	0
1304	5/2/2016 15:00	0
1305	5/2/2016 15:00	0
1306	5/2/2016 15:00	0
1307	5/2/2016 15:00	0
1308	5/2/2016 15:00	0
1309	5/2/2016 15:00	0
1310	5/2/2016 15:00	0
1311	5/2/2016 15:00	0
1312	5/2/2016 15:00	0
1357	5/2/2016 15:04	0
1358	5/2/2016 15:04	0
1359	5/2/2016 15:04	0
1360	5/2/2016 15:04	0
1361	5/2/2016 15:05	2.4
1362	5/2/2016 15:05	1.8
1363	5/2/2016 15:05	0
1364	5/2/2016 15:05	0
1365	5/2/2016 15:05	0
1366	5/2/2016 15:05	0
1367	5/2/2016 15:05	0
1368	5/2/2016 15:05	0
1369	5/2/2016 15:05	0
1370	5/2/2016 15:05	0
1371	5/2/2016 15:05	0
1372	5/2/2016 15:05	0
1373	5/2/2016 15:06	0
1374	5/2/2016 15:06	0
1375	5/2/2016 15:06	0
1376	5/2/2016 15:06	0
1377	5/2/2016 15:06	0
1378	5/2/2016 15:06	0
1379	5/2/2016 15:06	0
1380	5/2/2016 15:06	0
1381	5/2/2016 15:06	0
1382	5/2/2016 15:06	0
1383	5/2/2016 15:06	0
1384	5/2/2016 15:06	0

LOCATION ID	DATE AND TIME OF MEASUREMENT	ADJUSTED TOC CONCENTRATION (ppmv)
1341	5/2/2016 15:03	0
1342	5/2/2016 15:03	0
1343	5/2/2016 15:03	0
1344	5/2/2016 15:03	0
1345	5/2/2016 15:03	0
1346	5/2/2016 15:03	0
1347	5/2/2016 15:03	0
1348	5/2/2016 15:03	0
1349	5/2/2016 15:04	0
1350	5/2/2016 15:04	0
1351	5/2/2016 15:04	0
1352	5/2/2016 15:04	0
1353	5/2/2016 15:04	0
1354	5/2/2016 15:04	0
1355	5/2/2016 15:04	0
1356	5/2/2016 15:04	0
1401	5/2/2016 15:08	0
1402	5/2/2016 15:08	0
1403	5/2/2016 15:08	0
1404	5/2/2016 15:08	0
1405	5/2/2016 15:08	0
1406	5/2/2016 15:08	0
1407	5/2/2016 15:08	0
1408	5/2/2016 15:08	0
1409	5/2/2016 15:09	0
1410	5/2/2016 15:09	0
1411	5/2/2016 15:09	0
1412	5/2/2016 15:09	0
1413	5/2/2016 15:09	0
1414	5/2/2016 15:09	0
1415	5/2/2016 15:09	0
1416	5/2/2016 15:09	0
1417	5/2/2016 15:09	0
1418	5/2/2016 15:09	0
1419	5/2/2016 15:09	0
1420	5/2/2016 15:09	0
1421	5/2/2016 15:10	0
1422	5/2/2016 15:10	0
1423	5/2/2016 15:10	0
1424	5/2/2016 15:10	0
1425	5/2/2016 15:10	0
1426	5/2/2016 15:10	0
1427	5/2/2016 15:10	0

LOCATION ID	DATE AND TIME OF MEASUREMENT	ADJUSTED TOC CONCENTRATION (ppmv)
1385	5/2/2016 15:07	0
1386	5/2/2016 15:07	0
1387	5/2/2016 15:07	0
1388	5/2/2016 15:07	0
1389	5/2/2016 15:07	0
1390	5/2/2016 15:07	0
1391	5/2/2016 15:07	0
1392	5/2/2016 15:07	0
1393	5/2/2016 15:07	0
1394	5/2/2016 15:07	0
1395	5/2/2016 15:07	0
1396	5/2/2016 15:07	0
1397	5/2/2016 15:08	0
1398	5/2/2016 15:08	0
1399	5/2/2016 15:08	0
1400	5/2/2016 15:08	0
1445	5/2/2016 15:12	0
1446	5/2/2016 15:12	0
1447	5/2/2016 15:12	0
1448	5/2/2016 15:12	0
1449	5/2/2016 15:12	0
1450	5/2/2016 15:12	0
1451	5/2/2016 15:12	0
1452	5/2/2016 15:12	0
1453	5/2/2016 15:12	0
1454	5/2/2016 15:12	0
1455	5/2/2016 15:12	0
1456	5/2/2016 15:13	0
1457	5/2/2016 15:13	0
1458	5/2/2016 15:13	0
1459	5/2/2016 15:13	0
1460	5/2/2016 15:13	0
1461	5/2/2016 15:13	0
1462	5/2/2016 15:13	0
1463	5/2/2016 15:13	0
1464	5/2/2016 15:13	0
1465	5/2/2016 15:13	0
1466	5/2/2016 15:13	0
1467	5/2/2016 15:13	0
1468	5/2/2016 15:14	0
1469	5/2/2016 15:14	0
1470	5/2/2016 15:14	0
1471	5/2/2016 15:14	0

LOCATION ID	DATE AND TIME OF MEASUREMENT	ADJUSTED TOC CONCENTRATION (ppmv)
1428	5/2/2016 15:10	0
1429	5/2/2016 15:10	0
1430	5/2/2016 15:10	0
1431	5/2/2016 15:10	0
1432	5/2/2016 15:10	0
1433	5/2/2016 15:11	0
1434	5/2/2016 15:11	0
1435	5/2/2016 15:11	0
1436	5/2/2016 15:11	0
1437	5/2/2016 15:11	0
1438	5/2/2016 15:11	0
1439	5/2/2016 15:11	0
1440	5/2/2016 15:11	0
1441	5/2/2016 15:11	0
1442	5/2/2016 15:11	0
1443	5/2/2016 15:11	0
1444	5/2/2016 15:12	0
1489	5/2/2016 15:15	0
1490	5/2/2016 15:15	0
1491	5/2/2016 15:15	0
1492	5/2/2016 15:16	0
1493	5/2/2016 15:16	0
1494	5/2/2016 15:16	0
1495	5/2/2016 15:16	0
1496	5/2/2016 15:16	0
1497	5/2/2016 15:16	0
1498	5/2/2016 15:16	0
1499	5/2/2016 15:16	0
1500	5/2/2016 15:16	0
1501	5/2/2016 15:16	0
1502	5/2/2016 15:16	0
1503	5/2/2016 15:16	0
1504	5/2/2016 15:17	0
1505	5/2/2016 15:17	0
1506	5/2/2016 15:17	0
1507	5/2/2016 15:17	0
1508	5/2/2016 15:17	0
1509	5/2/2016 15:17	0
1510	5/2/2016 15:17	0
1511	5/2/2016 15:17	0
1512	5/2/2016 15:17	0
1513	5/2/2016 15:17	0
1514	5/2/2016 15:17	0

LOCATION ID	DATE AND TIME OF MEASUREMENT	ADJUSTED TOC CONCENTRATION (ppmv)
1472	5/2/2016 15:14	0
1473	5/2/2016 15:14	0
1474	5/2/2016 15:14	0
1475	5/2/2016 15:14	0
1476	5/2/2016 15:14	0
1477	5/2/2016 15:14	0
1478	5/2/2016 15:14	0
1479	5/2/2016 15:14	0
1480	5/2/2016 15:15	0
1481	5/2/2016 15:15	0
1482	5/2/2016 15:15	0
1483	5/2/2016 15:15	0
1484	5/2/2016 15:15	0
1485	5/2/2016 15:15	0
1486	5/2/2016 15:15	0
1487	5/2/2016 15:15	0
1488	5/2/2016 15:15	0
1533	5/2/2016 15:19	0
1534	5/2/2016 15:19	0
1535	5/2/2016 15:19	0
1536	5/2/2016 15:19	0
1537	5/2/2016 15:19	0
1538	5/2/2016 15:19	0
1539	5/2/2016 15:19	0
1540	5/2/2016 15:20	0
1541	5/2/2016 15:20	0
1542	5/2/2016 15:20	0
1543	5/2/2016 15:20	0
1544	5/2/2016 15:20	0
1545	5/2/2016 15:20	0
1546	5/2/2016 15:20	0
1547	5/2/2016 15:20	0
1548	5/2/2016 15:20	0
1549	5/2/2016 15:20	0
1550	5/2/2016 15:20	0
1551	5/2/2016 15:20	0
1552	5/2/2016 15:21	0
1553	5/2/2016 15:21	0
1554	5/2/2016 15:21	0
1555	5/2/2016 15:21	0
1556	5/2/2016 15:21	0
1557	5/2/2016 15:21	0
1558	5/2/2016 15:21	0

LOCATION ID	DATE AND TIME OF MEASUREMENT	ADJUSTED TOC CONCENTRATION (ppmv)
1515	5/2/2016 15:17	0
1516	5/2/2016 15:18	0
1517	5/2/2016 15:18	0
1518	5/2/2016 15:18	0
1519	5/2/2016 15:18	0
1520	5/2/2016 15:18	0
1521	5/2/2016 15:18	0.2
1522	5/2/2016 15:18	0
1523	5/2/2016 15:18	0
1524	5/2/2016 15:18	0
1525	5/2/2016 15:18	0
1526	5/2/2016 15:18	0
1527	5/2/2016 15:18	0
1528	5/2/2016 15:19	0
1529	5/2/2016 15:19	0
1530	5/2/2016 15:19	0
1531	5/2/2016 15:19	0
1532	5/2/2016 15:19	0
1577	5/2/2016 15:37	0
1578	5/2/2016 15:37	0
1579	5/2/2016 15:37	0
1580	5/2/2016 15:37	0
1581	5/2/2016 15:37	0
1582	5/2/2016 15:37	0
1583	5/2/2016 15:37	0
1584	5/2/2016 15:37	0
1585	5/2/2016 15:37	0
1586	5/2/2016 15:37	0
1587	5/2/2016 15:37	0
1588	5/2/2016 15:37	0
1589	5/2/2016 15:38	0
1590	5/2/2016 15:38	0
1591	5/2/2016 15:38	0
1592	5/2/2016 15:38	0
1593	5/2/2016 15:38	0
1594	5/2/2016 15:38	0
1595	5/2/2016 15:38	0
1596	5/2/2016 15:38	0
1597	5/2/2016 15:38	0
1598	5/2/2016 15:38	0
1599	5/2/2016 15:38	0
1600	5/2/2016 15:38	0
1601	5/2/2016 15:39	0

LOCATION ID	DATE AND TIME OF MEASUREMENT	ADJUSTED TOC CONCENTRATION (ppmv)
1559	5/2/2016 15:21	0
1560	5/2/2016 15:21	0
1561	5/2/2016 15:21	0
1562	5/2/2016 15:21	0
1563	5/2/2016 15:21	0
1564	5/2/2016 15:22	0
1565	5/2/2016 15:22	0
1566	5/2/2016 15:22	0
1567	5/2/2016 15:22	0
1568	5/2/2016 15:22	0
1569	5/2/2016 15:36	0
1570	5/2/2016 15:36	0
1571	5/2/2016 15:36	0
1572	5/2/2016 15:36	0
1573	5/2/2016 15:36	0
1574	5/2/2016 15:36	0
1575	5/2/2016 15:36	0
1576	5/2/2016 15:36	0
1621	5/2/2016 15:40	0
1622	5/2/2016 15:40	0
1623	5/2/2016 15:40	0
1624	5/2/2016 15:41	0
1625	5/2/2016 15:41	0
1626	5/2/2016 15:41	0
1627	5/2/2016 15:41	0
1628	5/2/2016 15:41	0
1629	5/2/2016 15:41	0
1630	5/2/2016 15:41	0
1631	5/2/2016 16:02	0
1632	5/2/2016 16:02	0
1633	5/2/2016 16:02	0
1634	5/2/2016 16:02	0
1635	5/2/2016 16:02	0
1636	5/2/2016 16:02	0
1637	5/2/2016 16:02	0
1638	5/2/2016 16:02	0
1639	5/2/2016 16:02	0
1640	5/2/2016 16:02	0
1641	5/2/2016 16:02	0
1642	5/2/2016 16:02	0
1643	5/2/2016 16:03	0
1644	5/2/2016 16:03	0
1645	5/2/2016 16:03	0

LOCATION ID	DATE AND TIME OF MEASUREMENT	ADJUSTED TOC CONCENTRATION (ppmv)
1602	5/2/2016 15:39	0
1603	5/2/2016 15:39	0
1604	5/2/2016 15:39	0
1605	5/2/2016 15:39	0
1606	5/2/2016 15:39	0
1607	5/2/2016 15:39	0
1608	5/2/2016 15:39	0
1609	5/2/2016 15:39	0
1610	5/2/2016 15:39	0
1611	5/2/2016 15:39	0
1612	5/2/2016 15:40	0
1613	5/2/2016 15:40	0
1614	5/2/2016 15:40	0
1615	5/2/2016 15:40	0
1616	5/2/2016 15:40	0
1617	5/2/2016 15:40	0
1618	5/2/2016 15:40	0
1619	5/2/2016 15:40	0
1620	5/2/2016 15:40	0
1665	5/2/2016 16:05	0.4
1666	5/2/2016 16:05	2.7
1667	5/2/2016 16:05	2.2
1668	5/2/2016 16:05	0
1669	5/2/2016 16:05	0
1670	5/2/2016 16:05	2.3
1671	5/2/2016 16:06	1
1672	5/2/2016 16:06	0
1673	5/2/2016 16:06	0.4
1674	5/2/2016 16:06	1.9
1675	5/2/2016 16:06	2.2
1676	5/2/2016 16:06	1.7
1677	5/2/2016 16:06	1.6
1678	5/2/2016 16:06	<b>2086</b>
1679	5/2/2016 16:06	<b>5357.6</b>
1680	5/2/2016 16:06	<b>5323</b>
1681	5/2/2016 16:06	<b>3635.8</b>
1682	5/2/2016 16:06	<b>1900</b>
1683	5/2/2016 16:07	<b>2100.1</b>
1684	5/2/2016 16:07	<b>612.7</b>
1685	5/2/2016 16:07	<b>114.3</b>
1686	5/2/2016 16:07	<b>30.8</b>
1687	5/2/2016 16:07	<b>259.6</b>
1688	5/2/2016 16:07	<b>1585.4</b>

LOCATION ID	DATE AND TIME OF MEASUREMENT	ADJUSTED TOC CONCENTRATION (ppmv)
1646	5/2/2016 16:03	0
1647	5/2/2016 16:03	0
1648	5/2/2016 16:03	0
1649	5/2/2016 16:03	0
1650	5/2/2016 16:03	0
1651	5/2/2016 16:03	0
1652	5/2/2016 16:03	0
1653	5/2/2016 16:03	0
1654	5/2/2016 16:03	0
1655	5/2/2016 16:04	0
1656	5/2/2016 16:04	0
1657	5/2/2016 16:04	0
1658	5/2/2016 16:04	0
1659	5/2/2016 16:05	0
1660	5/2/2016 16:05	0.5
1661	5/2/2016 16:05	<b>5.5</b>
1662	5/2/2016 16:05	<b>5.6</b>
1663	5/2/2016 16:05	<b>15</b>
1664	5/2/2016 16:05	0
1709	5/2/2016 16:09	<b>80</b>
1710	5/2/2016 16:09	<b>619.3</b>
1711	5/2/2016 16:09	<b>122.7</b>
1712	5/2/2016 16:09	<b>44.2</b>
1713	5/2/2016 16:09	<b>12.6</b>
1714	5/2/2016 16:09	<b>15.6</b>
1715	5/2/2016 16:09	<b>30.8</b>
1716	5/2/2016 16:09	<b>9.2</b>
1717	5/2/2016 16:09	<b>6.9</b>
1718	5/2/2016 16:09	1.4
1719	5/2/2016 16:10	0
1720	5/2/2016 16:10	0.1
1721	5/2/2016 16:10	0
1722	5/2/2016 16:10	0
1723	5/2/2016 16:10	0
1724	5/2/2016 16:10	1.8
1725	5/2/2016 16:10	1.5
1726	5/2/2016 16:10	3
1727	5/2/2016 16:10	<b>11.2</b>
1728	5/2/2016 16:10	<b>10.3</b>
1729	5/2/2016 16:10	<b>973.1</b>
1730	5/2/2016 16:11	<b>556.4</b>
1731	5/2/2016 16:11	<b>11</b>
1732	5/2/2016 16:11	<b>11.2</b>

LOCATION ID	DATE AND TIME OF MEASUREMENT	ADJUSTED TOC CONCENTRATION (ppmv)
1689	5/2/2016 16:07	<b>575.3</b>
1690	5/2/2016 16:07	<b>10</b>
1691	5/2/2016 16:07	1.6
1692	5/2/2016 16:07	3.4
1693	5/2/2016 16:07	0
1694	5/2/2016 16:07	0.2
1695	5/2/2016 16:08	1.1
1696	5/2/2016 16:08	0
1697	5/2/2016 16:08	0
1698	5/2/2016 16:08	0
1699	5/2/2016 16:08	0
1700	5/2/2016 16:08	0
1701	5/2/2016 16:08	0
1702	5/2/2016 16:08	0
1703	5/2/2016 16:08	0
1704	5/2/2016 16:08	0
1705	5/2/2016 16:08	0
1706	5/2/2016 16:08	0
1707	5/2/2016 16:09	2.3
1708	5/2/2016 16:09	0
1753	5/2/2016 16:15	0
1754	5/2/2016 16:15	0
1755	5/2/2016 16:16	0
1756	5/2/2016 16:16	0
1757	5/2/2016 16:16	0
1758	5/2/2016 16:16	0
1759	5/2/2016 16:16	0.7
1760	5/2/2016 16:16	0.8
1761	5/2/2016 16:16	1.4
1762	5/2/2016 16:16	0.9
1763	5/2/2016 16:16	0
1764	5/2/2016 16:16	0
1765	5/2/2016 16:16	0
1766	5/2/2016 16:16	0
1767	5/2/2016 16:17	0
1768	5/2/2016 16:17	0
1769	5/2/2016 16:17	0
1770	5/2/2016 16:17	0
1771	5/2/2016 16:17	0
1772	5/2/2016 16:17	0
1773	5/2/2016 16:17	0
1774	5/2/2016 16:17	0
1775	5/2/2016 16:17	0

LOCATION ID	DATE AND TIME OF MEASUREMENT	ADJUSTED TOC CONCENTRATION (ppmv)
1733	5/2/2016 16:11	<b>2795.6</b>
1734	5/2/2016 16:11	<b>1047.7</b>
1735	5/2/2016 16:11	1.4
1736	5/2/2016 16:11	0.7
1737	5/2/2016 16:11	2.6
1738	5/2/2016 16:11	0
1739	5/2/2016 16:11	0.8
1740	5/2/2016 16:11	0.2
1741	5/2/2016 16:11	1.1
1742	5/2/2016 16:12	0
1743	5/2/2016 16:12	<b>105.3</b>
1744	5/2/2016 16:12	<b>85.5</b>
1745	5/2/2016 16:12	<b>11</b>
1746	5/2/2016 16:15	0
1747	5/2/2016 16:15	0
1748	5/2/2016 16:15	0
1749	5/2/2016 16:15	0
1750	5/2/2016 16:15	0
1751	5/2/2016 16:15	0
1752	5/2/2016 16:15	0
1797	5/2/2016 16:19	0
1798	5/2/2016 16:19	0
1799	5/2/2016 16:19	0
1800	5/2/2016 16:19	0
1801	5/2/2016 16:19	0
1802	5/2/2016 16:19	0
1803	5/2/2016 16:20	0
1804	5/2/2016 16:20	0
1805	5/2/2016 16:20	0
1806	5/2/2016 16:20	0
1807	5/2/2016 16:20	0
1808	5/2/2016 16:20	0
1809	5/2/2016 16:20	0
1810	5/2/2016 16:20	0
1811	5/2/2016 16:20	0
1812	5/2/2016 16:20	0
1813	5/2/2016 16:20	0
1814	5/2/2016 16:20	0
1815	5/2/2016 16:21	0
1816	5/2/2016 16:21	0
1817	5/2/2016 16:21	0
1818	5/2/2016 16:21	0
1819	5/2/2016 16:21	0

LOCATION ID	DATE AND TIME OF MEASUREMENT	ADJUSTED TOC CONCENTRATION (ppmv)
1776	5/2/2016 16:17	0
1777	5/2/2016 16:17	0
1778	5/2/2016 16:17	0
1779	5/2/2016 16:18	0
1780	5/2/2016 16:18	0
1781	5/2/2016 16:18	0
1782	5/2/2016 16:18	0
1783	5/2/2016 16:18	0
1784	5/2/2016 16:18	0
1785	5/2/2016 16:18	0
1786	5/2/2016 16:18	0
1787	5/2/2016 16:18	0
1788	5/2/2016 16:18	0
1789	5/2/2016 16:18	0
1790	5/2/2016 16:18	0
1791	5/2/2016 16:19	0
1792	5/2/2016 16:19	0
1793	5/2/2016 16:19	0
1794	5/2/2016 16:19	0
1795	5/2/2016 16:19	0
1796	5/2/2016 16:19	0
1841	5/2/2016 16:23	0
1842	5/2/2016 16:23	0
1843	5/2/2016 16:23	0
1844	5/2/2016 16:23	0
1845	5/2/2016 16:23	0
1846	5/2/2016 16:23	0
1847	5/2/2016 16:23	0
1848	5/2/2016 16:23	0
1849	5/2/2016 16:23	0
1850	5/2/2016 16:24	0
1851	5/2/2016 16:24	0
1852	5/2/2016 16:24	0
1853	5/2/2016 16:24	0
1854	5/2/2016 16:24	0
1855	5/2/2016 16:24	0
1856	5/2/2016 16:24	0
1857	5/2/2016 16:24	0
1858	5/2/2016 16:24	0
1859	5/2/2016 16:24	0
1860	5/2/2016 16:24	0
1861	5/2/2016 16:24	0
1862	5/2/2016 16:25	0

LOCATION ID	DATE AND TIME OF MEASUREMENT	ADJUSTED TOC CONCENTRATION (ppmv)
1820	5/2/2016 16:21	0
1821	5/2/2016 16:21	0
1822	5/2/2016 16:21	0
1823	5/2/2016 16:21	0
1824	5/2/2016 16:21	0
1825	5/2/2016 16:21	0
1826	5/2/2016 16:21	0
1827	5/2/2016 16:22	0
1828	5/2/2016 16:22	0
1829	5/2/2016 16:22	0
1830	5/2/2016 16:22	0
1831	5/2/2016 16:22	0
1832	5/2/2016 16:22	0
1833	5/2/2016 16:22	0
1834	5/2/2016 16:22	0
1835	5/2/2016 16:22	0
1836	5/2/2016 16:22	0
1837	5/2/2016 16:22	0
1838	5/2/2016 16:22	0
1839	5/2/2016 16:23	0
1840	5/2/2016 16:23	0
1885	5/2/2016 16:26	0
1886	5/2/2016 16:27	0
1887	5/2/2016 16:27	0
1888	5/2/2016 16:27	0
1889	5/2/2016 16:27	0
1890	5/2/2016 16:27	0
1891	5/2/2016 16:27	0
1892	5/2/2016 16:27	0
1893	5/2/2016 16:27	0
1894	5/2/2016 16:27	0
1895	5/2/2016 16:27	0
1896	5/2/2016 16:27	0
1897	5/2/2016 16:27	0
1898	5/2/2016 16:28	0
1899	5/2/2016 16:28	0
1900	5/2/2016 16:28	0
1901	5/2/2016 16:28	0
1902	5/2/2016 16:28	0
1903	5/2/2016 16:28	0
1904	5/2/2016 16:28	0
1905	5/2/2016 16:28	0
1906	5/2/2016 16:28	0



LOCATION ID	DATE AND TIME OF MEASUREMENT	ADJUSTED TOC CONCENTRATION (ppmv)
1863	5/2/2016 16:25	0
1864	5/2/2016 16:25	0
1865	5/2/2016 16:25	0
1866	5/2/2016 16:25	0
1867	5/2/2016 16:25	0
1868	5/2/2016 16:25	0
1869	5/2/2016 16:25	0
1870	5/2/2016 16:25	0
1871	5/2/2016 16:25	0
1872	5/2/2016 16:25	0
1873	5/2/2016 16:25	0
1874	5/2/2016 16:26	0
1875	5/2/2016 16:26	0
1876	5/2/2016 16:26	0
1877	5/2/2016 16:26	0
1878	5/2/2016 16:26	0
1879	5/2/2016 16:26	0
1880	5/2/2016 16:26	0
1881	5/2/2016 16:26	0
1882	5/2/2016 16:26	0
1883	5/2/2016 16:26	0
1884	5/2/2016 16:26	0
1929	5/2/2016 16:30	0
1930	5/2/2016 16:30	0
1931	5/2/2016 16:30	0
1932	5/2/2016 16:30	0
1933	5/2/2016 16:30	0
1934	5/2/2016 16:31	0
1935	5/2/2016 16:31	0
1936	5/2/2016 16:31	0
1937	5/2/2016 16:31	0
1938	5/2/2016 16:31	0
1939	5/2/2016 16:31	0
1940	5/2/2016 16:31	0
1941	5/2/2016 16:31	0
1942	5/2/2016 16:31	0
1943	5/2/2016 16:31	0
1944	5/2/2016 16:31	0
1945	5/2/2016 16:31	0
1946	5/2/2016 16:32	0
1947	5/2/2016 16:32	0
1948	5/2/2016 16:32	0
1949	5/2/2016 16:32	0

LOCATION ID	DATE AND TIME OF MEASUREMENT	ADJUSTED TOC CONCENTRATION (ppmv)
1907	5/2/2016 16:28	0
1908	5/2/2016 16:28	0
1909	5/2/2016 16:28	0
1910	5/2/2016 16:29	0
1911	5/2/2016 16:29	0
1912	5/2/2016 16:29	0
1913	5/2/2016 16:29	0
1914	5/2/2016 16:29	0
1915	5/2/2016 16:29	0
1916	5/2/2016 16:29	0
1917	5/2/2016 16:29	0
1918	5/2/2016 16:29	0
1919	5/2/2016 16:29	0
1920	5/2/2016 16:29	0
1921	5/2/2016 16:29	0
1922	5/2/2016 16:30	0
1923	5/2/2016 16:30	0
1924	5/2/2016 16:30	0
1925	5/2/2016 16:30	0
1926	5/2/2016 16:30	0
1927	5/2/2016 16:30	0
1928	5/2/2016 16:30	0
1973	5/2/2016 16:34	0
1974	5/2/2016 16:34	0
1975	5/2/2016 16:34	0
1976	5/2/2016 16:34	0
1977	5/2/2016 16:34	0
1978	5/2/2016 16:34	0
1979	5/2/2016 16:34	0
1980	5/2/2016 16:34	0
1981	5/2/2016 16:34	0
1982	5/2/2016 16:35	0
1983	5/2/2016 16:35	0
1984	5/2/2016 16:35	0
1985	5/2/2016 16:35	0
1986	5/2/2016 16:35	0
1987	5/2/2016 16:35	0
1988	5/2/2016 16:35	0
1989	5/2/2016 16:35	0
1990	5/2/2016 16:35	0
1991	5/2/2016 16:35	0
1992	5/2/2016 16:35	0
1993	5/2/2016 16:36	0

LOCATION ID	DATE AND TIME OF MEASUREMENT	ADJUSTED TOC CONCENTRATION (ppmv)
1950	5/2/2016 16:32	0
1951	5/2/2016 16:32	0
1952	5/2/2016 16:32	0
1953	5/2/2016 16:32	0
1954	5/2/2016 16:32	0
1955	5/2/2016 16:32	0
1956	5/2/2016 16:32	0
1957	5/2/2016 16:32	0
1958	5/2/2016 16:33	0
1959	5/2/2016 16:33	0
1960	5/2/2016 16:33	0
1961	5/2/2016 16:33	0
1962	5/2/2016 16:33	0
1963	5/2/2016 16:33	0
1964	5/2/2016 16:33	0
1965	5/2/2016 16:33	0
1966	5/2/2016 16:33	0
1967	5/2/2016 16:33	0
1968	5/2/2016 16:33	0
1969	5/2/2016 16:33	0
1970	5/2/2016 16:34	0
1971	5/2/2016 16:34	0
1972	5/2/2016 16:34	0
2017	5/2/2016 16:38	0
2018	5/2/2016 16:38	0
2019	5/2/2016 16:38	0
2020	5/2/2016 16:38	0
2021	5/2/2016 16:38	0
2022	5/2/2016 16:38	0
2023	5/2/2016 16:38	0
2024	5/2/2016 16:38	0
2025	5/2/2016 16:38	0
2026	5/2/2016 16:38	0
2027	5/2/2016 16:38	0
2028	5/2/2016 16:38	0
2029	5/2/2016 16:39	0
2030	5/2/2016 16:39	0
2031	5/2/2016 16:39	0
2032	5/2/2016 16:39	0
2033	5/2/2016 16:39	0
2034	5/2/2016 16:39	0
2035	5/2/2016 16:39	0
2036	5/2/2016 16:39	0

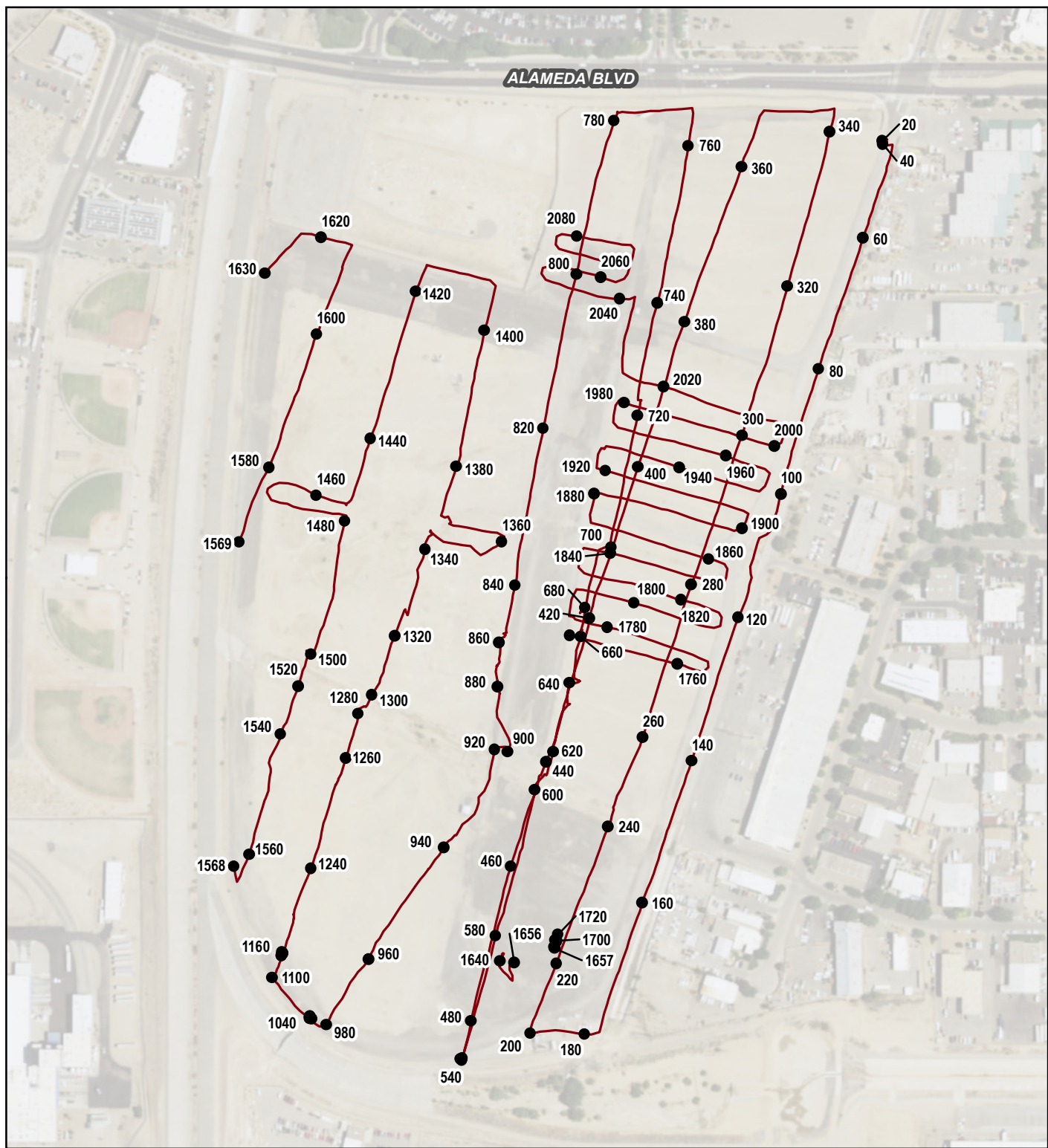
LOCATION ID	DATE AND TIME OF MEASUREMENT	ADJUSTED TOC CONCENTRATION (ppmv)
1994	5/2/2016 16:36	0
1995	5/2/2016 16:36	0
1996	5/2/2016 16:36	0
1997	5/2/2016 16:36	0
1998	5/2/2016 16:36	0
1999	5/2/2016 16:36	0
2000	5/2/2016 16:36	0
2001	5/2/2016 16:36	0
2002	5/2/2016 16:36	0
2003	5/2/2016 16:36	0
2004	5/2/2016 16:36	0
2005	5/2/2016 16:37	0
2006	5/2/2016 16:37	0
2007	5/2/2016 16:37	0
2008	5/2/2016 16:37	0
2009	5/2/2016 16:37	0
2010	5/2/2016 16:37	0
2011	5/2/2016 16:37	0
2012	5/2/2016 16:37	0
2013	5/2/2016 16:37	0
2014	5/2/2016 16:37	0
2015	5/2/2016 16:37	0
2016	5/2/2016 16:37	0
2061	5/2/2016 16:41	0
2062	5/2/2016 16:41	0
2063	5/2/2016 16:41	0
2064	5/2/2016 16:41	0
2065	5/2/2016 16:42	0
2066	5/2/2016 16:42	0
2067	5/2/2016 16:42	0
2068	5/2/2016 16:42	0
2069	5/2/2016 16:42	0
2070	5/2/2016 16:42	0
2071	5/2/2016 16:42	0
2072	5/2/2016 16:42	0
2073	5/2/2016 16:42	0
2074	5/2/2016 16:42	0
2075	5/2/2016 16:42	0
2076	5/2/2016 16:42	0
2077	5/2/2016 16:43	0
2078	5/2/2016 16:43	0
2079	5/2/2016 16:43	0
2080	5/2/2016 16:43	0

LOCATION ID	DATE AND TIME OF MEASUREMENT	ADJUSTED TOC CONCENTRATION (ppmv)
2037	5/2/2016 16:39	0
2038	5/2/2016 16:39	0
2039	5/2/2016 16:39	0
2040	5/2/2016 16:39	0
2041	5/2/2016 16:40	0
2042	5/2/2016 16:40	0
2043	5/2/2016 16:40	0
2044	5/2/2016 16:40	0
2045	5/2/2016 16:40	0
2046	5/2/2016 16:40	0
2047	5/2/2016 16:40	0
2048	5/2/2016 16:40	0
2049	5/2/2016 16:40	0
2050	5/2/2016 16:40	0
2051	5/2/2016 16:40	0
2052	5/2/2016 16:40	0
2053	5/2/2016 16:41	0
2054	5/2/2016 16:41	0
2055	5/2/2016 16:41	0
2056	5/2/2016 16:41	0
2057	5/2/2016 16:41	0
2058	5/2/2016 16:41	0
2059	5/2/2016 16:41	0
2060	5/2/2016 16:41	0

LOCATION ID	DATE AND TIME OF MEASUREMENT	ADJUSTED TOC CONCENTRATION (ppmv)
2081	5/2/2016 16:43	0
2082	5/2/2016 16:43	0
2083	5/2/2016 16:43	0
2084	5/2/2016 16:43	0
2085	5/2/2016 16:43	0
2086	5/2/2016 16:43	0
2087	5/2/2016 16:43	0
2088	5/2/2016 16:43	0
2089	5/2/2016 16:44	0
2090	5/2/2016 16:44	0

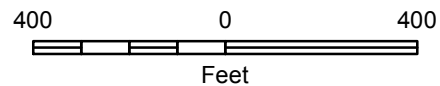
Notes:

Instrument = SiteFID SN: 000195113F3B  
 SiteFID was calibrated in the field prior to SEM  
 Values greater than 5 ppmv are **bolded**  
 ppmv = parts per million volumetric  
 TOC = total organic carbon  
 Adjusted means normalized from background



**Legend**

- Discrete SEM Data Point
- SEM Walking Path



Note: The surface emission monitoring was performed with a flame ionization detector that was programmed to collect a data point and reading every 5 seconds.

**Figure 1**  
 Albuquerque International Balloon Fiesta  
 Preparation May 2016 Surface Emission  
 Monitoring (SEM): Path Walked  
 COA Former Los Angeles Landfill



Data Source(s): Aerial Imagery -  
 ArcGIS online, aerial dated 2014.