

October 2, 2015

Mr. Paul Olson
Principal Engineer
City of Albuquerque
Environmental Health Department
Environmental Services Division – Room 3023
P. O. Box 1293
Albuquerque, New Mexico 87103

Re: Surface Emissions Monitoring at the Former Los Angeles Landfill in Preparation of RV Parking for the Albuquerque International Balloon Fiesta – September 2015

Mr. Olson,

Attached are the surface emissions monitoring (SEM) results that were recorded on September 14, 2015 at the former Los Angeles Landfill. The SEM monitoring was performed on behalf of the City of Albuquerque (COA) in preparation for opening the landfill to public use (RV parking) during the 2015 Albuquerque International Balloon Fiesta. The SEM was performed by continuously monitoring for landfill gas during a walking transect of the entire landfill. Monitoring was performed using a Inficon DataFID flame ionization detector (FID) and a RAE Systems combustible gas indicator (CGI). The DataFID detects combustible gasses at parts per million (ppm) levels and was calibrated to 500 ppm methane gas. The CGI measures hydrogen sulfide (ppm levels). The CGI was calibrated for hydrogen sulfide with a 25 ppm hydrogen sulfide calibration gas. A single SEM event was performed on the afternoon of September 14. The FID and CGI were programmed to log data every 5 seconds.

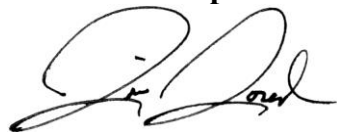
The results of the SEM showed that there were no significant detections of landfill gas. The lower explosive limit of methane is 50,000 ppm, and the highest total organic carbon (TOC) detection on the FID was 25.8 ppm. No hydrogen sulfide was detected above 0.1 ppm, which is within the expected drift of the CGI. There were some anomalous TOC data exceeding 5 ppm collected in the southeast end of the landfill. These data are unlikely to be attributed to landfill gas emissions through the landfill cap. The anomalous readings may be detections of discharged vapors from the soil vapor extraction building that was located to the west-northwest of where the detections were observed. The soil vapor extraction is turned off during the Albuquerque International Balloon Fiesta to abate the potential exposure of the public to toxic or flammable soil gas.

The results of the SEM event are attached along with a map showing the walking transect path. The transect started at the far northeast corner of the landfill at location identification number 1. Readings were logged every 5 seconds. The figure shows the position of the logged data relative to their locations on the landfill at intervals of 25 seconds.

Thank you for the opportunity to perform this work for the COA. If you have any questions, please let me know.

Paul Olson
October 2, 2015
Page 2

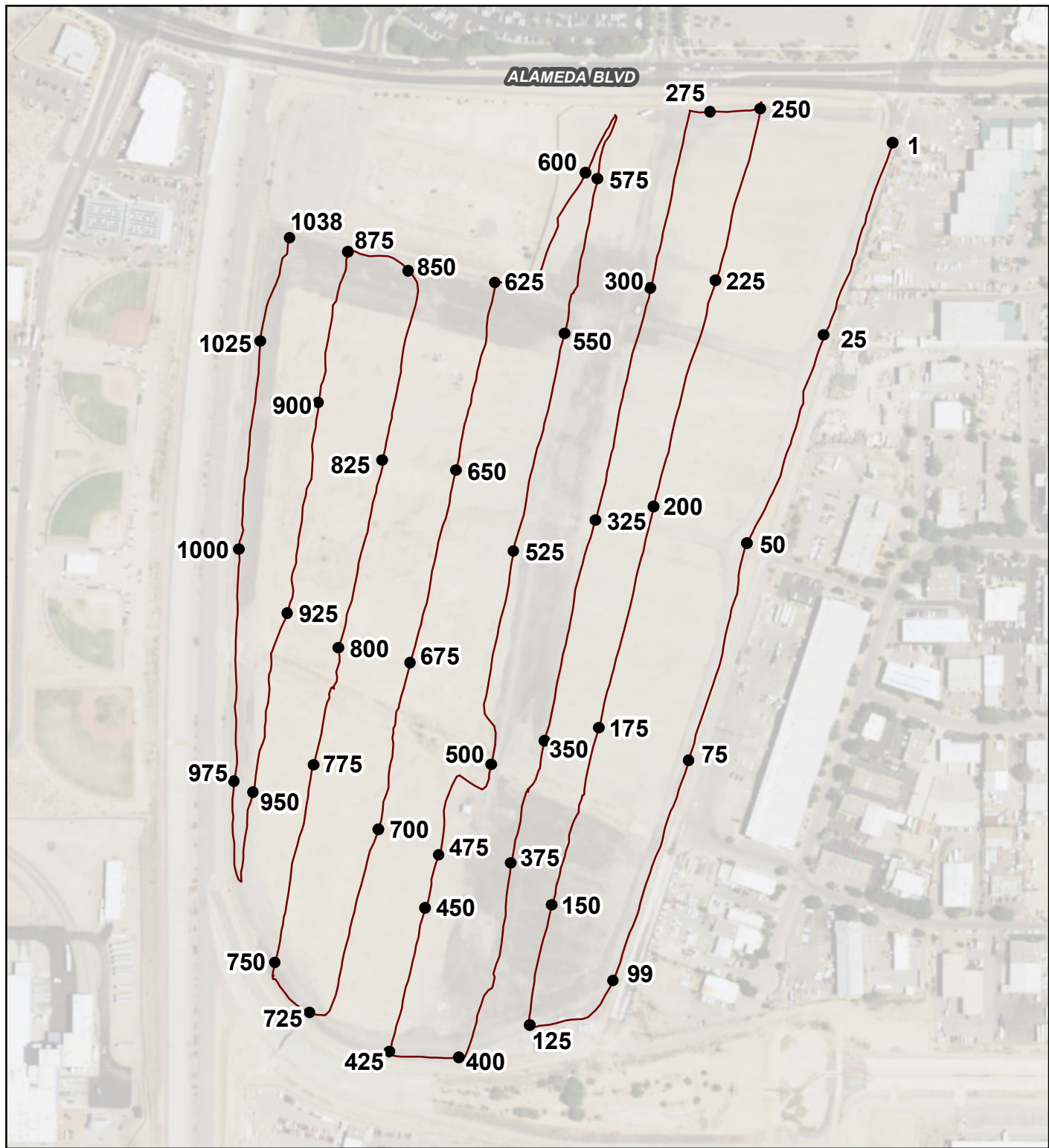
Sincerely,
INTERA Incorporated

A handwritten signature in black ink, appearing to read "Jim Joseph".

Jim Joseph
Project Manager

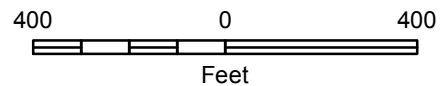
Attachment:
September 2015 SEM map and data

cc: Mr. Bart Faris, City of Albuquerque Environmental Health Department



Legend

- SEM Walking Path
- Discrete SEM Data Point



Note: The surface emission monitoring was performed with a flame ionization detector that was programmed to collect a data point and reading every 5 seconds.

Figure 1
 Albuquerque International Balloon Fiesta
 Preparation September 2015 Surface Emission
 Monitoring (SEM): Path Walked
 COA Former Los Angeles Landfill



Data Source(s): Aerial Imagery -
 ArcGIS online, aerial dated 2014.

FORMER LOS ANGELES LANDFILL
Albuquerque International Balloon Fiesta Surface Emission Monitoring
September 14, 2015

Location Identification No.	Time	Latitude	Longitude	Total Organic Carbon (ppm)	Hydrogen Sulfide (ppm)
1	12:26:24	35.1841	-106.5988	0	0
2	12:26:29	35.1840	-106.5988	0	0
3	12:26:34	35.1839	-106.5988	0	0
4	12:26:39	35.1839	-106.5989	0	0
5	12:26:44	35.1838	-106.5989	0	0
6	12:26:49	35.1837	-106.5989	0	0
7	12:26:54	35.1837	-106.5989	0	0
8	12:26:59	35.1836	-106.5990	0	0
9	12:27:04	35.1836	-106.5990	0	0
10	12:27:09	35.1835	-106.5990	0	0
11	12:27:14	35.1834	-106.5990	0	0
12	12:27:19	35.1834	-106.5991	0	0
13	12:27:24	35.1833	-106.5991	0	0
14	12:27:29	35.1833	-106.5991	0	0
15	12:27:34	35.1832	-106.5991	0	0
16	12:27:39	35.1832	-106.5991	0	0
17	12:27:44	35.1831	-106.5992	0	0
18	12:27:49	35.1830	-106.5992	0	0
19	12:27:54	35.1830	-106.5992	0	0
20	12:27:59	35.1829	-106.5993	0	0
21	12:28:04	35.1828	-106.5993	0	0
22	12:28:09	35.1828	-106.5993	0	0
23	12:28:14	35.1827	-106.5993	0	0
24	12:28:19	35.1827	-106.5994	0	0
25	12:28:24	35.1826	-106.5994	0	0
26	12:28:29	35.1825	-106.5994	0	0
27	12:28:34	35.1825	-106.5995	0	0
28	12:28:39	35.1824	-106.5995	0	0
29	12:28:44	35.1823	-106.5995	0	0
30	12:28:50	35.1823	-106.5995	0	0
31	12:28:55	35.1822	-106.5996	0	0
32	12:29:00	35.1821	-106.5996	0	0
33	12:29:05	35.1821	-106.5996	0	0
34	12:29:10	35.1820	-106.5996	0	0
35	12:29:15	35.1819	-106.5997	0	0
36	12:29:20	35.1819	-106.5997	0	0
37	12:29:25	35.1818	-106.5997	0	0
38	12:29:30	35.1817	-106.5997	0	0
39	12:29:35	35.1817	-106.5998	0	0

FORMER LOS ANGELES LANDFILL
Albuquerque International Balloon Fiesta Surface Emission Monitoring
September 14, 2015

Location Identification No.	Time	Latitude	Longitude	Total Organic Carbon (ppm)	Hydrogen Sulfide (ppm)
40	12:29:40	35.1816	-106.5998	0	0
41	12:29:45	35.1815	-106.5998	0	0
42	12:29:50	35.1815	-106.5998	0	0
43	12:29:55	35.1814	-106.5999	0	0
44	12:30:00	35.1814	-106.5999	0	0
45	12:30:05	35.1813	-106.5999	0	0
46	12:30:10	35.1812	-106.6000	0	0
47	12:30:15	35.1812	-106.6000	0	0
48	12:30:20	35.1811	-106.6000	0	0
49	12:30:25	35.1811	-106.6001	0	0
50	12:30:30	35.1810	-106.6001	0	0
51	12:30:35	35.1809	-106.6001	0	0
52	12:30:40	35.1809	-106.6002	0	0
53	12:30:45	35.1808	-106.6002	0	0
54	12:30:50	35.1807	-106.6002	0	0
55	12:30:55	35.1807	-106.6002	0	0
56	12:31:00	35.1806	-106.6002	0	0
57	12:31:05	35.1806	-106.6002	0	0
58	12:31:10	35.1805	-106.6003	0	0
59	12:31:15	35.1804	-106.6003	0	0
60	12:31:20	35.1803	-106.6003	0	0
61	12:31:25	35.1803	-106.6003	0	0
62	12:31:30	35.1802	-106.6003	0	0
63	12:31:35	35.1801	-106.6004	0	0
64	12:31:40	35.1800	-106.6004	0	0
65	12:31:45	35.1800	-106.6004	0	0
66	12:31:50	35.1799	-106.6004	0	0
67	12:31:55	35.1798	-106.6005	0	0
68	12:32:01	35.1798	-106.6005	0	0
69	12:32:06	35.1797	-106.6005	0	0
70	12:32:11	35.1796	-106.6005	0.1	0
71	12:32:16	35.1796	-106.6006	1.6	0
72	12:32:21	35.1795	-106.6006	0.1	0
73	12:32:26	35.1794	-106.6006	0.1	0
74	12:32:31	35.1794	-106.6006	0	0
75	12:32:36	35.1793	-106.6007	2.3	0
76	12:32:41	35.1792	-106.6007	1.5	0
77	12:32:46	35.1791	-106.6007	0.6	0
78	12:32:51	35.1791	-106.6008	1	0

FORMER LOS ANGELES LANDFILL
Albuquerque International Balloon Fiesta Surface Emission Monitoring
September 14, 2015

Location Identification No.	Time	Latitude	Longitude	Total Organic Carbon (ppm)	Hydrogen Sulfide (ppm)
79	12:32:56	35.1790	-106.6008	1.6	0
80	12:33:01	35.1790	-106.6008	0	0
81	12:33:06	35.1789	-106.6008	0	0
82	12:33:11	35.1788	-106.6009	0	0
83	12:33:16	35.1788	-106.6009	0	0
84	12:33:21	35.1787	-106.6009	0	0
85	12:33:26	35.1786	-106.6009	0	0
86	12:33:31	35.1786	-106.6010	0	0
87	12:33:36	35.1785	-106.6010	0	0
88	12:33:41	35.1784	-106.6010	0	0
89	12:33:46	35.1784	-106.6011	0	0
90	12:33:51	35.1783	-106.6011	0	0
91	12:33:56	35.1782	-106.6011	0	0
92	12:34:01	35.1782	-106.6011	0	0
93	12:34:06	35.1781	-106.6011	0	0
94	12:34:11	35.1780	-106.6012	0	0
95	12:34:16	35.1780	-106.6012	0	0
96	12:34:21	35.1779	-106.6012	0	0
97	12:34:26	35.1778	-106.6013	0	0
98	12:34:32	35.1778	-106.6013	0	0
99	12:34:37	35.1777	-106.6013	0	0
100	12:34:42	35.1776	-106.6014	0	0
101	12:34:47	35.1775	-106.6014	0	0
102	12:34:52	35.1775	-106.6014	0	0
103	12:34:57	35.1774	-106.6015	0	0
104	12:35:02	35.1774	-106.6015	0	0
105	12:35:07	35.1773	-106.6016	0	0
106	12:35:12	35.1773	-106.6017	0	0
107	12:35:17	35.1773	-106.6017	0	0
108	12:35:22	35.1773	-106.6018	0	0
109	12:35:27	35.1773	-106.6019	0	0
110	12:35:32	35.1773	-106.6020	0	0
111	12:35:37	35.1773	-106.6021	0	0
112	12:35:42	35.1773	-106.6021	0	0
113	12:35:47	35.1772	-106.6021	0	0.1
114	12:35:52	35.1773	-106.6021	0	0
115	12:35:57	35.1773	-106.6021	0	0
116	12:36:02	35.1773	-106.6021	0	0
117	12:36:07	35.1773	-106.6021	0	0

FORMER LOS ANGELES LANDFILL
Albuquerque International Balloon Fiesta Surface Emission Monitoring
September 14, 2015

Location Identification No.	Time	Latitude	Longitude	Total Organic Carbon (ppm)	Hydrogen Sulfide (ppm)
118	12:36:12	35.1773	-106.6021	0	0
119	12:36:17	35.1773	-106.6021	0	0
120	12:36:23	35.1773	-106.6021	0	0
121	12:36:28	35.1773	-106.6021	0	0
122	12:36:33	35.1773	-106.6021	0	0
123	12:36:38	35.1773	-106.6021	0	0
124	12:36:43	35.1773	-106.6021	0	0
125	12:36:48	35.1773	-106.6021	0	0
126	12:36:53	35.1773	-106.6021	0	0
127	12:36:58	35.1773	-106.6021	0	0
128	12:37:03	35.1773	-106.6021	0	0
129	12:37:08	35.1773	-106.6021	0	0
130	12:37:13	35.1773	-106.6021	0	0
131	12:37:18	35.1773	-106.6021	0	0
132	12:37:23	35.1773	-106.6021	0	0
133	12:37:28	35.1773	-106.6022	0	0
134	12:37:33	35.1773	-106.6022	0	0
135	12:37:38	35.1773	-106.6022	0	0
136	12:37:43	35.1773	-106.6022	0	0
137	12:37:48	35.1773	-106.6021	0	0
138	12:37:53	35.1774	-106.6021	0	0
139	12:37:58	35.1775	-106.6021	0	0
140	12:38:03	35.1775	-106.6021	0	0
141	12:38:08	35.1776	-106.6021	0	0
142	12:38:13	35.1776	-106.6021	0	0
143	12:38:18	35.1777	-106.6021	0	0
144	12:38:23	35.1778	-106.6021	0	0
145	12:38:28	35.1779	-106.6020	0	0
146	12:38:33	35.1779	-106.6020	0	0
147	12:38:38	35.1780	-106.6020	0	0
148	12:38:43	35.1781	-106.6020	0	0
149	12:38:48	35.1781	-106.6020	0	0
150	12:38:53	35.1782	-106.6019	0	0
151	12:38:58	35.1783	-106.6019	0	0
152	12:39:03	35.1783	-106.6019	0	0
153	12:39:08	35.1784	-106.6019	0	0
154	12:39:13	35.1785	-106.6019	0	0
155	12:39:18	35.1786	-106.6018	0	0
156	12:39:23	35.1786	-106.6018	0	0

FORMER LOS ANGELES LANDFILL
Albuquerque International Balloon Fiesta Surface Emission Monitoring
September 14, 2015

Location Identification No.	Time	Latitude	Longitude	Total Organic Carbon (ppm)	Hydrogen Sulfide (ppm)
157	12:39:28	35.1787	-106.6018	0	0
158	12:39:33	35.1787	-106.6018	7	0
159	12:39:39	35.1788	-106.6018	10	0
160	12:39:44	35.1788	-106.6017	15.2	0
161	12:39:49	35.1789	-106.6017	18.4	0
162	12:39:54	35.1789	-106.6017	5	0
163	12:39:59	35.1790	-106.6017	1.5	0
164	12:40:04	35.1790	-106.6017	2.1	0
165	12:40:09	35.1790	-106.6017	0.7	0
166	12:40:14	35.1790	-106.6017	0	0
167	12:40:19	35.1790	-106.6016	0	0
168	12:40:24	35.1791	-106.6016	0	0
169	12:40:29	35.1792	-106.6016	0	0
170	12:40:34	35.1792	-106.6016	0	0
171	12:40:39	35.1793	-106.6016	0	0
172	12:40:44	35.1793	-106.6016	0	0
173	12:40:49	35.1794	-106.6016	0	0
174	12:40:54	35.1795	-106.6015	0	0
175	12:40:59	35.1796	-106.6015	0	0
176	12:41:04	35.1796	-106.6015	0	0
177	12:41:09	35.1797	-106.6015	0	0
178	12:41:14	35.1797	-106.6015	0	0
179	12:41:19	35.1798	-106.6014	0	0
180	12:41:24	35.1799	-106.6014	0	0
181	12:41:29	35.1800	-106.6014	0	0
182	12:41:34	35.1800	-106.6014	0	0
183	12:41:40	35.1801	-106.6013	0	0
184	12:41:45	35.1802	-106.6013	0	0
185	12:41:50	35.1802	-106.6013	0	0
186	12:41:55	35.1803	-106.6013	0	0
187	12:42:00	35.1804	-106.6013	0	0
188	12:42:05	35.1805	-106.6012	0	0
189	12:42:10	35.1805	-106.6012	0	0
190	12:42:15	35.1806	-106.6012	0	0
191	12:42:20	35.1806	-106.6012	0	0
192	12:42:25	35.1807	-106.6012	0	0
193	12:42:30	35.1808	-106.6011	0	0
194	12:42:35	35.1809	-106.6011	0	0
195	12:42:40	35.1809	-106.6011	0	0

FORMER LOS ANGELES LANDFILL
Albuquerque International Balloon Fiesta Surface Emission Monitoring
September 14, 2015

Location Identification No.	Time	Latitude	Longitude	Total Organic Carbon (ppm)	Hydrogen Sulfide (ppm)
196	12:42:45	35.1810	-106.6011	0	0
197	12:42:50	35.1811	-106.6011	0	0
198	12:42:55	35.1812	-106.6010	0	0
199	12:43:00	35.1812	-106.6010	0	0
200	12:43:05	35.1813	-106.6010	0	0
201	12:43:10	35.1813	-106.6010	0	0
202	12:43:15	35.1814	-106.6010	0	0
203	12:43:20	35.1815	-106.6009	0	0
204	12:43:25	35.1815	-106.6009	0	0
205	12:43:30	35.1816	-106.6009	0	0
206	12:43:36	35.1817	-106.6009	0	0
207	12:43:41	35.1818	-106.6008	0	0
208	12:43:46	35.1818	-106.6008	0	0
209	12:43:51	35.1819	-106.6008	0	0
210	12:43:56	35.1820	-106.6008	0	0
211	12:44:01	35.1820	-106.6008	0	0
212	12:44:06	35.1821	-106.6008	0	0
213	12:44:11	35.1822	-106.6007	0	0
214	12:44:16	35.1823	-106.6007	0	0
215	12:44:21	35.1823	-106.6007	0	0
216	12:44:26	35.1824	-106.6006	0	0
217	12:44:31	35.1825	-106.6006	0	0
218	12:44:36	35.1826	-106.6006	0	0
219	12:44:41	35.1826	-106.6006	0	0
220	12:44:46	35.1827	-106.6005	0	0
221	12:44:51	35.1827	-106.6005	0	0
222	12:44:56	35.1828	-106.6005	0	0
223	12:45:01	35.1829	-106.6005	0	0
224	12:45:06	35.1830	-106.6004	0	0
225	12:45:12	35.1830	-106.6004	0	0
226	12:45:17	35.1831	-106.6004	0	0
227	12:45:22	35.1831	-106.6004	0	0
228	12:45:27	35.1832	-106.6004	0	0
229	12:45:32	35.1833	-106.6003	0	0
230	12:45:37	35.1833	-106.6003	0	0
231	12:45:42	35.1834	-106.6003	0	0
232	12:45:47	35.1835	-106.6003	0	0
233	12:45:52	35.1835	-106.6003	0	0
234	12:45:57	35.1836	-106.6003	0	0

FORMER LOS ANGELES LANDFILL
Albuquerque International Balloon Fiesta Surface Emission Monitoring
September 14, 2015

Location Identification No.	Time	Latitude	Longitude	Total Organic Carbon (ppm)	Hydrogen Sulfide (ppm)
235	12:46:02	35.1836	-106.6002	0	0
236	12:46:07	35.1837	-106.6002	0	0
237	12:46:13	35.1838	-106.6002	0	0
238	12:46:19	35.1838	-106.6001	0	0
239	12:46:25	35.1839	-106.6001	0	0
240	12:46:33	35.1840	-106.6001	0	0
241	12:46:38	35.1841	-106.6001	0	0
242	12:46:43	35.1842	-106.6000	0	0
243	12:46:48	35.1842	-106.6000	0	0
244	12:46:54	35.1843	-106.6000	0	0
245	12:46:59	35.1843	-106.6000	0	0
246	12:47:04	35.1843	-106.6000	0	0
247	12:47:09	35.1843	-106.6000	0	0
248	12:47:14	35.1843	-106.6000	0	0
249	12:47:19	35.1843	-106.6000	0	0
250	12:47:25	35.1843	-106.6000	0	0
251	12:47:30	35.1843	-106.6000	0	0
252	12:47:35	35.1843	-106.6000	0	0
253	12:47:40	35.1843	-106.6000	0	0
254	12:47:46	35.1843	-106.6000	0	0
255	12:47:53	35.1843	-106.6000	0	0
256	12:47:59	35.1843	-106.6000	0	0
257	12:48:06	35.1843	-106.6000	0	0
258	12:48:11	35.1843	-106.6000	0	0
259	12:48:16	35.1843	-106.6000	0	0
260	12:48:21	35.1843	-106.6000	0	0
261	12:48:26	35.1843	-106.6000	0	0
262	12:48:31	35.1843	-106.6000	0	0
263	12:48:36	35.1843	-106.6000	0	0
264	12:48:41	35.1843	-106.6000	0	0
265	12:48:46	35.1844	-106.6000	0	0
266	12:48:51	35.1844	-106.6000	0	0
267	12:48:56	35.1844	-106.6000	0	0
268	12:49:01	35.1843	-106.6000	0	0
269	12:49:06	35.1843	-106.6000	0	0
270	12:49:11	35.1843	-106.6001	0	0
271	12:49:16	35.1843	-106.6001	0	0
272	12:49:21	35.1843	-106.6002	0	0
273	12:49:26	35.1843	-106.6003	0	0

FORMER LOS ANGELES LANDFILL
Albuquerque International Balloon Fiesta Surface Emission Monitoring
September 14, 2015

Location Identification No.	Time	Latitude	Longitude	Total Organic Carbon (ppm)	Hydrogen Sulfide (ppm)
274	12:49:31	35.1843	-106.6004	0	0
275	12:49:36	35.1843	-106.6005	0	0
276	12:49:41	35.1843	-106.6006	0	0
277	12:49:46	35.1843	-106.6006	0	0
278	12:49:51	35.1843	-106.6007	0	0
279	12:49:56	35.1843	-106.6007	0	0
280	12:50:01	35.1843	-106.6007	0	0
281	12:50:06	35.1842	-106.6007	0	0
282	12:50:11	35.1841	-106.6007	0	0
283	12:50:16	35.1840	-106.6007	0	0
284	12:50:21	35.1840	-106.6008	0	0
285	12:50:26	35.1839	-106.6008	0	0
286	12:50:31	35.1839	-106.6008	0	0
287	12:50:36	35.1838	-106.6008	0	0
288	12:50:41	35.1837	-106.6008	0	0
289	12:50:46	35.1837	-106.6008	0	0
290	12:50:51	35.1836	-106.6009	0	0
291	12:50:56	35.1835	-106.6009	0	0
292	12:51:01	35.1835	-106.6009	0	0
293	12:51:06	35.1834	-106.6009	0	0
294	12:51:11	35.1833	-106.6009	0	0
295	12:51:16	35.1832	-106.6010	0	0
296	12:51:21	35.1832	-106.6010	0	0
297	12:51:26	35.1831	-106.6010	0	0
298	12:51:32	35.1831	-106.6010	0	0
299	12:51:37	35.1830	-106.6010	0	0
300	12:51:42	35.1829	-106.6010	0	0
301	12:51:47	35.1829	-106.6011	0	0
302	12:51:52	35.1828	-106.6011	0	0
303	12:51:57	35.1827	-106.6011	0	0
304	12:52:02	35.1827	-106.6011	0	0
305	12:52:07	35.1826	-106.6012	0	0
306	12:52:12	35.1825	-106.6012	0	0
307	12:52:17	35.1824	-106.6012	0	0
308	12:52:22	35.1824	-106.6012	0	0
309	12:52:27	35.1823	-106.6012	0	0
310	12:52:32	35.1822	-106.6013	0	0
311	12:52:37	35.1822	-106.6013	0	0
312	12:52:42	35.1821	-106.6013	0	0

FORMER LOS ANGELES LANDFILL
Albuquerque International Balloon Fiesta Surface Emission Monitoring
September 14, 2015

Location Identification No.	Time	Latitude	Longitude	Total Organic Carbon (ppm)	Hydrogen Sulfide (ppm)
313	12:52:47	35.1820	-106.6013	0	0
314	12:52:52	35.1820	-106.6013	0	0
315	12:52:57	35.1819	-106.6014	0	0
316	12:53:02	35.1818	-106.6014	0	0
317	12:53:07	35.1817	-106.6014	0	0
318	12:53:12	35.1817	-106.6014	0	0
319	12:53:17	35.1816	-106.6014	0	0
320	12:53:22	35.1815	-106.6014	0	0
321	12:53:27	35.1814	-106.6015	0	0
322	12:53:32	35.1814	-106.6015	0	0
323	12:53:37	35.1813	-106.6015	0	0
324	12:53:42	35.1812	-106.6015	0	0
325	12:53:47	35.1811	-106.6015	0	0
326	12:53:52	35.1811	-106.6016	0	0
327	12:53:57	35.1810	-106.6016	0	0
328	12:54:02	35.1810	-106.6016	0	0
329	12:54:07	35.1809	-106.6016	0	0
330	12:54:13	35.1808	-106.6017	0	0
331	12:54:18	35.1808	-106.6017	0	0
332	12:54:23	35.1807	-106.6017	0	0
333	12:54:28	35.1806	-106.6017	0	0
334	12:54:33	35.1805	-106.6017	0	0
335	12:54:38	35.1805	-106.6018	0	0
336	12:54:43	35.1804	-106.6018	0	0
337	12:54:48	35.1803	-106.6018	0	0
338	12:54:53	35.1803	-106.6018	0	0
339	12:54:58	35.1802	-106.6018	0	0
340	12:55:03	35.1801	-106.6018	0	0
341	12:55:08	35.1800	-106.6019	0	0
342	12:55:13	35.1800	-106.6019	0	0
343	12:55:18	35.1799	-106.6019	0	0
344	12:55:23	35.1799	-106.6019	0	0
345	12:55:28	35.1798	-106.6019	0	0
346	12:55:33	35.1797	-106.6019	0	0
347	12:55:38	35.1796	-106.6020	0	0
348	12:55:43	35.1796	-106.6020	0	0
349	12:55:48	35.1795	-106.6020	0	0
350	12:55:53	35.1795	-106.6020	0	0
351	12:55:58	35.1794	-106.6020	0	0

FORMER LOS ANGELES LANDFILL
Albuquerque International Balloon Fiesta Surface Emission Monitoring
September 14, 2015

Location Identification No.	Time	Latitude	Longitude	Total Organic Carbon (ppm)	Hydrogen Sulfide (ppm)
352	12:56:03	35.1793	-106.6020	0	0
353	12:56:08	35.1792	-106.6021	0	0
354	12:56:14	35.1792	-106.6021	0	0
355	12:56:19	35.1792	-106.6021	0	0
356	12:56:24	35.1792	-106.6021	0	0
357	12:56:29	35.1791	-106.6021	0	0
358	12:56:34	35.1791	-106.6022	0	0
359	12:56:39	35.1791	-106.6022	0	0
360	12:56:44	35.1791	-106.6022	0	0
361	12:56:49	35.1791	-106.6022	0	0
362	12:56:55	35.1791	-106.6022	0	0
363	12:57:00	35.1791	-106.6022	0	0
364	12:57:05	35.1791	-106.6022	3	0
365	12:57:10	35.1791	-106.6022	5.5	0
366	12:57:15	35.1791	-106.6022	2.3	0
367	12:57:20	35.1790	-106.6022	0	0
368	12:57:25	35.1789	-106.6022	13.7	0
369	12:57:30	35.1789	-106.6022	25.8	0
370	12:57:35	35.1788	-106.6022	0.6	0
371	12:57:40	35.1787	-106.6023	1.2	0
372	12:57:45	35.1787	-106.6023	0	0
373	12:57:50	35.1786	-106.6023	0	0
374	12:57:55	35.1785	-106.6023	0	0
375	12:58:00	35.1785	-106.6023	0	0
376	12:58:05	35.1784	-106.6023	0	0
377	12:58:10	35.1783	-106.6024	0	0
378	12:58:15	35.1783	-106.6024	0	0
379	12:58:20	35.1782	-106.6024	0	0
380	12:58:25	35.1781	-106.6024	0	0
381	12:58:30	35.1780	-106.6024	0	0
382	12:58:35	35.1780	-106.6024	0	0
383	12:58:40	35.1779	-106.6024	0	0
384	12:58:45	35.1778	-106.6024	0	0
385	12:58:50	35.1778	-106.6024	0	0
386	12:58:55	35.1777	-106.6025	0	0
387	12:59:00	35.1777	-106.6025	0	0
388	12:59:05	35.1776	-106.6025	0	0
389	12:59:10	35.1776	-106.6025	0	0
390	12:59:15	35.1775	-106.6025	0	0

FORMER LOS ANGELES LANDFILL
Albuquerque International Balloon Fiesta Surface Emission Monitoring
September 14, 2015

Location Identification No.	Time	Latitude	Longitude	Total Organic Carbon (ppm)	Hydrogen Sulfide (ppm)
391	12:59:20	35.1775	-106.6026	0	0
392	12:59:25	35.1774	-106.6026	0	0
393	12:59:30	35.1773	-106.6026	0	0
394	12:59:36	35.1773	-106.6026	0	0
395	12:59:41	35.1772	-106.6027	0	0
396	12:59:46	35.1772	-106.6027	0	0
397	12:59:51	35.1771	-106.6027	0	0
398	12:59:56	35.1771	-106.6027	0	0
399	13:00:01	35.1770	-106.6028	0	0
400	13:00:06	35.1770	-106.6028	0	0
401	13:00:11	35.1770	-106.6029	0	0
402	13:00:16	35.1770	-106.6029	0	0
403	13:00:21	35.1770	-106.6030	0	0
404	13:00:26	35.1770	-106.6031	0	0
405	13:00:31	35.1770	-106.6032	0	0
406	13:00:36	35.1770	-106.6032	0	0
407	13:00:41	35.1770	-106.6033	0	0
408	13:00:46	35.1770	-106.6034	0	0
409	13:00:51	35.1770	-106.6034	0	0
410	13:00:56	35.1770	-106.6034	0	0
411	13:01:01	35.1770	-106.6034	0	0
412	13:01:06	35.1770	-106.6035	0	0
413	13:01:11	35.1770	-106.6035	0	0
414	13:01:16	35.1770	-106.6035	0	0
415	13:01:21	35.1770	-106.6035	0	0
416	13:01:26	35.1770	-106.6035	0	0
417	13:01:31	35.1770	-106.6035	0	0
418	13:01:36	35.1770	-106.6035	0	0
419	13:01:41	35.1770	-106.6035	0	0
420	13:01:46	35.1771	-106.6035	0	0
421	13:01:51	35.1771	-106.6035	0	0
422	13:01:56	35.1771	-106.6035	0	0
423	13:02:02	35.1771	-106.6035	0	0
424	13:02:07	35.1771	-106.6035	0	0
425	13:02:12	35.1771	-106.6035	0	0
426	13:02:17	35.1771	-106.6035	0	0
427	13:02:22	35.1771	-106.6035	0	0
428	13:02:27	35.1771	-106.6035	0	0
429	13:02:32	35.1771	-106.6035	0	0

FORMER LOS ANGELES LANDFILL
Albuquerque International Balloon Fiesta Surface Emission Monitoring
September 14, 2015

Location Identification No.	Time	Latitude	Longitude	Total Organic Carbon (ppm)	Hydrogen Sulfide (ppm)
430	13:02:37	35.1771	-106.6034	0	0
431	13:02:42	35.1771	-106.6034	0	0
432	13:02:47	35.1771	-106.6034	0	0
433	13:02:52	35.1771	-106.6035	0	0
434	13:02:57	35.1771	-106.6034	0	0
435	13:03:02	35.1771	-106.6034	0	0
436	13:03:07	35.1772	-106.6034	0	0
437	13:03:12	35.1773	-106.6034	0	0
438	13:03:17	35.1773	-106.6034	0	0
439	13:03:22	35.1774	-106.6033	0	0
440	13:03:27	35.1775	-106.6033	0	0
441	13:03:32	35.1776	-106.6033	0	0
442	13:03:37	35.1776	-106.6033	0	0
443	13:03:42	35.1777	-106.6033	0	0
444	13:03:47	35.1777	-106.6032	0	0
445	13:03:52	35.1778	-106.6032	0	0
446	13:03:57	35.1779	-106.6032	0	0
447	13:04:02	35.1779	-106.6032	0	0
448	13:04:07	35.1780	-106.6032	0	0
449	13:04:12	35.1781	-106.6031	0	0
450	13:04:17	35.1782	-106.6031	0	0
451	13:04:22	35.1782	-106.6031	0	0
452	13:04:27	35.1783	-106.6031	0	0
453	13:04:33	35.1783	-106.6031	0	0
454	13:04:38	35.1784	-106.6031	0	0
455	13:04:43	35.1784	-106.6031	0	0
456	13:04:48	35.1785	-106.6030	0	0
457	13:04:53	35.1785	-106.6030	0	0
458	13:04:58	35.1785	-106.6030	0	0
459	13:05:03	35.1785	-106.6030	0	0
460	13:05:08	35.1786	-106.6030	0	0
461	13:05:13	35.1786	-106.6030	0	0
462	13:05:18	35.1786	-106.6030	0	0
463	13:05:23	35.1786	-106.6030	0	0
464	13:05:28	35.1786	-106.6030	0	0
465	13:05:33	35.1786	-106.6030	0	0
466	13:05:38	35.1786	-106.6030	0	0
467	13:05:43	35.1786	-106.6030	0	0
468	13:05:48	35.1786	-106.6030	0	0

FORMER LOS ANGELES LANDFILL
Albuquerque International Balloon Fiesta Surface Emission Monitoring
September 14, 2015

Location Identification No.	Time	Latitude	Longitude	Total Organic Carbon (ppm)	Hydrogen Sulfide (ppm)
469	13:05:53	35.1786	-106.6030	0	0
470	13:05:58	35.1786	-106.6030	0	0
471	13:06:03	35.1786	-106.6030	0	0
472	13:06:08	35.1786	-106.6030	0	0
473	13:06:13	35.1786	-106.6030	0	0
474	13:06:18	35.1786	-106.6030	0	0
475	13:06:23	35.1786	-106.6030	0	0
476	13:06:28	35.1786	-106.6030	0	0
477	13:06:33	35.1786	-106.6030	0	0
478	13:06:38	35.1786	-106.6030	0	0
479	13:06:43	35.1786	-106.6030	0	0
480	13:06:48	35.1786	-106.6030	0	0
481	13:06:53	35.1786	-106.6030	0	0
482	13:06:58	35.1786	-106.6030	0	0
483	13:07:03	35.1786	-106.6030	0	0
484	13:07:09	35.1787	-106.6030	0	0
485	13:07:14	35.1787	-106.6030	0	0
486	13:07:19	35.1788	-106.6030	0	0
487	13:07:24	35.1788	-106.6030	0	0
488	13:07:29	35.1789	-106.6030	0	0
489	13:07:34	35.1790	-106.6029	0	0
490	13:07:39	35.1791	-106.6029	0	0
491	13:07:44	35.1791	-106.6029	0	0
492	13:07:49	35.1792	-106.6028	0	0
493	13:07:54	35.1792	-106.6028	0	0
494	13:07:59	35.1791	-106.6027	0	0
495	13:08:04	35.1791	-106.6027	0	0
496	13:08:09	35.1791	-106.6026	0	0
497	13:08:14	35.1791	-106.6026	0	0
498	13:08:19	35.1792	-106.6025	0	0
499	13:08:24	35.1792	-106.6025	0	0
500	13:08:29	35.1793	-106.6025	0	0
501	13:08:34	35.1793	-106.6025	0	0
502	13:08:39	35.1794	-106.6025	0	0
503	13:08:44	35.1795	-106.6025	0	0
504	13:08:49	35.1796	-106.6025	0	0
505	13:08:54	35.1796	-106.6026	0	0
506	13:08:59	35.1797	-106.6026	0	0
507	13:09:04	35.1797	-106.6026	0	0

FORMER LOS ANGELES LANDFILL
Albuquerque International Balloon Fiesta Surface Emission Monitoring
September 14, 2015

Location Identification No.	Time	Latitude	Longitude	Total Organic Carbon (ppm)	Hydrogen Sulfide (ppm)
508	13:09:09	35.1798	-106.6026	0	0
509	13:09:14	35.1799	-106.6025	0	0
510	13:09:19	35.1799	-106.6025	0	0
511	13:09:24	35.1800	-106.6025	0	0
512	13:09:30	35.1800	-106.6025	0	0
513	13:09:35	35.1801	-106.6025	0	0
514	13:09:40	35.1802	-106.6025	0	0
515	13:09:45	35.1803	-106.6025	0	0
516	13:09:50	35.1803	-106.6025	0	0
517	13:09:55	35.1804	-106.6024	0	0
518	13:10:00	35.1804	-106.6024	0	0
519	13:10:05	35.1805	-106.6024	0	0
520	13:10:10	35.1806	-106.6024	0	0
521	13:10:15	35.1807	-106.6024	0	0
522	13:10:20	35.1807	-106.6024	0	0
523	13:10:25	35.1808	-106.6023	0	0
524	13:10:30	35.1808	-106.6023	0	0
525	13:10:35	35.1809	-106.6023	0	0
526	13:10:40	35.1810	-106.6023	0	0
527	13:10:45	35.1811	-106.6023	0	0
528	13:10:50	35.1811	-106.6023	0	0
529	13:10:55	35.1812	-106.6022	0	0
530	13:11:00	35.1812	-106.6022	0	0
531	13:11:05	35.1813	-106.6022	0	0
532	13:11:10	35.1814	-106.6022	0	0
533	13:11:15	35.1815	-106.6022	0	0
534	13:11:20	35.1815	-106.6022	0	0
535	13:11:25	35.1816	-106.6021	0	0
536	13:11:30	35.1816	-106.6021	0	0
537	13:11:35	35.1817	-106.6021	0	0
538	13:11:40	35.1818	-106.6021	0	0
539	13:11:46	35.1818	-106.6020	0	0
540	13:11:51	35.1819	-106.6020	0	0
541	13:11:56	35.1820	-106.6020	0	0
542	13:12:01	35.1820	-106.6020	0	0
543	13:12:06	35.1821	-106.6020	0	0
544	13:12:11	35.1822	-106.6020	0	0
545	13:12:16	35.1823	-106.6019	0	0
546	13:12:21	35.1823	-106.6019	0	0

FORMER LOS ANGELES LANDFILL
Albuquerque International Balloon Fiesta Surface Emission Monitoring
September 14, 2015

Location Identification No.	Time	Latitude	Longitude	Total Organic Carbon (ppm)	Hydrogen Sulfide (ppm)
547	13:12:26	35.1824	-106.6019	0	0
548	13:12:31	35.1825	-106.6019	0	0
549	13:12:36	35.1825	-106.6019	0	0
550	13:12:41	35.1826	-106.6018	0	0
551	13:12:46	35.1826	-106.6018	0	0
552	13:12:51	35.1827	-106.6018	0	0
553	13:12:56	35.1828	-106.6018	0	0
554	13:13:01	35.1828	-106.6018	0	0
555	13:13:06	35.1829	-106.6018	0	0
556	13:13:11	35.1829	-106.6018	0	0
557	13:13:16	35.1829	-106.6018	0	0
558	13:13:21	35.1829	-106.6018	0	0
559	13:13:26	35.1829	-106.6018	0	0
560	13:13:31	35.1829	-106.6018	0	0
561	13:13:36	35.1830	-106.6017	0	0
562	13:13:41	35.1830	-106.6017	0	0
563	13:13:46	35.1831	-106.6017	0	0
564	13:13:51	35.1832	-106.6017	0	0
565	13:13:56	35.1832	-106.6017	0	0
566	13:14:01	35.1833	-106.6017	0	0
567	13:14:06	35.1834	-106.6016	0	0
568	13:14:11	35.1834	-106.6016	0	0
569	13:14:16	35.1835	-106.6016	0	0
570	13:14:21	35.1836	-106.6016	0	0
571	13:14:26	35.1836	-106.6016	0	0
572	13:19:38	35.1838	-106.6015	0	0
573	13:19:43	35.1838	-106.6015	0.2	0
574	13:19:48	35.1838	-106.6015	0.2	0
575	13:19:53	35.1838	-106.6015	0.2	0
576	13:19:58	35.1838	-106.6015	0.2	0
577	13:20:03	35.1838	-106.6015	0.2	0
578	13:20:08	35.1838	-106.6015	0.3	0
579	13:20:13	35.1838	-106.6015	0.2	0
580	13:20:18	35.1838	-106.6015	0.2	0
581	13:20:23	35.1839	-106.6015	0.2	0
582	13:20:28	35.1839	-106.6015	0.2	0
583	13:20:33	35.1840	-106.6015	0.2	0
584	13:20:38	35.1841	-106.6015	0.2	0
585	13:20:43	35.1841	-106.6014	0.2	0

FORMER LOS ANGELES LANDFILL
Albuquerque International Balloon Fiesta Surface Emission Monitoring
September 14, 2015

Location Identification No.	Time	Latitude	Longitude	Total Organic Carbon (ppm)	Hydrogen Sulfide (ppm)
586	13:20:48	35.1841	-106.6014	0.2	0
587	13:20:53	35.1842	-106.6014	0.2	0
588	13:20:58	35.1843	-106.6014	0.2	0
589	13:21:03	35.1843	-106.6014	0.2	0
590	13:21:08	35.1843	-106.6014	0.2	0
591	13:21:13	35.1843	-106.6014	0.2	0
592	13:21:18	35.1842	-106.6014	0.2	0
593	13:21:23	35.1842	-106.6014	0.2	0
594	13:21:29	35.1842	-106.6015	0.2	0
595	13:21:34	35.1841	-106.6015	0.2	0
596	13:21:39	35.1840	-106.6015	0.2	0
597	13:21:44	35.1840	-106.6016	0.2	0
598	13:21:49	35.1839	-106.6016	0.2	0
599	13:21:54	35.1839	-106.6016	0.2	0
600	13:21:59	35.1838	-106.6016	0.2	0
601	13:22:04	35.1838	-106.6017	0.2	0
602	13:22:09	35.1837	-106.6017	0.2	0
603	13:22:14	35.1836	-106.6018	0.2	0
604	13:22:19	35.1836	-106.6018	0.2	0
605	13:22:24	35.1835	-106.6019	0.2	0
606	13:22:29	35.1835	-106.6019	0.2	0
607	13:22:34	35.1834	-106.6019	0.2	0
608	13:22:39	35.1833	-106.6019	0.2	0
609	13:22:44	35.1833	-106.6020	0.2	0
610	13:22:49	35.1832	-106.6020	0.2	0
611	13:22:54	35.1831	-106.6020	0.2	0
612	13:22:59	35.1831	-106.6021	0.2	0
613	13:23:04	35.1830	-106.6021	0.2	0
614	13:23:09	35.1830	-106.6021	0.2	0
615	13:23:14	35.1829	-106.6022	0.2	0
616	13:23:19	35.1829	-106.6023	0.2	0
617	13:23:24	35.1830	-106.6024	0.2	0
618	13:23:29	35.1830	-106.6024	0.2	0
619	13:23:34	35.1830	-106.6025	0.2	0
620	13:23:39	35.1830	-106.6025	0.2	0
621	13:23:44	35.1830	-106.6025	0.2	0
622	13:23:49	35.1830	-106.6025	0.2	0
623	13:23:54	35.1830	-106.6025	0.2	0
624	13:23:59	35.1830	-106.6025	0.2	0

FORMER LOS ANGELES LANDFILL
Albuquerque International Balloon Fiesta Surface Emission Monitoring
September 14, 2015

Location Identification No.	Time	Latitude	Longitude	Total Organic Carbon (ppm)	Hydrogen Sulfide (ppm)
625	13:24:04	35.1830	-106.6025	0.2	0
626	13:24:09	35.1830	-106.6025	0.2	0
627	13:24:14	35.1829	-106.6025	0.2	0
628	13:24:19	35.1828	-106.6025	0.2	0
629	13:24:24	35.1827	-106.6026	0.2	0
630	13:24:29	35.1827	-106.6026	0.2	0
631	13:24:34	35.1826	-106.6026	0.2	0
632	13:24:39	35.1826	-106.6026	0.2	0
633	13:24:44	35.1825	-106.6026	0.3	0
634	13:24:49	35.1825	-106.6026	0.3	0
635	13:24:54	35.1824	-106.6026	0.3	0
636	13:24:59	35.1824	-106.6026	0.3	0
637	13:25:04	35.1823	-106.6027	0.3	0
638	13:25:09	35.1822	-106.6027	0.3	0
639	13:25:15	35.1822	-106.6027	0.3	0
640	13:25:20	35.1821	-106.6027	0.3	0
641	13:25:25	35.1820	-106.6027	0.3	0
642	13:25:30	35.1820	-106.6027	0.3	0
643	13:25:35	35.1820	-106.6028	0.3	0
644	13:25:40	35.1819	-106.6028	0.3	0
645	13:25:45	35.1818	-106.6028	0.3	0
646	13:25:50	35.1817	-106.6028	0.3	0
647	13:25:55	35.1817	-106.6028	0.3	0
648	13:26:00	35.1816	-106.6028	0.3	0
649	13:26:05	35.1816	-106.6028	0.3	0
650	13:26:10	35.1815	-106.6029	0.3	0
651	13:26:15	35.1815	-106.6029	0.3	0
652	13:26:20	35.1814	-106.6029	0.3	0
653	13:26:25	35.1813	-106.6029	0.3	0
654	13:26:30	35.1813	-106.6029	0.3	0
655	13:26:35	35.1812	-106.6029	0.3	0
656	13:26:40	35.1812	-106.6030	0.3	0
657	13:26:45	35.1811	-106.6030	0.3	0
658	13:26:50	35.1810	-106.6030	0.3	0
659	13:26:55	35.1810	-106.6030	0.3	0
660	13:27:00	35.1809	-106.6030	0.3	0
661	13:27:05	35.1809	-106.6030	0.3	0
662	13:27:10	35.1808	-106.6031	0.3	0
663	13:27:15	35.1808	-106.6031	0.3	0

FORMER LOS ANGELES LANDFILL
Albuquerque International Balloon Fiesta Surface Emission Monitoring
September 14, 2015

Location Identification No.	Time	Latitude	Longitude	Total Organic Carbon (ppm)	Hydrogen Sulfide (ppm)
664	13:27:20	35.1807	-106.6031	0.3	0
665	13:27:25	35.1806	-106.6031	0.3	0
666	13:27:30	35.1806	-106.6031	0.3	0
667	13:27:35	35.1805	-106.6031	0.3	0
668	13:27:40	35.1805	-106.6031	0.3	0
669	13:27:45	35.1804	-106.6032	0.3	0
670	13:27:50	35.1803	-106.6032	0.3	0
671	13:27:55	35.1803	-106.6032	0.3	0
672	13:28:00	35.1802	-106.6032	0.3	0
673	13:28:05	35.1802	-106.6032	0.3	0
674	13:28:10	35.1801	-106.6033	0.3	0
675	13:28:15	35.1800	-106.6033	0.3	0
676	13:28:34	35.1799	-106.6033	0.3	0
677	13:28:39	35.1799	-106.6033	0.3	0
678	13:28:44	35.1798	-106.6034	0.3	0
679	13:28:49	35.1797	-106.6034	0.3	0
680	13:28:54	35.1797	-106.6034	0.3	0
681	13:28:59	35.1797	-106.6034	0.5	0
682	13:29:04	35.1797	-106.6034	0.2	0
683	13:29:09	35.1796	-106.6034	0.2	0
684	13:29:14	35.1796	-106.6034	0.3	0
685	13:29:19	35.1796	-106.6034	0.3	0
686	13:29:24	35.1795	-106.6034	0.3	0
687	13:29:29	35.1795	-106.6034	0.3	0
688	13:29:34	35.1795	-106.6034	0.3	0
689	13:29:39	35.1794	-106.6034	0.3	0
690	13:29:45	35.1794	-106.6034	0.3	0
691	13:29:50	35.1793	-106.6034	0.3	0
692	13:29:55	35.1793	-106.6035	0.3	0
693	13:30:00	35.1792	-106.6035	0.3	0
694	13:30:05	35.1792	-106.6035	0.3	0
695	13:30:10	35.1791	-106.6035	0.3	0
696	13:30:15	35.1790	-106.6035	0.3	0
697	13:30:20	35.1790	-106.6035	0.3	0
698	13:30:25	35.1789	-106.6035	0.3	0
699	13:30:30	35.1788	-106.6035	0.3	0
700	13:30:35	35.1788	-106.6036	0.3	0
701	13:30:40	35.1787	-106.6036	0.3	0
702	13:30:45	35.1787	-106.6036	0.3	0

FORMER LOS ANGELES LANDFILL
Albuquerque International Balloon Fiesta Surface Emission Monitoring
September 14, 2015

Location Identification No.	Time	Latitude	Longitude	Total Organic Carbon (ppm)	Hydrogen Sulfide (ppm)
703	13:30:50	35.1786	-106.6036	0.3	0
704	13:30:55	35.1785	-106.6037	0.3	0
705	13:31:00	35.1785	-106.6037	0.3	0
706	13:31:05	35.1784	-106.6037	0.3	0
707	13:31:10	35.1783	-106.6037	0.3	0
708	13:31:16	35.1782	-106.6038	0.3	0
709	13:31:21	35.1782	-106.6038	0.3	0
710	13:31:26	35.1781	-106.6038	0.3	0
711	13:31:31	35.1781	-106.6038	0.3	0
712	13:31:36	35.1780	-106.6038	0.3	0
713	13:31:41	35.1780	-106.6038	0.3	0
714	13:31:46	35.1779	-106.6039	0.3	0
715	13:31:51	35.1778	-106.6039	0.3	0
716	13:31:56	35.1778	-106.6039	0.3	0
717	13:32:01	35.1777	-106.6039	0.3	0
718	13:32:06	35.1776	-106.6039	0.2	0
719	13:32:11	35.1776	-106.6039	0.3	0
720	13:32:16	35.1775	-106.6040	0.3	0
721	13:32:21	35.1774	-106.6040	0.2	0
722	13:32:26	35.1774	-106.6040	0.3	0
723	13:32:31	35.1773	-106.6041	0.2	0
724	13:32:36	35.1773	-106.6041	0.1	0
725	13:32:41	35.1774	-106.6042	0.1	0
726	13:32:46	35.1774	-106.6043	0.1	0
727	13:32:51	35.1774	-106.6043	0.1	0
728	13:32:56	35.1775	-106.6044	0.1	0
729	13:33:01	35.1775	-106.6044	0.1	0
730	13:33:06	35.1776	-106.6045	0.1	0
731	13:33:11	35.1776	-106.6045	0.1	0
732	13:33:16	35.1776	-106.6045	0.1	0
733	13:33:21	35.1776	-106.6045	0	0
734	13:33:26	35.1776	-106.6045	0.1	0
735	13:33:31	35.1776	-106.6045	0.1	0
736	13:33:36	35.1776	-106.6046	0.1	0
737	13:33:42	35.1776	-106.6046	0.1	0
738	13:33:47	35.1776	-106.6046	0.1	0
739	13:33:52	35.1776	-106.6046	0.1	0
740	13:33:57	35.1776	-106.6046	0.1	0
741	13:34:02	35.1776	-106.6046	0.1	0

FORMER LOS ANGELES LANDFILL
Albuquerque International Balloon Fiesta Surface Emission Monitoring
September 14, 2015

Location Identification No.	Time	Latitude	Longitude	Total Organic Carbon (ppm)	Hydrogen Sulfide (ppm)
742	13:34:07	35.1776	-106.6046	0.1	0
743	13:34:12	35.1776	-106.6046	0	0
744	13:34:17	35.1776	-106.6046	0	0
745	13:34:22	35.1776	-106.6046	0	0
746	13:34:27	35.1776	-106.6046	0	0
747	13:34:32	35.1776	-106.6046	0	0
748	13:34:37	35.1776	-106.6046	0	0
749	13:34:42	35.1777	-106.6046	0	0
750	13:34:47	35.1777	-106.6045	0	0
751	13:34:52	35.1778	-106.6045	0	0
752	13:34:57	35.1778	-106.6045	0	0
753	13:35:02	35.1779	-106.6045	0	0
754	13:35:07	35.1780	-106.6045	0	0
755	13:35:12	35.1780	-106.6045	0	0
756	13:35:18	35.1781	-106.6045	0	0
757	13:35:23	35.1781	-106.6044	0	0
758	13:35:28	35.1782	-106.6044	0	0
759	13:35:33	35.1783	-106.6044	0	0
760	13:35:38	35.1783	-106.6044	0	0
761	13:35:43	35.1784	-106.6044	0	0
762	13:35:48	35.1785	-106.6044	0	0
763	13:35:53	35.1785	-106.6044	0	0
764	13:35:58	35.1786	-106.6044	0	0
765	13:36:03	35.1786	-106.6043	0	0
766	13:36:08	35.1787	-106.6043	0	0
767	13:36:13	35.1788	-106.6043	0	0
768	13:36:18	35.1788	-106.6043	0	0
769	13:36:23	35.1789	-106.6043	0	0
770	13:36:28	35.1789	-106.6042	0	0
771	13:36:33	35.1790	-106.6042	0	0
772	13:36:38	35.1791	-106.6042	0	0
773	13:36:43	35.1792	-106.6042	0	0
774	13:36:48	35.1792	-106.6042	0	0
775	13:36:53	35.1793	-106.6042	0	0
776	13:36:58	35.1793	-106.6042	0	0
777	13:37:03	35.1794	-106.6041	0	0
778	13:37:08	35.1795	-106.6041	0	0
779	13:37:13	35.1795	-106.6041	0	0
780	13:37:18	35.1796	-106.6041	0	0

FORMER LOS ANGELES LANDFILL
Albuquerque International Balloon Fiesta Surface Emission Monitoring
September 14, 2015

Location Identification No.	Time	Latitude	Longitude	Total Organic Carbon (ppm)	Hydrogen Sulfide (ppm)
781	13:37:23	35.1796	-106.6041	0	0
782	13:37:28	35.1797	-106.6041	0	0
783	13:37:33	35.1797	-106.6041	0	0
784	13:37:38	35.1798	-106.6040	0	0
785	13:37:43	35.1798	-106.6040	0	0
786	13:37:48	35.1798	-106.6040	0	0
787	13:37:53	35.1799	-106.6040	0	0
788	13:37:58	35.1799	-106.6040	0	0
789	13:38:03	35.1799	-106.6040	0	0
790	13:38:08	35.1798	-106.6040	0	0
791	13:38:13	35.1798	-106.6040	0.1	0
792	13:38:18	35.1799	-106.6040	0.2	0
793	13:38:23	35.1799	-106.6040	0.3	0
794	13:38:28	35.1799	-106.6040	0.3	0
795	13:38:33	35.1799	-106.6040	0.5	0
796	13:38:38	35.1799	-106.6040	0.5	0
797	13:38:43	35.1800	-106.6040	0.4	0
798	13:38:49	35.1801	-106.6039	0.3	0
799	13:38:54	35.1801	-106.6039	0.2	0
800	13:38:59	35.1802	-106.6039	0.2	0
801	13:39:04	35.1802	-106.6039	0.2	0
802	13:39:09	35.1803	-106.6039	0.1	0
803	13:39:14	35.1803	-106.6039	0.1	0
804	13:39:19	35.1804	-106.6039	0.1	0
805	13:39:24	35.1805	-106.6039	0	0
806	13:39:29	35.1805	-106.6038	0	0
807	13:39:34	35.1806	-106.6038	0	0
808	13:39:39	35.1807	-106.6038	0	0
809	13:39:44	35.1807	-106.6038	0	0
810	13:39:49	35.1808	-106.6038	0	0
811	13:39:54	35.1808	-106.6038	0	0
812	13:39:59	35.1809	-106.6037	0	0
813	13:40:04	35.1809	-106.6037	0	0
814	13:40:09	35.1810	-106.6037	0	0
815	13:40:14	35.1811	-106.6037	0	0
816	13:40:19	35.1811	-106.6037	0	0
817	13:40:24	35.1812	-106.6037	0	0
818	13:40:29	35.1812	-106.6036	0	0
819	13:40:34	35.1813	-106.6036	0	0

FORMER LOS ANGELES LANDFILL
Albuquerque International Balloon Fiesta Surface Emission Monitoring
September 14, 2015

Location Identification No.	Time	Latitude	Longitude	Total Organic Carbon (ppm)	Hydrogen Sulfide (ppm)
820	13:40:39	35.1814	-106.6036	0	0
821	13:40:44	35.1814	-106.6036	0	0
822	13:40:50	35.1815	-106.6036	0	0
823	13:40:55	35.1815	-106.6036	0	0
824	13:41:00	35.1816	-106.6035	0	0
825	13:41:05	35.1816	-106.6035	0	0
826	13:41:10	35.1817	-106.6035	0	0
827	13:41:15	35.1817	-106.6035	0	0
828	13:41:20	35.1818	-106.6035	0	0
829	13:41:25	35.1819	-106.6035	0	0
830	13:41:30	35.1819	-106.6035	0	0
831	13:41:35	35.1820	-106.6035	0	0
832	13:41:40	35.1820	-106.6034	0	0
833	13:41:45	35.1821	-106.6034	0	0
834	13:41:50	35.1822	-106.6034	0	0
835	13:41:55	35.1822	-106.6034	0	0
836	13:42:00	35.1823	-106.6034	0	0
837	13:42:05	35.1823	-106.6034	0	0
838	13:42:10	35.1824	-106.6034	0	0
839	13:42:15	35.1825	-106.6034	0	0
840	13:42:20	35.1825	-106.6033	0	0
841	13:42:25	35.1826	-106.6033	0	0
842	13:42:30	35.1827	-106.6033	0	0
843	13:42:35	35.1827	-106.6033	0	0
844	13:42:41	35.1828	-106.6032	0	0
845	13:42:46	35.1828	-106.6032	0	0
846	13:42:51	35.1829	-106.6032	0	0
847	13:42:56	35.1830	-106.6032	0	0
848	13:43:01	35.1830	-106.6033	0	0
849	13:43:06	35.1831	-106.6033	0	0
850	13:43:11	35.1831	-106.6033	0	0
851	13:43:16	35.1831	-106.6033	0	0
852	13:43:21	35.1831	-106.6033	0	0
853	13:43:26	35.1831	-106.6034	0	0
854	13:43:31	35.1832	-106.6034	0	0
855	13:43:36	35.1832	-106.6035	0	0
856	13:43:41	35.1832	-106.6036	0	0
857	13:43:46	35.1832	-106.6037	0	0
858	13:43:51	35.1832	-106.6038	0	0

FORMER LOS ANGELES LANDFILL
Albuquerque International Balloon Fiesta Surface Emission Monitoring
September 14, 2015

Location Identification No.	Time	Latitude	Longitude	Total Organic Carbon (ppm)	Hydrogen Sulfide (ppm)
859	13:43:56	35.1832	-106.6038	0	0
860	13:44:01	35.1832	-106.6039	0	0
861	13:44:06	35.1832	-106.6039	0	0
862	13:44:11	35.1832	-106.6039	0	0
863	13:44:17	35.1832	-106.6039	0	0
864	13:44:23	35.1832	-106.6039	0	0
865	13:44:29	35.1832	-106.6039	0	0
866	13:44:36	35.1832	-106.6039	0	0
867	13:44:43	35.1832	-106.6039	0	0
868	13:44:49	35.1832	-106.6039	0	0
869	13:44:55	35.1832	-106.6039	0	0
870	13:45:00	35.1832	-106.6039	0	0
871	13:45:06	35.1832	-106.6039	0	0
872	13:45:12	35.1832	-106.6039	0	0
873	13:45:17	35.1832	-106.6039	0	0
874	13:45:24	35.1832	-106.6039	0	0
875	13:45:30	35.1832	-106.6039	0	0
876	13:45:35	35.1832	-106.6039	0	0
877	13:45:40	35.1832	-106.6039	0	0
878	13:45:45	35.1832	-106.6039	0	0
879	13:45:50	35.1832	-106.6039	0	0
880	13:45:55	35.1832	-106.6039	0	0
881	13:46:00	35.1832	-106.6039	0	0
882	13:46:05	35.1831	-106.6039	0	0
883	13:46:10	35.1831	-106.6039	0	0
884	13:46:15	35.1830	-106.6039	0	0
885	13:46:20	35.1830	-106.6039	0	0
886	13:46:25	35.1829	-106.6040	0	0
887	13:46:30	35.1828	-106.6040	0	0
888	13:46:35	35.1828	-106.6040	0	0
889	13:46:40	35.1827	-106.6040	0	0
890	13:46:45	35.1827	-106.6040	0	0
891	13:46:50	35.1826	-106.6040	0	0
892	13:46:55	35.1826	-106.6041	0	0
893	13:47:00	35.1825	-106.6041	0	0
894	13:47:05	35.1824	-106.6041	0	0
895	13:47:10	35.1824	-106.6041	0	0
896	13:47:15	35.1823	-106.6041	0	0
897	13:47:20	35.1822	-106.6041	0	0

FORMER LOS ANGELES LANDFILL
Albuquerque International Balloon Fiesta Surface Emission Monitoring
September 14, 2015

Location Identification No.	Time	Latitude	Longitude	Total Organic Carbon (ppm)	Hydrogen Sulfide (ppm)
898	13:47:26	35.1822	-106.6041	0	0
899	13:47:31	35.1821	-106.6041	0	0
900	13:47:36	35.1820	-106.6041	0	0
901	13:47:41	35.1820	-106.6041	0	0
902	13:47:46	35.1819	-106.6042	0	0
903	13:47:51	35.1819	-106.6042	0	0
904	13:47:56	35.1818	-106.6042	0	0
905	13:48:01	35.1817	-106.6042	0	0
906	13:48:06	35.1816	-106.6042	0	0
907	13:48:11	35.1816	-106.6042	0	0
908	13:48:16	35.1815	-106.6042	0	0
909	13:48:21	35.1815	-106.6042	0	0
910	13:48:26	35.1814	-106.6043	0	0
911	13:48:31	35.1813	-106.6043	0	0
912	13:48:36	35.1813	-106.6043	0	0
913	13:48:41	35.1812	-106.6043	0	0
914	13:48:46	35.1811	-106.6043	0	0
915	13:48:51	35.1811	-106.6043	0	0
916	13:48:56	35.1810	-106.6043	0	0
917	13:49:01	35.1810	-106.6043	0	0
918	13:49:06	35.1809	-106.6043	0	0
919	13:49:11	35.1808	-106.6043	0	0
920	13:49:16	35.1807	-106.6044	0	0
921	13:49:21	35.1807	-106.6044	0	0
922	13:49:26	35.1806	-106.6044	0	0
923	13:49:32	35.1805	-106.6044	0	0
924	13:49:37	35.1805	-106.6044	0	0
925	13:49:42	35.1804	-106.6044	0	0
926	13:49:47	35.1804	-106.6044	0	0
927	13:49:52	35.1803	-106.6045	0	0
928	13:49:57	35.1803	-106.6045	0	0
929	13:50:02	35.1802	-106.6046	0	0
930	13:50:07	35.1801	-106.6046	0	0
931	13:50:12	35.1801	-106.6046	0	0
932	13:50:17	35.1801	-106.6046	0	0
933	13:50:22	35.1800	-106.6046	0	0
934	13:50:27	35.1800	-106.6046	0	0
935	13:50:32	35.1800	-106.6046	0	0
936	13:50:37	35.1799	-106.6046	0	0

FORMER LOS ANGELES LANDFILL
Albuquerque International Balloon Fiesta Surface Emission Monitoring
September 14, 2015

Location Identification No.	Time	Latitude	Longitude	Total Organic Carbon (ppm)	Hydrogen Sulfide (ppm)
937	13:50:42	35.1798	-106.6046	0	0
938	13:50:47	35.1798	-106.6046	0	0
939	13:50:52	35.1797	-106.6046	0	0
940	13:50:57	35.1797	-106.6046	0	0
941	13:51:02	35.1796	-106.6046	0	0
942	13:51:07	35.1796	-106.6046	0	0
943	13:51:12	35.1795	-106.6046	0	0
944	13:51:17	35.1794	-106.6047	0	0
945	13:51:22	35.1794	-106.6047	0	0
946	13:51:27	35.1793	-106.6047	0	0
947	13:51:32	35.1792	-106.6047	0	0
948	13:51:37	35.1792	-106.6047	0	0
949	13:51:42	35.1791	-106.6047	0	0
950	13:51:47	35.1790	-106.6047	0	0
951	13:51:52	35.1790	-106.6048	0	0
952	13:51:57	35.1789	-106.6048	0	0
953	13:52:02	35.1788	-106.6048	0	0
954	13:52:07	35.1788	-106.6048	0	0
955	13:52:12	35.1787	-106.6048	0	0
956	13:52:17	35.1787	-106.6048	0	0
957	13:52:22	35.1786	-106.6048	0	0
958	13:52:27	35.1785	-106.6048	0	0
959	13:52:33	35.1785	-106.6048	0	0
960	13:52:38	35.1784	-106.6049	0	0
961	13:52:43	35.1784	-106.6049	0	0
962	13:52:48	35.1784	-106.6049	0	0
963	13:52:53	35.1784	-106.6049	0	0
964	13:52:58	35.1784	-106.6049	0	0
965	13:53:03	35.1785	-106.6049	0	0
966	13:53:08	35.1785	-106.6049	0	0
967	13:53:13	35.1786	-106.6049	0	0
968	13:53:18	35.1787	-106.6049	0	0
969	13:53:23	35.1787	-106.6049	0	0
970	13:53:28	35.1788	-106.6049	0	0
971	13:53:33	35.1789	-106.6049	0	0
972	13:53:38	35.1789	-106.6049	0	0
973	13:53:43	35.1790	-106.6049	0	0
974	13:53:48	35.1790	-106.6049	0	0
975	13:53:53	35.1791	-106.6049	0	0

FORMER LOS ANGELES LANDFILL
Albuquerque International Balloon Fiesta Surface Emission Monitoring
September 14, 2015

Location Identification No.	Time	Latitude	Longitude	Total Organic Carbon (ppm)	Hydrogen Sulfide (ppm)
976	13:53:59	35.1792	-106.6049	0	0
977	13:54:04	35.1793	-106.6049	0	0
978	13:54:09	35.1794	-106.6049	0	0
979	13:54:14	35.1794	-106.6049	0	0
980	13:54:19	35.1795	-106.6049	0	0
981	13:54:24	35.1796	-106.6049	0	0
982	13:54:29	35.1796	-106.6049	0	0
983	13:54:34	35.1797	-106.6049	0	0
984	13:54:39	35.1798	-106.6049	0	0
985	13:54:44	35.1799	-106.6049	0	0
986	13:54:49	35.1799	-106.6049	0	0
987	13:54:54	35.1800	-106.6049	0	0
988	13:54:59	35.1801	-106.6049	0	0
989	13:55:04	35.1801	-106.6049	0	0
990	13:55:09	35.1802	-106.6049	0	0
991	13:55:14	35.1803	-106.6049	0	0
992	13:55:19	35.1804	-106.6049	0	0
993	13:55:24	35.1804	-106.6049	0	0
994	13:55:29	35.1805	-106.6049	0	0
995	13:55:34	35.1805	-106.6049	0	0
996	13:55:39	35.1806	-106.6049	0	0
997	13:55:44	35.1807	-106.6049	0	0
998	13:55:49	35.1808	-106.6049	0	0
999	13:55:54	35.1808	-106.6049	0	0
1000	13:55:59	35.1809	-106.6049	0	0
1001	13:56:04	35.1810	-106.6049	0	0
1002	13:56:10	35.1810	-106.6049	0	0
1003	13:56:15	35.1810	-106.6049	0	0
1004	13:56:20	35.1811	-106.6048	0	0
1005	13:56:25	35.1811	-106.6049	0	0
1006	13:56:30	35.1812	-106.6049	0	0
1007	13:56:35	35.1812	-106.6049	0	0
1008	13:56:40	35.1813	-106.6048	0	0
1009	13:56:45	35.1814	-106.6048	0	0
1010	13:56:50	35.1815	-106.6048	0	0
1011	13:56:55	35.1815	-106.6048	0	0
1012	13:57:00	35.1816	-106.6048	0	0
1013	13:57:06	35.1817	-106.6048	0	0
1014	13:57:11	35.1817	-106.6048	0	0

FORMER LOS ANGELES LANDFILL
Albuquerque International Balloon Fiesta Surface Emission Monitoring
September 14, 2015

Location Identification No.	Time	Latitude	Longitude	Total Organic Carbon (ppm)	Hydrogen Sulfide (ppm)
1015	13:57:16	35.1818	-106.6048	0	0
1016	13:57:21	35.1819	-106.6048	0	0
1017	13:57:26	35.1819	-106.6048	0	0
1018	13:57:31	35.1820	-106.6047	0	0
1019	13:57:36	35.1821	-106.6047	0	0
1020	13:57:41	35.1821	-106.6047	0	0
1021	13:57:46	35.1822	-106.6047	0	0
1022	13:57:51	35.1823	-106.6047	0	0
1023	13:57:56	35.1824	-106.6047	0	0
1024	13:58:01	35.1824	-106.6047	0	0
1025	13:58:07	35.1825	-106.6047	0	0
1026	13:58:12	35.1826	-106.6047	0	0
1027	13:58:17	35.1826	-106.6047	0	0
1028	13:58:22	35.1827	-106.6047	0	0
1029	13:58:27	35.1828	-106.6046	0	0
1030	13:58:32	35.1828	-106.6046	0	0
1031	13:58:37	35.1829	-106.6046	0	0
1032	13:58:42	35.1830	-106.6045	0	0
1033	13:58:47	35.1830	-106.6045	0	0
1034	13:58:52	35.1831	-106.6045	0	0
1035	13:58:57	35.1832	-106.6045	0	0
1036	13:59:02	35.1832	-106.6044	0	0
1037	13:59:07	35.1833	-106.6044	0	0
1038	13:59:13	35.1833	-106.6044	0	0

Notes:

- ppm = parts per million volumetric
- Total organic carbon readings have been normalized to background levels
- Total organic carbon readings were read with a flame ionizing detector calibrated to 500 ppm methane.
- Hydrogen sulfide was measured with a combustible gas indicator. The internal clock on the meter did not sync precisely with the FID, and the readings locations may be offset.