

Aquarium Resource Guide

At the ABQ BioPark

6th – 12th grade

**Albuquerque Biological Park
EDUCATION**



2601 Central NW * Albuquerque, NM 87104 * (505) 764-6200



Educational Activities

The Albuquerque Aquarium is home to approximately 3,000 aquatic animals from a variety of salt and freshwater habitats. The aquarium's theme follows a drop of water as it travels from the headwaters of the Rio Grande in Colorado to the Atlantic Ocean. A nine-minute film, "One River, Many Voices," introduces visitors to this journey. The aquarium offers a wonderful setting to teach about conservation and stewardship. By actually seeing a shark swim by, touching a crab, hearing the waves lapping the shore or smelling the mud flats, you experience the diversity of life. For teachers, the aquarium offers a chance to learn and teach in a non-traditional setting. The aquarium is a stimulating educational resource, with applications for many disciplines.

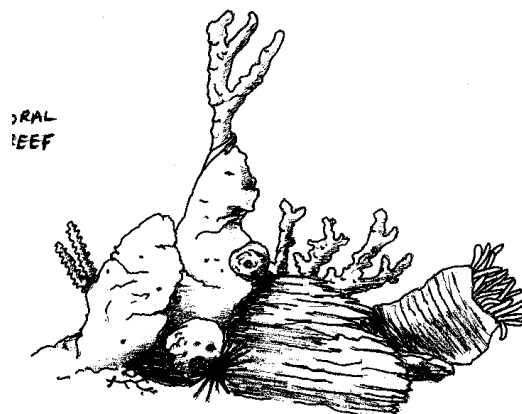
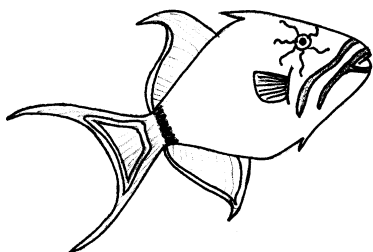
The following activities may be used during your visit to the Albuquerque Aquarium with your middle and high school students.

FISH OBSERVATIONS

Good observations can lead to a greater appreciation of the natural world. Making observations, collecting data and drawing conclusions are some of the best ways to learn about aquatic animals. This activity encourages students to slow down, examine a fish and study its physical features and behavior. After completing their workshop, can students describe the ways each fish is adapted to its habitat?

CONSERVATION FILL-IN AND WORD SEARCH

While visiting the aquarium, students can complete their fill-in worksheet by reading the Ocean Conservation panels near the exit. Not all answers will be direct quotations. Students will need to apply what they have read. The missing words are the same words in the word search.





FISH OBSERVATION 1

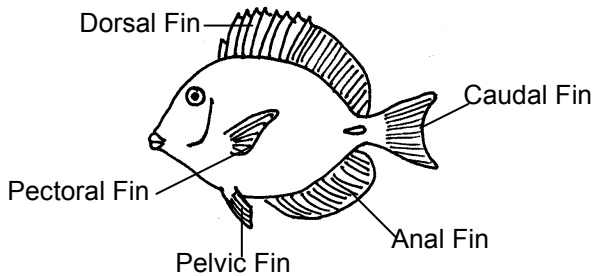
Choose a fish from the list below. Observe the fish for at least seven minutes.
Answer each question about your fish.

Sturgeon/Rio Grande Past
Moray eel/Eel cave
Lookdown/Coral reef
Squirrelfish/Inside the Wreck
Seahorse/Colorful Fish

Porcupinefish/Ocean
Cownose ray/Shallows & Shores
Sandbar shark/Ocean
Black durgon/Coral reef
Barracuda/Ocean

EXAMPLE

DRAW YOUR FISH BELOW.



Which fins does your fish use for forward movement? _____

Which fins does your fish use for turning? _____

Does your fish swim fast or slow or both? _____

What color/pattern is your fish? _____

What shape is your fish?

- Fusiform (torpedo shaped)
- Laterally compressed (thin sideways)
- Ribbon
- Depressed (flattened top to bottom)
- other: _____

Estimate the size of your fish. Is it small, measured in inches or long, measured in feet?

Look at the mouth of your fish. What do you think it eats? How does it eat?

Does your fish have any means of protection? (ex: camouflage, spines, sharp teeth, speed)

Describe your fish's behavior. _____

Is your fish solitary, in a mixed group or in a school? _____

Does your fish move around or stay in a certain area?

Describe the habitat of your fish.



CONSERVATION FILL IN

Read the interpretive panels near the exit to find the answers. You will find some answers directly on the panels, others will require you to think about what you have read. (The answers are the same words found in the word search.)



1. One way to reduce pollution is to ___ C ___ L ___.

2. We need to P _____ the ocean so future generations may enjoy it.

3. ___ E ___ L _____ S function as natural purifiers.



4. B ___ R _____ C ___ S and ___ U _____ protect coastal communities from storms and erosion.

5. _____ I ___ and M _____ L waste affect the ocean creatures as well as humans.

6. The majority of O ___ pollution is from spills or leaks that originate from land or rivers.

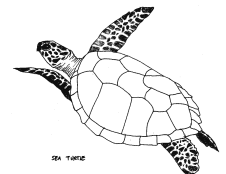
7. Animals choke or have their digestive system blocked by _____ O O ___ and ___ Y _____ A ___ when they mistake them for food.

8. ___ A ___ R ___ L ___ S, _____ R ___ S, and ___ H ___ E ___ that are caught in fishing nets by mistake are called ___ Y _____ C H.

9. Coastal D _____ P _____ T is a big factor in the destruction of ocean ___ B ___ A ___.

10. C _____ T ___ wetlands support more than 75% of the nation's commercial fish and shellfish.

11. Because of pollution, many of the ocean's creatures are now ___ N _____ E ___ E ___.

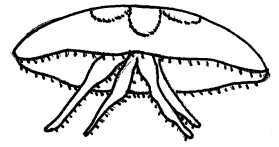


12. You can help ocean species by only eating ___ E ___ O ___ that was caught or _____ M ___ in a sustainable way.

13. Be ___ N _____ A ___ of ocean wildlife.



CONSERVATION WORD SEARCH



S	K	S	W	I	E	A	W	M	I	E	L	B	A	E	C	D	B	L	N	M
E	T	A	R	E	D	I	S	N	O	C	N	A	O	C	I	O	V	D	I	Y
A	D	A	S	I	H	L	D	U	N	E	S	R	J	W	D	O	R	E	T	F
B	E	W	H	L	U	I	L	O	K	O	D	R	A	N	H	F	C	I	N	M
I	R	C	O	A	C	E	D	S	P	E	K	I	U	C	I	A	O	E	U	E
R	S	D	N	A	L	T	E	W	V	H	E	E	S	E	R	E	L	D	Q	D
D	P	D	V	R	M	N	S	E	J	R	F	R	N	E	P	S	R	E	L	I
S	R	F	D	U	A	K	L	Q	E	K	Q	B	H	I	B	H	O	J	S	C
Y	O	E	Y	A	L	O	S	T	R	E	S	E	N	U	D	G	N	A	B	A
T	T	N	T	H	P	A	E	B	S	S	V	A	I	A	M	P	O	E	N	L
G	E	T	W	M	S	Y	A	R	E	C	Y	C	L	E	A	R	O	K	T	W
E	C	X	E	T	E	V	T	U	D	M	S	H	C	A	T	J	L	U	D	A
M	T	N	K	U	O	R	U	E	B	F	Y	E	M	H	K	O	L	Z	F	S
A	T	O	W	K	W	Z	R	N	T	Z	T	S	E	G	P	Z	A	D	F	T
I	V	O	X	R	M	E	T	A	I	A	G	N	L	H	T	E	B	R	A	E
S	I	N	D	I	G	A	L	R	O	B	Y	C	A	T	C	H	I	T	R	L
T	O	S	L	N	C	U	E	G	P	B	S	T	Y	R	O	F	O	A	M	H
R	R	P	A	E	R	W	S	K	H	J	K	R	E	D	E	A	M	I	E	V
O	A	D	F	B	A	H	A	Y	U	E	Q	E	S	G	C	E	S	B	D	L
H	N	E	A	C	Q	L	T	S	S	T	E	H	A	B	I	T	A	T	S	A
E	A	L	H	A	M	R	D	U	T	K	L	K	M	V	A	L	G	N	L	J
H	P	L	A	T	S	A	O	C	I	E	K	S	R	P	D	T	L	A	O	L
R	S	M	E	R	G	Q	X	E	V	T	S	L	I	O	M	O	E	M	E	A

BALLOONS
BARRIER BEACHES
BYCATCH
COASTAL
CONSIDERATE
DEVELOPMENT
ENDANGERED

FARMED
HABITATS
MEDICAL WASTE
OIL
PROTECT
RECYCLE
SEA BIRDS

SEAFOOD
SEA TURTLES
STYROFOAM
TOXIC WASTE
WETLANDS
WHALES

