

Family Art from Home

Yes, we can!

by Ophelia Cornet

CAN ACTIVISM is art made of recycled cans with a positive message. The art can be in the form of words, visual designs, or a combination of both. These elements can be nailed onto poles, wooden fences, or movable wooden panels. From my experience, you can expect well-nailed cans to last well over a year outdoors.

Note: If you are planning to nail can art onto PNM poles, they have asked that you leave two sides empty so that PNM workers can climb the poles easily.

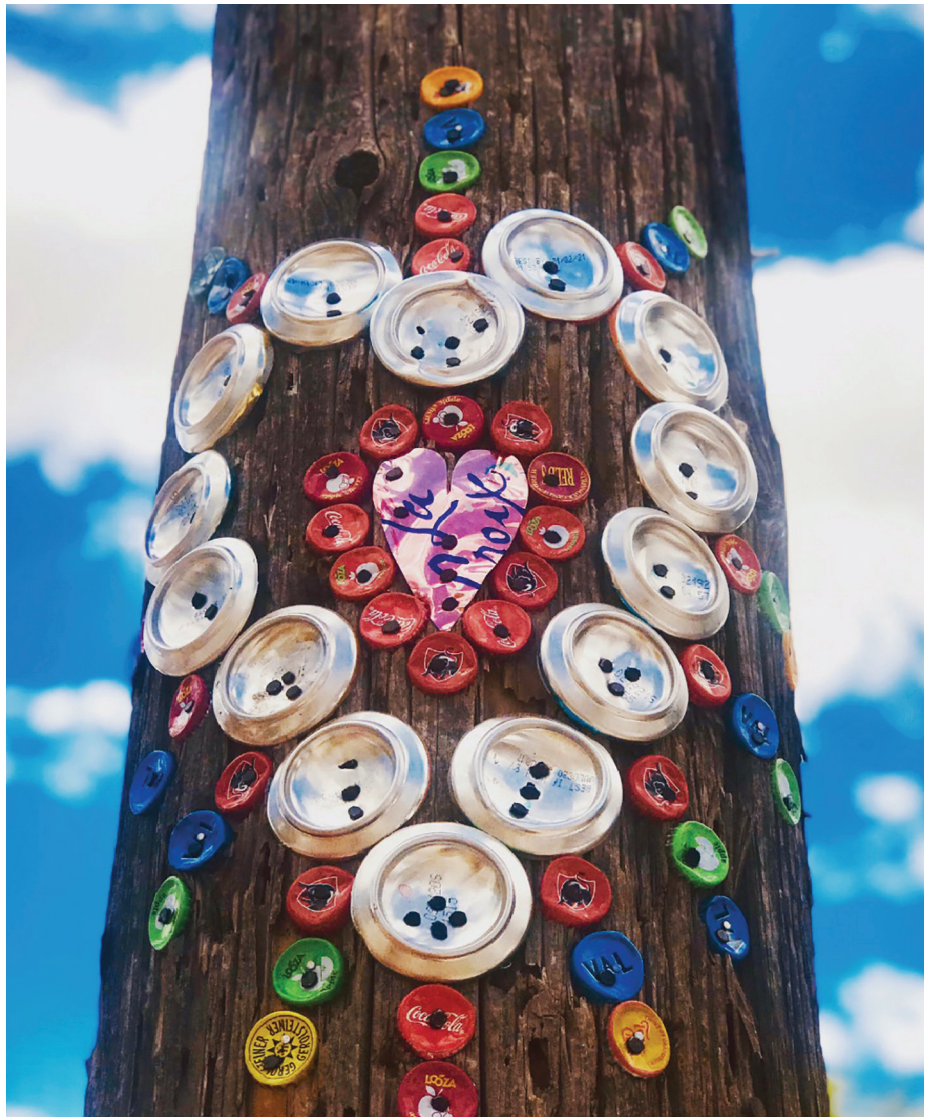
Supplies Needed

- Recycled cans (of which you can use the sides, bottoms, tops, and tabs)
- Bottle caps (both metal and plastic caps are a fun way to add detail)
- Nails with a flat head. The nails should be a minimum of one centimeter in length, though longer is better, especially if you are attaching onto a wooden pole
- Hammer
- Scissors
- Sharpie or marker
- Paper and pencil to draw out your design
- Gloves (optional)

How to Do It

1. This step is ideal for involving children and other family members in coming up with an attractive and meaningful message. What positive message resonates with your family?

On a large sheet of paper draw out possible designs. Keep it simple and make sure that your pieces are large enough for a bold and easy to read message (I recommend 2 inches across or more for your smallest pieces of tin).



Albuquerque Museum

2000 Mountain Road NW
Albuquerque, NM 87104

505-243-7255 • cabq.gov/museum

ONE
ALBUQUE
ROQUE cultural services

Step 2



2. This step should be for adults only. Gloves are recommended but not a must. Choose colors of cans that will contrast well with your background. Cut the top and bottom off of your empty cans to create a rectangular panel out of the center part of the can. Clean up any jagged edges with scissors and press the rectangle flat. While you're cutting the cans, remember to pull off the tabs in case you want to use them later.

3. Use a sharpie or a marker to draw your design freehand (for example, a flower petal) or trace from your paper design onto the BACK of the tin (the side with the color you don't want to show). Cut out the shapes.

4. Once you have all of your pieces, decide how the design will be laid out. Nail down the edges of the can pieces flat against the wood. I recommend spacing the nails about half an inch apart. Depending on the shape, you may use less or more space in between.

Additional Tips:

Bottle caps are great to use and you will only need one or two nails to attach them.

Using the bottom of cans is easy and reflects the light in a great way! Place three nails in the center!

You can also use the oval shape at the top of the can (which is punched out when you open the can to drink) for extra detail.

Enjoy your creative time together and remember: Power to the people!

Step 3

