

## Family Art from Home

# Gaudi's Tile Creatures

by Edén Resnik

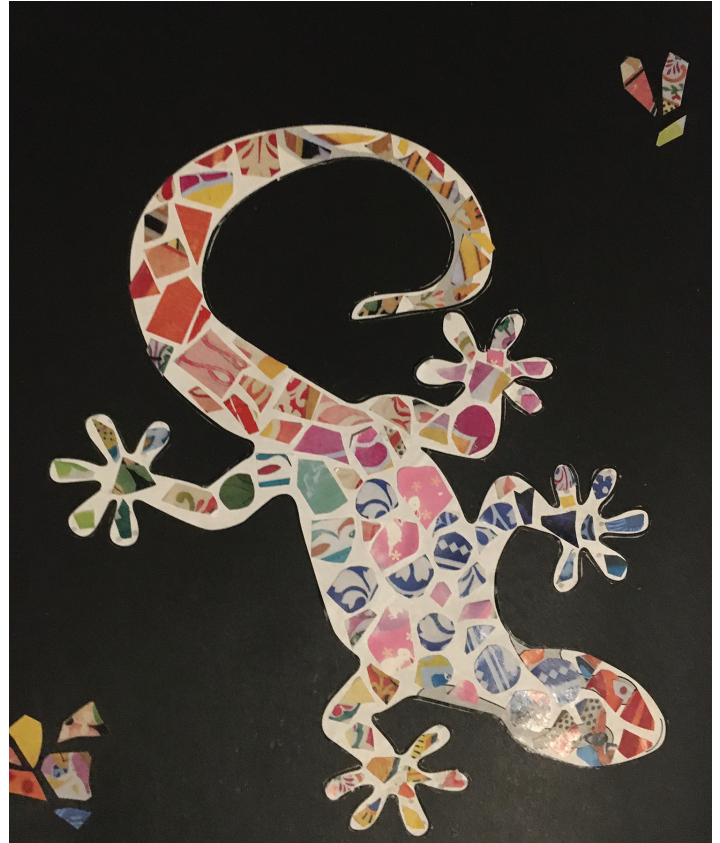
Antoni Gaudí was a Spanish architect born in 1852. He is known for the whimsical houses and other buildings he designed. One of his most recognizable works is *The Park Güell* in Barcelona, where he covered walls, sculptures, and houses in colorful tile. Because of the natural curves of his designs, he couldn't tile them normally and so he covered them in a mosaic of broken tiles. This project is inspired by his tile work.

### Supplies Needed

- Lizard template OR white paper and a black sharpie
- Tile sample sheets AND/OR magazines to cut from
- Scissors
- Glue stick
- Black construction paper

### How to do it

1. If you have a printer, print out the lizard and the colorful tile sample sheets.
2. If you would rather start from scratch, draw a large bold outline of an animal or object of your choice (see lizard template as an example). Use a black sharpie on white paper to do this. Find magazines with interesting colors and patterns to play with.
3. Cut out your animal or object and glue it onto the black construction paper. It is best to do this step first because once your tiles are on the shape it can be hard to cut.
4. Cut out your tiles. Notice on the template how they are a mix of straight edges and rounded ones, but are rarely perfect squares or rectangles. These are copies of the actual tile shards Gaudí used in his designs. With magazines, find colors and patterns and cut a variety of shapes and sizes from them.
5. Choose one place to start in your shape and glue your first tile down, making sure to cover the entire back of each tile with the glue stick.
6. From there, begin arranging the other tiles, leaving a small area of white between each one.
7. Try grouping similar colors together or fading into another color by using multi-colored tiles. If you need a certain size or shape of tile, you can cut that out too. You can also make patterns with your tiles.
8. To finish, you can add a few extra tiles onto your black construction paper to draw the eye around your piece if you wish (see final photo)



**Albuquerque Museum**  
2000 Mountain Road NW  
Albuquerque, NM 87104  
505-243-7255 • [cabq.gov/museum](http://cabq.gov/museum)

**ONE**  
**ALBUQUE**  
**RQUE** cultural services

