

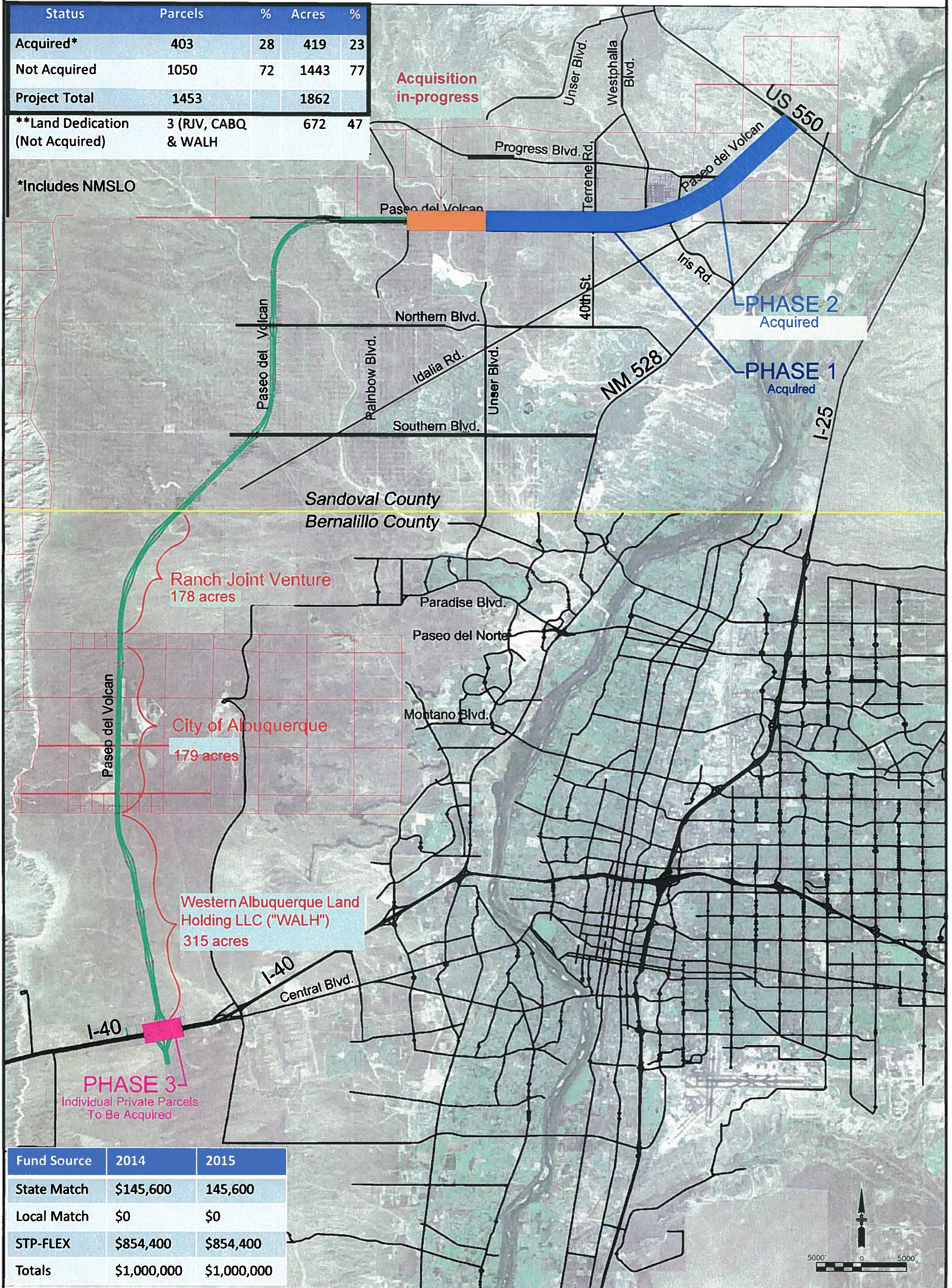
# Paseo del Volcan Right-of-Way

Acquisition Status

DECEMBER 2013

Status	Parcels	%	Acres	%
Acquired*	403	28	419	23
Not Acquired	1050	72	1443	77
<b>Project Total</b>	<b>1453</b>		<b>1862</b>	
**Land Dedication (Not Acquired)	3 (RJV, CABQ & WALH)		672	47

\*Includes NMSLO



Fund Source	2014	2015
State Match	\$145,600	145,600
Local Match	\$0	\$0
STP-FLEX	\$854,400	\$854,400
<b>Totals</b>	<b>\$1,000,000</b>	<b>\$1,000,000</b>