

# Juan Tabo Connectivity Study

Virtual Public Meeting #1

## Introductions

### City of Albuquerque

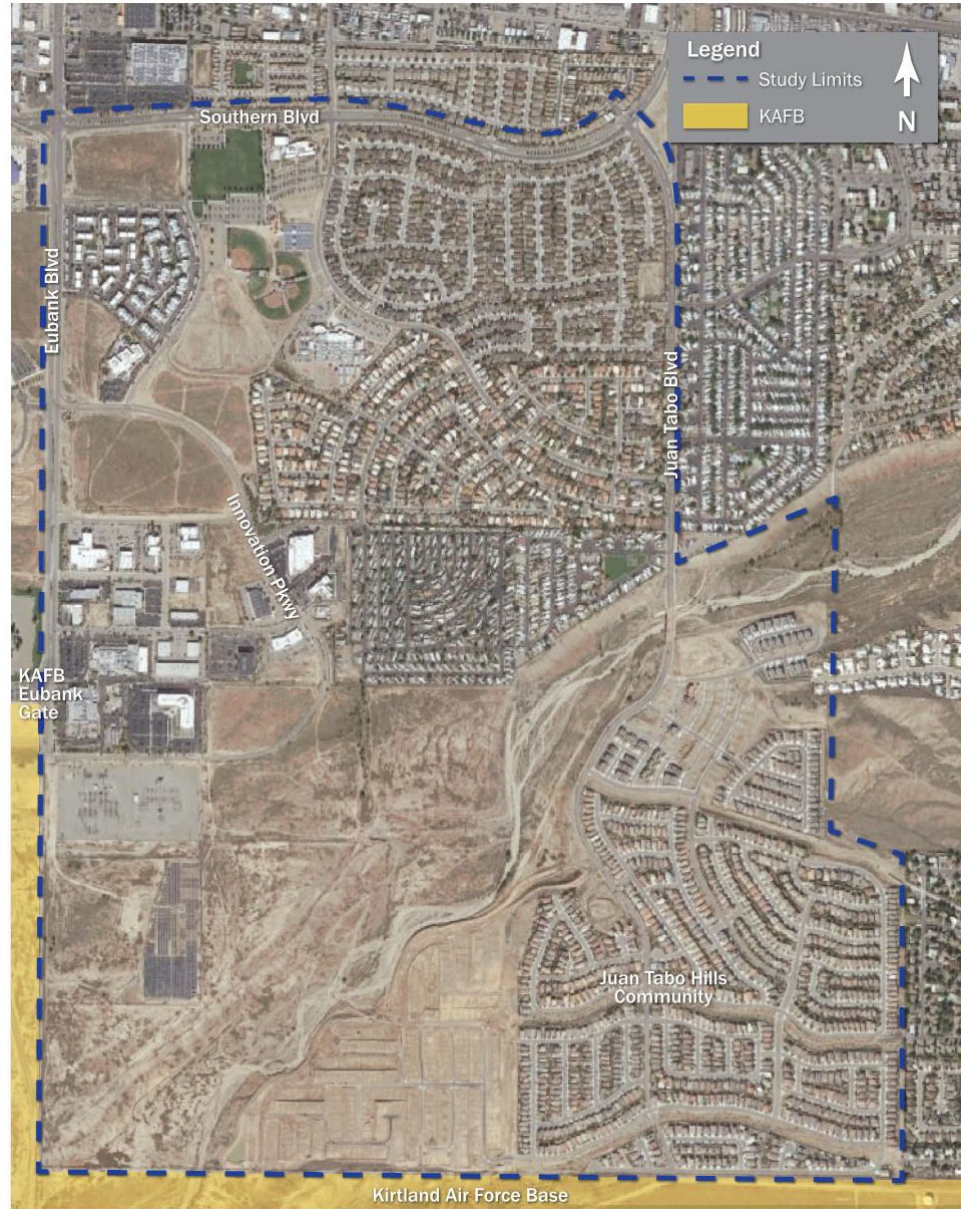
- Petra Morris, AICP – Council Planning Manager
- Melissa Lozoya, PE – DMD Deputy Director
- Tom Menicucci – City Council Policy Analyst
- Tim Brown, PE – Traffic Engineering Manager
- Laura Rummler – Councilor Harris Policy Analyst

### Wilson & Company

- Audra Gallegos, PE
- Ben Bachwirtz

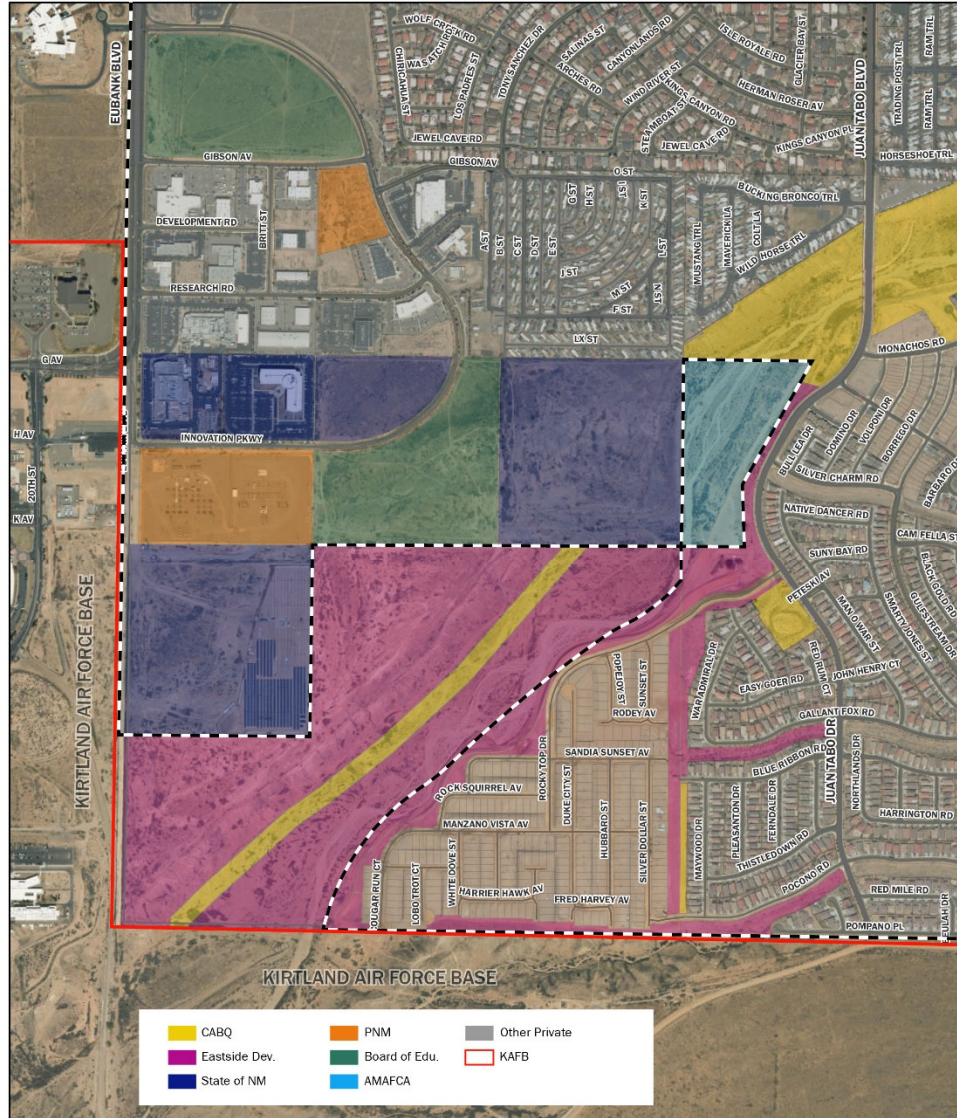
# Study Area

# Study Area



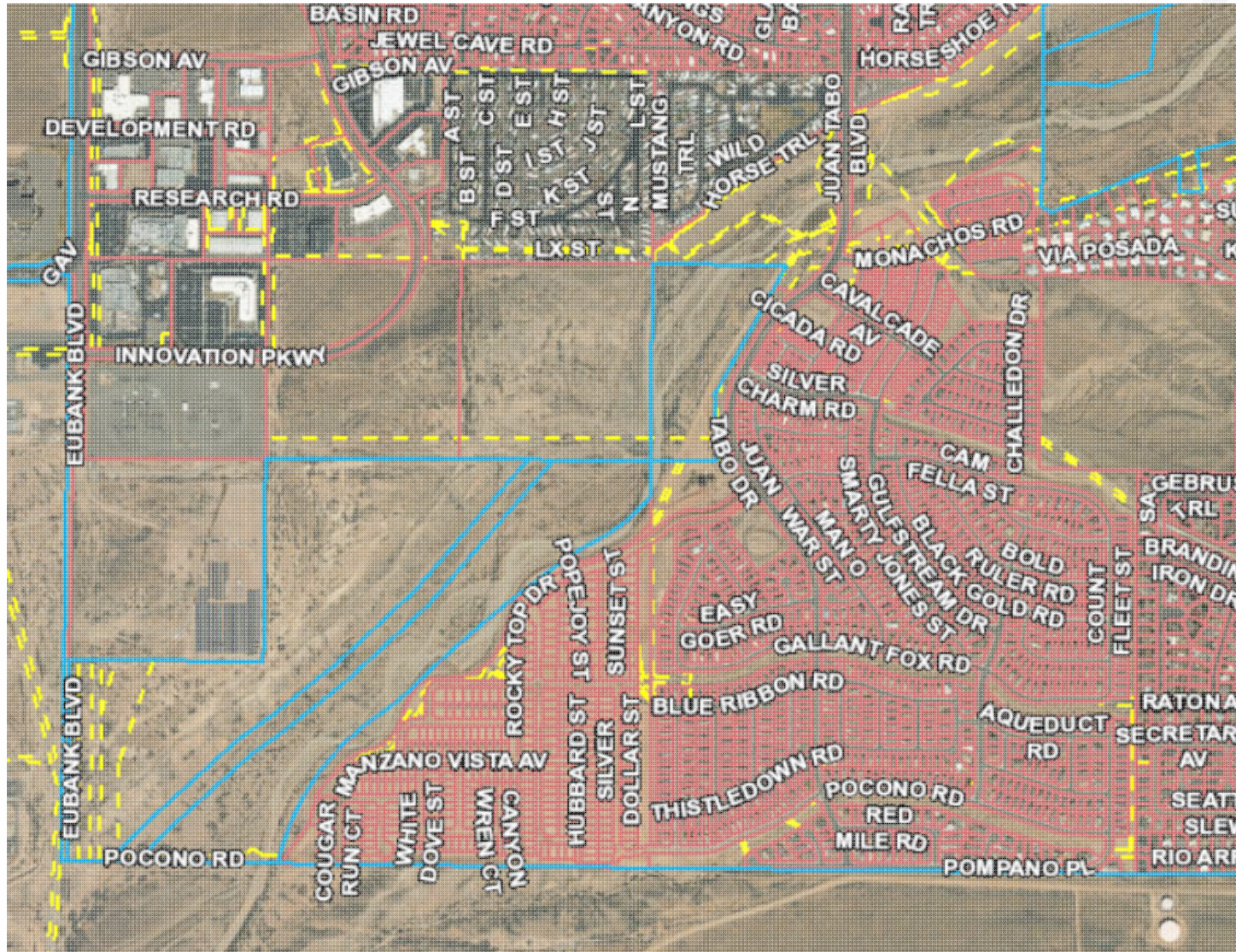


# Property Owners





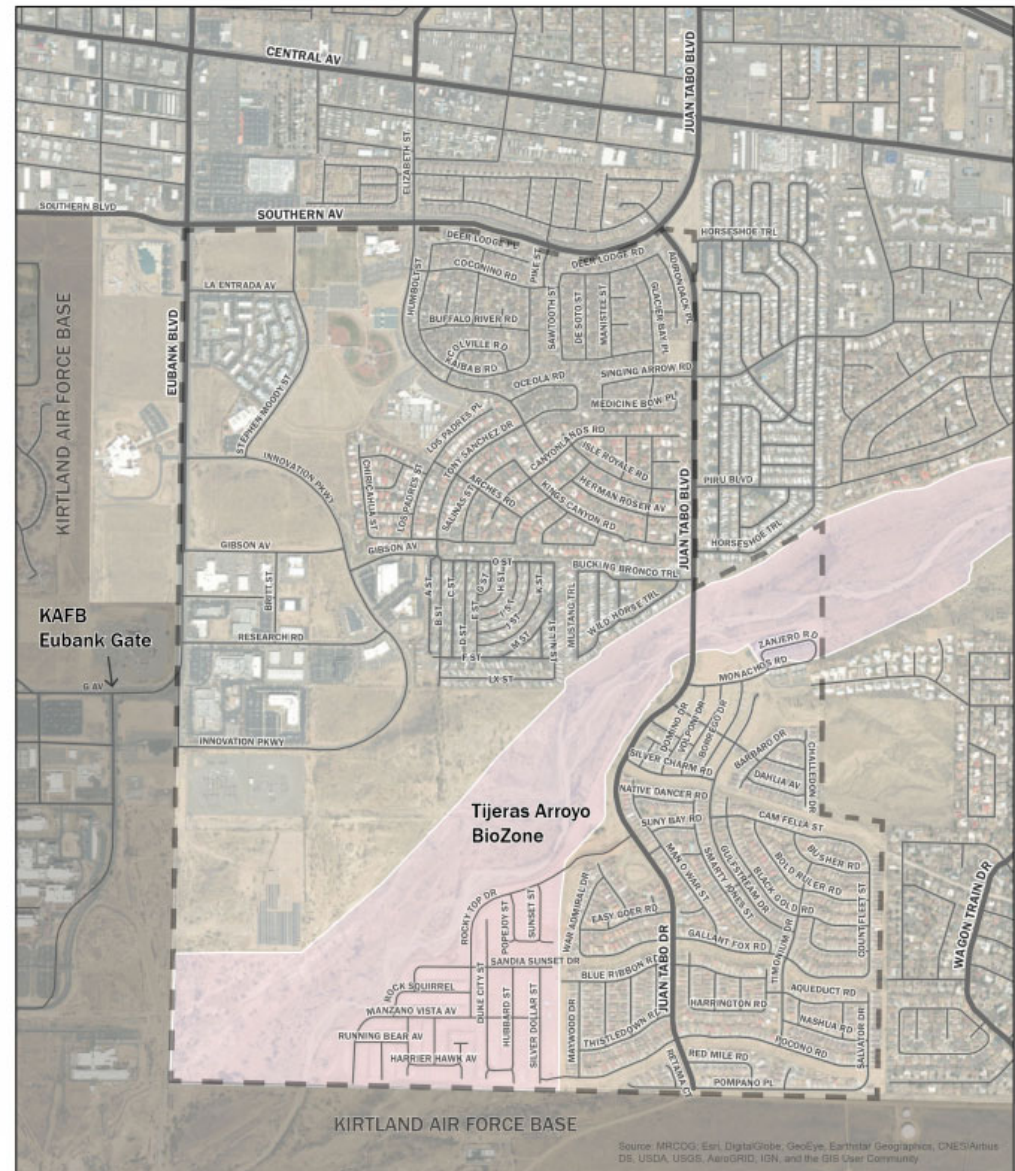
# Easements





## Tijeras Bio-Zone

- Bio-Zone – an area of high concentration of natural resources that are protected and preserved.
- City of Albuquerque Resource Management Plan for Tijeras Arroyo Biological Zone





# Old Landfill

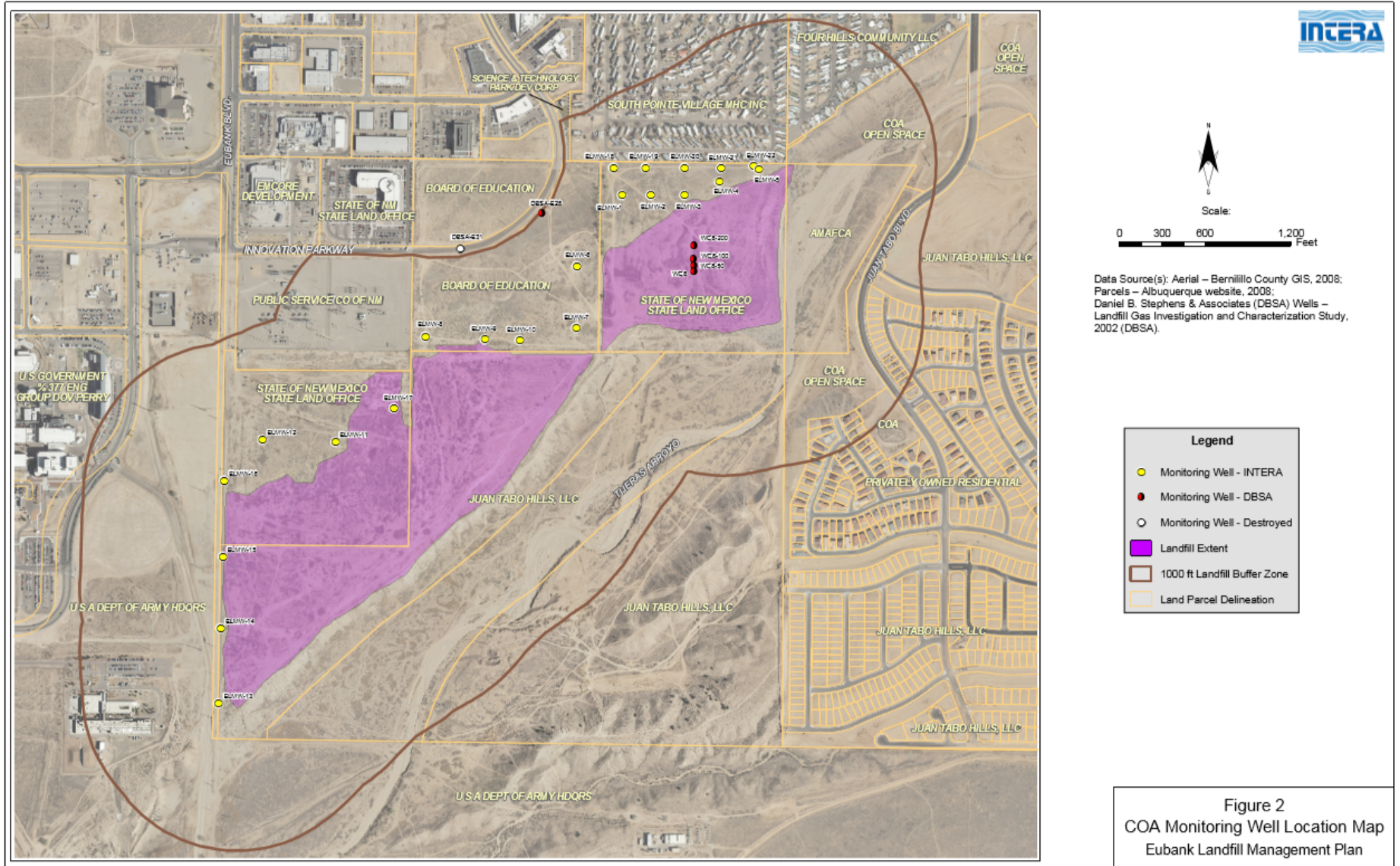


Figure 2  
COA Monitoring Well Location Map  
Eubank Landfill Management Plan

# Photos

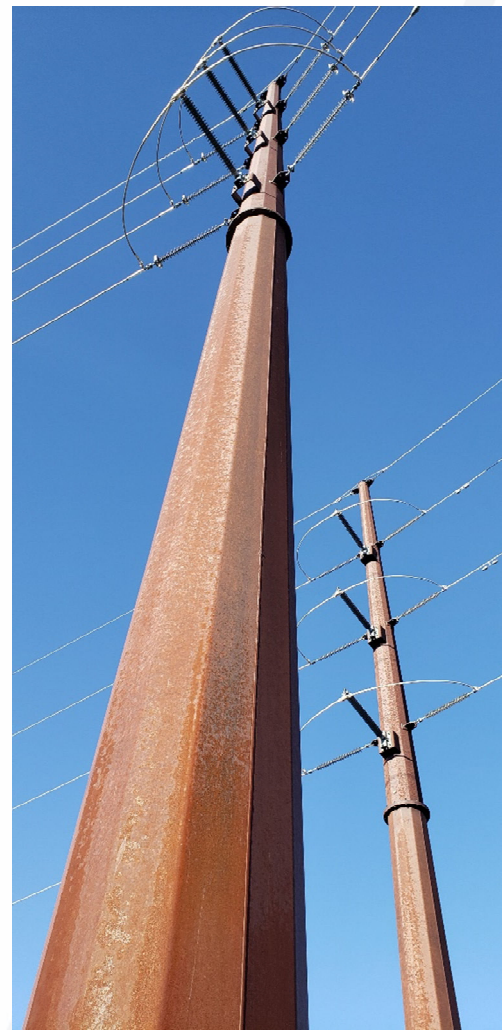


# Juan Tabo Boulevard





# Constraints





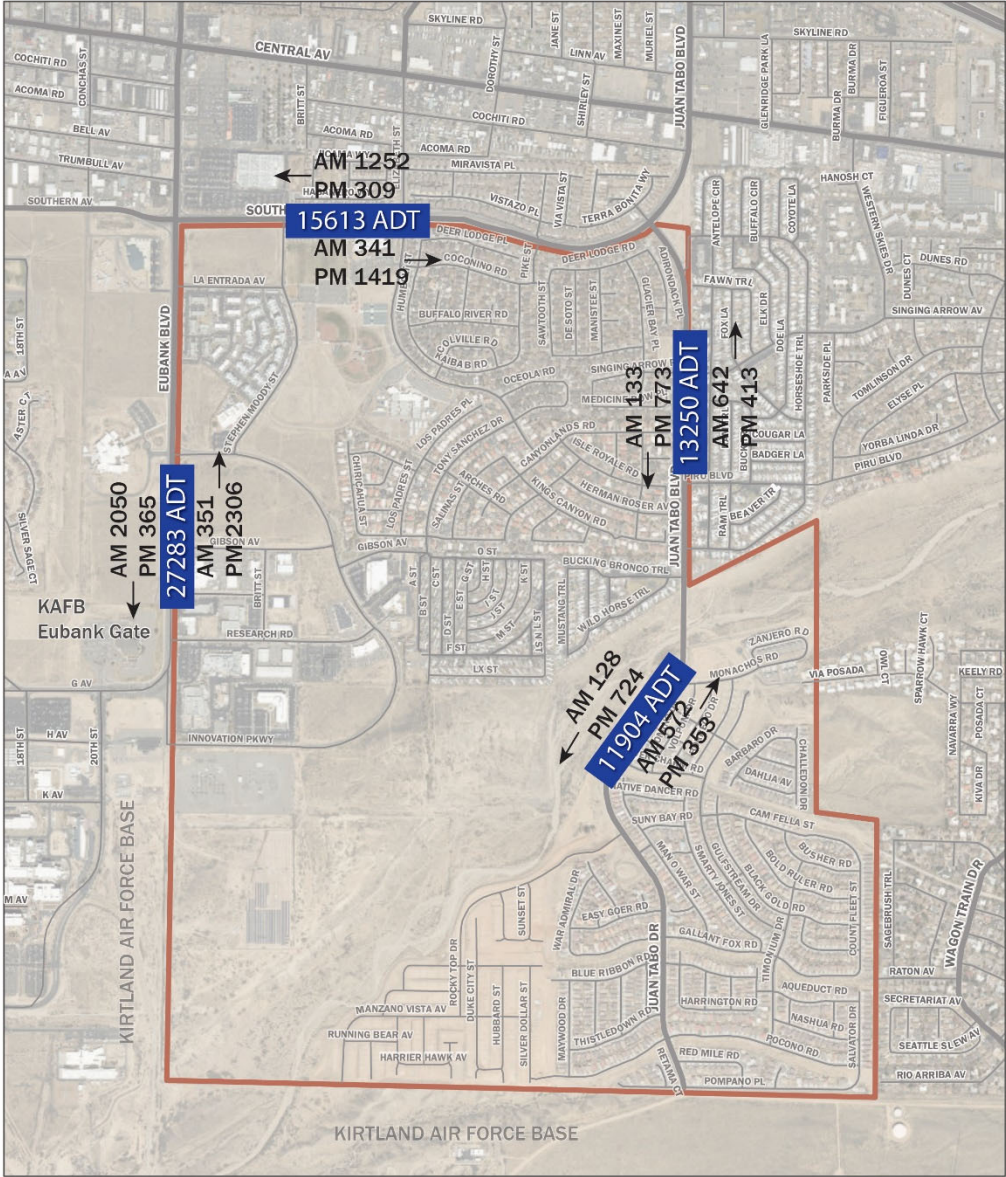
# Constraints



# Traffic



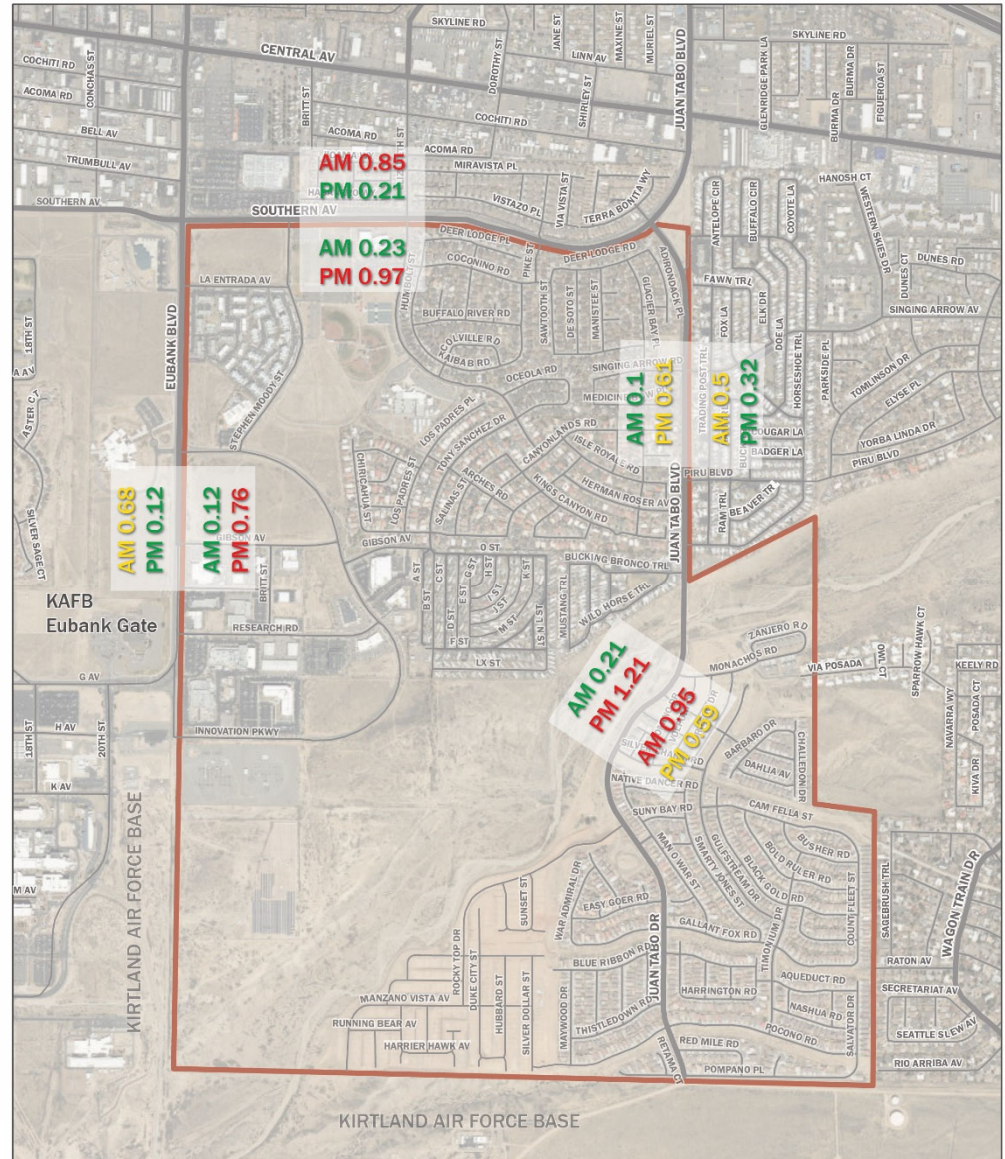
# Existing MRCOG Traffic Data



# Existing Volume-to-Capacity Ratio

- Volume-to-capacity (v/c) ratio is a measurement of roadway congestion

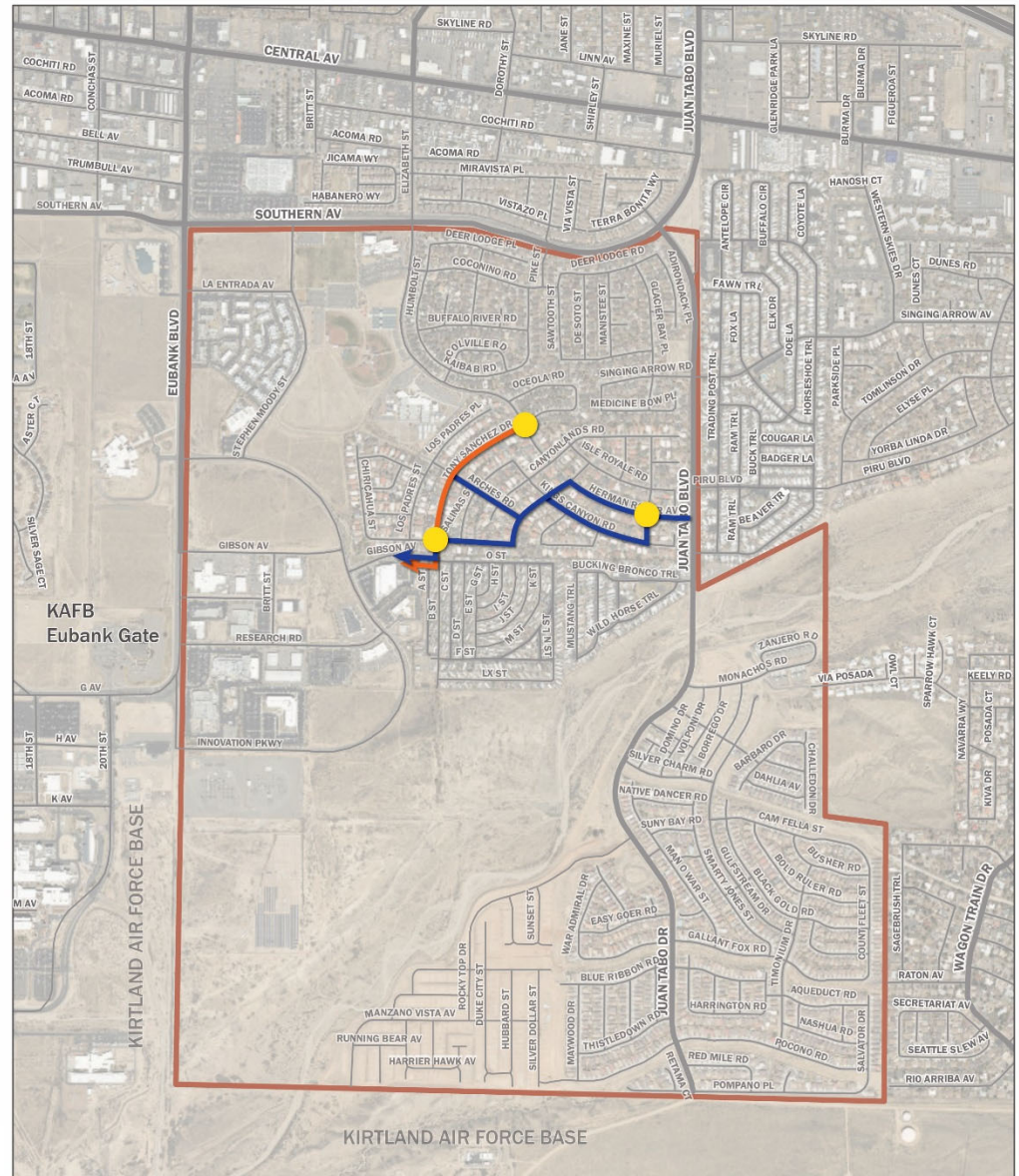
$$v/c = \frac{\text{volume of roadway}}{\text{capacity of roadway}}$$





# Willow Wood Cut-Through Data

- December 19, 2019 and January 30, 2020 by COA Traffic Division
- Approximately 60% of traffic was cut-through during the AM peak hour

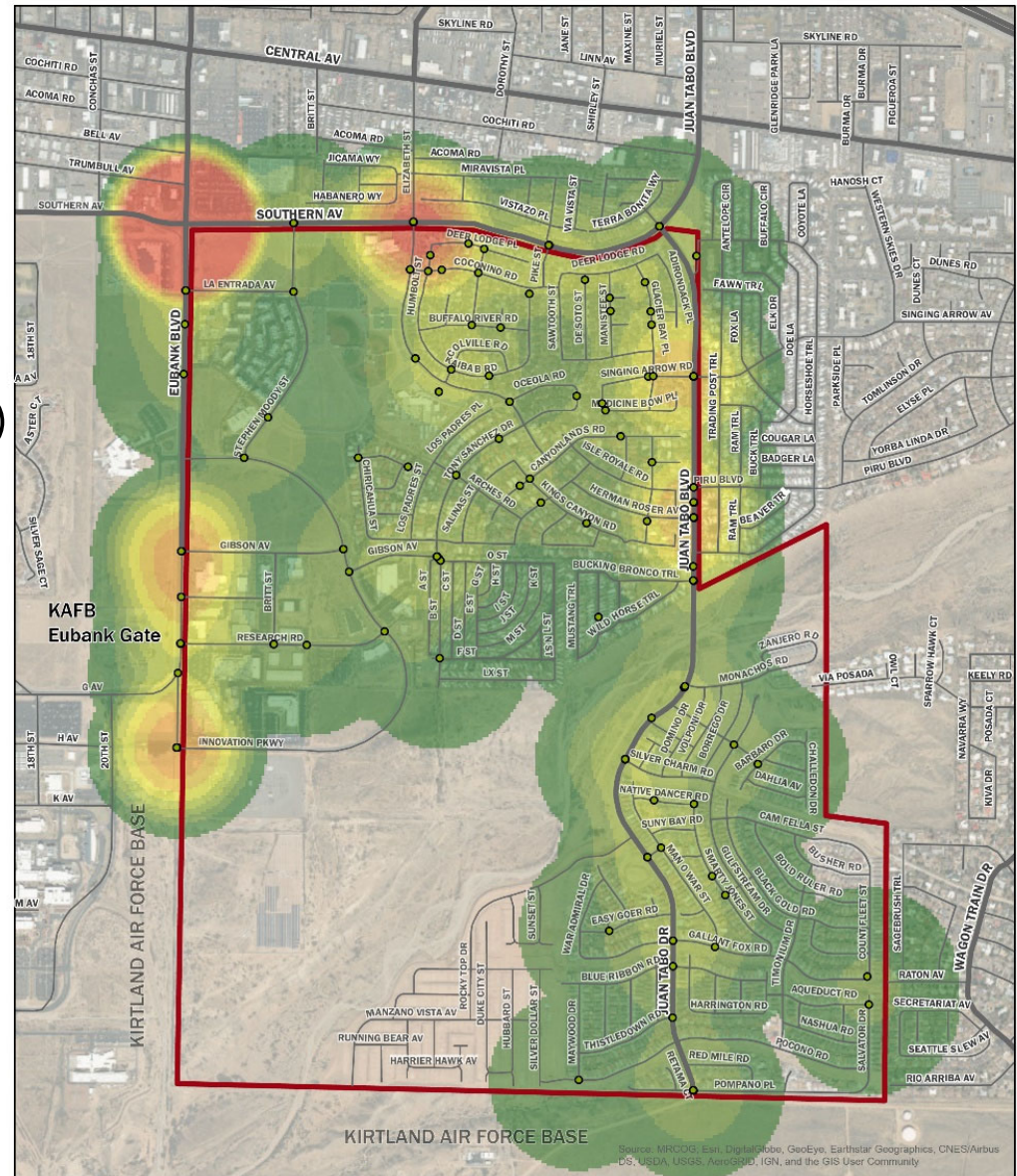




# Crash Data

# Hot Spot Analysis – Total Crashes

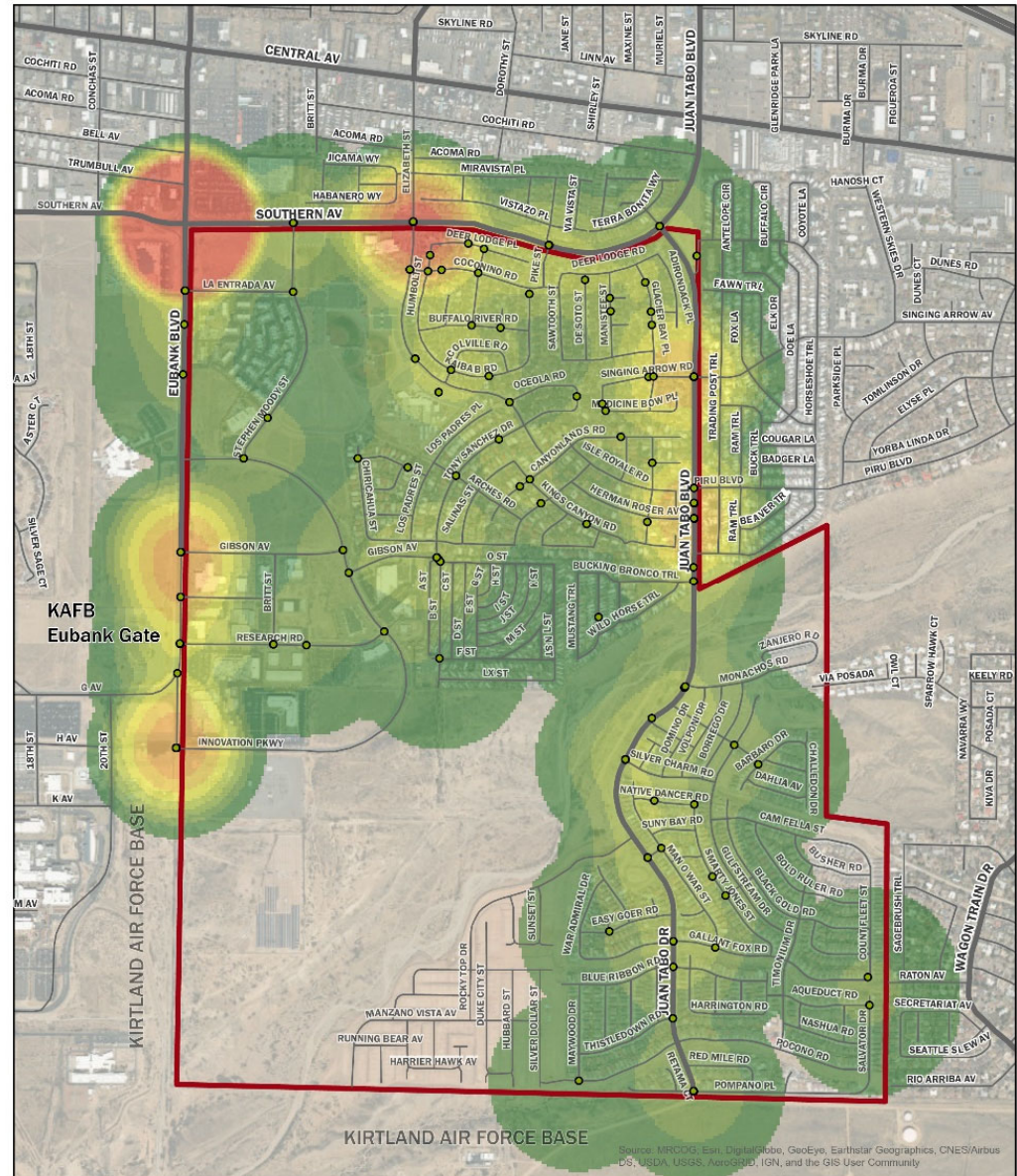
- 2014 – 2018 crashes
- Hot Spots:
  - Eubank & Southern (90)
  - Elizabeth & Southern (23)
  - Eubank & Innovation (16)
  - Eubank & Gibson (18)
  - 46 crashes along Juan Tabo Boulevard within study area, 70% north of bridge





# Hot Spot Analysis – Severity

- No fatal crashes
- 4 serious crashes:
  - Eubank & Southern
  - Eubank & La Entrada
  - Juan Tabo & Herman Roser
  - Juan Tabo & Pompano

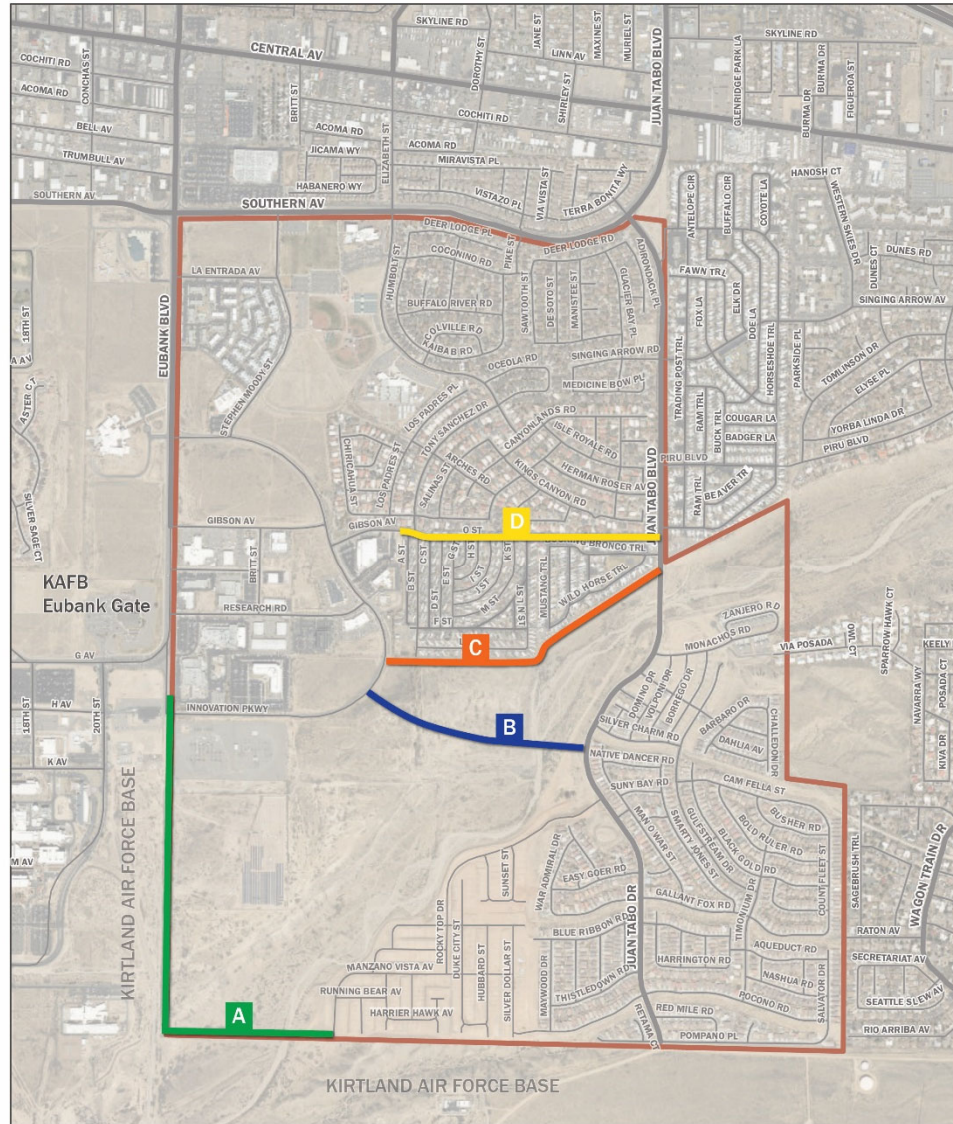


# Proposed Alternatives



# Alternatives

*Alternative D will be analyzed but is not a viable option due to the large impact to homes.*



# Alternative A

## Pros

Existing roadway easement

Edge of Tijeras Arroyo Bio-Zone

No home relocations

## Cons

Tijeras Arroyo crossing

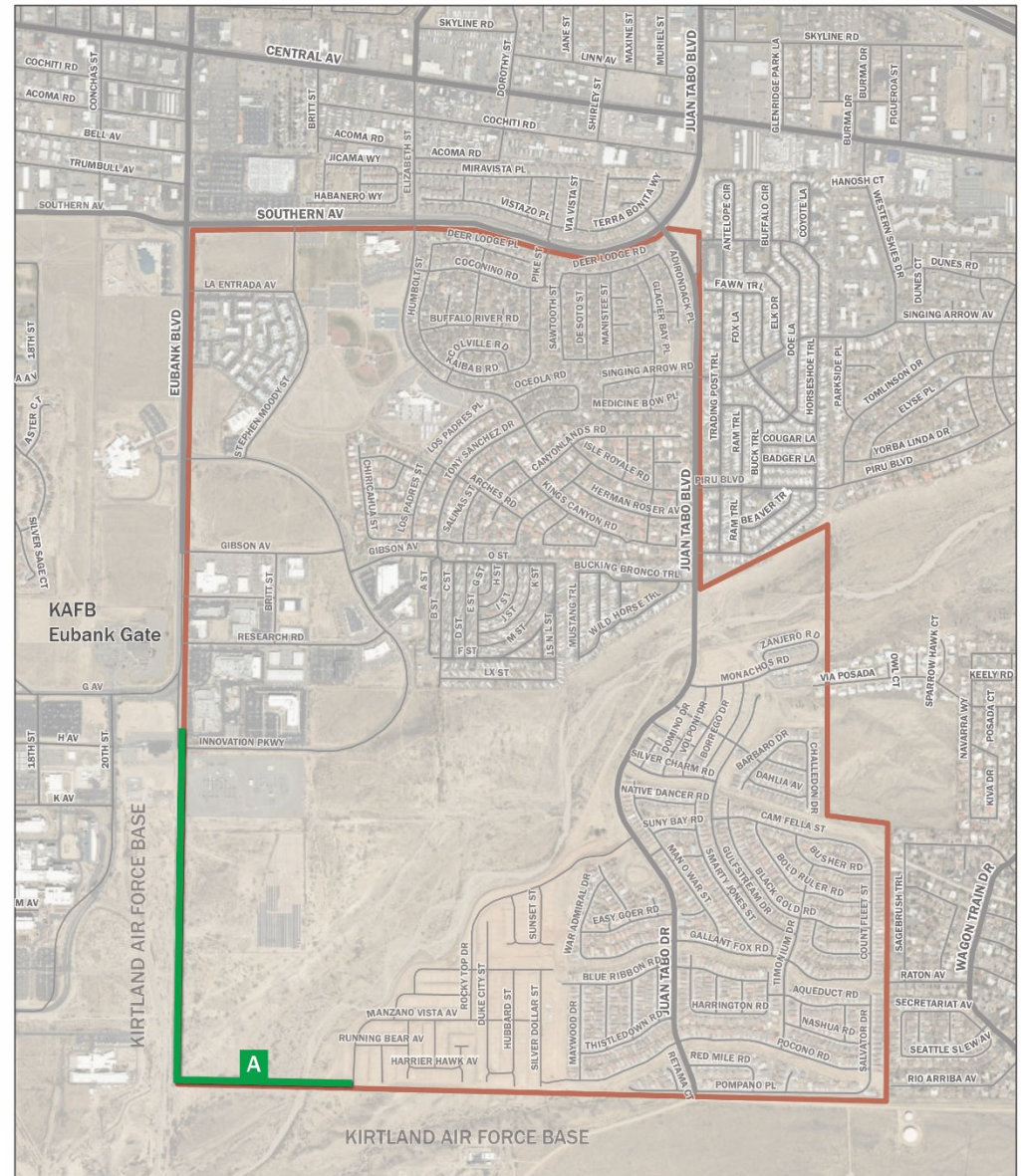
Ties into residential street in Juan Tabo Hills West community – cut-through traffic

Possible utility conflicts

Expensive – bridge

Edge of old landfill

**ROUE**





# Alternative B

## Pros

Ties into collector roadways

No cut-through traffic

No home relocations

## Cons

Tijeras Arroyo crossing

Within Bio-Zone

Possible utility conflicts

Expensive – bridge

Old landfill



# Alternative C

## Pros

Ties into collector roadways

No cut-through traffic

No home relocations

Not within landfill

## Cons

Tijeras Arroyo crossing

Within Bio-Zone

Possible utility conflicts

Expensive – retaining walls,  
earthwork





# Alternative D

## Pros

Ties into collector roadways

No cut-through traffic

Not within Bio-Zone

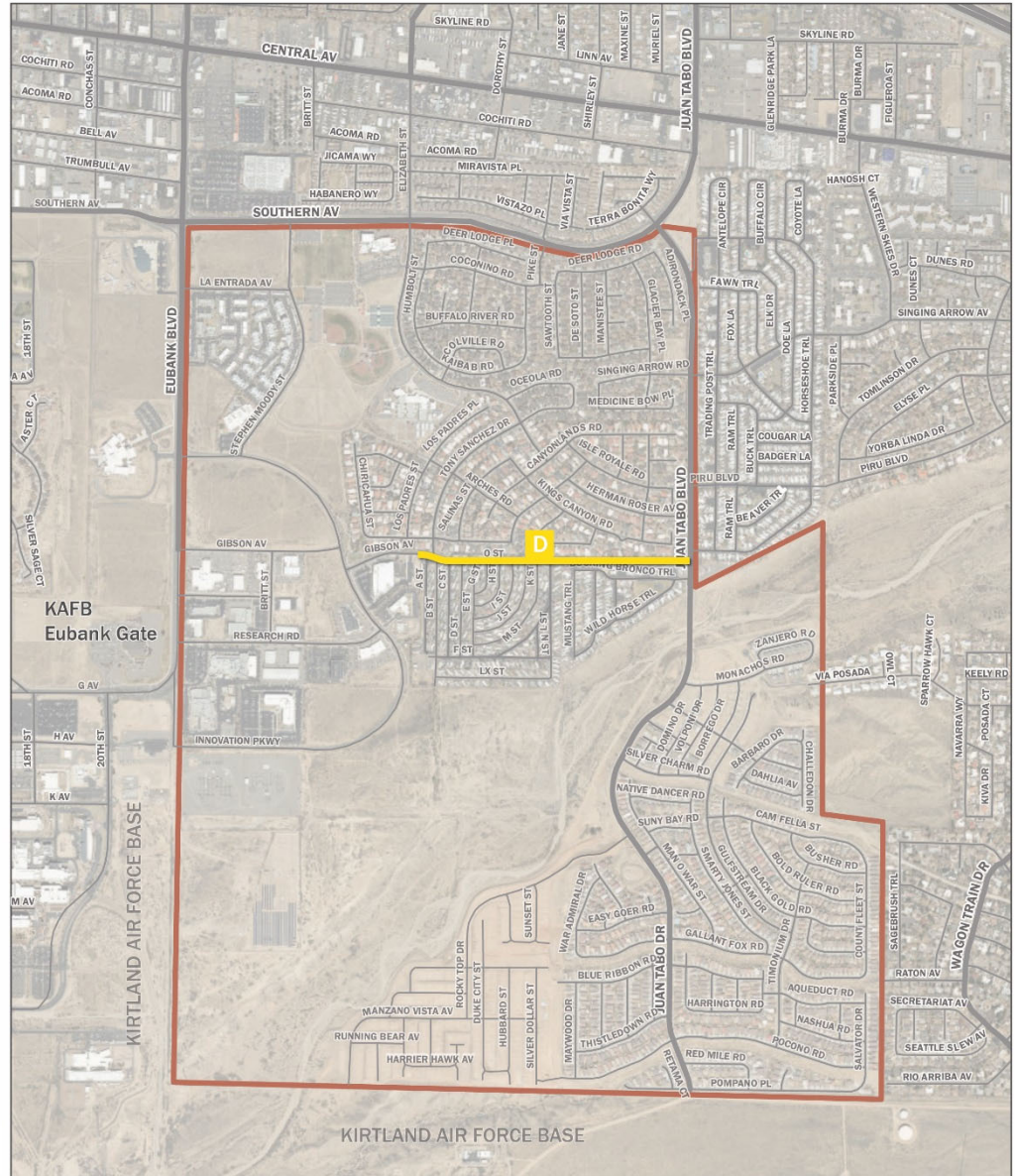
Not within landfill

## Cons

Home relocations

Possible utility conflicts

*This alternative will be analyzed but is not a viable option due to the large impact to homes.*



## Alternative E – No-Build

### Pros

Least expensive alternative

Not within landfill

Not within Bio-Zone

No home relocations

### Cons

Connectivity

Traffic

# Public Input

## Questions/Comments

- Survey after the presentation
- Email comments to [audra.gallegos@wilsonco.com](mailto:audra.gallegos@wilsonco.com)
- Deadline for comments December 15, 2020
- Next public meeting tentatively January 19, 2020



Thank you!