

**2013 murals feature Native American artists for Place/Displaced, a series about cultural identity**

**1 Jamison “Chas” Banks**

Banks’ mural, titled *Inland Empire: A Suspended Animation*, references the Louisiana Purchase, the largest land acquisition in the history of the United States and the dreams of imperial power symbolized by Napoleon. Banks says, “Glory, grandeur, occupation, defeat and exile, these are the commonalities of New World domination.”

**2 Frank Buffalo Hyde**

Buffalo Hyde says his mural, titled *Patternation*, is, “an investigation of pattern as tradition, pattern as generations and the breaking of patterns where we find hope. Symbols are the vocabulary we communicate with non verbally. I believe we are all hard wired to understand them.”



**PROJECT STAFF**

David Cudney, Project Director

Wells Park Neighborhood Association & Factory on 5th

Jerry Miller, Wells Park Neighborhood Association

Suzanne Sbarge & Rhiannon Mercer, 516 ARTS

Agnes Chavez & Nicholas Chiarella, 516 ARTS/ISEA2012

Shannon Miller & Roger McNew, ¡Explora!

The Wells Park Rail Runner Mural Project is made possible in part by the Wells Park Neighborhood Association, The City of Albuquerque Public Art & Urban Enhancement Program, The FUNd at Albuquerque Community Foundation, Intel Corporation and Kwal Paint.



**2012 murals explore the intersection of art, science and technology for ISEA2012**

**3 David Leigh**

This mural, *Mirrored Robots*, touches on ideas of camouflage, self-recognition and adaptive mimicry as they relate to machines, conveying the understanding that technology infiltrates life to such a degree that it becomes necessary for survival and identity.

**4 John McClendon**

These bee images, appearing in multiple sites, were created to bring attention to the plight of the honey bee. The growing demand for food, the use of pesticides and other environmental concerns, and the decreasing populations of honey bees create concern for the future of humanity without insects to pollinate our food supply.

**5 8 Larry Bob Phillips**

Sister pieces *Trance Dance* and *Dualities*, while being primarily hand-made, are conceived in the face of sweeping and inspiring changes wrought by the technological revolution. From sonar to vector graphics, these images use techniques and formalisms that are mathematical in essence.

**6 Nanibah Chacon**

*She Taught Us to Weave* reexamines tools of sustenance and communication in a complex age of technology. A low-powered radio transmitter emits the Navajo phrase “Hozho naahaslii” on station 96.9. “Hozho” encompasses the intrinsic value of living beautifully.

**7 Nettrice Gaskins & Laurie Marion**

*Augmented Reality for Open Spaces* (AROS) is a mix of mathematics, philosophy, technology and street art. This tech-interactive mural, which examines cosmic themes of life and death, allows passengers on the Rail Runner with mobile devices to download a free browser that, when used to view the mural, reveals augmented reality components, viewable from devices using the Argon AR Web Browser, available online at <http://argon.gatech.edu>.



The Wells Park Rail Corridor Mural Project is a neighborhood initiative intended to beautify and improve the Rail Runner corridor between Mountain Road and Interstate 40, to support local artists and encourage youth participation in the arts. At present, the rail corridor is the very visible “entrance” and “exit” to Downtown Albuquerque by the Rail Runner’s over 117,000 riders per month and the large national audience of Amtrak trains. The murals enhance both the image of the area and the experience of the rail passengers. The project includes seven separate murals by lead artists or artist teams assisted by apprentices from local youth organizations.

The 2013 murals were created in conjunction with the exhibitions at 516 ARTS, *Air, Land, Seed* and *Octopus Dreams*, focusing on contemporary Native American artists. The 2012 murals were created in conjunction with *ISEA2012 Albuquerque: Machine Wilderness*, the 18th International Symposium on Electronic Art hosted by 516 ARTS.

[www.516arts.org](http://www.516arts.org)



## WELLS PARK RAIL CORRIDOR MURAL PROJECT

View the murals from passenger trains north of Mountain Road and 1<sup>st</sup> Street on the west side of the tracks, north of Downtown Albuquerque.



Presented by Wells Park Neighborhood Association & 516 ARTS in partnership with The City of Albuquerque Public Art & Urban Enhancement Program

## LEAD ARTISTS

Jamison "Chas" Banks  
Frank Buffalo Hyde  
Nanibah Chacon  
Nettrice Gaskins & Laurie Marion  
David Leigh  
John McClendon  
Larry Bob Phillips

## APPRENTICES

### 516 ARTS

Celine Gordon  
Clayton Olsen  
Almaz Wilson

### ¡Explora!

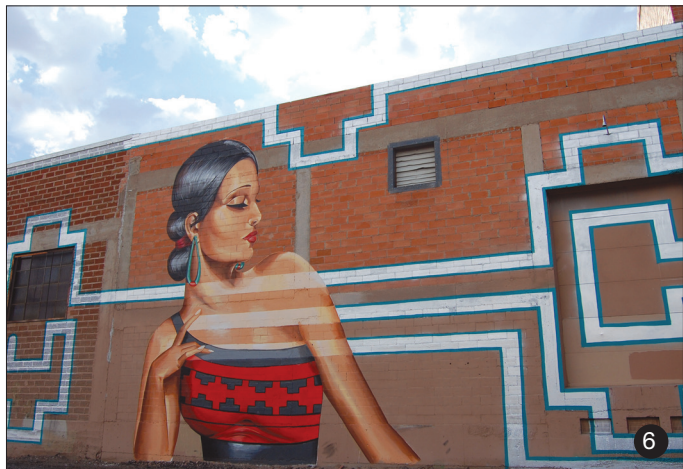
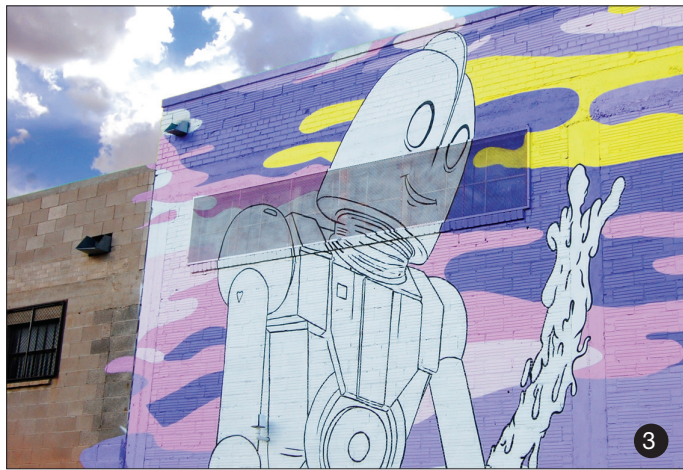
Nicolas Chavez  
Jasmine Prieto  
Cristian Pules  
Isaiah Robles  
Stephanie Sisneros  
Moses Trujeque  
Samantha Vigil  
Junior Nieto

### Factory on 5th

Jesus Delgado  
Jonathan Griego  
Felix Hernandez  
Hugo Hernandez  
Asa Kennedy  
Alyssa Romero

### Working Classroom

Katia Perez



The murals are visible from passenger trains, north of Mountain Road and 1<sup>st</sup> Street on the west side of the tracks, north of Downtown Albuquerque.