

Networking for **I.D.**entity

A Drainage Improvement Plan for the International District



UNM Advanced Planning Studio
Fall 2014



+ Introduction



Teaming Up for Better Places

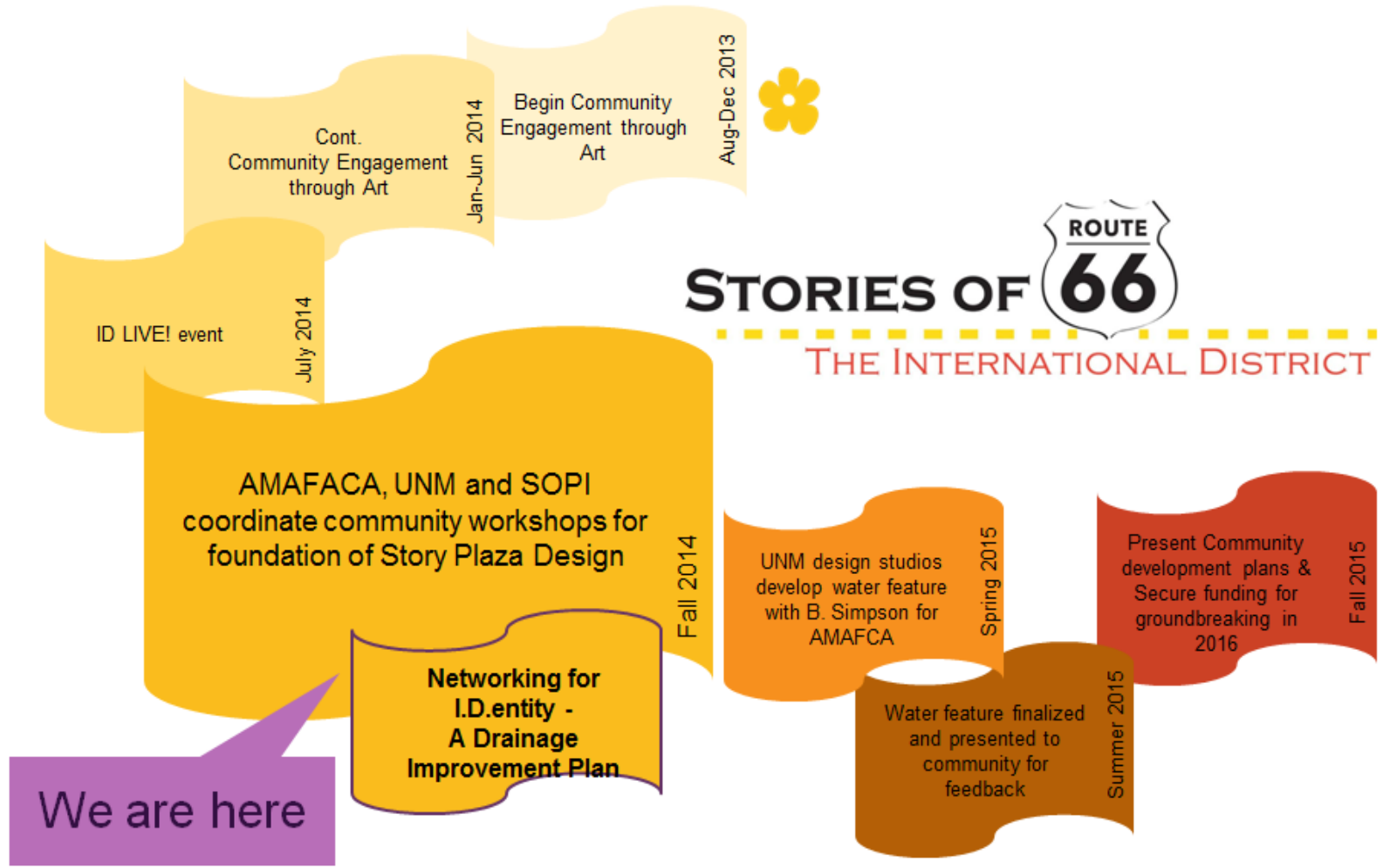
The Stories of Route 66 Project received an Our Town Grant through the National Endowment of the Arts (NEA) to make Story Plazas along Route 66 Corridor.

AMAFCA, Stories of Route 66, UNM, and many other partners ([Albuquerque Cultural Services](#), [Littlelobe](#), [International District Healthy Communities Coalition](#), and [Bernalillo County](#)) are working together to create solutions that solve problems like flooding and water quality, while providing creative gathering and social spaces for the peoples of the International District.





Phasing Timeline

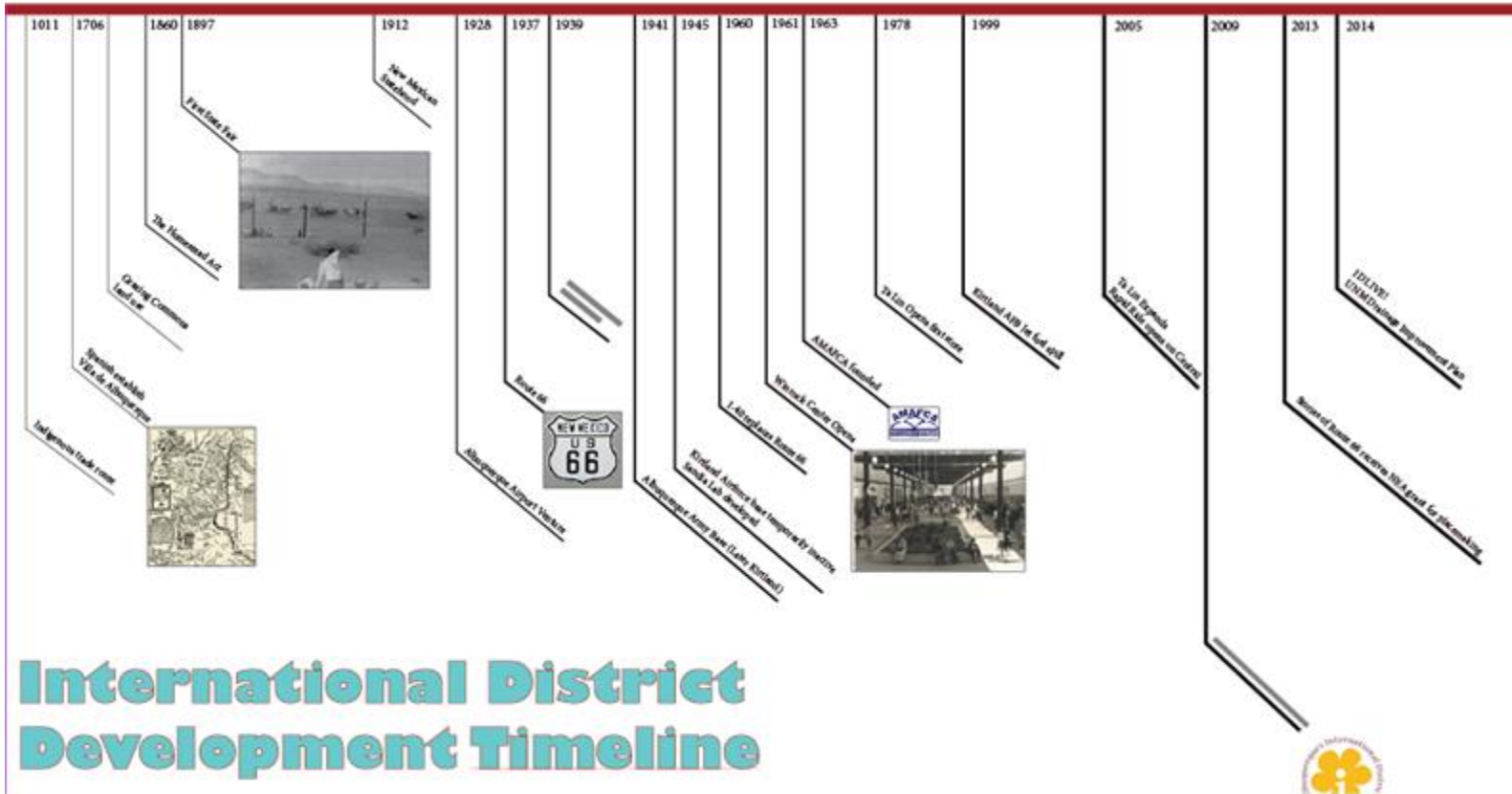




+ Existing Conditions

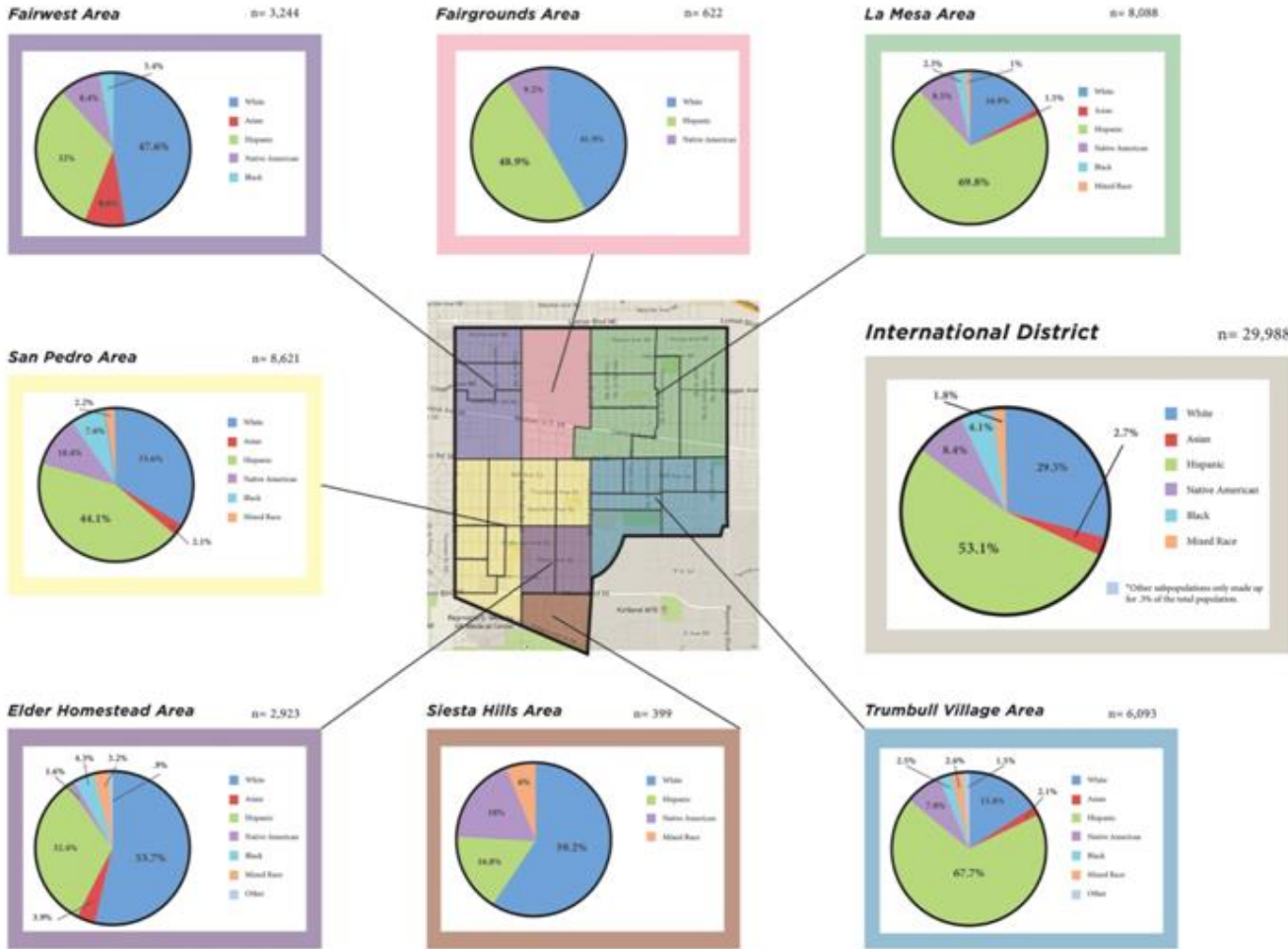


Major Historical Developments in the I.D.





Demographics = Diversity





What are the Planning Problems & Opportunities?



- Deficient Storm Water Infrastructure

- Low Walkability & Amenity

- Disjointed Community Realm



+ Stormwater Run-Off

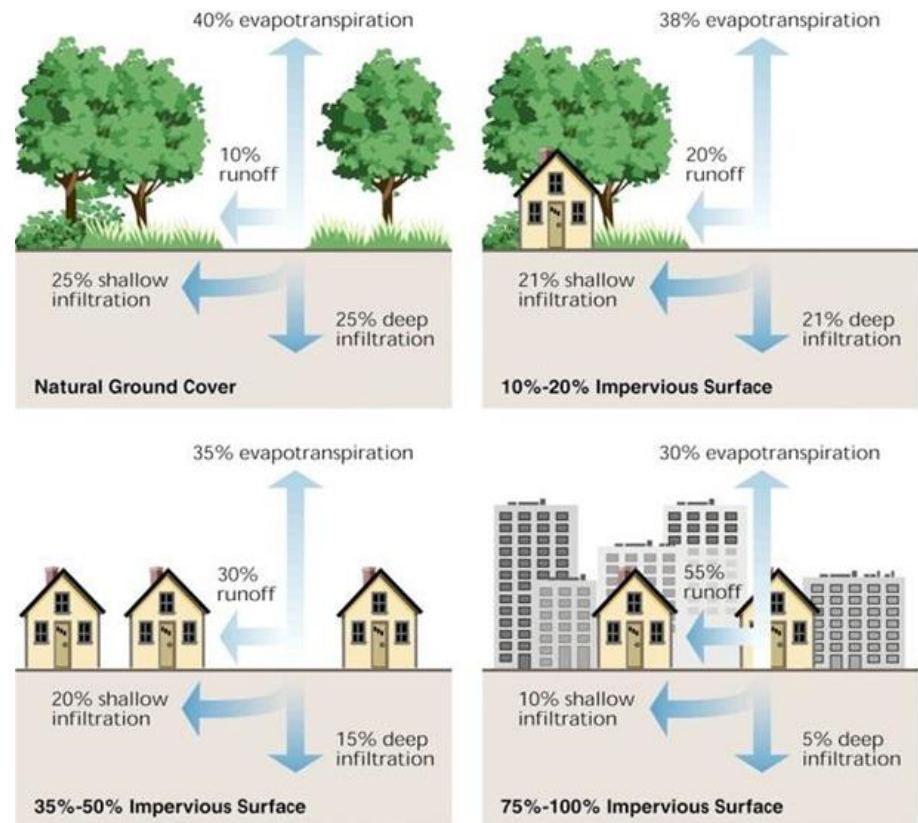


Several contaminants continue to plague Albuquerque's stormwater. These include:

- Metals
- E.Coli
- Nitrogen and Phosphorous
- Chemical Pollutants

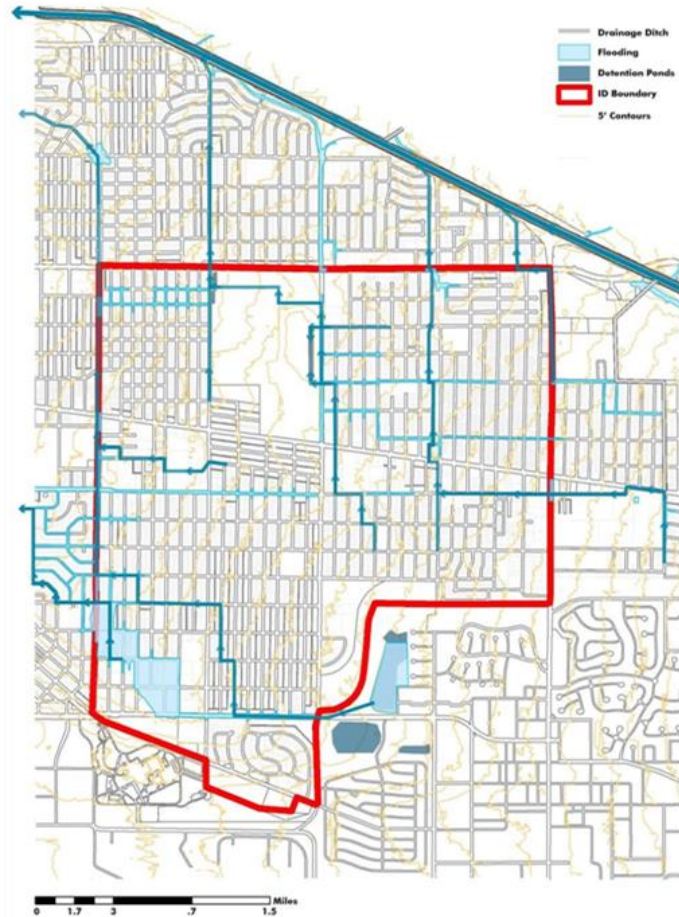
There are many sources from which these contamination come. Cars, farming efforts, parks and homes just to name a few.

The lack of porous surfaces in the international district essentially creates a channel that carries storm water runoff directly to the river, which creates a great concentration of contamination at the North Diversion Channel.





Stormwater Infrastructure



**Insufficient infrastructure = 100
acre-ft. stormwater capacity deficit**

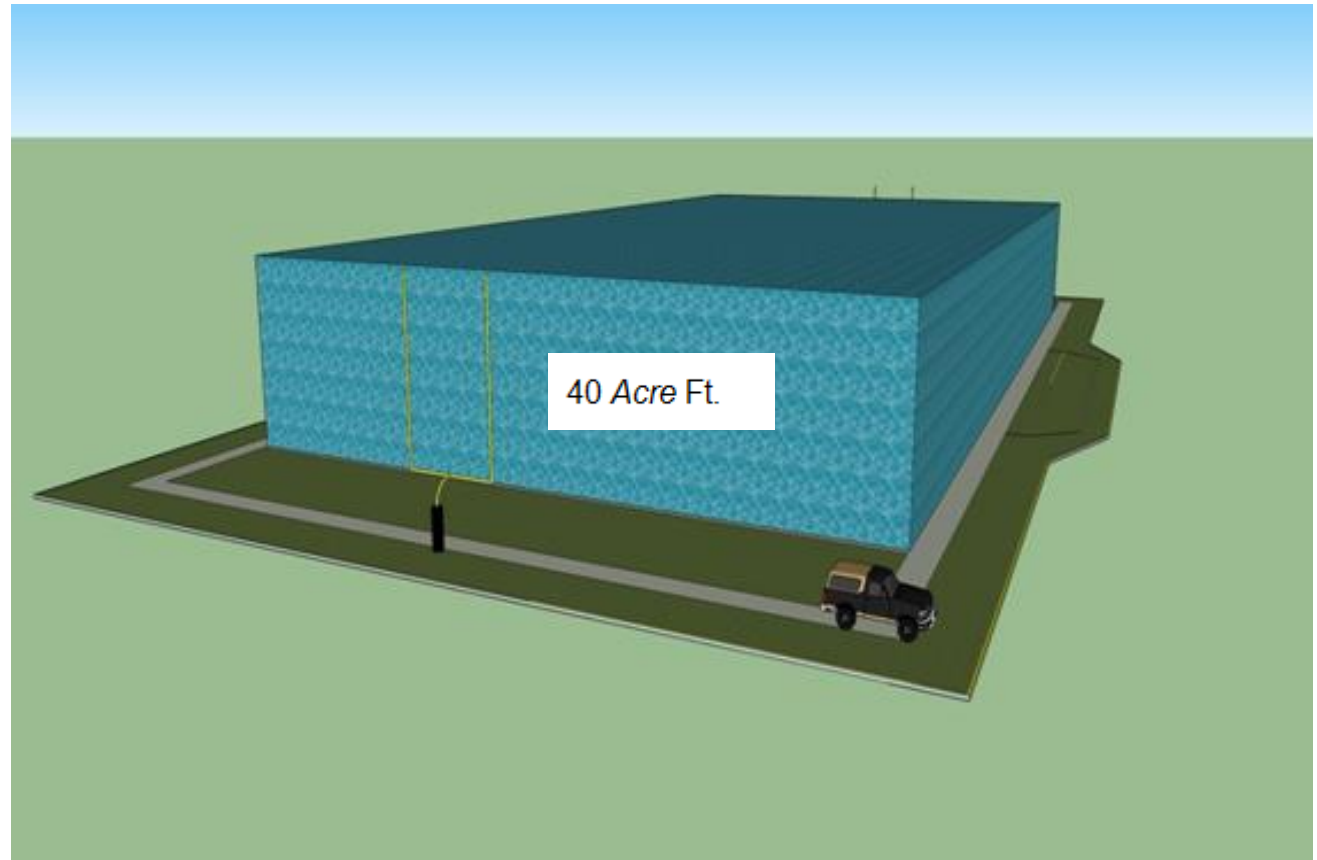


How Much is 100 acre-feet?



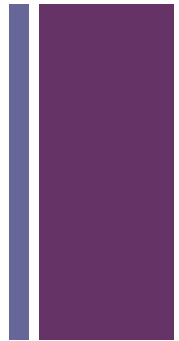
An acre is about the size of a football field between the 5-yard lines. So, 100 acre-ft. of water would be about the size of that football field filled 100 feet high (about the height of a 10-story building) with water.

A Route 66 Story Plaza might be able to handle 40 acre-ft, or as much as a football field filled 40 feet high with water.



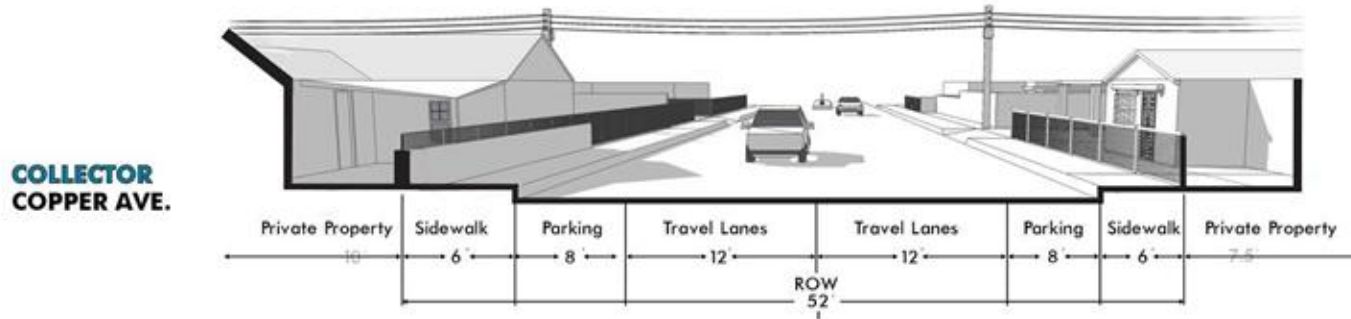
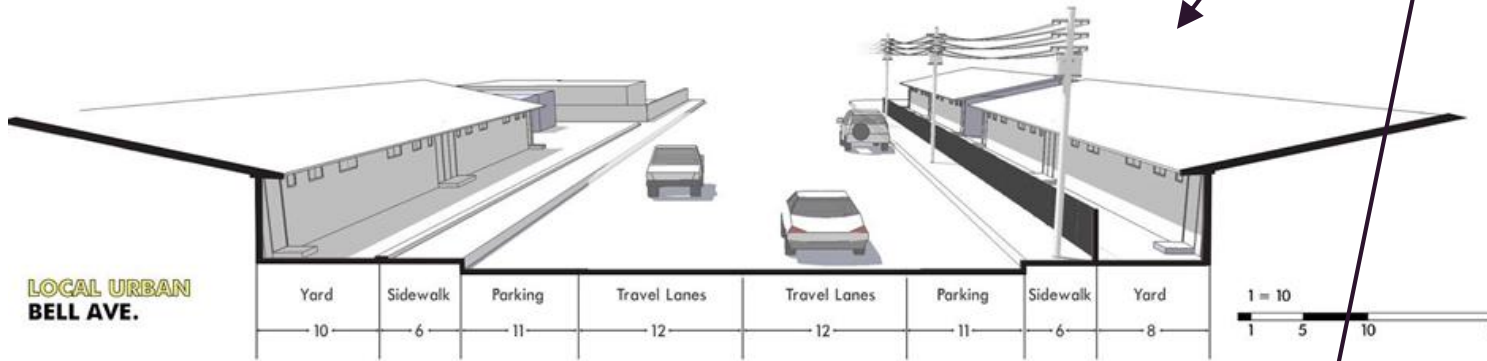
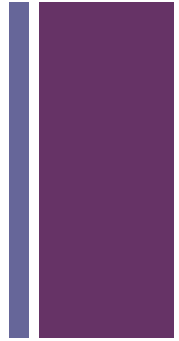
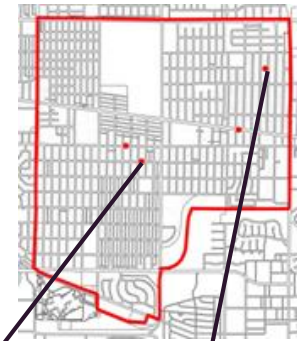
+ Streets as Places

- ⊙ Bus Stops
- Bus Routes
- Bikeways
- Sidewalks
- Alleys
- Urban Collector
- Arterial
- Local Neighborhood
- Historic Route 66



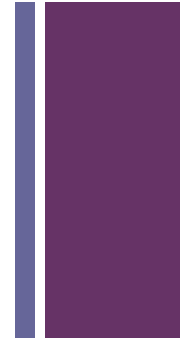
+ Streets as Places

Existing streets & sidewalks tend to be harsh, hot, & unmaintained with high traffic volumes, low safety. They don't support community life.

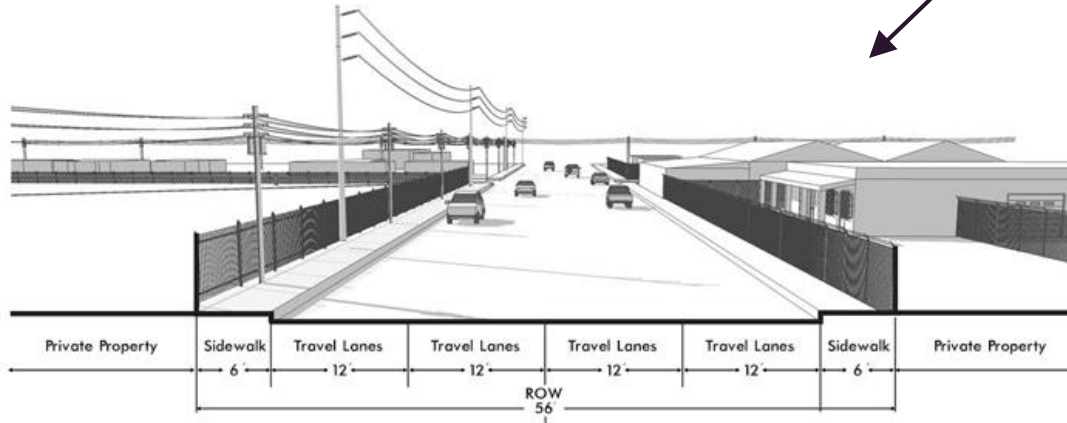


+ Streets as Places

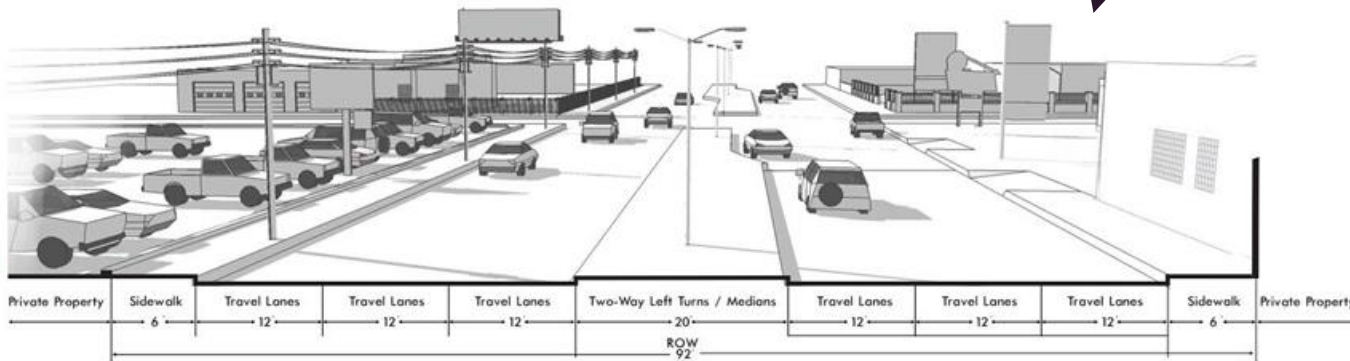
Existing streets & sidewalks tend to be harsh, hot, & unmaintained with high traffic volumes, low safety. They don't support community life.



**ARTERIAL
ZUNI RD.**



**HISTORIC RT 66
CENTRAL AVE.**





Opportunities

- Use stormwater run-off in a dry climate for plantings & art
- Use streets: pedestrian / bicycle paths and transit corridors
- Use Publicly-owned properties and facilities
- Use Vacant lots
- Strengthen community identity & safety

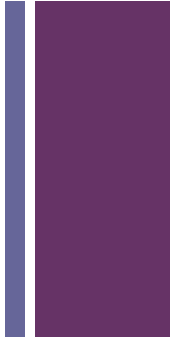




+ Community Engagement Summary



Community Engagement - Why?



- **Social Impact Design** believes that physical design can help create positive social change.
- Communities and not just “experts” should be included in design partnerships to better guide what improvements will benefit the community.
- The International District has unique cultural identities that should **all** have a **voice** in the design process.



Methodology

- One-on-one and group discussions
- Education
- Opportunities for feedback
- Meaning of water
- Community strengths and challenges
- Present and discuss design concepts or precedents



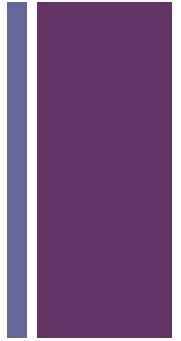
+ Who?

- Emerson Elementary (parents)
- Afghan refugee community
- La Mesa Elementary (4th grade)
- East Central Ministries
- NM Asian Family Center
- Albuquerque Indian Center
- Casa de las Comunidades
- Elder Homestead Neighborhood Association





Synthesizing Feedback



Theme	Afghan Community	East Central Ministries	Elder Homestead	Casas de las Comunidades	American Indian Center	La Mesa Elementary	Asian family Center	
Health & Safety	1	3	1			3	1	<u>9</u>
Connectivity	1							<u>1</u>
Street Improvement	2		1	1				<u>4</u>
Pedestrian Improvement	1	1			1			<u>3</u>
Public/Green Space	1		1	1		3	3	<u>9</u>
Aesthetic Improvements		1			1			<u>2</u>
Programmatic Improvements				2		1	2	<u>5</u>
Community Engagement					1			<u>1</u>
Interagency Coordination					2			<u>2</u>
Public Art					2	1		<u>3</u>
Education						1		<u>1</u>
Way Finding		1						<u>1</u>
	<u>6</u>	<u>6</u>	<u>3</u>	<u>4</u>	<u>7</u>	<u>9</u>	<u>6</u>	<u>41</u>

After public input was received the main point of each comment was categorized into a “theme” that we could use to generate recommendations.

+ What do these Numbers Tell Us?

Community Engagement

Programs
Safety
Streetscape
Pedestrian

Health
Education
Connectivity

Public Art
Aesthetics
Wayfinding

Green Space

URBAN
WATERSMART

SAFE SCHOOL ZONE

Public Art (fish sculpture)

Wayfinding (signposts)

Green Space (park area)

The graphic features several images: a street view with a crosswalk, a stylized globe icon, a network diagram, a house with water splashing, a yellow octagonal sign, a colorful fish sculpture, a set of blue wayfinding signs, and a scenic view of a park with a pond and walkways.

+ Green Space



•“Walking to and from the bus stop is troublesome. Better streetscapes including trees and lighting would be helpful.”

•"Create public space(s) that not only retain water and provide fun activities for youth, but also have a drainage system for allows for re-use by the community."

•There was consensus among the group that small scale street scape improvements and green space, as opposed to larger interventions, would most benefit their day to day lives.

+ Public Health



- "Create public space(s) that not only retain water and provide fun activities for youth, but also have a drainage system for allows for re-use by the community."
- "Several participants expressed concerns over standing water - either in a detention pond, or puddles in streets for lack of drainage."



Pedestrian Improvements



- “Consider a Central ‘street diet’ which could include landscaped medians, widened sidewalks, crosswalks, and lighting.”
- “Walking to and from the bus stop is troublesome. Better streetscapes including trees and lighting would be helpful.”



Programmatic Improvements



- “Shelter or safe places for the homeless, including job opportunities – such as litter removal in the arroyos.”

+ Integration of Public Art

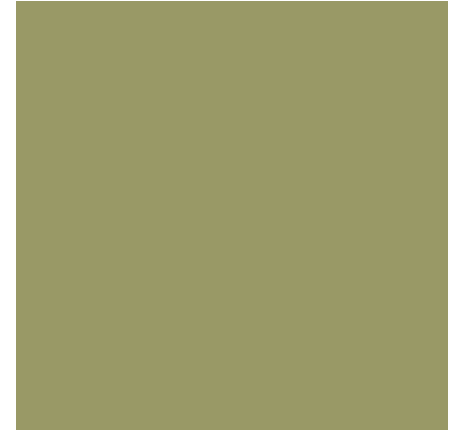


•"I would like to see more flowers and decorations. Also a little more art. Work it so it makes the place pop out more and brings comfort to see it nice, beautiful and creative. I would like to see more landscape around and trees. I would want it to be a little more outstanding. "

+ Feedback Analysis



- Each meeting was documented and discussed to find common themes between groups
- A graph was created in order to rank importance.
- These were used to inform recommendations that will be reported to AMAFCA



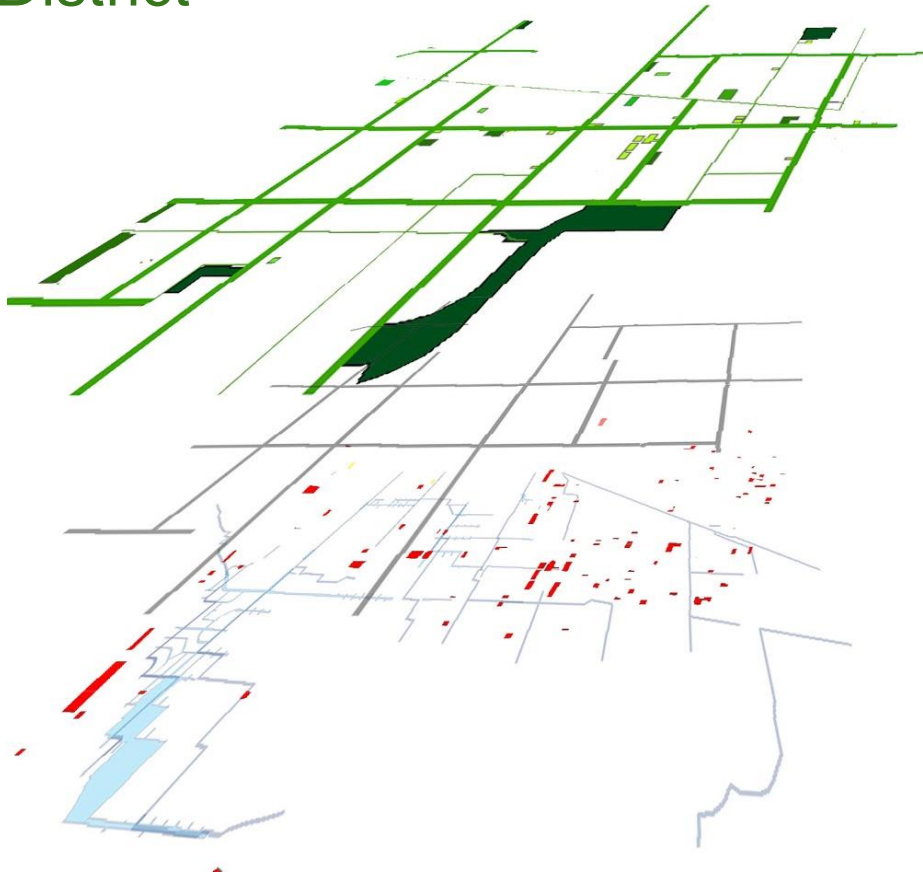
+ UNM Studio Recommendations

+ Vision

CRP 521 envisions a networked, green stormwater infrastructure system that responds to the needs of AMAFCA and the International District Community with increased community space and streetscape.

GREENWEAVING:

Connecting Water to Place in the International District



Green Weaving uses green roadway design to provide neighborhood connectivity as well as treating stormwater. It links a variety of scales of stormwater management sites creating a system that sustainably manages stormwater, provides a safe pedestrian environment and enhanced civic realm.

International trail addresses lack of pedestrian amenities and Links community assets, parks, schools, and community centers.

International district has high number of vacant lots and lacks civic space.

International district currently has flooding. Problems caused by inadequate storm-drain system



Five scales of sites connected by green streets



Streets



Large-Civic Space



Park Retrofit



Residential Property



Commercial Property



RECOMMENDATIONS: GREEN INFRASTRUCTURE



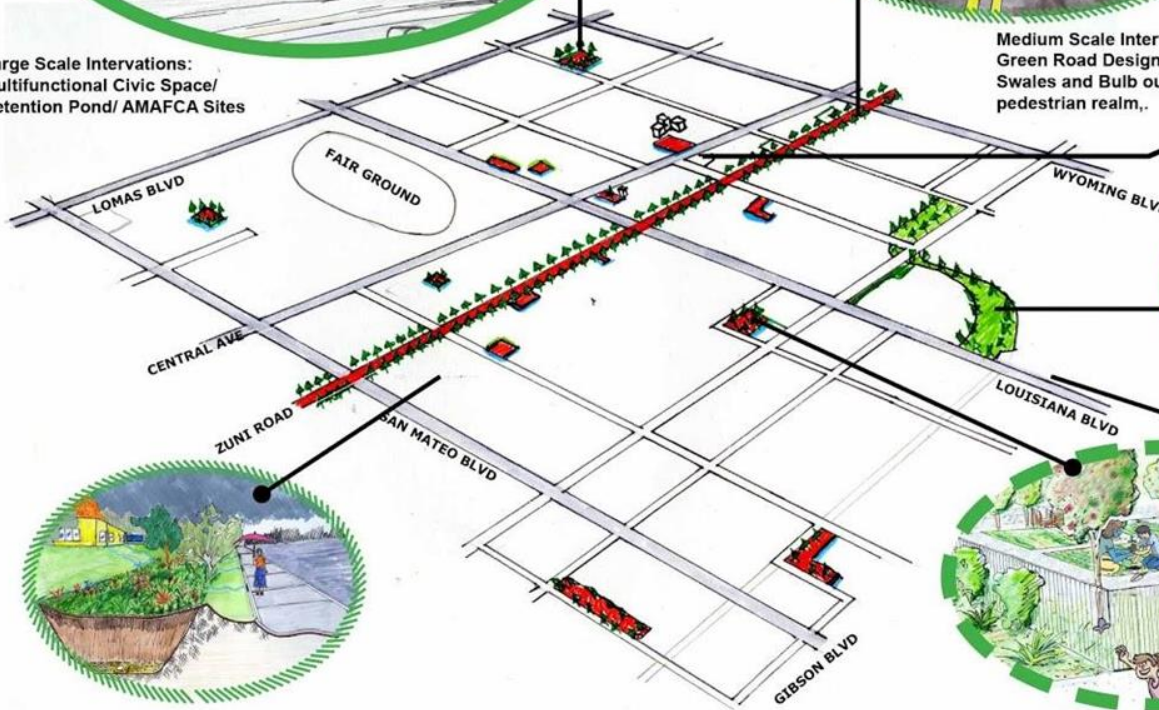
Large Scale Interventions:
Multifunctional Civic Space/
Detention Pond/ AMAFCA Sites



Medium Scale Interventions:
Green Road Design Planted with
Swales and Bulb outs, enhances
pedestrian realm.,



Small Scale Interventions:
Private Property Owners/ Rain Barrels/
Bioswales/ Community Garden/ Permeable
Paving/ onsite stormwater management.



Large Civic Space: Caravan East



Before



Caravan East



After



Caravan East



Agencies: AMAFCA, CABQ, DMD

Responsibilities: AMAFCA develops, maintenance is negotiated with CABQ

Funding: AMAFCA & CABQ

Capacity: roughly 17 acre feet

After

Gardens

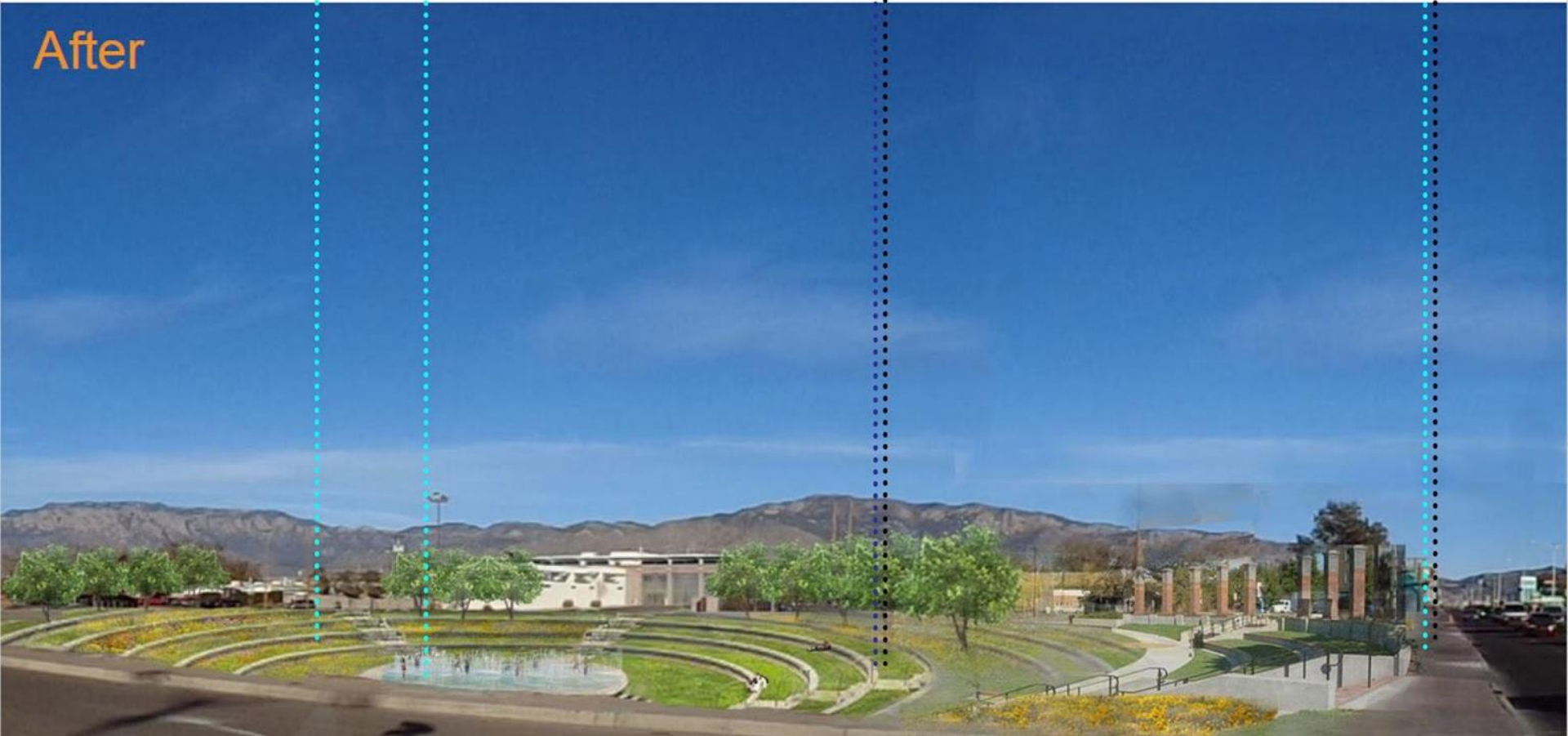
Community Recreational Space

Bioretention

Detention Pond

Streetscaping

Enhanced Streetscape



Streets: Central Streetscape



Before



After



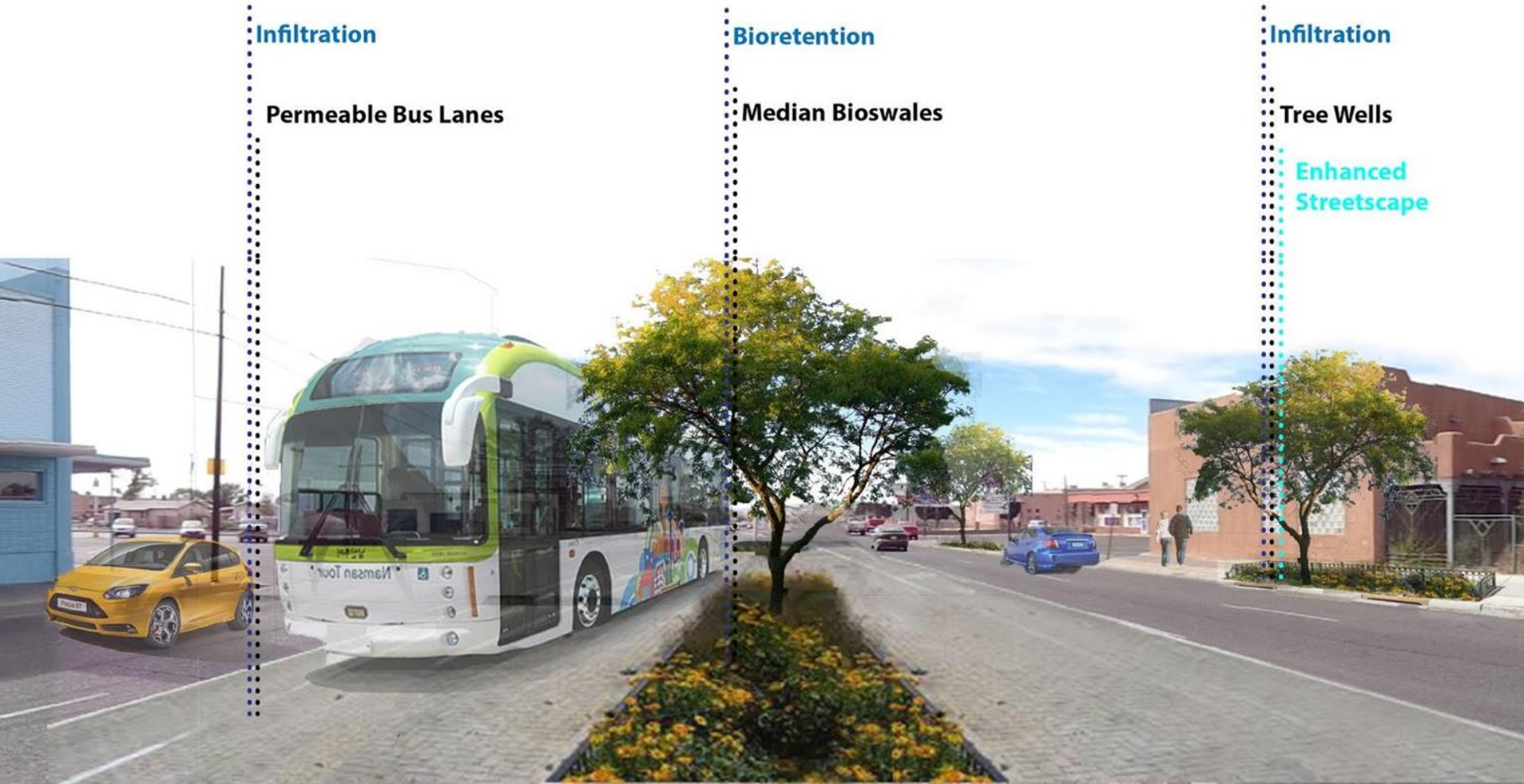
Central Streetscape



Agencies: CABQ/ Route 66

Responsibilities: Design, construction & maintenance

Funding: CIP



Infiltration

Permeable Bus Lanes

Bioretention

Median Bioswales

Infiltration

Tree Wells

Enhanced Streetscape

Streets: Zuni Streetscape



Before



Zuni Streetscape



After



Zuni Streetscape



Agencies: CABQ

Responsibilities: Design, construction & maintenance

Funding: CIP

Infiltration

Permeable Pavement

Bioretention

Bioswales

Enhanced Streetscape

After



Commercial Retrofit: Private Property



Before



Private Property: Fair and Square Parking Lot Retrofit



After





Private Property: Fair and Square Parking Lot Retrofit

Agencies: Private property owner, AMAFCA & city

Responsibilities: Lot owner responsible for construction & maintenance

Funding: AMAFCA & CABQ give incentive

Infiltration

Permeable Pavement

Bioretention

Bulbouts

Reduces Heat Island Effect

Bioretention

Bioswales

After



Residential Retrofit: Private Property



Before



Residential Retrofit: Private Property



After



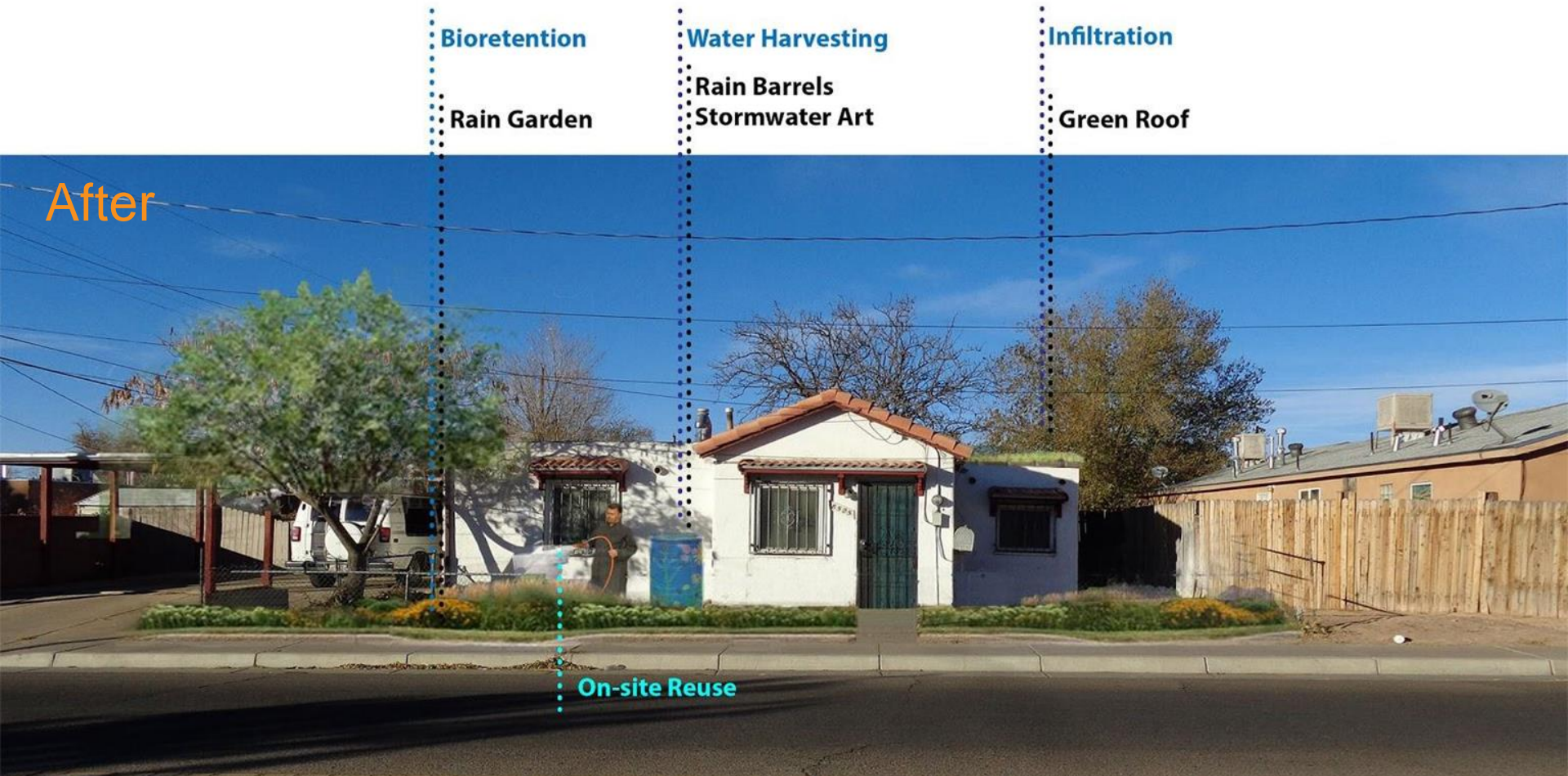
Private Property: Residential Rain Gardens



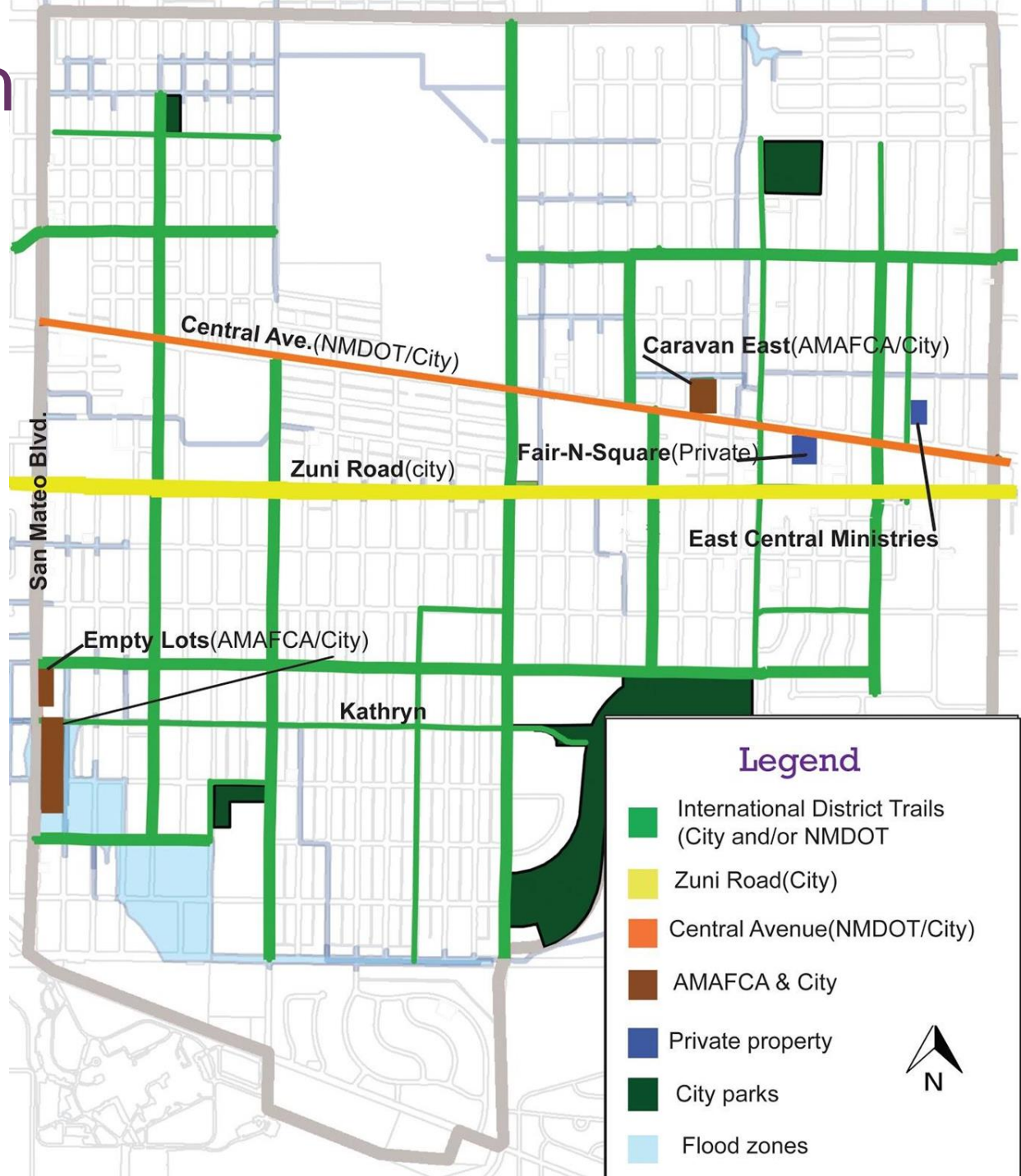
Agencies: Private property owner, AMAFCA & CABQ

Responsibilities: Lot owner responsible for construction and maintenance

Funding: AMAFCA & CABQ provide incentives

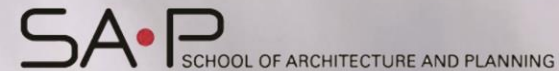


Jurisdiction Map



Networking for IDentity

Utilizing Stormwater Infrastructure to create
a multi-dimensional public realm in the
International District



CRP 521 - ADVANCED PLANNING STUDIO FALL 2014

MCRP STUDENTS:

Joe Affinati	Danielle Gallegos	Whitney Kraner
Zakia Afrin	Derrick Garcia	Roman Lopez
Deborah Anyaibe	Alina Gurung	Kelly Moe
Saray Argumedo	Amanda Hooker	Raquel Rivera
Tiffany Calabaza	Estacia Huddleson	Nathan Todd
Lucinda Gaines	Jessica Johnson	Bryce Townsend
		Daniel Vandever

FACULTY:

Dr. Ted Jojola	Prof. Moises Gonzales	Dr. Laura Harjo
----------------	-----------------------	-----------------



Thank You!